

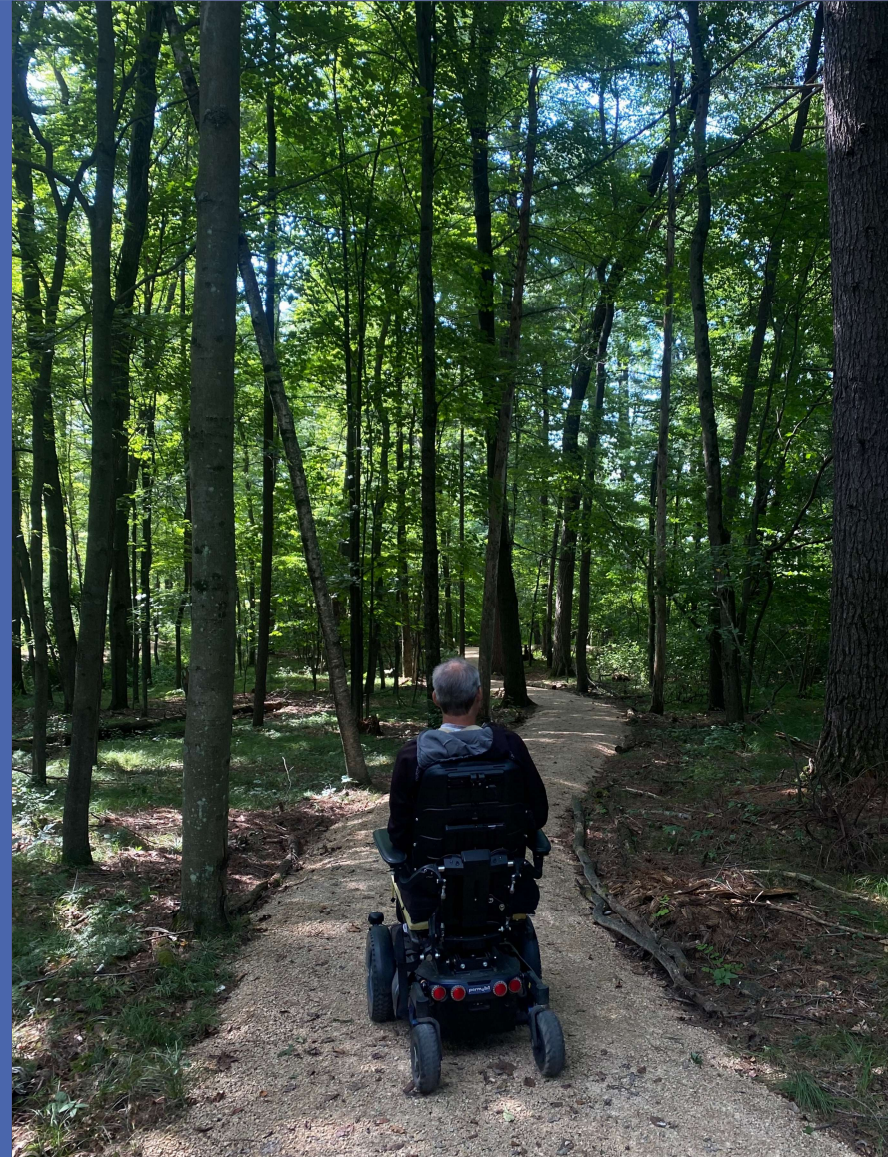
MADISON WATERFRONT PARKS ACCESSIBILITY ANALYSIS AND BEYOND COMPLIANCE OPPORTUNITIES

Morgan Jensema

M.S. Urban and Regional Planning

Professional Project Presentation

April 2026



PROJECT OVERVIEW



Primary Goals

- Evaluate current conditions and opportunities of target waterfront parks: beaches, boat landings, kayak landings, and access piers and identify opportunities for improvement
- Collect lived experiences and integrate that into recommendations
- Produce a Beach Accessibility Checklist as a tool for compliance
- View accessibility from a planning perspective and offer strategies for planning processes and implementation across design and programming in all outdoor public spaces

About the ABA	—
About the ABA Accessibility Standards	
Background	
Ch 1: Application and Administration	+
Ch 2: Scoping Requirements	+
Ch 3: Building Blocks	+
Ch 4: Accessible Routes	+
Ch 5: General Site and Building Elements	+
Ch 6: Plumbing Elements and Facilities	+
Ch 7: Communication Elements and Features	+
Ch 8: Special Rooms, Spaces, and Elements	+
Ch 9: Built-In Elements	+
Ch 10: Recreational Facilities	+

Ch 10: Recreational Facilities	—
1001 General	
1002 Amusement Rides	
1003 Recreational Boating Facilities	
1004 Exercise Machines and Equipment	
1005 Fishing Piers and Platforms	
1006 Golf Facilities	
1007 Miniature Golf Facilities	
1008 Play Areas	
1009 Swimming Pools, Wading Pools, and Spas	
1010 Shooting Facilities with Firing Positions	
1011 Outdoor Constructed Features	
1012 Parking Spaces Within Camping Units and Picnic Units and Pull-Up Spaces at Dump Stations	
1013 Tent Pads and Tent Platforms	
1014 Camp Shelters	
1015 Viewing Areas	
1016 Outdoor Recreation Access Routes	
1017 Trails	
1018 Beach Access Routes	
1019 Conditions for Exceptions	



Full Checklist



- [PDF Non-Fillable Form \(4.63MB\)](#)
- [Word Fillable Metric Form \(6.58MB\)](#)
- [Word Fillable Form \(7.09MB\)](#)
- [Plain Text \(86.2KB\) \(To download, right-click this link and select Save Link As...\)](#)
- [Word Non-Fillable Form \(6.63MB\)](#)
- [Spanish Full Checklist \(PDF\) \(4.14MB\)](#)

Checklist Sections



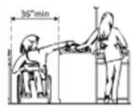
Introduction

- [Word \(437.5KB\)](#)
- [PDF \(990.83KB\)](#)
- [Plain Text \(11.77KB\) \(To download, right-click this link and select Save Link As...\)](#)
- [Spanish Introduction \(PDF\) \(391.78KB\)](#)



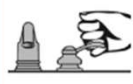
Priority 1: Approach & Entrance

- [Word Fillable Form \(1.47MB\)](#)
- [Word Non-Fillable Form \(1.28MB\)](#)
- [PDF Non-Fillable Form \(1.29MB\)](#)
- [Plain Text \(16.03KB\) \(To download, right-click this link and select Save Link As...\)](#)
- [Spanish Priority 1 \(PDF\) \(1.15MB\)](#)



Priority 2: Access to Goods & Services

- [Word Fillable Form \(2.41MB\)](#)
- [Word Non-Fillable Form \(2.32MB\)](#)
- [PDF Non-Fillable Form \(2.24MB\)](#)
- [Plain Text \(27.96KB\) \(To download, right-click this link and select Save Link As...\)](#)
- [Spanish Priority 2 \(PDF\) \(1.88MB\)](#)



Priority 3: Toilet Rooms

- [Word Fillable Form \(2.26MB\)](#)
- [Word Non-Fillable Form \(2.13MB\)](#)
- [PDF Non-Fillable Form \(7.14.04KB\)](#)
- [Plain Text \(20.31KB\) \(To download, right-click this link and select Save Link As...\)](#)
- [Spanish Priority 3 \(PDF\) \(1.009.22KB\)](#)



Priority 4: Additional Access

- Drinking Fountains, Public Telephones & Fire Alarms
- [Word Fillable Form \(644KB\)](#)
 - [Word Non-Fillable Form \(591.5KB\)](#)
 - [PDF Non-Fillable Form \(786.4KB\)](#)
 - [Plain Text \(7.25KB\) \(To download, right-click this link and select Save Link As...\)](#)
 - [Spanish Priority 4 \(PDF\) \(419.71KB\)](#)

Recreational Checklists



Amusement Rides

- [Word Fillable Form \(764.5KB\)](#)
- [Word Non-Fillable Form \(660KB\)](#)
- [PDF Non-Fillable Form \(983.32KB\)](#)
- [Plain Text \(14.79KB\) \(To download, right-click this link and select Save Link As...\)](#)



Fishing Facilities

- [Word Fillable Form \(790.5KB\)](#)
- [Word Non-Fillable Form \(785KB\)](#)
- [PDF Non-Fillable Form \(828.06KB\)](#)
- [Plain Text \(5.33KB\) \(To download, right-click this link and select Save Link As...\)](#)



Golf Facilities

- [Word Fillable Form \(702KB\)](#)
- [Word Non-Fillable Form \(655KB\)](#)
- [PDF Non-Fillable Form \(803.77KB\)](#)
- [Plain Text \(4.67KB\) \(To download, right-click this link and select Save Link As...\)](#)



Miniature Golf Facilities

- [Word Fillable Form \(1000.5KB\)](#)
- [Word Non-Fillable Form \(975KB\)](#)
- [PDF Non-Fillable Form \(849.6KB\)](#)
- [Plain Text \(4.31KB\) \(To download, right-click this link and select Save Link As...\)](#)



Play Areas

- [Word Fillable Form \(380KB\)](#)
- [Word Non-Fillable Form \(272.5KB\)](#)
- [PDF Non-Fillable Form \(724.85KB\)](#)



Recreational Boating Facilities

- [Word Fillable Form \(1.49MB\)](#)
- [Word Non-Fillable Form \(1.43MB\)](#)
- [PDF Non-Fillable Form \(919.34KB\)](#)
- [Plain Text \(11.71KB\) \(To download, right-click this link and select Save Link As...\)](#)



Swimming Pools, Wading Pools & Spas

- [Word Fillable Form \(2.66MB\)](#)
- [Word Non-Fillable Form \(2.5MB\)](#)
- [PDF Non-Fillable Form \(1.38MB\)](#)
- [Plain Text \(16.49KB\) \(To download, right-click this link and select Save Link As...\)](#)



Miscellaneous

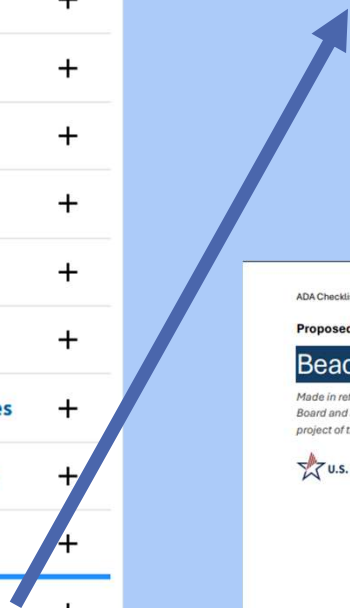
- Areas of Sports Activities, Team or Player Seating, Exercise Machines & Equipment, Bowling Lanes, Saunas & Steam Rooms, and Shooting Facilities
- [Word Fillable Form \(680KB\)](#)
 - [Word Non-Fillable Form \(634.5KB\)](#)
 - [PDF Non-Fillable Form \(828.31KB\)](#)
 - [Plain Text \(8.03KB\) \(To download, right-click this link and select Save Link As...\)](#)

PROPOSED BEACH ACCESSIBILITY CHECKLIST



- About the ABA -
- About the ABA Accessibility Standards
- Background
- Ch 1: Application and Administration +
- Ch 2: Scoping Requirements +
- Ch 3: Building Blocks +
- Ch 4: Accessible Routes +
- Ch 5: General Site and Building Elements +
- Ch 6: Plumbing Elements and Facilities +
- Ch 7: Communication Elements and Features +
- Ch 8: Special Rooms, Spaces, and Elements +
- Ch 9: Built-In Elements +
- Ch 10: Recreational Facilities +

1018 Beach Access Routes



ADA Checklist for Existing Facilities Beach Access Checklist

Proposed ADA Checklist

Beach Access Checklist

Made in reference to the 2013 Architectural Barriers Act (ABA) Guidelines from the United State Access Board and modeled after the ADA Checklist for Existing Facilities from the New England ADA Center a project of the Institute for Human Centered Design.

Produced by City of Madison Department of Civil Rights

ADA Checklist for Existing Facilities Beach Access Checklist

1.0 Getting to the Beach Access Route

F206 (Accessible Routes) and 1017 (Outdoor Accessible Routes)

			Photo:	Possible Solutions:
<ul style="list-style-type: none"> Is there an accessible route connecting parking, sidewalks, or transit stops to the beach access route? 	<input type="checkbox"/> Yes <input type="checkbox"/> No			
<ul style="list-style-type: none"> Is the route firm, stable, and free of obstacles? 	<input type="checkbox"/> Yes <input type="checkbox"/> No			
<ul style="list-style-type: none"> Is the path at least 36 inches wide (minimum for accessible routes leading to the beach)? 	<input type="checkbox"/> Yes <input type="checkbox"/> No			
<ul style="list-style-type: none"> Are slopes and cross slopes manageable for mobility device users? 	<input type="checkbox"/> Yes <input type="checkbox"/> No			

Photo from ADA Checklist

Notes / Barriers Observed:

METHODS AND ANALYSIS



INTERVIEWS

Adam Kaniewski

City of Madison Parks Division Head Planner

Autumn Neugent

Community Disability and Adaptive Recreation Advocate, Active Consultant

Nick Zouski

Wisconsin Department of Natural Resources Accessibility Coordinator

Monica Spaeni

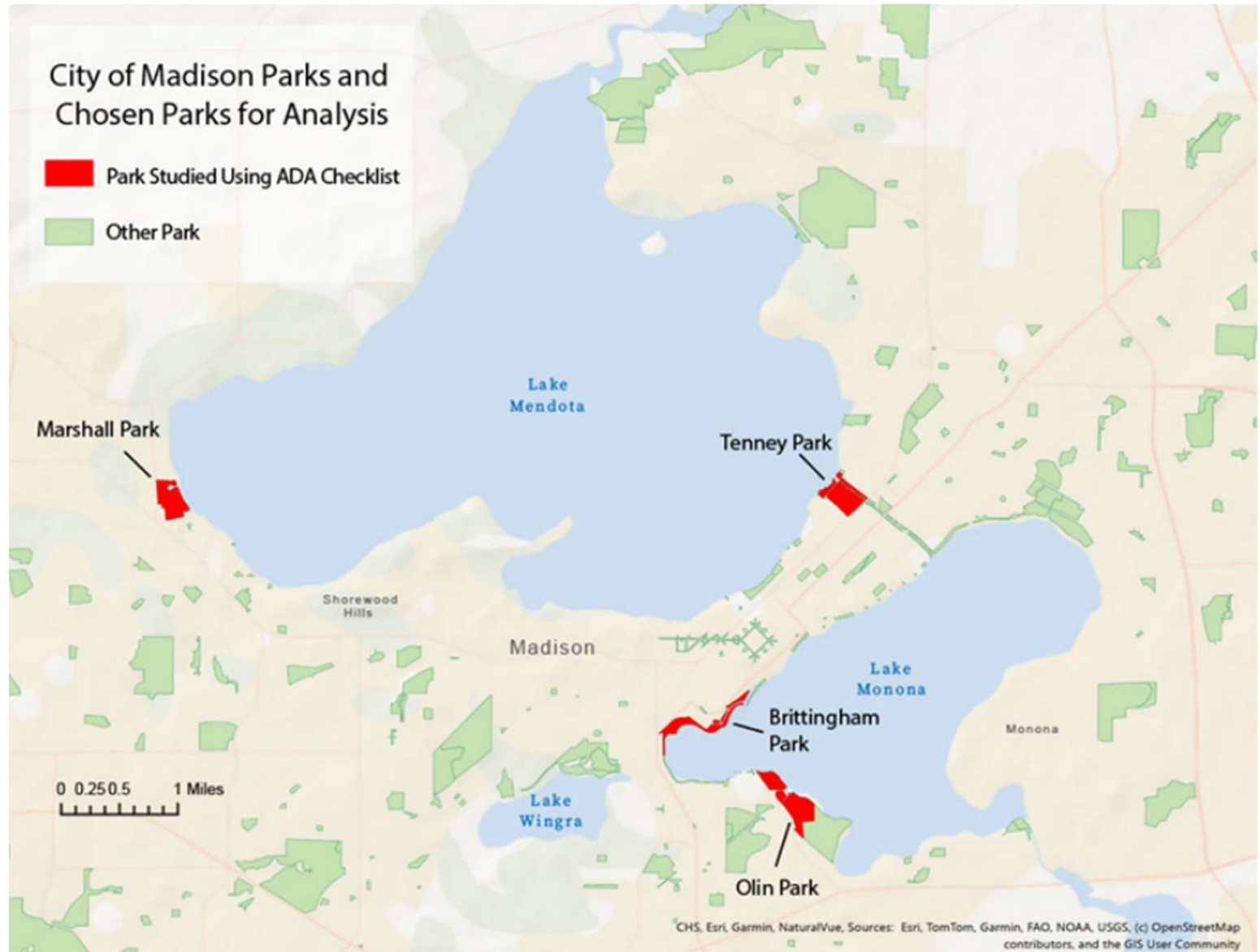
President of Access Ability Wisconsin

Martha Siravo

Co-founder of Madtown Mommas and Disability Advocates, Active Consultant

Site Selection

Locations chosen by City of Madison Parks Division



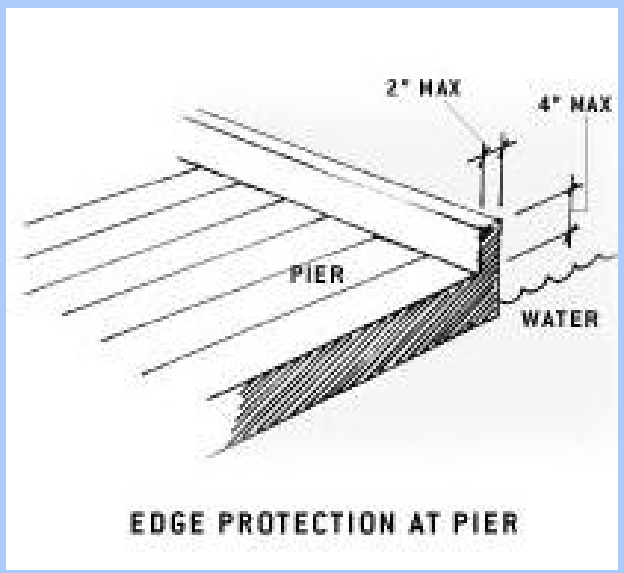
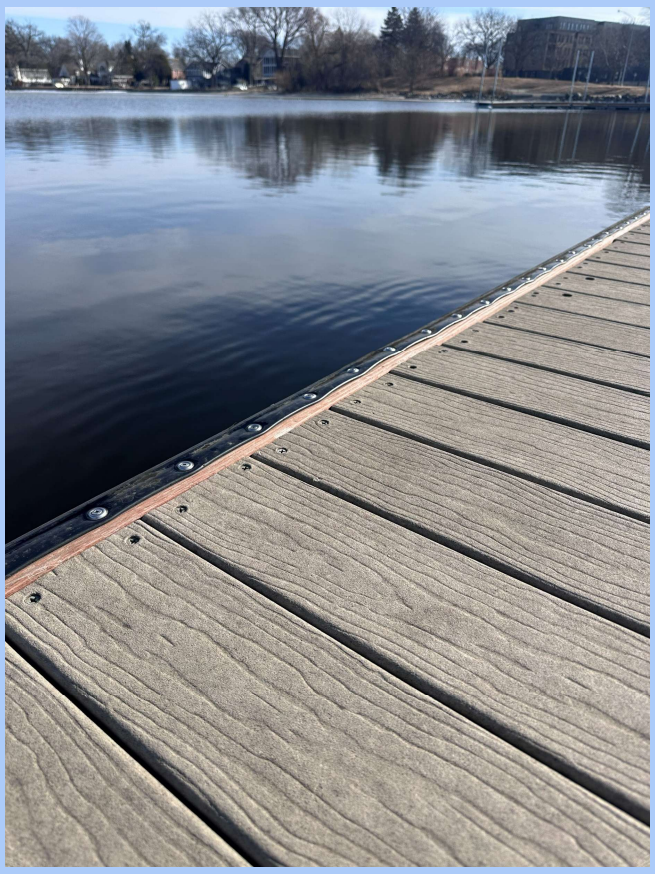
EQUIPMENT



FINDINGS



COMMON DEFICIT



Section B13 Checklist

Marshall Park

COMPLIANT

Beyond Compliance Opportunities:



Tenney Park

DEFICIETS

Section B4 and B5 Checklist



Tenney Park

BEYOND COMPLIANCE OPPORTUNITIES



Tenney Park

ADDITIONAL CONCERNS



Tenney Park

ADDITIONAL CONCERNS



Brittingham Park

COMPLIANT

Beyond Compliance Opportunities:



Olin Park

DEFICIETS Section B4 and B5 Checklist



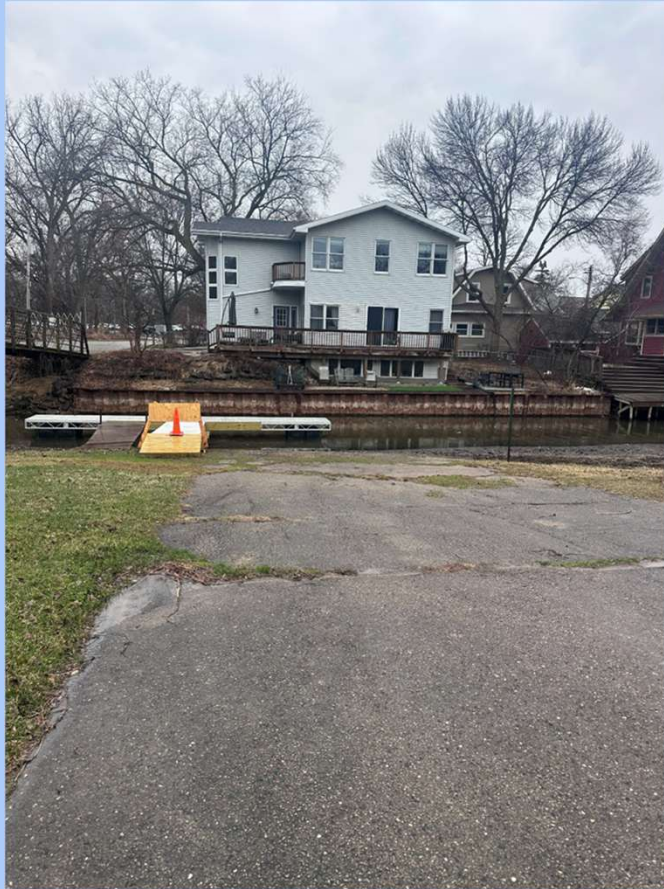
Olin Park

Beyond Compliance Opportunities:



Olin Park

Additional Opportunity



GENERAL RECOMMENDATIONS FOR BEYOND COMPLIANCE DESIGN



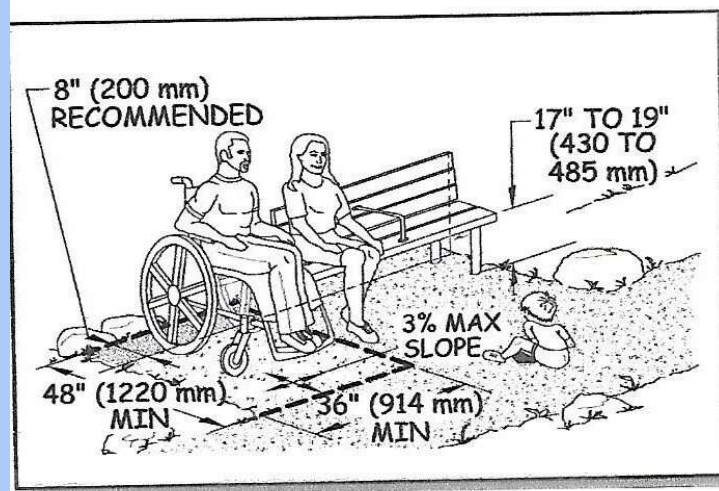
SURFACES

Concrete, asphalt, and other paved surfaces are more reliably compliant, but other materials, such as wood, and construction methods can be used to provide firm and stable surfaces.

ABA Standards



THOUGHTFUL DESIGN



ACCESS TO ADVANCED EQUIPMENT: ALL-TERRAIN AND BEACH WHEELCHAIRS

Reservation Details

The wheelchair is available to reserve **May to September** and will also be available at select volunteer and education program events.

Reservations are available at the following times:

- Tuesday, Thursday: 9:00 - Noon, 1:00 p.m. - 4:00 p.m., and 4:00 - 7:00 p.m.
- Saturday: 9:00 - Noon and 1:00 p.m. - 4:00 p.m.

Due to the battery life of the all-terrain wheelchair, reservations are limited to three hour timeslots. Reservations can be made up to 30 days in advance. Before making a reservation, the user is required to read the Dane County Parks All-Terrain Wheelchair User Guide.

Individuals between the ages of 12-17 can use the chair if they wear a helmet and have a guardian present. A guardian over 18 must make the reservation for the minor and sign a waiver.



BEST PRACTICES FOR INTEGRATION OF ACCESSIBILITY IN PLANNING PROCESS



- Early and Active Communication
- Public Engagement

The plan was produced in reference to education materials, speakers, and Paul Schmitz's Public Engagement Toolkit and serves as a guide for the envisioned public engagement framework.

- Thoughtful Programming

Example: Lake Wingra "Full Moon Paddles"

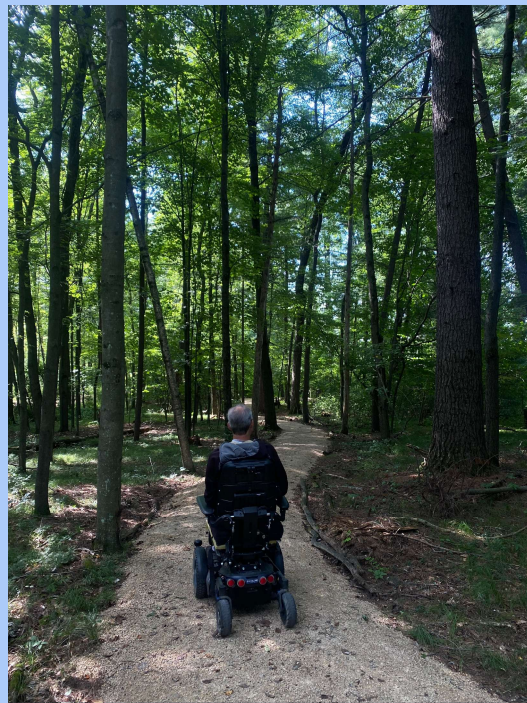


Full Moon Paddle (Courtesy Madison Boats)

IMPLEMENTATION CONSIDERATIONS OF ACCESSIBLE PROGRAMMING AND DESIGN

FUNDING IMPLEMENTATION STRATEGIES

Looping in Improvements: Gibson Island
Grants and Resources



MAINTENANCE CONSIDERATIONS

Beach mats, weather, etc

ACCESS AND ADVERTISING OF RESOURCES

Web Platforms, Signage, and Adaptive Equipment