

Complete Green Streets Project Checklist

Project Name and Limits

- Rutledge St – Riverside Dr to Division St (Reconstruction)
- Division St – Rutledge St to Oakridge Ave (Resurfacing)
- Yahara Pl – Intersection on Russell St and bend on 2034 Yahara Pl (Pavement Replacements for Sanitary Structure replacement)

Project Map



Project Improvement Type

Reconstruction & Resurfacing

Alder District

District 6

Project Schedule

2024 Construction

Project Website

<https://www.cityofmadison.com/engineering/projects/rutledge-street-reconstruction>

Project Team

Andy Zwiag, P.E., Engineering

Nashaly Gutierrez Vazquez, Engineering

Kyle Frank, Engineering - Sewer

Nathan Mendez, Engineering - Water

Jeremy Nash, Traffic Engineering

Section One: Data Gathering**1. What is the Street Type for this project?**

Neighborhood Street

2. What is the Right of Way Width?

Rutledge St – 66'

Division St – 66'

3. What are the Overlays for this project?

- Equity Priority Area
- Transit Priority Network
- All Ages Ability Bike Network
- Tree Canopy Priority Area
- DGI Priority Area
- NHS & Truck Routes
- None

4. What type of facilities that would influence the street design are located within the project boundaries or within ¼ mile of the street project?

School: Yes, Marquette Elementary & O’Keeffe Middle

Park: Yes, within 1/4 mile of project

Library or Community Center: No

Senior Living Apartments/Facility: No

Hospital: No

Business District or similar shopping area: Shopping along Division

Event Venue: No

Fire Station: No

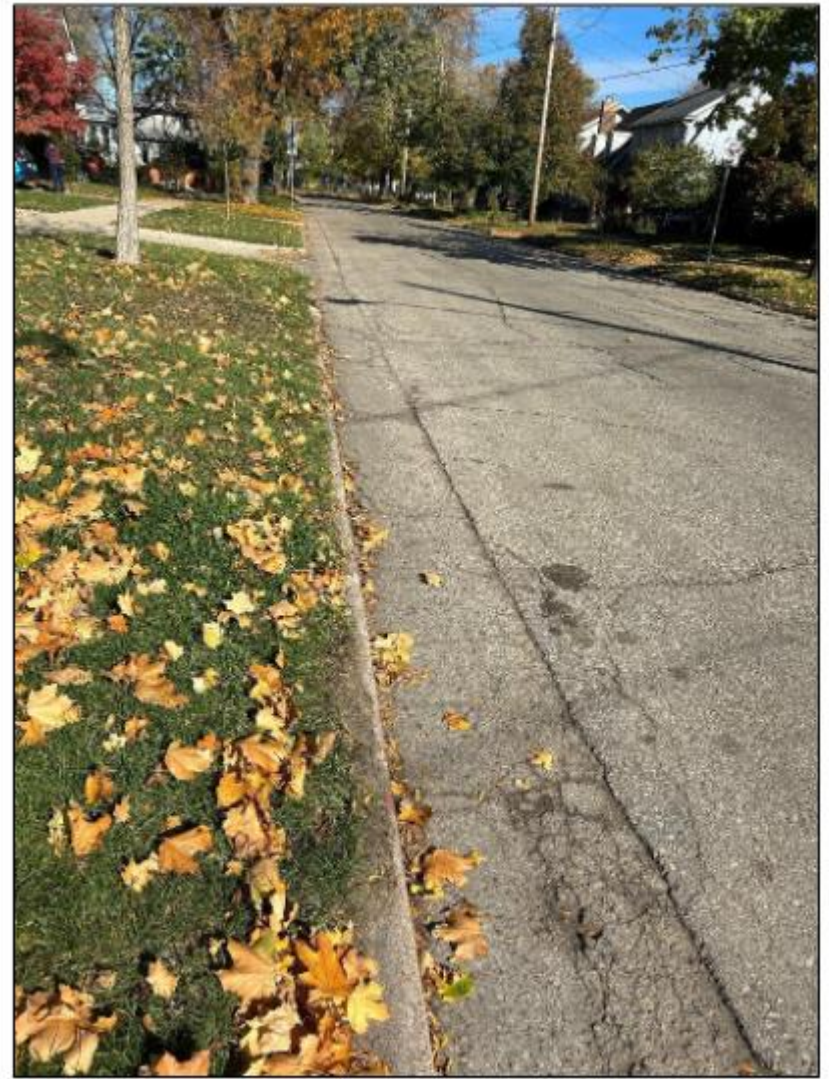
Other:

5. Review of Current Conditions

Rutledge has over 50% of pavement that is cracked or deteriorated and is rated 5/10. The curb rating is 2/10. This is an urban street with sidewalk on both sides and curb and gutter. Division has curb and gutter and sidewalk on both sides.



Rutledge at Division/Lakeland



Rutledge looking east toward Division

Current Street Infrastructure	Additional Information
<p>Crash Data High Injury Network</p>	<p>2017-Current Injury Crashes:</p> <ul style="list-style-type: none"> ○ Rutledge – No injury crashes ○ Division – 4 Minor Injury, 1 Suspected Injury at Capital City Path intersection <p>High Injury Network</p> <ul style="list-style-type: none"> ● Not on the High Injury Network
<p>Current posted speed limit Other Speed Data</p>	<p>Current Posted Speed Limit:</p> <ul style="list-style-type: none"> ● 25 mph <p>2022 Speed Study</p> <ul style="list-style-type: none"> ● 71% at 25mph or less ● 15% 25-27 mph ● 11% 27-30mph ● 3% 30+mph
<p>Traffic Volumes</p>	<p>2022 Data</p> <ul style="list-style-type: none"> ● 1,217 motor vehicles per day
<p>Sidewalks & Paths</p>	<ul style="list-style-type: none"> ● Sidewalks on both sides ● Capital City Path crosses Division St <ul style="list-style-type: none"> ○ Crossing has SS4A funding for raised crossing
<p>Bicycle infrastructure</p>	<p>Rutledge St & Division St</p> <ul style="list-style-type: none"> ● LOS 2
<p>Signalized intersection(s)</p>	<ul style="list-style-type: none"> ● Division at Eastwood
<p>Pavement rating</p>	<p>Rutledge St</p> <ul style="list-style-type: none"> ● 5/10 <p>Division St</p> <ul style="list-style-type: none"> ● 5-6/10
<p>Curb and gutter rating</p>	<p>Rutledge St</p> <ul style="list-style-type: none"> ● 2/10 <p>Division St</p> <ul style="list-style-type: none"> ● 9/10

Stormwater Study Information	https://www.cityofmadison.com/engineering/projects/east-isthmus-and-yahara-river-watershed-study
Tree canopy	Tree Equity Score – 95 Tree Canopy – 32%
Transit Service	Not currently but keeps option for future
School Zone	No
Snow emergency zone	Yes
Clean Streets Clean Lakes area	Yes, No Parking 8AM-11:30AM Thursdays
Parking Information	Rutledge St <ul style="list-style-type: none"> • Parking on one side Division St <ul style="list-style-type: none"> • Parking on one side (Helena to Jenifer) No parking data collected
Placemaking (items in the ROW such as street art, bike racks, benches, neighborhood signs, street cafes, BCycle) Project includes 1% for the Arts	<ul style="list-style-type: none"> • Not a 1% for the Arts requirement on this project
Underground utilities presence & condition	Replacing outdated utilities – sanitary and water
DGI Information	Reached 64 Rain gardens offered where terrace allows

6. Are there recent area or neighborhood plans or other outreach efforts that can inform the project? List relevant information.

Last neighborhood plan was 1994 - <https://www.cityofmadison.com/dpced/planning/documents/marquette.pdf>

Section Two: Engagement Planning

1. List planned/completed engagement activities, meetings, mailings and where appropriate list days/times.
 - For projects not identified as in an Equity Priority Area, follow your department's standard engagement process.
 - For Equity Priority Area, use the City's [RESJII Public Participation Guide](#) to assist the project team in developing an engagement plan appropriate for the project.

- Mailing to residents
- Online survey (paper survey upon request)
- Virtual public meeting December 18 (recorded & linked on website)
- Website - <https://www.cityofmadison.com/engineering/projects/rutledge-street-reconstruction>

2. What other City projects or private development are happening within the project boundaries or in the neighborhood? For Equity Priority Areas, what are the opportunities to work together with other departments on engagement?

Future Area Plan (Not Yet Scheduled)

3. For Equity Priority Areas, which of the previous plans or engagement efforts help with informing the priorities or concerns for this project?

NA

Section Three: Engagement Outcomes

- 1. Were concerns raised during the engagement about the original Street Type designation? If yes, what were the concerns and what is the new recommended Street Type?**

No concerns regarding Neighborhood Street designation.

- 2. What are the top priorities or concerns expressed by residents during project engagement? (from project survey for non-EPA areas)**

Top High Concern Issues from Survey

- Concerns with speeding on Rutledge Street
- Preference for keeping the street design as existing

Concerns from Public Meeting

- Concerns over the 26' street design; preference to keep width as is

- 3. What project elements address the top concerns raised during engagement? What concerns are not able to be addressed with this project and why?**

Offered different parking options to allow it to provide some traffic calming benefit

Recommended option keeps street wider but allows parking on both sides of the street

4. What other project elements address concerns determined by reviewing data?

This is a busy pedestrian area so propose to add curb bumpouts to shorten crossing distance and increase pedestrian visibility

Section Four: Design

1. Preliminary Design

Staff Recommended Design

Option 1C: Rutledge (Riverside Dr to Division St)

- 28' curb to curb width
- On street parking on both sides (can be changed if a Metro route used Rutledge St)
- Traffic Calming

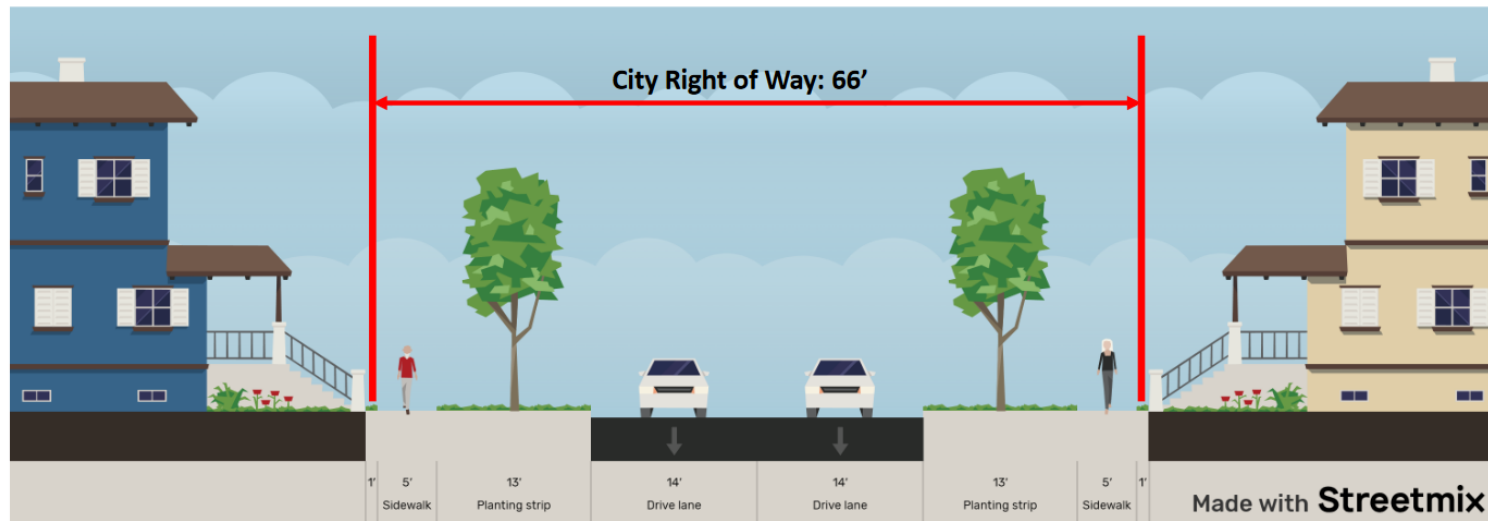
Other Presented Options

Option 1A: Rutledge (Riverside Dr to Division St)

- 28' curb to curb width
- On street parking remains all on one side
- Traffic calming

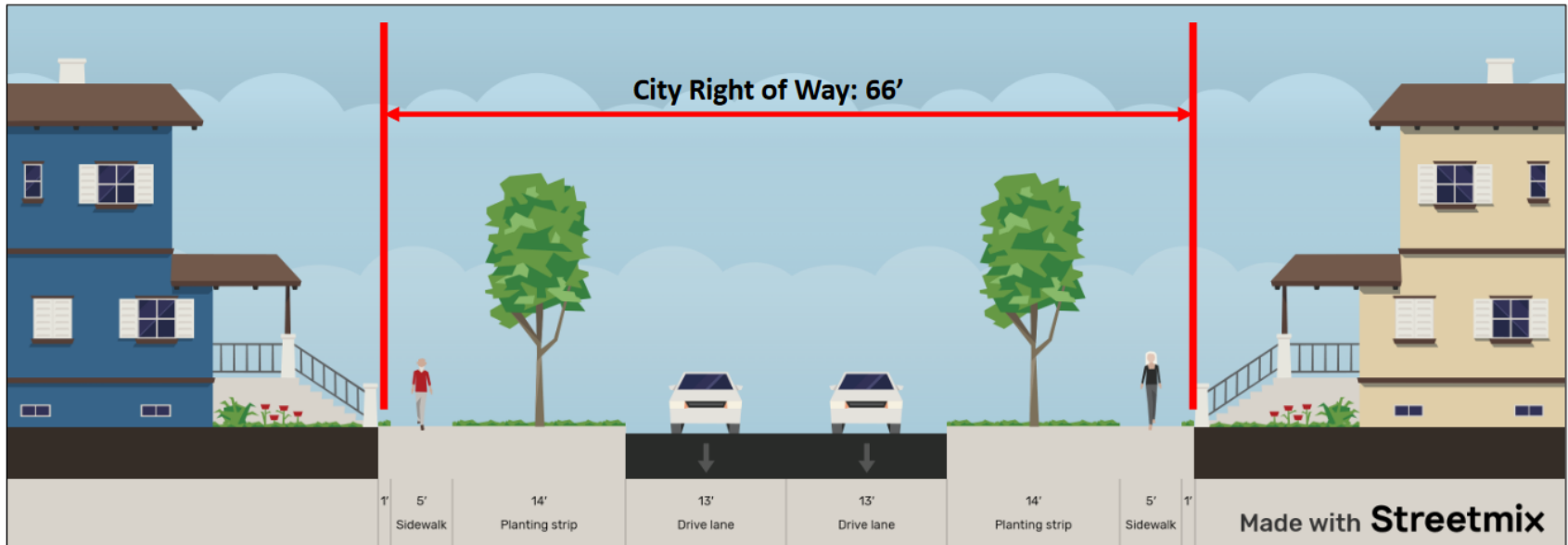
Option 1B: Rutledge (Riverside Dr to Division St)

- 28' curb to curb width
- On street parking alternating per block
- Traffic calming



Option 2A: Rutledge (Riverside Dr to Division St)

- 26' curb to curb width
- On street parking one side
- Increase terrace side by 1'



2. Final Approved Design

Approved Cross Section – Add after approval

Section Five: Determining Impact & Reviewing Accountability

1. After project approval, how will the final street design be communicated back to the neighborhood and people who provided input? For Equity Priority Areas, did the City hear any feedback on the final design, project processes or communication that should be reviewed to improve the process?

- Alder notified
- Website update & email to those who have registered for notifications
- Assessment letter
- Pre-construction public meeting

2. For Equity Priority Area, were there issues or concerns that were not addressed by this project? What department or staff was notified of these issues? Are there current opportunities to address these concerns?

NA

3. What are the final project design elements that were included to support the goals of Complete Green Streets?

Category	Specific Change
Speed Management	<i>Add after final design</i>
Pedestrian Improvements	<i>Add after final design</i>
Bike Improvements	<i>Add after final design</i>
Transit Improvements	<i>Add after final design</i>
Lighting Improvements	<i>Add after final design</i>
Accessibility Improvements	<i>Add after final design</i>

Tree Canopy	<i>Add after final design</i>
DGI Elements	<i>Add after final design</i>
Public Space/Furnishings and Placemaking	<i>Add after final design</i>
Other (please specify)	<i>Add after final design</i>

4. Other Project Review Comments

Add after construction complete