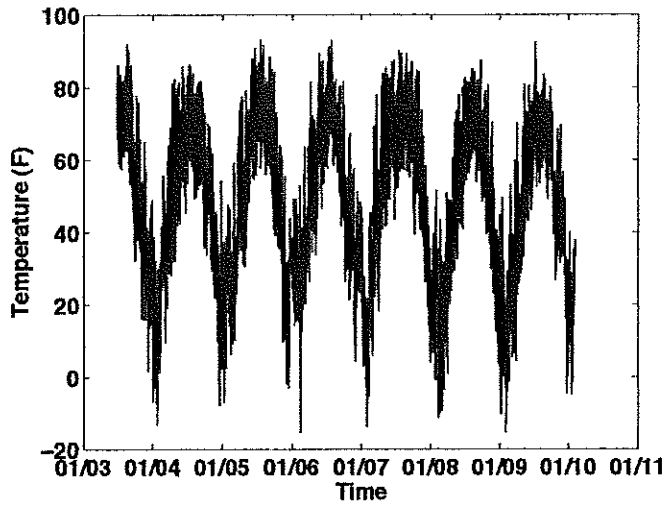
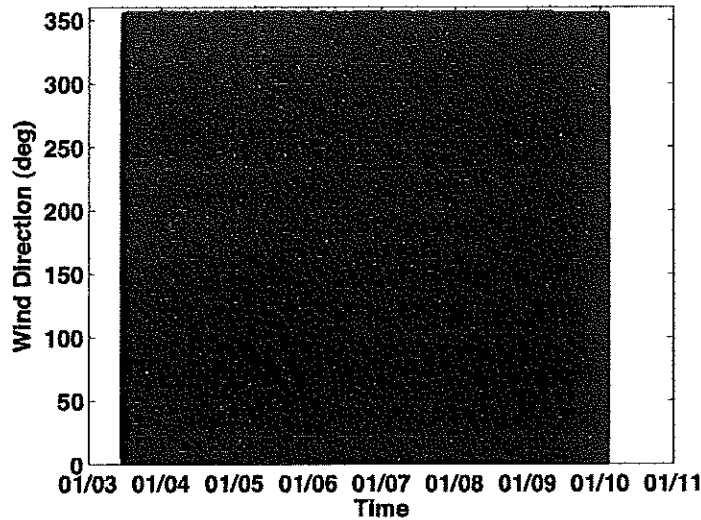


## Description of Figures

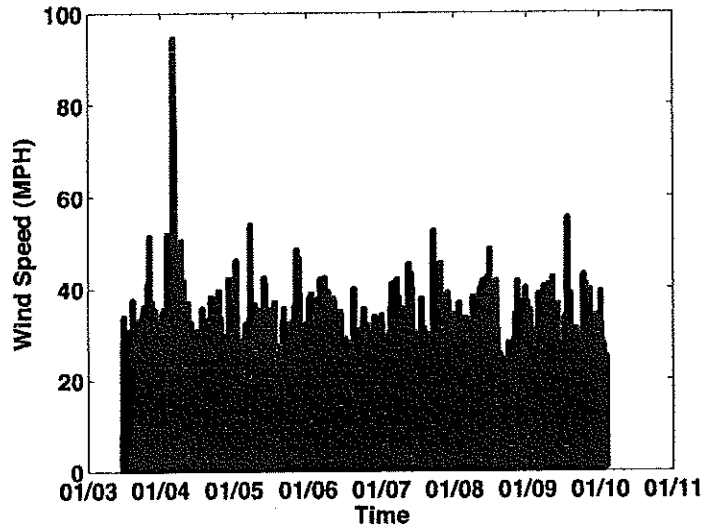


**FIGURE 1:** This plot shows the entire temperature record (Fahrenheit) from the AOS rooftop measurement station. The horizontal axis is time, from January 2003 to January 2011.

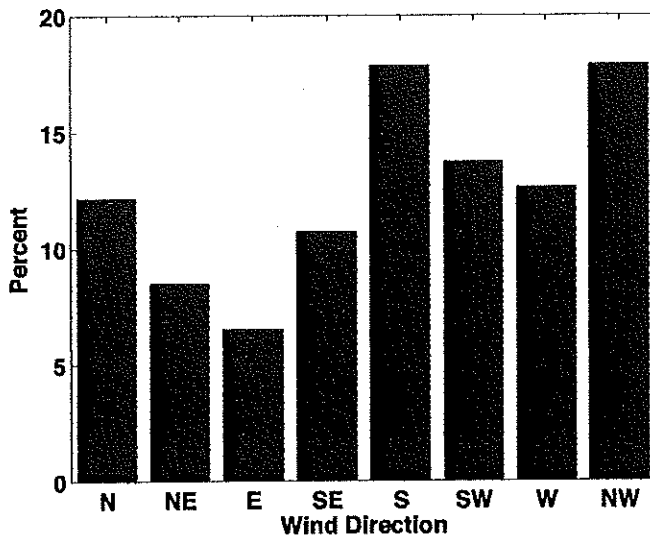


**FIGURE 2:** This plot shows the entire wind-direction record (degrees) from the AOS rooftop measurement site. Since it is very evenly distributed, with no seasonal patterns, there is little value in looking at the "average" of this dataset.

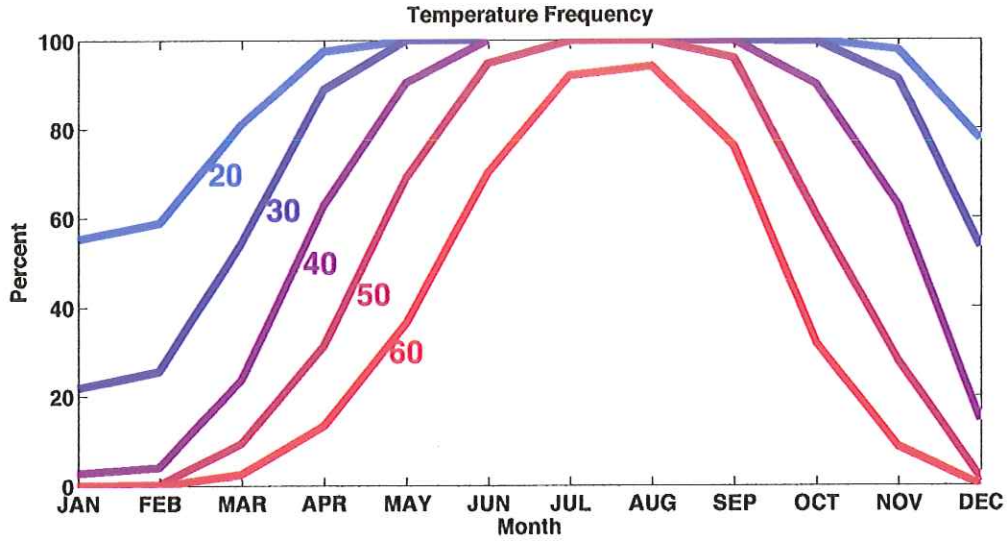
UDZ 2-3-10 F453206 #6



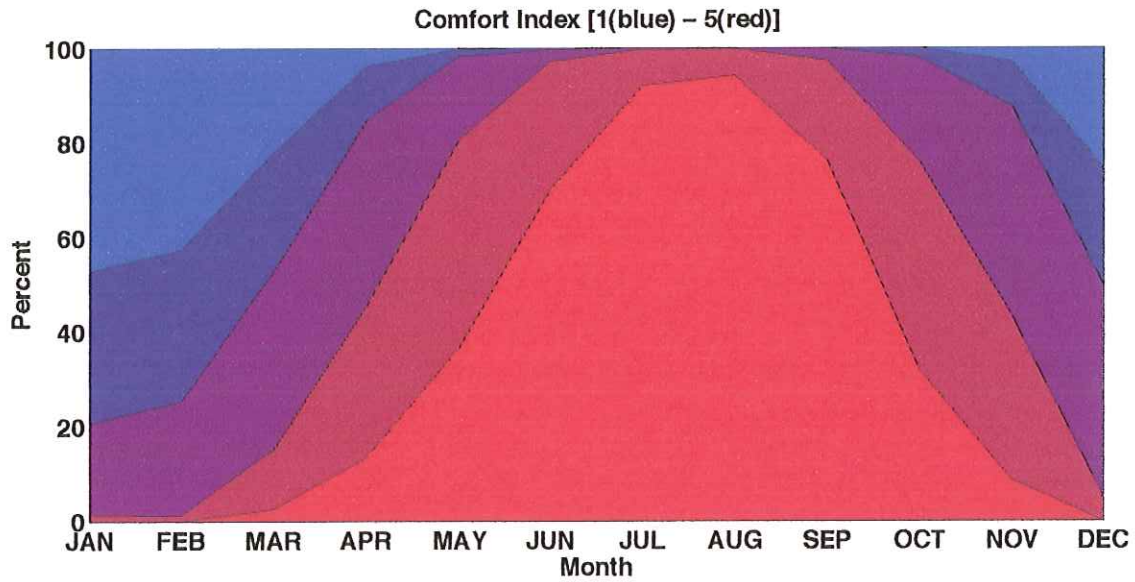
**FIGURE 3:** This plot shows the entire wind-speed record (in MPH) from the AOS rooftop measurement site.



**FIGURE 4:** This plot shows the percentage of total cases for each wind direction for the entire data set plotted in Figure 2.



**FIGURE 5:** This plot shows the percentage of total cases for which the temperature was greater than the amounts shown, for each month. For example, in January, temperatures were above 30 degrees ~20% of the time, and above 20 degrees ~55% of the time.



**FIGURE 6:** This plot shows the percentage of total cases for which the "comfort index" is at least at the level indicated (1-5), for each month. A description of the comfort index qualifiers is below. For example, in January, the comfort index was at least "2" ~53% of the time and at least "3" ~20% of the time.

**Comfort Index**

**1**

Temperature under 20 degrees

**OR**

Temperature under 30 degrees with winds greater than 15 MPH from a direction between  
NW and NE

**OR**

Temperature under 45 degrees with winds greater than 30 MPH from a direction between  
NW and NE

---

**2**

Temperature under 30 degrees

**OR**

Temperature under 45 degrees with winds greater than 15 MPH from a direction between  
NW and NE

---

**3**

Temperature under 45 degrees

**OR**

Temperature under 60 degrees with winds greater than 15 MPH from a direction between  
NW and NE

---

**4**

Temperature under 60 degrees

**OR**

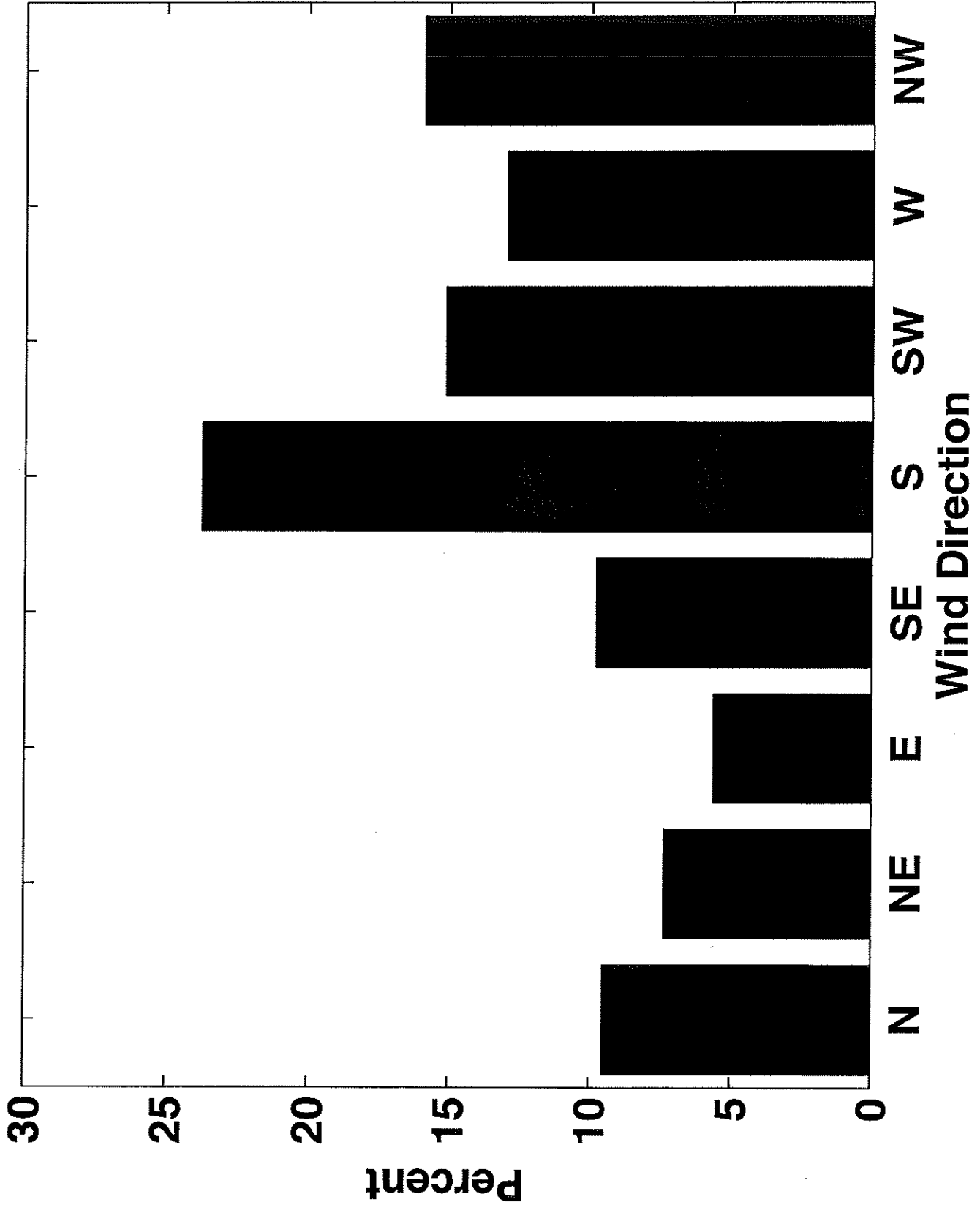
Temperature above 60 degrees with winds greater than 30 MPH from a direction between  
NW and NE

---

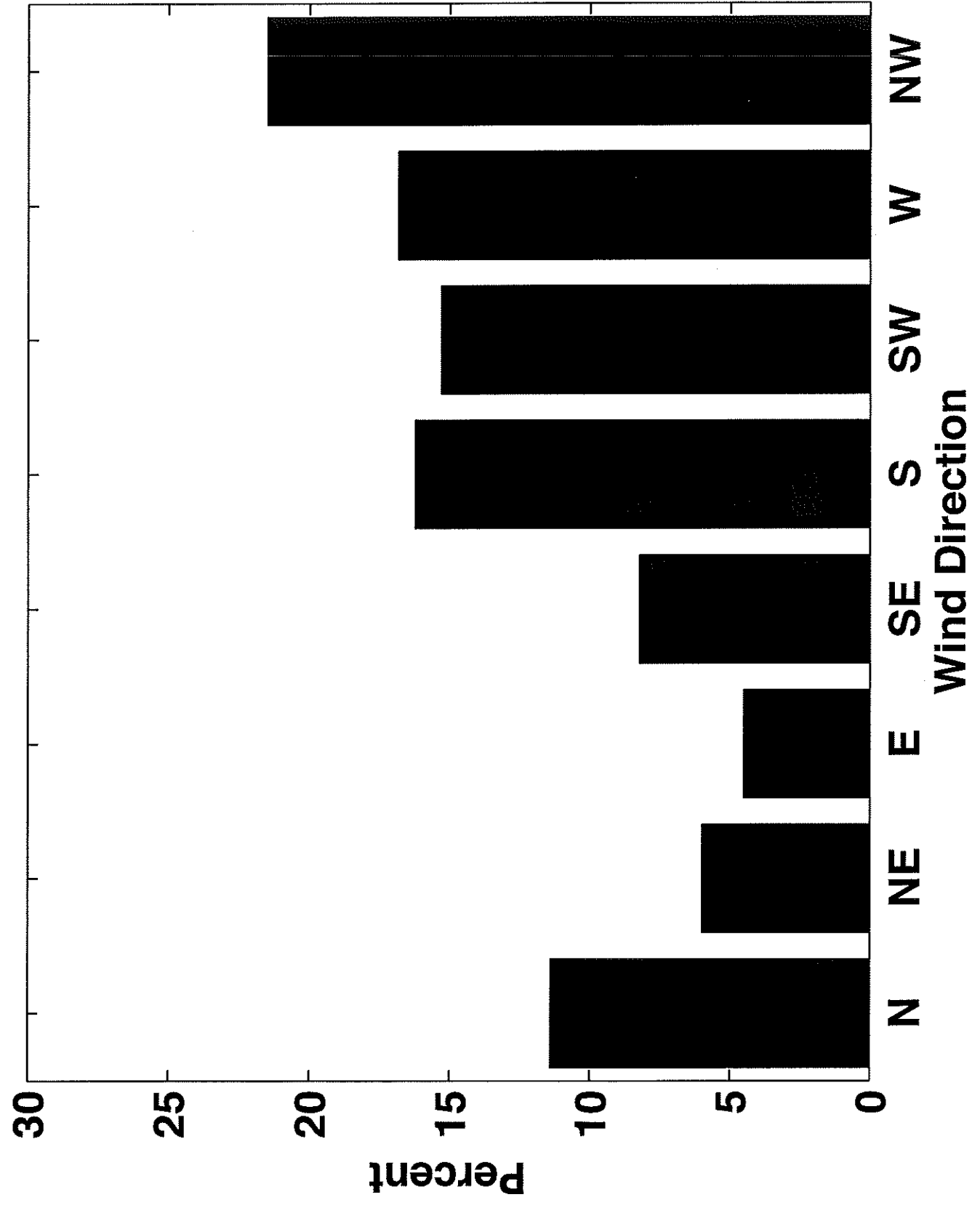
**5**

Temperature above 60 degrees and winds NOT between NW and NE at 30+ MPH

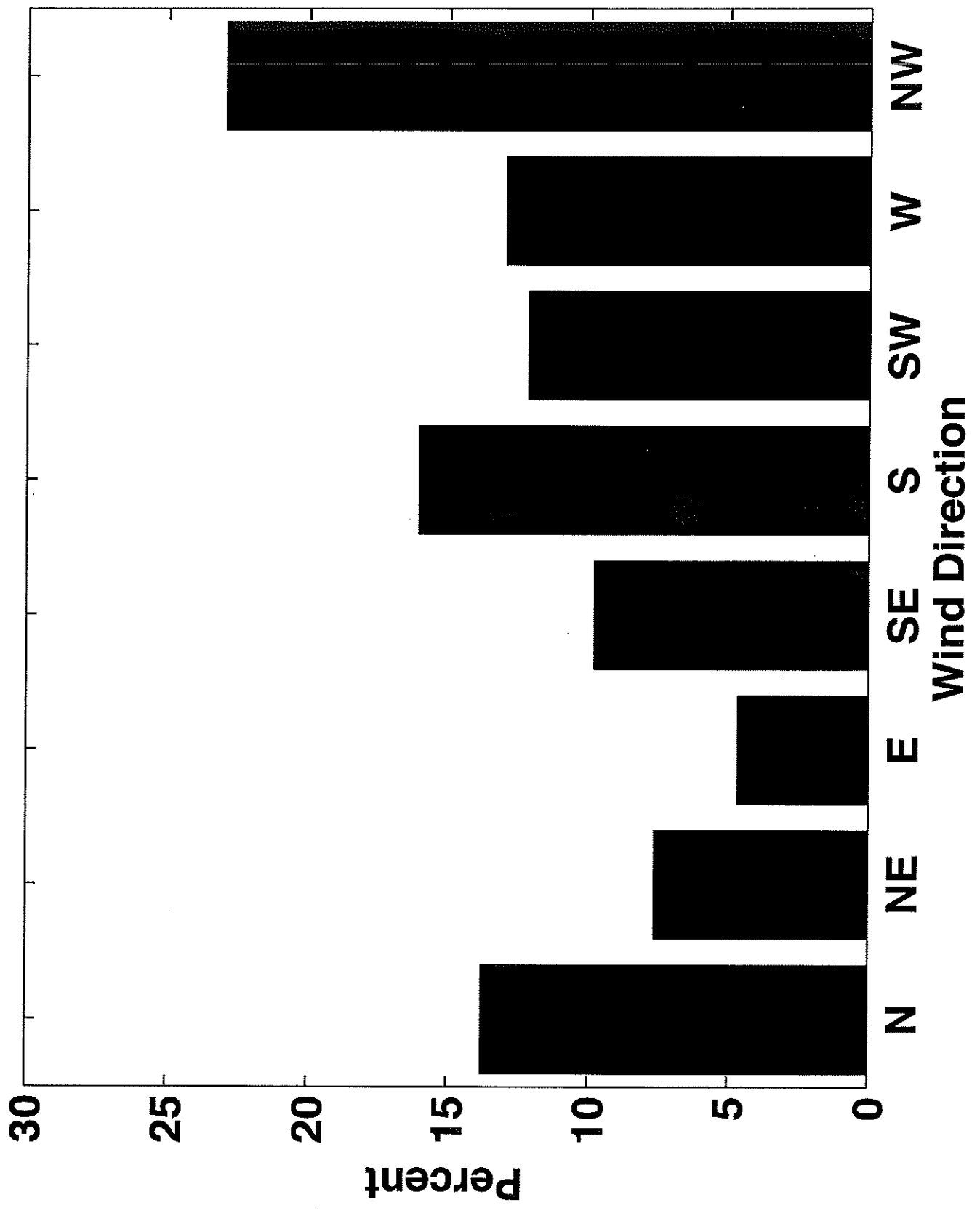
# Wind Direction for Month:11



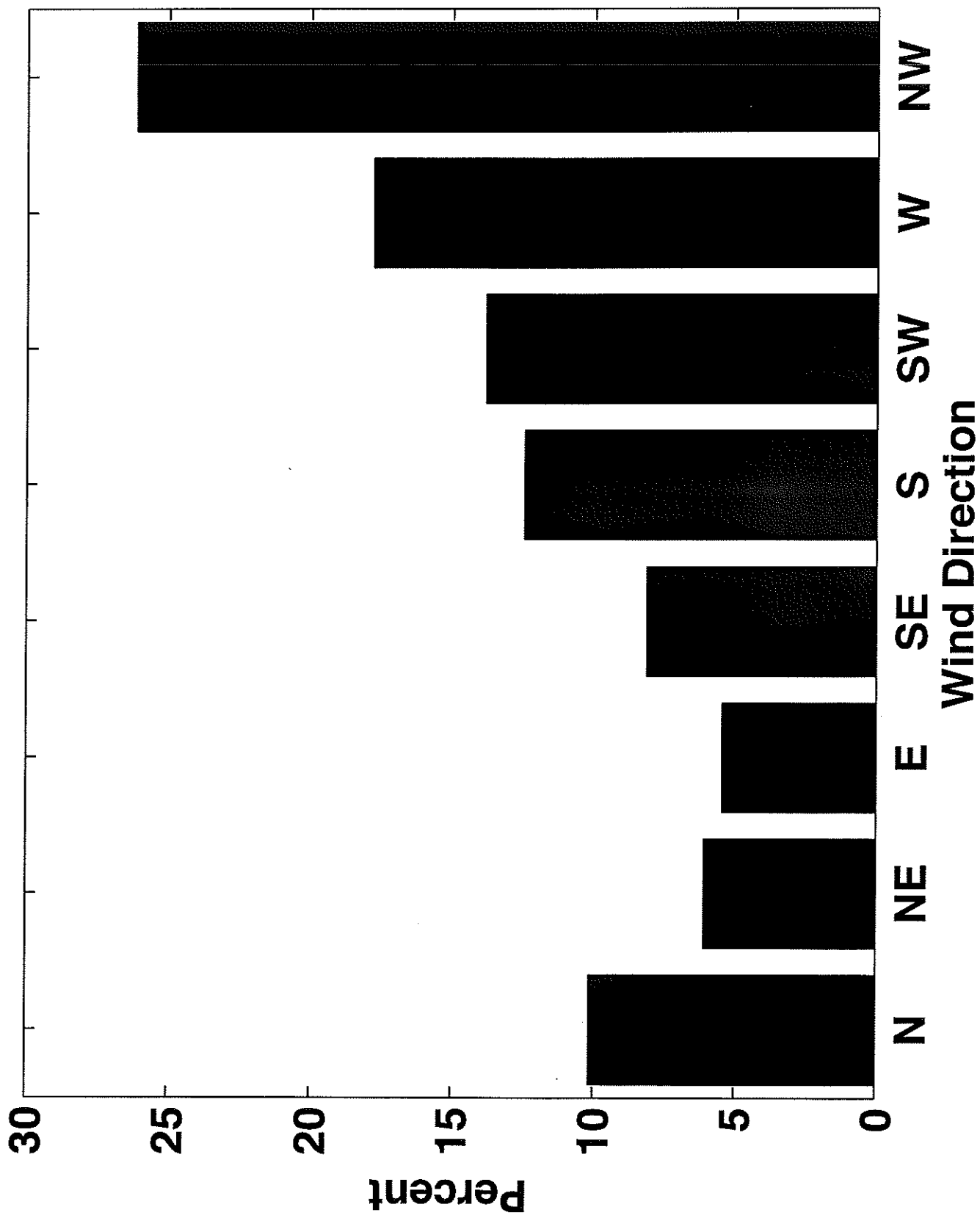
# Wind Direction for Month:12



# Wind Direction for Month:1



# Wind Direction for Month:2





**ADA ACCESS DIAGRAM**  
Presented to UDC February 3, 2010

ELKUS | MANFREDI  
ARCHITECTS

[Address] 300 A STREET  
BOSTON MASSACHUSETTS 02210  
[Phone] 617-426-1300

**The Edgewater**

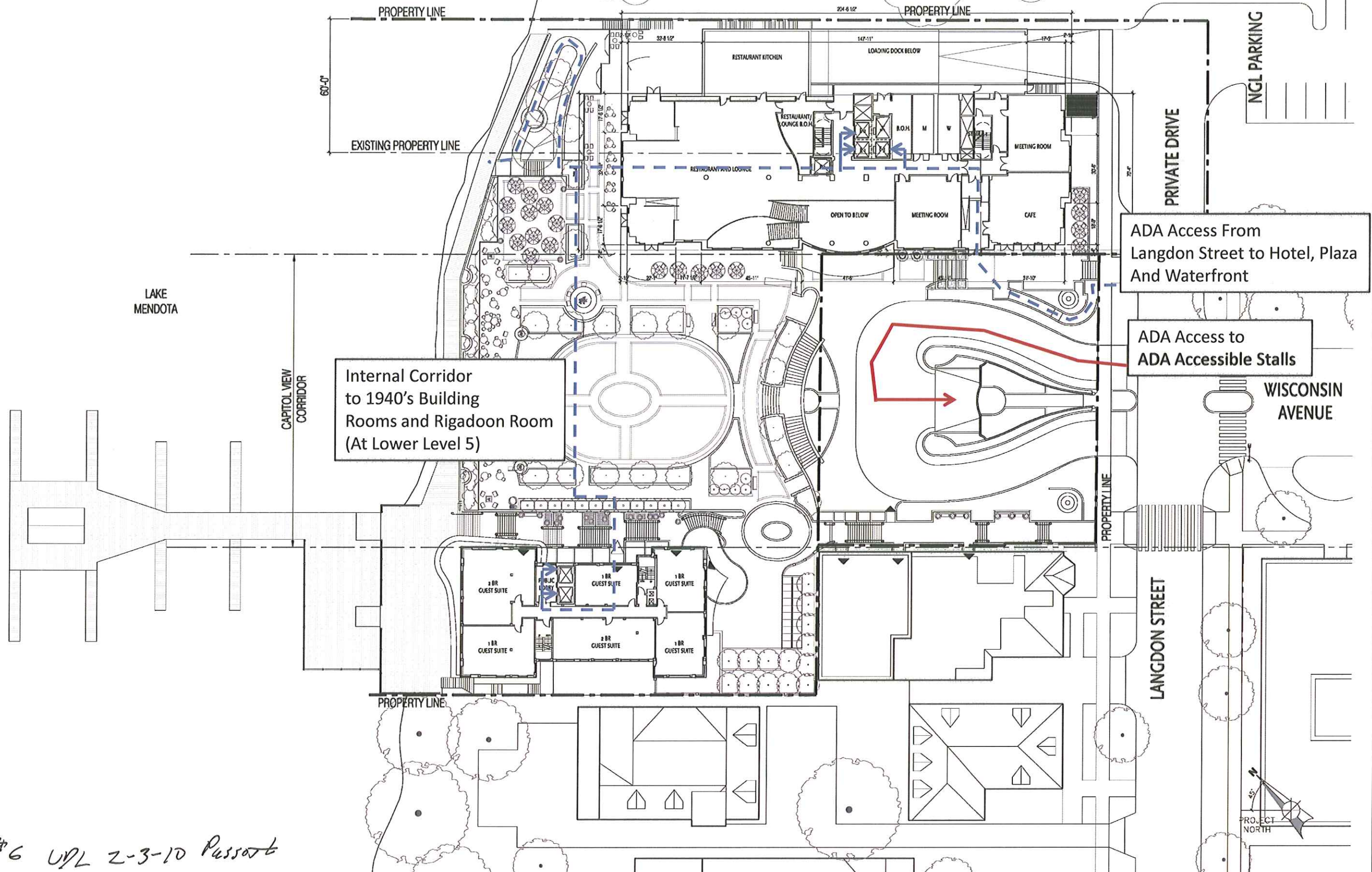
665 Wisconsin Avenue  
Madison, WI 53703

Owner:  
Landmark X, LLC  
22 East Millin Street, Suite 800  
Madison, WI 53703

Developer:  
Hammes Company  
22 East Millin Street, Suite 800  
Madison, WI 53703

Civil Engineer:  
BT<sup>2</sup>, Inc.  
2830 Daly Drive  
Madison, WI 53718

Landscape Architect:  
Ken Balld Design, Inc.  
303 S. Patterson, Suite One  
Madison, WI 53703



ADA Access From  
Langdon Street to Hotel, Plaza  
And Waterfront

ADA Access to  
ADA Accessible Stalls

Internal Corridor  
to 1940's Building  
Rooms and Rigadoon Room  
(At Lower Level 5)

PROJECT NUMBER: 09108.00

DATE: January 27, 2010

REVISIONS

△	08/18/09
△	10/28/09
△	01/13/10
△	01/26/10

SCALE: 1" = 20'-0"

DRAWING NAME:

Floor 1  
Langdon Street

DRAWING NUMBER:

**A1.07**



**ADA ACCESS DIAGRAM**  
Presented to UDC February 3, 2010

ELKUS | MANFREDI  
ARCHITECTS  
  
[Address] 300 A STREET  
BOSTON MASSACHUSETTS 02110  
[Tel] 617-426-1300

**The Edgewater**

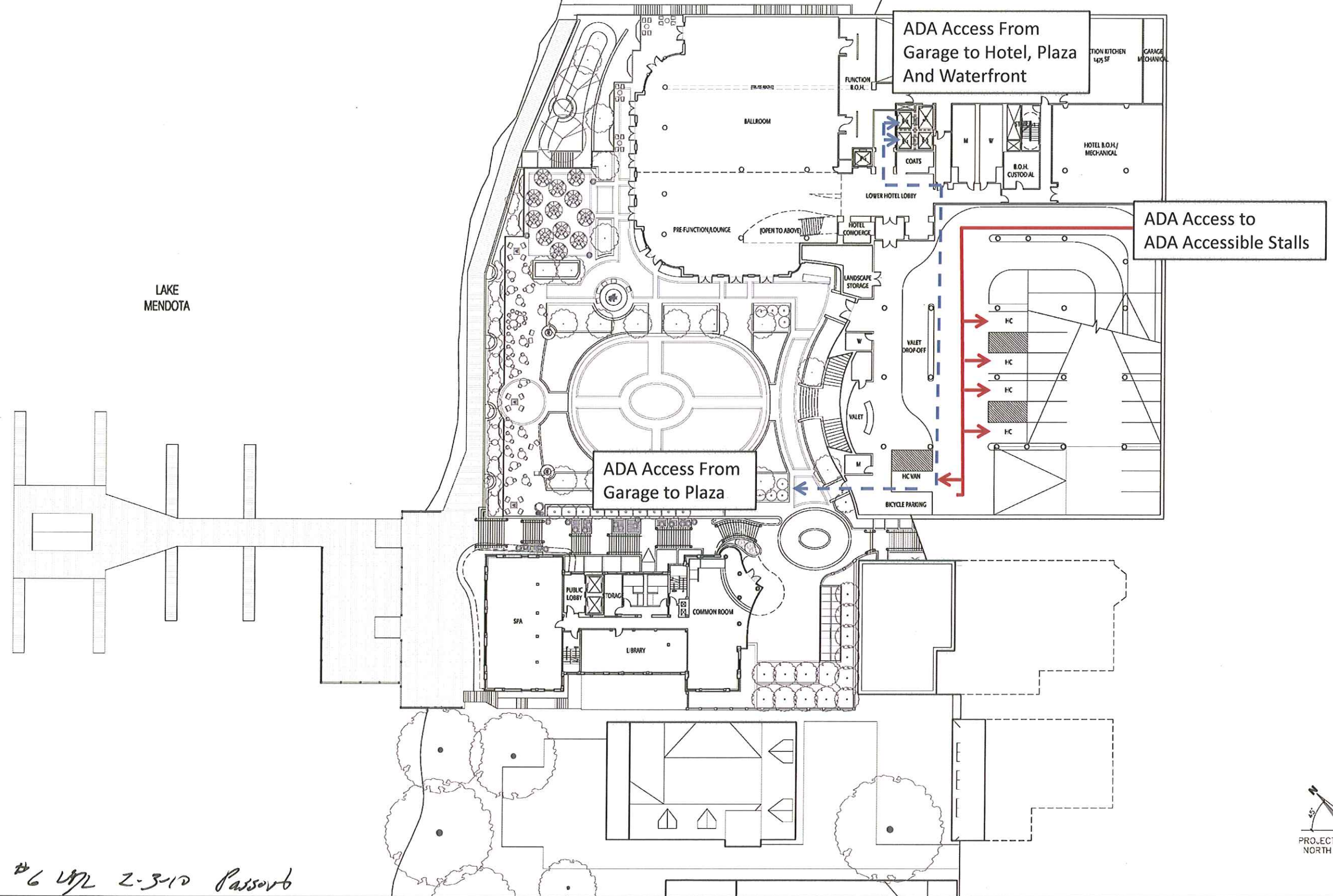
665 Wisconsin Avenue  
Madison, WI 53703

Owner:  
**Landmark X, LLC**  
22 East Millin Street, Suite 800  
Madison, WI 53703

Developer:  
**Hammes Company**  
22 East Millin Street, Suite 800  
Madison, WI 53703

Civil Engineer:  
**BT<sup>2</sup>, Inc.**  
2830 Dairy Drive  
Madison, WI 53718

Landscape Architect:  
**Ken Ball Design, Inc.**  
303 S. Patterson, Suite One  
Madison, WI 53703



LAKE  
MENDOTA

ADA Access From  
Garage to Plaza

ADA Access From  
Garage to Hotel, Plaza  
And Waterfront

ADA Access to  
ADA Accessible Stalls

PROJECT NUMBER: 08108.00

DATE: January 27, 2010

REVISIONS:

△	08/18/09
△	10/28/09
△	01/13/10
△	01/27/10

SCALE: 1" = 20'-0"

DRAWING NAME:  
**Lower Level 2  
Plaza and Ballroom**

DRAWING NUMBER:

**A1.05**



© 2010, ELKUS | MANFREDI ARCHITECTS

#6 UPL 2-3-10 Passorb





UDL Passout #6 2-3-10