

**STORM SEWER PLANT VALUE**  
(Schedule 'A' / Storm Structures)  
**GRANDVIEW COMMONS PHASE 14A**

53B2077

**STRUCTURES**

Description	Quantity	Unit	Unit Cost	Total Cost
H inlet	3	ea	\$ 1,175.00	\$ 3,525.00
Engineering @ 10%				\$ 352.50
<b>Total Cost</b>			<b>\$ 1,292.50</b>	<b>\$ 3,877.50</b>
3X3 SAS W/ INLET CASTING	1	ea	\$ 1,525.00	\$ 1,525.00
Engineering @ 10%				\$ 152.50
<b>Total Cost</b>			<b>\$ 1,677.50</b>	<b>\$ 1,677.50</b>
4X4 SAS W/ INLET CASTING	4	ea	\$ 2,450.00	\$ 9,800.00
Engineering @ 10%				\$ 980.00
<b>Total Cost</b>			<b>\$ 2,695.00</b>	<b>\$ 10,780.00</b>
36" RCP AE	1	ea	\$ 1,290.00	\$ 1,290.00
Engineering @ 10%				\$ 129.00
<b>Total Cost</b>			<b>\$ 1,419.00</b>	<b>\$ 1,419.00</b>
36" AE GATE	1	ea	\$ 1,290.00	\$ 1,290.00
Engineering @ 10%				\$ 129.00
<b>Total Cost</b>			<b>\$ 1,419.00</b>	<b>\$ 1,419.00</b>
Engineering @ 10%				
<b>Total Cost</b>				
Engineering @ 10%				
<b>Total Cost</b>				
Engineering @ 10%				
<b>Total Cost</b>				
Engineering @ 10%				
<b>Total Cost</b>				
Engineering @ 10%				
<b>Total Cost</b>				
Engineering @ 10%				
<b>Total Cost</b>				
Engineering @ 10%				
<b>Total Cost</b>				
Engineering @ 10%				
<b>Total Cost</b>				
Engineering @ 10%				
<b>Total Cost</b>				
Engineering @ 10%				
<b>Total Cost</b>				
Engineering @ 10%				
<b>Total Cost</b>				
<b>GRAND TOTAL COST</b>				<b>\$ 19,173.00</b>

**STORM SEWER PLANT VALUE**  
(Schedule 'A' / Storm Pipes)  
**GRANDVIEW COMMONS PHASE 14A**

53B2077

**PIPES**

Description	Quantity	Unit	Unit Cost	Total Cost
12" RCP	119	LF	\$ 31.65	\$ 3,766.35
Engineering @ 10%				\$ 376.64
<b>Total Cost</b>			<b>\$ 34.82</b>	<b>\$ 4,142.99</b>
30" RCP	257	LF	\$ 64.15	\$ 16,486.55
Engineering @ 10%				\$ 1,648.66
<b>Total Cost</b>			<b>\$ 70.57</b>	<b>\$ 18,135.21</b>
36" RCP	198	LF	\$ 80.65	\$ 15,968.70
Engineering @ 10%				\$ 1,596.87
<b>Total Cost</b>			<b>\$ 88.72</b>	<b>\$ 17,565.57</b>
Engineering @ 10%				
<b>Total Cost</b>				
Engineering @ 10%				
<b>Total Cost</b>				
Engineering @ 10%				
<b>Total Cost</b>				
Engineering @ 10%				
<b>Total Cost</b>				
Engineering @ 10%				
<b>Total Cost</b>				
Engineering @ 10%				
<b>Total Cost</b>				
Engineering @ 10%				
<b>Total Cost</b>				
Engineering @ 10%				
<b>Total Cost</b>				
Engineering @ 10%				
<b>Total Cost</b>				
Engineering @ 10%				
<b>Total Cost</b>				
Engineering @ 10%				
<b>Total Cost</b>				
Engineering @ 10%				
<b>Total Cost</b>				
Engineering @ 10%				
<b>Total Cost</b>				
Engineering @ 10%				
<b>Total Cost</b>				
<b>GRAND TOTAL COST</b>				<b>\$ 39,843.76</b>

Prepared By: JD  
Date: 1/8/2010

**SANITARY SEWER PLANT VALUE**  
(Schedule 'A' / Sanitary Structures)  
**GRANDVIEW COMMONS PHASE 14A**

53B2077

**STRUCTURES**

Description	Quantity	Unit	Unit Cost	Total Cost
4' DIAM SAS	6	ea	\$ 1,989.50	\$ 11,937.00
Engineering @ 10%				\$ 1,193.70
<b>Total Cost</b>			<b>\$ 2,188.45</b>	<b>\$ 13,130.70</b>
-----				
Engineering @ 10%				
<b>Total Cost</b>				
-----				
Engineering @ 10%				
<b>Total Cost</b>				
-----				
Engineering @ 10%				
<b>Total Cost</b>				
-----				
Engineering @ 10%				
<b>Total Cost</b>				
-----				
Engineering @ 10%				
<b>Total Cost</b>				
-----				
Engineering @ 10%				
<b>Total Cost</b>				
-----				
Engineering @ 10%				
<b>Total Cost</b>				
-----				
Engineering @ 10%				
<b>Total Cost</b>				
-----				
Engineering @ 10%				
<b>Total Cost</b>				
-----				
Engineering @ 10%				
<b>Total Cost</b>				
-----				
Engineering @ 10%				
<b>Total Cost</b>				
-----				
Engineering @ 10%				
<b>Total Cost</b>				
-----				
Engineering @ 10%				
<b>Total Cost</b>				
-----				
Engineering @ 10%				
<b>Total Cost</b>				
-----				
Engineering @ 10%				
<b>Total Cost</b>				
-----				
<b>GRAND TOTAL COST</b>				<b>\$ 13,130.70</b>

Total Sanitary Sewer Improvements:     \$ 54,814.65

Prepared By: JD  
Date: 1/8/2010

**SANITARY SEWER PLANT VALUE**  
(Schedule 'A' / Sanitary Pipes)  
**GRANDVIEW COMMONS PHASE 14A**

53B2077

**PIPES**

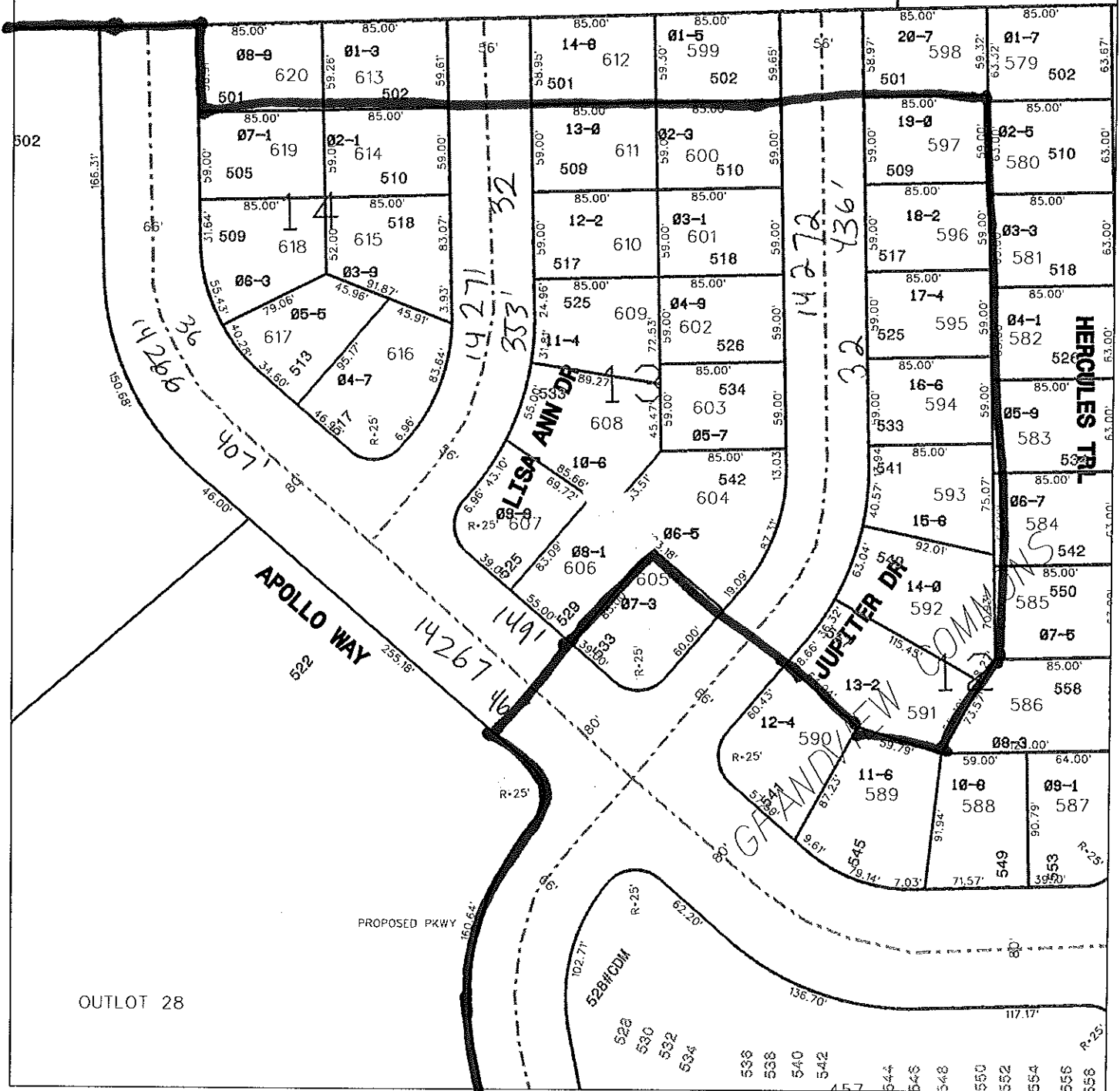
Description	Quantity	Unit	Unit Cost	Total Cost
8" PVC	1203	LF	\$31.50	\$ 37,894.50
Engineering @ 10%				\$ 3,789.45
<b>Total Cost</b>			<b>\$ 34.65</b>	<b>\$ 41,683.95</b>
-----				
Engineering @ 10%				
<b>Total Cost</b>				
-----				
Engineering @ 10%				
<b>Total Cost</b>				
-----				
Engineering @ 10%				
<b>Total Cost</b>				
-----				
Engineering @ 10%				
<b>Total Cost</b>				
-----				
Engineering @ 10%				
<b>Total Cost</b>				
-----				
Engineering @ 10%				
<b>Total Cost</b>				
-----				
Engineering @ 10%				
<b>Total Cost</b>				
-----				
Engineering @ 10%				
<b>Total Cost</b>				
-----				
Engineering @ 10%				
<b>Total Cost</b>				
-----				
Engineering @ 10%				
<b>Total Cost</b>				
-----				
Engineering @ 10%				
<b>Total Cost</b>				
-----				
Engineering @ 10%				
<b>Total Cost</b>				
-----				
Engineering @ 10%				
<b>Total Cost</b>				
-----				
Engineering @ 10%				
<b>Total Cost</b>				
-----				
<b>GRAND TOTAL COST</b>				<b>\$ 41,683.95</b>

Prepared By: JD  
Date: 1/8/2010





# GRAND VIEW COMMONS PH 14A 53B2077



Date: 1/8/2010

Time: 1:32:57 PM

Scale: 1 in = 100 Ft

Notes: The City makes no representation about the accuracy of these records and shall not be liable for any damage  
Field View