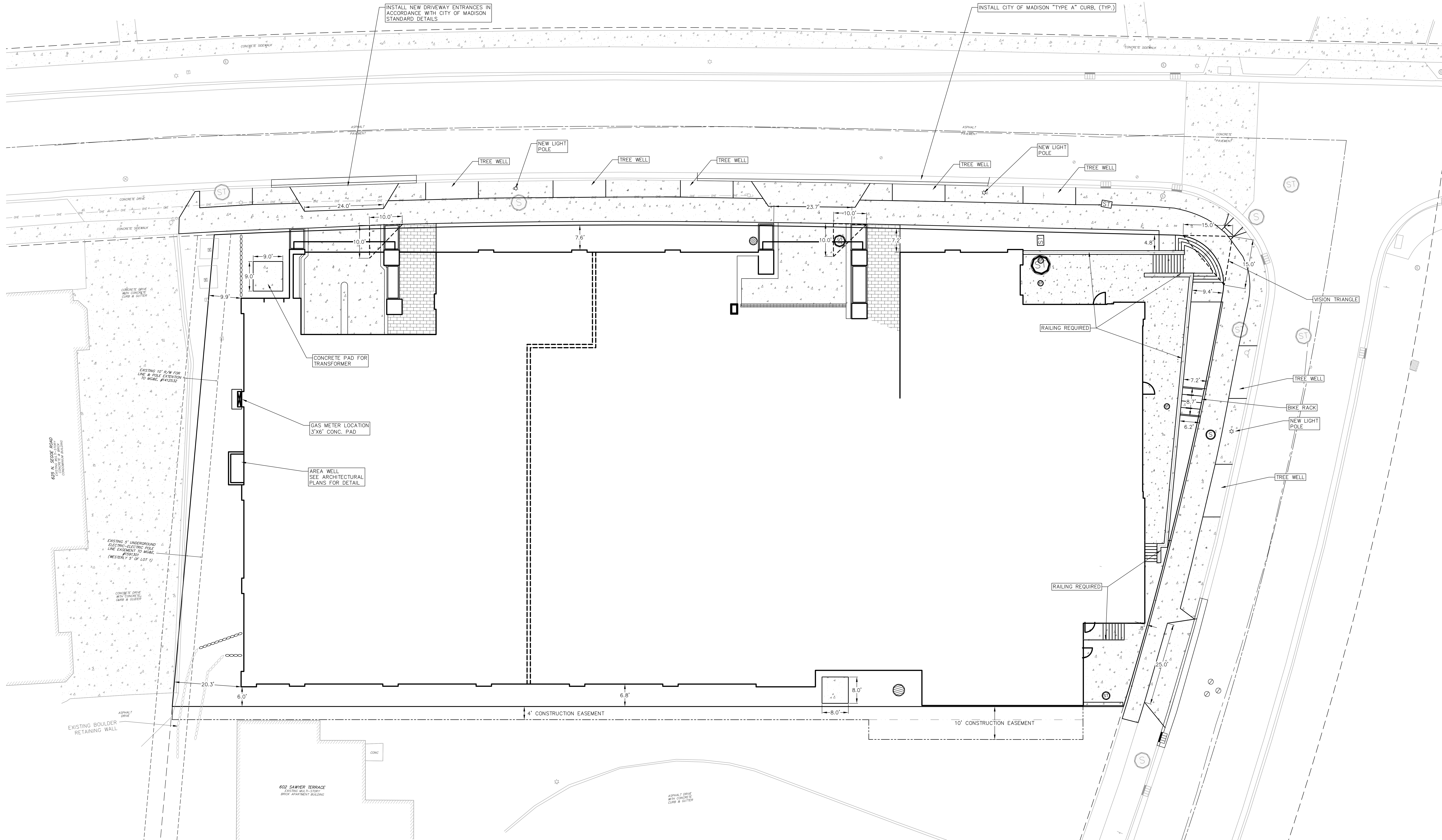
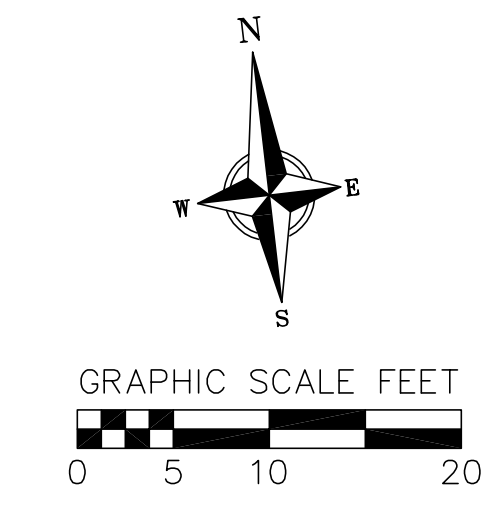
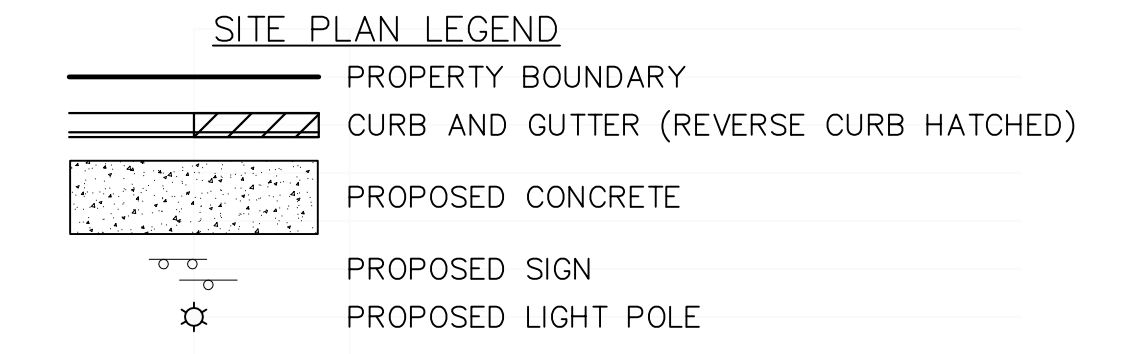


**SITE CONSTRUCTION NOTES:**

1. ALL WORK SHALL BE PERFORMED BY A CITY-LICENSED CONTRACTOR.
2. CONCRETE SIDEWALK TO BE 5" THICK, CONSTRUCTED ON A BASE OF 4" COMPACTED SAND OR CRUSHED STONE.
3. CONCRETE FOR DRIVEWAYS AND SIDEWALK AT DRIVEWAY ENTRANCES SHALL BE 7" THICK, CONSTRUCTED ON A BASE OF 5" COMPACTED SAND OR CRUSHED STONE.
4. CURB FACE HEIGHT IN DRIVEWAYS SHALL BE 6 INCHES. CURB FACE IN PARKING LOTS SHALL BE 4 INCHES.
5. CONTRACTOR SHALL DEEP TILL ANY DISTURBED AREAS AFTER CONSTRUCTION IS COMPLETE AND BEFORE RESTORING.
6. CONTRACTOR TO OBTAIN ANY NECESSARY UTILITY CONNECTION, DEMOLITION, DRIVEWAY CONNECTION, RIGHT-OF-WAY AND EXCAVATION PERMITS PRIOR TO CONSTRUCTION.
7. ALL ABANDONED DRIVEWAYS ADJACENT TO THE SITE SHALL BE REPLACED WITH CURB AND THE TERRACE SHALL BE RESTORED WITH GRASS.
8. ANY SIDEWALK AND CURB & GUTTER ADJUTING THE PROPERTY SHALL BE REPLACED IF IT IS DAMAGED DURING CONSTRUCTION OR IF THE CITY ENGINEERING DEPARTMENT DETERMINES THAT IT IS NOT AT A DESIRABLE GRADE, REGARDLESS OF WHETHER THE CONDITION EXISTED PRIOR TO BEGINNING CONSTRUCTION.

**DEMOLITION/EROSION CONTROL NOTES:**

1. CONTRACTOR SHALL KEEP ALL CITY STREETS FREE AND CLEAR OF CONSTRUCTION RELATED DIRT/DUST/DEBRIS.
2. COORDINATE EXISTING UTILITY REMOVAL/ABANDONMENT WITH LOCAL AUTHORITIES AND UTILITY COMPANIES HAVING JURISDICTION.
3. ALL SAWCUTTING SHALL BE FULL DEPTH TO PROVIDE A CLEAN EDGE TO MATCH NEW CONSTRUCTION. MATCH EXISTING ELEVATIONS AT POINTS OF CONNECTION FOR NEW AND EXISTING PAVEMENT, CURB, SIDEWALKS, ETC. ALL SAWCUT LOCATIONS SHOWN ARE APPROXIMATE AND MAY BE FIELD ADJUSTED TO ACCOMMODATE CONDITIONS, JOINTS, MATERIAL TYPE, ETC. REMOVE MINIMUM AMOUNT NECESSARY FOR INSTALLATION OF PROPOSED IMPROVEMENTS.
4. CONTRACTOR SHALL PROVIDE AND SHALL BE RESPONSIBLE FOR ANY NECESSARY TRAFFIC CONTROL SIGNAGE AND SAFETY MEASURES DURING DEMOLITION AND CONSTRUCTION OPERATIONS WITHIN OR NEAR THE PUBLIC ROADWAY.
5. COORDINATE TREE REMOVAL WITH LANDSCAPE ARCHITECT. ALL TREES TO BE REMOVED SHALL BE REMOVED IN THEIR ENTIRETY AND STUMPS SHALL BE GROUND TO 12" BELOW PROPOSED SUBGRADE.
6. IF APPLICABLE, PROVIDE TREE PROTECTION FENCING PRIOR TO CONSTRUCTION OPERATIONS. MAINTAIN THROUGHOUT CONSTRUCTION.
7. ALL LIGHT POLES TO BE REMOVED FROM PRIVATE PROPERTY SHALL BE REMOVED IN THEIR ENTIRETY, INCLUDING BASE AND ALL APPURTENANCES. COORDINATE ABANDONMENT OF ELECTRICAL LINES WITH ELECTRICAL ENGINEER AND OWNER PRIOR TO DEMOLITION.
8. CONTRACTOR SHALL CLOSE ALL ABANDONED DRIVEWAYS BY REPLACING THE CURB IN FRONT OF THE DRIVEWAYS AND RESTORING THE TERRACE WITH GRASS.
9. CONTRACTOR SHALL OBTAIN ANY NECESSARY DEMOLITION AND UTILITY PLUGGING PERMITS.
10. THE LOCATION OF EXISTING UNDERGROUND UTILITIES AS SHOWN ON THE PLANS HAS BEEN DETERMINED FROM THE BEST AVAILABLE INFORMATION AND IS GIVEN FOR THE CONVENIENCE OF THE CONTRACTOR. THE OWNER AND THE ENGINEER DO NOT ASSUME RESPONSIBILITY IN THE EVENT THAT DURING CONSTRUCTION, UTILITIES OTHER THAN THOSE SHOWN MAY BE ENCOUNTERED, AND THAT THE ACTUAL LOCATION OF THOSE WHICH ARE SHOWN MAY BE DIFFERENT FROM THE LOCATION AS SHOWN ON THE PLANS.
11. ANY DAMAGE TO THE CITY PAVEMENT, INCLUDING DAMAGE RESULTING FROM CURB REPLACEMENT, WILL REQUIRE RESTORATION IN ACCORDANCE WITH THE CITY ENGINEERING PATCHING CRITERIA.



**UTILITY NOTES:**

- SANITARY & STORM SEWER LENGTHS SHOWN ARE FROM CENTER OF STRUCTURE TO CENTER OF STRUCTURE. STORM SEWER END SECTIONS ARE INCLUDED IN THE LENGTH AND SLOPE OF THE PIPE.
- CONTRACTOR SHALL INVESTIGATE ALL UTILITY CROSSINGS PRIOR TO CONSTRUCTION AND NOTIFY ENGINEER OF ANY CONFLICTS.
- CONTRACTOR SHALL BE RESPONSIBLE FOR ADJUSTING ALL UTILITY STRUCTURES (MANHOLE RIMS, WATER VALVES, AND CURB STOPS), IF NECESSARY.
- CONTRACTOR SHALL OBTAIN ANY NECESSARY WORK IN RIGHT-OF-WAY, EXCAVATION, UTILITY CONNECTION, PLUGGING, ABANDONMENT, AND DRIVEWAY CONNECTION PERMITS PRIOR TO CONSTRUCTION.
- FOR ALL SEWER AND WATER MAIN CROSSINGS: PROVIDE MINIMUM 18" SEPARATION WHEN WATER MAIN CROSSES BELOW SEWER AND MINIMUM 6" SEPARATION WHEN WATER MAIN CROSSES ABOVE SEWER.
- IF DEWATERING OPERATIONS EXCEED 70 GALLONS PER MINUTE OF PUMPING CAPACITY, A DEWATERING WELL PERMIT SHALL BE OBTAINED FROM THE DEPARTMENT PRIOR TO STARTING ANY DEWATERING ACTIVITIES.
- A COPY OF THE APPROVED UTILITY PLANS, SPECIFICATIONS AND PLUMBING PERMIT APPROVAL LETTER SHALL BE ON-SITE DURING CONSTRUCTION AND OPEN TO INSPECTION BY AUTHORIZED REPRESENTATIVES OF THE DEPARTMENT OF SAFETY AND PROFESSIONAL SERVICES AND OTHER LOCAL INSPECTORS.
- STORM BUILDING SEWER PIPE SHALL CONFORM TO ONE OF THE STANDARDS LISTED IN TABLE 384.30-6 OF SPS 384.30(3)(c).
- PRIVATE WATER SERVICES AND PRIVATE WATER MAINS SHALL CONFORM TO ONE OF THE STANDARDS LISTED IN TABLE 384.30-7 OF SPS 384.30(4)(d).
- PRIVATE WATER HYDRANTS SHALL BE YELLOW IN COLOR.

- A MEANS TO LOCATE BURIED UNDERGROUND EXTERIOR NON-METALLIC SEWERS/MAINS AND WATER SERVICES/MAINS MUST BE PROVIDED WITH TRACER WIRE OR OTHER METHODS IN ORDER TO BE LOCATED PER SPS 382.10(11)(h) AND SPS 382.40(8)(k).
- EXTERIOR WATER SUPPLY PIPING SETBACKS AND CROSSINGS SHALL BE IN ACCORDANCE WITH SPS 382.40(8)(b).
- NO PERSON MAY ENGAGE IN PLUMBING WORK IN THE STATE UNLESS LICENSED TO DO SO BY THE DEPARTMENT OF SAFETY AND PROFESSIONAL SERVICES PER S.145.06.
- SITE CONTRACTOR SHALL LEAVE SANITARY AND WATER LATERALS FIVE (5) FEET SHORT (HORIZONTALLY) FROM THE BUILDING. BUILDING PLUMBER SHALL VERIFY SIZE, LOCATION, AND INVERT ELEVATION OF PROPOSED SANITARY AND WATER LATERALS.
- CONTRACTOR SHALL FIELD VERIFY THE SIZE, TYPE, LOCATION, AND ELEVATION OF EXISTING UTILITIES PRIOR TO INSTALLING ANY ON-SITE UTILITIES OR STRUCTURES. CONTACT ENGINEER PRIOR TO INSTALLATION IF DISCREPANCY EXISTS WITHIN THESE PLANS.
- PROPOSED UTILITY SERVICE LINES SHOWN ARE APPROXIMATE. COORDINATE THE EXACT LOCATIONS WITH THE PLUMBING DRAWINGS. COORDINATE THE LOCATIONS WITH THE PLUMBING CONTRACTOR AND/OR OWNER'S CONSTRUCTION REPRESENTATIVE PRIOR TO INSTALLATION OF ANY NEW UTILITIES.
- CONTRACTOR SHALL BE RESPONSIBLE FOR COORDINATING THE RELOCATION OF ANY UTILITIES ENCOUNTERED AND REPLACEMENT OF ANY UTILITIES DAMAGED WITHIN INFLUENCE ZONE OF NEW CONSTRUCTION. CONTACT ENGINEER IF THE EXISTING UTILITIES VARY APPRECIABLY FROM THE PLANS.
- ALL WATER MAIN AND SERVICES SHALL BE INSTALLED AT A MINIMUM DEPTH OF 6.5' FROM TOP OF FINISHED GROUND ELEVATION TO TOP OF MAIN.
- IT IS THE CONTRACTOR'S RESPONSIBILITY TO VERIFY THAT THE EXISTING VALVES WILL HOLD THE PRESSURE TEST PRIOR TO CONNECTION. THE CITY IS NOT RESPONSIBLE FOR ANY COSTS INCURRED DUE TO CONNECTION. IF A NEW VALVE IS REQUIRED, THE APPLICANT WILL BE REQUIRED TO INSTALL ONE AT THEIR EXPENSE, AT THE POINT OF CONNECTION.
- CLEAN OUT ALL EXISTING AND PROPOSED STORM INLETS AND CATCH BASINS AT THE COMPLETION OF CONSTRUCTION.

**PROPOSED UTILITY LEGEND**

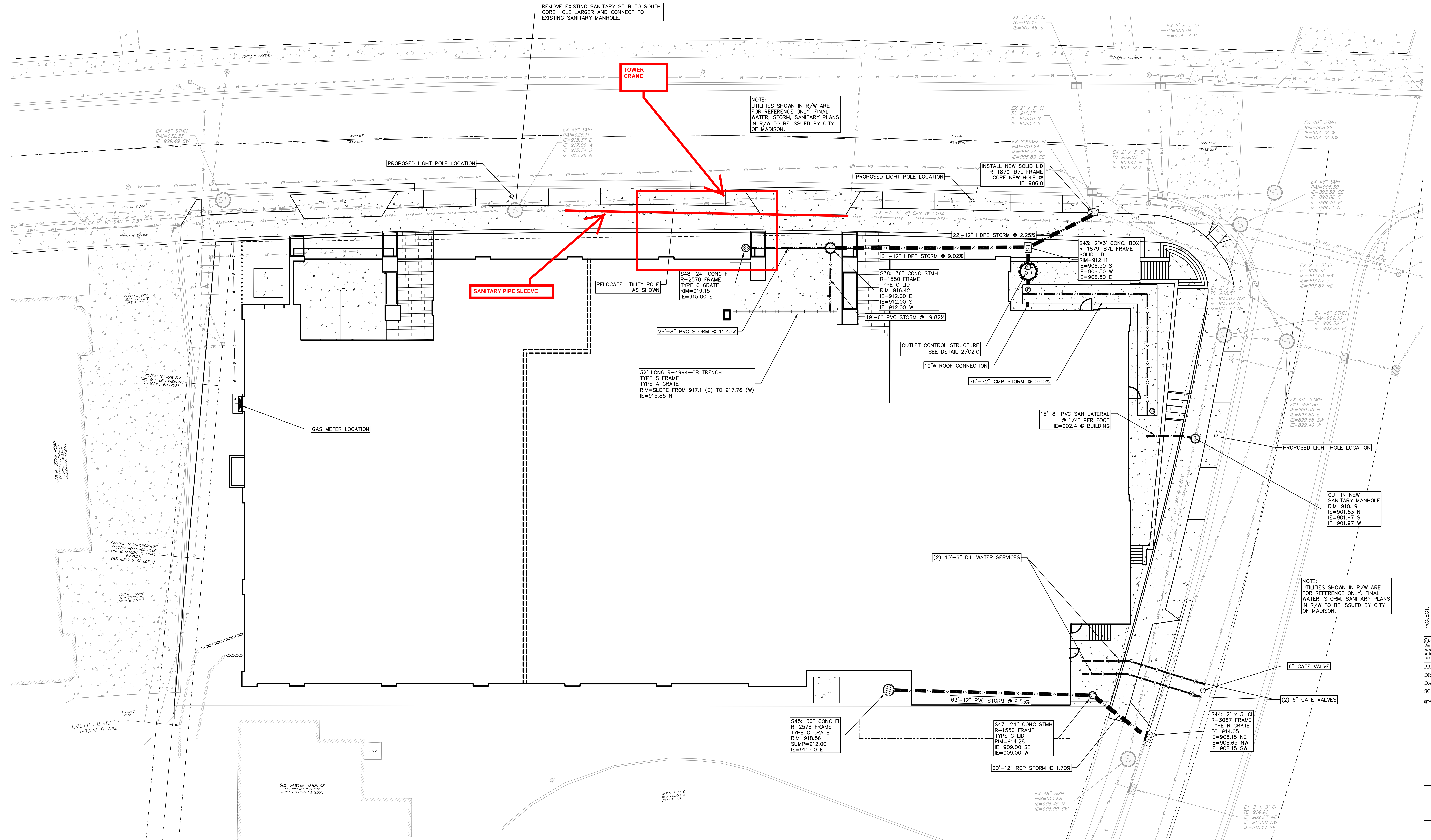
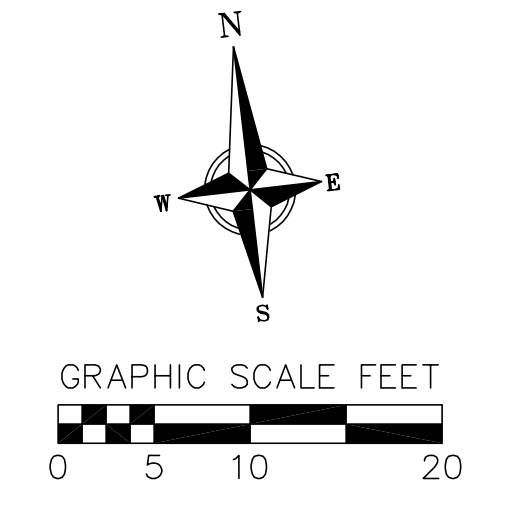
- STORM SEWER PIPE
- STORM SEWER MANHOLE
- STORM SEWER ENDWALL
- STORM SEWER CURB INLET
- STORM SEWER CURB INLET W/MANHOLE
- STORM SEWER FIELD INLET
- ROOF DRAIN CLEANOUT
- SANITARY SEWER PIPE (GRAVITY)
- SANITARY SEWER PIPE (FORCE MAIN)
- SANITARY SEWER LATERAL PIPE
- SANITARY SEWER MANHOLE
- SANITARY SEWER CLEANOUT
- WATER MAIN
- WATER SERVICE LATERAL PIPE
- FIRE HYDRANT
- WATER VALVE
- CURB STOP
- WATER VALVE MANHOLE
- PROPOSED PIPE INSULATION
- GAS MAIN
- ELECTRIC SERVICE

**ABBREVIATIONS:**

- STMH - STORM MANHOLE
- P1 - FIELD INLET
- C1 - CURB INLET
- CB - CATCH BASIN
- EW - ENDWALL
- SMH - SANITARY MANHOLE

**EX. SANITARY SEWER CHART**

P1	8" @ 4.57%	CAPACITY=1,150 GPM
P2	8" @ 7.10%	CAPACITY=1,440 GPM
P3	8" @ 4.87%	CAPACITY=2,169 GPM
PROP. BUILDING 1200 DFU (PRELIMINARY ESTIMATE)= 240 GPM		



PROJECT: FREY STREET - MIXED USE DEVELOPMENT  
CLIENT: FREY STREET LODGING ASSOCIATES, LLC  
C/O RAYMOND MANAGEMENT COMPANY  
3000 GREENWAY BOULEVARD  
MADISON, WI 53704

DATE: 06-06-2017  
SCALE: 1"=10'  
CITY SUB #: 06-06-2017