

**APPLICATION FOR  
URBAN DESIGN COMMISSION  
REVIEW AND APPROVAL**

**AGENDA ITEM #** \_\_\_\_\_  
**Project #** \_\_\_\_\_

34510

DATE SUBMITTED: <u>June 18, 2014</u>	<b>Action Requested</b>
UDC MEETING DATE: <u>June 25, 2014</u>	<input type="checkbox"/> Informational Presentation
	<input type="checkbox"/> Initial Approval and/or Recommendation
	<input checked="" type="checkbox"/> Final Approval and/or Recommendation

PROJECT ADDRESS: 633 N. Henry Street

ALDERMANIC DISTRICT: Ledell Zellers - District #2

OWNER/DEVELOPER (Partners and/or Principals)	ARCHITECT/DESIGNER/OR AGENT:
<u>Jeff Houden &amp; Chris Houden</u>	<u>Knothe &amp; Bruce Architects, LLC</u>
<u>Madison, WI</u>	<u>7601 University Avenue, Suite 201</u>
	<u>Middleton, Wisconsin 53562</u>

CONTACT PERSON: J. Randy Bruce/Knothe & Bruce Architects, LLC

Address: 7601 University Avenue, Suite 201  
Middleton, Wisconsin 53562

Phone: 608-836-3690

Fax: 608-836-6934

E-mail address: [rbruce@knothebruce.com](mailto:rbruce@knothebruce.com)

CITY OF MADISON

JUN 18 2014

12:23 PM  
Planning & Community  
& Economic Development

TYPE OF PROJECT:

(See Section A For:)

- Planned Unit Development (PUD)
  - General Development Plan (GDP)
  - Specific Implementation Plan (SIP)
- Planned Community Development (PCD)
  - General Development Plan (GDP)
  - Specific Implementation Plan (SIP)
- Planned Residential Development (PRD)
- New Construction or Exterior Remodeling in an Urban Design District\* (A public hearing is required as well as a fee)
- School, Public Building or Space (Fee may be required)
- New Construction or Addition to or Remodeling of a Retail, Hotel, or Motel Building Exceeding 50,000 Sq.Ft.
- Planned Commercial Site

(See Section B for:)

- New Construction or Exterior Remodeling in C4 District (Fee required)

(See Section C for:)

- R.P.S.M. Parking Variance (Fee required)

(See Section D for:)

- Comprehensive Design Review\* (Fee required)
- Street Graphics Variance\* (Fee Required)
- Other Conditional Use

\*Public Hearing Required (Submission Deadline 3 Weeks in Advance of Meeting Date)

June 18, 2014

Urban Design Commission  
City of Madison  
215 Martin Luther King Jr. Blvd.  
PO Box 2985  
Madison, WI 53701

Re: Minor Alteration to Planned Development  
633 N Henry St.  
Madison, WI

KBA Project # 0804

Dear Mr. Martin,

The following alterations have been made to the plans since the Plan Commission approval on February 5, 2013 and are submitted for your approval.

Elevations: Sheets A-2.1 – A-2.3:

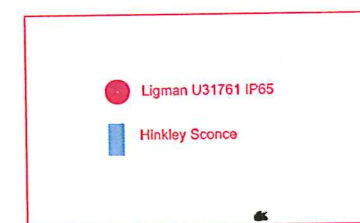
- We are proposing to add exterior lighting to the Iota Court and Henry Street facades.

Thank you for your time in reviewing our proposal.

Sincerely,

J. Randy Bruce, AIA  
Managing Member





1 ELEVATION ALONG IOTA COURT  
1/8" = 1'-0"



2 ELEVATION ALONG HENRY STREET  
1/8" = 1'-0"

Revisions  
Issued For Preliminary Bidding: March 14, 2013  
Contract Set: July 1, 2013  
Issued for Plan Review: August 2, 2013  
Re-issued for Plan Review: August 14, 2013  
Issued for Construction: September 3, 2013  
Minor Alteration: January 13, 2014

Project Title  
**The Waterfront Apartments**

633 N. Henry Street  
Madison, WI  
Drawing Title  
**Elevations**

Project No. **0804** Drawing No. **A-2.1**

This document contains confidential or proprietary information of Knothe & Bruce Architects. Neither the document nor the information herein is to be reproduced, distributed, used, or disclosed, either in whole or in part, except as specifically authorized by Knothe & Bruce Architects. Knothe & Bruce Architects is a Limited Liability Company of Wisconsin.



1 **SOUTHEAST ELEVATION**  
A-2.2 V/S = 1'-0"



2 **NORTHEAST ELEVATION**  
A-2.2 V/S = 1'-0"

Revisions

- Issued For Preliminary Bidding: March 14, 2013
- Contract Set: July 1, 2013
- Issued for Plan Review: August 2, 2013
- Re-issued for Plan Review: August 14, 2013
- Issued for Construction: September 3, 2013
- Minor Alteration: January 13, 2014

Project Title

**The Waterfront  
Apartments**

633 N. Henry Street  
Madison, WI

Drawing Title  
**Elevations**

Project No.

**0804**

Drawing No.

**A-2.2**

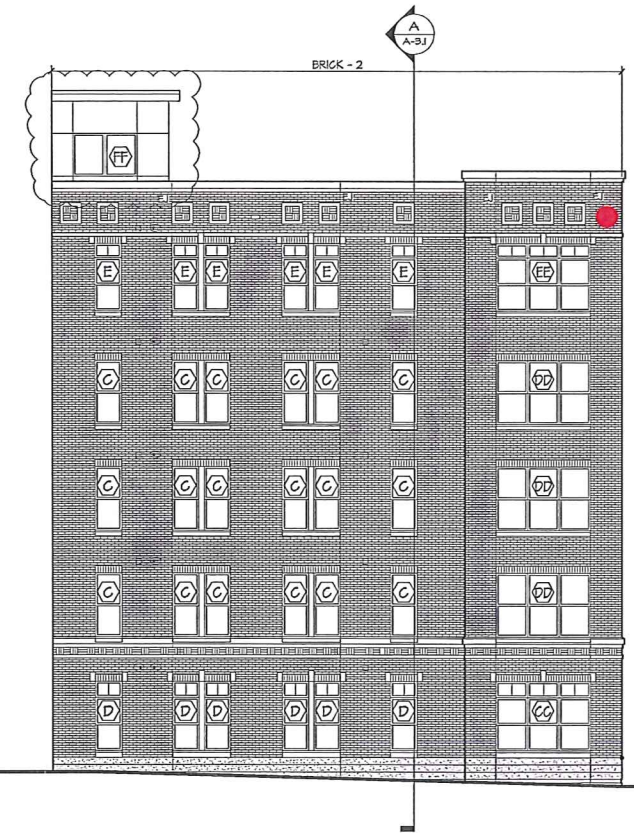
This document contains confidential or proprietary information of Knothe & Bruce Architects. Neither the document nor the information herein is to be reproduced, distributed, copied, or disclosed other than in whole or in part, except as specifically authorized by Knothe & Bruce Architects. Knothe & Bruce Architects is a limited liability company of Wisconsin.

Consultant

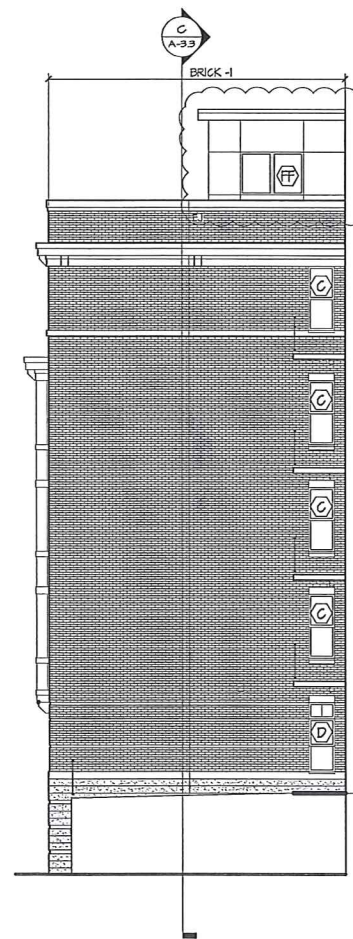
Notes



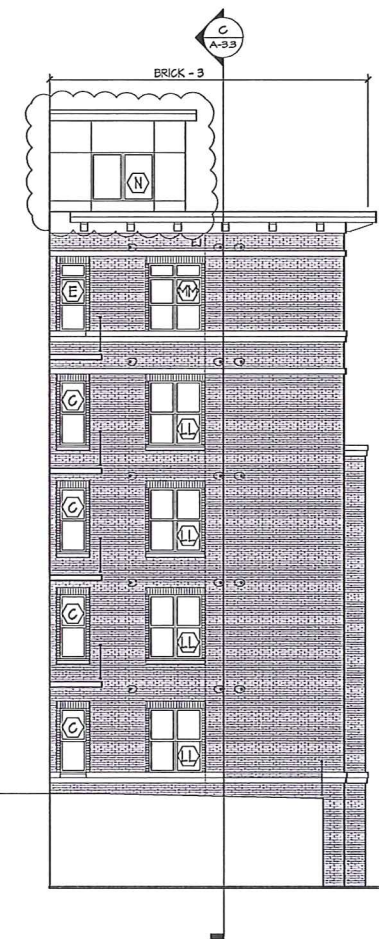
1 SOUTH PLAZA ELEVATIONS  
A-23 1/8" = 1'-0"



2 SOUTH PLAZA ELEVATIONS  
A-23 1/8" = 1'-0"



3 NORTH PLAZA ELEVATIONS  
A-23 1/8" = 1'-0"



4 NORTH PLAZA ELEVATIONS  
A-23 1/8" = 1'-0"

EXTERIOR MATERIAL SCHEDULE			
BUILDING MATERIAL	MATERIAL	MANUFACTURER	COLOR
COMPOSITE BOARD AND TRIM	COMPOSITE	SMART SIDE	TBD
METAL PANEL	METAL	GMS, COATED METALS GROUP	TBD
WINDOW TRIM	COMPOSITE	SMART SIDE	TBD
WINDOWS	FIBERGLASS	MARVIN ALL ULTREX	TBD
1 BRICK VENEER #1	MASONRY	TBD	TBD
2 BRICK VENEER #2	MASONRY	TBD	TBD
3 BRICK VENEER #3	MASONRY	TBD	TBD
MORTAR			COLOR TO MATCH MASONRY
FLASHING	STEEL	PAC GLAD	MATCH TO ADJACENT MATERIAL
PRECAST SILL	PRECAST	EDWARDS	TBD
DECK TRIM	STEEL CHANNEL		TBD
RAILINGS	ALUMINUM	MILLIANS	BLACK
ENTRANCE DOORS	ALUMINUM	T.B.D.	TBD
BASMENT WINDOWS	ALUMINUM	T.B.D.	TBD
GARAGE MAN DOOR	STEEL	T.B.D.	TBD
OVERHEAD GARAGE DOOR	ALUMINUM	T.B.D.	TBD

Revisions  
Issued For Preliminary Bidding: March 14, 2013  
Contract Set: July 1, 2013  
Issued for Plan Review: August 2, 2013  
Re-issued for Plan Review: August 14, 2013  
Issued for Construction: September 3, 2013  
Minor Alteration: January 13, 2014

Project Title  
**The Waterfront  
Apartments**

633 N. Henry Street  
Madison, WI  
Drawing Title  
**Elevations**

Project No. Drawing No.  
**0804 A-23**

This document contains confidential or proprietary information of Knothe & Bruce Architects. Further the document and the information herein is to be reproduced, distributed, sold, or modified, either in whole or in part, without the express written consent of Knothe & Bruce Architects. Knothe & Bruce Architects is a Limited Liability Company of Wisconsin.



The Waterfront  
Exterior Lighting  
June 18, 2014





The Waterfront  
Exterior Lighting  
June 18, 2014





Begin your search here..



Home | Shop by Category | Shop by Collection | Best Sellers | Sales | No Tax\* | Free Shipping\* | Free Returns\*

Home » Trafalgar » Outdoor Wall Lights » Hinkley Lighting 1319MO

Hinkley Lighting Trafalgar 3 Light Outdoor Wall Lantern in Mocha 1319MO  
SKU # 1319MO



IN STOCK  
**56**  
04/23/2014

**\$459.00 per each**

List Price \$688.50  
You Save \$229.50 (33%)

Select from multiple options

- 1. Finish
- 2. Number Of Bulbs
- 3. System

[Show All Options](#)

Quantity   I want more than 100

or

[Zoom Image](#)

Hinkley Lighting Trafalgar 3 Light Outdoor Wall Lantern in Mocha 1319MO

[General Information](#) | [Manufacturer's Catalog\(s\)](#) | [Questions](#)

Hinkley Lighting Trafalgar 3 Light Outdoor Wall Lantern in Mocha 1319MO  
X Large Wall Outdoor

Brand Information

- Brand: Hinkley Lighting
- Collection: Trafalgar
- SKU: 1319MO
- UPC: 00640665131918

Design Information

- Category: Outdoor Wall Lights
- Finish: Mocha
- Glass: Clear Seedy Glass
- Material: Cast Aluminum

Dimensions and Weight

- Width: 12.00 in.
- Height: 26.50 in.
- Extension/Depth: 16.00 in.
- Backplate/Canopy Width: 10.00 in.
- Backplate/Canopy Length: 18.75 in.
- Weight: 24.00 lb.

Bulb Information

- Bulbs Included: No
- Primary Bulb(s): 3 x 40 watts Candelabra

Product Rating

- Voltage: 120
- Outdoor Rating: Outdoor Rated
- Safety Rating: c-UL-us Wet

Other Specifications

- Ships Via: UPS ( FREE SHIPPING )
- System: Standard

Have a question about this product? Ask us!

U h a i n g # S u r g x f w

[Hinkley Lighting 1314MB](#)  
Trafalgar 1 Light Outdoor Wall Lantern in Museum Black  
**\$139.00**

[Hinkley Lighting 1316MB](#)  
Trafalgar 1 Light Outdoor Wall Lantern in Museum Black  
**\$73.00**

[Hinkley Lighting 1319MB](#)  
Trafalgar 3 Light Outdoor Wall Lantern in Museum Black  
**\$459.00**

[Hinkley Lighting 1315MB](#)  
Trafalgar 3 Light Outdoor Wall Lantern in Museum Black  
**\$329.00**

[Hinkley Lighting 1314MO](#)  
Trafalgar 1 Light Outdoor Wall Lantern in Mocha  
**\$139.00**

[See the entire Trafalgar Collection](#)



Free Returns  
Within 30 days of purchase for like new, uninstalled items.



Additional Details Hinkley Lighting Lights Call 866-344-3875 Live Chat Now Login 110% Price Match Find a lower price and we'll beat it by 10% of the difference. My Lists My Cart

Hinkley Lighting's Catalog(s)

Click on the catalog to view the PDF in your browser or right-click and hit "Save As" to save the PDF to your computer.



K 1gn0h | #D1jkwzj# Exv1gthw#K xxuv

Call For Our Best Price - 866.344.3875

Sales Representatives - 866.344.3875 Mon - Fri 8am to Midnight EST Sat & Sun 9am to Midnight EST

Customer Service - 866.344.3875 Mon - Thu 9am to 7pm EST Friday 9am to 5:30pm EST

Customer Reviews

There are no reviews for this product. Currently review requests are being sent to Lighting New York customers that have already purchased and received the product.

Questions about Hinkley Lighting 1319MO

Ask us a question...

Be the first to ask a question about this product!

Sign up to receive special offers by email!

Input field for email address

Sign Up

- Shop Now
Shop by Category
Shop by Collection
Shop Best Sellers
Shop Sales
Customer Service
Contact Us
Shipping
Ordering Info
Guarantee
Privacy Policy
Return Policy
Security
Pricing Disclaimer
Low Price Guarantee
My Account
Log In (Sign Up)
My Orders & Quotes
My Lists
My Addresses
My Product Reviews
Payment Accepted

Feel Secure Shopping at Hinkley Lighting Lights



BBB Rating: A+ as of 4/23/2014 Click for Review

Have a question about this product? Ask us!

Live Chat Submit a Question

# LUMINAIRE SPECIFICATION



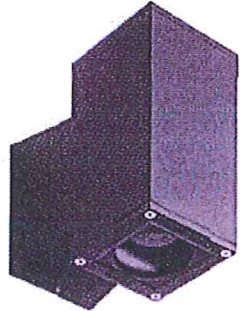
PROJECT : WATERFRONT

DATE :

LOCATION :

QUANTITY : NOTE :

IP65 : Suitable for wet locations  
IK08 : Impact resistance (vandal resistant)



## U31761 - 12W - 3000K Jet 4" square wall down light LED

### Product Type

Wall luminaires with a selection of beam distributions for various downward or upward lighting requirements. Designed to illuminate the wall surface and for light accents on vertical surfaces.

They are suitable for many applications such as residential and pedestrian areas, shopping malls, parks and gardens, as well as commercial, historic or modern architectural interiors and exteriors. The luminaires have features such as long life, limited maintenance and constant lifetime performance. The cool lens is perfect for public and pedestrian areas. The luminaires use a high quality LED source with low energy consumption and long service life 50,000 - 80,000 hrs.

The Luminaire is rated as class I with the high power LED integral driver. Low copper content die-cast aluminum housing and frame. Stainless steel screws. Durable silicone rubber gasket and clear toughened glass. Single cable entry. Housing is treated with a chemical chromated protection before powder coating, ensuring high corrosion resistance. Anodized high purity aluminum reflector.

High power LED with three different beam distribution options in 3000K and 4000K, Consult factory for additional colors.

### Physical Data

Height: 8.6"

Diameter: 4"

Weight: 7.5 lbs

### Lamp

LED - 12W - 3000K - 638 Lm - CRI 80

For 12W - 4000K LED see product code U31762

For LED Cylinders with higher lumen outputs please consult the catalogue or contact the factory.

(For Different Lamp options please Consult the Catalogue, Website or Contact The Ligman Lighting Factory)

### Voltage (Please Specify)

120 - 277V

Other \_\_\_\_\_

### Color (Please Specify)

01-Black - RAL 9011       02- Dark Grey - RAL 7043

03-White - RAL 9003       04- Metallic Silver - RAL 9006

05-Matt Silver - RAL 9006       07- Custom - RAL \_\_\_\_\_

06-Bronze - RAL 6014

### Note

- Integral Electronic Driver IP 65.

### Beam Options

N- Narrow Beam - 19 Deg

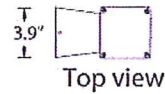
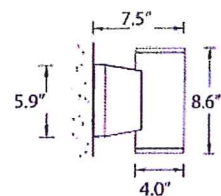
M- Medium Beam - 25 Deg

W- Wide Beam - 34 Deg

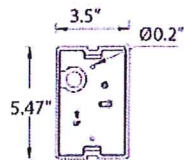
### Options

F- Frosted Lens

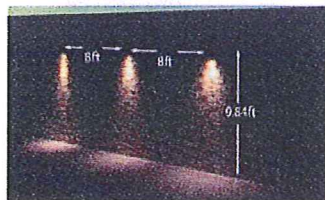
Hgt - Custom Height \_\_\_\_\_



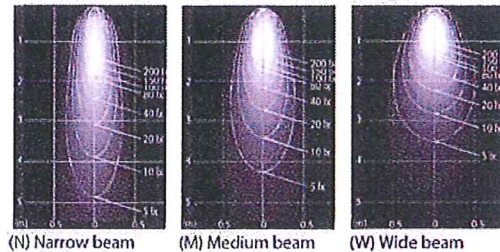
Bottom view



Mounting detail  
Mounts over a 3"  
Junction Box



NOTE:  
The Jet is also available in up down configurations  
See Product codes : U31751, U31752 Round  
: U31771, U31772 Square



(N) Narrow beam      (M) Medium beam      (W) Wide beam



Head Office:  
3302 NW 211th Terrace  
Hillsboro,  
Oregon  
97125  
USA

Tel: 503-645-0500  
Fax: 503-645-8100  
Email: info@ligmanlightingusa.com  
Website: www.ligmanlightingusa.com



Ligman Lighting USA reserves the right to change specifications without prior notice.

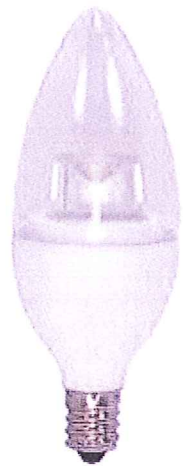


3CTC/LED /3000K /180L /120V /D  
 3 Watt; Candle; 3000K; Candelabra Base; 120 Volts

Features

- Solid State LED lighting
- Decorative replacement lamp
- Long life
- Dimmable

View [Dimmer Compatibility](#)



S8996

Item Number	UPC	Watts	Lamp Shape	Base	ANSI Base	Lamp Code	Voltage
S8996	045923089961	3	Candle	Candelabra	E12	3CTC/LED /3000K /180L /120V /D	120

Initial Lumens	Average Rated Hours	Kelvin Temp	CRI	Pack	Package Type
180	25000	3000	80	12	CD/1



National Toll-Free:  
 800.43.SATCO  
 (800.437.2826)  
 www.satco.com

Distribution Centers:  
 New York, Florida, Texas,  
 Washington, California,  
 Puerto Rico

Corporate Offices:  
 110 Heartland Blvd.,  
 Brentwood, NY 11717  
 800.437.2826 631.243.2022  
 Fax 631.243.2027

