



April 8, 2015

**Re: Urban Design Commission Final Review
Proposed Madison Area Branch Office
Ho-Chunk Nation
4724 Tradewinds Parkway**

Project Description

The Ho-Chunk Nation is proposing to build a new branch office in the City of Madison that will consolidate functions presently being offered in rented facilities across Dane County. Approximately 350 tribal members are served locally. The proposed building will be about 17,000 SF in size and will include the following functions:

- District administration offices
- Youth services (afterschool counseling, recreation, cultural identity)
- Tribal aging services (social functions, meals)
- Indoor recreation
- Social events (weddings, funerals, religious ceremonies, banquets)
- Outdoor ceremonies connected with the social events

Tradewinds Business Centre is located in Urban Design District #1 and was selected for its close proximity to the City's highway system as well as the Ho-Chunk gaming casino located at 4002 Evan Acres Road, along Interstate 90-39.



SOUTHWEST AERIAL VIEW

HO-CHUNK MADISON AREA BRANCH OFFICE

4/8/2015 714432-01

Bauer
Baether
Builders, Inc.

eua
epstein uhen : architects



SOUTH VIEW

HO-CHUNK MADISON AREA BRANCH OFFICE

4/8/2015 714432-01





EAST VIEW

HO-CHUNK MADISON AREA BRANCH OFFICE

4/8/2015 714432-01



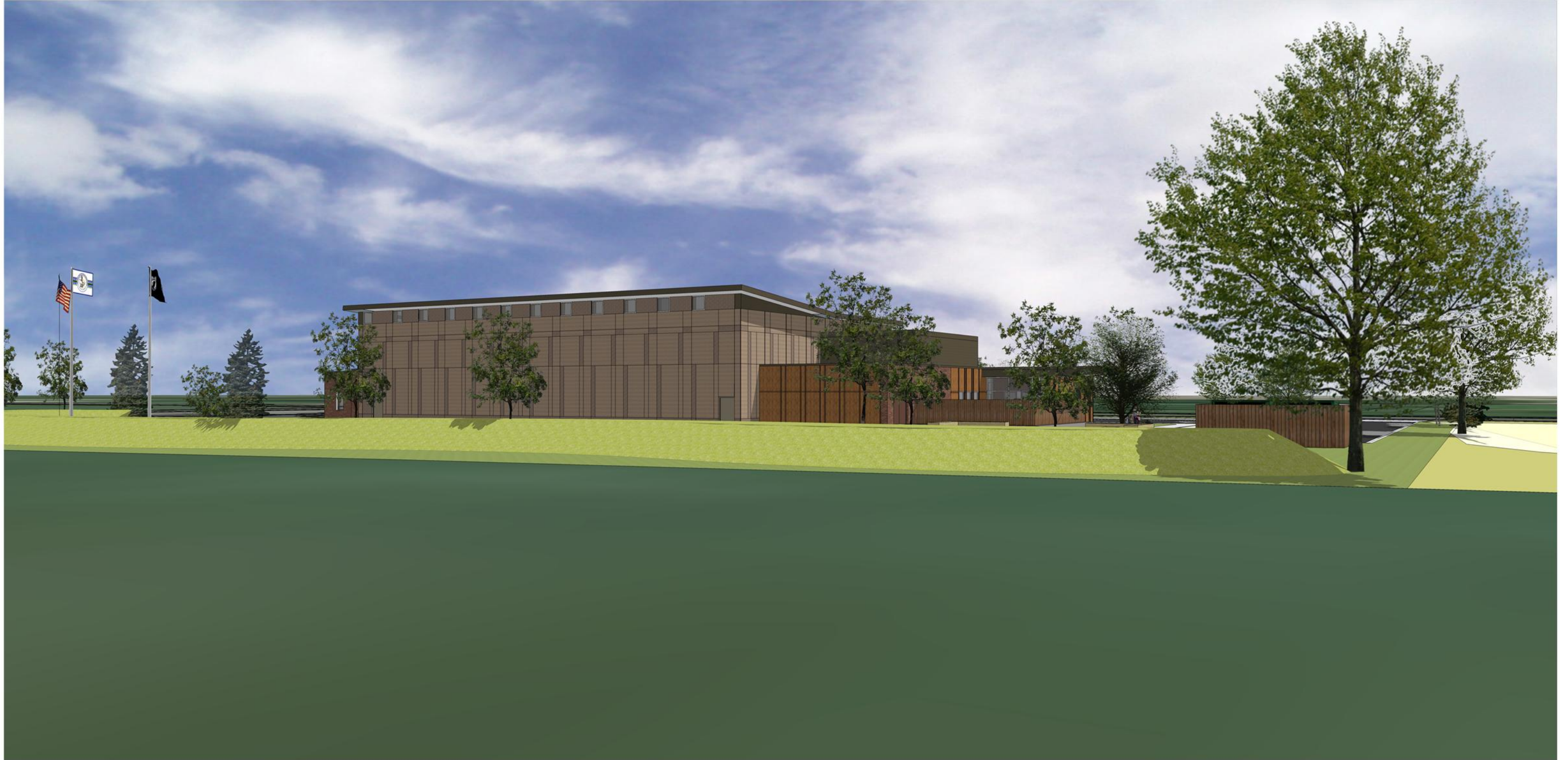


NORTHWEST VIEW

HO-CHUNK MADISON AREA BRANCH OFFICE

4/8/2015 714432-01





VIEW FROM BELTLINE

HO-CHUNK MADISON AREA BRANCH OFFICE

4/8/2015 714432-01

Bauer
aether
Rbuilders, Inc.

eua
epstein uhen : architects



NORHTEAST VIEW

HO-CHUNK MADISON AREA BRANCH OFFICE

4/8/2015 714432-01



epstein uhen : architects

milwaukee 333 East Chicago Street
Milwaukee, Wisconsin 53202
telephone 414.271.5350
madison 222 West Washington Ave, Suite 650
Madison, Wisconsin 53703
telephone 608.442.5350



PROJECT INFORMATION

HO-CHUNK BRANCH
OFFICE

4724 TRADEWINDS
PARKWAY
MADISON, WI 53718

ISSUANCE AND REVISIONS

URBAN DESIGN
COMMISSION
SUBMITTAL

#	DATE	DESCRIPTION

KEY PLAN

SHEET INFORMATION

PROGRESS DOCUMENTS

These documents reflect progress and intent and may be subject to change, including additional detail. These are not final construction documents and should not be used for final bidding or construction-related purposes.

PROJECT MANAGER

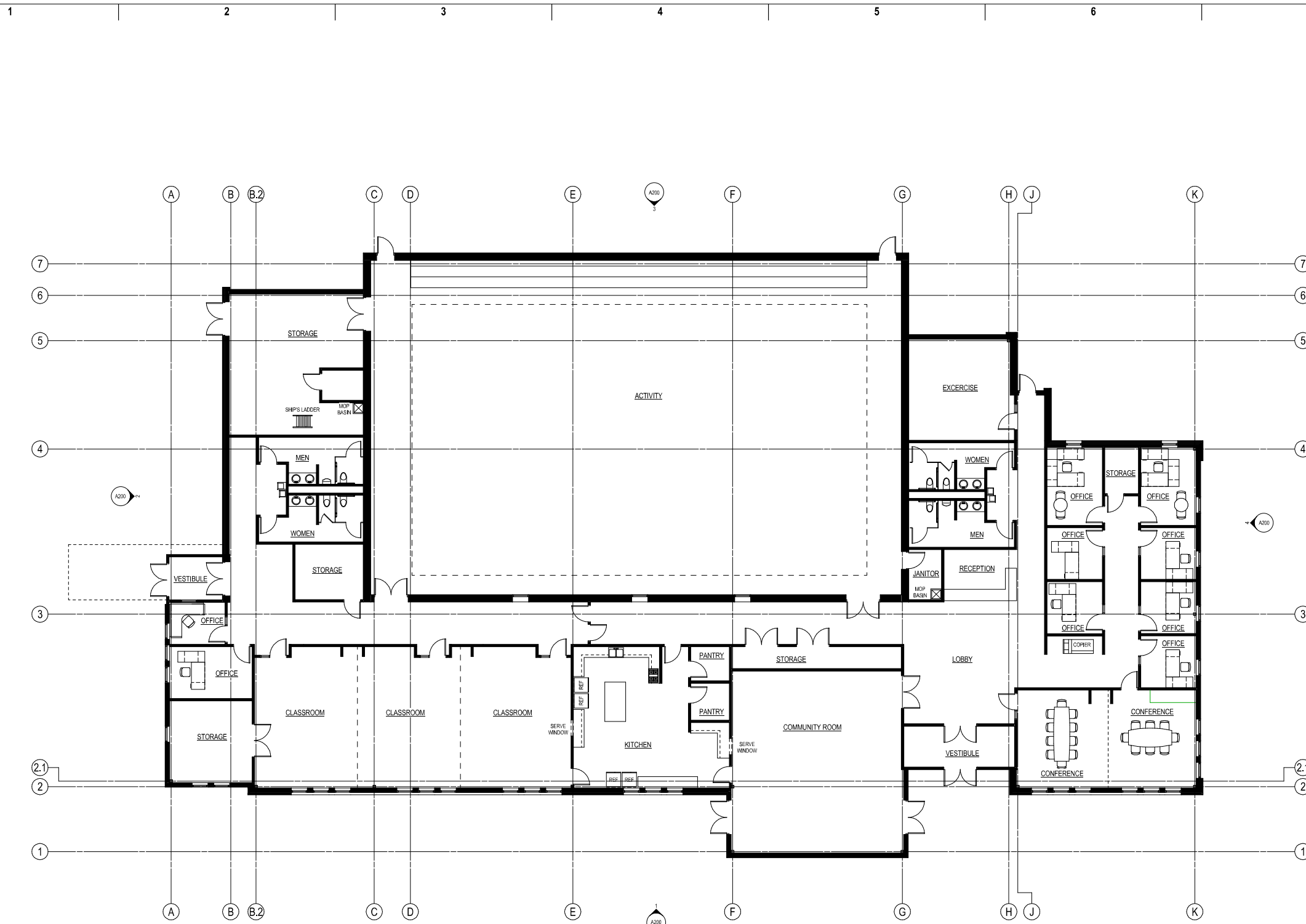
PROJECT NUMBER 714432-01

DATE 3.24.2015

FIRST FLOOR PLAN

A101

© Epstein Uhen Architects, Inc.



1 FIRST FLOOR PLAN
1/8" = 1'-0"

1 2 3 4 5 6 7



eppstein uhen : architects
 milwaukee 333 East Chicago Street
 Milwaukee, Wisconsin 53202
 telephone 414.271.5350
 madison 222 West Washington Ave, Suite 650
 Madison, Wisconsin 53703
 telephone 608.442.5350



PROJECT INFORMATION
 HO-CHUNK BRANCH
 OFFICE

4724 TRADEWINDS
 PARKWAY
 MADISON, WI 53718

ISSUANCE AND REVISIONS
 URBAN DESIGN
 COMMISSION
 SUBMITTAL

#	DATE	DESCRIPTION

KEY PLAN

SHEET INFORMATION

PROGRESS DOCUMENTS

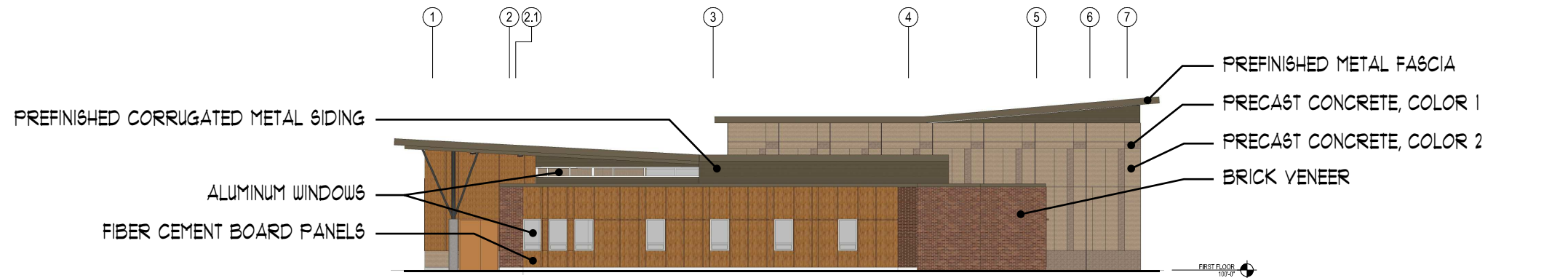
These documents reflect progress and intent and may be subject to change, including additional detail. These are not final construction documents and should not be used for final bidding or construction-related purposes.

PROJECT MANAGER	
PROJECT NUMBER	714432-01
DATE	3.24.2015

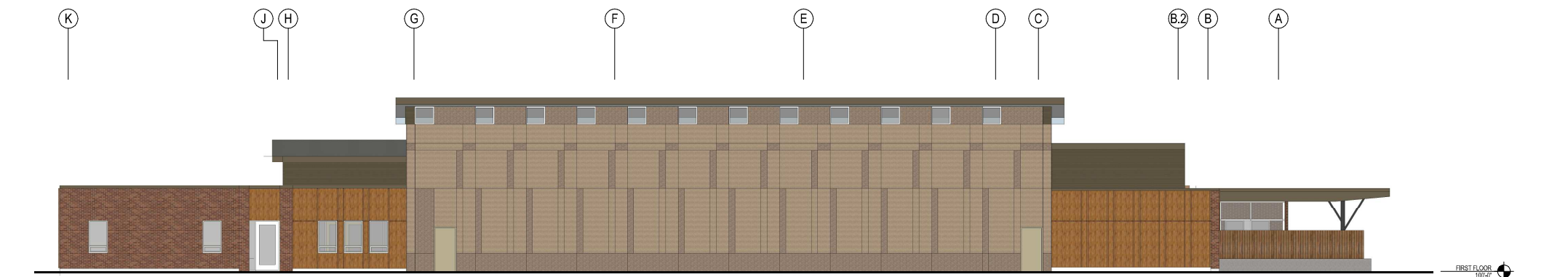
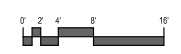
**EXTERIOR
 ELEVATIONS**

A200

© Eppstein Uhen Architects, Inc.



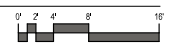
4 EAST ELEVATION
 1/8" = 1'-0"



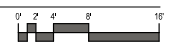
3 NORTH ELEVATION
 1/8" = 1'-0"



2 WEST ELEVATION
 1/8" = 1'-0"



1 SOUTH ELEVATION
 1/8" = 1'-0"



1 2 3 4 5 6 7

HO-CHUNK MADISON AREA BRANCH OFFICE

CITY OF MADISON, DANE COUNTY

URBAN DESIGN COMMISSION SUBMITTAL DRAWINGS

APRIL 2015

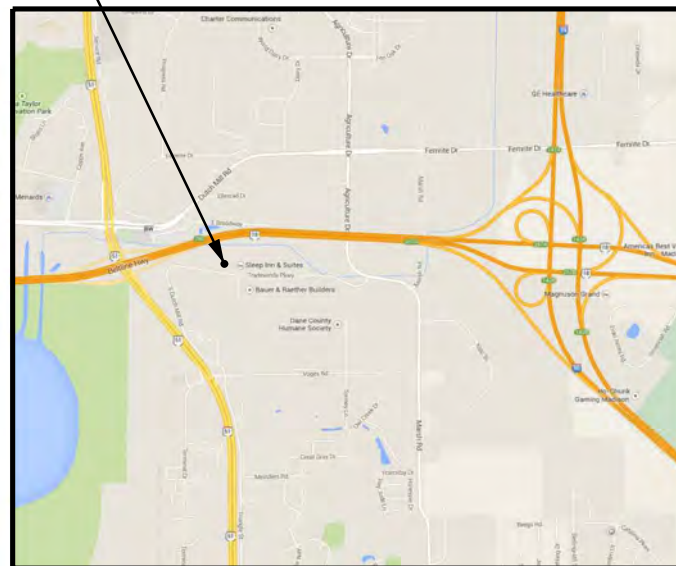


HO-CHUNK MADISON AREA BRANCH OFFICE
4724 TRADEWINDS PARKWAY
CITY OF MADISON, DANE COUNTY

TITLE SHEET



SITE LOCATION



SITE LOCATION MAP

SCALE: NTS

PROJECT DIRECTORY:

OWNER:
HO-CHUNK NATION
P.O. BOX 667
W9814 AIRPORT ROAD
BLACK RIVER FALLS, WI 54615
CONTACT: LUKE GEORGESON
PHONE: (715) 284-9343

ENGINEER:
EDGE CONSULTING ENGINEERS, INC.
624 WATER STREET
PRAIRIE DU SAC, WI 53578
CONTACT: BRIAN BEAULIEU
PHONE: (608) 644-1449 x 309

ARCHITECT:
EPPSTEIN UHEN ARCHITECTS
222 WEST WASHINGTON AVENUE
SUITE 650
MADISON, WI 53703
CONTACT: CLIFF GOODHART
PHONE: (608) 442-6684

GENERAL CONTRACTOR:
BAUER & RAETHER BUILDERS, INC.
4801 TRADEWINDS PARKWAY
MADISON, WI 53718
CONTACT: DENNIS BAUER
PHONE: (608) 222-8941

PROJECT INFO:

SITE LOCATION:
4724 TRADEWINDS PARKWAY
MADISON, WI 53718

PLSS LOCATION:
NE 1/4 OF THE NW 1/4,
SEC 27, T7N, R10E,
CITY OF MADISON,
DANE COUNTY,
WISCONSIN

ZONING:
EXISTING - IL (INDUSTRIAL LIMITED)
PROPOSED - IL (INDUSTRIAL LIMITED)

PARCEL NO.:
251/0710-272-0302-6

PROJECT AREAS:
TOTAL PROPERTY AREA - 2,289 ACRES - 99,698 SF
TOTAL DISTURBED AREA - 94,830 SF
EXISTING IMPERVIOUS AREA - 0 SF
ADDITIONAL IMPERVIOUS AREA - 45,078 SF
TOTAL IMPERVIOUS AREA - 45,078 SF (45.2%)
TOTAL PERVIOUS AREA - 54,620 SF (54.8%)

SHEET INDEX:

NO.: **PAGE TITLE**

G-001	TITLE SHEET
C-101	SITE PLAN
C-102	UTILITY PLAN
C-103	GRADING & EROSION CONTROL PLAN
C-501	SITE DETAILS
C-502	SITE DETAILS
C-503	SITE DETAILS
C-504	SITE DETAILS
C-505	SITE DETAILS
L-100	LANDSCAPING PLAN
L-101	LANDSCAPING DETAILS

REVISIONS:

MARK	DATE	DESCRIPTION

ISSUE DATE:

04/08/2015

SET TYPE:

PR

GRAPHIC SCALE:

2,000' / In.

DRAWN BY:

NED, BJB

CHECKED BY:

BJB

PLOT DATE:

4/7/2015

PROJECT NUMBER:

11774

FILE NAME:

G-001.dgn

SHEET IDENTIFICATION:

G-001

MEMBER
ONE CALL SYSTEMS INTERNATIONAL

TO OBTAIN LOCATION OF PARTICIPANTS' UNDERGROUND FACILITIES BEFORE YOU DIG IN WISCONSIN

CALL DIGGERS HOTLINE
1-800-242-8511
TOLL FREE

FAX A LOCATE 1-800-338-3860
TDD(FOR HEARING IMPAIRED) 1-800-542-2289

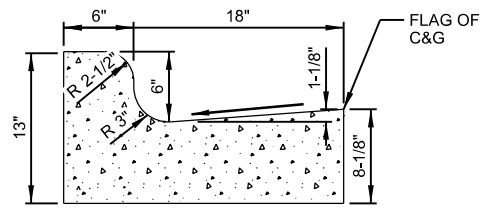
WIS. STATUTE 182.0175 (1974)
REQUIRES MIN. OF 3 WORK DAYS
NOTICE BEFORE YOU EXCAVATE.

ENGINEER SEAL:

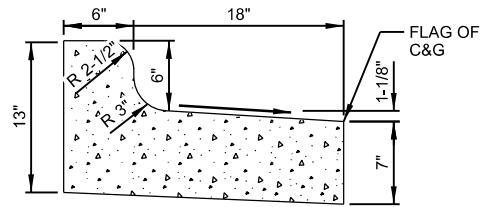
I HEREBY CERTIFY THAT THIS PLAN SET WAS PREPARED BY ME OR UNDER MY DIRECT SUPERVISION AND THAT I AM A DULY LICENSED PROFESSIONAL ENGINEER UNDER THE LAWS OF THE STATE OF WISCONSIN.

SIGNATURE: _____

DATE: _____



STANDARD 24" CONCRETE CURB

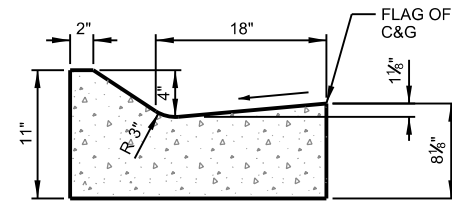


REJECT 24" CONCRETE CURB

GENERAL NOTES:

1. LATERAL CONTRACTION JOINTS SHALL BE PLACED AT INTERVALS OF NOT MORE THAN 15' NOR LESS THAN 6' IN LENGTH. THE JOINTS SHALL BE A MINIMUM OF 3" IN DEPTH.
2. EXPANSION JOINTS SHALL BE PLACED TRANSVERSELY AT RADIUS POINTS ON CURVES OF 200' OF LESS, AND AT ANGLE POINTS, OR AS DIRECTLY BY THE ENGINEER. THE EXPANSION JOINT SHALL BE A ONE PIECE ASPHALTIC MATERIAL HAVING THE SAME DIMENSIONS AS CURB & GUTTER AT THAT STATION AND BE 1/2" THICK.
3. IN ALL CASES, CONCRETE CURB & GUTTER SHALL BE PLACED ON 6" OF THOROUGHLY COMPACTED CRUSHED STONE.
4. HAND TOOL ALL JOINTS.
5. MEDIUM BROOM FINISH.
6. SEE SITE AND GRADING PLANS FOR LOCATION OF STANDARD VS. REJECT CURB

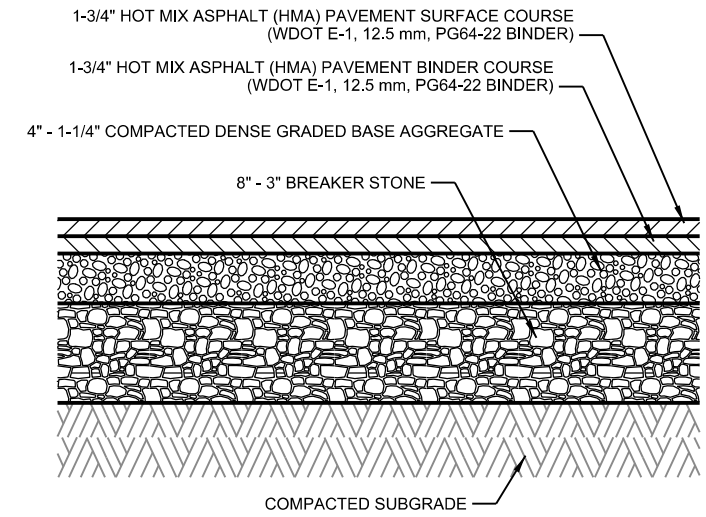
A TYP. 24" CURB & GUTTER DETAIL
SCALE: NTS



NOTES:

1. LATERAL CONTRACTION JOINTS SHALL BE PLACED AT INTERVALS OF NOT MORE THAN 15' NOR LESS THAN 6' IN LENGTH. THE JOINTS SHALL BE A MINIMUM OF 3" IN DEPTH.
2. EXPANSION JOINTS SHALL BE PLACED TRANSVERSELY AT RADIUS POINTS ON CURVES OF 200' OF LESS, AND AT ANGLE POINTS, OR AS DIRECTLY BY THE ENGINEER. THE EXPANSION JOINT SHALL BE A ONE PIECE ASPHALTIC MATERIAL HAVING THE SAME DIMENSIONS AS CURB & GUTTER AT THAT STATION AND BE 1/2" THICK.
3. IN ALL CASES, CONCRETE CURB & GUTTER SHALL BE PLACED ON 6" OF THOROUGHLY COMPACTED CRUSHED STONE.
4. HAND TOOL ALL JOINTS.
5. MEDIUM BROOM FINISH.

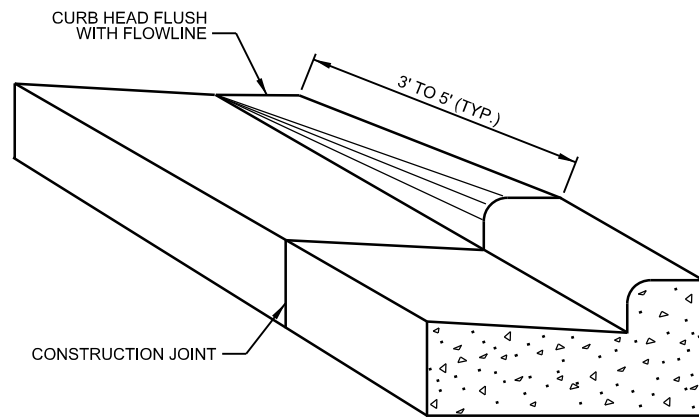
B 24" MOUNTABLE CONCRETE CURB & GUTTER
SCALE: NTS



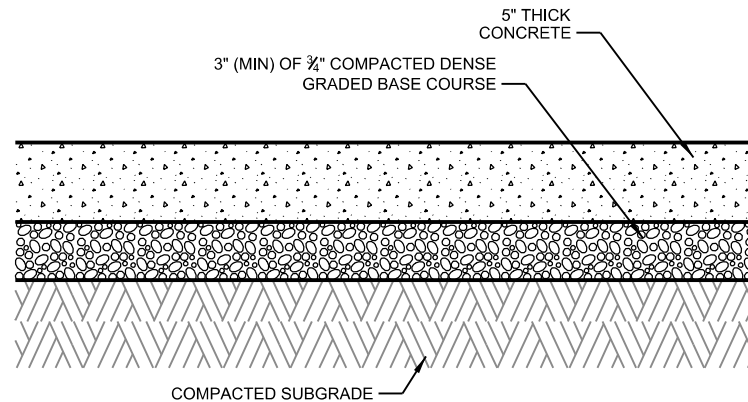
NOTES:

1. APPLY TACK COAT BETWEEN LAYERS

C ASPHALT PAVEMENT SECTION
SCALE: NTS



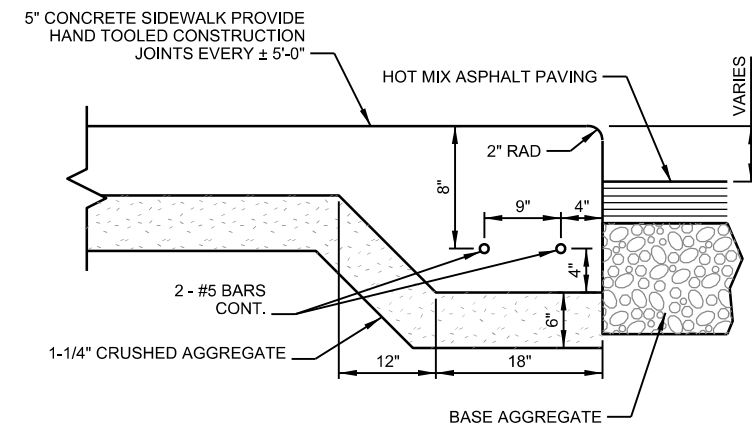
D CURB AND GUTTER TAPER DETAIL
SCALE: NTS



NOTES:

1. CONCRETE TO BE 4,000 PSI @ 28 DAYS
2. AIR ENTRAINED TO BE 6% AIR CONTENT MIN.
3. APPLY 2 COATS OF HIGH SOLIDS CURING COMPOUND (ASTM C309)
4. JOINT SPACING TO BE 12' MAX & RECTANGULAR IN SHAPE (NO SHARP ANGLES)
5. JOINT DEPTH SHALL BE 1/4" DEEP PER INCH OF PAVEMENT THICKNESS
6. DO NOT SEAL JOINTS
7. MEDIUM BROOM FINISH

E CONCRETE SIDEWALK SECTION
SCALE: NTS

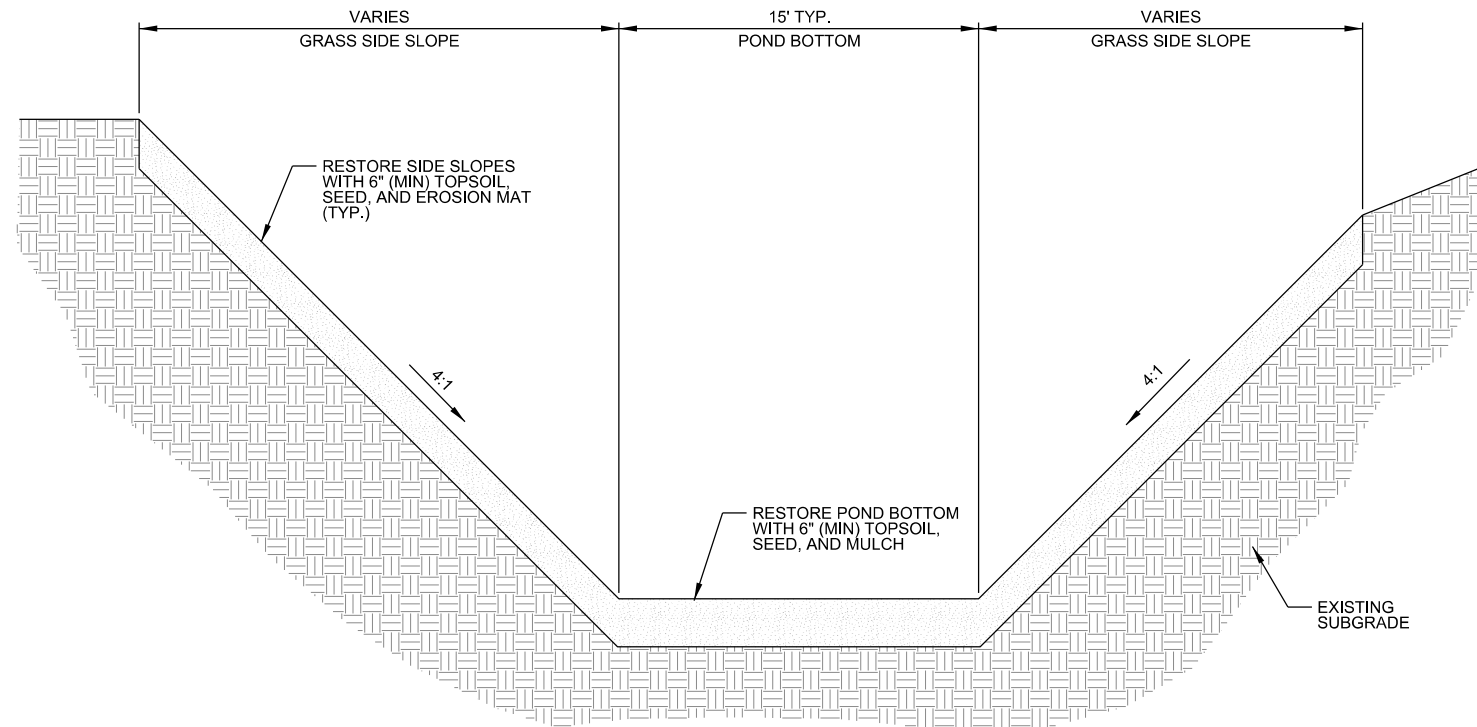


F THICKENED EDGE SIDEWALK
SCALE: NTS

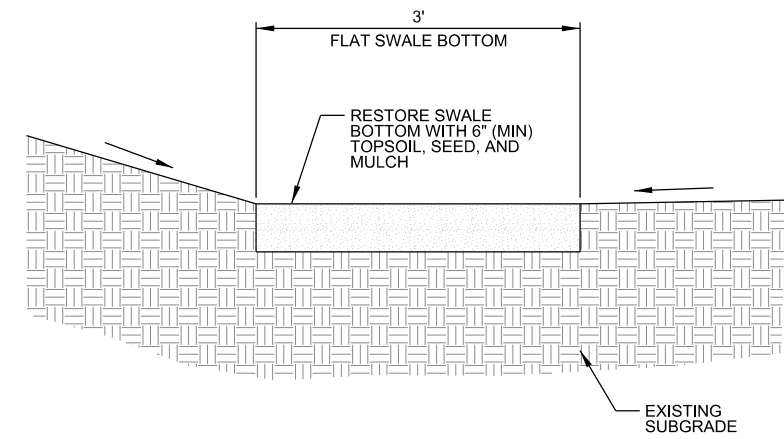
REVISIONS:	DESCRIPTION:
MARK:	DATE:

ISSUE DATE:	04/08/2015
SET TYPE:	PR
GRAPHIC SCALE:	2,000' / In.
DRAWN BY:	NED, BJB
CHECKED BY:	BJB
PLOT DATE:	4/7/2015
PROJECT NUMBER:	11774
FILE NAME:	C-501.dgn

NOTES
1. SEE GRADING PLAN FOR FINISH GROUND ELEVATIONS.

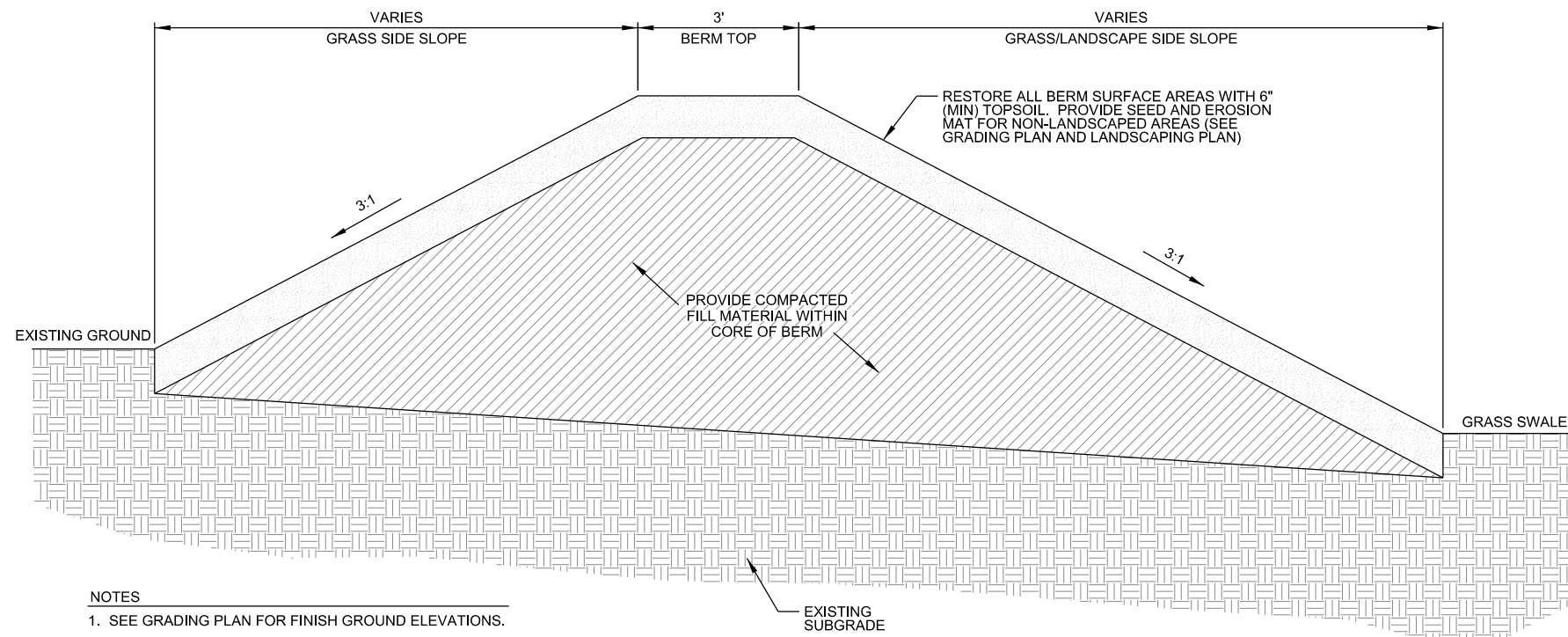


A DETENTION BASIN CROSS SECTION DETAIL
SCALE: NTS



NOTES
1. SEE GRADING PLAN FOR FINISH GROUND ELEVATIONS.

B GRASS SWALE CROSS SECTION DETAIL
SCALE: NTS



NOTES
1. SEE GRADING PLAN FOR FINISH GROUND ELEVATIONS.

C NOISE ABATEMENT BERM CROSS SECTION DETAIL
SCALE: NTS

THIS AREA INTENTIONALLY LEFT BLANK

REVISIONS:	DESCRIPTION:
MARK:	DATE:

ISSUE DATE:	04/08/2015
SET TYPE:	PR
GRAPHIC SCALE:	2,000' / In.
DRAWN BY:	NED, BJB
CHECKED BY:	BJB
PLOT DATE:	4/7/2015
PROJECT NUMBER:	11774
FILE NAME:	C-504.dgn

Ho-Chunk

Madison, Wisconsin
Plant List - 04/02/2015

Deciduous Trees

Symbol	Quantity	Scientific Name	Common Name	Height	Spread	Size	Points Each	Total Points
AR	4	Acer rubrum	Red Maple	40-70'	30-50'	2" BB	35	140
AH	2	Aesculus hippocastanum	Chestnut	50-75'	40-65'	2" BB	35	70
CC	4	Carpinus caroliniana	Musclewood	20-35'	20-35'	2" BB	35	140
CH	2	Crataegus crusgalli var. inermis	Thornless Cockspur Hawthorn	25-35'	25-35'	2" BB	35	70
CM	2	Crataegus mollis	Downy Hawthorn	25-35'	25-35'	2" BB	35	70
QA	2	Quercus alba	White Oak	80-100'	50-80'	2.5" BB	35	70
QM	1	Quercus macrocarpa	Bur Oak	60-80'	60-80'	2.5" BB	35	35
QR	2	Quercus rubra	Red Oak	50-75'	50-75'	2.5" BB	35	70
TA	3	Tilia americana	Basswood	50-80'	30-50'	2" BB	35	105
							Total Points	490

Evergreen

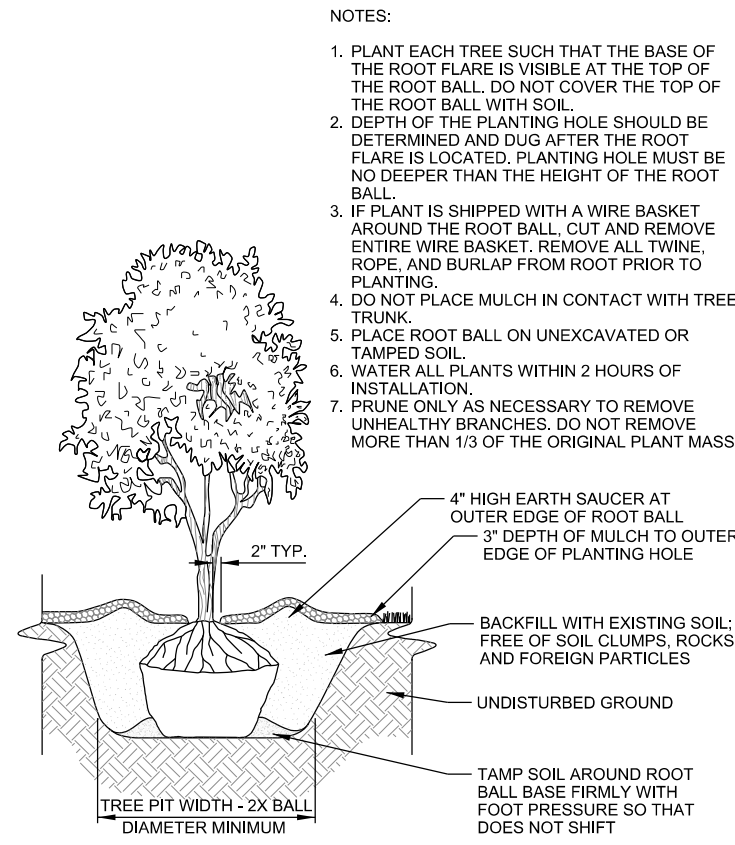
Symbol	Quantity	Scientific Name	Common Name	Height	Spread	Size	Points Each	Total Points
JV	7	Juniperus virginiana	Red Cedar	30-65'	8-25'	6'	35	245
JH	14	Juniperus horizontalis	Creeping Juniper	1'	6-8'	1 gal.	2	28
							Total Points	273

Shrubs

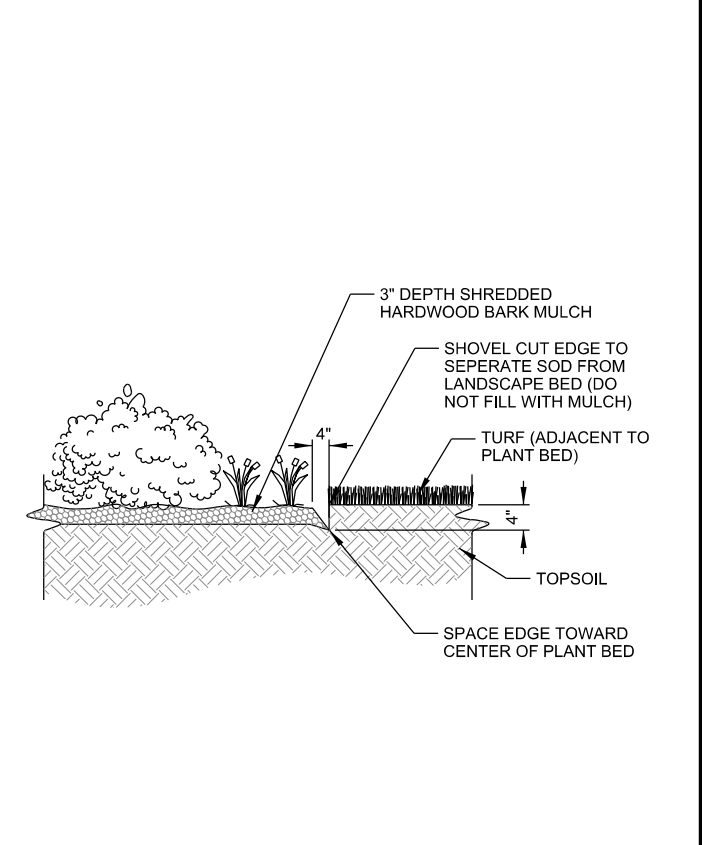
Symbol	Quantity	Scientific Name	Common Name	Height	Spread	Size	Points Each	Total Points
AC	1	Amelanchier canadensis	Shadblow Serviceberry	25-30'	15-20'	1-1/2" BB	15	15
AL	3	Amelanchier laevis	Alleghany Serviceberry	25'	15'	1-1/2" BB	15	45
AM	12	Arnoia melanocarpa	Black Chokeberry	3-6'	3-6'	1-1/2" BB	15	180
CR	3	Cornus racemosa	Gray Dogwood	10-15'	10-15'	1-1/2" BB	15	45
CS	6	Cornus stolonifera	Redosier Dogwood	10'	10'	1-1/2" BB	15	90
EA	3	Euonymus Alatus	Burning Bush	8'	8'	3 gal.	3	9
MI	3	Malus ioensis	Prairie Crabapple	10-25'	20'	1-1/2" BB	15	45
RT	4	Rhus typhina	Staghorn Sumac	15-25'	20-30'	1-1/2" BB	15	60
VD	4	Viburnum dentatum	Arrowhead Viburnum	6-10'	6-10'	3 gal.	3	12
VP	11	Viburnum prunifolium	Blackhawk Viburnum	12-15'	6-12'	3 gal.	3	33
							Total Points	501

Perennials

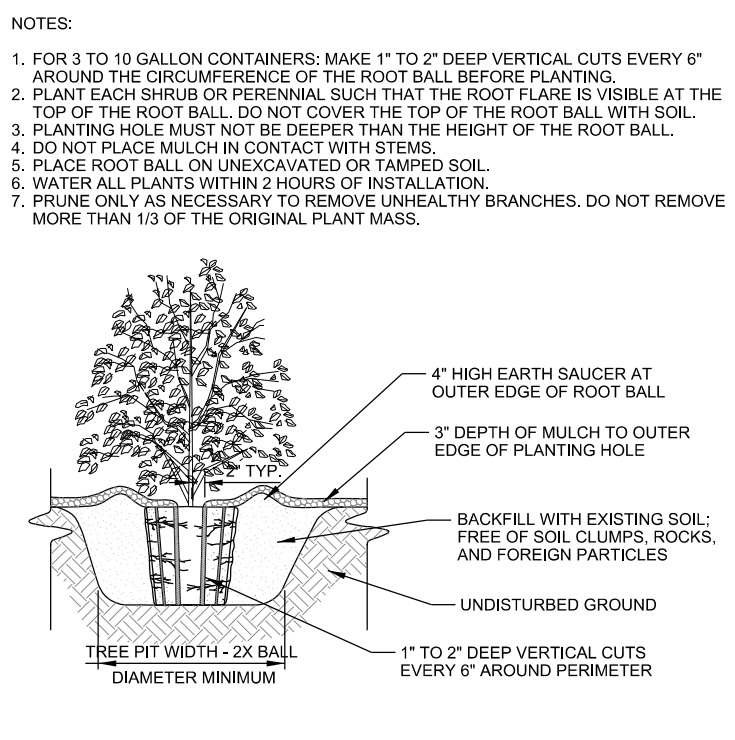
Symbol	Quantity	Scientific Name	Common Name	Height	Spread	Size	Points Each	Total Points
AA	25	Aster azureus	Sky Blue Aster	3'	2'	1 gal.	2	50
AS	27	Acorus calamus	Sweet Flag	2-3'	2'	1 gal.	2	54
AT	10	Asclepias tuberosa	Butterflyweed	2'	1.5'	1 gal.	2	20
CK	29	Calamagrostis x acutiflora 'Karl Foerster'	Karl Foerster Grass	3-5'	1-3'	1 gal.	2	58
EM	16	Eupatorium maculatum	Spotted Joe-Pye Weed	4-7'	2-4'	1 gal.	2	32
EP	30	Echinacea pallida	Pale Purple Coneflower	2-3'	2'	1 gal.	2	60
HP	68	Hystrix patula	Bottlebrush Grass	2-3'	2'	1 gal.	2	136
RH	37	Rudbeckia hirta	Black-eyed Susan	2'	2'	1 gal.	2	74
RP	10	Ratibida pinnata	Yellow Coneflower	3-7'	2'	1 gal.	2	20
SH	122	Sporobolus heterolepis	Prairie Dropseed Grass	2-3'	2-3'	1 gal.	2	244
							Total Points	484



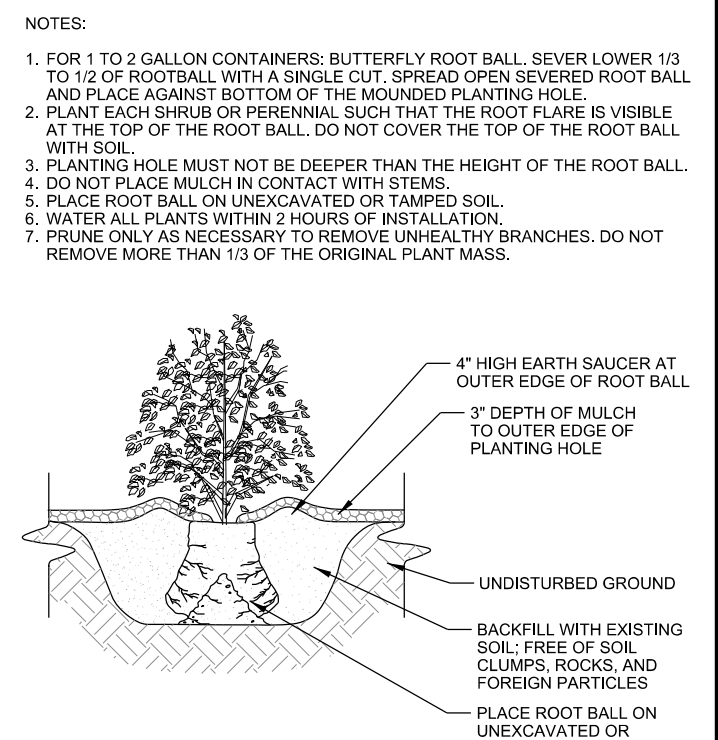
A BALL & BURLAP TREE PLANTING DETAIL
L-101 SCALE: NTS



B PLANTING BED EDGE DETAIL
L-101 SCALE: NTS



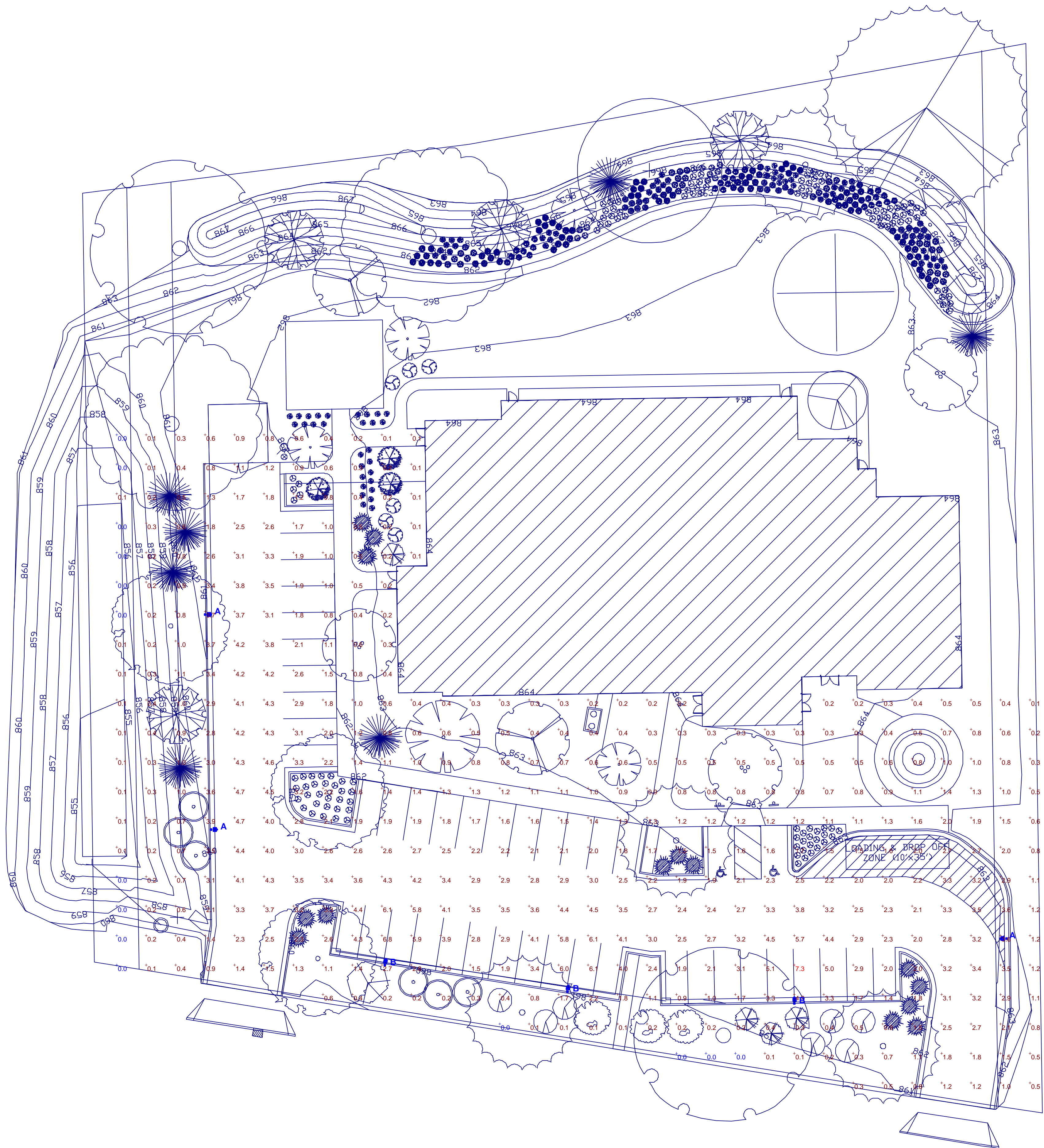
C LARGE CONTAINER PLANTING DETAIL
L-101 SCALE: NTS



D SMALL CONTAINER PLANTING DETAIL
L-101 SCALE: NTS

REVISIONS:	DESCRIPTION:
MARK:	DATE:

ISSUE DATE: 04/08/2015
SET TYPE: PR
GRAPHIC SCALE: 2,000' / In.
DRAWN BY: NED, BJB
CHECKED BY: BJB
PLOT DATE: 4/7/2015
PROJECT NUMBER: 11774
FILE NAME: L-101.dgn



Plan View
Scale 1" = 20'

LUMINAIRE SCHEDULE							
Symbol	Label	Qty	Catalog Number	Description	Lamp	File	Lumens LLF Watts
■	A	3	ALED2T150 / 25'	CAST FINNED METAL HOUSING, 6 CIRCUIT BOARDS EACH WITH 1 LED, MOLDED 2-PIECE PLASTIC REFLECTOR WITH SPECULAR FINISH AND 1 APERTURE PER LENS FRAME.	SIX WHITE MULTI-CHIP LIGHT EMITTING DIODES (LEDS), TILTED 57-DEGREES FROM VERTICAL BASE-UP POSITION.	ALED2T150.le	Absolute 1.00 153.7
■	B	3	ALED4T150 / 25'	CAST FINNED METAL HOUSING, 6 CIRCUIT BOARDS EACH WITH 1 LED, MOLDED 2-PIECE PLASTIC REFLECTOR WITH SPECULAR FINISH AND 1 APERTURE PER LENS FRAME.	SIX WHITE MULTI-CHIP LIGHT EMITTING DIODES (LEDS), 2 LEDS TILTED 56-DEGREES FROM VERTICAL BASE-UP POSITION AND CANTED 18-DEGREES FROM STRAIGHT AHEAD, 2 LEDS TILTED 57-DEGREES FROM VERTICAL BASE-UP POSITION AND CANTED 16-DEGREES FROM STRAIGHT AHEAD, 2 LEDS TILTED 57-DEGREES FROM VERTICAL BASE-UP POSITION AND CANTED 22-DEGREES FROM STRAIGHT AHEAD.	ALED4T150.le	Absolute 1.00 155.7

STATISTICS						
Description	Symbol	Avg	Max	Min	Max/Min	Avg/Min
Parking Lot	+	1.7 fc	7.3 fc	0.0 fc	N / A	N / A

Designer
Jeff Laufenberg

Date
Apr 7 2015

Scale

Drawing No.



Specification grade area lights available in IES Type II distributions. For use in parking lots, roadways, pathways and general area lighting. Replaces up to 400W metal halide. Patent pending thermal management system. 5 Year Warranty.

Color: Bronze

Weight: 32.0 lbs

Project:

Type:

Prepared By:

Date:

Driver Info

Type: Constant Current
 120V: 1.31A
 208V: 0.80A
 240V: 0.69A
 277V: 0.60A
 Input Watts: 154W
 Efficiency: 97%

LED Info

Watts: 150W
 Color Temp: 5000K (Cool)
 Color Accuracy: 65 CRI
 L70 Lifespan: 100,000
 Lumens: 14,038
 Efficacy: 91 LPW

Technical Specifications

Listings

UL Listing:

Suitable for wet locations.

IESNA LM-79 & LM-80 Testing:

RAB LED luminaires have been tested by an independent laboratory in accordance with IESNA LM-79 and LM-80, and have been received the Department of Energy "Lighting Facts" label.

DLC Listed:

This product is on the Design Lights Consortium (DLC) Qualified Products List and is eligible for rebates from DLC Member Utilities.

Dark Sky Approved:

The International Dark Sky Association has approved this product as a full cutoff, fully shielded luminaire.

LED Characteristics

Lifespan:

100,000-hour LED lifespan based on IES LM-80 results and TM-21 calculations.

LEDs:

Multi-chip, high-output, long-life LEDs

Color Consistency:

7-step MacAdam Ellipse binning to achieve consistent fixture-to-fixture color.

Color Stability:

LED color temperature is warranted to shift no more than 200K in CCT over a 5 year period.

Color Uniformity:

RAB's range of CCT (Correlated Color Temperature) follows the guidelines of the American National Standard for Specifications for the Chromaticity of Solid State Lighting (SSL) Products, ANSI C78.377-2011.

Construction

IES Classification:

The Type II distribution is ideal for wide walkways, on ramps and entrance roadways, bike paths and other long and narrow lighting applications. This type is meant for lighting larger areas and usually is located near the roadside. This type of lighting is commonly found on smaller side streets or jogging paths.

Effective Projected Area:

EPA = 0.75

Ambient Temperature:

Suitable for use in 40°C (104°F) ambient temperatures.

Cold Weather Starting:

The minimum starting temperature is -40°F/-40°C.

Thermal Management:

Superior thermal management with external Air-Flow fins.

Housing:

Die-cast aluminum housing, lens frame and mounting arm.

Mounting:

Heavy-duty mounting arm with "O" ring seal & stainless steel screws

Reflector:

Specular vacuum-metallized polycarbonate

Gaskets:

High-temperature silicone gaskets

Finish:

Our environmentally friendly polyester powder coatings are formulated for high-durability and long-lasting color, and contains no VOC or toxic heavy metals.

Green Technology:

Mercury and UV free, and RoHS compliant. Polyester powder coat finish formulated without the use of VOC or toxic heavy metals.

For use on LEED Buildings:

IDA Dark Sky Approval means that this fixture can be used to achieve LEED Credits for Light Pollution Reduction.

Electrical

Drivers:

Two Drivers, Constant Current, Class 2, 2000mA, 100-277V, 50-60Hz, 1.1A, Power Factor 99%

THD:

6.6% at 120V, 12.1% at 277V

Surge Protection:

4kV

Optical

Replacement:

The ALED150 replaces 400W Metal Halide Area Lights.

Other

California Title 24:

See ALED2T150/D10, ALED2T150/BL, ALED2T150/PCS, ALED2T150/PCS2, or ALED2T150/PCT for a 2013 California Title 24 compliant product. Any additional component requirements will be listed in the Title 24 section under technical specifications on the product page.

Technical Specifications (continued)

Other

Warranty:

RAB warrants that our LED products will be free from defects in materials and workmanship for a period of five (5) years from the date of delivery to the end user, including coverage of light output, color stability, driver performance and fixture finish.

Country of Origin:

Designed by RAB in New Jersey and assembled in the USA by RAB's IBEW Local 3 workers.

Buy American Act Compliant:

This product is a COTS item manufactured in the United States, and is compliant with the Buy American Act.

Recovery Act (ARRA) Compliant:

This product complies with the 52.225-21 "Required Use of American Iron, Steel, and Manufactured Goods-- Buy American Act-- Construction Materials (October 2010).

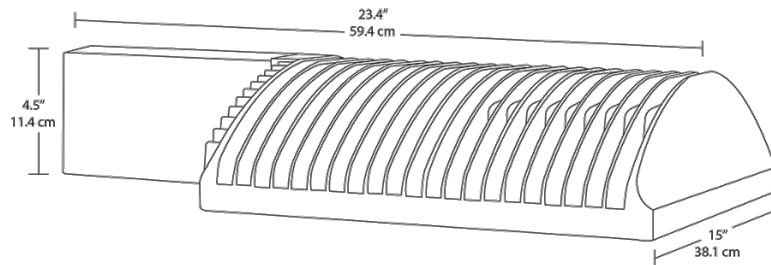
Trade Agreements Act Compliant:

This product is a COTS item manufactured in the United States, and is compliant with the Trade Agreements Act.

GSA Schedule:

Suitable in accordance with FAR Subpart 25.4.

Dimensions



Features

- 66% energy cost savings vs. HID
- 100,000-hour LED lifespan
- Type II distribution
- 5-year warranty

Ordering Matrix

Family	Distribution	Watts	Mount	Color Temp	Finish	Voltage	Photocell	Dimming	Bi-Level
ALED									
	2T = Type II	150 =	Blank = Arm	Blank =	Blank =	Blank = 120-	Blank = No Photocell	Blank = No	Blank = No B i-
	3T = Type III	150W	SF =	Cool	Bronze	277V	/PC = 120V Button	Dimming	Level
	4T = Type IV	125 =	Slipfitter	Y = Warm	W = White	/480 = 480V	/PC2 = 277V Button	/D10 = Dimmable	/BL = Bi-Level
		125W		N = Neutral	RG = Gray		/PCS = 120V Swivel		
		105 =					/PCS2 = 277V Swivel		
		105W					/PCT = 120-277V Twistlock		
							/PCS4 = 480V Swivel		
							/PCT4 = 480V Twistlock		



Specification grade area lights available in IES Type IV distributions. Suited for mounting on the sides of buildings and walls, and for illuminating the perimeter of parking areas. Replaces up to 400W metal halide. Patent pending management system. 5 Year Warranty.

Color: Bronze

Weight: 32.0 lbs

Project:

Type:

Prepared By:

Date:

Driver Info

Type: Constant Current
 120V: 1.31A
 208V: 0.80A
 240V: 0.69A
 277V: 0.60A
 Input Watts: 156W
 Efficiency: 96%

LED Info

Watts: 150W
 Color Temp: 5000K (Cool)
 Color Accuracy: 65 CRI
 L70 Lifespan: 100,000
 Lumens: 14,349
 Efficacy: 92 LPW

Technical Specifications

Listings

UL Listing:

Suitable for wet locations.

IESNA LM-79 & LM-80 Testing:

RAB LED luminaires have been tested by an independent laboratory in accordance with IESNA LM-79 and LM-80, and have been received the Department of Energy "Lighting Facts" label.

DLC Listed:

This product is on the Design Lights Consortium (DLC) Qualified Products List and is eligible for rebates from DLC Member Utilities.

Dark Sky Approved:

The International Dark Sky Association has approved this product as a full cutoff, fully shielded luminaire.

LED Characteristics

Lifespan:

100,000-hour LED lifespan based on IES LM-80 results and TM-21 calculations.

LEDs:

Multi-chip, high-output, long-life LEDs

Color Consistency:

7-step MacAdam Ellipse binning to achieve consistent fixture-to-fixture color.

Color Stability:

LED color temperature is warranted to shift no more than 200K in CCT over a 5 year period.

Color Uniformity:

RAB's range of CCT (Correlated Color Temperature) follows the guidelines of the American National Standard for Specifications for the Chromaticity of Solid State Lighting (SSL) Products, ANSI C78.377-2011.

Construction

IES Classification:

The Type IV distribution (also known as a Forward Throw) is especially suited for mounting on the sides of buildings and walls, and for illuminating the perimeter of parking areas. It produces a semiCircular distribution with essentially the same candlepower at lateral angles from 90° to 270°.

Effective Projected Area:

EPA = 0.75

Ambient Temperature:

Suitable for use in 40°C (104°F) ambient temperatures.

Cold Weather Starting:

The minimum starting temperature is -40°F/-40°C.

Thermal Management:

Superior thermal management with external Air-Flow fins.

Housing:

Die-cast aluminum housing, lens frame and mounting arm.

Mounting:

Heavy-duty mounting arm with "O" ring seal & stainless steel screws

Reflector:

Specular vacuum-metallized polycarbonate

Gaskets:

High-temperature silicone gaskets

Finish:

Our environmentally friendly polyester powder coatings are formulated for high-durability and long-lasting color, and contains no VOC or toxic heavy metals.

Green Technology:

Mercury and UV free, and RoHS compliant. Polyester powder coat finish formulated without the use of VOC or toxic heavy metals.

For use on LEED Buildings:

IDA Dark Sky Approval means that this fixture can be used to achieve LEED Credits for Light Pollution Reduction.

Electrical

Drivers:

Two Drivers, Constant Current, Class 2, 2000mA, 100-277V, 50-60Hz, 1.1A, Power Factor 99%

THD:

4.7% at 120V, 13.3% at 277V

Surge Protection:

4kV

Optical

Replacement:

The ALED150 replaces 400W Metal Halide Area Lights.

Other

California Title 24:

See ALED4T150/D10, ALED4T150/BL, ALED4T150/PCS, ALED4T150/PCS2, or ALED4T150/PCT for a 2013 California Title 24 compliant product. Any additional component requirements will be listed in the Title 24 section under technical specifications on the product page.

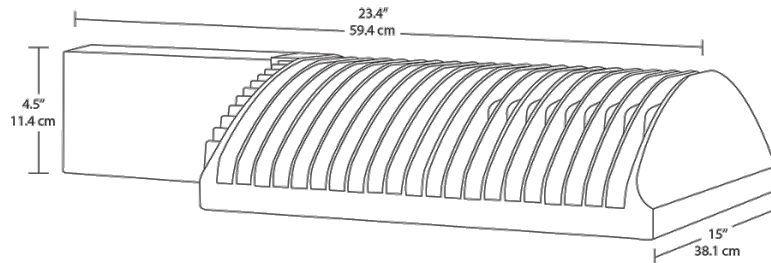
Technical Specifications (continued)

Other

Warranty:

RAB warrants that our LED products will be free from defects in materials and workmanship for a period of five (5) years from the date of delivery to the end user, including coverage of light output, color stability, driver performance and fixture finish.

Dimensions



Features

- 66% energy cost savings vs. HID
- 100,000-hour LED lifespan
- Type IV distribution
- 5-year warranty

Ordering Matrix

Family	Distribution	Watts	Mount	Color Temp	Finish	Voltage	Photocell	Dimming	Bi-Level
ALED									
	2T = Type II	150 =	Blank = Arm	Blank =	Blank =	Blank = 120-	Blank = No Photocell	Blank = No	Blank = No B i-
	3T = Type III	150W	SF =	Cool	Bronze	277V	/PC = 120V Button	Dimming	Level
	4T = Type IV	125 =	Slipfitter	Y = Warm	W = White	/480 = 480V	/PC2 = 277V Button	/D10 = Dimmable	/BL = Bi-Level
		125W		N = Neutral	RG = Gray		/PCS = 120V Swivel		
		105 =					/PCS2 = 277V Swivel		
		105W					/PCT = 120-277V Twistlock		
							/PCS4 = 480V Swivel		
							/PCT4 = 480V Twistlock		



Square steel poles drilled for 2 Area Lights at 180°. Designed for ground mounting. Poles are stocked nationwide for quick shipment. Protective packaging ensures poles arrive at the job site good as new.

Color: Bronze

Weight: 168.0 lbs

Project:	Type:
Prepared By:	Date:

Lamp Info		Ballast Info	
Type:	N/A	Type:	N/A
Watts:	0W	120V:	N/A
Shape/Size:	N/A	208V:	N/A
Base:	N/A	240V:	N/A
ANSI:	N/A	277V:	N/A
Hours:	N/A	Input Watts:	N/A
Lamp Lumens:	N/A		
Efficacy:	N/A		

Technical Specifications

Listings

CSA Listed:

Suitable for wet locations.

Construction

Shaft:

46,000 p.s.i. minimum yield.

Hand Holes:

Reinforced with grounding lug and removable cover.

Base Plates:

36,000 p.s.i. minimum yield.

Shipping Protection:

All poles are shipped in individual corrugated cartons to prevent finish damage.

Color:

Bronze powder coating.

Height:

25 FT.

Weight:

168 lbs.

Gauge:

11

Wall Thickness:

1/8".

Shaft Size:

4".

Hand Hole Dimensions:

3" x 5".

Bolt Circle:

8 1/2".

Base Dimension:

8".

Anchor Bolt:

Galvanized anchor bolts and galvanized hardware and anchor bolt template. All bolts have a 3" hook.

Anchor Bolt Templates:

WARNING Template must be printed on 11" x 17" sheet for actual size. CHECK SCALE BEFORE USING. Templates shipped with anchor bolts and available .

Pre-Shipped Anchor Bolts:

Bolts can be pre-shipped upon request for additional freight charge.

MaxEPA's/Max Weights:

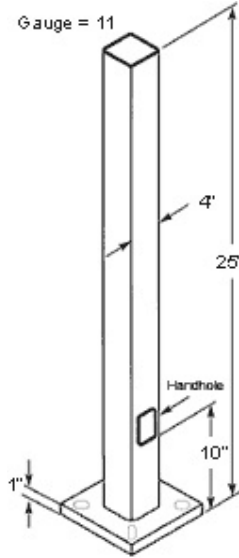
70MPH 4.5 ft_/135 lb
 80MPH 2.3 ft_/80 lb
 90MPH 0.8 ft_/35 lb.

Other

Terms of Sale:

Pole Terms of Sale is available .

Dimensions



Features

- Designed for ground mounting
- Heavy duty TGIC polyester coating
- Reinforced hand holes with grounding lug and removable cover for easy wiring access
- Anchor Bolt Kit includes hand hole cover and base cover (sold separately)
- Custom manufactured for each application