



2830 DAIRY DRIVE  
MADISON, WI 53718-6751  
PHONE: (608) 224-2830  
FAX: (608) 224-2839

## The Edgewater

666 Wisconsin Avenue  
Madison, WI 53703

Owner:  
**Landmark X, LLC**  
22 East Millin Street, Suite 800  
Madison, WI 53703

Developer:  
**Hammes Company**  
22 East Millin Street, Suite 800  
Madison, WI 53703

Civil Engineer:  
**BT Squared, Inc.**  
2830 Dairy Drive  
Madison, WI 53718

Landscape Architect:  
**Ken Saiki Design, Inc.**  
303 S. Patterson, Suite One  
Madison, WI 53703

PROJECT NUMBER: 3026

DATE: SEPTEMBER 13, 2010

REVISIONS:

△	06/18/09
△	10/28/09
△	01/13/10
△	01/27/10
△	02/17/10
△	03/10/10
△	06/13/10

SCALE: 1" = 20'

DRAWING NAME:

**FIRE DEPARTMENT ACCESS PLAN**

DRAWING NUMBER:

# C1.05

### LEGEND

- EXISTING GRADE (2' CONTOUR)
- EXISTING GRADE (10' CONTOUR)
- EXISTING TREELINE/VEGETATION
- EXISTING SHORELINE
- PROPERTY LINE (SUBJECT PROPERTY)
- PROPERTY LINE/RIGHT-OF-WAY
- X X EXISTING FENCE
- E EXISTING ELECTRIC UTILITY
- G EXISTING GAS MAIN
- SA EXISTING SANITARY SEWER
- ST EXISTING STORM SEWER
- W EXISTING WATER MAIN
- o EXISTING HYDRANT
- o EXISTING MANHOLE
- o EXISTING UTILITY/LIGHT POLE
- ST PROPOSED STORM SEWER
- o PROPOSED MANHOLE
- o PROPOSED STORM INLET
- o PROPOSED SEDIMENT TRAP
- 1.0% PROPOSED SLOPE
- PT POTENTIAL FIRE HOSE RUN
- PT FIRE HOSE CONNECTION AT PUMPER TRUCK
- PT FIRE LANE

ENERGY DISSIPATOR

### NOTES:

1. SUBJECT PROPERTY LINE AND EXISTING BUILDING LOCATIONS BASED ON ALTA SURVEY PREPARED BY BADGER SURVEYING AND MAPPING SERVICE, JULY 17, 1997.
2. RIGHT-OF-WAY AND OTHER PROPERTY LINES BASED ON DRAWING OBTAINED FROM THE CITY OF MADISON.
3. TOPOGRAPHIC CONTOURS, VEGETATION, AND UTILITY LOCATIONS BASED ON SITE SURVEY PERFORMED BY BT SQUARED, INC. ON JUNE 30, 2009.
4. PROPOSED SITE FEATURES OBTAINED FROM ELKUS MANFREDI ARCHITECTS.
5. PROPOSED UTILITY LOCATIONS ARE APPROXIMATE.
6. KNOX BOX WILL BE LOCATED NEAR MAIN ENTRY OF NEW HOTEL BUILDING ADJACENT TO AUTO COURT.
7. FIRE DEPARTMENT CONNECTION TO STAND PIPE AND SPRINKLER SYSTEM TO BE DETERMINED BY MECHANICAL CONTRACTOR.

LAKE MENDOTA  
WATER SURFACE = 4.6

GAP BETWEEN HOSES = 2'

HOSE LENGTH = 250 FEET

HOSE LENGTH = 250 FEET

HOSE LENGTH = 190 FEET

HOSE LENGTH = 55 FEET

HOSE LENGTH = 230 FEET

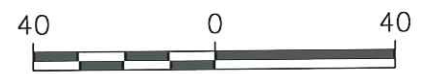
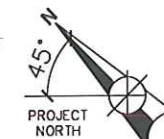
HOSE LENGTH = 140 FEET

HOSE LENGTH = 250 FEET

HOSE LENGTH = 207 FEET

HOSE LENGTH = 185 FEET

HOSE LENGTH = 155 FEET



I:\3026\Drawings-General\1.3026\01\FIRE ACCESS PLAN.dwg, 9/13/2010 12:13:43 PM





2830 DAIRY DRIVE  
MADISON, WI 53718-6751  
PHONE: (608) 224-2830  
FAX: (608) 224-2839

### The Edgewater

666 Wisconsin Avenue  
Madison, WI 53703

Owner:  
**Landmark X, LLC**  
22 East Mifflin Street, Suite 800  
Madison, WI 53703

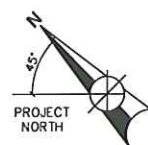
Developer:  
**Hammes Company**  
22 East Mifflin Street, Suite 800  
Madison, WI 53703

Civil Engineer:  
**BT Squared, Inc.**  
2830 Dairy Drive  
Madison, WI 53718

Landscape Architect:  
**Ken Salki Design, Inc.**  
303 S. Patterson, Suite One  
Madison, WI 53703

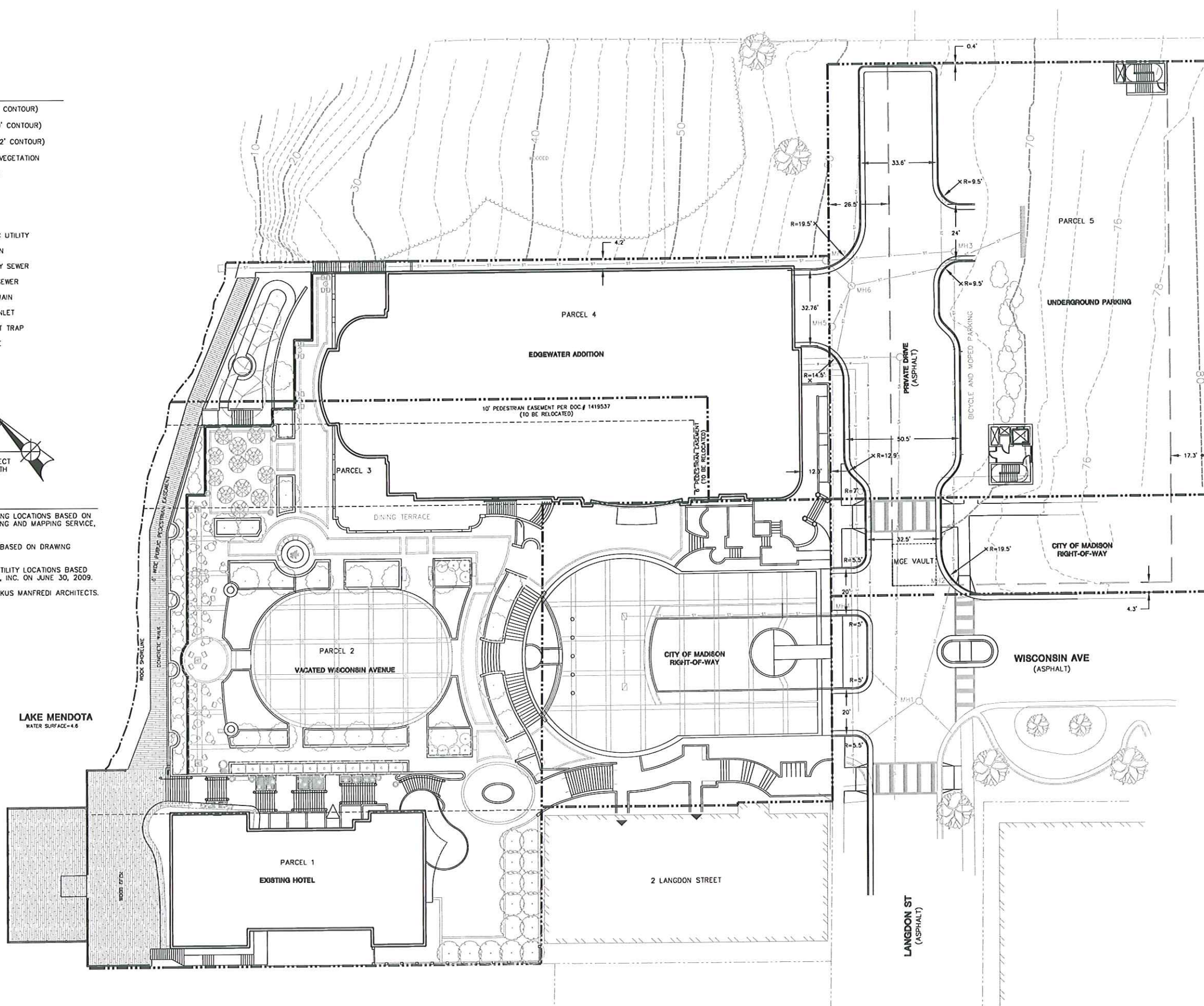
LEGEND	
	EXISTING GRADE (2' CONTOUR)
	EXISTING GRADE (10' CONTOUR)
	PROPOSED GRADE (2' CONTOUR)
	EXISTING TREELINE/VEGETATION
	EXISTING SHORELINE
	PROPERTY LINE
	EASEMENT
	EXISTING FENCE
	PROPOSED ELECTRIC UTILITY
	PROPOSED GAS MAIN
	PROPOSED SANITARY SEWER
	PROPOSED STORM SEWER
	PROPOSED WATER MAIN
	PROPOSED STORM INLET
	PROPOSED SEDIMENT TRAP
	PROPOSED MANHOLE

SCALE REDUCED  
NOT TO SCALE



- NOTES:
- SUBJECT PROPERTY LINE AND EXISTING BUILDING LOCATIONS BASED ON ALTA SURVEY PREPARED BY BADGER SURVEYING AND MAPPING SERVICE, JULY 17, 1997.
  - RIGHT-OF-WAY AND OTHER PROPERTY LINES BASED ON DRAWING OBTAINED FROM THE CITY OF MADISON.
  - TOPOGRAPHIC CONTOURS, VEGETATION, AND UTILITY LOCATIONS BASED ON SITE SURVEY PERFORMED BY BT SQUARED, INC. ON JUNE 30, 2009.
  - PROPOSED SITE FEATURES OBTAINED FROM ELKUS MANFREDI ARCHITECTS.

LAKE MENDOTA  
WATER SURFACE = 4.6



PROJECT NUMBER: 3026

DATE: SEPTEMBER 13, 2010

REVISIONS:	
	06/18/09
	10/28/09
	01/13/10
	01/27/10
	02/17/10
	03/10/10
	09/13/10

SCALE: 1" = 20'

DRAWING NAME:

SITE PLAN

DRAWING NUMBER:

**C1.06**



**GENERAL ELECTRICAL NOTES**

1. REFER TO SHEETS E4.00 AND E4.01 FOR MOUNTING DETAILS.
2. REFER TO SHEET E5.00 FOR LUMINAIRE SCHEDULE.
3. REFER TO SHEET E6.00 FOR LIGHTING CONTROL INFORMATION.
4. REFER TO SHEET E2.01 FOR PHOTOMETRIC ANALYSIS OF THIS AREA.

5. ALL OUTLETS SHOWN IN PLANTERS ARE SWITCHED FOR SEASONAL LIGHTING IN TREES.

**KEYNOTES**

1. TYPICAL OF EACH FLOOR ABOVE WINDOW. REFER TO DETAIL 1/E4.01.
2. DIMMABLE ICE RINK LIGHTS MOUNTED AT 30' ABOVE PLAZA LEVEL. TYPICAL OF FOUR.
3. DIMMABLE PLAZA LIGHTS MOUNTED AT 20 FEET ABOVE FINISHED GRADE WITH DAPPLED PATTERN GOBO.

ELKUS | MANFREDI  
ARCHITECTS

300 A STREET  
BOSTON MASSACHUSETTS 02210  
617-426-1300

**The Edgewater**

666 Wisconsin Avenue  
Madison, WI 53703

Owner:  
Landmark X, LLC  
22 East Mifflin Street, Suite 800  
Madison, WI 53703

Developer:  
Hammes Company  
22 East Mifflin Street, Suite 800  
Madison, WI 53703

Civil Engineer:  
BT<sup>2</sup>, Inc.  
2830 Daily Drive  
Madison, WI 53718

Landscape Architect:  
Ken Salki Design, Inc.  
303 S. Patterson, Suite One  
Madison, WI 53703

**KJ ENGINEERING CONSULTANTS**  
Experience you can build on.  
802 WEST BROADWAY, SUITE 312  
MADISON, WISCONSIN 53713-1839  
608.223.9600  
FAX: 608.223.9601  
www.kjeng.com  
KJWW #10.0082.00

KJ ENGINEERING RESERVES PROPRIETARY RIGHTS INCLUDING COPYRIGHTS TO THIS DRAWING AND THE DATA SHOWN THEREON. SAID DRAWING AND/OR DATA ARE THE EXCLUSIVE PROPERTY OF KJ ENGINEERING AND SHALL NOT BE USED OR REPRODUCED FOR ANY OTHER PROJECT WITHOUT THE EXPRESS WRITTEN APPROVAL AND PARTICIPATION OF KJ ENGINEERING. © 2010 KJWW, P.C.  
STRUCTURAL | MECHANICAL | ELECTRICAL | TECHNOLOGY

PROJECT NUMBER: 08105.00

DATE: September 9, 2010

REVISIONS:

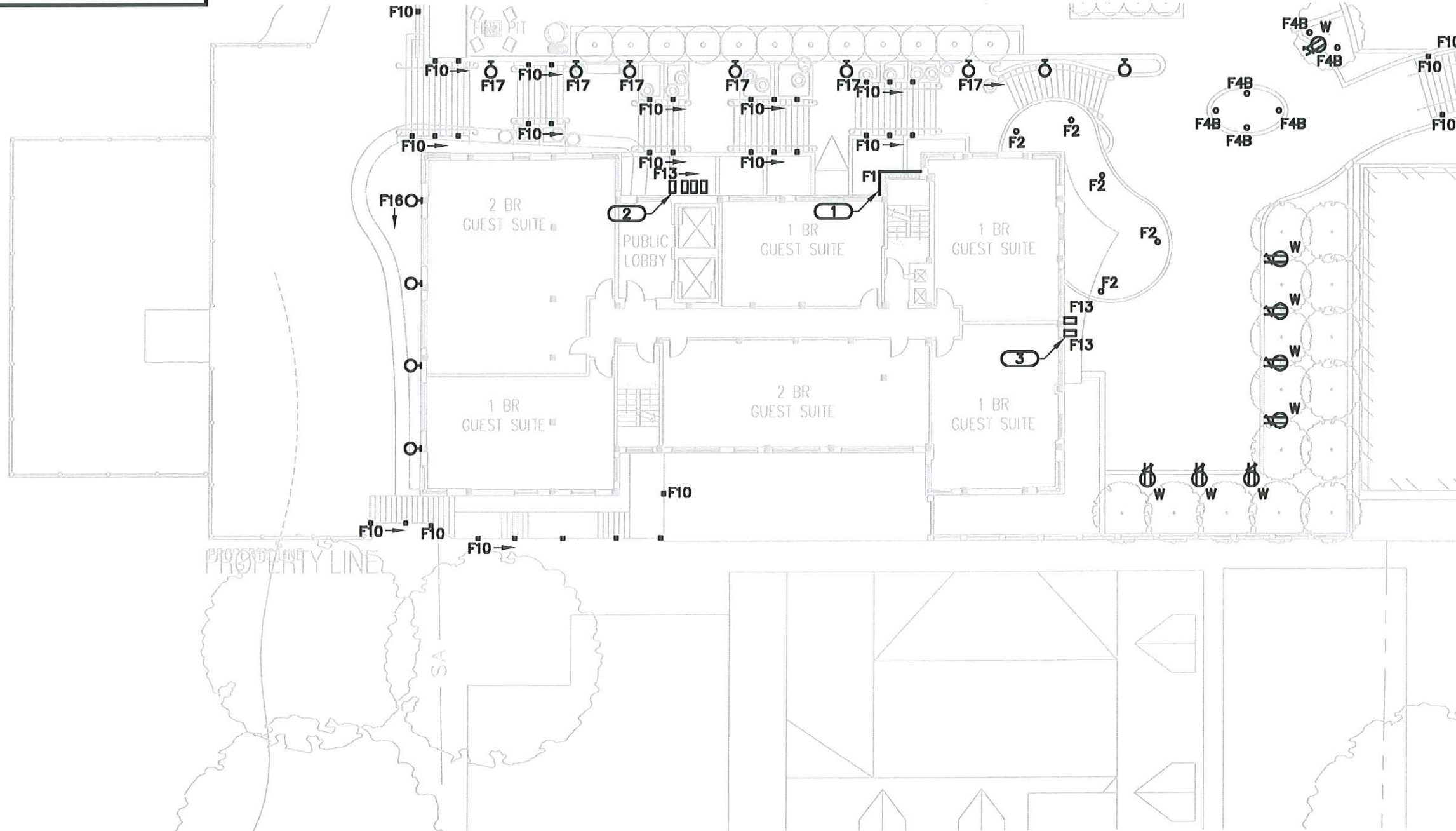
SCALE: 1"=20'-0"

DRAWING NAME:

LIGHTING PLAN - DOCK AND MAIN STAIR WEST

DRAWING NUMBER:

**E1.01**



**1**

**LIGHTING PLAN - DOCK AND MAIN STAIR WEST**

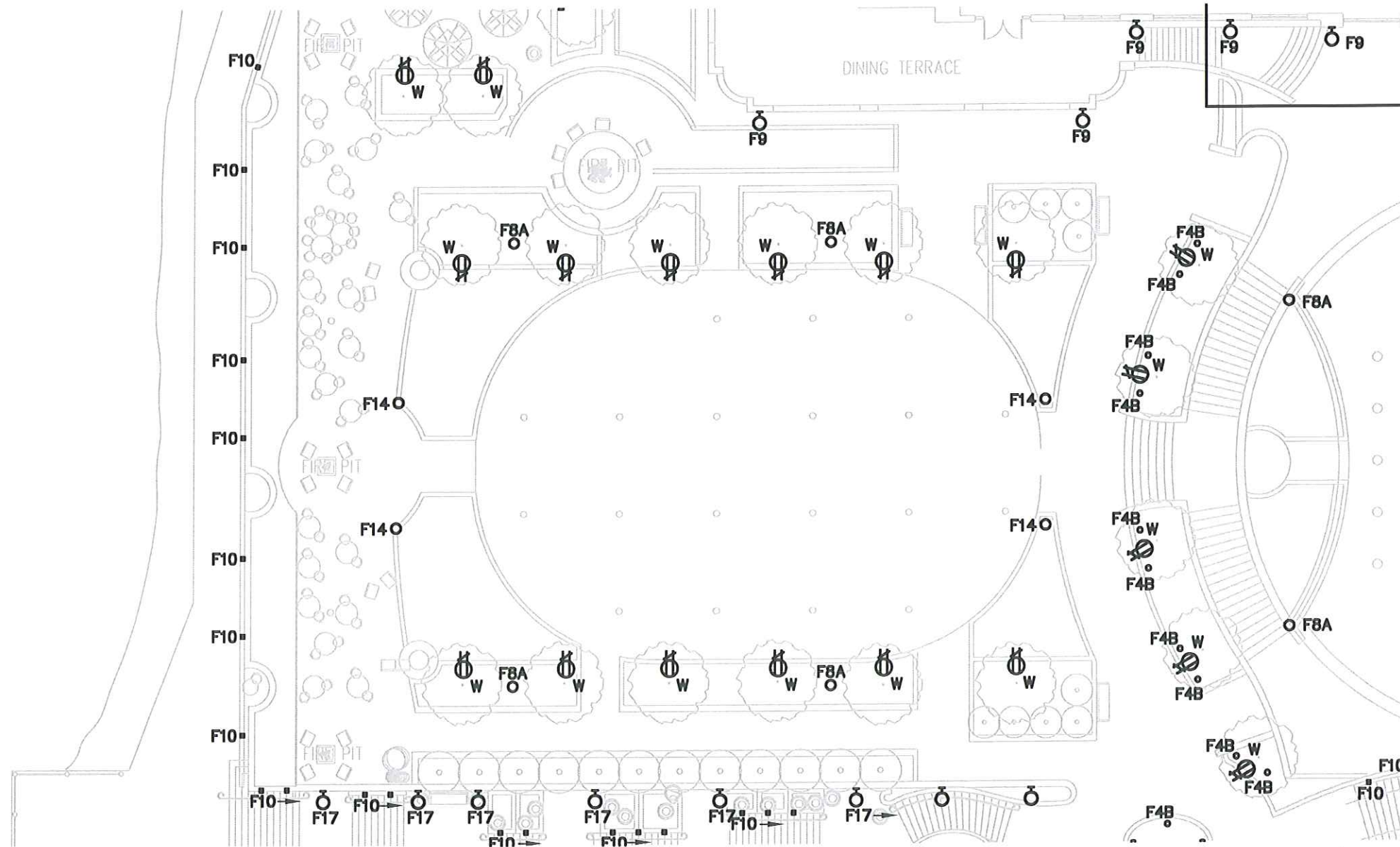
SCALE: 1"=20'-0"



**GENERAL ELECTRICAL NOTES**

- 1. REFER TO SHEETS E4.00 AND E4.01 FOR MOUNTING DETAILS.
- 2. REFER TO SHEET E5.00 FOR LUMINAIRE SCHEDULE.
- 3. REFER TO SHEET E8.00 FOR LIGHTING CONTROL INFORMATION.
- 4. REFER TO SHEET E2.02 FOR PHOTOMETRIC ANALYSIS OF THIS AREA.

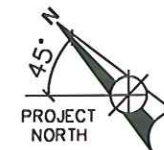
- 5. ALL OUTLETS SHOWN IN PLANTERS ARE SWITCHED FOR SEASONAL LIGHTING IN TREES.



**1**

**LIGHTING PLAN - PLAZA AND LAKE PATH**

SCALE: 1"=20'-0"



ELKUS | MANFREDI  
ARCHITECTS

[address] 300 A STREET  
BOSTON MASSACHUSETTS 02210  
[phone] 617-426-1300

**The Edgewater**

666 Wisconsin Avenue  
Madison, WI 53703

Owner:  
**Landmark X, LLC**  
22 East Mifflin Street, Suite 800  
Madison, WI 53703

Developer:  
**Hammes Company**  
22 East Mifflin Street, Suite 800  
Madison, WI 53703

Civil Engineer:  
**BT<sup>2</sup>, Inc.**  
2630 Dairy Drive  
Madison, WI 53718

Landscape Architect:  
**Ken Salki Design, Inc.**  
303 S. Patterson, Suite One  
Madison, WI 53703

**KJ ENGINEERING CONSULTANTS**  
Experience you can build on.<sup>SM</sup>

802 WEST BROADWAY, SUITE 312  
MADISON, WISCONSIN 53713-1839  
808.223.9000  
FAX: 808.223.9601  
www.kje.com  
KJE #10-0082.00

KJE ENGINEERING RESERVES PROPRIETARY RIGHTS INCLUDING COPYRIGHTS TO THIS DRAWING AND THE DATA THEREON. DESIGN AND/OR DATA ARE THE EXCLUSIVE PROPERTY OF KJE ENGINEERING AND SHALL NOT BE USED OR REPRODUCED FOR ANY OTHER PROJECT WITHOUT THE EXPRESS WRITTEN APPROVAL AND PARTICIPATION OF KJE ENGINEERING. © 2019 KJE, P.C. STRUCTURAL | MECHANICAL | ELECTRICAL | TECHNOLOGY

PROJECT NUMBER: 68126.00

DATE: September 9, 2019

REVISIONS:

SCALE: 1"=20'-0"

DRAWING NAME:

LIGHTING PLAN - PLAZA AND LAKE PATH

DRAWING NUMBER:

**E1.02**



**GENERAL ELECTRICAL NOTES**

- 1. REFER TO SHEETS E4.00 AND E4.01 FOR MOUNTING DETAILS.
- 2. REFER TO SHEET E5.00 FOR LUMINAIRE SCHEDULE.
- 3. REFER TO SHEET E6.00 FOR LIGHTING CONTROL INFORMATION.
- 4. REFER TO SHEET E2.03 FOR PHOTOMETRIC ANALYSIS OF THIS AREA.
- 5. ALL OUTLETS SHOWN IN PLANTERS ARE SWITCHED FOR SEASONAL LIGHTING IN TREES.

**KEYNOTES** 

- 1. REFER TO MOUNTING DETAIL 2/E4.00. TYPICAL FOR ALL F7.

ELKUS | MANFREDI ARCHITECTS

300 A STREET  
BOSTON MASSACHUSETTS 02210  
617-426-1300

**The Edgewater**

666 Wisconsin Avenue  
Madison, WI 53703

Owner:  
**Landmark X, LLC**  
22 East Millin Street, Suite 800  
Madison, WI 53703

Developer:  
**Hammes Company**  
22 East Millin Street, Suite 800  
Madison, WI 53703

Civil Engineer:  
**BT<sup>2</sup>, Inc.**  
2830 Dairy Drive  
Madison, WI 53718

Landscape Architect:  
**Ken Salki Design, Inc.**  
303 S. Patterson, Suite One  
Madison, WI 53703

**KJ ENGINEERING CONSULTANTS**  
Experience you can build on.<sup>SM</sup>  
802 WEST BROADWAY, SUITE 312  
MADISON, WISCONSIN 53713-1839  
608.223.9600 FAX: 608.223.9601  
www.kjew.com  
KJEW #10.0062.00  
KJEW ENGINEERING RESERVES PROPRIETARY RIGHTS, INCLUDING COPYRIGHTS, TO THIS DRAWING AND THE DATA THEREON. REVISIONS, AND SHADING AND/OR DATA ARE THE SOLE PROPERTY OF KJEW ENGINEERING AND SHALL NOT BE USED OR REPRODUCED FOR ANY OTHER PROJECT WITHOUT THE EXPRESS WRITTEN APPROVAL AND PARTICIPATION OF KJEW ENGINEERING © 2010 KJEW, P.C.  
STRUCTURAL | MECHANICAL | ELECTRICAL | TECHNOLOGY

PROJECT NUMBER: 68126.00

DATE: September 9, 2010

REVISIONS:

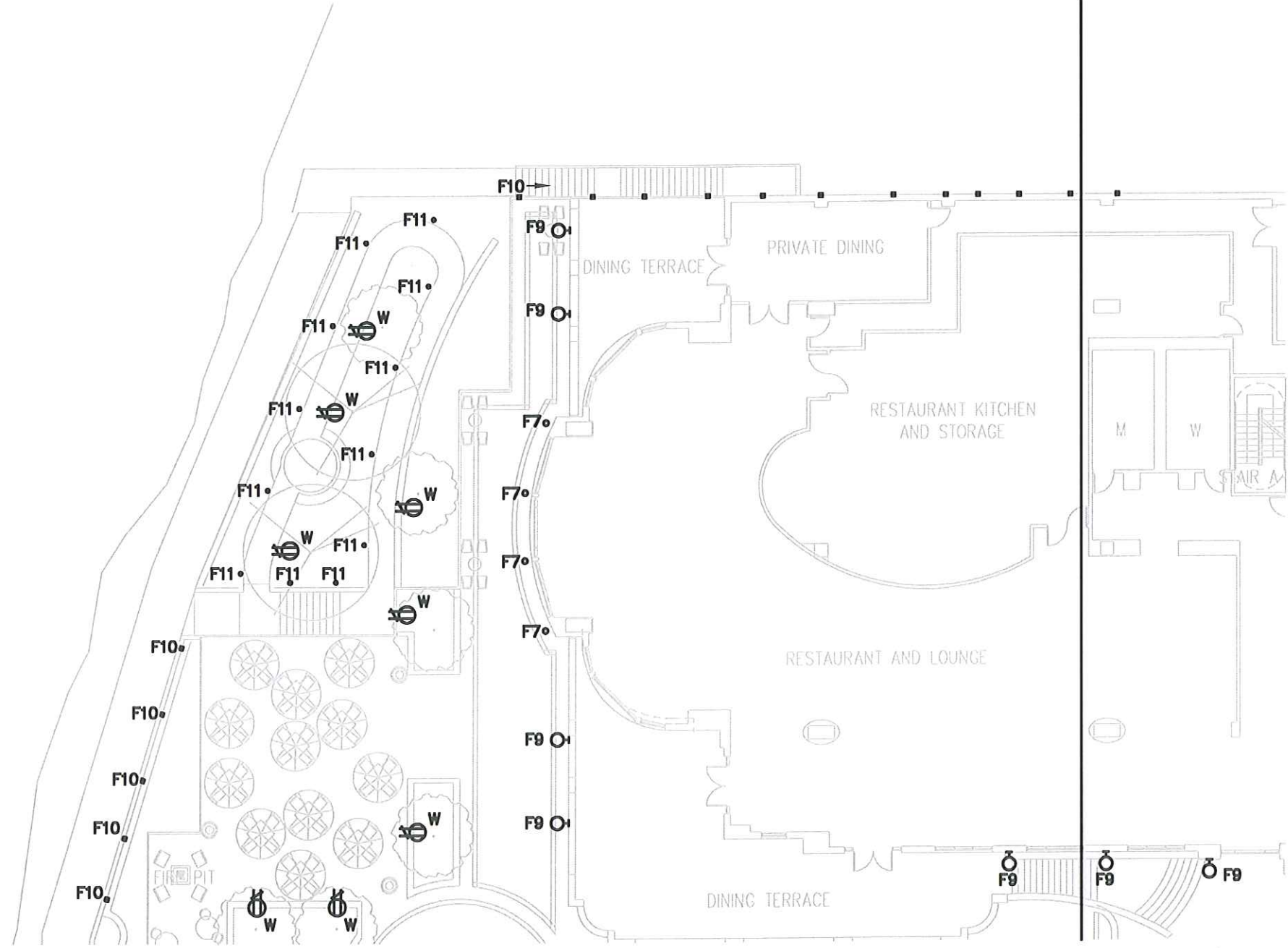
SCALE: 1" = 20'-0"

DRAWING NAME:

**LIGHTING PLAN - WEST PATIO AND LAKE PATH**

DRAWING NUMBER:

**E1.03**



**1**

**LIGHTING PLAN - WEST PATIO AND LAKE PATH**

SCALE: 1"=20'-0"



KJWWP10.0118.00.EDGEWATER HOTEL

**GENERAL ELECTRICAL NOTES**

1. REFER TO SHEETS E4.00 AND E4.01 FOR MOUNTING DETAILS.
2. REFER TO SHEET E5.00 FOR LUMINAIRE SCHEDULE.
3. REFER TO SHEET E8.00 FOR LIGHTING CONTROL INFORMATION.
4. REFER TO SHEET E2.04 FOR PHOTOMETRIC ANALYSIS OF THIS AREA.

**KEYNOTES** 

1. F2 LUMINAIRES MOUNTED ABOVE VESTIBULE IN RECESSED BALCONY ABOVE LEVEL ONE. TYPICAL OF THREE.

ELKUS | MANFREDI  
ARCHITECTS

[address] 300 A STREET  
BOSTON MASSACHUSETTS 02210  
[phone] 617-426-1300

**The Edgewater**

666 Wisconsin Avenue  
Madison, WI 53703

Owner:  
**Landmark X, LLC**  
22 East Millin Street, Suite 600  
Madison, WI 53703

Developer:  
**Hammes Company**  
22 East Millin Street, Suite 600  
Madison, WI 53703

Civil Engineer:  
**BT<sup>2</sup>, Inc.**  
2630 Dairy Drive  
Madison, WI 53718

Landscape Architect:  
**Ken Salki Design, Inc.**  
303 S. Patterson, Suite One  
Madison, WI 53703

**KJ ENGINEERING CONSULTANTS**  
Experience you can build on.<sup>™</sup>  
802 WEST BROADWAY, SUITE 312  
MADISON, WISCONSIN 53713-1839  
608.223.9800  
FAX: 608.223.9801  
www.kjeng.com  
KJ#W 110.0082.00

KJ ENGINEERING RESERVES PROPRIETARY RIGHTS, INCLUDING COPYRIGHTS, TO THIS DRAWING AND THE DATA SHOWN THEREON. THIS DRAWING AND/OR DATA ARE THE EXCLUSIVE PROPERTY OF KJ ENGINEERING AND SHALL NOT BE USED OR REPRODUCED FOR ANY OTHER PROJECT WITHOUT THE EXPRESS WRITTEN APPROVAL AND PARTICIPATION OF KJ ENGINEERING. © 2010 KJ, P.C.  
STRUCTURAL | MECHANICAL | ELECTRICAL | TECHNOLOGY

PROJECT NUMBER: 08126.00

DATE: September 9, 2010

REVISIONS:

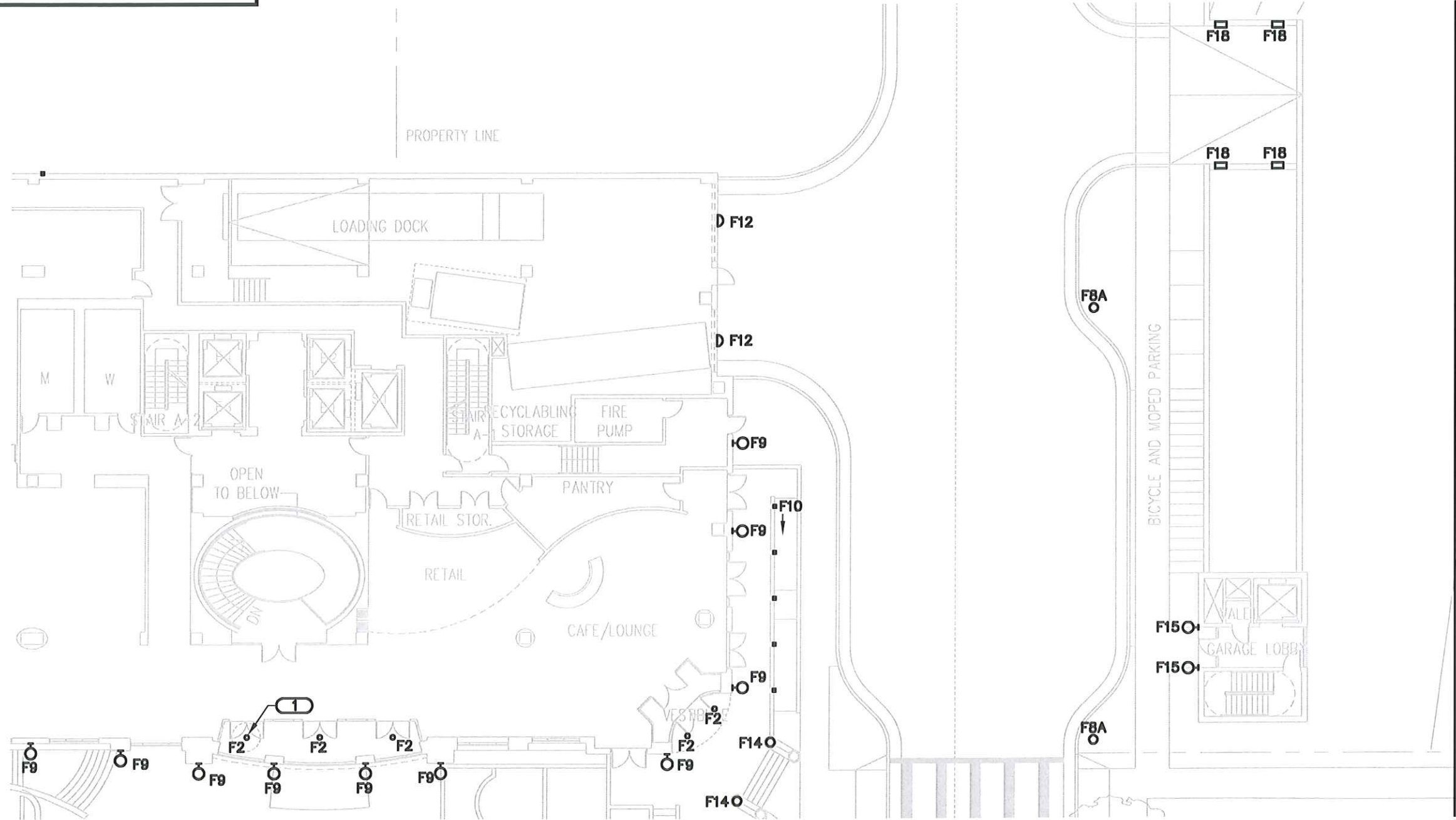
SCALE: 1"=20'-0"

DRAWING NAME:

LIGHTING PLAN - EAST FACADE AND GARAGE ENTRY

DRAWING NUMBER:

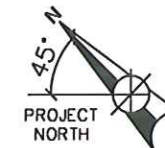
**E1.04**



**1**

**LIGHTING PLAN - EAST FACADE AND GARAGE ENTRY**

SCALE: 1"=20'-0"





**GENERAL ELECTRICAL NOTES**

1. REFER TO SHEETS E4.00 AND E4.01 FOR MOUNTING DETAILS.
2. REFER TO SHEET E5.00 FOR LUMINAIRE SCHEDULE.
3. REFER TO SHEET E6.00 FOR LIGHTING CONTROL INFORMATION.
4. REFER TO SHEET E2.05 FOR PHOTOMETRIC ANALYSIS OF THIS AREA.

**KEYNOTES** 

1. NEW FULL CUTOFF AREA LIGHT - CITY STANDARD.

ELKUS | MANFREDI  
ARCHITECTS

[Address] 300 A STREET  
BOSTON MASSACHUSETTS 02210  
[Phone] 617-426-1300

**The Edgewater**

666 Wisconsin Avenue  
Madison, WI 53703

Owner:  
**Landmark X, LLC**  
22 East Millin Street, Suite 800  
Madison, WI 53703

Developer:  
**Hammes Company**  
22 East Millin Street, Suite 600  
Madison, WI 53703

Civil Engineer:  
**BT<sup>2</sup>, Inc.**  
2830 Dairy Drive  
Madison, WI 53718

Landscape Architect:  
**Ken Salki Design, Inc.**  
303 S. Patterson, Suite One  
Madison, WI 53703

**KJ ENGINEERING CONSULTANTS**  
Experience you can build on.<sup>SM</sup>  
802 WEST BROADWAY, SUITE 312  
MADISON, WISCONSIN 53713-1839  
608.223.9600  
FAX: 608.223.9601  
www.kjew.com  
KJEW #10 0082.00

KJEW ENGINEERING RESERVES PROPRIETARY RIGHTS INCLUDING COPYRIGHTS TO THE DRAWING AND THE DATA SHOWN THEREON. THIS DRAWING AND/OR DATA ARE THE EXCLUSIVE PROPERTY OF KJEW ENGINEERING AND SHALL NOT BE USED OR REPRODUCED FOR ANY OTHER PROJECT WITHOUT THE EXPRESS WRITTEN APPROVAL AND PARTICIPATION OF KJEW ENGINEERING. © 2010 KJEW, P.C.  
STRUCTURAL | MECHANICAL | ELECTRICAL | TECHNOLOGY

PROJECT NUMBER: 08125.00

DATE: September 9, 2010

REVISIONS:

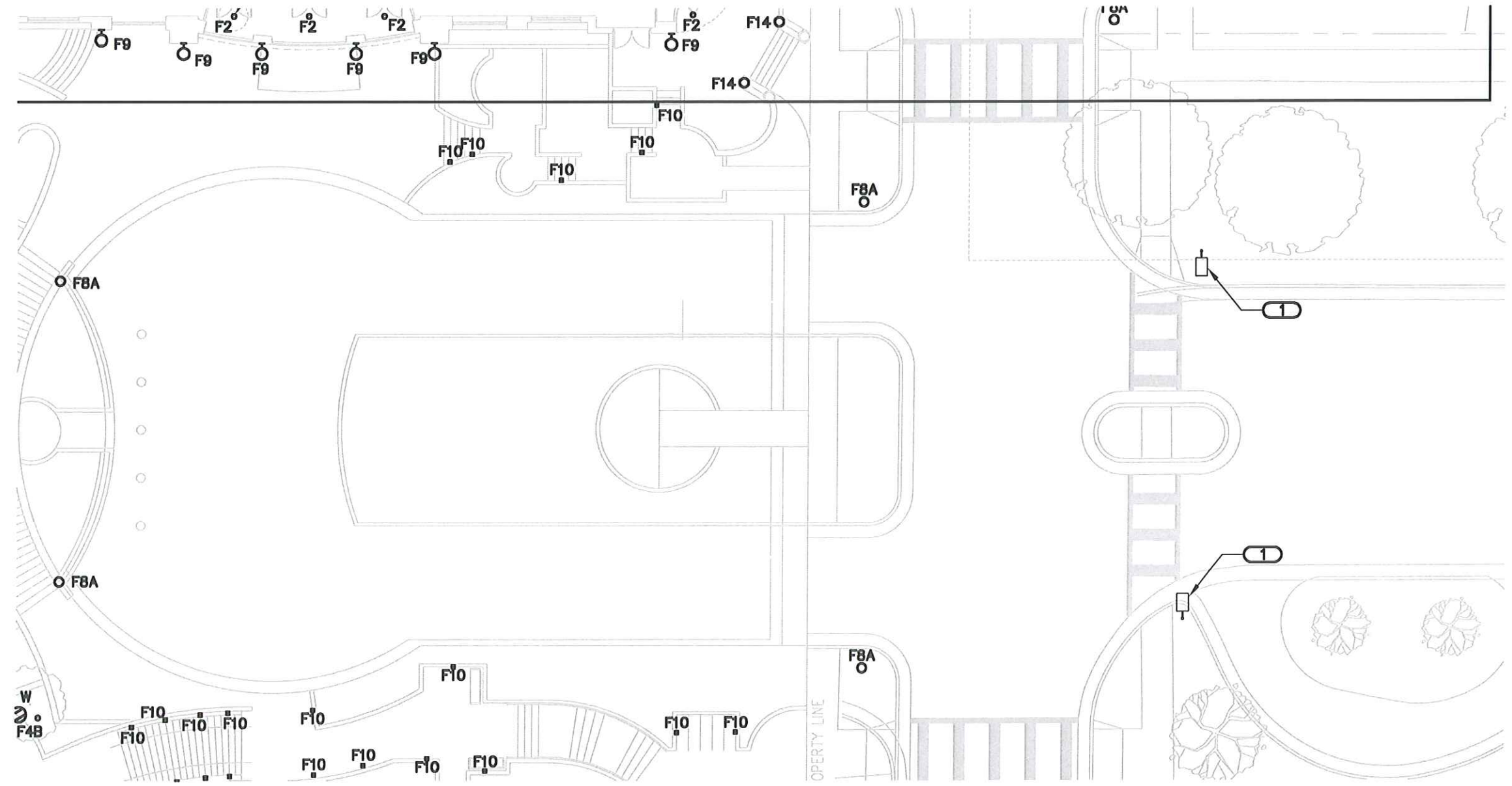
SCALE: 1" = 20'-0"

DRAWING NAME:

LIGHTING PLAN - MAIN ENTRY AND AUTO COURT

DRAWING NUMBER:

**E1.05**



**1**

**LIGHTING PLAN - MAIN ENTRY AND AUTO COURT**

SCALE: 1"=20'-0"



KJEW#1018125.00 EDgewater HOTEL

**GENERAL ELECTRICAL NOTES**

1. REFER TO SHEETS E4.00 AND E4.01 FOR MOUNTING DETAILS.
2. REFER TO SHEET E5.00 FOR LUMINAIRE SCHEDULE.
3. REFER TO SHEET E8.00 FOR LIGHTING CONTROL INFORMATION.
4. REFER TO SHEET E2.08 FOR PHOTOMETRIC ANALYSIS OF THIS AREA.

**KEYNOTES** 

1. EXISTING ACORN STYLE PEDESTRIAN SCALE POLE - CITY STANDARD.

ELKUS | MANFREDI  
ARCHITECTS

[address] 300 A STREET  
BOSTON MASSACHUSETTS 02210  
[t] 617-426-1300

**The Edgewater**

666 Wisconsin Avenue  
Madison, WI 53703

Owner:  
**Landmark X, LLC**  
22 East Millin Street, Suite 600  
Madison, WI 53703

Developer:  
**Hammes Company**  
22 East Millin Street, Suite 600  
Madison, WI 53703

Civil Engineer:  
**BT<sup>2</sup>, Inc.**  
2630 Dally Drive  
Madison, WI 53718

Landscape Architect:  
**Ken Salki Design, Inc.**  
303 S. Patterson, Suite One  
Madison, WI 53703

**KJ ENGINEERING CONSULTANTS**  
Experience you can build on.<sup>SM</sup>

802 WEST BROADWAY, SUITE 312  
MADISON, WISCONSIN 53713-1839  
608.223.9600 FAX: 608.223.9601  
www.kjw.com  
KJW #10-0082-00

KJW ENGINEERING CONSULTANTS PROVIDES THESE SERVICES AS AN INDEPENDENT CONTRACTOR. THE INFORMATION, DESIGN, AND DATA ARE THE EXCLUSIVE PROPERTY OF KJW ENGINEERING CONSULTANTS AND SHALL NOT BE USED OR REPRODUCED FOR ANY OTHER PROJECT WITHOUT THE EXPRESS WRITTEN APPROVAL AND PARTICIPATION OF KJW ENGINEERING CONSULTANTS, P.C. © 2010 KJW, P.C. STRUCTURAL | MECHANICAL | ELECTRICAL | TECHNOLOGY

PROJECT NUMBER: 08126.00

DATE: September 9, 2010

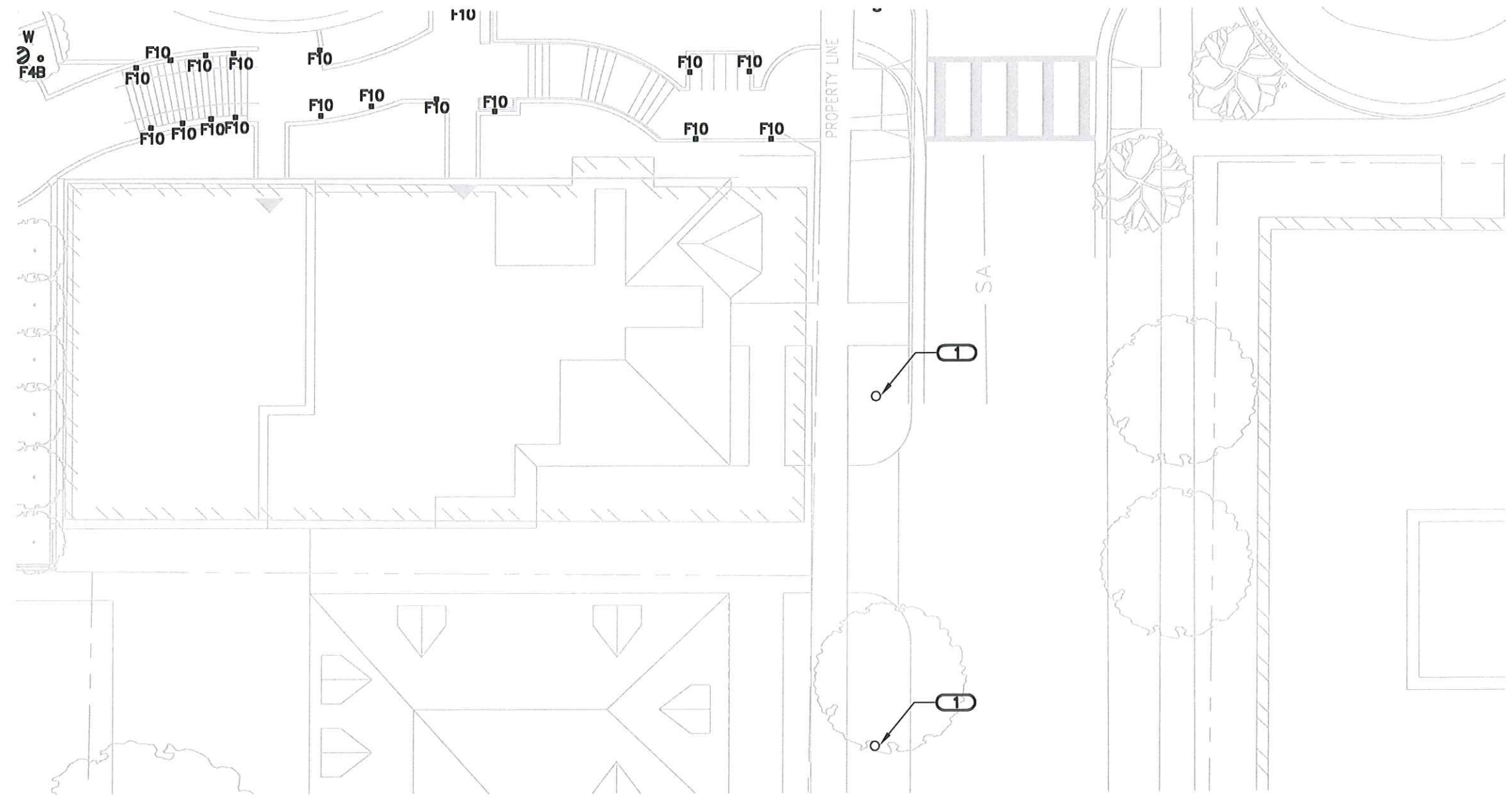
REVISIONS:

SCALE: 1" = 20'-0"

DRAWING NAME:  
**LIGHTING PLAN - MAIN STAIR EAST**

DRAWING NUMBER:

**E1.06**



**1**

**LIGHTING PLAN - MAIN STAIR EAST**

SCALE: 1"=20'-0"





**GENERAL ELECTRICAL NOTES**

1. REFER TO SHEETS E4.00 AND E4.01 FOR MOUNTING DETAILS.
2. REFER TO SHEET E5.00 FOR LUMINAIRE SCHEDULE.
3. REFER TO SHEET E8.00 FOR LIGHTING CONTROL INFORMATION.

**KEYNOTES**

1. REFER TO MOUNTING DETAIL 2/E4.00. TYPICAL FOR ALL F8.
2. REFER TO MOUNTING DETAIL 1/E4.00. TYPICAL FOR ALL F3 AND F5.

ELKUS | MANFREDI  
ARCHITECTS

300 A STREET  
BOSTON MASSACHUSETTS 02210  
617-426-1300

**The Edgewater**

666 Wisconsin Avenue  
Madison, WI 53703

Owner:  
**Landmark X, LLC**  
22 East Millin Street, Suite 600  
Madison, WI 53703

Developer:  
**Hammes Company**  
22 East Millin Street, Suite 600  
Madison, WI 53703

Civil Engineer:  
**BT<sup>2</sup>, Inc.**  
2830 Dairy Drive  
Madison, WI 53718

Landscape Architect:  
**Ken Salki Design, Inc.**  
303 S. Patterson, Suite One  
Madison, WI 53703

**KJW** ENGINEERING CONSULTANTS  
Experience you can build on.<sup>SM</sup>

802 WEST BROADWAY, SUITE 312  
MADISON, WISCONSIN 53713-1839  
808.223.9600  
FAX: 808.223.9601  
www.kjw.com  
KJW #10-0082.00  
KJW ENGINEERING RESERVES PROPRIETARY RIGHTS INCLUDING COPYRIGHTS TO THIS DRAWING AND THE DATA THEREON. BID DRAWING AND/OR BIDDING ARE THE EXCLUSIVE PROPERTY OF KJW ENGINEERING AND SHALL NOT BE USED OR REPRODUCED FOR ANY OTHER PROJECT WITHOUT THE EXPRESS WRITTEN APPROVAL AND PARTICIPATION OF KJW ENGINEERING © 2010 KJW, P.C. STRUCTURAL | MECHANICAL | ELECTRICAL | TECHNOLOGY

PROJECT NUMBER: 08126.00

DATE: September 9, 2010

REVISIONS:

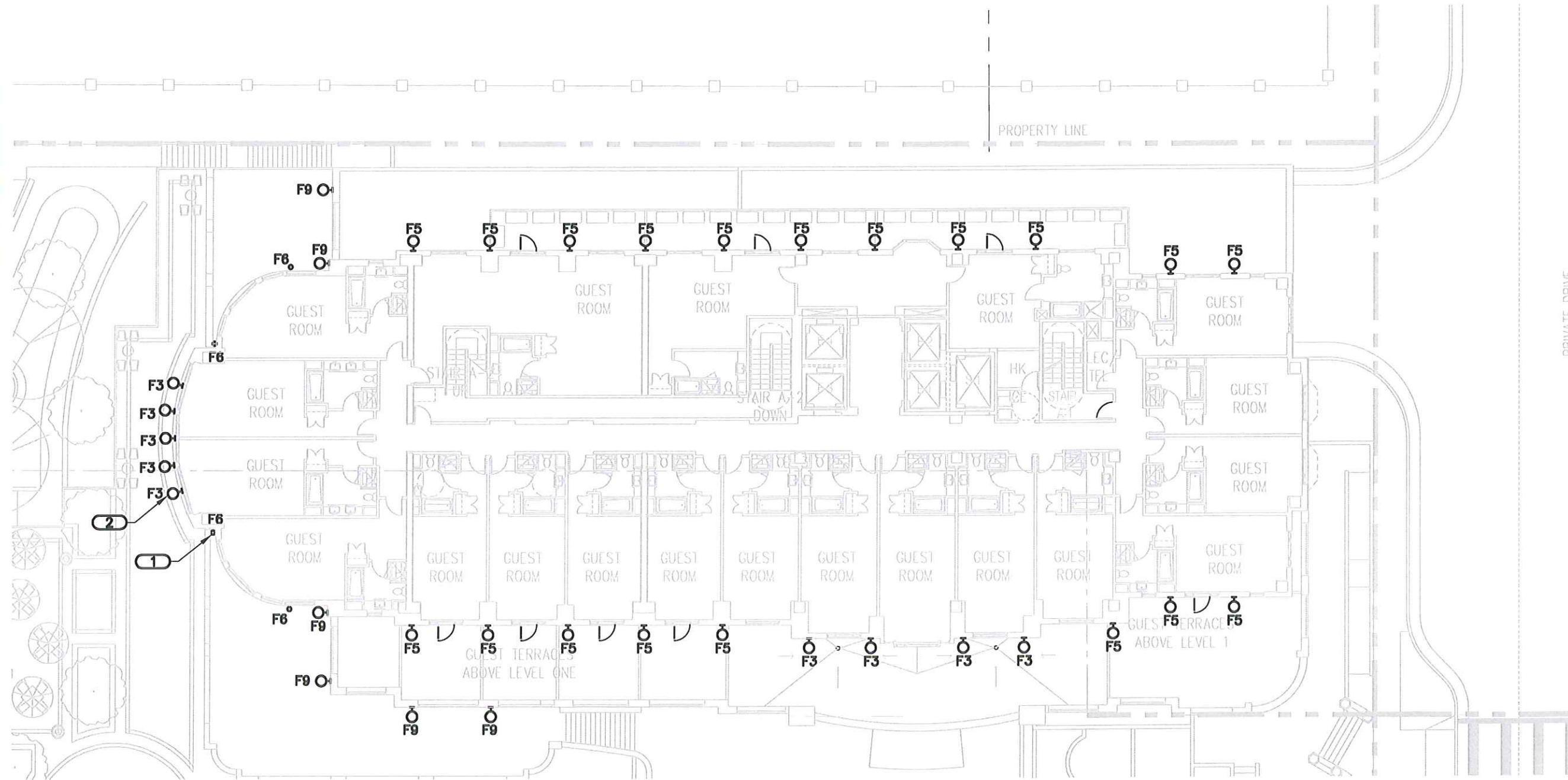
SCALE: 1" = 20'-0"

DRAWING NAME:

LIGHTING PLAN - DINING PLAZA LEVEL

DRAWING NUMBER:

**E1.07**



**1**

**LIGHTING PLAN - DINING PLAZA LEVEL**

SCALE: 1"=20'-0"





**GENERAL ELECTRICAL NOTES**

1. REFER TO SHEETS E4.00 AND E4.01 FOR MOUNTING DETAILS.
2. REFER TO SHEET E5.00 FOR LUMINAIRE SCHEDULE.
3. REFER TO SHEET E6.00 FOR LIGHTING CONTROL INFORMATION.
4. REFER TO SHEET E2.08 FOR PHOTOMETRIC ANALYSIS OF THIS AREA.

**KEYNOTES** 

1. REFER TO MOUNTING DETAIL 1/E4.00. TYPICAL FOR ALL F3.

ELKUS | MANFREDI  
ARCHITECTS

[address] 300 A STREET  
BOSTON MASSACHUSETTS 02210  
[tel] 617-426-1300

**The Edgewater**

66 Wisconsin Avenue  
Madison, WI 53703

Owner:  
**Landmark X, LLC**  
22 East Millin Street, Suite 600  
Madison, WI 53703

Developer:  
**Hammes Company**  
22 East Millin Street, Suite 600  
Madison, WI 53703

Civil Engineer:  
**BT<sup>2</sup>, Inc.**  
2830 Dairy Drive  
Madison, WI 53718

Landscape Architect:  
**Ken Salki Design, Inc.**  
303 S. Patterson, Suite One  
Madison, WI 53703

**KJW ENGINEERING CONSULTANTS**  
Experience you can build on.<sup>™</sup>  
802 WEST BROADWAY, SUITE 312  
MADISON, WISCONSIN 53713-1839  
608.223.9600  
FAX: 608.223.9601  
www.kjew.com  
KJW #10.0082.00

KJW ENGINEERING RESERVES PROPRIETARY RIGHTS, INCLUDING COPYRIGHTS, TO THIS DRAWING AND THE DATA SHOWN THEREON. NO DRAWING AND/OR DATA ARE THE EXCLUSIVE PROPERTY OF KJW ENGINEERING AND SHALL NOT BE USED OR REPRODUCED FOR ANY OTHER PROJECT WITHOUT THE EXPRESS WRITTEN APPROVAL AND PARTICIPATION OF KJW ENGINEERING. © 2010 KJW, P.C. STRUCTURAL | MECHANICAL | ELECTRICAL | TECHNOLOGY

PROJECT NUMBER: 68126.00

DATE: September 9, 2010

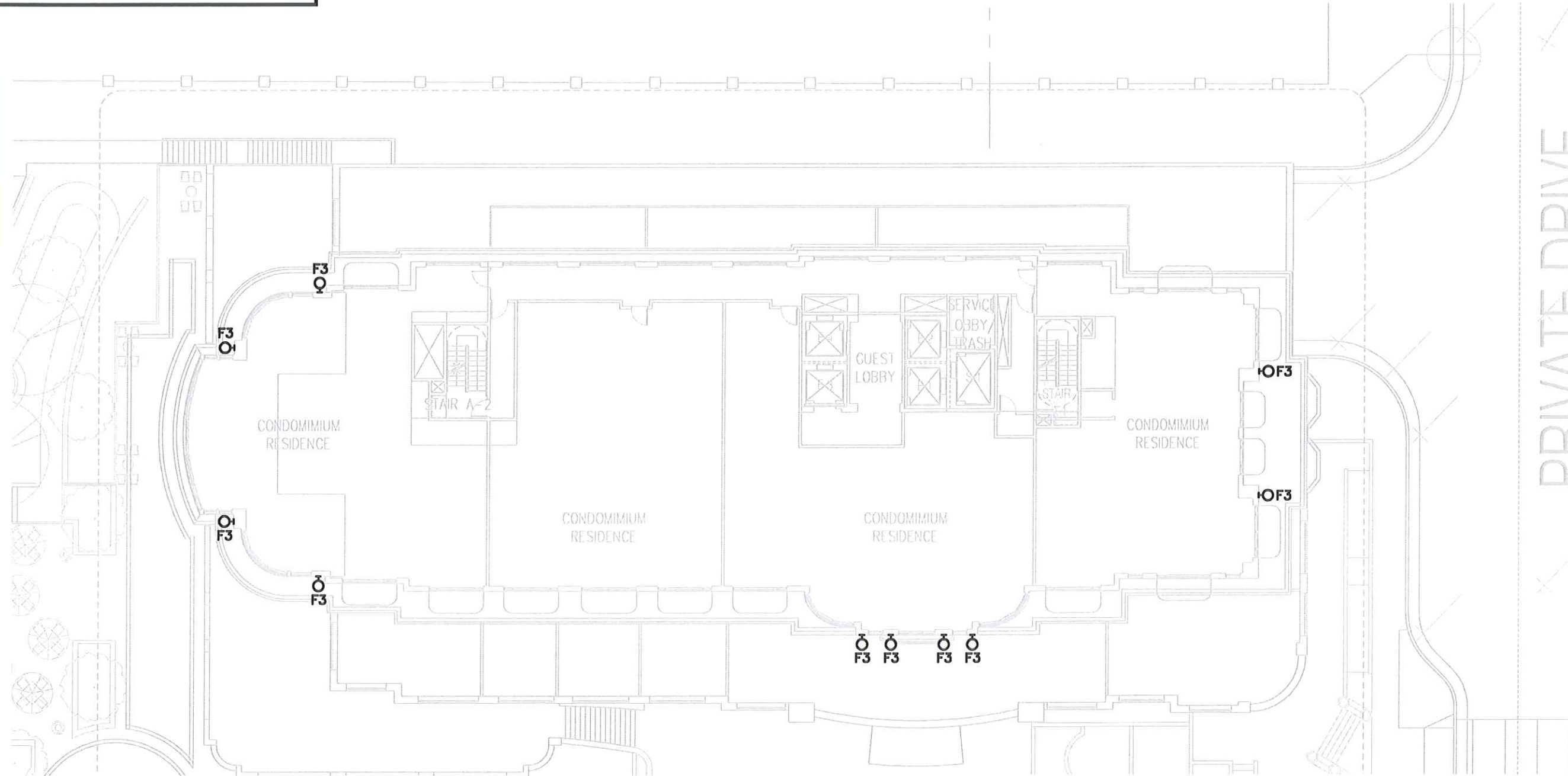
REVISIONS:

SCALE: 1" = 20'-0"

DRAWING NAME:  
**LIGHTING PLAN - LEVEL 7**

DRAWING NUMBER:

**E1.08**



**1**

**LIGHTING PLAN - LEVEL 7**

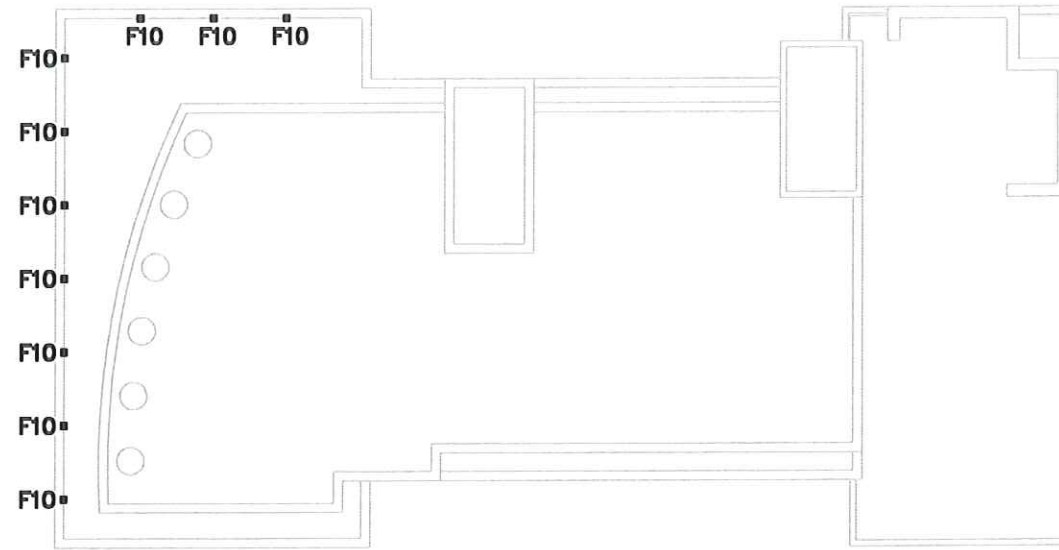
SCALE: 1"=20'-0"





**GENERAL ELECTRICAL NOTES**

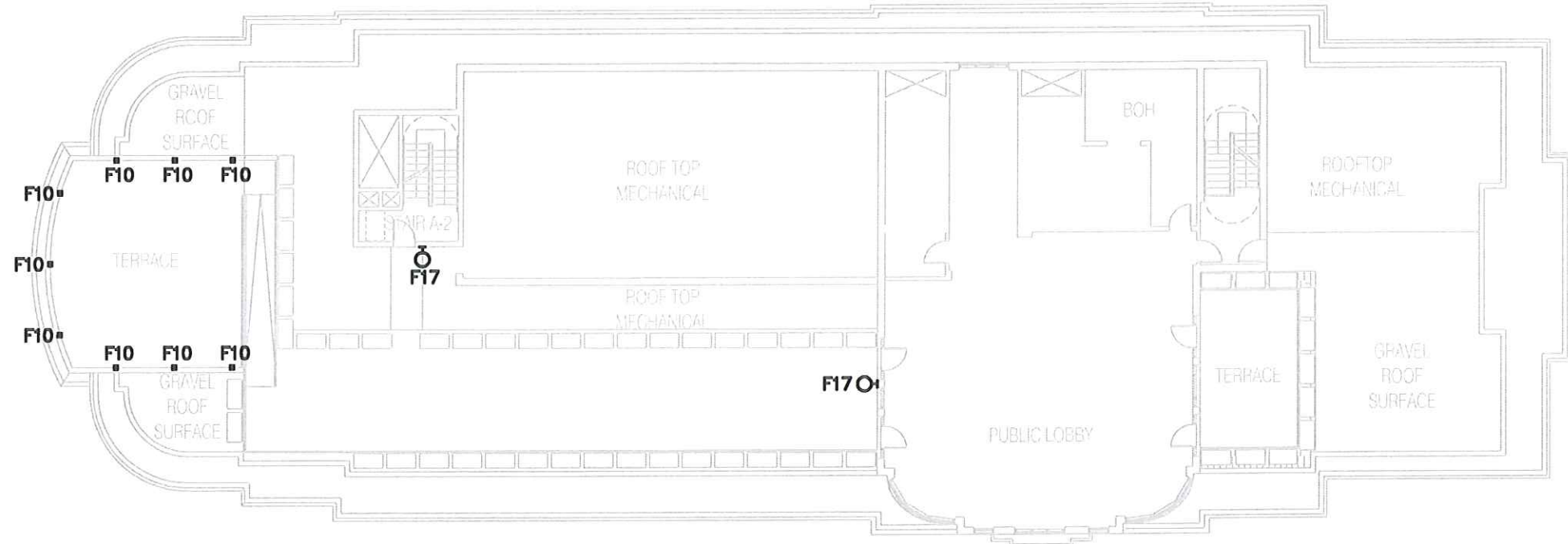
1. REFER TO SHEETS E4.00 AND E4.01 FOR MOUNTING DETAILS.
2. REFER TO SHEET E5.00 FOR LUMINAIRE SCHEDULE.
3. REFER TO SHEET E8.00 FOR LIGHTING CONTROL INFORMATION.
4. REFER TO SHEET E2.09 FOR PHOTOMETRIC ANALYSIS OF THIS AREA.



**1**

**LIGHTING PLAN - EXISTING BUILDING ROOF**

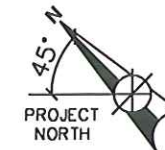
SCALE: 1"=20'-0"



**2**

**LIGHTING PLAN - NEW BUILDING ROOF**

SCALE: 1"=20'-0"



ELKUS | MANFREDI  
ARCHITECTS

300 A STREET  
BOSTON MASSACHUSETTS 02210  
617-426-1300

**The Edgewater**

666 Wisconsin Avenue  
Madison, WI 53703

Owner:  
**Landmark X, LLC**  
22 East Mifflin Street, Suite 600  
Madison, WI 53703

Developer:  
**Hammes Company**  
22 East Mifflin Street, Suite 600  
Madison, WI 53703

Civil Engineer:  
**BT<sup>2</sup>, Inc.**  
2630 Dally Drive  
Madison, WI 53718

Landscape Architect:  
**Ken Salki Design, Inc.**  
303 S. Patterson, Suite One  
Madison, WI 53703



802 WEST BROADWAY, SUITE 312  
MADISON, WISCONSIN 53713-1839  
608.223.9000  
FAX: 608.223.9601  
www.kjw.com  
KJW #10-0082.00  
KJW ENGINEERING RESERVES PROPRIETARY RIGHTS INCLUDING COPYRIGHTS TO THIS DRAWING AND THE DATA THEREON. REVISIONS, RAO DRAWING AND/OR DATA ARE THE EXCLUSIVE PROPERTY OF KJW ENGINEERING AND SHALL NOT BE REPRODUCED OR TRANSMITTED IN ANY FORM OR BY ANY MEANS WITHOUT THE EXPRESS WRITTEN APPROVAL AND PARTICIPATION OF KJW ENGINEERING © 2010 KJW, P.C. STRUCTURAL | MECHANICAL | ELECTRICAL | TECHNOLOGY

PROJECT NUMBER: 08126.00

DATE: September 9, 2010

REVISIONS:

SCALE: 1"= 20'-0"

DRAWING NAME:  
**LIGHTING - ROOF LEVEL**

DRAWING NUMBER:

**E1.09**



The Edgewater

666 Wisconsin Avenue  
Madison, WI 53703

Owner:  
**Landmark X, LLC**  
22 East Mifflin Street, Suite 800  
Madison, WI 53703

Developer:  
**Hammes Company**  
22 East Mifflin Street, Suite 800  
Madison, WI 53703

Civil Engineer:  
**BT<sup>2</sup>, Inc.**  
2630 Dairy Drive  
Madison, WI 53718

Landscape Architect:  
**Ken Salki Design, Inc.**  
303 S. Patterson, Suite One  
Madison, WI 53703

**KJ ENGINEERING CONSULTANTS**  
Experience you can build on.<sup>™</sup>  
802 WEST BROADWAY, SUITE 312  
MADISON, WISCONSIN 53713-1839  
608.223.9600  
FAX: 608.223.9601  
www.kjw.com  
KJW #10-0062.00

THIS DOCUMENT RESERVES PROPRIETARY RIGHTS INCLUDING COPYRIGHTS TO THE DRAWING AND THE DATA FROM THE DESIGN AND DRAWING AND/OR DATA ARE THE SOLE PROPERTY OF KJW ENGINEERING CONSULTANTS AND SHALL NOT BE USED OR REPRODUCED FOR ANY OTHER PROJECT WITHOUT THE EXPRESS WRITTEN APPROVAL AND PARTICIPATION OF KJW ENGINEERING CONSULTANTS, P.C.

PROJECT NUMBER: 06126.00

DATE: September 9, 2010

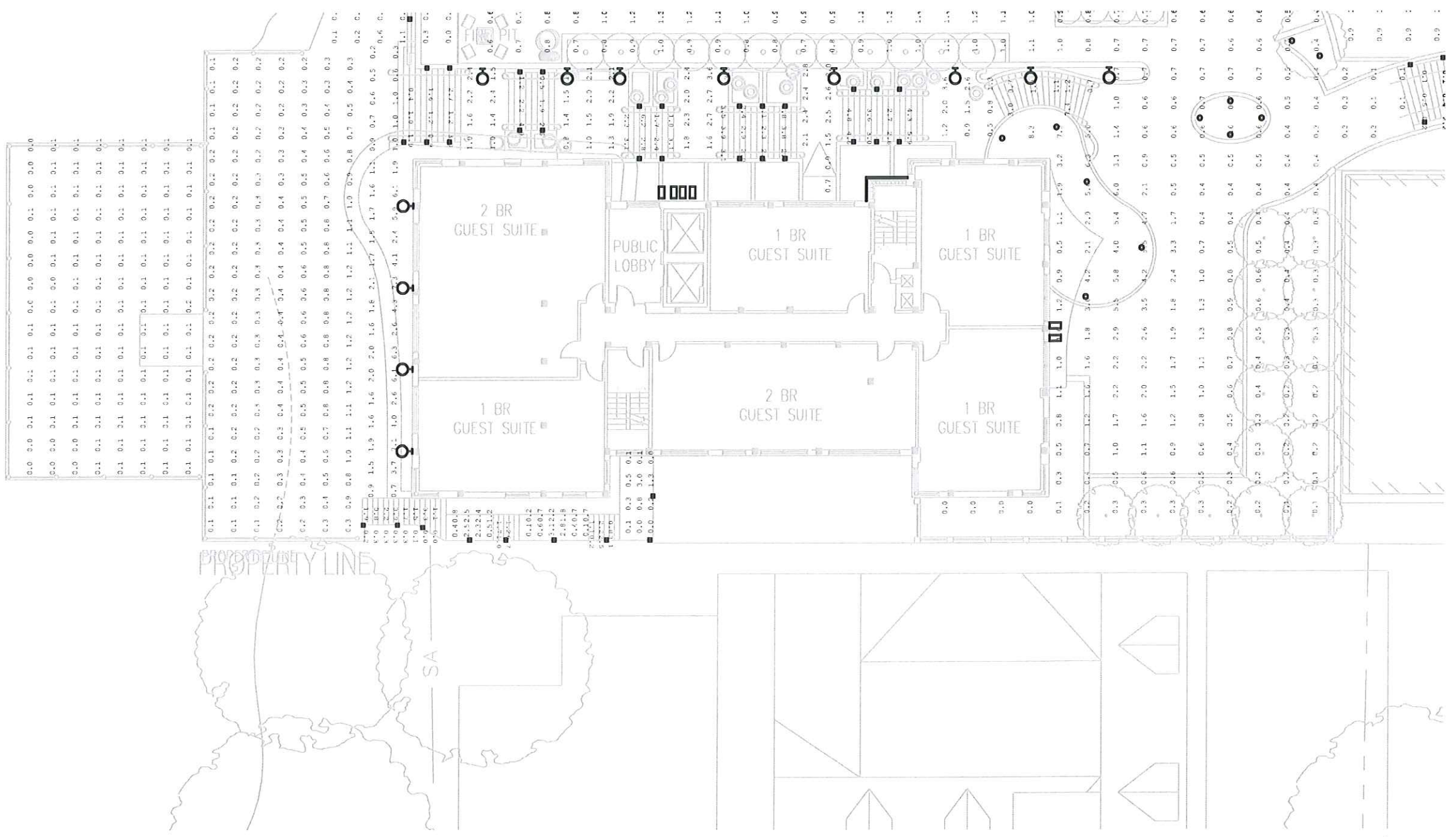
REVISIONS:

SCALE: 1"= 20'-0"

DRAWING NAME:  
**PHOTOMETRIC ANALYSIS - DOCK AND MAIN STAIR WEST**

DRAWING NUMBER:

**E2.01**



**1**

**PHOTOMETRIC ANALYSIS - DOCK AND MAIN STAIR WEST**

SCALE: 1"=20'-0"



The Edgewater

666 Wisconsin Avenue  
Madison, WI 53703

Owner:  
**Landmark X, LLC**  
22 East Mifflin Street, Suite 600  
Madison, WI 53703

Developer:  
**Hammes Company**  
22 East Mifflin Street, Suite 600  
Madison, WI 53703

Civil Engineer:  
**BT<sup>2</sup>, Inc.**  
2630 Dairy Drive  
Madison, WI 53718

Landscape Architect:  
**Ken Salki Design, Inc.**  
303 S. Patterson, Suite One  
Madison, WI 53703

**KJ ENGINEERING CONSULTANTS**  
Experience you can build on™  
802 WEST BROADWAY, SUITE 312  
MADISON, WISCONSIN 53713-1839  
608.223.9600  
FAX: 608.223.9601  
www.kjw.com  
KJW #10.0062.00

THIS DOCUMENT RESERVES PROPRIETARY RIGHTS INCLUDING COPYRIGHTS TO THIS DRAWING AND THE DATA THEREIN. NO PART OF THIS DRAWING AND THE DATA HEREIN, INCLUDING ANY INFORMATION AND DATA, SHALL BE REPRODUCED OR TRANSMITTED IN ANY FORM OR BY ANY MEANS, ELECTRONIC OR MECHANICAL, WITHOUT THE EXPRESS WRITTEN PERMISSION AND PARTICIPATION OF KJW ENGINEERING CONSULTANTS, P.C.

PROJECT NUMBER: 08126.00

DATE: September 9, 2010

REVISIONS:

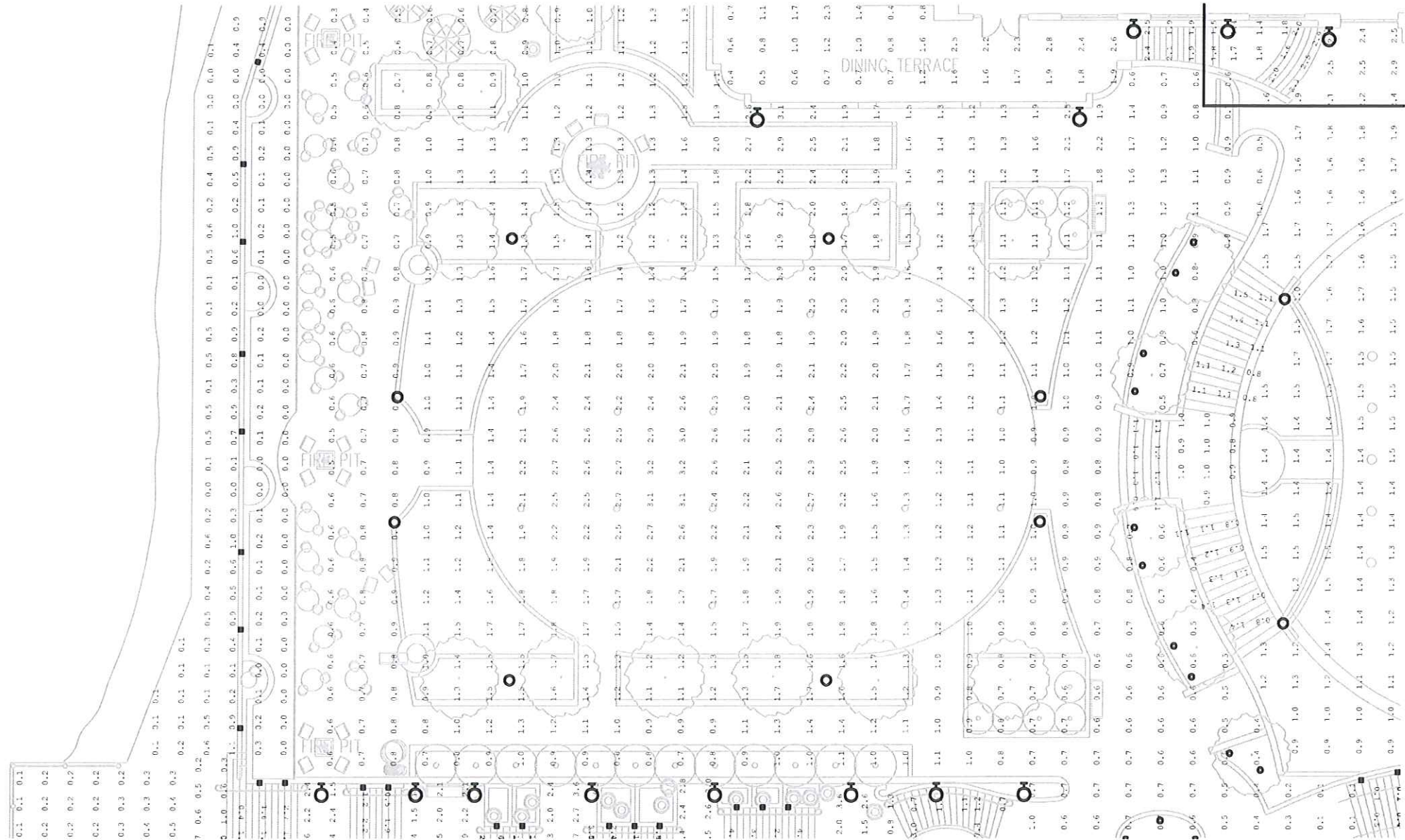
SCALE: 1"=20'-0"

DRAWING NAME:

PHOTOMETRIC ANALYSIS - PLAZA AND LAKE PATH

DRAWING NUMBER:

E2.02



1

PHOTOMETRIC ANALYSIS - PLAZA AND LAKE PATH

SCALE: 1"=20'-0"





The Edgewater

666 Wisconsin Avenue  
Madison, WI 53703

Owner:  
**Landmark X, LLC**  
22 East Mifflin Street, Suite 600  
Madison, WI 53703

Developer:  
**Hammes Company**  
22 East Mifflin Street, Suite 600  
Madison, WI 53703

Civil Engineer:  
**BT<sup>2</sup>, Inc.**  
2630 Dairy Drive  
Madison, WI 53718

Landscape Architect:  
**Ken Salki Design, Inc.**  
303 S. Patterson, Suite One  
Madison, WI 53703

**KJ ENGINEERING CONSULTANTS**  
Experience you can build on™  
802 WEST BROADWAY, SUITE 312  
MADISON, WISCONSIN 53713-1830  
608.223.9000  
FAX: 608.223.9601  
www.kjew.com  
KJEW #10 0062.00  
KJEW ENGINEERING RESERVES PROPRIETARY RIGHTS, INCLUDING COPYRIGHT, TO THIS DRAWING AND THE DATA SHOWN THEREON. THIS DRAWING AND/OR DATA ARE THE EXCLUSIVE PROPERTY OF KJEW ENGINEERING AND SHALL NOT BE USED OR REPRODUCED FOR ANY OTHER PROJECT WITHOUT THE EXPRESS WRITTEN APPROVAL AND PARTICIPATION OF KJEW ENGINEERING. © 2019 KJEW, P.C.  
STRUCTURAL | MECHANICAL | ELECTRICAL | TECHNOLOGY

PROJECT NUMBER: 08126.00

DATE: September 9, 2019

REVISIONS:

SCALE: 1"=20'-0"

DRAWING NAME:

PHOTOMETRIC ANALYSIS - WEST PATIO AND LAKE PATH

DRAWING NUMBER:

E2.03



1

PHOTOMETRIC ANALYSIS - WEST PATIO AND LAKE PATH

SCALE: 1"=20'-0"



The Edgewater

666 Wisconsin Avenue  
Madison, WI 53703

Owner:  
**Landmark X, LLC**  
22 East Mifflin Street, Suite 800  
Madison, WI 53703

Developer:  
**Hammes Company**  
22 East Mifflin Street, Suite 800  
Madison, WI 53703

Civil Engineer:  
**BT<sup>2</sup>, Inc.**  
2830 Dairy Drive  
Madison, WI 53718

Landscape Architect:  
**Ken Salki Design, Inc.**  
303 S. Patterson, Suite One  
Madison, WI 53703

**KJWW ENGINEERING CONSULTANTS**  
Experience you can build on.<sup>SM</sup>  
802 WEST BROADWAY, SUITE 312  
MADISON, WISCONSIN 53713-1839  
608.223.9600  
FAX: 608.223.9601  
www.kjww.com  
KJWW #10.0002.00  
KJWW ENGINEERING CONSULTANTS ASSUMES RESPONSIBILITY FOR THE DESIGN AND THE DATA SHOWN HEREON. THIS DRAWING AND/OR DATA ARE THE EXCLUSIVE PROPERTY OF KJWW ENGINEERING AND SHALL NOT BE USED OR REPRODUCED FOR ANY OTHER PROJECT WITHOUT THE EXPRESS WRITTEN APPROVAL AND PARTICIPATION OF KJWW ENGINEERING © 2019 KJWW, P.C.  
STRUCTURAL | MECHANICAL | ELECTRICAL | TECHNOLOGY

PROJECT NUMBER: 06126.00

DATE: September 9, 2010

REVISIONS:

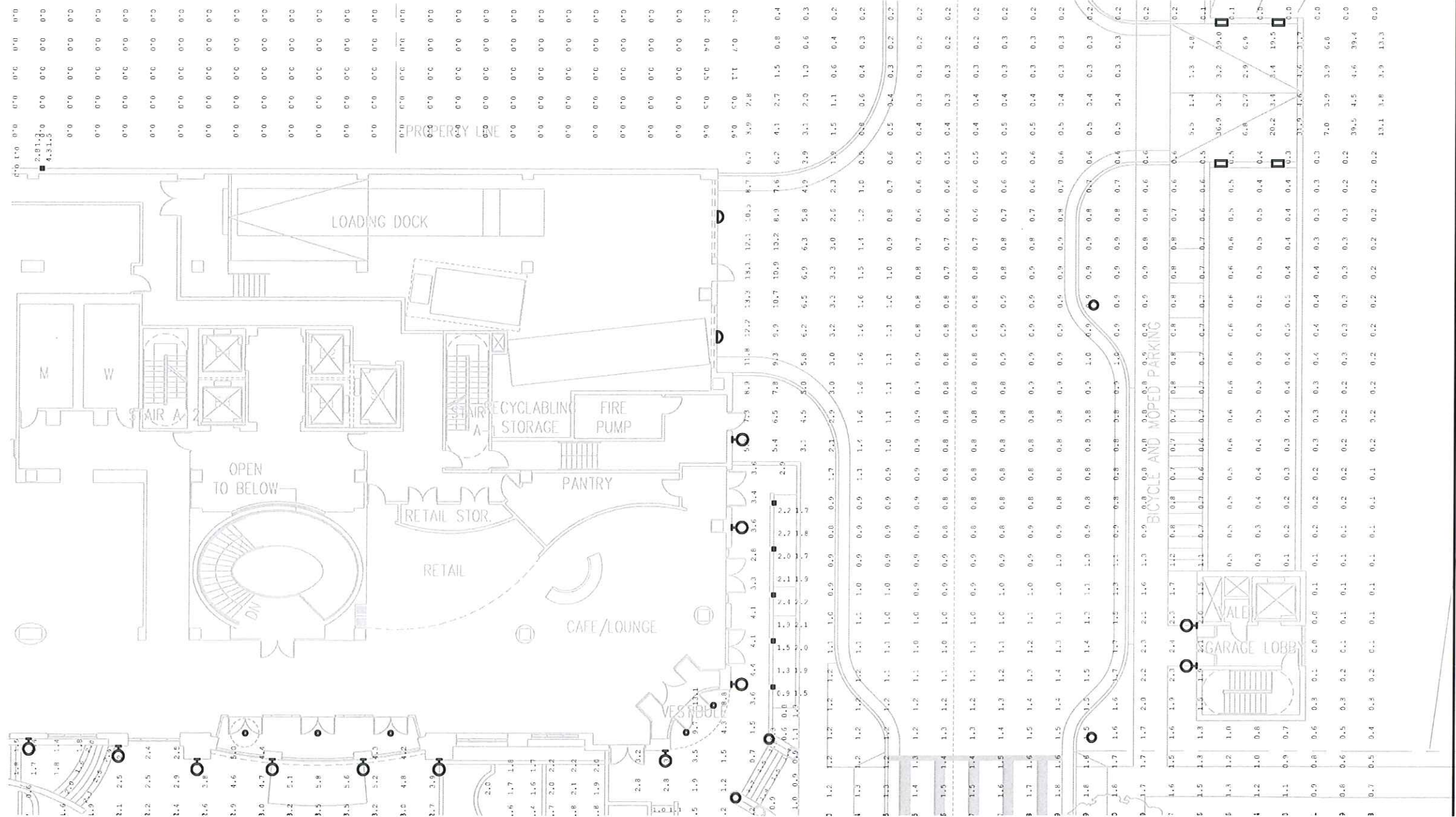
SCALE: 1"=20'-0"

DRAWING NAME:

PHOTOMETRIC ANALYSIS - EAST FACADE AND GARAGE ENTRY

DRAWING NUMBER:

E2.04



1

PHOTOMETRIC ANALYSIS - EAST FACADE AND GARAGE ENTRY

SCALE: 1"=20'-0"





The Edgewater

666 Wisconsin Avenue  
Madison, WI 53703

Owner:  
**Landmark X, LLC**  
22 East Mifflin Street, Suite 800  
Madison, WI 53703

Developer:  
**Hammes Company**  
22 East Mifflin Street, Suite 800  
Madison, WI 53703

Civil Engineer:  
**BT<sup>2</sup>, Inc.**  
2630 Dairy Drive  
Madison, WI 53718

Landscape Architect:  
**Ken Salki Design, Inc.**  
303 S. Patterson, Suite One  
Madison, WI 53703

**KJWW ENGINEERING CONSULTANTS**  
Experience you can build on.<sup>SM</sup>

802 WEST BROADWAY, SUITE 312  
MADISON, WISCONSIN 53713-1830  
808.223.9500  
FAX: 808.223.9501  
www.kjww.com  
KJWW #10.0002.00

KJWW ENGINEERING RESERVES PROPRIETARY RIGHTS INCLUDING COPYRIGHTS TO THIS DRAWING AND THE DATA FROM THIS DESIGN. THIS DRAWING AND/OR DATA ARE THE EXCLUSIVE PROPERTY OF KJWW ENGINEERING AND SHALL NOT BE USED OR REPRODUCED FOR ANY OTHER PROJECT WITHOUT THE EXPRESS WRITTEN APPROVAL AND PARTICIPATION OF KJWW ENGINEERING. © 2019 KJWW, P.C.

STRUCTURAL | MECHANICAL | ELECTRICAL | TECHNOLOGY

PROJECT NUMBER: 08126.00

DATE: September 9, 2010

REVISIONS:

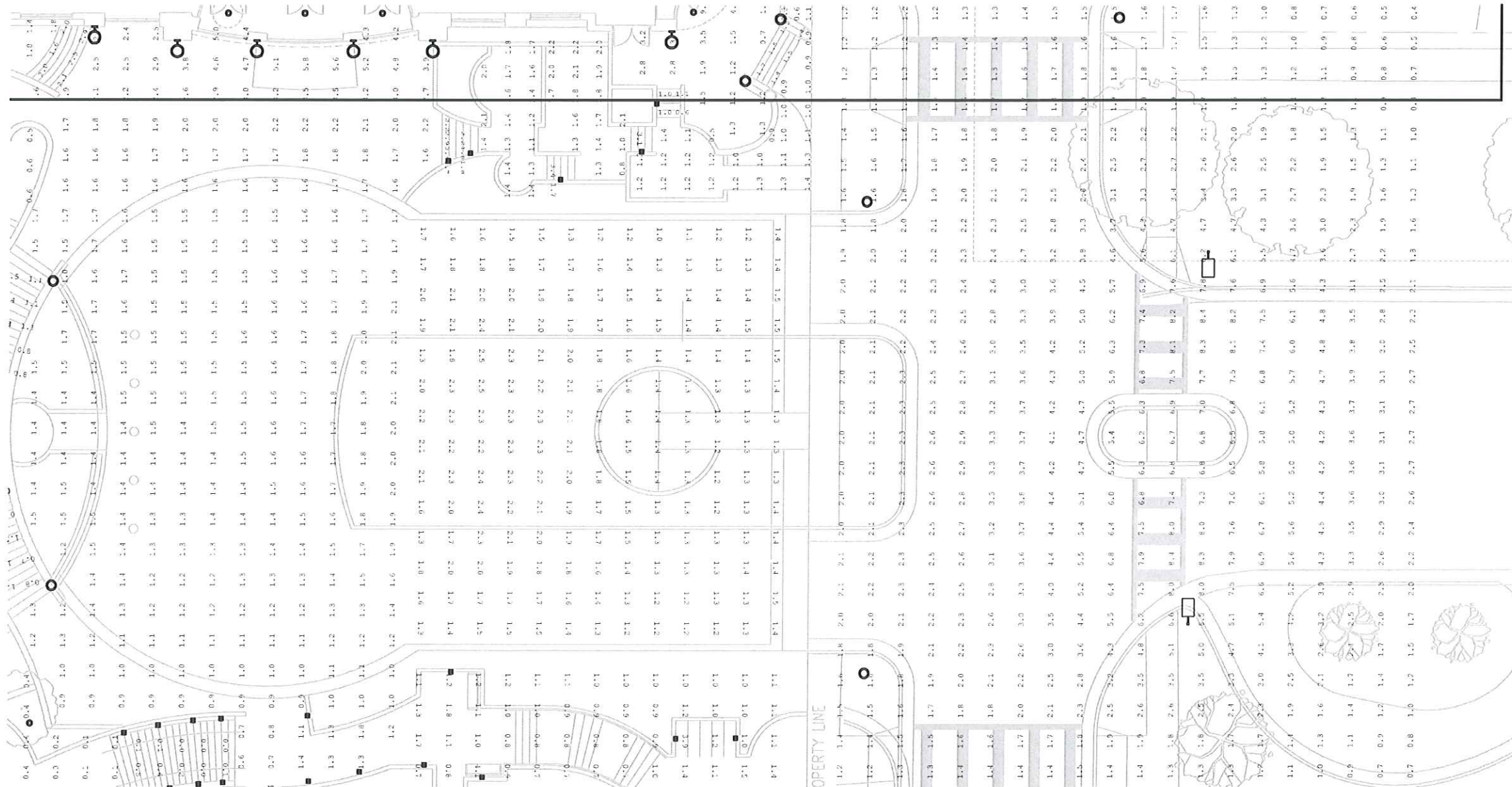
SCALE: 1"=20'-0"

DRAWING NAME:

PHOTOMETRIC ANALYSIS - MAIN ENTRY AND AUTO COURT

DRAWING NUMBER:

E2.05



1

PHOTOMETRIC ANALYSIS - MAIN ENTRY AND AUTO COURT

SCALE: 1"=20'-0"



The Edgewater

666 Wisconsin Avenue  
Madison, WI 53703

Owner:  
**Landmark X, LLC**  
22 East Millin Street, Suite 800  
Madison, WI 53703

Developer:  
**Hammes Company**  
22 East Millin Street, Suite 800  
Madison, WI 53703

Civil Engineer:  
**BT<sup>2</sup>, Inc.**  
2630 Dally Drive  
Madison, WI 53718

Landscape Architect:  
**Ken Salki Design, Inc.**  
303 S. Patterson, Suite One  
Madison, WI 53703

**KJWW ENGINEERING CONSULTANTS**  
Experience you can build on.<sup>SM</sup>

802 WEST BROADWAY, SUITE 312  
MADISON, WISCONSIN 53713-1839  
608.223.9500  
FAX: 608.223.8601  
www.kjww.com  
KJWW #10.0002.00

KJWW ENGINEERING RESERVE PROPRIETARY RIGHTS INCLUDING COPYRIGHTS, TO THIS DRAWING AND THE DATA FROM THIS DRAWING. THIS DRAWING AND THE DATA ARE THE EXCLUSIVE PROPERTY OF KJWW ENGINEERING AND SHALL NOT BE USED OR REPRODUCED FOR ANY OTHER PROJECT WITHOUT THE EXPRESS WRITTEN APPROVAL AND PARTICIPATION OF KJWW ENGINEERING. © 2010 KJWW, P.C.

STRUCTURAL | MECHANICAL | ELECTRICAL | TECHNOLOGY

PROJECT NUMBER: 08125.00

DATE: September 9, 2010

REVISIONS:

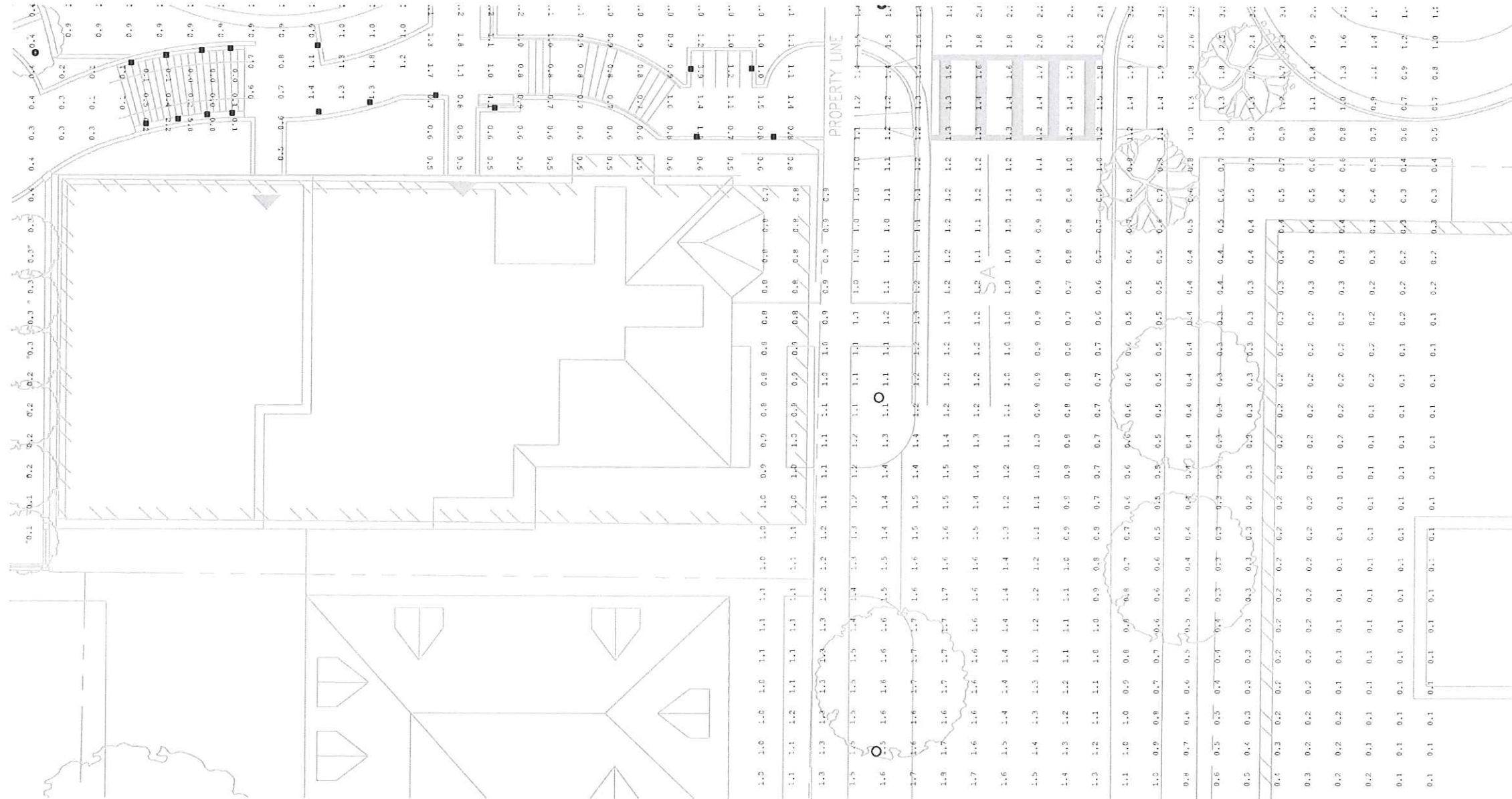
SCALE: 1"=20'-0"

DRAWING NAME:

PHOTOMETRIC ANALYSIS - MAIN STAIR EAST

DRAWING NUMBER:

E2.06



1

PHOTOMETRIC ANALYSIS - MAIN STAIR EAST

SCALE: 1"=20'-0"





The Edgewater

666 Wisconsin Avenue  
Madison, WI 53703

Owner:  
**Landmark X, LLC**  
22 East Millin Street, Suite 600  
Madison, WI 53703

Developer:  
**Hammes Company**  
22 East Millin Street, Suite 600  
Madison, WI 53703

Civil Engineer:  
**BT<sup>2</sup>, Inc.**  
2630 Dairy Drive  
Madison, WI 53718

Landscape Architect:  
**Ken Salki Design, Inc.**  
303 S. Patterson, Suite One  
Madison, WI 53703

**KJW ENGINEERING CONSULTANTS**  
Experience you can build on.<sup>™</sup>  
802 WEST BROADWAY, SUITE 312  
MADISON, WISCONSIN 53713-1839  
608.723.9600  
FAX: 608.253.9601  
www.kjw.com  
KJW #10.0062.00  
KJW ENGINEERING RESERVES PROPRIETARY RIGHTS.  
ALL RIGHTS RESERVED. THIS DRAWING AND THE DATA  
HEREON, INCLUDING THE DATA AND THE  
INCLUDING PROPERTY OF KJW ENGINEERING AND SHALL  
NOT BE USED OR REPRODUCED FOR ANY OTHER PROJECT  
WITHOUT THE EXPRESS WRITTEN APPROVAL AND  
PARTICIPATION OF KJW ENGINEERING. © 2010 KJW, P.C.  
STRUCTURAL | MECHANICAL | ELECTRICAL | TECHNOLOGY

PROJECT NUMBER: 06126.00

DATE: September 9, 2010

REVISIONS:

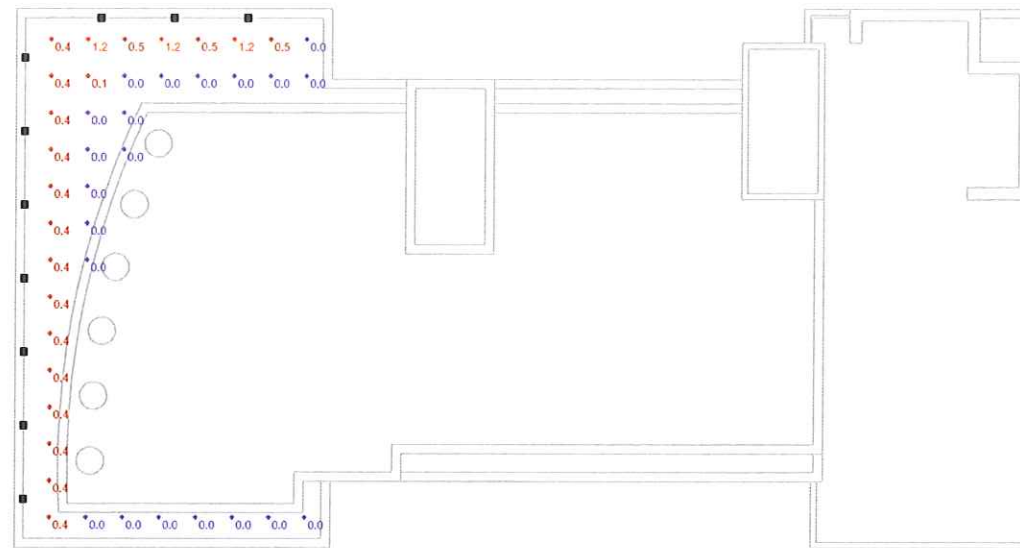
SCALE: 1" = 20'-0"

DRAWING NAME:

PHOTOMETRIC ANALYSIS - ROOF LEVEL

DRAWING NUMBER:

E2.09



1

PHOTOMETRIC ANALYSIS - EXISTING BUILDING ROOF

SCALE: 1"=20'-0"



2

PHOTOMETRIC ANALYSIS - NEW BUILDING ROOF

SCALE: 1"=20'-0"



The Edgewater

666 Wisconsin Avenue  
Madison, WI 53703

Owner:  
**Landmark X, LLC**  
22 East Millin Street, Suite 800  
Madison, WI 53703

Developer:  
**Hammes Company**  
22 East Millin Street, Suite 800  
Madison, WI 53703

Civil Engineer:  
**BT<sup>2</sup>, Inc.**  
2630 Dairy Drive  
Madison, WI 53718

Landscape Architect:  
**Ken Salki Design, Inc.**  
303 S. Patterson, Suite One  
Madison, WI 53703

**K J W W** ENGINEERING CONSULTANTS  
Experience you can build on™  
802 WEST BROADWAY, SUITE 312  
MADISON, WISCONSIN 53713-1839  
TEL: 608.233.9600  
FAX: 608.233.9601  
www.kjww.com  
KJWW #10.0062.00  
KJWW ENGINEERING RESERVES PROPRIETARY RIGHTS INCLUDING COPYRIGHTS TO THIS DRAWING AND THE DATA SHOWN THEREON. THIS DRAWING AND THE DATA ARE THE EXCLUSIVE PROPERTY OF KJWW ENGINEERING AND SHALL NOT BE USED OR REPRODUCED FOR ANY OTHER PROJECT WITHOUT THE EXPRESS WRITTEN APPROVAL AND PARTICIPATION OF KJWW ENGINEERING. © 2010 KJWW, P.C.  
STRUCTURAL | MECHANICAL | ELECTRICAL | TECHNOLOGY

PROJECT NUMBER: 08126.00

DATE: September 9, 2010

REVISIONS:

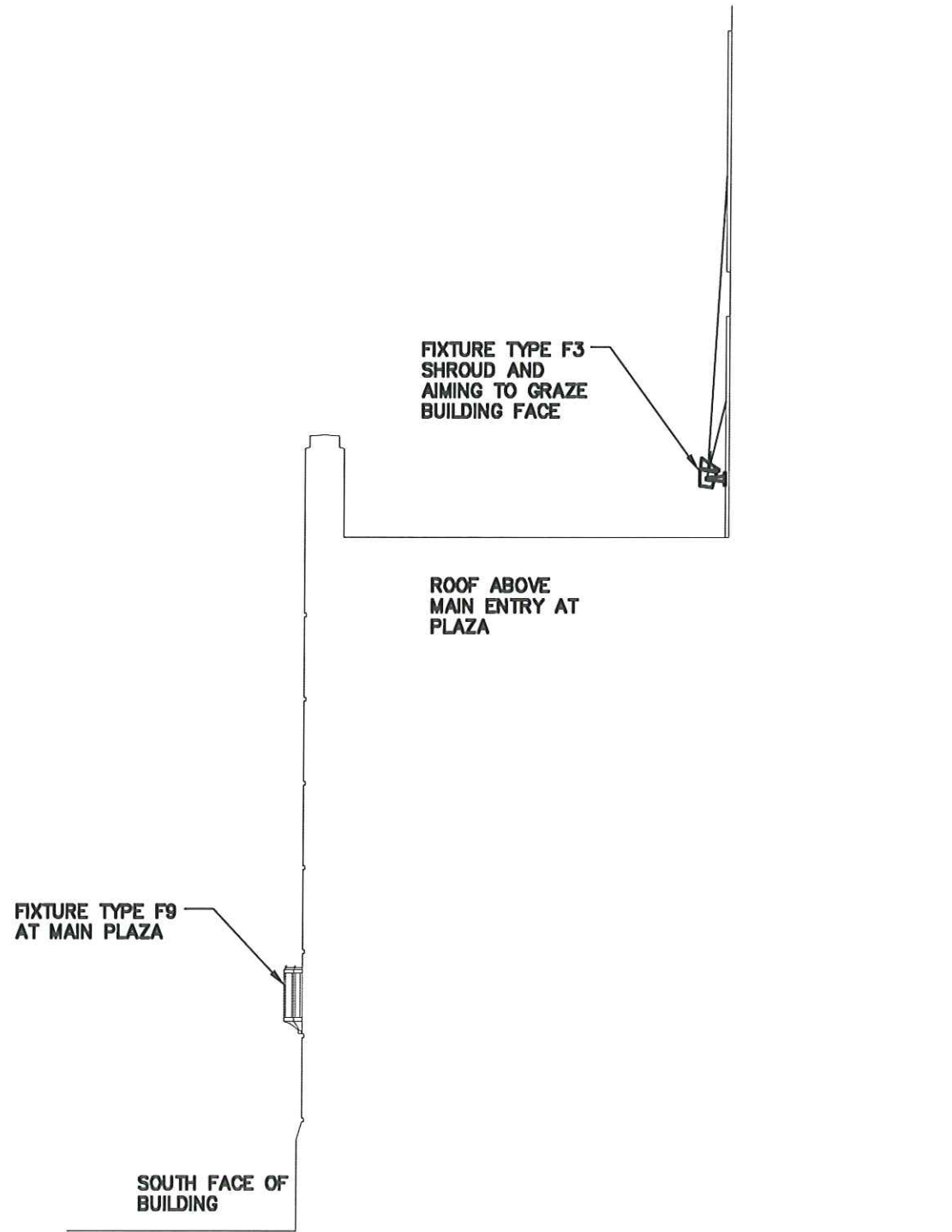
SCALE:

DRAWING NAME:

MOUNTING DETAILS

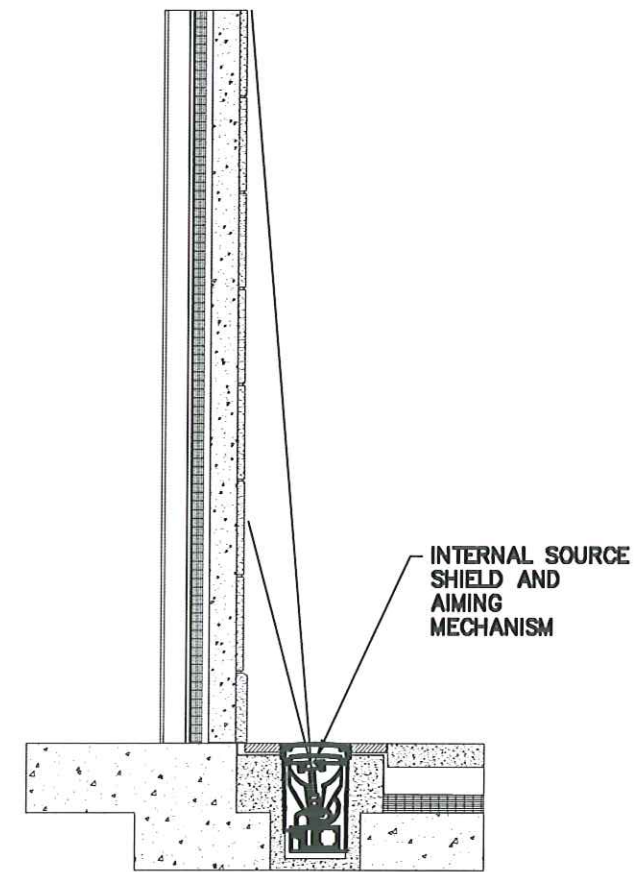
DRAWING NUMBER:

**E4.00**



**F3 AND F5 MOUNTING DETAIL  
AT PARAPIT WALL**

**1** SCALE: 3/16" = 1'-0"



**F6 AND F7 MOUNTING  
WHERE PLAZA MEETS BUILDING**

**2** SCALE: 3/8" = 1'-0"



### The Edgewater

666 Wisconsin Avenue  
Madison, WI 53703

Owner:  
**Landmark X, LLC**  
22 East Millin Street, Suite 800  
Madison, WI 53703

Developer:  
**Hammes Company**  
22 East Millin Street, Suite 800  
Madison, WI 53703

Civil Engineer:  
**BT<sup>2</sup>, Inc.**  
2630 Dairy Drive  
Madison, WI 53718

Landscape Architect:  
**Ken Salki Design, Inc.**  
303 S. Patterson, Suite One  
Madison, WI 53703

**KJ ENGINEERING CONSULTANTS**  
Experience you can build on.<sup>SM</sup>  
802 WEST BROADWAY, SUITE 312  
MADISON, WISCONSIN 53713-1839  
608.223.9600  
FAX: 608.223.9601  
www.kjew.com  
KJEW #10.0062.00  
KJEW ENGINEERING RECEIVES PROPRIETARY RIGHTS  
INCLUDING COPYRIGHTS, TO THIS DRAWING AND THE DATA  
SHOWN THEREON. THIS DRAWING AND/OR DATA ARE THE  
EXCLUSIVE PROPERTY OF KJEW ENGINEERING AND SHALL  
NOT BE USED OR REPRODUCED FOR ANY OTHER PROJECT  
WITHOUT THE EXPRESS WRITTEN APPROVAL AND  
PARTICIPATION OF KJEW ENGINEERING. © 2010 KJEW, P.C.  
STRUCTURAL | MECHANICAL | ELECTRICAL | TECHNOLOGY

PROJECT NUMBER: 08106.00

DATE: September 9, 2010

REVISIONS:

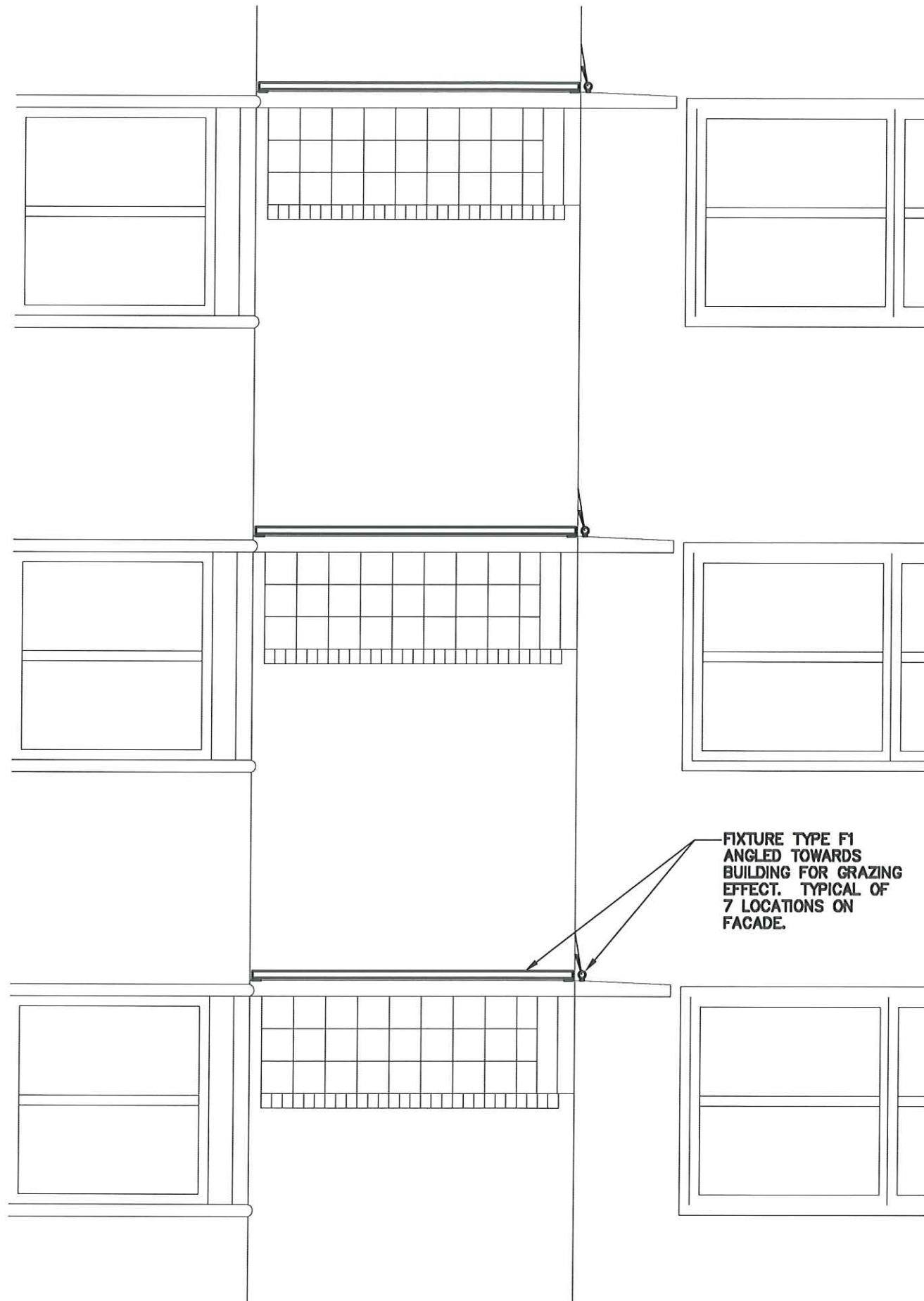
SCALE:

DRAWING NAME:

MOUNTING DETAILS

DRAWING NUMBER:

# E4.01



1

## 1940'S TOWER F1 MOUNTING DETAIL

SCALE: 3/8" = 1'-0"

## LUMINAIRE SCHEDULE

MOUNTING: (MTG)		LAMP TYPE:		LENS/LOUVER: (L/L)	
RE - RECESSED		FL - FLUORESCENT		A - .125" ACRYLIC	
SP - SUSPENDED		CF - COMPACT FLUORESCENT		B - BLACK BAFFLE	
CL - CEILING SURFACE		HL - HALOGEN		C - CLEAR ALZAK	
WL - WALL		IN - INCANDESCENT		D - PARABOLIC	
UC - UNDER CABINET		LED - LIGHT EMITTING DIODE		F - FRESNEL	
CV - COVE		HS - HIGH PRESSURE SODIUM		G - TEMPERED GLASS	
PL - POLE		MH - METAL HALIDE		H - WALL WASHER	
O - OTHER (SEE DESCRIPTION)		SMH - SUPER METAL HALIDE		P - POLYCARBONATE	
		PSMH - PULSE START METAL HALIDE		K - KSH12 .125" ACRYLIC	
		CMH - CERAMIC METAL HALIDE		K19 - KSH19 .156" ACRYLIC	
		O - OTHER (SEE DESCRIPTION)		L - LOW IRIDESCENT SPECULAR ALUM.	
		XL - EXTENDED LIFE		N - NONE	
		XLP - EXTENDED LIFE & OUTPUT		R - HIGH IMPACT DR ACRYLIC	
				O - OTHER (SEE DESCRIPTION)	
DOOR:		BALLAST: (BLS)		##BF - BALLAST FACTOR	
FA - FLAT ALUMINUM		DIM - DIMMING BALLAST		HL - HIGH / LOW LEVEL BALLAST	
FS - FLAT STEEL		EB - ELECTRONIC BALLAST		HP - HIGH PERFORMANCE-LOW BALL. FACTOR	
RA - REGRESSED ALUMINUM		EM - EMERGENCY BATTERY/BALLAST		ML - MULTI-LEVEL SWITCHING	
RS - REGRESSED STEEL		DALI - DIGITAL DIMMING BALLAST		MV - MULTI-VOLTAGE ELECTRONIC	
FINISH:		PAF - PAINT AFTER FABRICATION		CSA - FINISH SELECTION BY ARCHITECT	

ITEM	DESCRIPTION	SIZE	MTG	LAMPS		VOLTS / BLS	L/L	APPROVED MANUFACTURER
				TYPE	QUANTITY & SIZE			
F1	WET LOCATION STANDARD OUTPUT WHITE LIGHT LINEAR LED WITH 10 DEGREE DISTRIBUTION. LENGTHS AND END FEED REQUIREMENTS TO BE DETERMINED. REFER TO MATERIAL LIST FOR REMOTE DRIVER INFORMATION.	1.7" DIA 18.25" L	O	LED	3 WATTS PER LINEAR FOOT 68 LUMENS PER FOOT 76 CRI 3000K	24V	O	IO LIGHTING 1.5 0-10-E-3K-10-100-1-18.25"- FEED-VOLTAGE
F2	ADJUSTABLE DOWNLIGHT.		RE/ CL	HL	1 37 WATT 37MR16/IR/ NFL	277V	O	GOTHAM DLV4-ADJ
F3	WET LOCATION YOKE MOUNTED SPOTLIGHT, 8 DEGREE DISTRIBUTION. PROVIDE WITH FULL HEIGHT GLARE SHIELD.	6.4" DIA 10.8"H	O	LED	30 WATTS LUMENS 80 CRI 3000K	100V-277V	O	COLOR KINETICS eW BURST 523-000036-02 120-000103-02
F4A	STAKE MOUNT REAR SWIVEL LOW LEVEL LANDSCAPE SPOTLIGHT, SPOT (3 DEGREE) DISTRIBUTION. COLOR TO BE DETERMINED. REFER TO MATERIAL LIST FOR REMOTE DRIVER INFORMATION.	2.3" DIA 5.5"L	O	LED	12 WATT LUMENS CRI 3000K	12V	O	LUMIERE CAMBRIA 203 LED 203-CRS-12WLEDS
F4B	STAKE MOUNT REAR SWIVEL LOW LEVEL LANDSCAPE SPOTLIGHT, NARROW (20 DEGREE) DISTRIBUTION. COLOR TO BE DETERMINED. REFER TO MATERIAL LIST FOR REMOTE DRIVER INFORMATION.	2.3" DIA 5.5"L	O	LED	12 WATT LUMENS CRI 3000K	12V	O	LUMIERE CAMBRIA 203 LED 203-CRS-12WLEDN
F4C	STAKE MOUNT REAR SWIVEL LOW LEVEL LANDSCAPE SPOTLIGHT, WIDE (36 DEGREE) DISTRIBUTION. COLOR TO BE DETERMINED. REFER TO MATERIAL LIST FOR REMOTE DRIVER INFORMATION.	2.3" DIA 5.5"L	O	LED	12 WATT LUMENS CRI 3000K	12V	O	LUMIERE CAMBRIA 203 LED 203-CRS-12WLEDW
F5	WET LOCATION YOKE MOUNTED LIGHT, LINEAR GRAZE DISTRIBUTION. PROVIDE WITH 45 DEGREE GLARE SHIELD.	6.4" DIA 10.8"H	O	LED	30 WATTS LUMENS 80 CRI 3000K	100V-277V	O	COLOR KINETICS eW BURST 523-000036-02 120-000103-01 120-000080-03
F6	WET LOCATION IN-GRADE UPLIGHT, DOUBLE LENSED, INTERNAL SOURCE SHIELD, WITH NARROW SPOT DISTRIBUTION. PROVIDE WITH SLIP RESISTANT LENS. FINISH TO BE DETERMINED.	13" DIA 20" DEEP	O	PSMH	1 70 WATT MC70T6/U/ G12/830	277V EB	O	HYDREL M9720SS-70CMT6-277-NSP- FLCAS-CONDUIT ENTRY-ISS- GEB-FINISH
F7	WET LOCATION IN-GRADE UPLIGHT, WITH NARROW SPOT DISTRIBUTION, ROUND STRAIGHT EDGE TRIM. PROVIDE WITH SLIP RESISTANT LENS. FINISH TO BE DETERMINED.	5.8" DIA 10.2"H	O	PSMH	1 20 WATT CMH20MR16 12 DEGREE	277V EB	O	TARGETTI PHENIX PHE-1/20W/CMH/MR16/GX10 277/12V/STSTEEL/STRAIGHT

## LUMINAIRE SCHEDULE CONTINUED

ITEM	DESCRIPTION	SIZE	MTG	LAMPS		VOLTS / BLS	L/L	APPROVED MANUFACTURER
				TYPE	QUANTITY & SIZE			
F8A	PEDESTRIAN POLE, TYPE V DISTRIBUTION, SEMI-CUTOFF. FINISHES AND DECORATIVE OPTIONS TO MATCH CITY OF MADISON STANDARD PEDESTRIAN POLE SPECIFICATIONS.	18" DIA 36.5"H	PL	PSMH	1 150 WATT MP150/U/MED	277V EB	O	ANTIQUE STREET LAMPS AM30 SERIES
F8B	PEDESTRIAN POLE, TYPE III DISTRIBUTION, SEMI-CUTOFF. FINISHES AND DECORATIVE OPTIONS TO MATCH CITY OF MADISON STANDARD PEDESTRIAN POLE SPECIFICATIONS.	18" DIA 36.5"H	PL	PSMH	1 150 WATT MP150/U/MED	277V EB	O	ANTIQUE STREET LAMPS AM30 SERIES
F9	EXTERIOR RATED DECORATIVE SCONCE. GLASS SELECTION AND FINISH TO BE DETERMINED.	36"H 12"W 6.5"EXT	WL	FL	2 14 WATT FP14T5	277V EB	O	CRENSHAW LIGHTING LANTERN 3272-1
F10	CAST IN PLACE IN-WALL LOUVERED STEPLIGHTS.	9.5"W 3.5"H 0.8"EXT	RE/ WL	LED	15 WATTS 3500K	277V	O	KIM LIGHTING EL807-15LED277DB
F11	STAKE MOUNTED LOW LEVEL EXTERIOR PATH LIGHT.	20"H 16.5" DIA	O	LED	5 WATTS 3500K	12V	O	KIM LIGHTING KLV197-5LED12-NB-H70
F12	FULL CUTOFF HALF CYLINDER SCONCE.	18"W 9" EXT 7"H	WL	PSMH	1 100 WATT MPC100U/ MED	277V	O	GARDCO 104
F13	WET LOCATION YOKE MOUNTED AREA LIGHT, 40 DEGREE DISTRIBUTION. PROVIDE WITH 45 DEGREE GLARE SHIELD.	6.4" DIA 10.8"H	O	LED	30 WATTS LUMENS 80 CRI 3000K	100V-277V	O	COLOR KINETICS eW BURST 523-000036-02 120-000103-01 120-000080-02
F14	EXTERIOR RATED PIER MOUNTED DECORATIVE FIXTURE. GLASS SELECTION AND FINISH TO BE DETERMINED.	18"H 9"SQ	O	CF	2 26 WATT CFTR32W/ GX24Q	277V	O	CRENSHAW LIGHTING LANTERN 3272-2 MODIFIED SIZE
F15	EXTERIOR RATED DECORATIVE SCONCE. GLASS SELECTION AND FINISH TO BE DETERMINED.	18"H 9"W 6.5"EXT	WL	CF	2 26 WATT CFTR32W/ GX24Q	277V	O	CRENSHAW LIGHTING LANTERN 3272-1 MODIFIED SIZE
F16	WALL MOUNTED UP/DOWN CYLINDER, 20 DEGREE BEAM SPREAD. FINISH TO BE DETERMINED.	9.2"H 4.5"EXT 2.3" DIA	WL	LED	2 12 WATT LUMENS CRI 3000K	12V	O	LUMIERE WESTWOOD 904-UD-12WLEDN
F17	EXTERIOR RATED DECORATIVE SCONCE. GLASS SELECTION AND FINISH TO BE DETERMINED.	12"H 8"W 6"EXT	WL	CF	1 26 WATT CFTR32W/ GX24Q	277V	O	CRENSHAW LIGHTING LANTERN 3272-1 MODIFIED SIZE
F18	LARGER CAST-IN-PLACE WALL SCOOP.	10"SQ 5.5" DEEP	RE/ WL	PSMH	1 50 WATT MPC50U/MED	277V	O	GARDCO 946 SQUARE
F19	WET LOCATION ADJUSTABLE WALL MOUNTED NARROW SPOTLIGHT. PROVIDE WITH FULL GLARE SHIELD AND INTERNAL SOURCE SHIELD.	10"W 15" EXT 8"H	WL	PSMH	1 140 WATT PHILIPS COSMOPOLIS	277V EB	O	HYDREL 8100-140CPO-277-SP- AWMDE

ELKUS | MANFREDI  
ARCHITECTS

[Address] 300 A STREET  
BOSTON MASSACHUSETTS 02210  
[Phone] 617-426-1300

## The Edgewater

666 Wisconsin Avenue  
Madison, WI 53703

Owner:

**Landmark X, LLC**  
22 East Millin Street, Suite 800  
Madison, WI 53703

Developer:

**Hammes Company**  
22 East Millin Street, Suite 800  
Madison, WI 53703

Civil Engineer:

**BT<sup>2</sup>, Inc.**  
2630 Dairy Drive  
Madison, WI 53718

Landscape Architect:

**Ken Salki Design, Inc.**  
303 S. Patterson, Suite One  
Madison, WI 53703

**KJW ENGINEERING CONSULTANTS**  
Experience you can build on.<sup>SM</sup>  
802 WEST BROADWAY, SUITE 312  
MADISON, WISCONSIN 53713-1639  
608.223.9000  
FAX: 608.223.9601  
www.kjw.com  
KJW #10.0002.00

KJW ENGINEERING RESERVES PROPRIETARY RIGHTS. REVISIONS, TO THE DRAWING AND THE DATA FROM WHICH THIS DRAWING AND DATA ARE THE EXCLUSIVE PROPERTY OF KJW ENGINEERING AND SHALL NOT BE USED OR REPRODUCED FOR ANY OTHER PROJECT WITHOUT THE EXPRESS WRITTEN APPROVAL AND PARTICIPATION OF KJW ENGINEERING. © 2010 KJW, P.C.

PROJECT NUMBER: 08106.00

DATE: September 9, 2010

REVISIONS:

SCALE:

DRAWING NAME:

LUMINAIRE SCHEDULE

DRAWING NUMBER:

# E5.00



EXTERIOR LIGHTING CONTROL INTENT

LUMINAIRE TYPE	DESCRIPTION	DIMMED OR SWITCHED	OPERATION SCHEDULE
F1	NARROW LINEAR GRAZER FOR 1940S TOWER FA?ADE	DIMMED	DUSK TO 10PM AT 80% 11PM-DAYLIGHT AT 50% OFF DURING DAYLIGHT HOURS
F2	ADJUSTABLE DOWNLIGHT AT MAIN ENTRIES	DIMMED	DUSK TO 10PM AT 100% 11PM-4AM AT 60% 4AM-DAYLIGHT AT 80% OFF DURING DAYLIGHT HOURS
F3	BUILDING FA?ADE UPLIGHT	DIMMED	DUSK TO 10PM AT 80% 11PM-DAYLIGHT AT 40% OFF DURING DAYLIGHT HOURS
F4 SERIES	TREE UPLIGHTS AND LANDSCAPE ACCENT LIGHTING	SWITCHED	PHOTOCELL ON/OFF, SWITCHABLE FOR SPECIAL ACTIVITIES
F5	BUILDING FA?ADE WASH	DIMMED	DUSK TO 10PM AT 80% 11PM-DAYLIGHT AT 40% OFF DURING DAYLIGHT HOURS
F6	IN GRADE NARROW SPOT ADJUSTABLE UPLIGHT (70 WATT)	SWITCHED	DUSK TO 12PM OFF AFTER 12PM AND DURING DAYLIGHT HOURS
F7	IN GRADE NARROW SPOT ADJUSTABLE UPLIGHT (20 WATT)	SWITCHED	DUSK TO 12PM OFF AFTER 12PM AND DURING DAYLIGHT HOURS  OPERATIONAL DURING ACTIVITIES ON PLAZA REQUIRING MID-LEVEL ILLUMINATION.
F8A	PEDESTRIAN POLES WITHIN PLAZA	SWITCHED	PHOTOCELL ON/OFF
F8A	PEDESTRIAN POLES AT AUTO COURT	SWITCHED	PHOTOCELL ON/OFF
F8B	PEDESTRIAN POLES AT LANGDON STREET	SWITCHED	PHOTOCELL ON/OFF
F9	DECORATIVE SCONCE	SWITCHED	PHOTOCELL ON/OFF
F10	LOW LEVEL STEPLIGHTS	SWITCHED	PHOTOCELL ON/OFF, SWITCHABLE PER AREA FOR SPECIAL ACTIVITIES
F11	LOW LEVEL PATH LIGHTS	SWITCHED	PHOTOCELL ON/OFF, SWITCHABLE PER AREA FOR SPECIAL ACTIVITIES
F12	LOADING DOCK AREA LIGHTING	SWITCHED	PHOTOCELL ON/OFF
F13	AREA LIGHTING FOR ICE SKATING	DIMMED	DIMMABLE TO ACHIEVE NECESSARY LIGHT LEVELS DURING SPECIAL EVENTS
F13	AREA LIGHTING FOR EVENTS AT 1940S COURTYARD	DIMMED	DIMMABLE TO ACHIEVE NECESSARY LIGHT LEVELS DURING SPECIAL EVENTS
F14	PIER MOUNT DECORATIVE FIXTURE	SWITCHED	PHOTOCELL ON/OFF, SWITCHABLE FOR SPECIAL ACTIVITIES
F15	DECORATIVE SCONCE	SWITCHED	PHOTOCELL ON/OFF
F16	UP/DOWN CYLINDER AT RIGADOON FA?ADE	DIMMED	DUSK TO 10PM AT 100% 11PM-4AM AT 60% 4AM-DAYLIGHT AT 80% OFF DURING DAYLIGHT HOURS
F17	DECORATIVE SCONCE	SWITCHED	PHOTOCELL ON/OFF
F18	GARAGE DRIVE ENTRY IN-WALL SCOOP	SWITCHED	PHOTOCELL ON/OFF
F19	LAKE FA?ADE UPLIGHT	SWITCHED	DUSK TO 12PM OFF AFTER 12PM AND DURING DAYLIGHT HOURS

ELKUS | MANFREDI ARCHITECTS

[Address] 300 A STREET  
BOSTON MASSACHUSETTS 02210  
[Phone] 617-426-1300

The Edgewater

666 Wisconsin Avenue  
Madison, WI 53703

Owner:  
**Landmark X, LLC**  
22 East Millin Street, Suite 600  
Madison, WI 53703

Developer:  
**Hammes Company**  
22 East Millin Street, Suite 600  
Madison, WI 53703

Civil Engineer:  
**BT<sup>2</sup>, Inc.**  
2830 Dairy Drive  
Madison, WI 53718

Landscape Architect:  
**Ken Salki Design, Inc.**  
303 S. Patterson, Suite One  
Madison, WI 53703

**KJW ENGINEERING CONSULTANTS**  
Experience you can build on™  
802 WEST BROADWAY, SUITE 312  
MADISON, WISCONSIN 53713-1839  
608.223.9600  
FAX: 608.223.9601  
www.kjw.com  
KJW #10 0062.00

KJW ENGINEERING RESERVES PROPRIETARY RIGHTS. INCLUDING COPYRIGHTS, TO THIS DRAWING AND THE DATA SHOWN THEREON. THIS DRAWING AND/OR DATA ARE THE EXCLUSIVE PROPERTY OF KJW ENGINEERING AND SHALL NOT BE USED OR REPRODUCED FOR ANY OTHER PROJECT WITHOUT THE EXPRESS WRITTEN APPROVAL AND PARTICIPATION OF KJW ENGINEERING. ©2010 KJW, P.C. STRUCTURAL | MECHANICAL | ELECTRICAL | TECHNOLOGY

PROJECT NUMBER: 08125.00

DATE: September 9, 2010

REVISIONS:

SCALE:

DRAWING NAME:

EXTERIOR LIGHTING CONTROL

DRAWING NUMBER:

E6.00