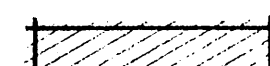
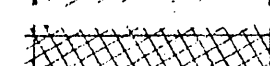
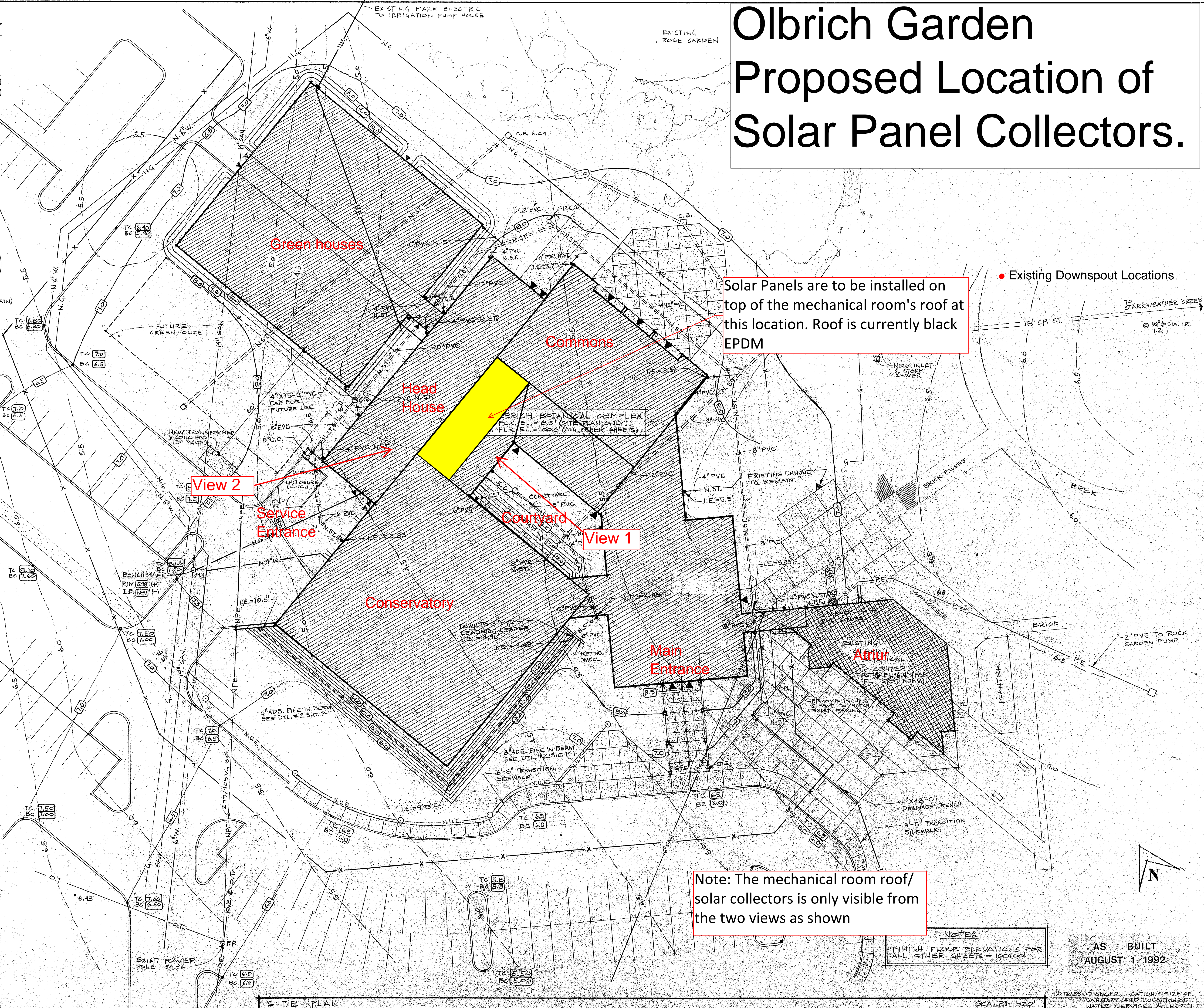


# Olbrich Garden Proposed Location of Solar Panel Collectors.

## SITE PLAN LEGEND:

-  NEW BOTANICAL COMPLEX
-  EXISTING BUILDINGS (TO REMAIN)
- 0.375" I.R. 3/4" DIA. IRON ROD
- X CONSTRUCTION LIMITS
- 6" CURB
- LOPP PARKING LOT LIGHT/POWER POLE
- PL. PLANTER
- O.M.H. MANHOLE
- 5.33 FINISH CONTOUR GRADE ELEVATION
- 5.0 EXIST. CONTOURS TO BE ALTERED
- 7.0 TC TOP OF NEW CURB
- 6.5 BC BOTTOM OF NEW CURB
- 9 EXIST. GAS (M.G.E.) (TO REMAIN)
- N.G. NEW GAS (M.G.E.)
- P.G. EXIST. PARK GAS (TO REMAIN)
- N.P.G. NEW PARK GAS
- N.O.E. NEW OVERHEAD ELECTRIC (M.G.E.)
- O.E. EXIST. OVERHEAD ELECTRIC (M.G.E.) (TO REMAIN)
- E. EXIST. ELECTRIC (M.G.E.) (TO REMAIN)
- N.E. NEW ELECTRIC (M.G.E.)
- P.E. EXIST. PARK ELECTRIC (TO REMAIN)
- N.P.E. NEW PARK ELECTRIC
- N.U.E. NEW UNDERGROUND ELECTRIC (M.G.E.)
- N.O.P.E. NEW OVERHEAD PARK ELECTRIC
- O.T. EXIST. OVERHEAD TELEPHONE (WIS. BELL) (TO REMAIN)
- N.O.T. NEW OVERHEAD TELEPHONE (WIS. BELL)
- T. EXIST. TELEPHONE (WIS. BELL) (TO REMAIN)
- N.T. NEW TELEPHONE (WIS. BELL)
- SAN. EXIST. SANITARY (TO REMAIN)
- N.SAN. NEW SANITARY
- ST. EXIST. LARGE DIA. STORM (TO REMAIN)
- N.ST. NEW LARGE DIA. STORM
- ST. EXIST. SMALL DIA. STORM (TO REMAIN)
- N.ST. NEW SMALL DIA. STORM
- W. EXIST. WATER (TO REMAIN)
- N.W. NEW WATER
- Δ V. WATER VALVE BOX
- C.O. CLEANOUT
- C.B. EXISTING CATCH BASIN
- C.B. NEW CATCH BASIN



Solar Panels are to be installed on top of the mechanical room's roof at this location. Roof is currently black EPDM

• Existing Downspout Locations

View 2

Service Entrance

View 1

Courtyard

Main Entrance

Note: The mechanical room roof/solar collectors is only visible from the two views as shown

NOTE:  
FINISH FLOOR ELEVATIONS FOR ALL OTHER SHEETS = 100.00

AS BUILT  
AUGUST 1, 1992

SITE PLAN

SCALE: 1"=20'

12-12-88: CHANGED LOCATION & SIZE OF SANITARY AND LOCATION OF WATER SERVICES AS SHOWN SIDE OF CONSERVATORY  
11-18-88

STUART WILLIAM GALLAHER, ARCHITECT, INC. MADISON, WISCONSIN  
707 NORTH BLACKHAWK AVENUE  
OLBRICH BOTANICAL COMPLEX  
SITING PLAN - SITE PLAN LEGEND



View 1 from the courtyard before solar panel installation. Note unsightly roof top equipment.



View 1 as seen from the courtyard after solar panel installation. Panel will hide the existing roof top equipment.



View 2. As seen from the north parking lot/employees entrance. Roof top equipment will be somewhat concealed by the shadow of the solar panels.