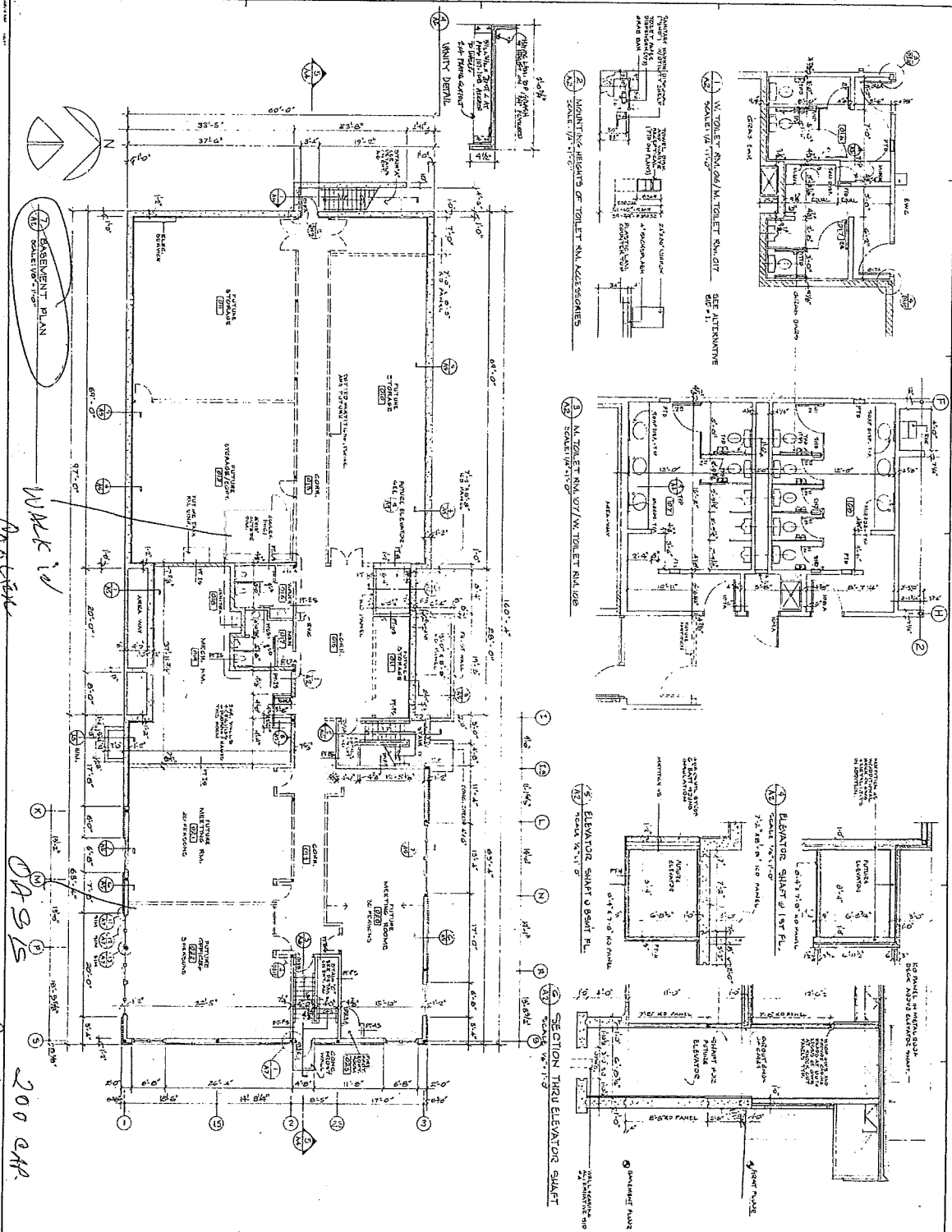


LOWER LEVEL

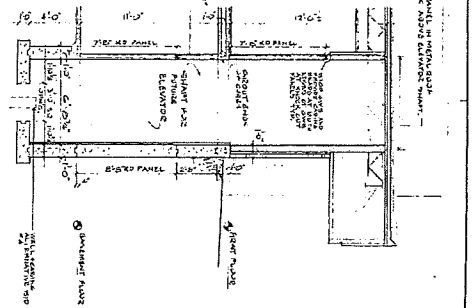
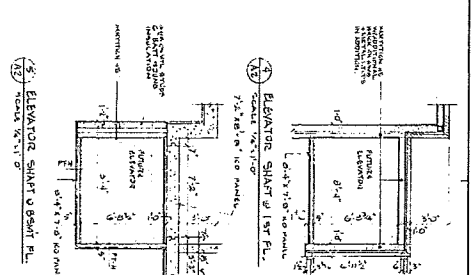
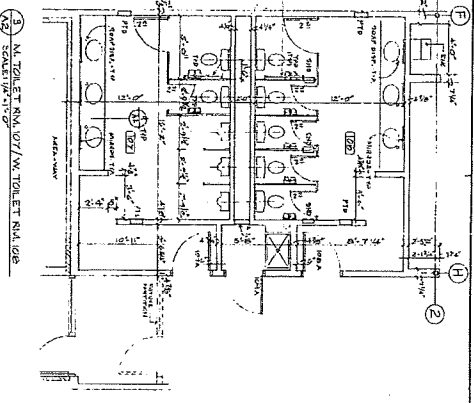
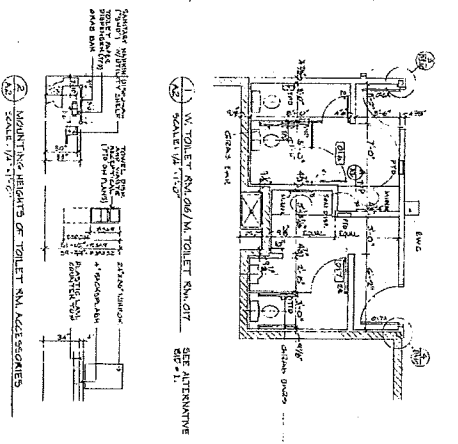


BASEMENT PLAN
CONSTRUCTIVE

WALK ID
DRIVER

MEETING ROOM

200 GAR



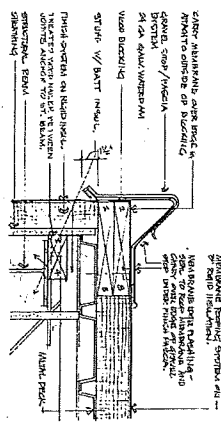
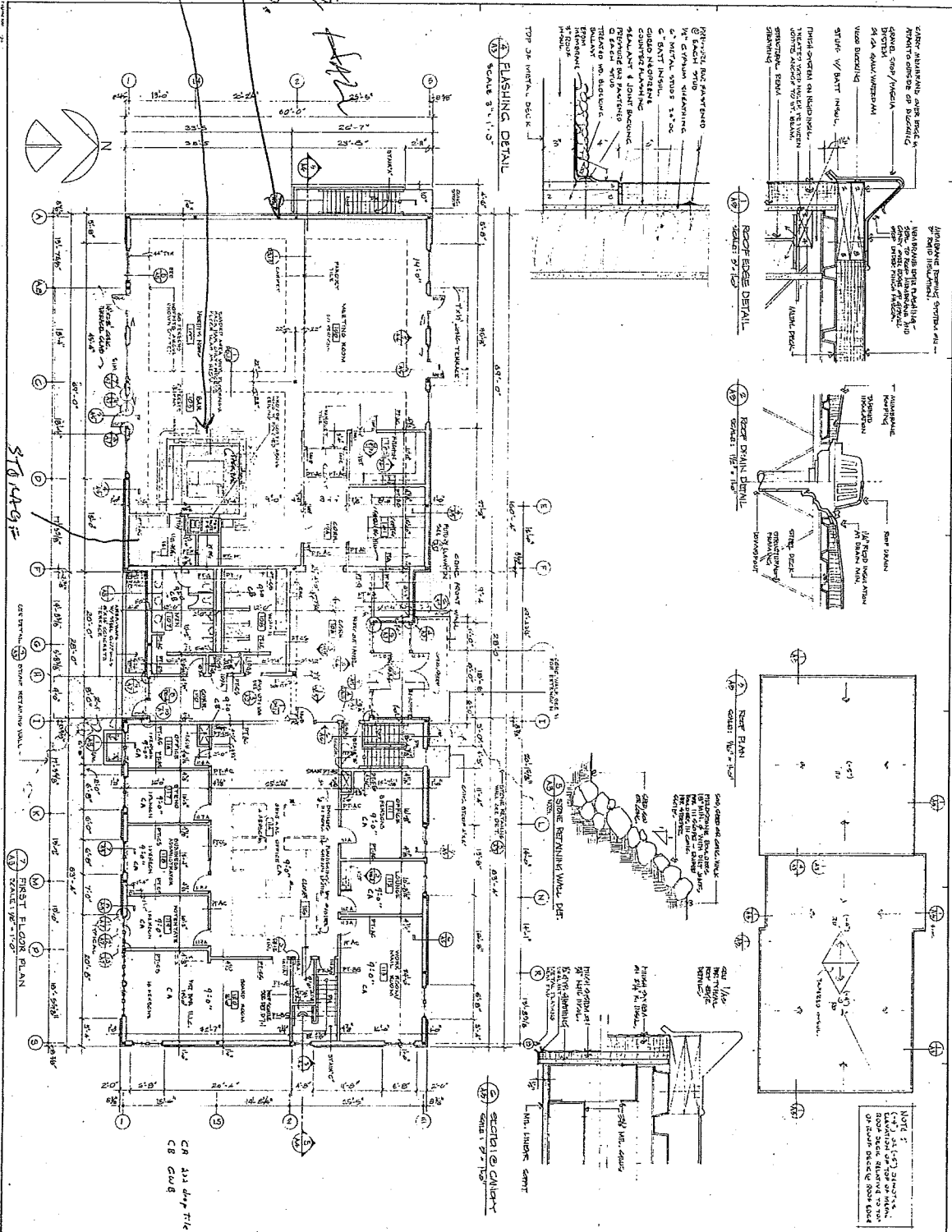
<p>Project Title</p> <p>2018 SPRING TEMPLE</p> <p>Basement Floor Plan Toilet Plans & Details</p> <p>Project No. 18-010 Sheet No. 18-010-10</p> <p>AS2</p>	<p>Client</p> <p>Peter Larson of Pawlowsky Inc.</p> <p>Address</p> <p>1700 W. 12th St.</p> <p>Minneapolis, MN 55404</p> <p>Architect</p> <p>James H. Larson</p> <p>Plumber</p> <p>James H. Larson</p>	<p>Scale</p> <p>1/4" = 1'-0"</p>
		<p>Notes</p> <p>1. Provide all work in complete accordance with Division 22, plumbing, and Division 23, mechanical, including all materials and fixtures. See alternate 22.01 for plumbing fixtures and alternate 23.01 for mechanical fixtures. See alternate 22.02 for plumbing fixtures and alternate 23.02 for mechanical fixtures. See alternate 22.03 for plumbing fixtures and alternate 23.03 for mechanical fixtures. See alternate 22.04 for plumbing fixtures and alternate 23.04 for mechanical fixtures. See alternate 22.05 for plumbing fixtures and alternate 23.05 for mechanical fixtures. See alternate 22.06 for plumbing fixtures and alternate 23.06 for mechanical fixtures. See alternate 22.07 for plumbing fixtures and alternate 23.07 for mechanical fixtures. See alternate 22.08 for plumbing fixtures and alternate 23.08 for mechanical fixtures. See alternate 22.09 for plumbing fixtures and alternate 23.09 for mechanical fixtures. See alternate 22.10 for plumbing fixtures and alternate 23.10 for mechanical fixtures. See alternate 22.11 for plumbing fixtures and alternate 23.11 for mechanical fixtures. See alternate 22.12 for plumbing fixtures and alternate 23.12 for mechanical fixtures. See alternate 22.13 for plumbing fixtures and alternate 23.13 for mechanical fixtures. See alternate 22.14 for plumbing fixtures and alternate 23.14 for mechanical fixtures. See alternate 22.15 for plumbing fixtures and alternate 23.15 for mechanical fixtures. See alternate 22.16 for plumbing fixtures and alternate 23.16 for mechanical fixtures. See alternate 22.17 for plumbing fixtures and alternate 23.17 for mechanical fixtures. See alternate 22.18 for plumbing fixtures and alternate 23.18 for mechanical fixtures. See alternate 22.19 for plumbing fixtures and alternate 23.19 for mechanical fixtures. See alternate 22.20 for plumbing fixtures and alternate 23.20 for mechanical fixtures. See alternate 22.21 for plumbing fixtures and alternate 23.21 for mechanical fixtures. See alternate 22.22 for plumbing fixtures and alternate 23.22 for mechanical fixtures. See alternate 22.23 for plumbing fixtures and alternate 23.23 for mechanical fixtures. See alternate 22.24 for plumbing fixtures and alternate 23.24 for mechanical fixtures. See alternate 22.25 for plumbing fixtures and alternate 23.25 for mechanical fixtures. See alternate 22.26 for plumbing fixtures and alternate 23.26 for mechanical fixtures. See alternate 22.27 for plumbing fixtures and alternate 23.27 for mechanical fixtures. See alternate 22.28 for plumbing fixtures and alternate 23.28 for mechanical fixtures. See alternate 22.29 for plumbing fixtures and alternate 23.29 for mechanical fixtures. See alternate 22.30 for plumbing fixtures and alternate 23.30 for mechanical fixtures. See alternate 22.31 for plumbing fixtures and alternate 23.31 for mechanical fixtures. See alternate 22.32 for plumbing fixtures and alternate 23.32 for mechanical fixtures. See alternate 22.33 for plumbing fixtures and alternate 23.33 for mechanical fixtures. See alternate 22.34 for plumbing fixtures and alternate 23.34 for mechanical fixtures. See alternate 22.35 for plumbing fixtures and alternate 23.35 for mechanical fixtures. See alternate 22.36 for plumbing fixtures and alternate 23.36 for mechanical fixtures. See alternate 22.37 for plumbing fixtures and alternate 23.37 for mechanical fixtures. See alternate 22.38 for plumbing fixtures and alternate 23.38 for mechanical fixtures. See alternate 22.39 for plumbing fixtures and alternate 23.39 for mechanical fixtures. See alternate 22.40 for plumbing fixtures and alternate 23.40 for mechanical fixtures. See alternate 22.41 for plumbing fixtures and alternate 23.41 for mechanical fixtures. See alternate 22.42 for plumbing fixtures and alternate 23.42 for mechanical fixtures. See alternate 22.43 for plumbing fixtures and alternate 23.43 for mechanical fixtures. See alternate 22.44 for plumbing fixtures and alternate 23.44 for mechanical fixtures. See alternate 22.45 for plumbing fixtures and alternate 23.45 for mechanical fixtures. See alternate 22.46 for plumbing fixtures and alternate 23.46 for mechanical fixtures. See alternate 22.47 for plumbing fixtures and alternate 23.47 for mechanical fixtures. See alternate 22.48 for plumbing fixtures and alternate 23.48 for mechanical fixtures. See alternate 22.49 for plumbing fixtures and alternate 23.49 for mechanical fixtures. See alternate 22.50 for plumbing fixtures and alternate 23.50 for mechanical fixtures. See alternate 22.51 for plumbing fixtures and alternate 23.51 for mechanical fixtures. See alternate 22.52 for plumbing fixtures and alternate 23.52 for mechanical fixtures. See alternate 22.53 for plumbing fixtures and alternate 23.53 for mechanical fixtures. See alternate 22.54 for plumbing fixtures and alternate 23.54 for mechanical fixtures. See alternate 22.55 for plumbing fixtures and alternate 23.55 for mechanical fixtures. See alternate 22.56 for plumbing fixtures and alternate 23.56 for mechanical fixtures. See alternate 22.57 for plumbing fixtures and alternate 23.57 for mechanical fixtures. See alternate 22.58 for plumbing fixtures and alternate 23.58 for mechanical fixtures. See alternate 22.59 for plumbing fixtures and alternate 23.59 for mechanical fixtures. See alternate 22.60 for plumbing fixtures and alternate 23.60 for mechanical fixtures. See alternate 22.61 for plumbing fixtures and alternate 23.61 for mechanical fixtures. See alternate 22.62 for plumbing fixtures and alternate 23.62 for mechanical fixtures. See alternate 22.63 for plumbing fixtures and alternate 23.63 for mechanical fixtures. See alternate 22.64 for plumbing fixtures and alternate 23.64 for mechanical fixtures. See alternate 22.65 for plumbing fixtures and alternate 23.65 for mechanical fixtures. See alternate 22.66 for plumbing fixtures and alternate 23.66 for mechanical fixtures. See alternate 22.67 for plumbing fixtures and alternate 23.67 for mechanical fixtures. See alternate 22.68 for plumbing fixtures and alternate 23.68 for mechanical fixtures. See alternate 22.69 for plumbing fixtures and alternate 23.69 for mechanical fixtures. See alternate 22.70 for plumbing fixtures and alternate 23.70 for mechanical fixtures. See alternate 22.71 for plumbing fixtures and alternate 23.71 for mechanical fixtures. See alternate 22.72 for plumbing fixtures and alternate 23.72 for mechanical fixtures. See alternate 22.73 for plumbing fixtures and alternate 23.73 for mechanical fixtures. See alternate 22.74 for plumbing fixtures and alternate 23.74 for mechanical fixtures. See alternate 22.75 for plumbing fixtures and alternate 23.75 for mechanical fixtures. See alternate 22.76 for plumbing fixtures and alternate 23.76 for mechanical fixtures. See alternate 22.77 for plumbing fixtures and alternate 23.77 for mechanical fixtures. See alternate 22.78 for plumbing fixtures and alternate 23.78 for mechanical fixtures. See alternate 22.79 for plumbing fixtures and alternate 23.79 for mechanical fixtures. See alternate 22.80 for plumbing fixtures and alternate 23.80 for mechanical fixtures. See alternate 22.81 for plumbing fixtures and alternate 23.81 for mechanical fixtures. See alternate 22.82 for plumbing fixtures and alternate 23.82 for mechanical fixtures. See alternate 22.83 for plumbing fixtures and alternate 23.83 for mechanical fixtures. See alternate 22.84 for plumbing fixtures and alternate 23.84 for mechanical fixtures. See alternate 22.85 for plumbing fixtures and alternate 23.85 for mechanical fixtures. See alternate 22.86 for plumbing fixtures and alternate 23.86 for mechanical fixtures. See alternate 22.87 for plumbing fixtures and alternate 23.87 for mechanical fixtures. See alternate 22.88 for plumbing fixtures and alternate 23.88 for mechanical fixtures. See alternate 22.89 for plumbing fixtures and alternate 23.89 for mechanical fixtures. See alternate 22.90 for plumbing fixtures and alternate 23.90 for mechanical fixtures. See alternate 22.91 for plumbing fixtures and alternate 23.91 for mechanical fixtures. See alternate 22.92 for plumbing fixtures and alternate 23.92 for mechanical fixtures. See alternate 22.93 for plumbing fixtures and alternate 23.93 for mechanical fixtures. See alternate 22.94 for plumbing fixtures and alternate 23.94 for mechanical fixtures. See alternate 22.95 for plumbing fixtures and alternate 23.95 for mechanical fixtures. See alternate 22.96 for plumbing fixtures and alternate 23.96 for mechanical fixtures. See alternate 22.97 for plumbing fixtures and alternate 23.97 for mechanical fixtures. See alternate 22.98 for plumbing fixtures and alternate 23.98 for mechanical fixtures. See alternate 22.99 for plumbing fixtures and alternate 23.99 for mechanical fixtures. See alternate 23.00 for plumbing fixtures and alternate 24.00 for mechanical fixtures.</p>

MAIN FLOOR

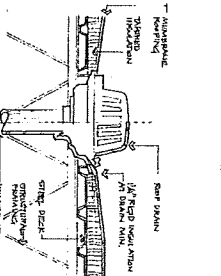
ARMENIAN

250 CA

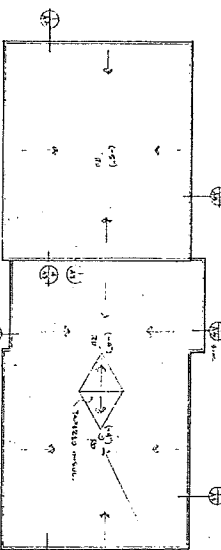
BAR



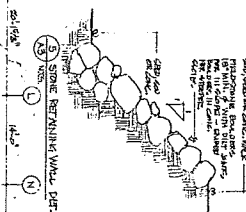
FLASHING DETAIL
SCALE 3/4" = 1'-0"



ROOF EDGE DETAIL
SCALE 3/4" = 1'-0"



ROOF DRAIN DETAIL
SCALE 3/4" = 1'-0"



STONE RETAINING WALL DET.
SCALE 3/4" = 1'-0"

NOTE: 1. ALL DIMENSIONS ARE TO FACE UNLESS OTHERWISE NOTED.
2. ALL DIMENSIONS ARE TO FACE UNLESS OTHERWISE NOTED.
3. ALL DIMENSIONS ARE TO FACE UNLESS OTHERWISE NOTED.

<p>BP Parker Lawson & Burdette, Inc. Architects Madison, Wisconsin</p>		<p>DATE: 10/1/03 PROJECT: ZOR STEPAN STEPANIAN TEMPLE SHEET: 101</p>	
<p>DESIGNED BY: [Name] CHECKED BY: [Name] DATE: 10/1/03</p>		<p>SCALE: AS SHOWN</p>	
<p>PROJECT: ZOR STEPAN STEPANIAN TEMPLE SHEET: 101</p>		<p>SCALE: AS SHOWN</p>	