

PROPOSED



710 John Nolen Drive - Madison, WI



UDC Presentation



G B A
architecture | design
www.garybrink.com

04-27-2022





IMAGE NO. 11



IMAGE NO. 10



IMAGE NO. 9



IMAGE NO. 8



IMAGE NO. 7

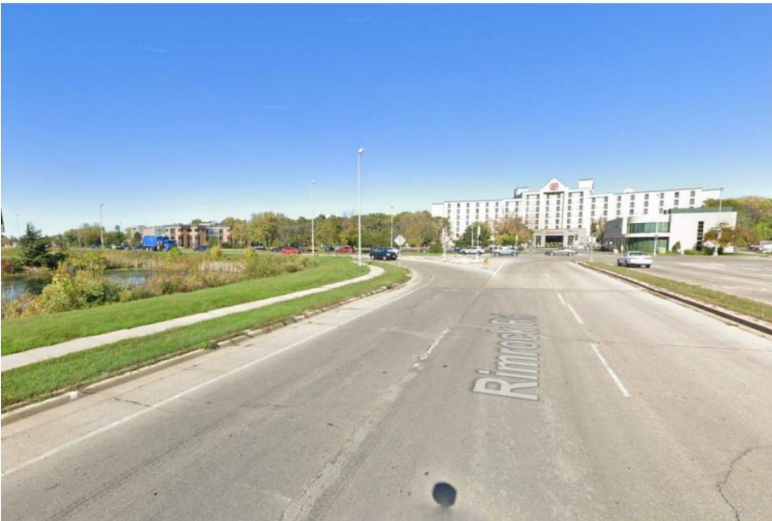


IMAGE NO. 6

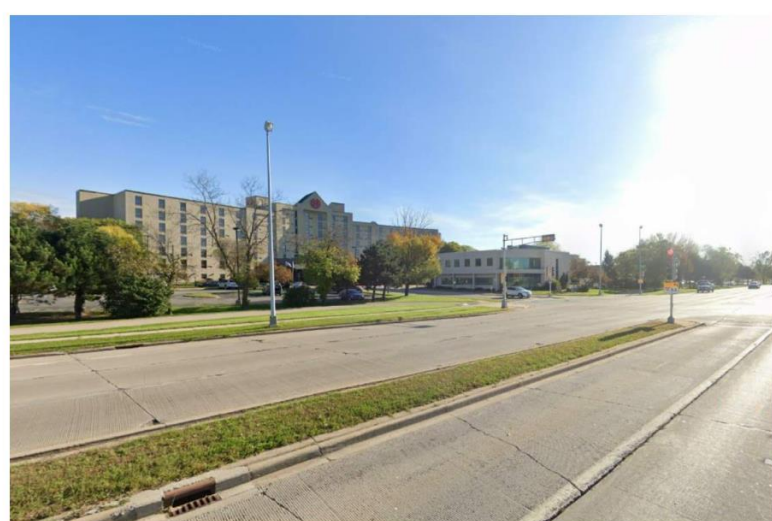


IMAGE NO. 5



IMAGE NO. 4



IMAGE NO. 3

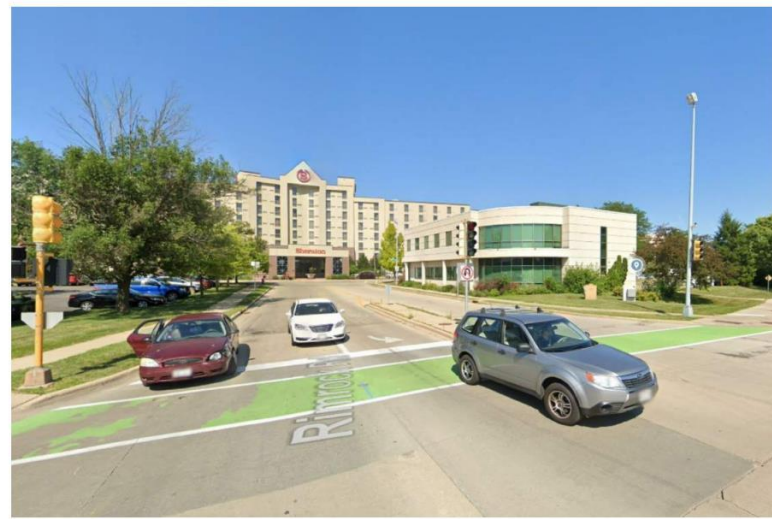
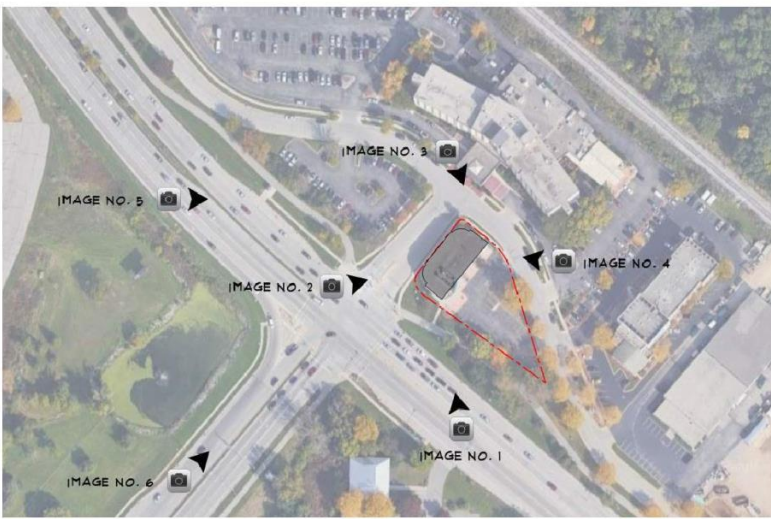


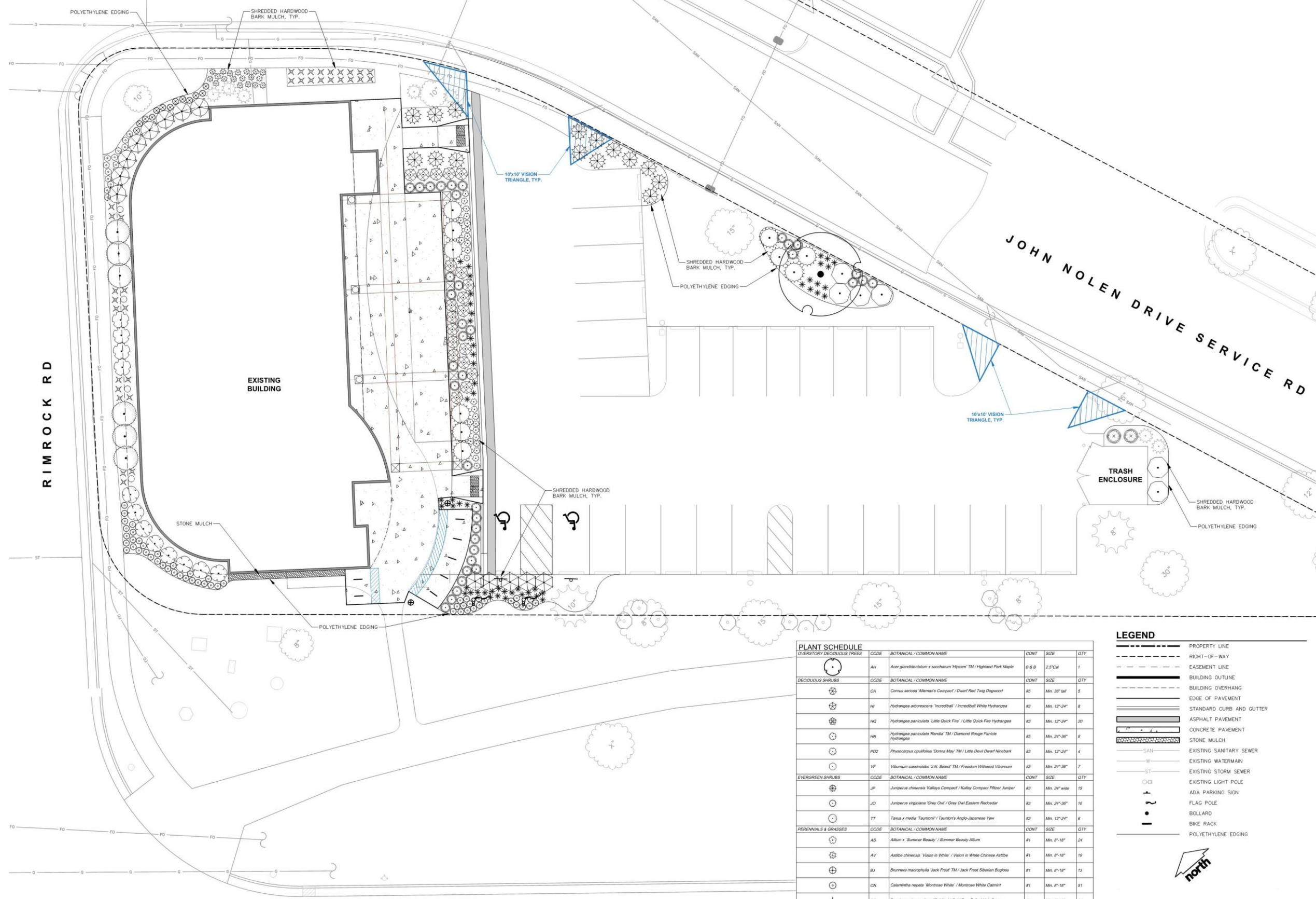
IMAGE NO. 2



IMAGE NO. 1



SITE CONTEXT MAP

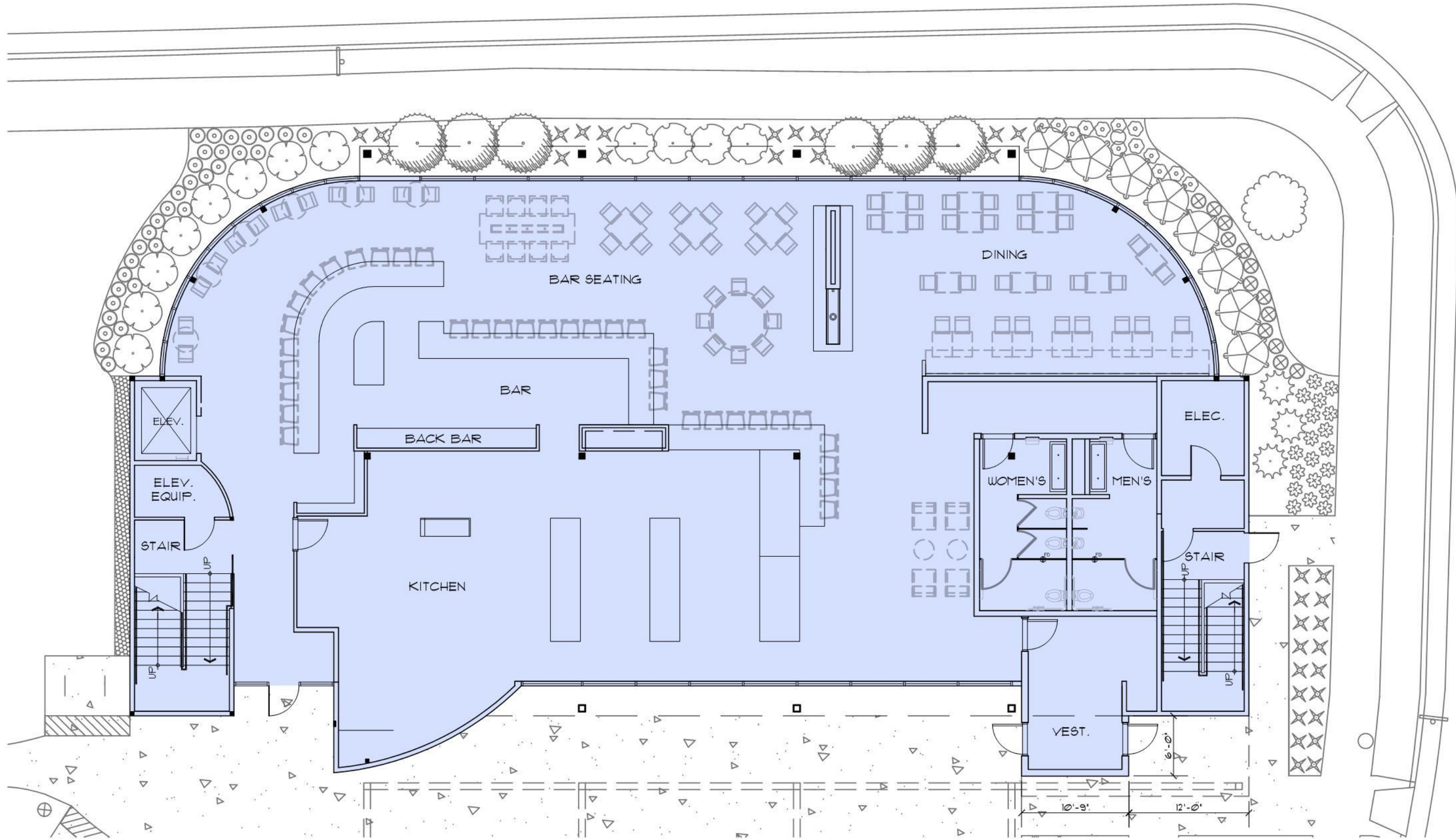


PLANT SCHEDULE					
CODE	BOTANICAL / COMMON NAME	CONT	SIZE	QTY	
OVERSTORY DECIDUOUS TREES					
AH	<i>Acer grandidentatum</i> x <i>saccharum</i> 'Hiram'™ / Highland Park Maple	B & B	2.5' Cal	1	
DECIDUOUS SHRUBS					
CA	<i>Cornus sericea</i> 'Mileman's Compact' / Dwarf Red Twig Dogwood	#5	Min. 36" tall	5	
HF	<i>Hydrangea arborescens</i> 'Incrediball' / Incrediball White Hydrangea	#3	Min. 12"-24"	8	
HQ	<i>Hydrangea paniculata</i> 'Little Quick Fire' / Little Quick Fire Hydrangea	#3	Min. 12"-24"	20	
HN	<i>Hydrangea paniculata</i> 'Rendai'™ / Diamond Rouge Panicle Hydrangea	#5	Min. 24"-36"	6	
PDZ	<i>Physocarpus opulifolius</i> 'Dorona May'™ / Little Devil Dwarf Newsack	#3	Min. 12"-24"	4	
VF	<i>Viburnum cassinoides</i> 'J.N. Select'™ / Freedom Without Viburnum	#5	Min. 24"-36"	7	
EVERGREEN SHRUBS					
JP	<i>Juniperus chinensis</i> 'Katalpa Compact' / Katalpa Compact Pfitzer Juniper	#3	Min. 24" wide	15	
JO	<i>Juniperus virginiana</i> 'Grey Owl' / Grey Owl Eastern Redcedar	#3	Min. 24"-36"	10	
TT	<i>Taxus x media</i> 'Taurtoni' / Taurtoni's Anglo-Japanese Yew	#3	Min. 12"-24"	6	
PERENNIALS & GRASSES					
AS	<i>Allium</i> x 'Summer Beauty' / Summer Beauty Allium	#1	Min. 8"-18"	24	
AV	<i>Astilbe chinensis</i> 'Vision in White' / Vision in White Chinese Astilbe	#1	Min. 8"-18"	19	
BJ	<i>Brunnera macrophylla</i> 'Jack Frost'™ / Jack Frost Siberian Bugloss	#1	Min. 8"-18"	13	
CN	<i>Camassia repens</i> 'Montrose White' / Montrose White Camassia	#1	Min. 8"-18"	51	
DG	<i>Deschampsia cespitosa</i> 'Gold Dew' / Gold Dew Tufted Hair Grass	#1	Min. 8"-18"	34	
HC	<i>Heuchera</i> x 'Stainless Steel' / Stainless Steel Coral Bell	#1	Min. 8"-18"	13	
PV	<i>Panicum virgatum</i> 'Shenandoah' / Shenandoah Switch Grass	#1	Min. 8"-18"	37	
SH	<i>Sporobolus heterolepis</i> 'Tara' / Prairie Dropseed	#1	Min. 8"-18"	51	
UPRIGHT EVERGREEN SHRUBS					
TH	<i>Thuja occidentalis</i> 'Holmsbury' / Holmsbury Arborvitae	B & B	Min. 5' tall	3	

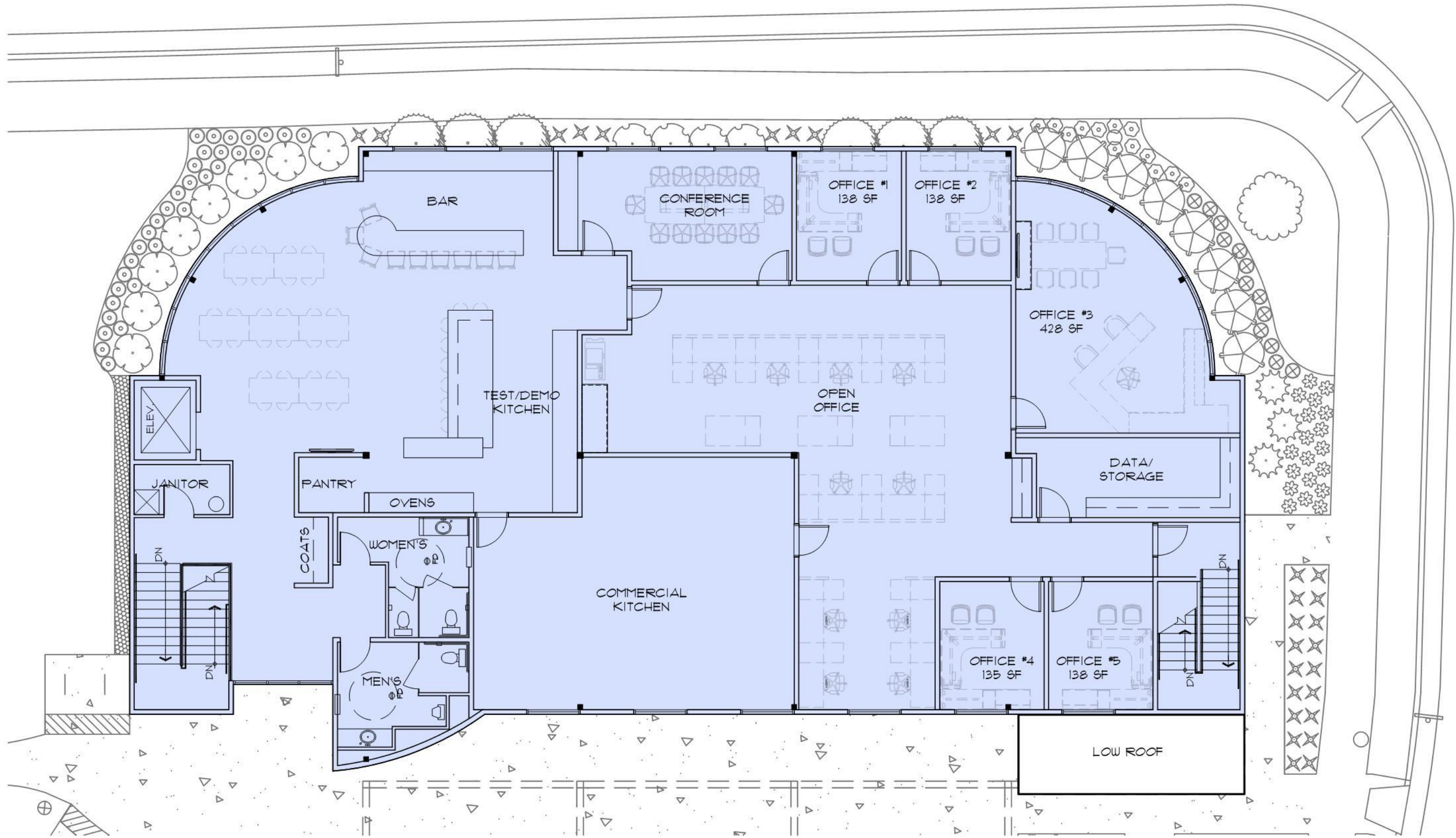
LEGEND

- PROPERTY LINE
- RIGHT-OF-WAY
- EASEMENT LINE
- BUILDING OUTLINE
- BUILDING OVERHANG
- EDGE OF PAVEMENT
- STANDARD CURB AND GUTTER
- ASPHALT PAVEMENT
- CONCRETE PAVEMENT
- STONE MULCH
- EXISTING SANITARY SEWER
- EXISTING WATERMAIN
- EXISTING STORM SEWER
- EXISTING LIGHT POLE
- ADA PARKING SIGN
- FLAG POLE
- BOLLARD
- BIKE RACK
- POLYETHYLENE EDGING

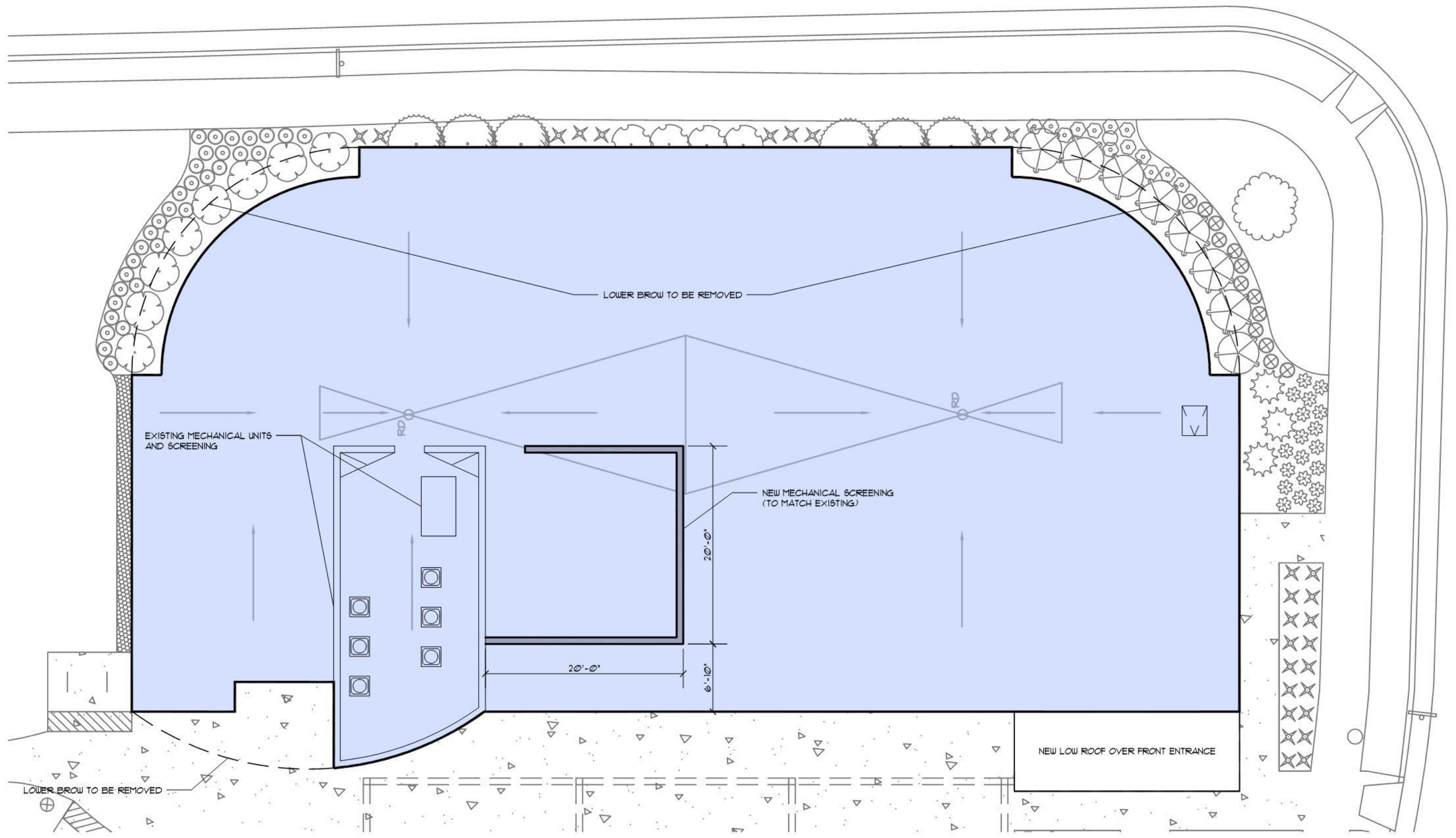
north



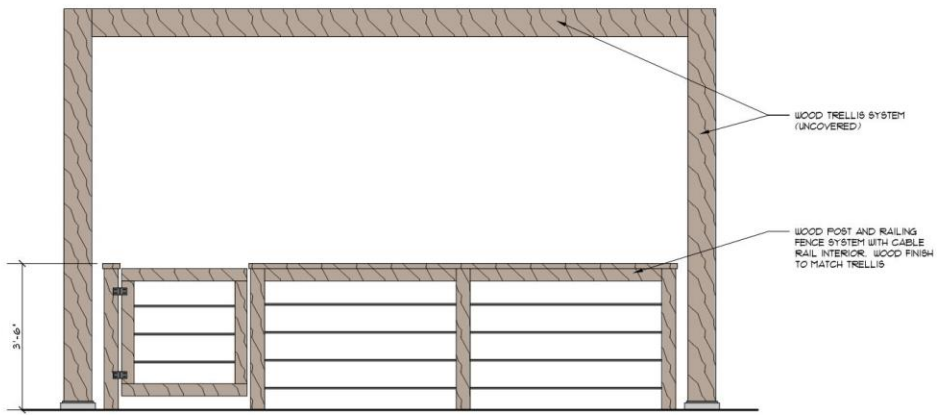
 FIRST FLOOR PLAN



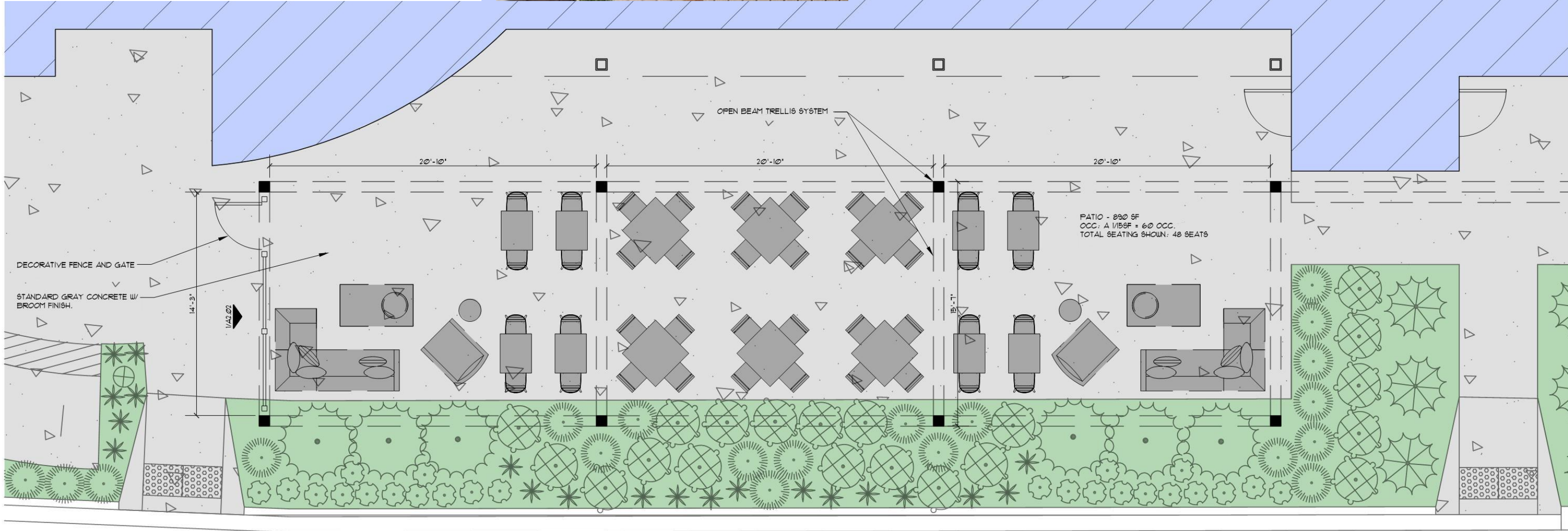
 **SECOND FLOOR PLAN**



 **ROOF PLAN**



1 ELEVATION AT FENCE



 OUTDOOR PATIO PLAN



G B A
architecture | design
www.garybrink.com

Architectural Rendering





G B A
architecture | design
www.garybrink.com

Architectural Rendering





G B A
architecture | design
www.garybrink.com

Architectural Rendering

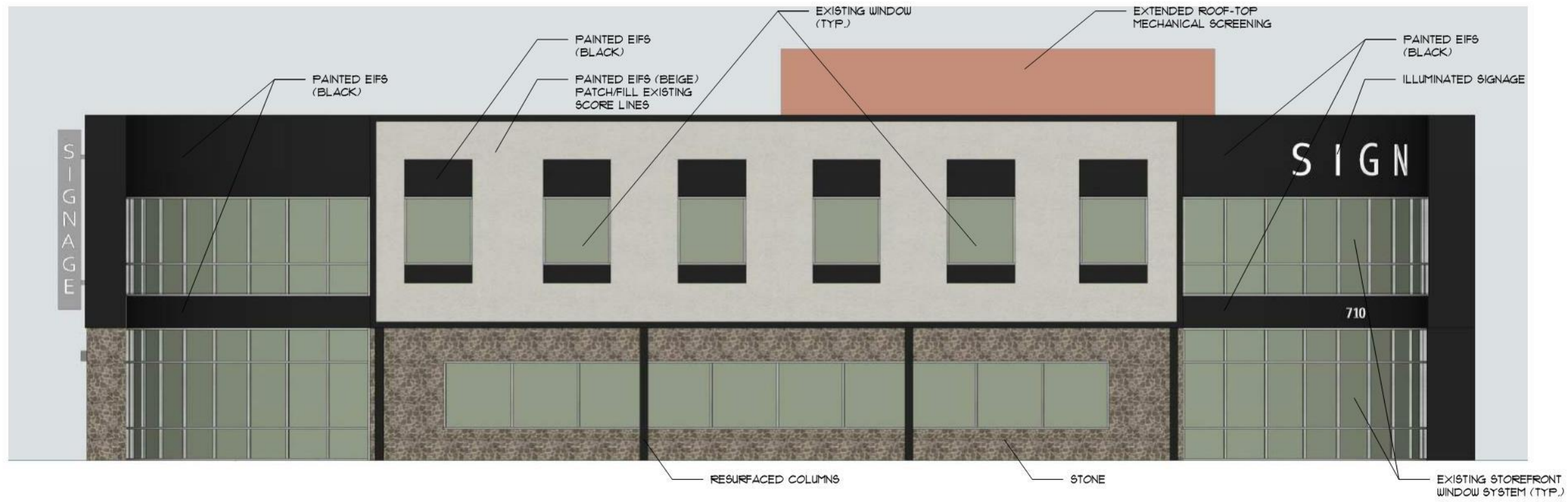




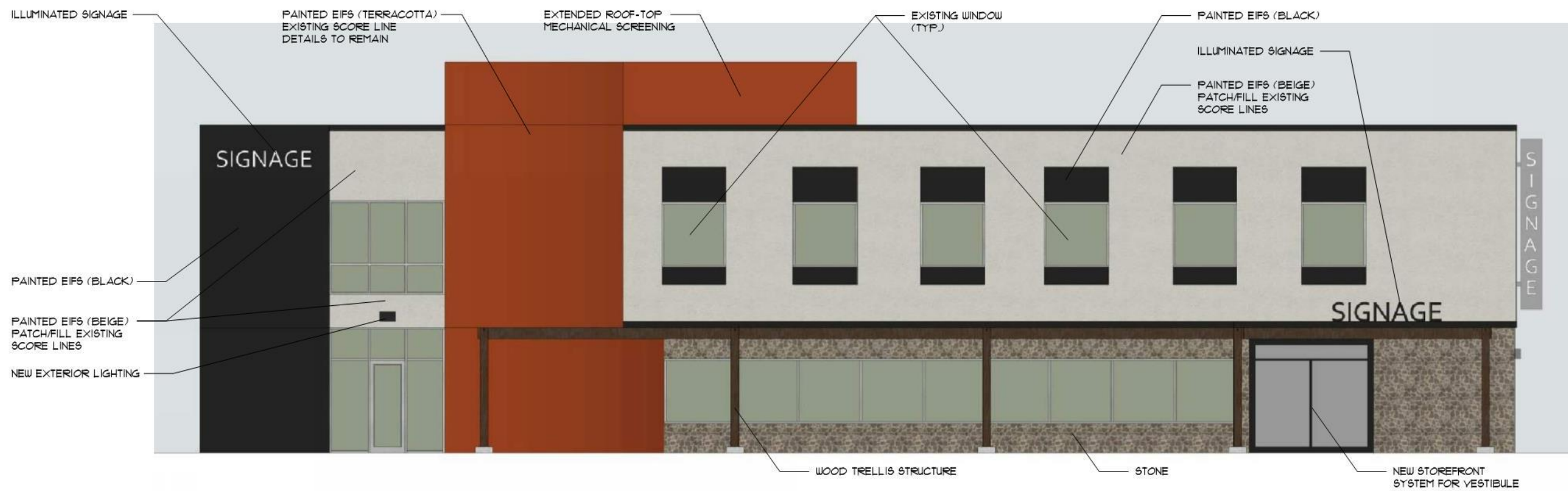
G B A
architecture | design
www.garybrink.com

Architectural Rendering





NORTHWEST ELEVATION



SOUTHEAST ELEVATION



STONE



EIFS (BEIGE)



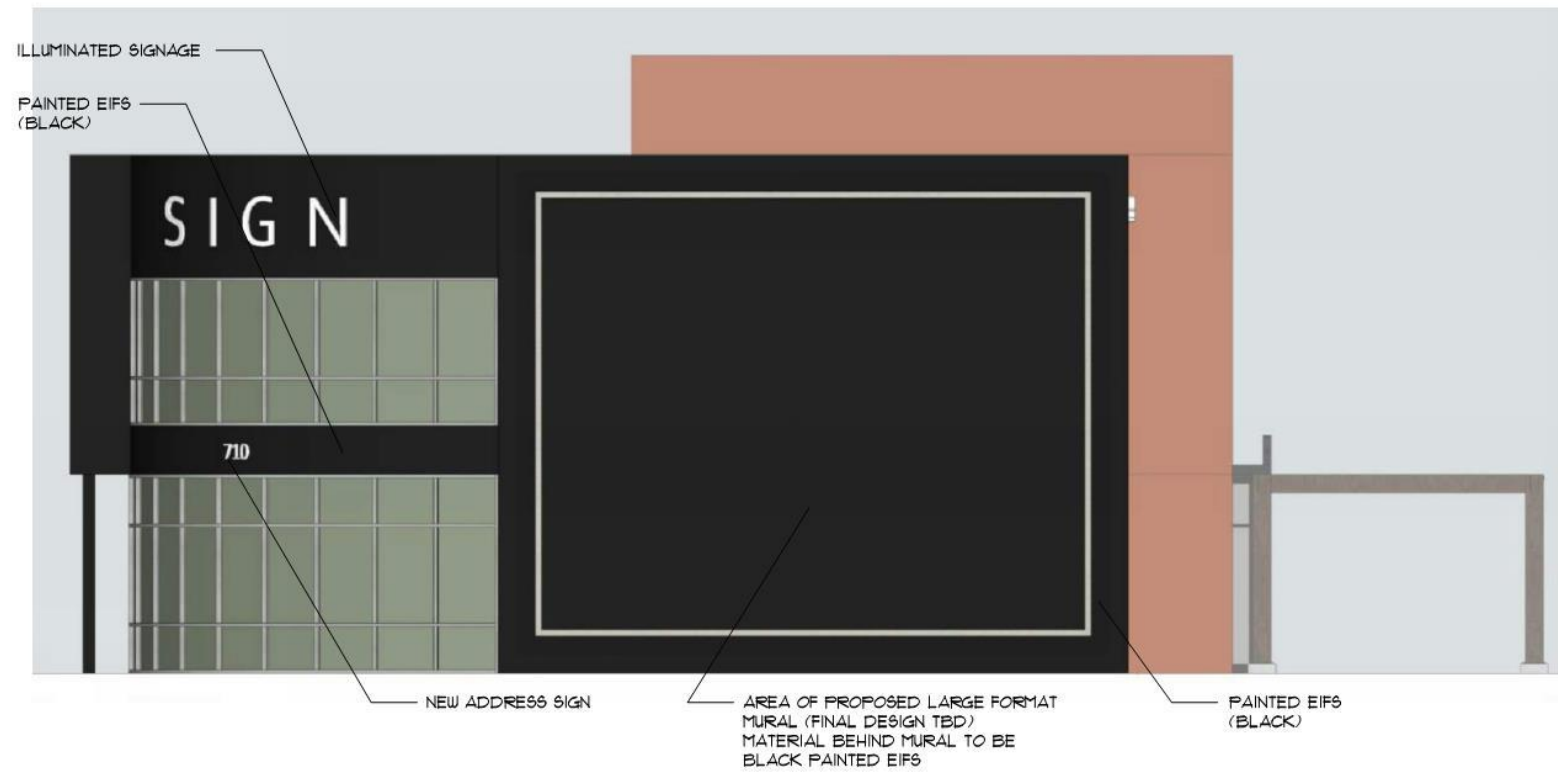
EIFS (BLACK)



EIFS (TERRACOTTA)



NORTHEAST ELEVATION



SOUTHWEST ELEVATION