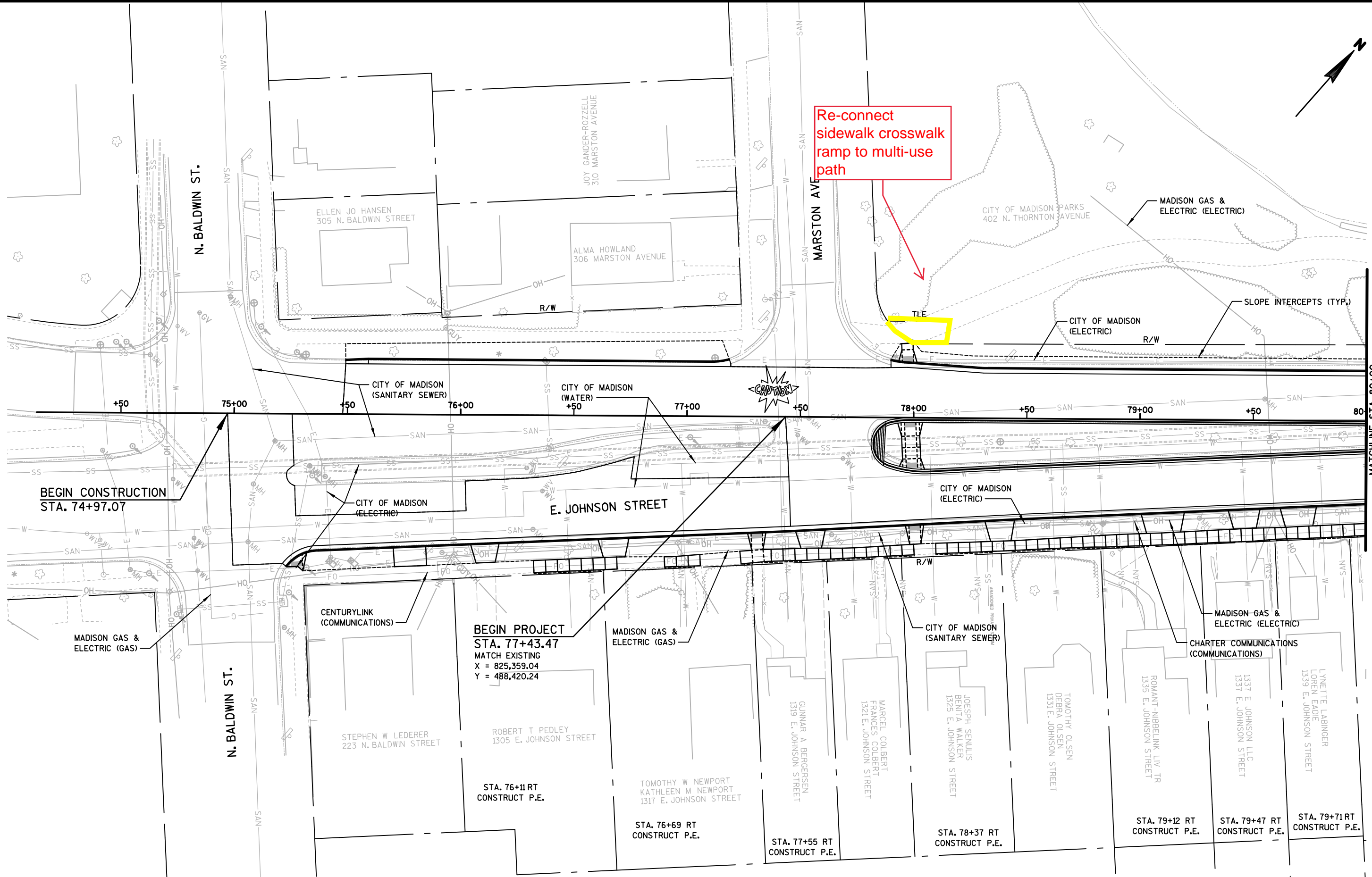


Re-connect  
sidewalk crosswalk  
ramp to multi-use  
path

5

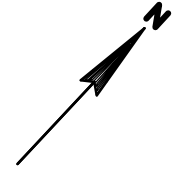
5



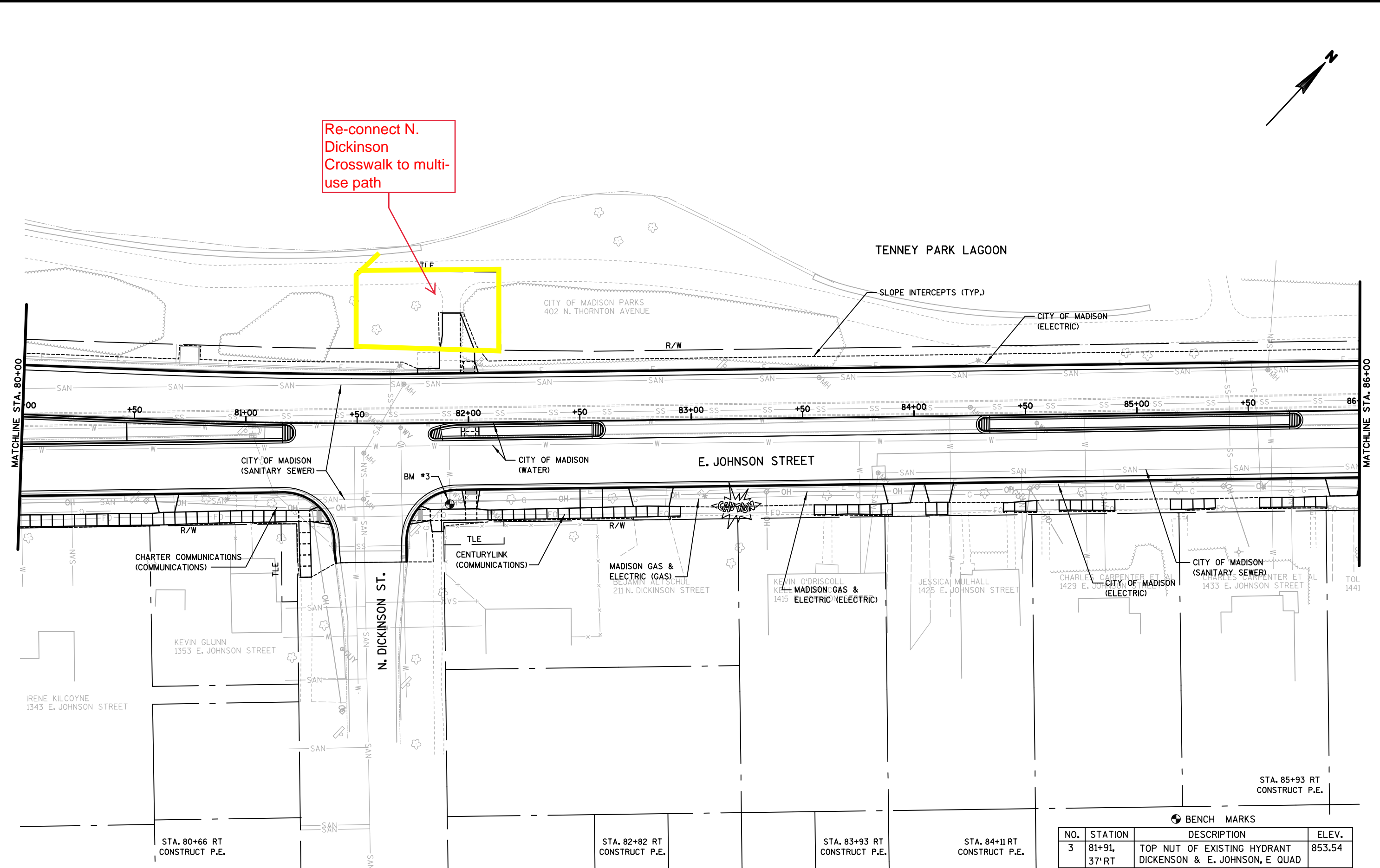
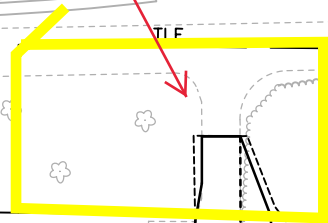
BEGIN CONSTRUCTION  
STA. 74+97.07

BEGIN PROJECT  
STA. 77+43.47  
MATCH EXISTING  
X = 825,359.04  
Y = 488,420.24

MATCHLINE STA. 80+00

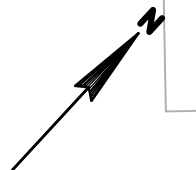


Re-connect N. Dickinson Crosswalk to multi-use path



BENCH MARKS

NO.	STATION	DESCRIPTION	ELEV.
3	81+91, 37' RT	TOP NUT OF EXISTING HYDRANT DICKINSON & E. JOHNSON, E QUAD	853.54

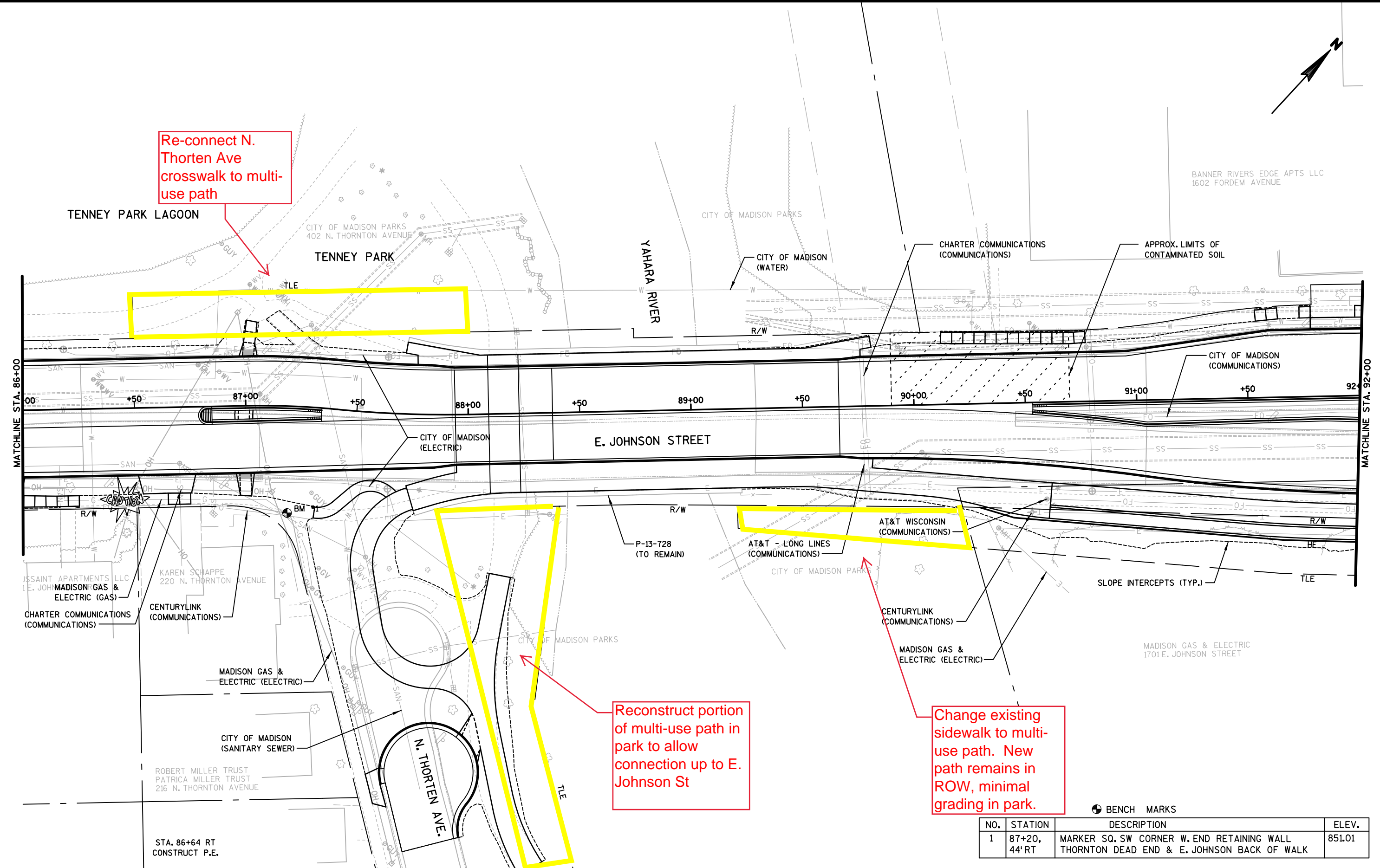


Re-connect N. Thorten Ave crosswalk to multi-use path



Reconstruct portion of multi-use path in park to allow connection up to E. Johnson St

Change existing sidewalk to multi-use path. New path remains in ROW, minimal grading in park.



BENCH MARKS

NO.	STATION	DESCRIPTION	ELEV.
1	87+20, 44' RT	MARKER SQ. SW CORNER W. END RETAINING WALL THORNTON DEAD END & E. JOHNSON BACK OF WALK	851.01