

# Acewood Pond Sand Filter

5/11/5016 Parks Commission  
Meeting

- Pond History
- Proposed device
- Park impacts
- Park benefits
- Extended benefits

# Project Location





1937



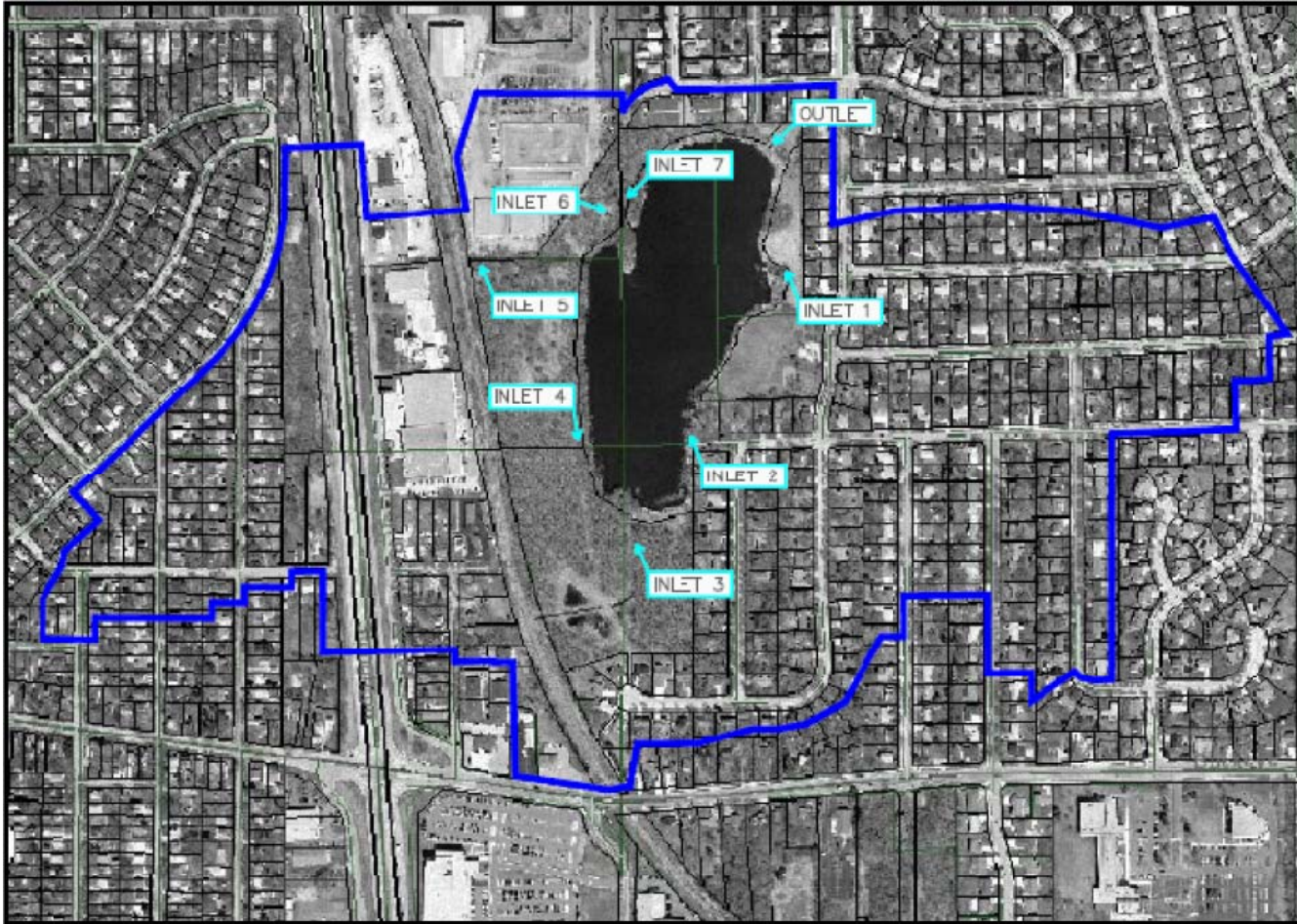
1955



1980



2000



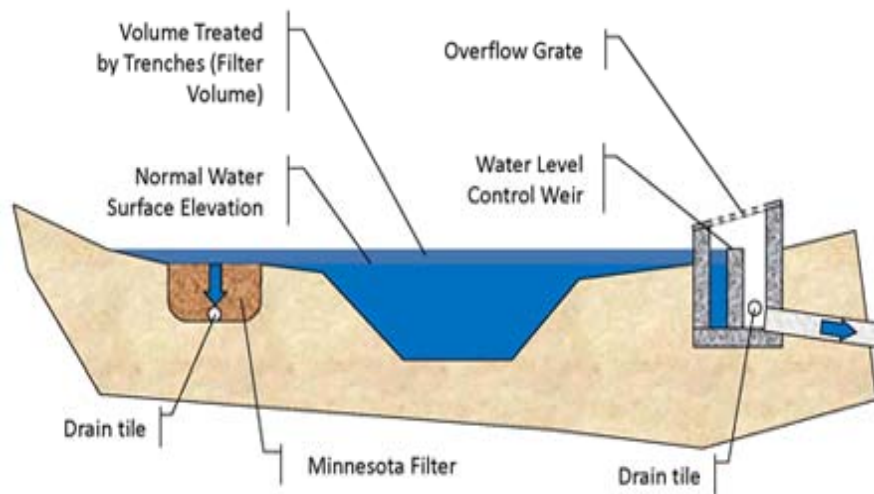
# Outfall



# Proposed Device

Minnesota Filter: Iron Enriched Sand Filter

95% Sand 5% Iron Filings = 90% Dissolved Phosphorus Removal



<http://www.safl.umn.edu/featured-story/making-tracks-toward-innovation-stormwater-runoff-treatment-train>

[http://stormwater.pca.state.mn.us/index.php/Soil\\_amendments\\_to\\_enhance\\_phosphorus\\_sorption](http://stormwater.pca.state.mn.us/index.php/Soil_amendments_to_enhance_phosphorus_sorption)

# Project Boundaries

- 220 vs 320
- $8 \times 220 = 1760$  sf
- $8 \times 320 = 2560$  sf





# Park Impacts

- Change in ~320 feet of bank
- 1 ash removed
- 1 walnut removed
- Some box elder and sandbar willow removed
- ~500 Native Plants
- Outlet Repair



# Project Risks

- Tree Removal
- Park Usage during  
– 2 weeks late summer
- DNR Permitting
- Does not benefit



# Project Benefits

- MMSD Grant for up to 15k in matching funds
  - Presented Project Scope ~25k
- 5lb dissolved P
- 10 lb Particulate P

Potential for City Wide implementation