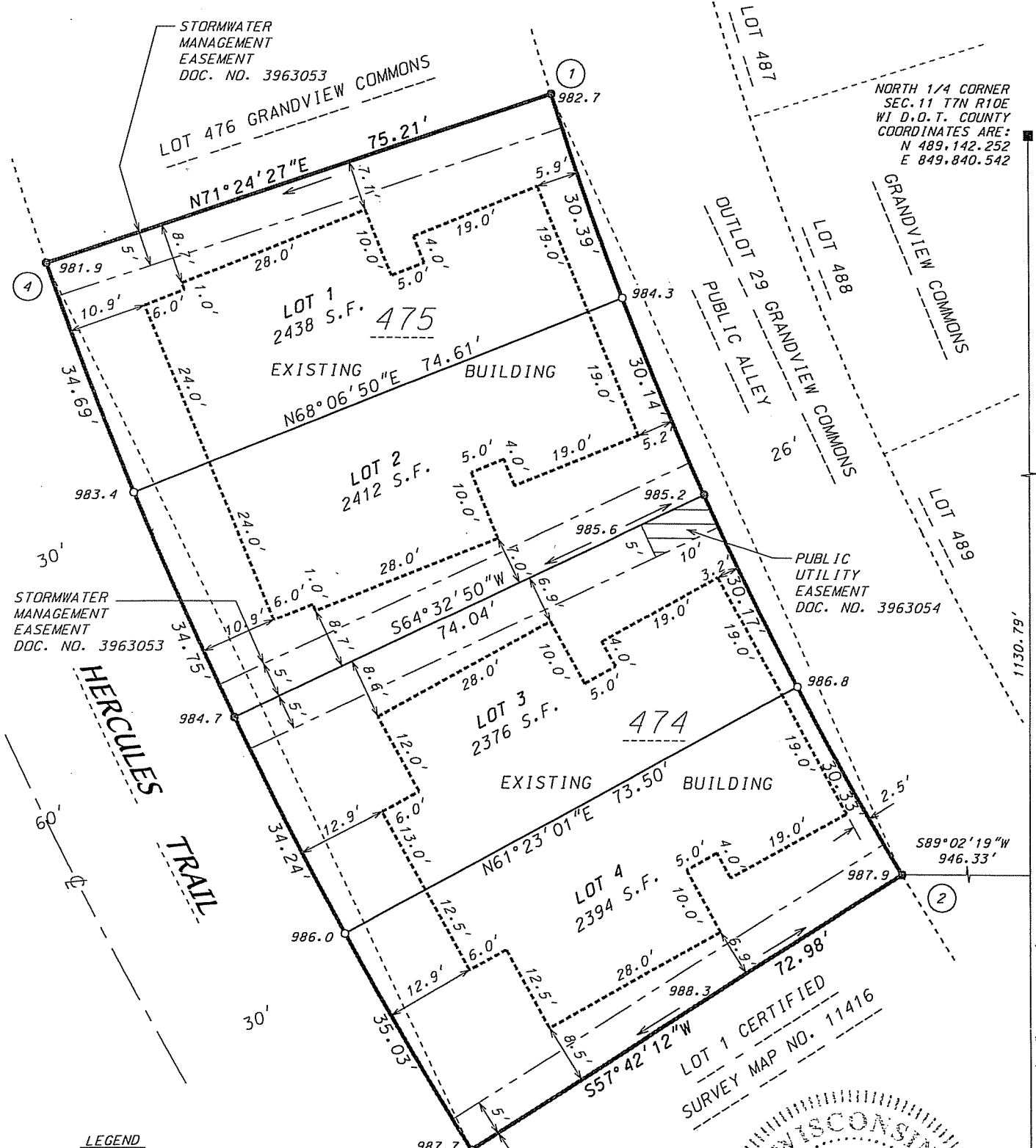


CERTIFIED SURVEY MAP

LOT 474 AND 475 GRANDVIEW COMMONS
 LOCATED IN THE NE 1/4 OF THE NW 1/4 OF SECTION 11, T7N, R10E
 CITY OF MADISON, DANE COUNTY, WISCONSIN



NORTH 1/4 CORNER
 SEC. 11 T7N R10E
 WI D.O.T. COUNTY
 COORDINATES ARE:
 N 489,142.252
 E 849,840.542

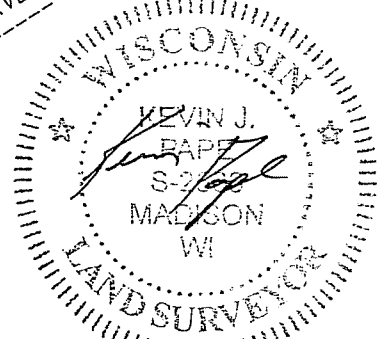
LEGEND

- FOUND 3/4" SOLID ROUND IRON STAKE
- PLACED 3/4"x 24" SOLID ROUND IRON STAKE WEIGHING 1.50 lbs/ft.
- FOUND CITY OF MADISON CONCRETE MONUMENT W/BRASS CAP
- PUBLIC UTILITY EASEMENT. UTILITY EASEMENTS AS HEREIN SET FORTH ARE FOR THE USE OF PUBLIC BODIES AND PRIVATE PUBLIC UTILITIES HAVING THE RIGHT TO SERVE THE AREA.

1020.0 LOT CORNER ELEVATION



LOT 1 CERTIFIED
 SURVEY MAP NO. 11416



11-18-05

CENTER SECTION 11 T7N R10E

S00°57'41"E 2644.56'

1130.79'