

UnityPoint Health - Meriter - Child & Adolescent Psychiatry

8102 Wellness Way, Madison



File: I:\2024\24146702 Planning\01 Graphics and Exhibits\2024-04-23_Master Plan_Rendering\241467 - EXHIBIT - Master Plan - linework.dwg Layout: titleblock (2) User: msiniscahli Printed: May 10, 2024 - 7:04pm Xrefs:

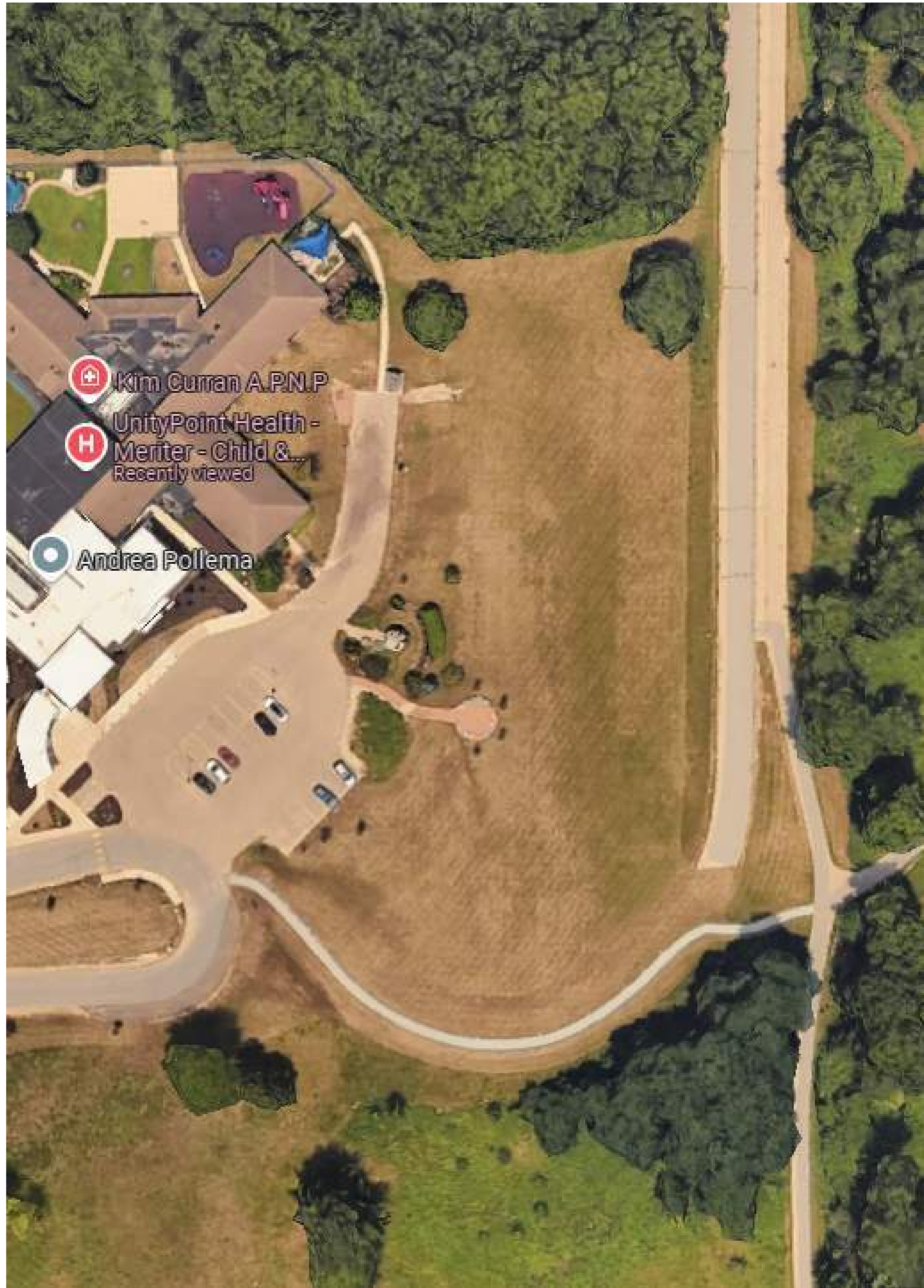


UNITY POINT HEALTH - MERITER CAP
MADISON, WI

CONTEXT MAP

NOT TO SCALE





File: I:\2024\241467\02 Planning\01 Graphics and Exhibits\2024-04-23_Master Plan_Rendering\241467 - EXHIBIT - Master Plan - line work.dwg Layout: titleblock (2) User: msjiscachi Plot: May 10, 2024 - 7:04pm Xrefs:



AMENITY SPACE IMPROVEMENTS



File: I:\2024\241468702_Planning\01_Graphics and Exhibits\2024-04-23_Master Plan_Rendering\2414687 - EXHIBIT - Master Plan - linework.dwg Layout: titleblock User: msiniscajch Plot: May 10, 2024 - 7:09pm Xref's:



IMPROVED RAIN GARDEN PLANTINGS

RENOVATED GAZEBO

CANOPY TREE (TYP)

10 RAISED CEDAR GARDEN BOXES

SHADE SAILS W/ POSTS

SPECIMEN OAK TREE

GARDEN SHED WITH WATER SPIGOT SUPPLIED FROM BUILDING

PUMPKIN & WATERMELON PATCH

PRIVACY PLANTINGS

SHRUB (TYP)

IMPROVED PATIO & WALL

EVERGREEN TREE (TYP)

ASPHALT COATING

STONE & SENSORY GARDEN

LABYRINTH

OPEN LAWN PLAY FIELD

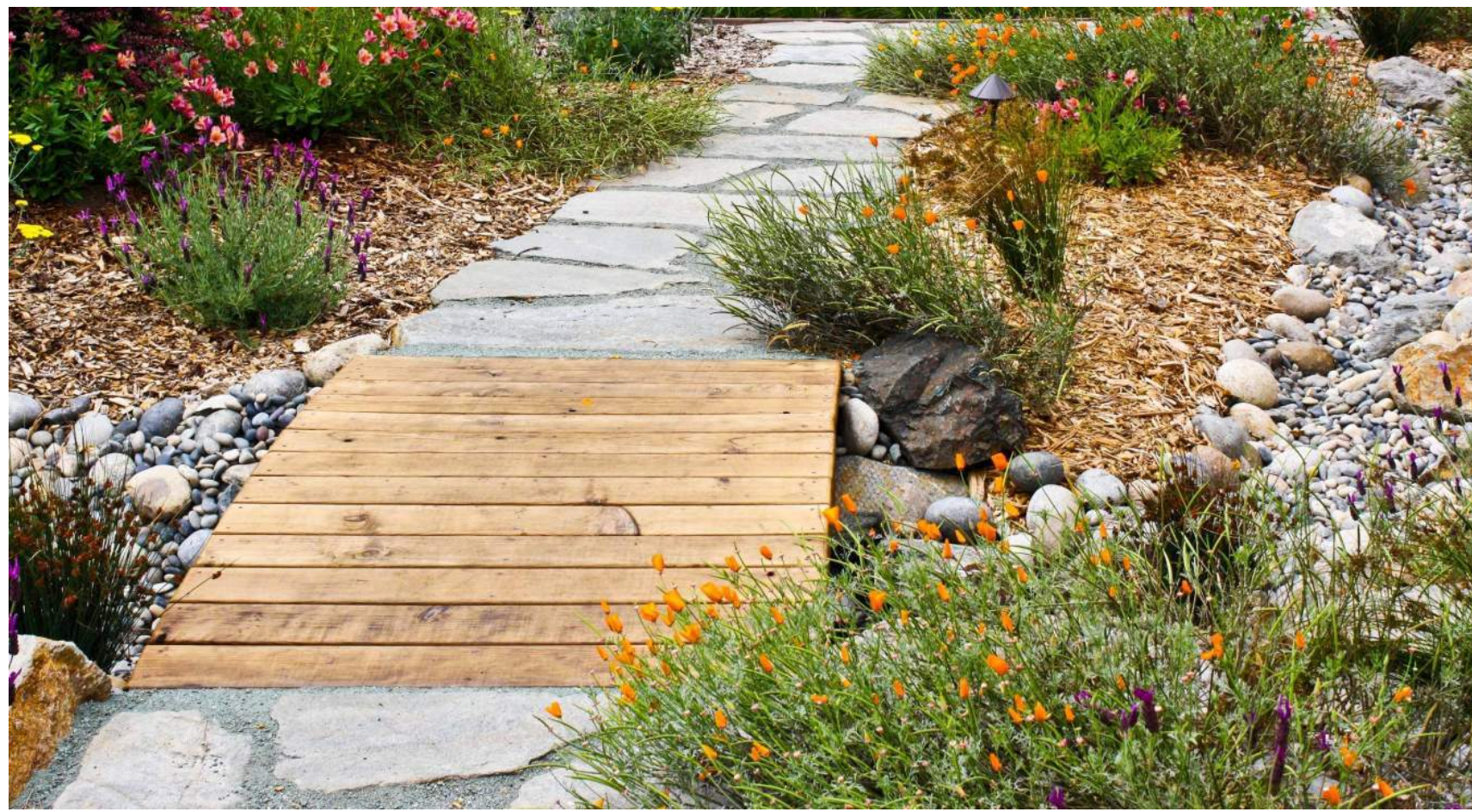
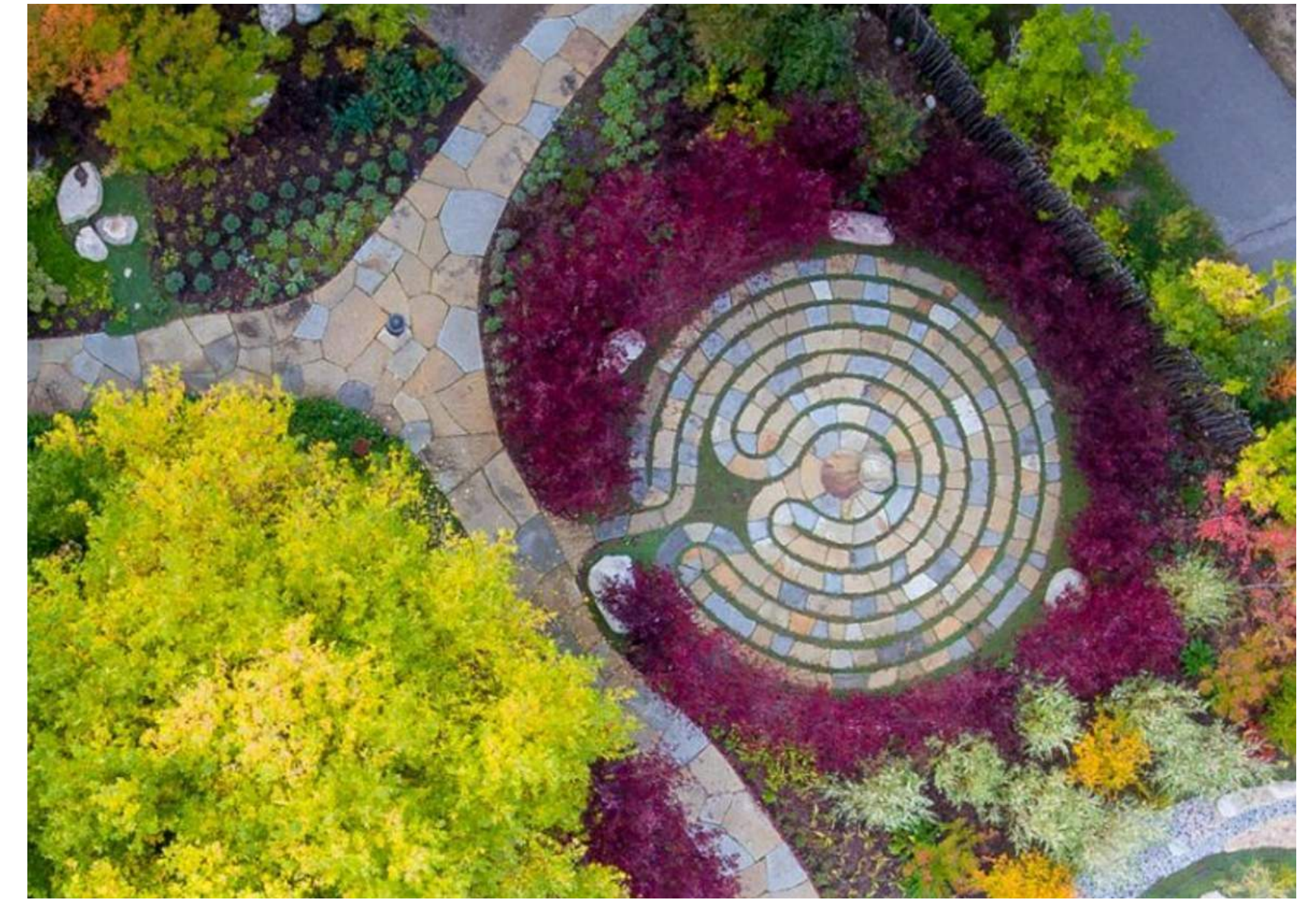
PLANTINGS (TYP)

ALL SEASON PAVILION

OVERLOOK

SLEDDING HILL

SPLIT RAIL FENCE W/ PLANTINGS



TOPOGRAPHIC AND UTILITY MAP

PART OF THE NORTHEAST QUARTER AND THE SOUTHEAST QUARTER OF THE SOUTHEAST QUARTER OF SECTION 3, TOWNSHIP 06 NORTH, RANGE 08 EAST, CITY OF MADISON, DANE COUNTY, WISCONSIN.



VICINITY MAP
NOT TO SCALE

LEGEND

	GOVERNMENT CORNER		RIGHT-OF-WAY LINE		NATURAL GAS
	CONTROL POINT		SECTION LINE		UNDERGROUND ELECTRIC
	BENCHMARK		PROPERTY LINE		EDGE OF WOODS OR BRUSH
	FINISHED FLOOR SHOT LOCATION		EASEMENT LINE		BUILDING
	SANITARY MANHOLE		LANDSCAPE LIMITS		INDEX CONTOUR
	CLEAN OUT		FENCE LINE		INTERMEDIATE CONTOUR
	HYDRANT		STONE WALL		BITUMINOUS PAVEMENT
	WATER VALVE		EDGE OF PAVEMENT		CONCRETE PAVEMENT
	SQUARE CASTED INLET		CONCRETE CURB & GUTTER		GRAVEL
	CURB INLET		EDGE OF GRAVEL		DIRT
	GAS VALVE		SANITARY SEWER		EDGE OF BITUMINOUS
	LIGHT POLE		WATER LINE		PAVEMENT STRIPING
	POWER POLE		STORM SEWER		END OF FLAGGED UTILITIES
	HICCAP PARKING				

NOTES

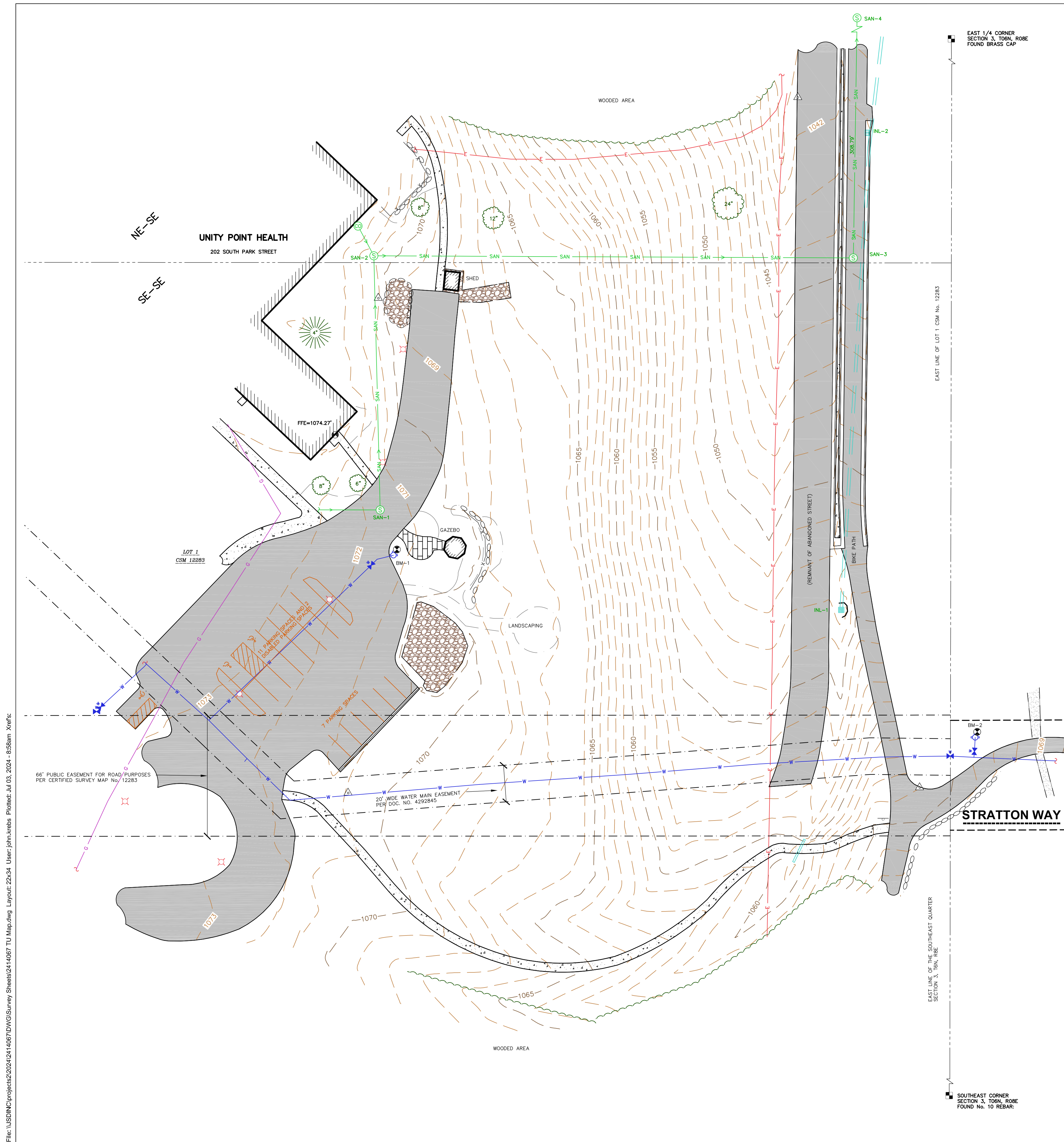
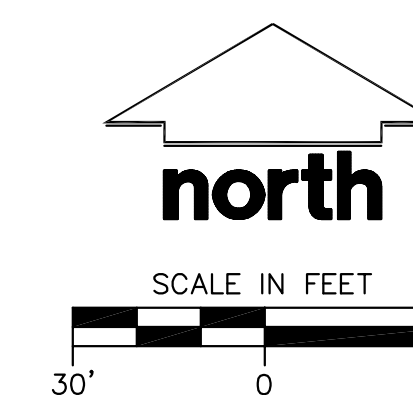
- FIELD WORK PERFORMED ON APRIL 23 & 24, 2024.
- ELEVATIONS ARE BASED ON THE NORTH AMERICAN VERTICAL DATUM OF 1988 (NAVD88). BENCHMARK IS BURY BOLT ON THE HYDRANT NORTHEAST OF THE PARKING LOT. ELEVATION 1071.25'.
- CONTOUR INTERVAL IS ONE FOOT.
- SUBSURFACE UTILITIES AND FEATURES SHOWN ON THIS MAP HAVE BEEN APPROXIMATED BY LOCATING SURFICIAL FEATURES AND APPURTENANCES, LOCATING DIGGERS HOTLINE FIELD MARKINGS AND BY REFERENCE TO UTILITY RECORDS AND MAPS. DIGGER'S HOTLINE TICKET NO. 20241619999, WITH A CLEAR DATE OF 4/23/2024.
- UTILITY COMPANIES CONTACTED THRU DIGGERS HOTLINE:
CITY OF MADISON
CITY OF VERONA
MGE (ELECTRIC AND GAS)
TDS TELECOM
ALLIANT ENERGY (ELECTRIC AND GAS)
WINDSTREAM COMMUNICATIONS
CHARTER COMMUNICATIONS
MT HOREB TELEPHONE CO.
MADISON METRO SEWAGE
LEVEL 3 NOW LUMEN
CENTURYLINK
- BEFORE EXCAVATION, APPROPRIATE UTILITY COMPANIES SHOULD BE CONTACTED. FOR EXACT LOCATION OF UNDERGROUND UTILITIES, CONTACT DIGGERS HOTLINE, AT 1.800.242.8511.
- THIS MAP IS NOT INTENDED TO BE A PROPERTY SURVEY AS DEFINED BY WISCONSIN ADMINISTRATIVE CODE AE-7.

SANITARY SEWER MANHOLES					
STRUCTURE ID	RIM ELEVATION	INVERT	ELEVATION	PIPE SIZE	PIPE TYPE
SAN-1	1071.57	W	1062.61	10"	PVC
		N	1062.57	10"	PVC
		S	1060.47	10"	PVC
SAN-2	1071.12	N	1062.33	8"	PVC
		E	1060.41	8"	PVC
		W	1034.51	8"	PVC
SAN-3	1044.63	N	1034.49	8"	PVC
		S	1030.16	8"	PVC
SAN-4	1036.04	S	1030.11	8"	PVC
		N	1030.11	8"	PVC

STORM SEWER INLETS					
STRUCT. ID	RIM ELEVATION	INVERT	ELEVATION	PIPE SIZE	PIPE TYPE
INL-1	1052.44	N	1048.53	18"	RCP
INL-2	1042.85	S	1039.21	18"	RCP
		N	1039.19	18"	RCP

BENCHMARKS		
BENCH MARK	ELEVATION	DESCRIPTION
BM-1	1071.25'	BURY BOLT ON HYDRANT NORTHEAST OF PARKING LOT
BM-2	1068.20'	BURY BOLT ON HYDRANT EAST OF BIKE PATH

*JSD DOES NOT GUARANTEE THE BENCHMARK ELEVATIONS LISTED ON THIS MAP ARE ACCURATE AND SHOULD BE VERIFIED PRIOR TO CONSTRUCTION ACTIVITIES.



CREATE THE VISION TELL THE STORY

jsdinc.com

MADISON REGIONAL OFFICE
507 WEST VERONA AVENUE, SUITE 500
VERONA, WISCONSIN 53593
P. 608.848.5060

CLIENT:
UNITYPOINT HEALTH MERITER

CLIENT ADDRESS:
**202 SOUTH PARK STREET
MADISON, WI 53715**

PROJECT:
OPEN SPACE IMPROVEMENTS

PROJECT LOCATION:
**8102 WELLNESS WAY
MADISON, DANE COUNTY
WISCONSIN 53719**

MODIFICATIONS:

#	Date	Description
1		
2		
3		
4		
5		
6		
7		
8		
9		
10		
11		
12		
13		
14		
15		

Prepared By: SMN 04/29/2024

SHEET TITLE:
TOPOGRAPHIC AND UTILITY MAP

SHEET NUMBER:
1 OF 1

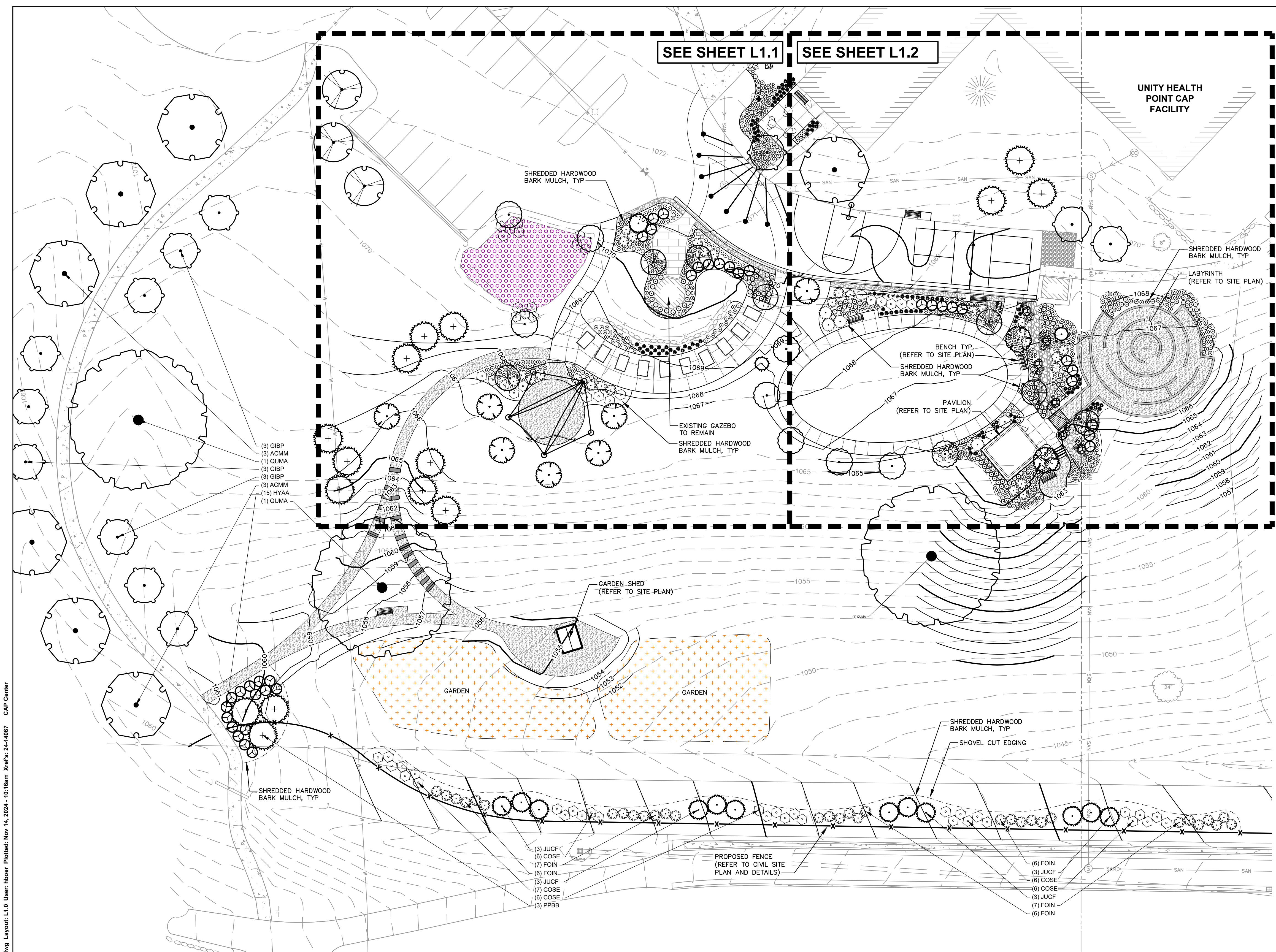
PROJECT NO: 24-14067

File: \\JSD\projects\2024\2414067\DWG\Survey\Sheets\2414067_TU_Map.dwg Layout: 22x34 User: john.kebis Plotted: Jul 03, 2024 - 8:58am Xrefs:

THESE PLANS AND DESIGNS ARE COPYRIGHT PROTECTED AND MAY NOT BE USED IN WHOLE OR IN PART WITHOUT THE WRITTEN CONSENT OF JSD PROFESSIONAL SERVICES, INC.

SEE SHEET L1.1 SEE SHEET L1.2

UNITY HEALTH
POINT CAP
FACILITY



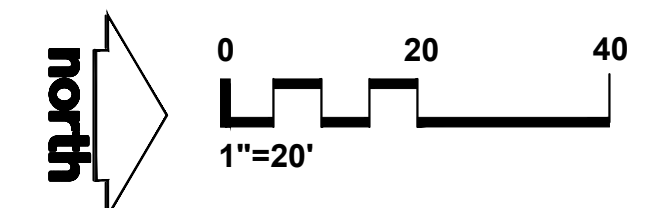
LEGEND

- BUILDING OUTLINE
- EDGE OF PAVEMENT
- 18" CONCRETE RIBBON CURB
- DECOMPOSED SCREENINGS
- PROPOSED 1 FOOT CONTOUR
- PROPOSED 5 FOOT CONTOUR
- EXISTING 1 FOOT CONTOUR
- EXISTING 5 FOOT CONTOUR
- WATERMAIN
- STORM SEWER
- EXISTING SANITARY SEWER
- EXISTING WATERMAIN
- EXISTING STORM SEWER
- FENCE
- STONE MULCH
- NATIVE VEGETATIVE MAT OR PLUG PLANTING ALTERNATIVE
- GARDEN MIX
- ALUMINUM EDGING
- SHOVEL CUT EDGING

PLANT SCHEDULE

SYMBOL	CODE	BOTANICAL / COMMON NAME	CONT	SIZE	QTY
EVERGREEN TREE					
	JUCF	<i>Juniperus chinensis</i> 'Fairview' Fairview Juniper	B & B	6' Ht. (min)	13
	PPBB	<i>Picea pungens</i> 'Baby Blue' Baby Blue Colorado Spruce	B & B	6' Ht. (min)	15
ORNAMENTAL TREES					
	AMGRR	<i>Amelanchier x grandiflora</i> 'Robin Hill' Robin Hill Apple Serviceberry	B & B	6' Ht. (min)	7
	CCJCS	<i>Carpinus caroliniana</i> 'J.N. Select A' Fire King™ American Hornbeam	B & B	4' Ht. (min)	3
	MARR	<i>Malus x 'Royal Raindrops'</i> Royal Raindrops Crabapple	B & B	1.5" Cal	9
OVERSTORY DECIDUOUS TREES					
	ACMM	<i>Acer miyabei</i> 'Morton' State Street™ Miyabe Maple	B & B	2.5" Cal	7
	GIBP	<i>Ginkgo biloba</i> 'PNI 2728' Princeton Sentry® Maidenhair Tree	B & B	2.5" Cal	12
	QBEM	<i>Quercus bicolor</i> 'Bonnie and Mike' Beacon® Oak	B & B	2.5" Cal	9
	QUMA	<i>Quercus macrocarpa</i> Burr Oak	B & B	2.5" Cal	3
UPRIGHT EVERGREEN SHRUB					
	JUUCHI	<i>Juniperus chinensis</i> 'Iowa' Iowa Juniper	B & B	6' Ht. (min)	2
DECIDUOUS SHRUBS					
	COSE	<i>Cornus sericea</i> 'Farrow' Arctic Fire® Red Twig Dogwood	#5	36" Ht. (min)	59
	FOIN	<i>Forsythia x intermedia</i> 'Mindor' Show Off® Forsythia	#5	36" Ht. (min)	64
	HYAA	<i>Hydrangea arborescens</i> 'Annabelle' Annabelle Hydrangea	#5	36" Ht. (min)	37
EVERGREEN SHRUBS					
	JUUCH	<i>Juniperus chinensis</i> 'Sea Green' Sea Green Juniper	B & B	36" Ht. (min)	9
PERENNIALS & GRASSES					
	ALSU	<i>Allium x 'Summer Beauty'</i> Summer Beauty Allium	#1	18" Ht. (min)	117
	CANE	<i>Calamintha nepeta</i> 'Montrose White' Montrose White Catmint	#1	18" Ht. (min)	172
	FCAI	<i>Festuca x 'Cool as Ice'</i> Cool as Ice Blue Fescue	#1	18" Ht. (min)	13
	PAVIN	<i>Panicum virgatum</i> 'Northwind' Northwind Switch Grass	#1	24" Ht. (min)	97
	SYLS	<i>Salvia yangii</i> 'Little Spire' Little Spire Russian Sage	#1	18" Ht. (min)	101
	SEAU	<i>Sesleria autumnalis</i> Autumn Moor Grass	#1	18" Ht. (min)	113
	SBSC	<i>Stachys byzantina</i> 'Silver Carpet' Silver Carpet Lamb's Ears	#1	8" Ht. (min)	60
	SNWB	<i>Symphoricarpos novi-belgii</i> 'Wood's Blue' Wood's Blue New York Aster	#1	18" Ht. (min)	113

1 OVERALL LANDSCAPE PLAN
L1.0



JSD

CREATE THE VISION TELL THE STORY

jsdinc.com

MADISON REGIONAL OFFICE
507 WEST VERONA AVENUE, SUITE 500
VERONA, WISCONSIN 53593
P. 608.848.5060

CLIENT:
UnityPoint Health - Meriter

CLIENT ADDRESS:
**202 South Park Street
Madison, WI 53715**

PROJECT:
**CAP Facility
Open Space Improvements**

PROJECT LOCATION:
**8102 Wellness Way
Madison, WI 53719**

PLAN MODIFICATIONS:

#	Date:	Description:
1	10.07.2024	LAND USE/DC SUBMITTAL
2		
3		
4		
5		
6		
7		
8		
9		
10		
11		
12		
13		
14		
15		

Designed By: **GW/CHG/HB**

Reviewed By: **SD/KJY**

Approved By:

SHEET TITLE:
**LANDSCAPE PLAN:
OVERALL**

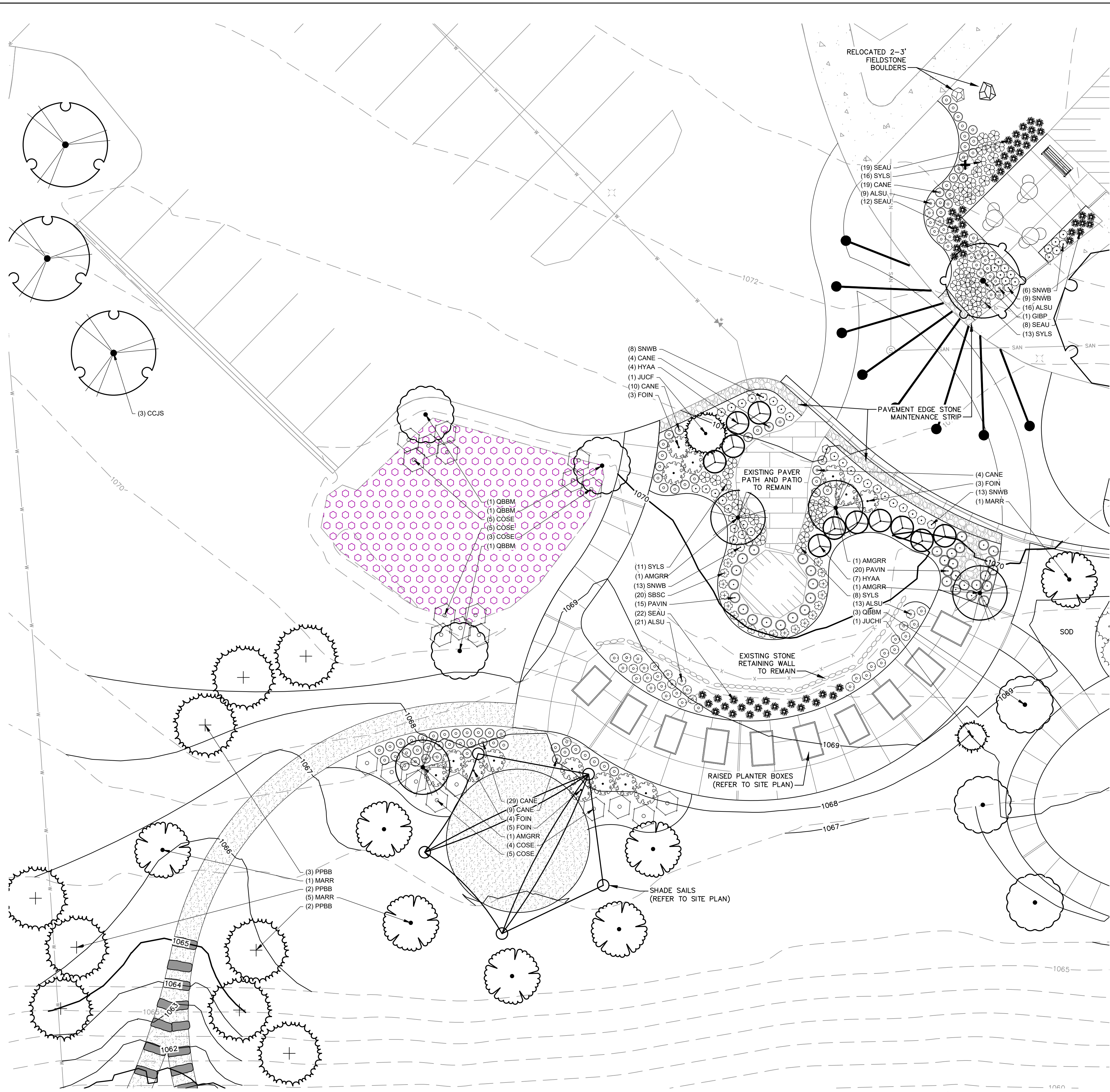
SHEET NUMBER:
L1.0

JSD PROJECT NO: 24-14067

File: \\JSD\Projects\2024\2414067\DWG\Landscapes\Sheets\24-14067_Landscape Plan.dwg Layout: L1.0 User: rborer Plotted: Nov 14, 2024 - 10:16am Xrefs: 24-14067 CAP Center

THESE PLANS AND DESIGNS ARE COPYRIGHT PROTECTED AND MAY NOT BE USED IN WHOLE OR IN PART WITHOUT THE WRITTEN CONSENT OF JSD PROFESSIONAL SERVICES, INC.

File: \\JSD\Projects\2024\24-14067\DWG\Landscape\Sheets\24-14067\Landscape Plan.dwg Layout: L1.1 User: jhoon Plotted: Nov 14, 2024 - 10:16am Xref's: 24-14067 CAP Center



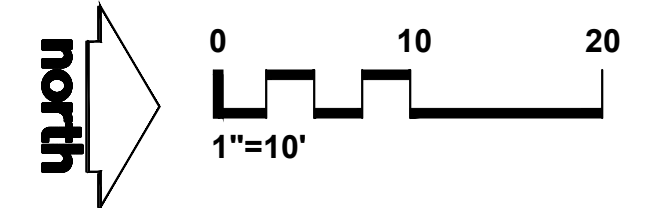
LEGEND

- BUILDING OUTLINE
- EDGE OF PAVEMENT
- 18" CONCRETE RIBBON CURB
- DECOMPOSED SCREENINGS
- PROPOSED 1 FOOT CONTOUR
- PROPOSED 5 FOOT CONTOUR
- EXISTING 1 FOOT CONTOUR
- EXISTING 5 FOOT CONTOUR
- WATERMAIN
- STORM SEWER
- EXISTING SANITARY SEWER
- EXISTING WATERMAIN
- EXISTING STORM SEWER
- FENCE
- STONE MULCH
- NATIVE VEGETATIVE MAT OR PLUG PLANTING ALTERNATIVE
- GARDEN MIX
- ALUMINUM EDGING
- SHOVEL CUT EDGING

PLANT SCHEDULE

SYMBOL	CODE	BOTANICAL / COMMON NAME	CONT	SIZE	QTY
EVERGREEN TREE					
	JUCF	<i>Juniperus chinensis</i> 'Fairview' Fairview Juniper	B & B	6' Ht. (min)	13
	PPBB	<i>Picea pungens</i> 'Baby Blue' Baby Blue Colorado Spruce	B & B	6' Ht. (min)	15
ORNAMENTAL TREES					
	AMGR	<i>Amelanchier x grandiflora</i> 'Robin Hill' Robin Hill Apple Serviceberry	B & B	6' Ht. (min)	7
	CCJS	<i>Carpinus caroliniana</i> 'J.N. Select A' Fire King™ American Hornbeam	B & B	4' Ht. (min)	3
	MARR	<i>Malus x 'Royal Raindrops'</i> Royal Raindrops Crabapple	B & B	1.5" Cal	9
OVERSTORY DECIDUOUS TREES					
	ACMM	<i>Acer miyabei</i> 'Morton' State Street™ Miyabe Maple	B & B	2.5" Cal	7
	GIBP	<i>Ginkgo biloba</i> 'PMI 2728' Princeton Sentry® Maidenhair Tree	B & B	2.5" Cal	12
	QBBM	<i>Quercus bicolor</i> 'Bonnie and Mike' Beacon® Oak	B & B	2.5" Cal	9
	QUMA	<i>Quercus macrocarpa</i> Burr Oak	B & B	2.5" Cal	3
UPRIGHT EVERGREEN SHRUB					
	JUCHI	<i>Juniperus chinensis</i> 'Iowa' Iowa Juniper	B & B	6' Ht. (min)	2
DECIDUOUS SHRUBS					
	COSE	<i>Cornus sericea</i> 'Farrow' Arctic Fire® Red Twig Dogwood	#5	36" Ht. (min)	59
	FOIN	<i>Forsythia x intermedia</i> 'Mindor' Show Off® Forsythia	#5	36" Ht. (min)	64
	HYAA	<i>Hydrangea arborescens</i> 'Annabelle' Annabelle Hydrangea	#5	36" Ht. (min)	37
EVERGREEN SHRUBS					
	JUCH	<i>Juniperus chinensis</i> 'Sea Green' Sea Green Juniper	B & B	36" Ht. (min)	9
PERENNIALS & GRASSES					
	ALSU	<i>Allium x 'Summer Beauty'</i> Summer Beauty Allium	#1	18" Ht. (min)	117
	CANE	<i>Catantha nepeta</i> 'Monrose White' Monrose White Catmint	#1	18" Ht. (min)	172
	FCAI	<i>Festuca x 'Cool as Ice'</i> Cool as Ice Blue Fescue	#1	18" Ht. (min)	13
	PAVIN	<i>Panicum virgatum</i> 'Northwind' Northwind Switch Grass	#1	24" Ht. (min)	97
	SYLS	<i>Salvia yangii</i> 'Little Spire' Little Spire Russian Sage	#1	18" Ht. (min)	101
	SEAU	<i>Sesleria autumnalis</i> Autumn Moor Grass	#1	18" Ht. (min)	113
	SBSC	<i>Stachys byzantina</i> 'Silver Carpet' Silver Carpet Lamb's Ears	#1	8" Ht. (min)	60
	SNWB	<i>Symphyotrichum novi-belgii</i> 'Wood's Blue' Wood's Blue New York Aster	#1	18" Ht. (min)	113

1 LANDSCAPE PLAN: SOUTH
L1.1



CREATE THE VISION TELL THE STORY

jsdinc.com

MADISON REGIONAL OFFICE
507 WEST VERONA AVENUE, SUITE 500
VERONA, WISCONSIN 53593
P. 608.848.5060

CLIENT:
UnityPoint Health - Meriter

CLIENT ADDRESS:
202 South Park Street
Madison, WI 53715

PROJECT:
CAP Facility
Open Space Improvements

PROJECT LOCATION:
8102 Wellness Way
Madison, WI 53719

PLAN MODIFICATIONS:	
#	Description:
1	10.07.2024 LAND USE/DC SUBMITTAL
2	
3	
4	
5	
6	
7	
8	
9	
10	
11	
12	
13	
14	
15	

Designed By: GW/CHG/HB
Reviewed By: SD/KJY
Approved By:

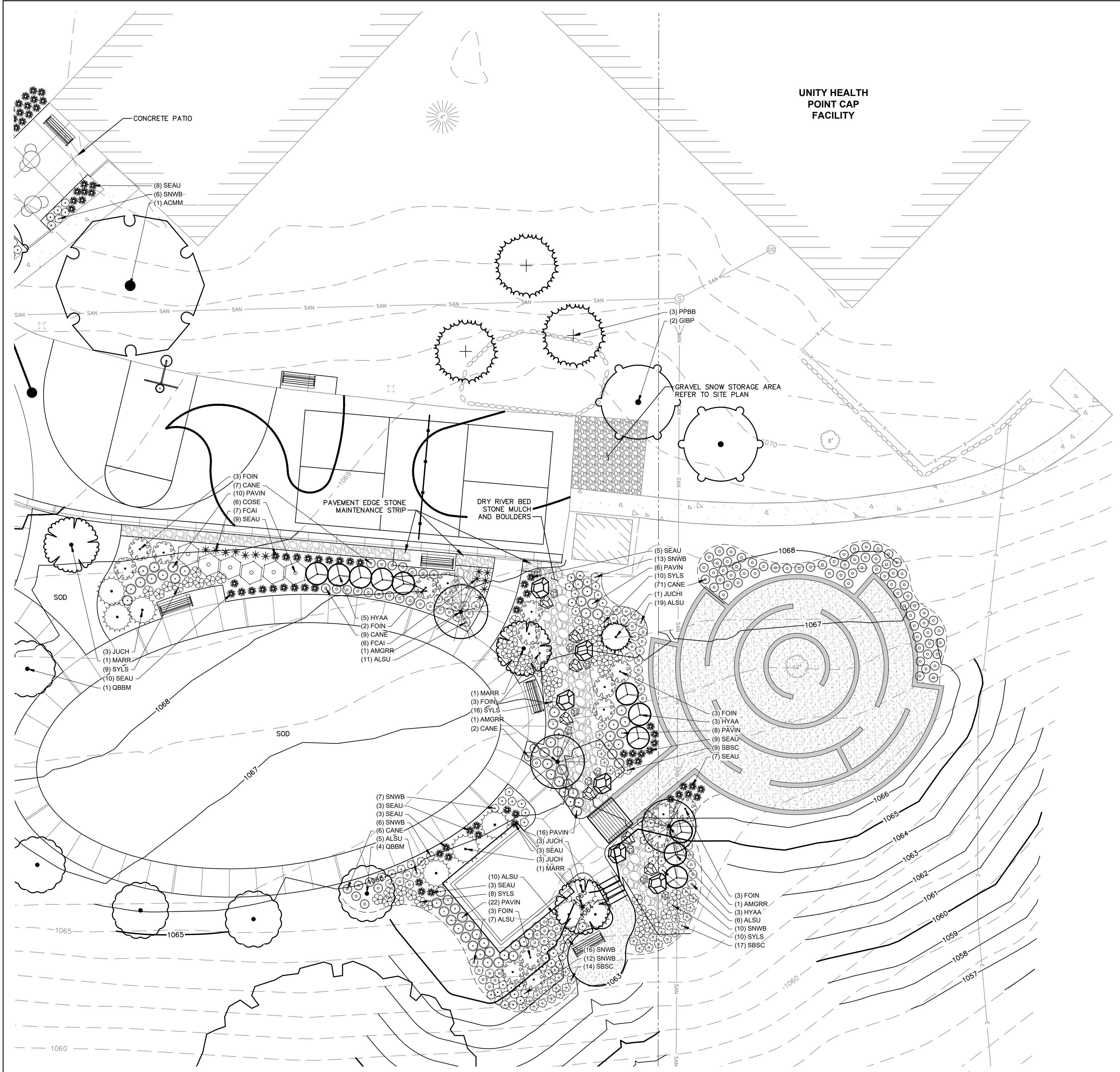
SHEET TITLE:
LANDSCAPE PLAN:
SOUTH

SHEET NUMBER:
L1.1

JSD PROJECT NO: 24-14067

THESE PLANS AND DESIGNS ARE COPYRIGHT PROTECTED AND MAY NOT BE USED IN WHOLE OR IN PART WITHOUT THE WRITTEN CONSENT OF JSD PROFESSIONAL SERVICES, INC.

File: \\JSD\Projects\2024\2414687\DWG\Landscape\Sheets\24-14687 Landscape Plan.dwg Layout: L1.2 User: thooner Plotted: Nov 14, 2024 - 10:16am Xrefs: 24-14687 CAP Center



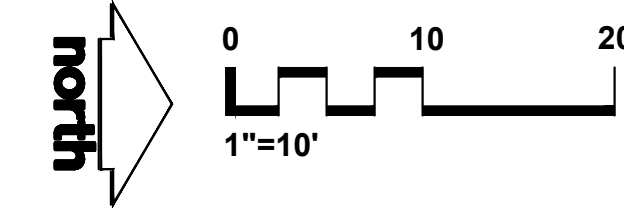
LEGEND

- BUILDING OUTLINE
- 18" CONCRETE RIBBON CURB
- DECOMPOSED SCREENINGS
- 959 PROPOSED 1 FOOT CONTOUR
- 960 PROPOSED 5 FOOT CONTOUR
- 959 EXISTING 1 FOOT CONTOUR
- 960 EXISTING 5 FOOT CONTOUR
- WATERMAIN
- STORM SEWER
- SAN EXISTING SANITARY SEWER
- W EXISTING WATERMAIN
- ST EXISTING STORM SEWER
- FENCE
- STONE MULCH
- NATIVE VEGETATIVE MAT OR PLUG PLANTING ALTERNATIVE
- GARDEN MIX
- ALUMINUM EDGING
- SHOVEL CUT EDGING

PLANT SCHEDULE

SYMBOL	CODE	BOTANICAL / COMMON NAME	CONT	SIZE	QTY
EVERGREEN TREE					
	JUCF	<i>Juniperus chinensis</i> 'Fairview' Fairview Juniper	B & B	6' Ht. (min)	13
	PPBB	<i>Picea pungens</i> 'Baby Blue' Baby Blue Colorado Spruce	B & B	6' Ht. (min)	15
ORNAMENTAL TREES					
	AMGR	<i>Amelanchier x grandiflora</i> 'Robin Hill' Robin Hill Apple Serviceberry	B & B	6' Ht. (min)	7
	CCJS	<i>Carpinus caroliniana</i> 'J.N. Select A' Fire King™ American Hornbeam	B & B	4' Ht. (min)	3
	MARR	<i>Malus x</i> 'Royal Raindrops' Royal Raindrops Crabapple	B & B	1.5" Cal	9
OVERSTORY DECIDUOUS TREES					
	ACMM	<i>Acer miyabei</i> 'Morton' State Street™ Miyabe Maple	B & B	2.5" Cal	7
	GIBP	<i>Ginkgo biloba</i> 'PNI 2720' Princeton Sentry® Maidenhair Tree	B & B	2.5" Cal	12
	QBBM	<i>Quercus bicolor</i> 'Bonnie and Mike' Beacon® Oak	B & B	2.5" Cal	9
	QUMA	<i>Quercus macrocarpa</i> Burr Oak	B & B	2.5" Cal	3
UPRIGHT EVERGREEN SHRUB					
	JUCHI	<i>Juniperus chinensis</i> 'Iowa' Iowa Juniper	B & B	6' Ht. (min)	2
DECIDUOUS SHRUBS					
	COSE	<i>Cornus sericea</i> 'Farrow' Arctic Fire® Red Twig Dogwood	#5	36" Ht. (min)	59
	FOIN	<i>Forsythia x intermedia</i> 'Midor' Snow Day® Forsythia	#5	36" Ht. (min)	64
	HYAA	<i>Hydrangea arborescens</i> 'Annabelle' Annabelle Hydrangea	#5	36" Ht. (min)	37
EVERGREEN SHRUBS					
	JUCH	<i>Juniperus chinensis</i> 'Sea Green' Sea Green Juniper	B & B	36" Ht. (min)	9
PERENNIALS & GRASSES					
	ALSU	<i>Allium x</i> 'Summer Beauty' Summer Beauty Allium	#1	18" Ht. (min)	117
	CANE	<i>Calamintha nepeta</i> 'Montrose White' Montrose White Catmint	#1	18" Ht. (min)	172
	FCAI	<i>Festuca x</i> 'Cool as Ice' Cool as Ice Blue Fescue	#1	18" Ht. (min)	13
	PAVIN	<i>Panicum virgatum</i> 'Northwind' Northwind Switch Grass	#1	24" Ht. (min)	97
	SYLS	<i>Salvia yangii</i> 'Little Spire' Little Spire Russian Sage	#1	18" Ht. (min)	101
	SEAU	<i>Sesleria autumnalis</i> Autumn Moor Grass	#1	18" Ht. (min)	113
	SBSC	<i>Stachys byzantina</i> 'Silver Carpet' Silver Carpet Lamb's Ears	#1	8" Ht. (min)	60
	SNWB	<i>Symphyotrichum novi-belgii</i> 'Wood's Blue' Wood's Blue New York Aster	#1	18" Ht. (min)	113

1 LANDSCAPE PLAN: NORTH
L1.2



CREATE THE VISION TELL THE STORY

jsdinc.com

MADISON REGIONAL OFFICE
507 WEST VERONA AVENUE, SUITE 500
VERONA, WISCONSIN 53593
P. 608.848.5060

CLIENT:
UnityPoint Health - Meriter

CLIENT ADDRESS:
**202 South Park Street
Madison, WI 53715**

PROJECT:
**CAP Facility
Open Space Improvements**

PROJECT LOCATION:
**8102 Wellness Way
Madison, WI 53719**

PLAN MODIFICATIONS:

#	Date:	Description:
1	10.07.2024	LAND USE/DC SUBMITTAL
2		
3		
4		
5		
6		
7		
8		
9		
10		
11		
12		
13		
14		
15		

Designed By: GW/CHG/HB
Reviewed By: SD/KJY

Approved By:
SHEET TITLE:
**LANDSCAPE PLAN:
NORTH**

SHEET NUMBER:
L1.2

JSD PROJECT NO: 24-14687

THESE PLANS AND DESIGNS ARE COPYRIGHT PROTECTED AND MAY NOT BE USED IN WHOLE OR IN PART WITHOUT THE WRITTEN CONSENT OF JSD PROFESSIONAL SERVICES, INC.