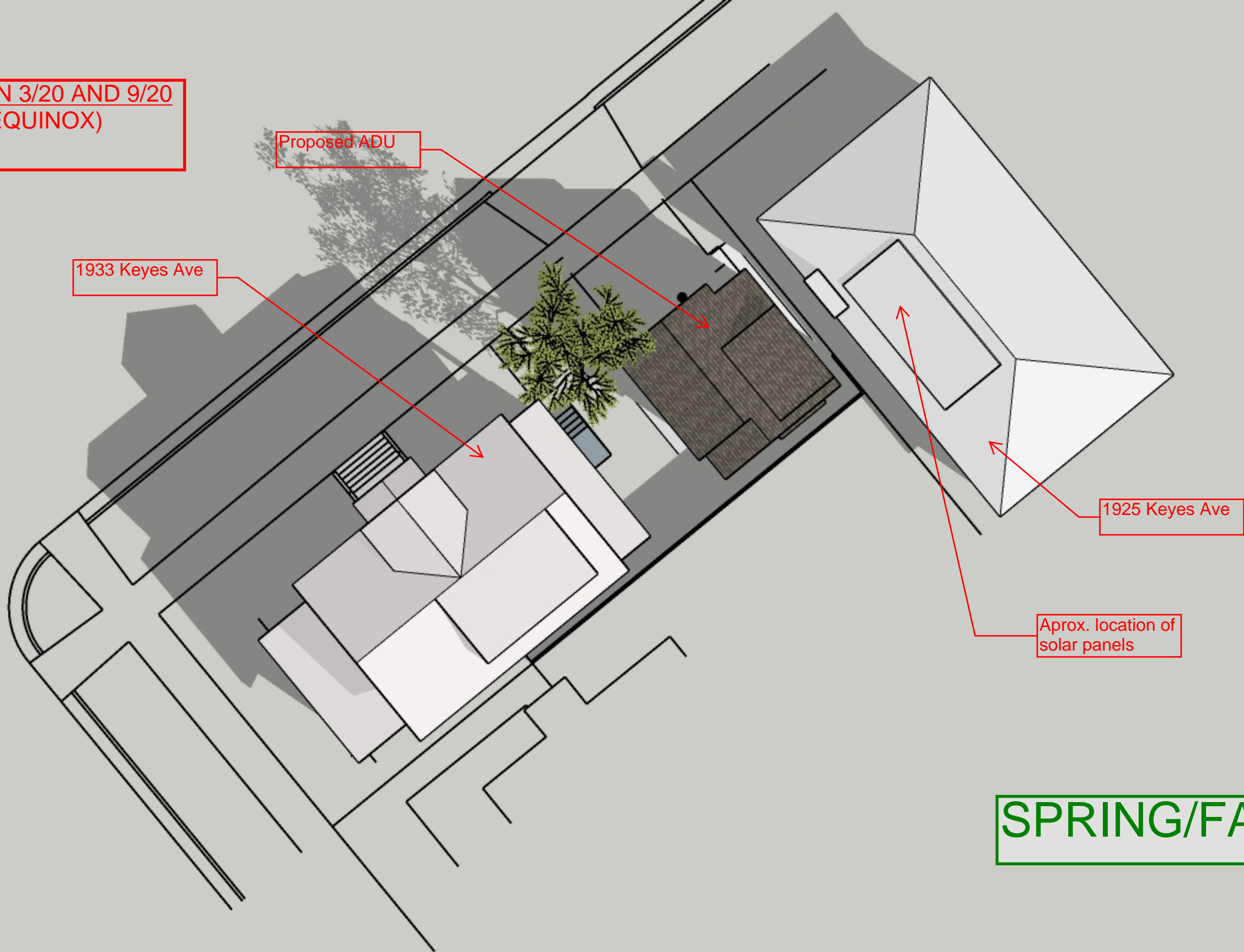


SHADOWS @ 9AM ON 3/20 AND 9/20
(SPRING AND FALL EQUINOX)



SPRING/FALL

SHADOWS @ 12PM ON 3/20 AND 9/20
(SPRING AND FALL EQUINOX)

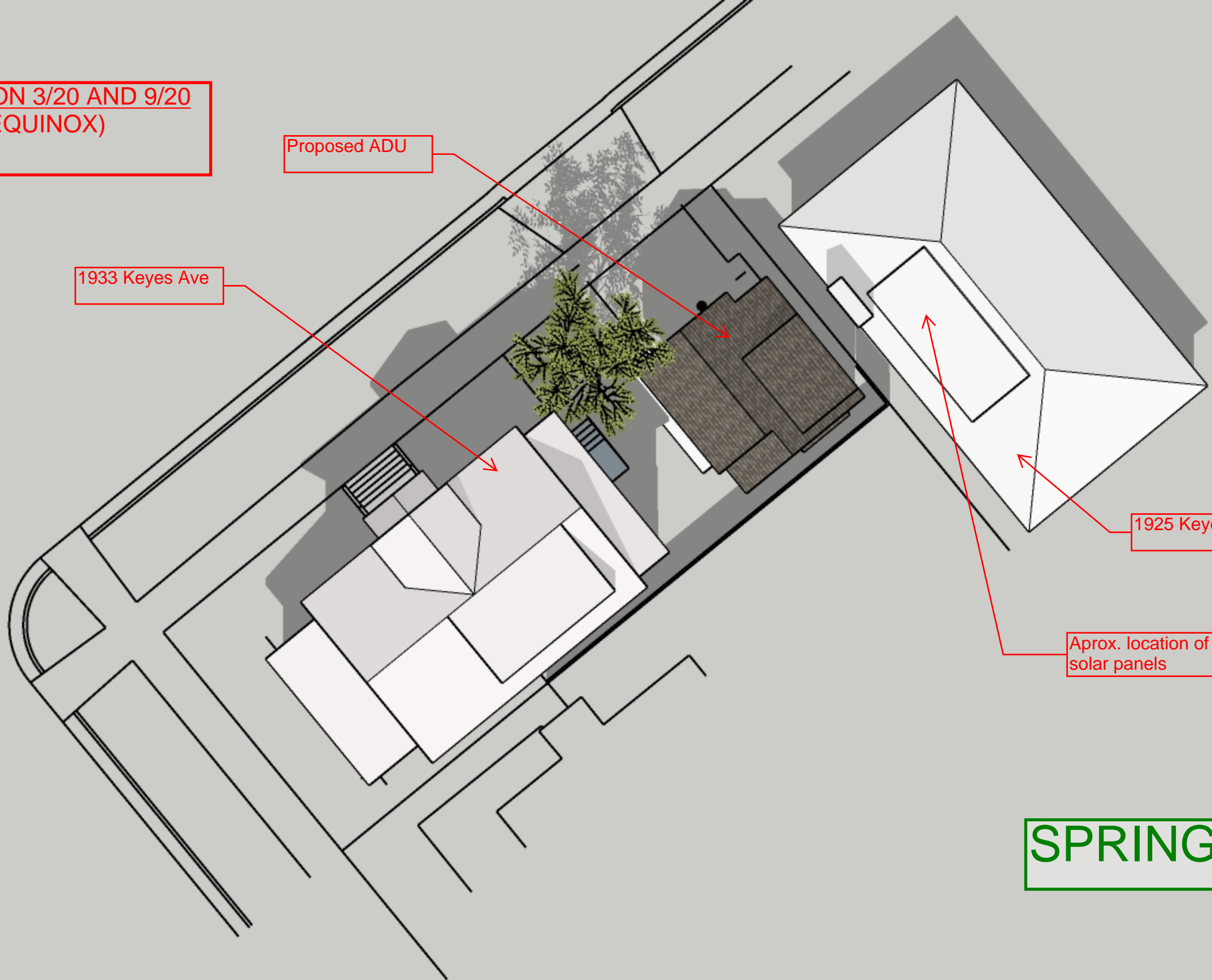
Proposed ADU

1933 Keyes Ave

1925 Keyes Ave

Aprox. location of solar panels

SPRING/FALL



SHADOWS @ 4PM ON 3/20 AND 9/20
(SPRING AND FALL EQUINOX)

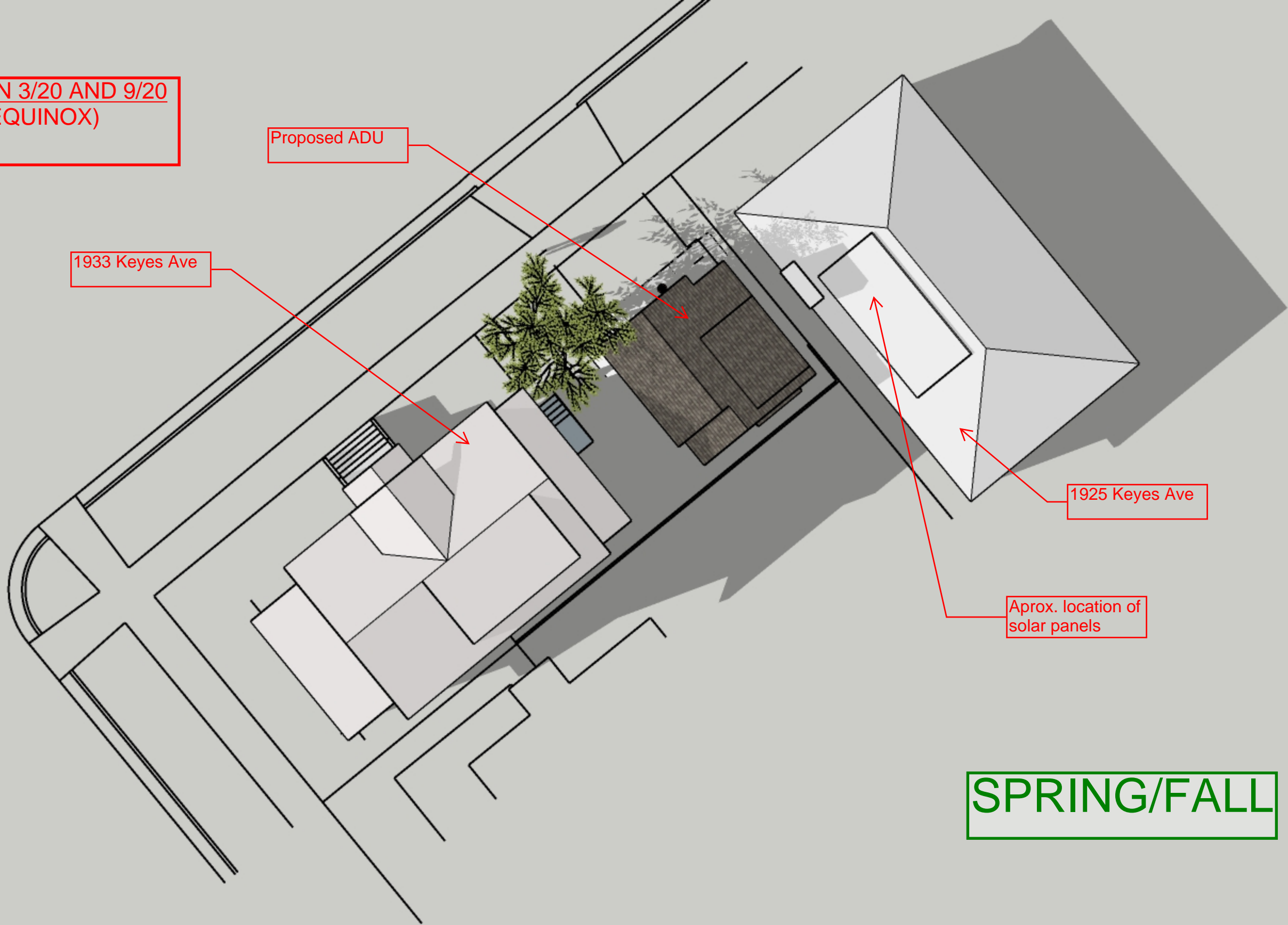
Proposed ADU

1933 Keyes Ave

1925 Keyes Ave

Aprox. location of
solar panels

SPRING/FALL



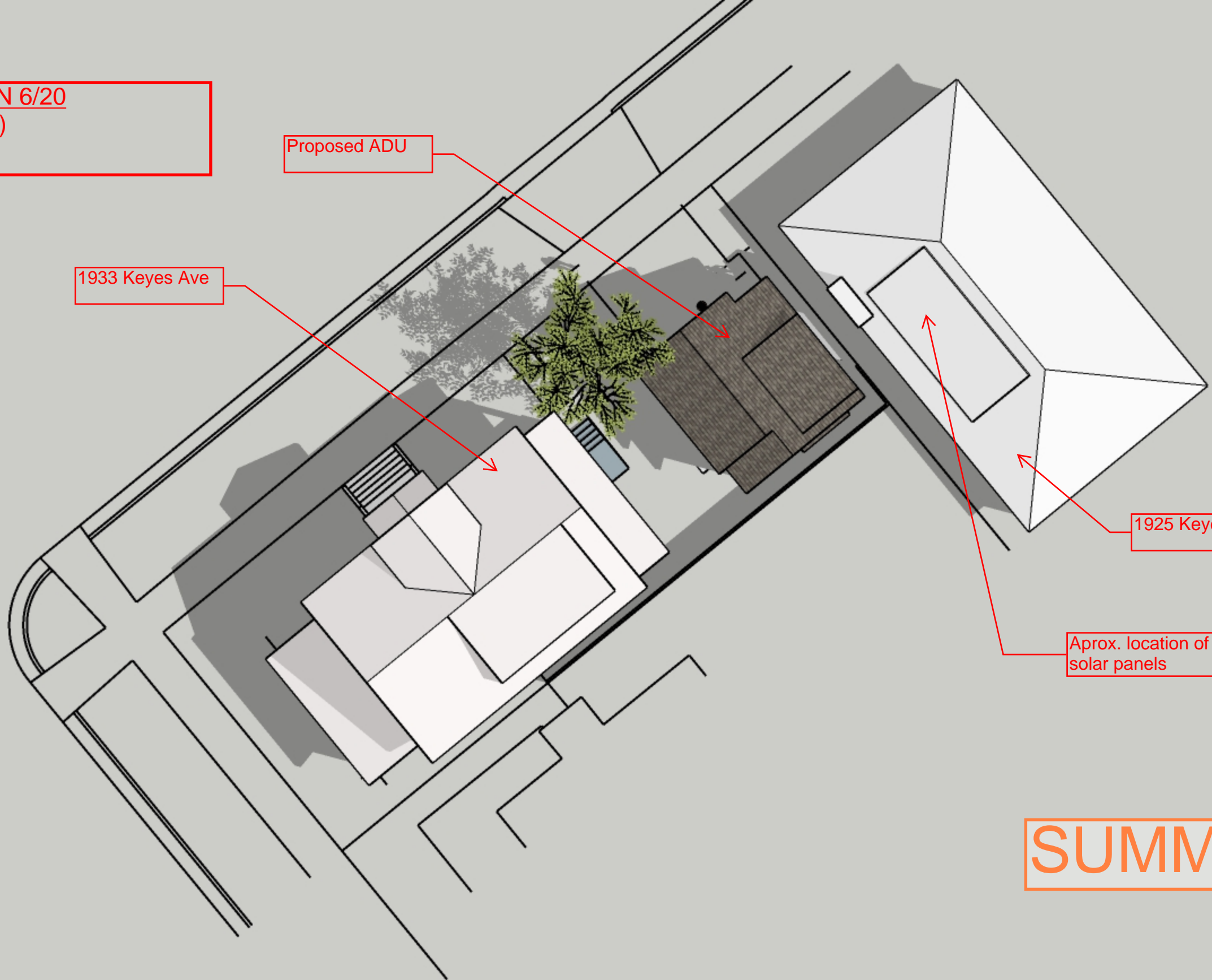
SHADOWS @ 9AM ON 6/20
(SUMMER SOLSTICE)

Proposed ADU

1933 Keyes Ave

1925 Keyes Ave

Aprox. location of solar panels



SUMMER

SHADOWS @ 12PM ON 6/20
(SUMMER SOLSTICE)

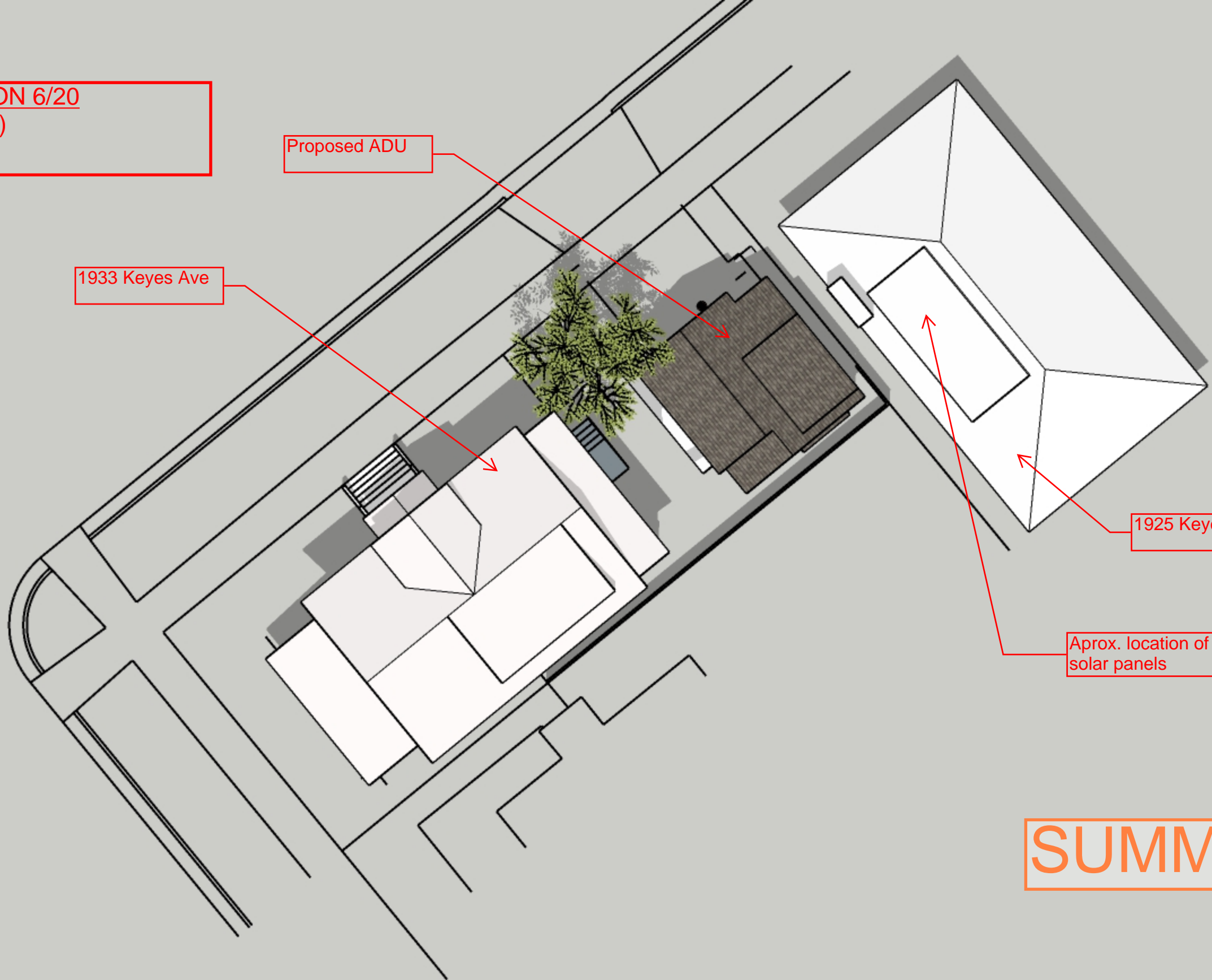
Proposed ADU

1933 Keyes Ave

1925 Keyes Ave

Aprox. location of solar panels

SUMMER



SHADOWS @ 4PM ON 6/20
(SUMMER SOLSTICE)

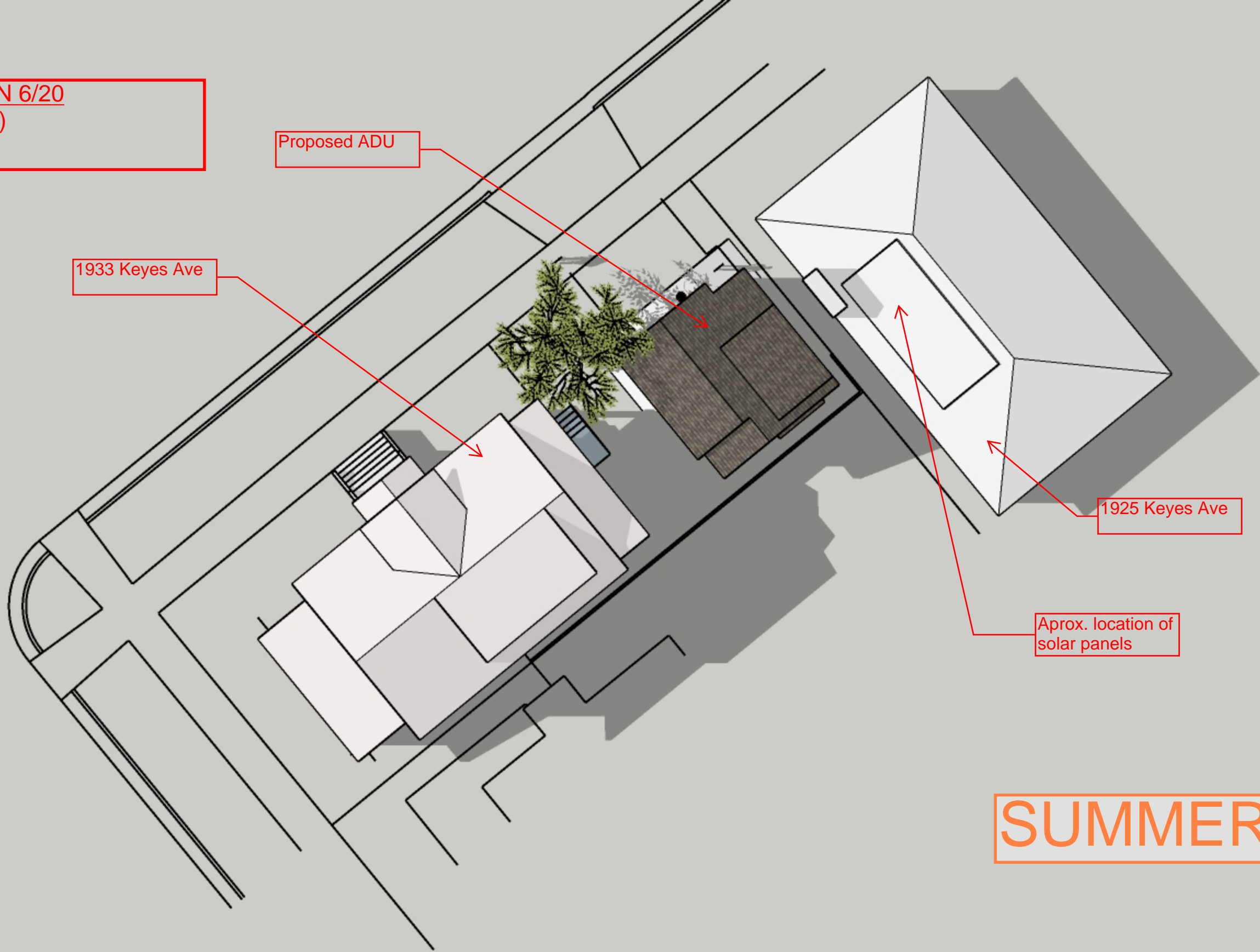
Proposed ADU

1933 Keyes Ave

1925 Keyes Ave

Aprox. location of
solar panels

SUMMER



SHADOWS @ 9AM ON 12/20
(WINTER SOLSTICE)

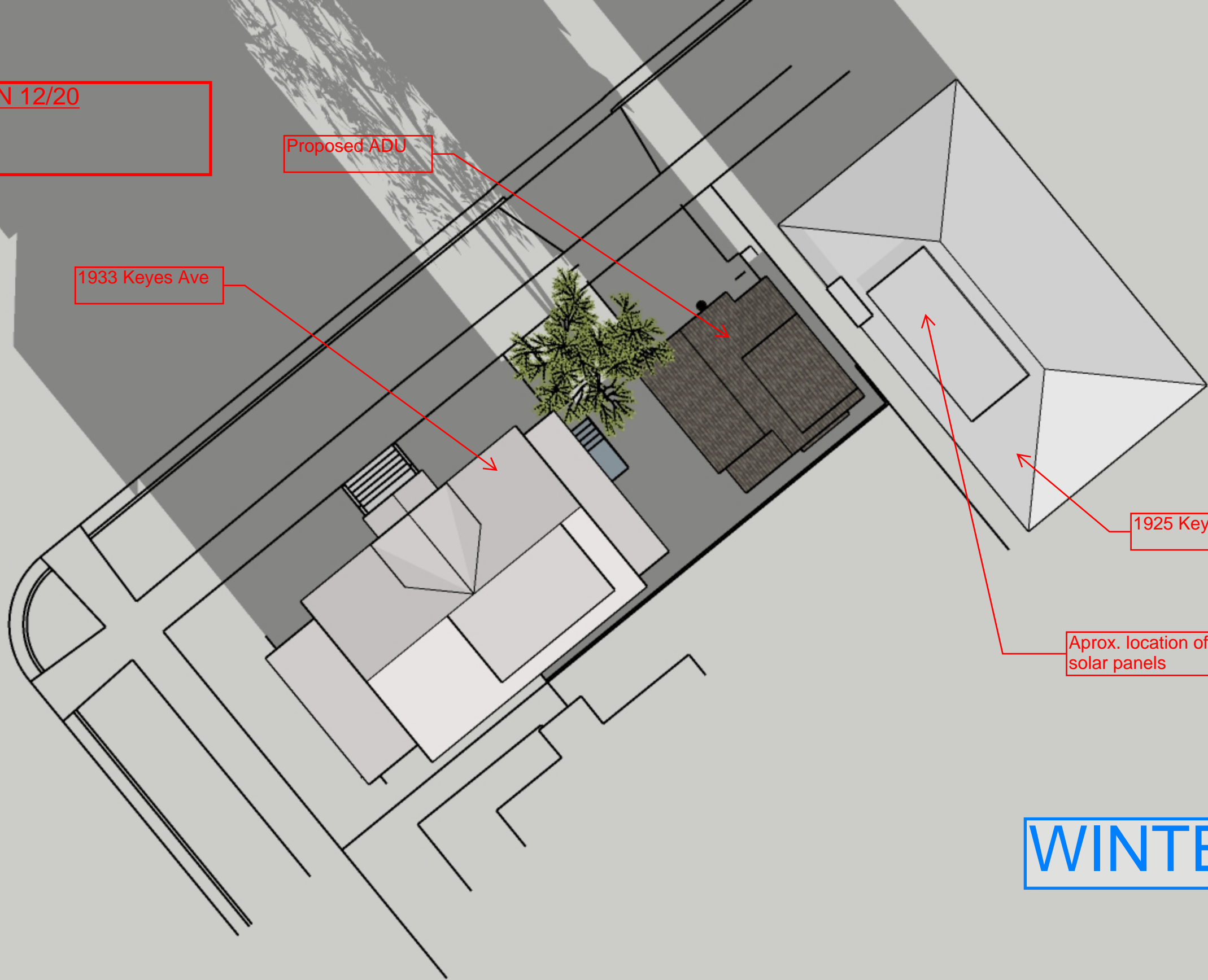
Proposed ADU

1933 Keyes Ave

1925 Keyes Ave

Aprox. location of
solar panels

WINTER



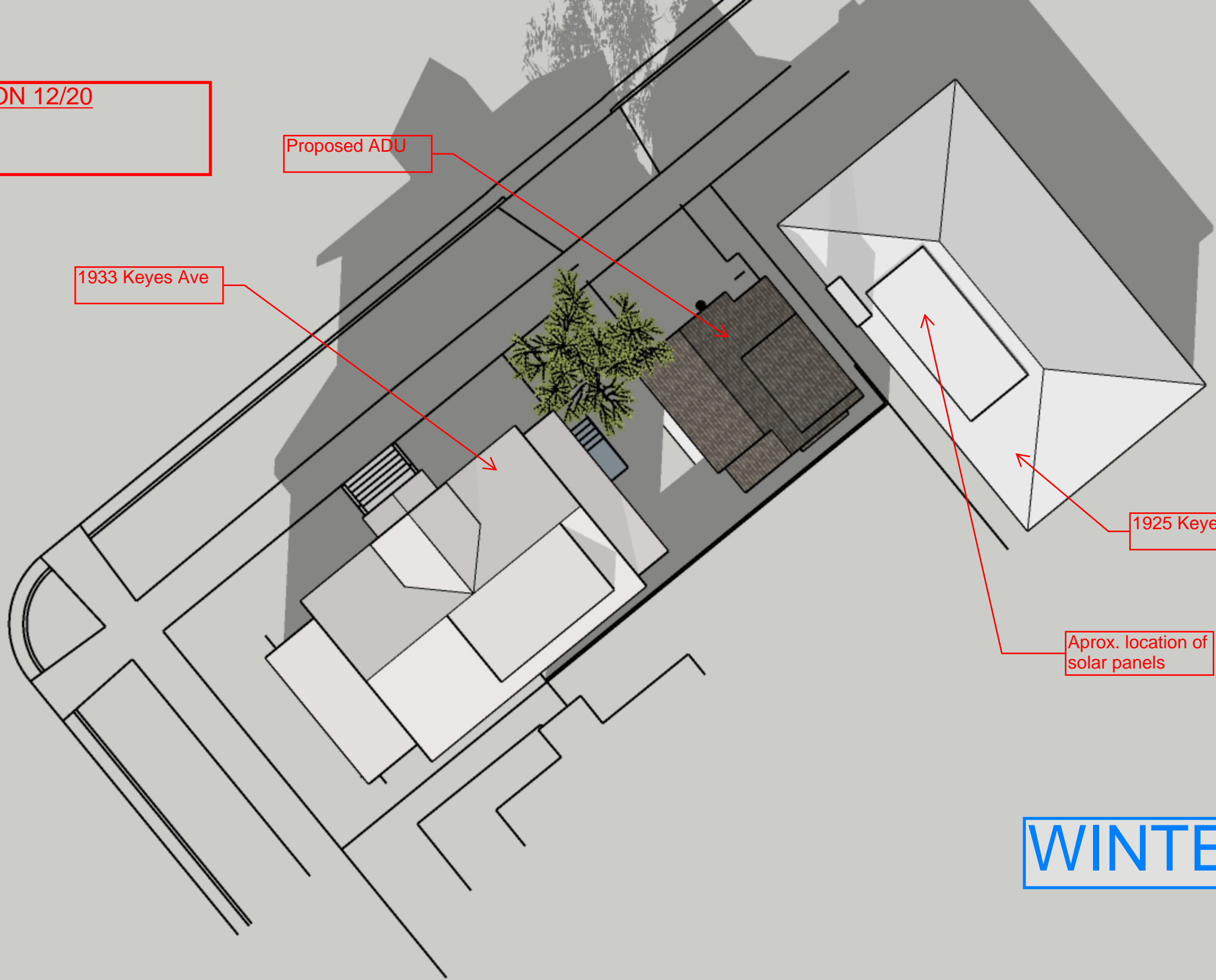
SHADOWS @ 12PM ON 12/20
(WINTER SOLSTICE)

Proposed ADU

1933 Keyes Ave

1925 Keyes Ave

Aprox. location of solar panels



WINTER

SHADOWS @ 4PM ON 12/20
(WINTER SOLSTICE)

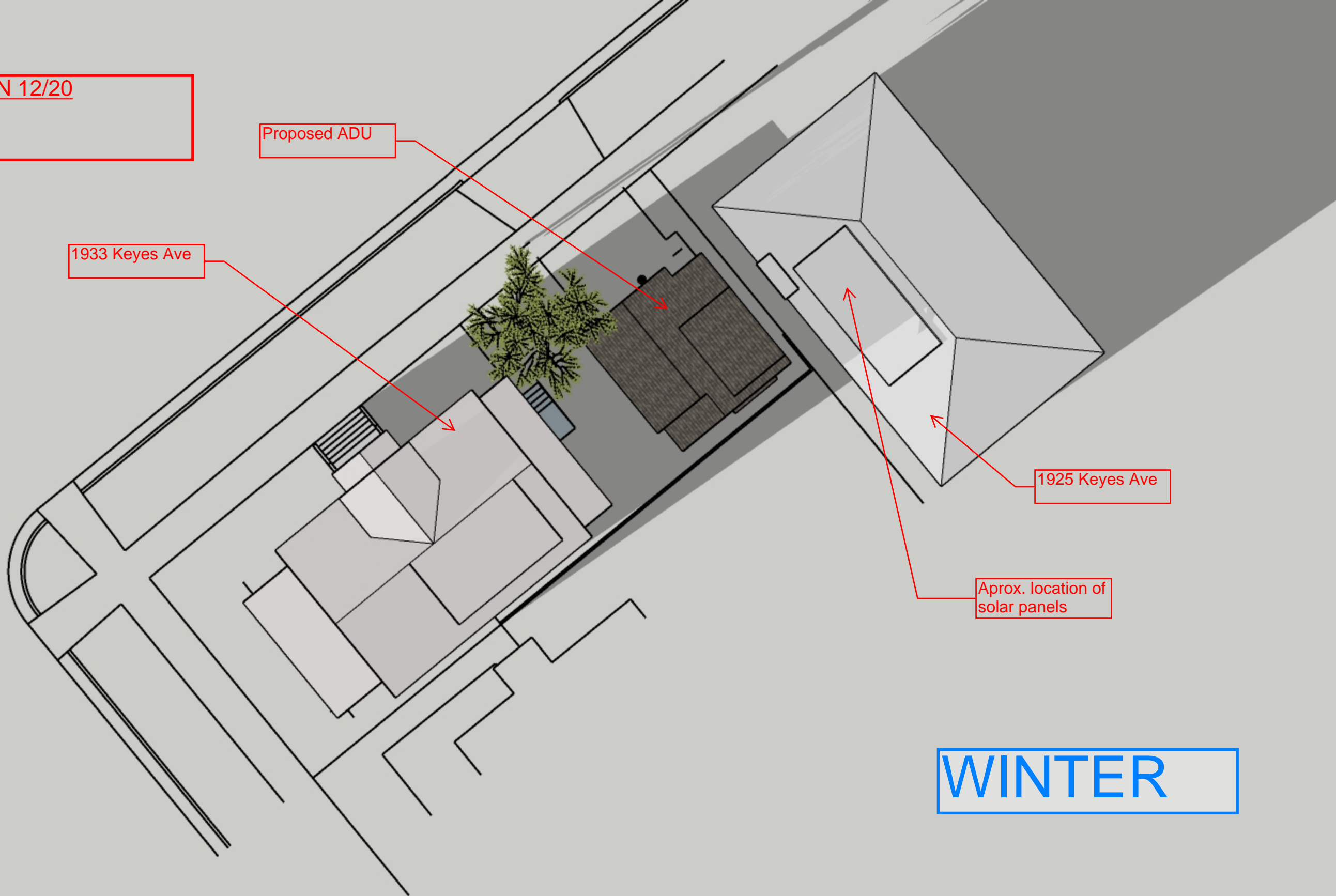
Proposed ADU

1933 Keyes Ave

1925 Keyes Ave

Aprox. location of
solar panels

WINTER



SHADOWS @ 4PM ON 12/20
(WINTER SOLSTICE)

ADU has been removed to
show that the predominate
shadows are from the existing
house at 1933 Keyes

1933 Keyes Ave

1925 Keyes Ave

Aprox. location of
solar panels

WINTER

