

121 East Wilson Street

Urban Design Commission Presentation
March 15, 2023



QUAD
CAPITAL PARTNERS



BUILDING DETAILS

Residential Unit Mix

Studios	73	22%
1 Bedrooms	164	49%
2 Bedrooms	86	25%
3 Bedrooms	14	4%
<hr/>		
	337	

Building Height

14 Stories

Parking / Bikes

344 Stalls / 346 Bikes

First Floor Retail

19,445 SF

First Floor Terrace

10,400 SF









Outdoor Plaza Rendering - Current Design













Outdoor Plaza Rendering









Wilson Street Façade – Current Design







PRELIMINARY
NOT FOR CONSTRUCTION

121 E. Wilson Street
Quad Capital Partners
Madison, WI

2021.27.00

DATE	REVISIONS

**BUILDING
MATERIALS**

121 East Wilson Street

Urban Design Commission Presentation
March 15, 2023



QUAD
CAPITAL PARTNERS





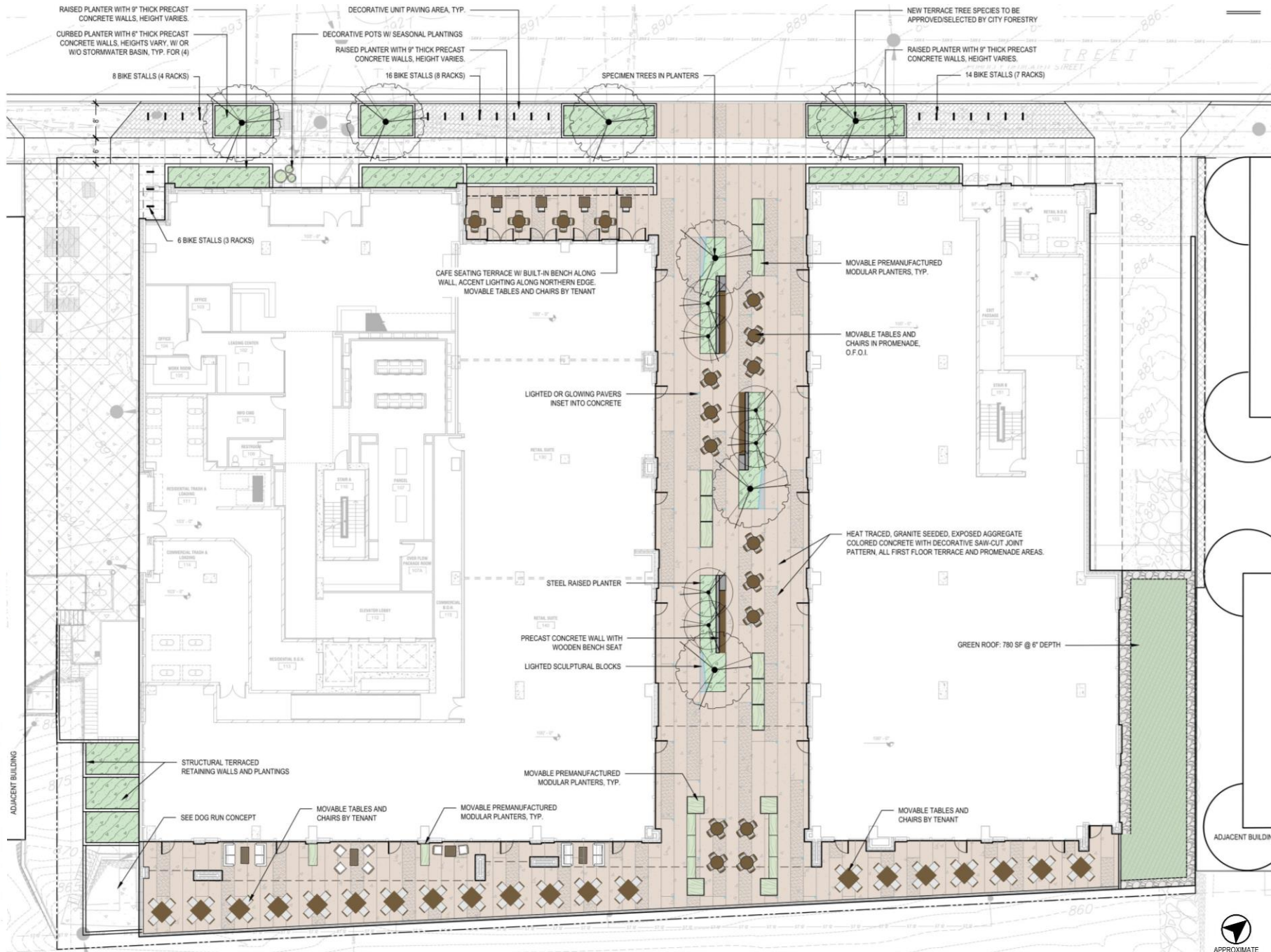
Lighted Sculptural Blocks



Promenade Planters Seating



Heated Decorative Concrete





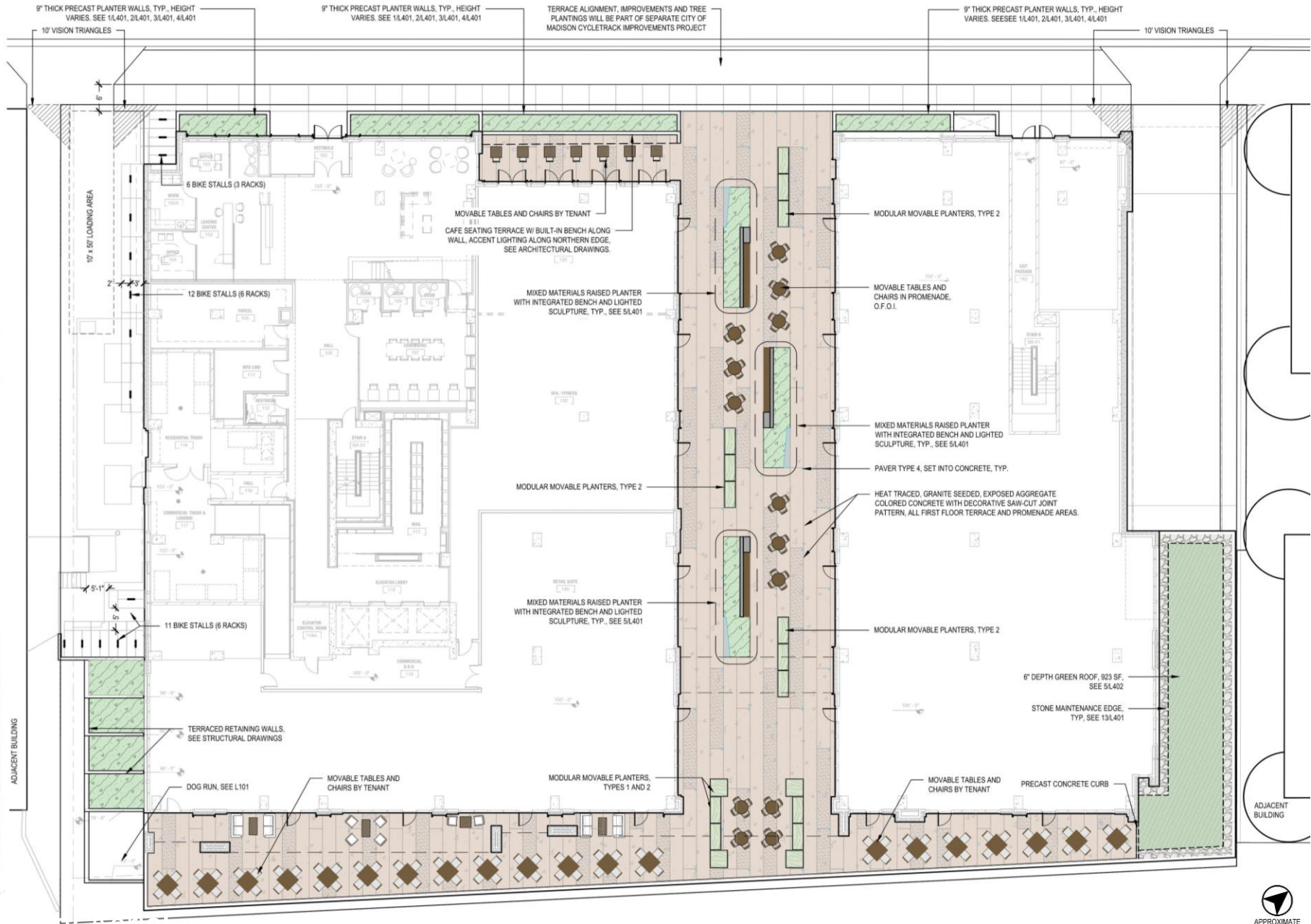
Lighted Sculptural Blocks



Promenade Planters Seating



Heated Decorative Concrete



PRELIMINARY
NOT FOR CONSTRUCTION

121 E. Wilson Street
Quad Capital Partners

Madison, WI

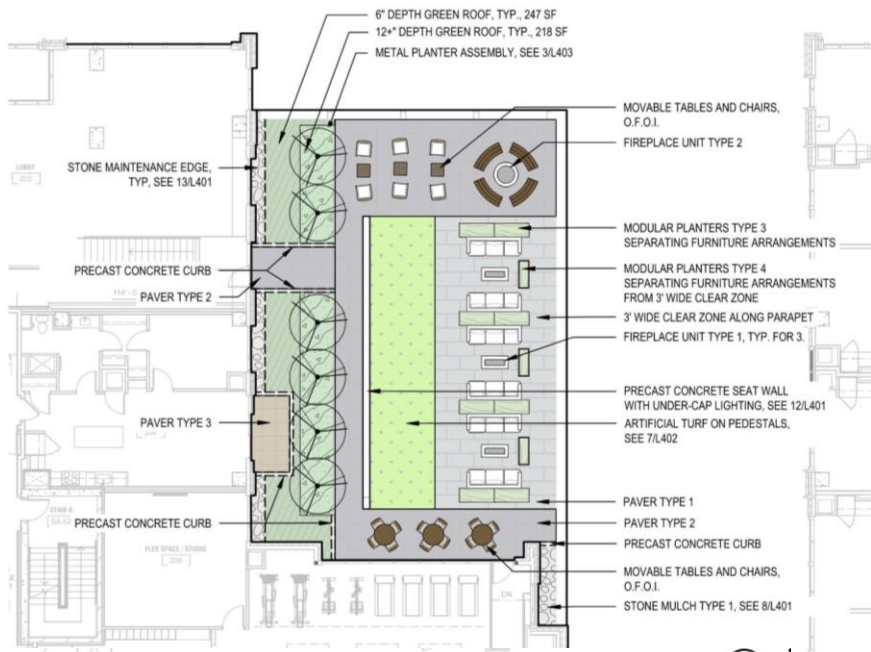
2021.27.00

Date	Issuance/Revisions	Symbol
08/08/2022	LAND USE & UDC APPLICATION	

FIRST FLOOR
OVERVIEW PLAN

L100





LEGEND

- MIXED PERENNIAL/SHRUB PLANTINGS, SEE L201
- EXTENSIVE GREEN ROOF WITH SEDUM BLANKET AND PLUGS, 6" DEPTH
- ARTIFICIAL TURF ON PEDESTALS
- STONE MULCH
- CONCRETE UNIT PAVERS ON PEDESTALS
- MODULAR PLANTERS
- FIREPLACE UNITS
- L-SHAPED METAL EDGE
- PRECAST CONCRETE CURB

SUN [FULL TO PART SUN] SEDUM CARPET SPECIES COMPOSITION: SUBJECT TO AVAILABILITY, THE SEDUM CARPET WILL BE COMPOSED OF THE FOLLOWING SPECIES IN APPROXIMATELY EQUAL QUANTITIES. PRE-GROWN AND DELIVERED TO THE SITE AS A SOD-LIKE MATERIAL:

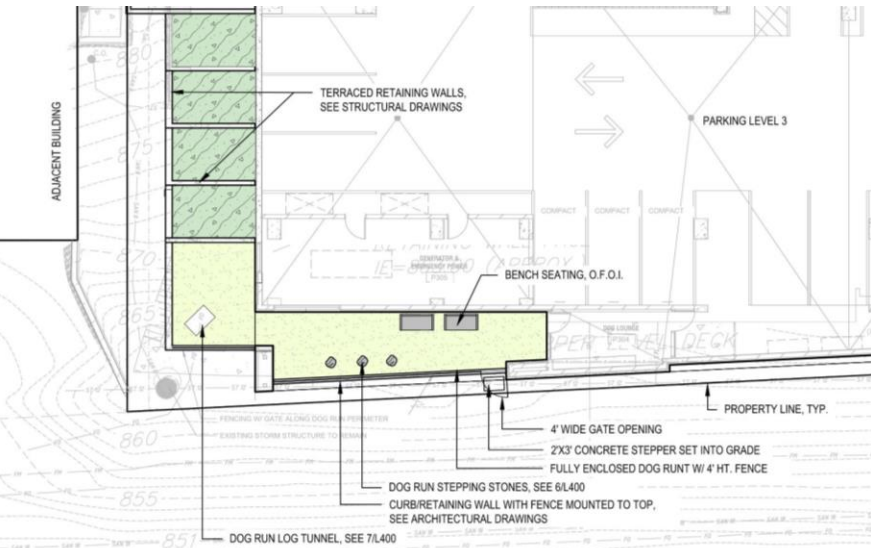
- Sedum spurium 'Fuldaglut'
- Sedum spurium 'John Creech'
- Sedum spurium 'Red Carpet'
- Sedum kamschatcicum
- Sedum kamschatcicum 'Variegatum'
- Sedum kamschatcicum var. floriferum
- Sedum takesimensis 'Golden Carpet'
- Sedum x Immergruenden
- Sedum subsp. rupestre 'Angelina'
- Sedum subsp. rupestre 'Blue Spruce'
- Sedum acre 'Aureum'
- Sedum acre 'Goldmoss'
- Sedum album 'Coral Carpet'
- Sedum album 'Murale'
- Sedum hispanicum
- Sedum sexangulare
- Sedum stefco

SHADE ZONE PLANTING SPECIES COMPOSITION: SUBJECT TO AVAILABILITY, THE SHADE ZONE PLANTING AREA WILL BE COMPOSED OF THE FOLLOWING SPECIES IN APPROXIMATELY EQUAL QUANTITIES. PRE-GROWN AND PLANTED AS PLUGS OR 4-INCH POTS, AND PLANTED DIRECTLY INTO SEDUM CARPET:

- Aquilegia canadensis
- Carex appalachica
- Carex divulsa
- Carex pensylvanica
- Deschampsia flexuosa
- Erigeron pulchellus
- Fragaria virginiana
- Meehania cordata
- Phlox divaricata
- Sessleria autumnalis
- Stachys byzantina 'Big Ears'
- Tiarella cordifolia 'Pink Skyrocket'
- Tiarella cordifolia 'Elizabeth Oliver'

2 2ND FLOOR ROOF TERRACE PLAN

SCALE: 1" = 10'-0" 0 10' 20' APPROXIMATE NORTH



LEGEND

- PEA GRAVEL DOG RUN SURFACE
- ARTIFICIAL PET TURF
- MIXED PERENNIAL/SHRUB PLANTING BED
- PRECAST CONCRETE CURB EDGE

1 DOG RUN PLAN

SCALE: 1" = 10'-0" 0 10' 20' APPROXIMATE NORTH

2ND FLOOR ROOF TERRACE AMENITIES



Corner Fire Pit with City Views



Seating Groups



Artificial Lawn



Green Roof and Planters

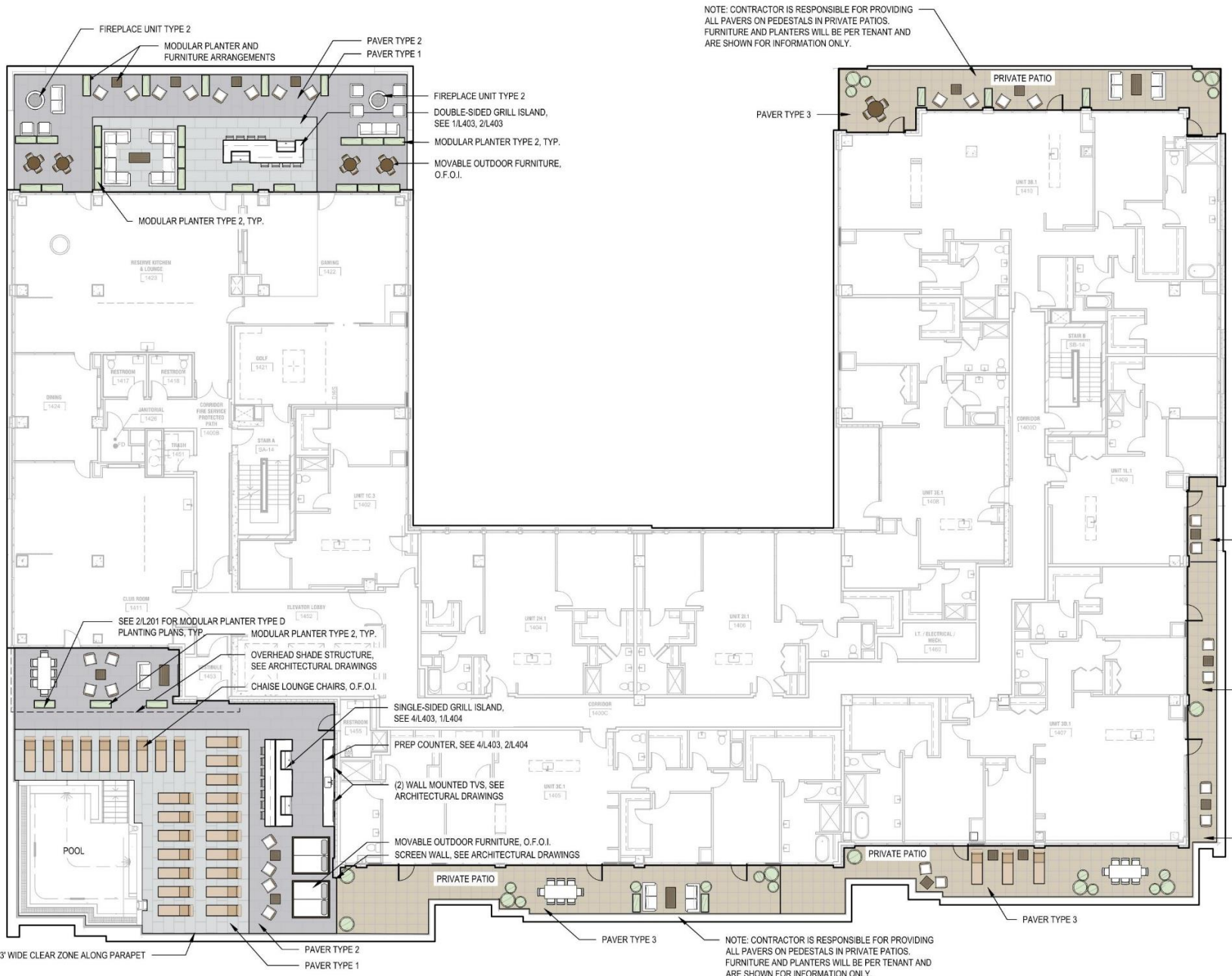
DOG RUN AMENITIES






Obstacle Log



Stepping Stones



LEGEND

-  PRECAST UNIT PAVERS ON PEDESTALS
-  MODULAR PLANTER
-  FIREPLACE UNIT

14TH FLOOR ROOF TERRACE AMENITIES



Food Prep Area with Grills, Bar Seating



Seating Groups



Indoor/Outdoor Fireplace

PRELIMINARY
NOT FOR CONSTRUCTION

121 E. Wilson Street
Quad Capital Partners

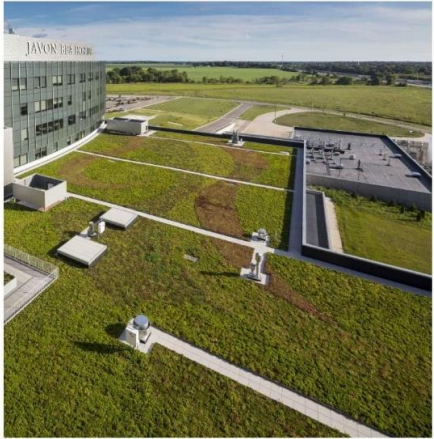
Madison, WI

2021.27.00

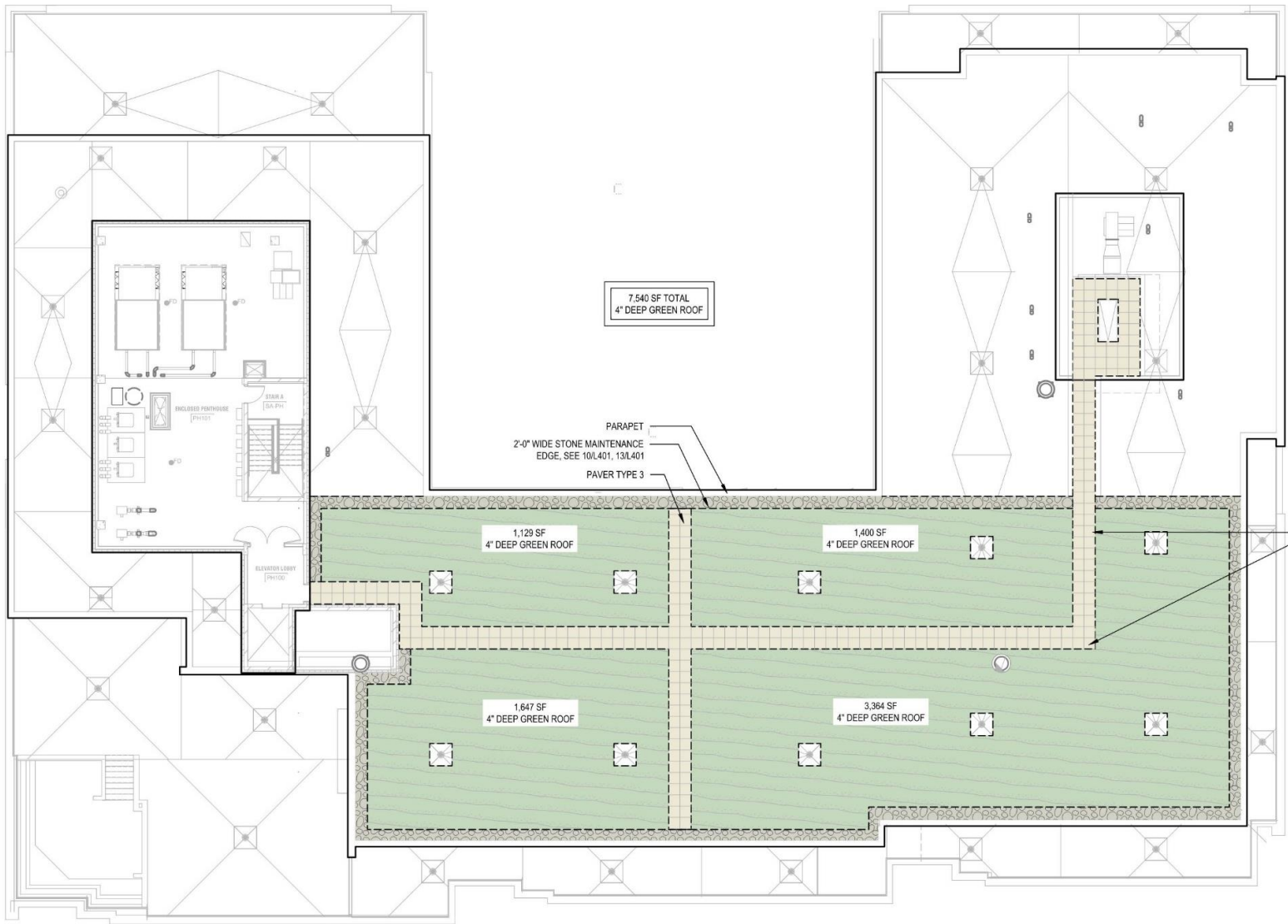
DATE: 2/13/2023 ISSUANCE/REVISIONS: URBAN DESIGN COMMISSION REVIEW

FOURTEENTH FLOOR
ROOF TERRACE PLAN

L102



Typical rooftop / penthouse green roof with 2' clear zone around outside edges and mechanical units. Includes additional paver walkways for maintenance access.



LEGEND

- EXTENSIVE GREEN ROOF WITH SEDUM BLANKET, 4" DEPTH
- PRECAST UNIT PAVERS ON PEDESTALS
- STONE MULCH
- L-SHAPED METAL EDGE

EXTENSIVE GREEN ROOF
SUN [FULL TO PART SUN] SEDUM CARPET
SPECIES COMPOSITION: SUBJECT TO AVAILABILITY, THE SEDUM CARPET WILL BE COMPOSED OF THE FOLLOWING SPECIES IN APPROXIMATELY EQUAL QUANTITIES, PRE-GROWN AND DELIVERED TO THE SITE AS A SOD-LIKE MATERIAL:

- Sedum spurius 'Fuldaglut'
- Sedum spurius 'John Creech'
- Sedum spurius 'Red Carpet'
- Sedum kamtschaticum
- Sedum kamtschaticum 'Variegatum'
- Sedum kamtschaticum var. floriferum
- Sedum takesimensis 'Golden Carpet'
- Sedum x Immergrunchen
- Sedum subsp. rupestre 'Angelina'
- Sedum subsp. rupestre 'Blue Spruce'
- Sedum acre 'Aureum'
- Sedum acre 'Goldmoss'
- Sedum album 'Coral Carpet'
- Sedum album 'Murale'
- Sedum hispanicum
- Sedum sexangulare
- Sedum stefco

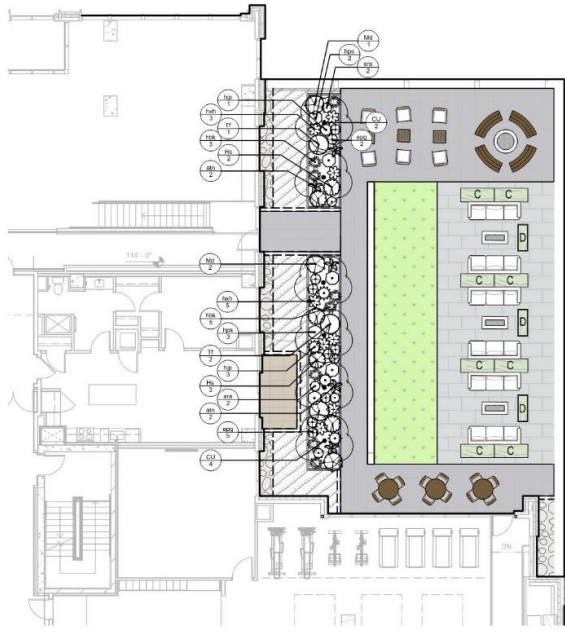
Notes:

PRELIMINARY
NOT FOR CONSTRUCTION

121 E. Wilson Street
Quad Capital Partners
Madison, WI

2021.27.00

DATE	REVISIONS/REVISED
08/26/2022	ISSUE FOR CONSTRUCTION



1 SECOND FLOOR ROOF TERRACE PLANTING PLAN
SCALE: 1" = 10'-0"

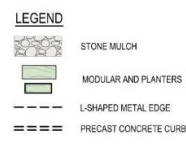
PLANT SCHEDULE 2ND FLOOR

ORNAMENTAL TREES	CODE	BOTANICAL / COMMON NAME	CONT.	SIZE	QTY
	CJ	Carpinus caroliniana 'J.N. Upright' / Firespire Muscadine	B & B	6' HT (MIN.)	6
DECIDUOUS SHRUBS	CODE	BOTANICAL / COMMON NAME	CONT.	SIZE	QTY
	Hs	Hydrangea serrata 'MAD' TM / Tiny Tuft Stuff Mountain Hydrangea	3 gal	CONT.	5
EVERGREEN SHRUBS	CODE	BOTANICAL / COMMON NAME	CONT.	SIZE	QTY
	Md	Microbiota decussata 'Celtic Pride' / Celtic Pride Siberian Cypress	3 gal	CONT.	3
	Tt	Tsuga canadensis 'Moon Frost' / Moon Frost Eastern Hemlock	B & B	18' HT (MIN.)	3
GRASSES	CODE	BOTANICAL / COMMON NAME	CONT.	SIZE	QTY
	hbk	Hakonechloa macro 'Beri-kaze' / Beri-kaze Japanese Forest Grass	1 gal	CONT.	8
PERENNIALS	CODE	BOTANICAL / COMMON NAME	CONT.	SIZE	QTY
	ara	Aranus aethusifolius / Dwarf Goatsbeard	1 gal	CONT.	5
	am	Athyrium niponicum / Japanese Painted Fern	1 gal	CONT.	5
	egg	Epimedium grandiflorum / Barrenwort	1 gal	CONT.	10
	hjp	Helleborus x hybridus 'Peppermint Ice' TM / Peppermint Ice Lantana Rose	1 gal	CONT.	5
	hps	Heuchera x 'Peppermint Spice' / Coral Bells	1 gal	CONT.	6
	hsh	Hosta x 'Haleyon' / Haleyon Plantain Lily	1 gal	CONT.	8



EXTENSIVE GREEN ROOF PLUG PLANTING SCHEDULE 2ND FLOOR

EXTENSIVE GREEN ROOF PLUGS	CONT.	SIZE	QTY
Asplenium platyneuron / Eastern Columbine	247 sf	4" pot	5% @ 24" oc
Carex appalachica / Appalachian Sedge	7	4" pot	10% @ 24" oc
Carex diandra / European City Sedge	7	4" pot	10% @ 24" oc
Carex pensylvanica / Pennsylvania Sedge	7	4" pot	10% @ 24" oc
Deschampsia flexuosa / Wavy Hair Grass	7	4" pot	10% @ 24" oc
Erigeron pulchellus / Robin's Plantain	5	4" pot	7% @ 24" oc
Fragaria virginiana / Wild Strawberry	5	4" pot	7% @ 24" oc
Muhlenbergia cordata / Maiden's Mint	5	4" pot	7% @ 24" oc
Phlox divaricata / Woodland Phlox	5	4" pot	7% @ 24" oc
Saxifraga autumnalis / Autumn Miter Grass	7	4" pot	10% @ 24" oc
Stachys byzantina 'Big Ear' / Big Ear Lamb's Ear	5	4" pot	7% @ 24" oc
Taraxacum officinale / Dandelion	4	4" pot	5% @ 24" oc
Taraxacum officinale / Dandelion	4	4" pot	5% @ 24" oc



NOTES

- IT IS THE CONTRACTOR'S RESPONSIBILITY TO FIELD VERIFY SURVEY INFORMATION AND SITE CONDITIONS PRIOR TO START OF CONSTRUCTION AND REPORT ANY DISCREPANCIES. CONTRACTOR SHALL CONTACT DIGGER'S HOTLINE TO LOCATE ALL PUBLIC AND PRIVATE UTILITIES PRIOR TO THE START OF CONSTRUCTION. ANY DAMAGE CAUSED TO EXISTING UTILITIES, EITHER SHOWN OR NOT, SHALL BE REPAIRED AND PAID FOR AT THE CONTRACTOR'S EXPENSE.
- CONTRACTOR SHALL PROTECT BENCHMARKS.
- ALL WRAPPINGS, WIRE BASKETS, BURLAP, AND OTHER MISCELLANEOUS MATERIAL SHALL BE COMPLETELY REMOVED FROM ALL SHRUB AND TREE ROOT BALLS PRIOR TO INSTALLATION.
- CONTRACTOR IS RESPONSIBLE FOR WATERING AND MAINTENANCE OF PLANT MATERIAL - SEE SPECIFICATIONS FOR MORE INFORMATION.
- CONTRACTOR SHALL THOROUGHLY REVIEW ALL SPECIFICATION SECTIONS RELATED TO TREE PROTECTION, SOIL PREPARATION, TURF AND GRASSES, PLANTS, VEGETATED ROOF SYSTEMS, AND EXTERIOR SITE FURNISHINGS. THESE SECTIONS PROVIDE ADDITIONAL DETAILED INFORMATION ON MATERIALS AND SET STANDARDS FOR QUALITY AND INSTALLATION REQUIREMENTS.

City of Madison Landscape Worksheet
121 East Wilson Street
2/13/2023

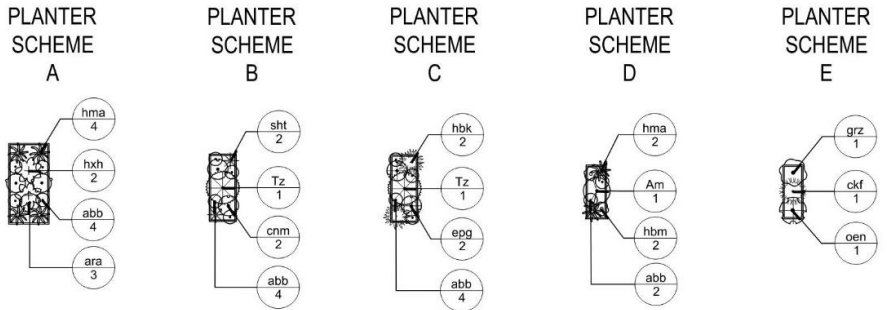
Developed Lots	SF	Minimum Open Space Required (SF)	Landscape Units Required	Landscape Points Subtotal
Total Developed Area	47,064	n/a	157	784
			Landscape Points Required	784

Development Frontage	LF	Overstory Tree Req. (or x2 for Orn./Evrgrm. Tree Sub.)	Shrubs Required		
E Wilson St	266	9	44		
Element	Point Value	Quantity Proposed	Quantity Existing	Points Achieved	
Overstory Deciduous Tree	35	0		0	
Ornamental Tree	15	0		0	
Evergreen Tree	15	0		0	
Shrub, deciduous	2	23		46	
Shrub, evergreen	3	11		33	
Perennial/Ornamental Grass	2	104		208	
Ornamental/Decorative Fence or Wall (4 pts/10 LF)	4			0	
				Development Frontage Points Total	287

Interior Parking Lots	N/A
Total Parking Lot Area	n/a

Element	Point Value	Quantity Proposed	Quantity Existing	Points Achieved	
Overstory Deciduous Tree	35	0		0	
Ornamental Tree	15	9		135	
Evergreen Tree	15	0		0	
Shrub, deciduous	2	28		56	
Shrub, evergreen	3	6		18	
Perennial/Ornamental Grass	2	94		188	
Ornamental/Decorative Fence or Wall (4 pts/10 LF)	4			0	
				General Site Plantings Total	397
				TOTAL LANDSCAPE POINTS	684

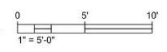
NOTE: plants in movable modular planters not included in the above counts.



2 MODULAR MOVABLE PLANTERS PLANTING PLANS
SCALE: 1" = 5'-0"

PLANT SCHEDULE PLANTERS

DECIDUOUS SHRUBS	CODE	BOTANICAL / COMMON NAME	CONT.	SIZE	QTY
	Am	Aronia melanocarpa 'Low Scap Mount' / Low Scap Mount Chokeberry	2 gal	CONT.	17
EVERGREEN SHRUBS	CODE	BOTANICAL / COMMON NAME	CONT.	SIZE	QTY
	Tz	Thuja occidentalis 'Bobczan' TM / Mt. Bowling Ball Arborvitae	2 gal	CONT.	12
GRASSES	CODE	BOTANICAL / COMMON NAME	CONT.	SIZE	QTY
	ckf	Calamagrostis x acediflora 'Karl Foerster' / Feather Reed Grass	1 gal	CONT.	8
	hma	Hakonechloa macro 'All Gold' / Japanese Forest Grass	1 gal	CONT.	70
	hbk	Hakonechloa macro 'Beri-kaze' / Beri-kaze Japanese Forest Grass	1 gal	CONT.	16
	sht	Sporobolus heterolepis 'Tara' / Prairie Dropseed	1 gal	CONT.	8
PERENNIALS	CODE	BOTANICAL / COMMON NAME	CONT.	SIZE	QTY
	abb	Alyssa reptans 'Bronze Beauty' / Bronze Beauty Carpet Bugle	1 qt	CONT.	116
	ara	Aranus aethusifolius / Dwarf Goatsbeard	1 gal	CONT.	27
	cmn	Calamintha nepeta 'Montrose White' / White Calamint	1 gal	CONT.	8
	egg	Epimedium grandiflorum / Barrenwort	1 gal	CONT.	16
	grz	Geranium x 'Rozanne' / Rozanne Cranesbill	1 gal	CONT.	8
	hsh	Hosta x 'Haleyon' / Haleyon Plantain Lily	1 gal	CONT.	18
	hbm	Hosta x 'Blue Mouse Ears' / Blue Mouse Ears Hosta	1 gal	CONT.	34
	oen	Oenothera missouriensis 'Clark Sundstroff' / Missouri Petrose	1 gal	CONT.	8



PRELIMINARY
NOT FOR CONSTRUCTION

121 E. Wilson Street
Quad Capital Partners

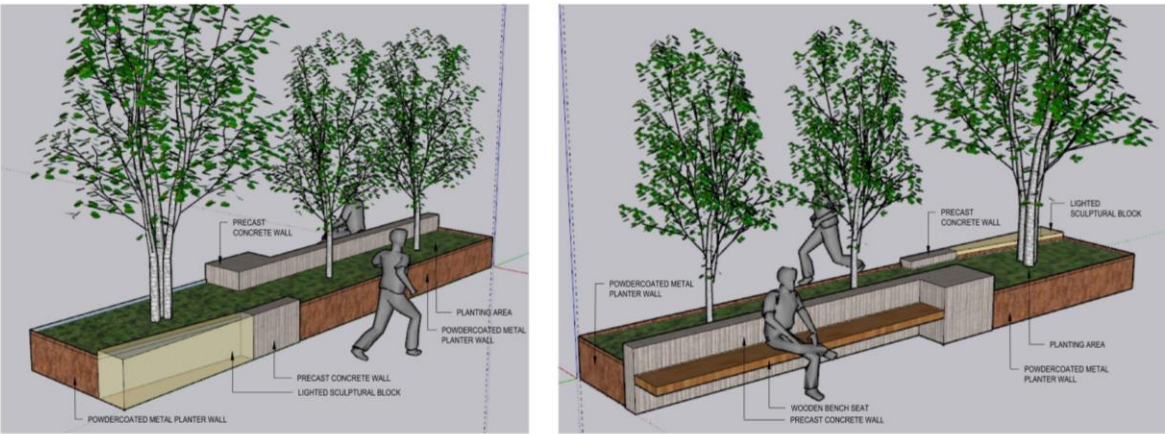
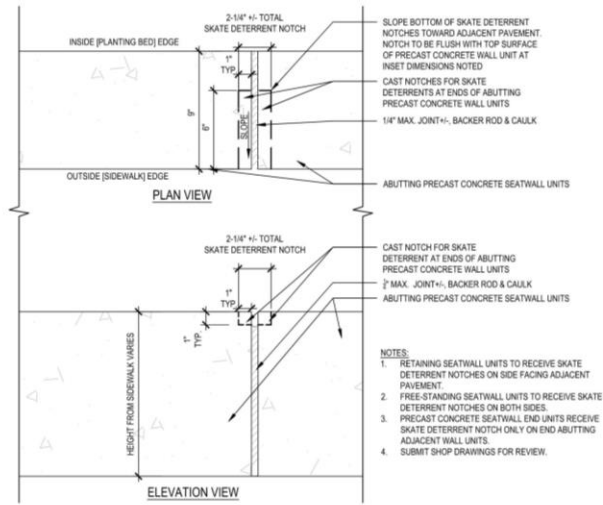
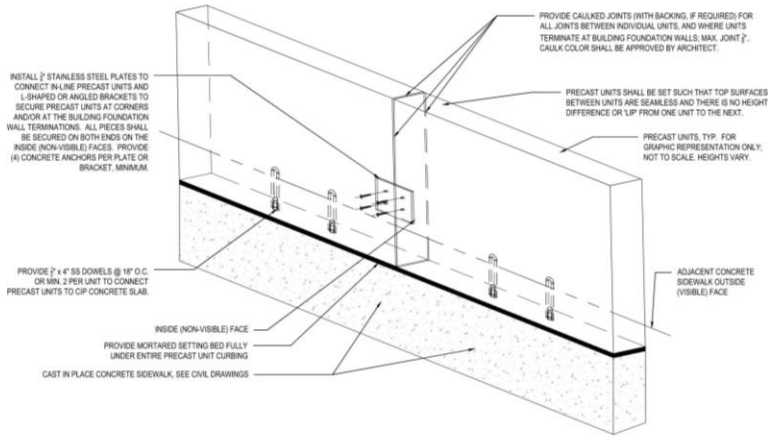
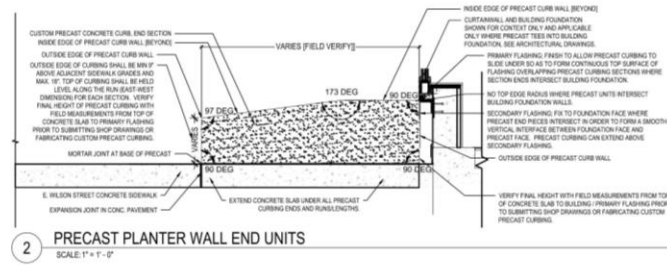
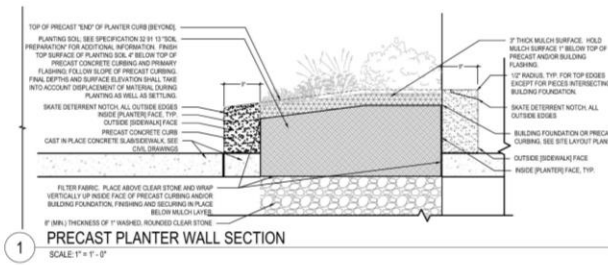
Madison, WI

2021.27.00

Date	Issuance/Revisions	Symbol
08/08/2022	LAND USE & UIC APPLICATION	

SECOND FLOOR & MODULAR
PLANTER PLANTING PLANS

L201



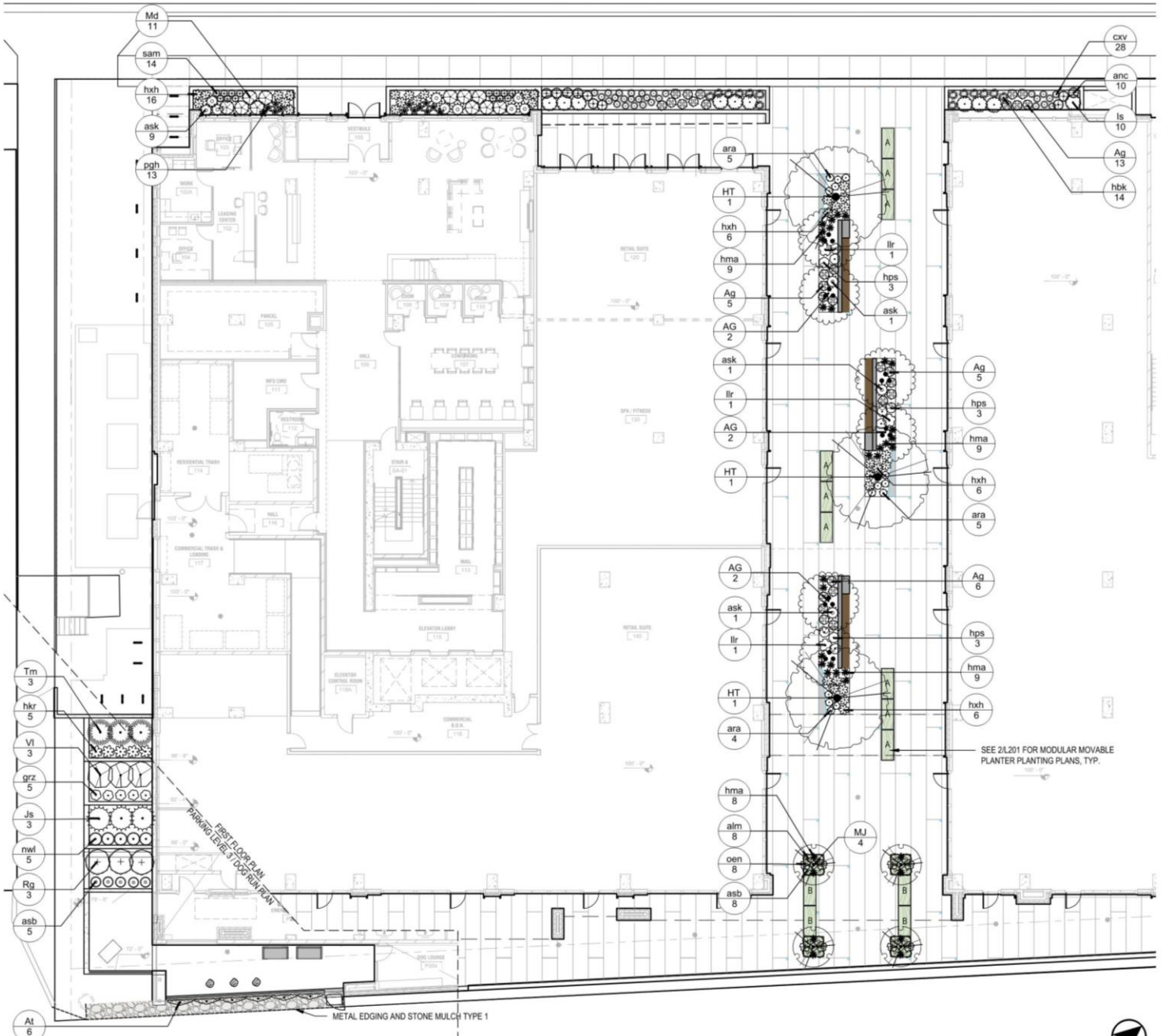
Date	Issuance/Revisions	Symbol
08/08/2022	LAND USE & UCC APPLICATION	

LEGEND

	STONE MULCH
	MODULAR AND MOVABLE PLANTER
	METAL EDGING AT GRADE
	PRECAST CONCRETE CURB

PLANT SCHEDULE 1ST FLOOR

ORNAMENTAL TREES	CODE	BOTANICAL / COMMON NAME	CONT.	SIZE	QTY
	AG	Amelanchier x grandiflora 'Autumn Brilliance' / Autumn Brilliance Serviceberry	8 & B	6' HT. (MIN.)	6
	HT	Halesia tetraptera 'Rosea' / Pink Carolina Silverbell	8 & B	2" Cal	3
	MJ	Malus x 'Jamin' TM / Marilee Crabapple	8 & B	2" Cal	4
DECIDUOUS SHRUBS	CODE	BOTANICAL / COMMON NAME	CONT.	SIZE	QTY
	Ag	Aronia melanocarpa 'UCONNAM012' TM / Ground Hog Black Chokeberry	2 gal	CONT.	29
	Is	Itea virginica 'Sprich' TM / Little Henry Sweetpire	3 gal	CONT.	10
	Rg	Rhus aromatica 'Gr-Low' / Gr-Low Fragrant Sumac	3 gal	CONT.	3
	Vi	Viburnum dentatum 'YL.Maeveleen' TM / Little Joe Viburnum	8 & B	36" HT. (MIN.)	3
EVERGREEN SHRUBS	CODE	BOTANICAL / COMMON NAME	CONT.	SIZE	QTY
	Js	Juniperus x pflzeriana 'Sea Green' / Sea Green Pflizer Juniper	5 gal	CONT.	3
	Md	Microbiota decussata 'Celtic Pride' / Celtic Pride Siberian Cypress	3 gal	CONT.	11
	Tm	Taxus x media 'Taurinori' / Taurin Yew	3 gal	CONT.	3
GRASSES	CODE	BOTANICAL / COMMON NAME	CONT.	SIZE	QTY
	cxv	Carex vulpoides / Fox Sedge	1 qt.	CONT.	28
	hma	Hakonechoa macroa 'All Gold' / Japanese Forest Grass	1 gal	CONT.	35
	hbk	Hakonechoa macroa 'Beri-kaze' / Beri-kaze Japanese Forest Grass	1 gal	CONT.	14
	sam	Sesleria autumnalis / Autumn Moor Grass	1 gal	CONT.	14
PERENNIALS	CODE	BOTANICAL / COMMON NAME	CONT.	SIZE	QTY
	alm	Alchemilla mollis / Lady's Mantle	1 gal	CONT.	8
	asb	Allium x 'Summer Beauty' / Summer Beauty Allium	1 qt.	CONT.	13
	anc	Anemone canadensis / Canadian Anemone	1 qt.	CONT.	10
	ask	Anelis cordata 'Sun King' / Sun King Japanese Spikenard	1 gal	CONT.	12
	ara	Aruncus aethusifolius / Dwarf Goatsbeard	1 gal	CONT.	14
	grz	Geranium x 'Rozanne' / Rozanne Cranesbill	1 gal	CONT.	5
	hps	Heuchera x 'Peppermint Spice' / Coral Bells	1 gal	CONT.	9
	hsh	Hosta x 'Haloyn' / Haloyn Plantain Lily	1 gal	CONT.	34
	hkr	Hosta x 'Krossa Regal' / 'Krossa Regal' Plantain Lily	1 gal	CONT.	5
	lr	Ligularia x hesselii 'Little Rocket' / Little Rocket Ragwort	1 gal	CONT.	3
	nel	Nepeta x fassenii 'Walker's Low' / Walker's Low Catmint	1 gal	CONT.	5
	oen	Oenothera missouriensis 'Oak Sundrop' / Missouri Primrose	1 gal	CONT.	8
	pgh	Polygonatum humile / Dwarf Solomon's Seal	1 gal	CONT.	13
VINES	CODE	BOTANICAL / COMMON NAME	CONT.	SIZE	QTY
	At	Anisobolus macrophylla / Dutchman's Pipe	1 gal	CONT.	6



SEE 2/L201 FOR MODULAR MOVABLE PLANTER PLANTING PLANS, TYP.

1 FIRST FLOOR AND DOG RUN PLANTING PLAN
SCALE: 1" = 10'-0"





North Elevation 9.01.2022



North Elevation

- ELEVATION KEY NOTES
- 1 ALUMINUM STOREFRONT SYSTEM ANODIZED MEDIUM BRONZE
 - 2 ALUMINUM CURTAIN WALL SYSTEM FULLY CAPTURED, 1" DEEP WINDOW MULLION CAPS BY VENTS AT APT UNITS. ANODIZED MEDIUM BRONZE
 - 3 ALUMINUM WINDOW WALL SYSTEM FULLY CAPTURED, 1" DEEP WINDOW MULLION CAPS BY VENTS AT APT UNITS. ANODIZED MEDIUM BRONZE
 - 4 UNITIZED SSG ALUMINUM WINDOW WALL SYSTEM. ZERO RIGHT LINE VENTS AT APT UNITS.
 - 5 BRICK VENEER
 - 6 BRICK VENEER. EVERY OTHER COURSE EXTENDS OUT FROM FACE OF WALL 3/4"
 - 7 CONCEALED FASTENER FORMED METAL PANEL. ANODIZED MEDIUM BRONZE
 - 8 FLATED CONCEALED FASTENER FORMED METAL PANEL. ANODIZED MEDIUM BRONZE
 - 9 CONCEALED FASTENER ANODIZED ALUMINUM SURROUND. MEDIUM BRONZE
 - 10 STEEL SHADE STRUCTURE
 - 11 MECHANICAL LOUVER
 - 12 MECHANICAL LOUVER IN CURTAIN WALL FRAMING SYSTEM. FINAL LOCATIONS DETERMINED WITH TENANT INTERIOR PLANS
 - 13 GLASS GUARDRAIL
 - 14 EXPOSED CONCRETE BALCONY
 - 15 SITE CAST CONCRETE W/ FORM-LINER FINISH
 - 16 SITE CAST CONCRETE
 - 17 COLIANG ENTRANCE
 - 18 EXPOSED FASTENER COMPOSITE WALL PANEL
 - 19 GALVANIZED CABLE HUNG FROM OVERHANG AND SECURED TO CONCRETE PLANTER WALL
 - 20 CONCRETE STEEL AND PRECAST CONCRETE PLANTER
 - 21 ANODIZED ALUMINUM ENTRY DOORS IN CURTAIN WALL FRAMING SYSTEM. MEDIUM BRONZE
 - 22 ALUMINUM ENTRY DOORS IN CURTAIN WALL FRAMING SYSTEM. FINAL LOCATIONS DETERMINED WITH TENANT INTERIOR PLANS
 - 23 CAST STONE SILL
 - 24 PLANNED TENANT STORAGE ZONE. FINAL LOCATIONS DETERMINED BY TENANT. PROJECTING AND GROUND SIGNAGE IS ANTICIPATED.
 - 25 ENTRANCE CANOPY
 - 26 CABLE GUARDRAIL
 - 27 ANGLED CONCEALED FASTENER FORMED METAL PANEL. ANODIZED MEDIUM BRONZE
- ELEVATION KEY
- SPANDREL GLAZING

121 E. Wilson Street
Quad Capital Partners
Madison, WI

2021.27.00

DATE	ISSUANCE REVISIONS
08.13.2023	ISSUE FOR CONSTRUCTION REVIEW

PRELIMINARY
NOT FOR CONSTRUCTION

BUILDING ELEVATIONS



- T.O. ELEVATOR**
257' - 8"
- T.O. PENTHOUSE**
255' - 8"
- CYPH**
243' - 3 1/2"
- T.O. PARAPET**
243' - 2"
- ROOF**
242' - 0"
- FOURTEENTH FLOOR** 231' - 0"
 - THIRTEENTH FLOOR** 220' - 4"
 - TWELFTH FLOOR** 210' - 8"
 - ELEVENTH FLOOR** 201' - 0"
 - TENTH FLOOR** 191' - 4"
 - NINTH FLOOR** 181' - 8"
 - EIGHTH FLOOR** 172' - 0"
 - SEVENTH FLOOR** 162' - 4"
 - SIXTH FLOOR** 152' - 8"
 - FIFTH FLOOR** 143' - 0"
 - FOURTH FLOOR** 133' - 4"
 - THIRD FLOOR** 123' - 8"
 - SECOND FLOOR** 114' - 0"
 - FIRST FLOOR** 100' - 0"
 - PARKING LEVEL 1** 86' - 6"
 - PARKING LEVEL 2** 77' - 6"
 - PARKING LEVEL 3** 68' - 6"
 - PARKING LEVEL 4** 59' - 6"

- ELEVATION KEY NOTES
- 1 ALUMINUM STOREFRONT SYSTEM ANODIZED MEDIUM BRONZE
 - 2 ALUMINUM CURTAIN WALL SYSTEM FULLY CAPTURED, 1" DEEP WINDOW MULLION CAPS W/ VENTS AT APT UNITS, ANODIZED MEDIUM BRONZE
 - 3 ALUMINUM WINDOW WALL SYSTEM, FULLY CAPTURED, 1" DEEP WINDOW MULLION CAPS W/ VENTS AT APT UNITS, ANODIZED MEDIUM BRONZE
 - 4 UNIFORM SSG ALUMINUM WINDOW WALL SYSTEM, ZERO LIGHT LINE VENTS AT APT UNITS.
 - 5 BRICK VENEER
 - 6 BRICK VENEER, EVERY OTHER COURSE EXTENDS OUT FROM FACE OF WALL 3/4"
 - 7 CORUGATED FASTENER FORMED METAL PANEL, ANODIZED MEDIUM BRONZE
 - 8 FLATTED CONCEALED FASTENER FORMED METAL PANEL, ANODIZED MEDIUM BRONZE
 - 9 CONCEALED FASTENER ANODIZED ALUMINUM SURROUND, MEDIUM BRONZE
 - 10 STEEL SHADE STRUCTURE
 - 11 MECHANICAL LOUVER
 - 12 MECHANICAL LOUVER IN CURTAIN WALL FRAMING SYSTEM. FINAL LOCATIONS DETERMINED WITH TENANT INTERIOR PLANS
 - 13 GLASS GUARDRAIL
 - 14 EXPOSED CONCRETE BALCONY
 - 15 SITE CAST CONCRETE W/ FORM-LINER FINISH
 - 16 SITE CAST CONCRETE
 - 17 COILING ENTRANCE
 - 18 EXPOSED FASTENER COMPOSITE WALL PANEL
 - 19 GALVANIZED CABLE HUNG FROM OVERHAND AND SECURED TO CONCRETE PLANTER WALL
 - 20 CORIETEN STEEL AND PRECAST CONCRETE PLANTER
 - 21 ANODIZED ALUMINUM ENTRY DOORS IN CURTAIN WALL FRAMING SYSTEM, MEDIUM BRONZE
 - 22 ALUMINUM ENTRY DOORS IN CURTAIN WALL FRAMING SYSTEM. FINAL LOCATIONS DETERMINED WITH TENANT INTERIOR PLANS
 - 23 CAST STONE SILL
 - 24 PLANNED TENANT SIGNAGE ZONE. FINAL LOCATIONS DETERMINED BY TENANT. WALL PROJECTING AND GROUND SIGNAGE IS ANTICIPATED.
 - 25 ENTRANCE CANOPY
 - 26 CABLE GUARDRAIL
 - 27 ANGLED CONCEALED FASTENER FORMED METAL PANEL, ANODIZED MEDIUM BRONZE
- ELEVATION KEY
SPANDREL GLAZING
- 121 E. Wilson Street
Quad Capital Partners
Madison, WI
- 2021.27.00
- | DATE | ISSUANCE REVISIONS |
|------------|-------------------------------|
| 20.11.0203 | ISSUE FOR CONSTRUCTION REVIEW |

South Elevation 9.01.2022

South Elevation

PRELIMINARY
NOT FOR CONSTRUCTION



East Elevation 9.01.2022



East Elevation

ELEVATION KEY NOTES

- 1 ALUMINUM STOREFRONT SYSTEM ANODIZED MEDIUM BRONZE
- 2 ALUMINUM CURTAIN WALL SYSTEM FULLY CAPTURED, 1" DEEP WINDOW MILLION CAPS BY VENTS AT APT UNITS. ANODIZED MEDIUM BRONZE
- 3 ALUMINUM WINDOW WALL SYSTEM FULLY CAPTURED, 1" DEEP WINDOW MILLION CAPS BY VENTS AT APT UNITS. ANODIZED MEDIUM BRONZE
- 4 UNIFORM, SSG ALUMINUM WINDOW WALL SYSTEM, ZERO SIGHT LINE VENTS AT APT UNITS.
- 5 BRICK VENEER
- 6 BRICK VENEER, EVERY OTHER COURSE EXTENDS OUT FROM FACE OF WALL 3/4"
- 7 CONCEALED FASTENER FORMED METAL PANEL ANODIZED MEDIUM BRONZE
- 8 FLEATED CONCEALED FASTENER FORMED METAL PANEL ANODIZED MEDIUM BRONZE
- 9 CONCEALED FASTENER ANODIZED ALUMINUM SURROUND, MEDIUM BRONZE
- 10 STEEL SHADE STRUCTURE
- 11 MECHANICAL LOUVER
- 12 MECHANICAL LOUVER IN CURTAIN WALL FRAMING SYSTEM. FINAL LOCATIONS DETERMINED WITH TENANT INTERIOR PLANS.
- 13 GLASS GUARDRAIL
- 14 EXPOSED CONCRETE BALCONY
- 15 SITE CAST CONCRETE W/ FORM LINER FINISH
- 16 SITE CAST CONCRETE
- 17 COILING ENTRANCE
- 18 EXPOSED FASTENER COMPOSITE WALL PANEL
- 19 GALVANIZED CABLE HUNG FROM OVERHAND AND SECURED TO CONCRETE PLANTER WALL
- 20 CORITEN STEEL AND PRECAST CONCRETE PLANTER
- 21 ANODIZED ALUMINUM ENTRY DOORS IN CURTAIN WALL FRAMING SYSTEM MEDIUM BRONZE
- 22 ALUMINUM ENTRY DOORS IN CURTAIN WALL FRAMING SYSTEM. FINAL LOCATIONS DETERMINED WITH TENANT INTERIOR PLANS
- 23 CAST STONE SILL
- 24 PLANNED TENANT SIGNAGE ZONE. FINAL LOCATIONS DETERMINED BY TENANT. WALL PROJECTING AND GROUND SIGNAGE IS ANTICIPATED.
- 25 ENTRANCE CANOPY
- 26 CABLE GUARDRAIL
- 27 ANGLED CONCEALED FASTENER FORMED METAL PANEL ANODIZED MEDIUM BRONZE

ELEVATION KEY

SPANDREL GLAZING

121 E. Wilson Street
Quad Capital Partners
Madison, WI

2021.27.00

DATE	ISSUED FOR REVIEW
09/13/2023	ISSUED FOR CONSTRUCTION REVIEW

PRELIMINARY
NOT FOR CONSTRUCTION

BUILDING
ELEVATIONS

A250



West Elevation 9.01.2022



West Elevation

- ELEVATION KEY NOTES
- ALUMINUM SCOFFER SYSTEM ANODIZED MEDIUM BRONZE
 - ALUMINUM CURTAIN WALL SYSTEM FULLY CAPTURED, 1" DEEP WINDOW MULLION CAPS BY VENTS AT APT UNITS, ANODIZED MEDIUM BRONZE
 - ALUMINUM WINDOW WALL SYSTEM FULLY CAPTURED, 1" DEEP WINDOW MULLION CAPS BY VENTS AT APT UNITS, ANODIZED MEDIUM BRONZE
 - UNITIZED SSG ALUMINUM WINDOW WALL SYSTEM, ZERO RIGHT LINE VENTS AT APT UNITS.
 - BRICK VENEER
 - BRICK VENEER, EVERY OTHER COURSE EXTENDS OUT FROM FACE OF WALL, 3/4"
 - CONCEALED FASTENER FORMED METAL PANEL, ANODIZED MEDIUM BRONZE
 - FLAATED CONCEALED FASTENER FORMED METAL PANEL, ANODIZED MEDIUM BRONZE
 - CONCEALED FASTENER ANODIZED ALUMINUM SURROUND, MEDIUM BRONZE
 - STEEL SHADE STRUCTURE
 - MECHANICAL LOUVER
 - FINAL LOCATIONS DETERMINED WITH TENANT EXTERIOR PLANS
 - GLASS GUARDRAIL
 - EXPOSED CONCRETE BALCONY
 - SITE CAST CONCRETE W/ FORMALINER FINISH
 - ALUMINUM ENTRANCE
 - EXPOSED FASTENER COMPOSITE WALL PANEL
 - GALVANIZED CABLE HUNG FROM OVERHANG AND SECURED TO CONCRETE PLANTER
 - CONCRETE STEEL AND PRECAST CONCRETE PLANTER
 - ANODIZED ALUMINUM ENTRY DOORS IN CURTAIN WALL FRAMING SYSTEM, MEDIUM BRONZE
 - ALUMINUM ENTRY DOORS IN CURTAIN WALL FRAMING SYSTEM, FINAL LOCATIONS DETERMINED WITH TENANT EXTERIOR PLANS
 - CAST STONE SILL
 - PLANNED TENANT STORAGE ZONE, FINAL LOCATIONS DETERMINED BY TENANT, PROJECTING AND GROUND SIGNAGE IS ANTICIPATED.
 - ENTRANCE CANOPY
 - CABLE GUARDRAIL
 - ANGLED CONCEALED FASTENER FORMED METAL PANEL, ANODIZED MEDIUM BRONZE

- ELEVATION KEY
- SPANDREL GLAZING

121 E. Wilson Street
Quad Capital Partners
Madison, WI

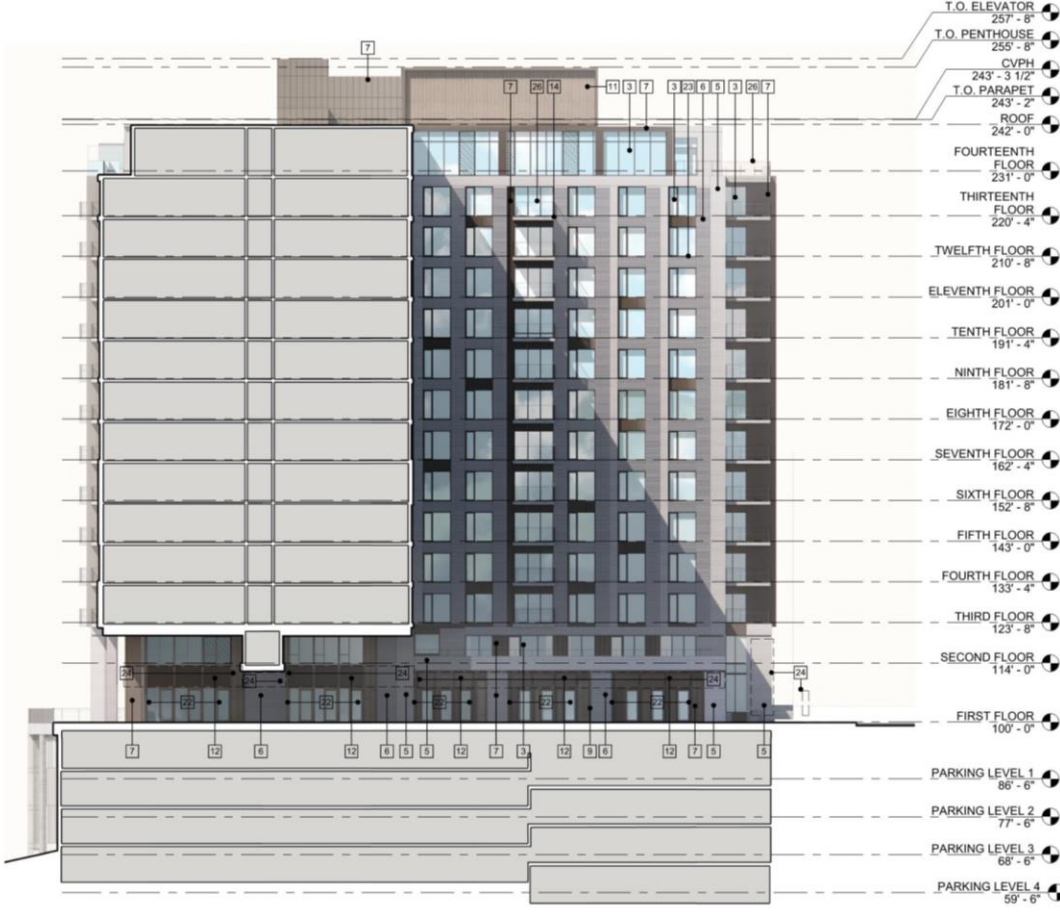
2021.27.00

DATE	ISSUANCE REASON
08.13.2023	ISSUED FOR CONSTRUCTION REVIEW

PRELIMINARY
NOT FOR CONSTRUCTION



Promenade East Elevation 9.01.2022



Promenade East Elevation

- ELEVATION KEY NOTES
- [1] ALUMINUM STOREFRONT SYSTEM ANODIZED MEDIUM BRONZE
 - [2] ALUMINUM CURTAIN WALL SYSTEM FULLY CAPTURED 1" DEEP WINDOW WALLTOP CAPS W/ VENTS AT APT UNITS ANODIZED MEDIUM BRONZE
 - [3] ALUMINUM WINDOW WALL SYSTEM FULLY CAPTURED 1" DEEP WINDOW WALLTOP CAPS W/ VENTS AT APT UNITS ANODIZED MEDIUM BRONZE
 - [4] UNFINISHED BRG ALUMINUM WINDOW WALL SYSTEM ZERO SIGHTLINE VENTS AT APT UNITS
 - [5] BRICK VENEER EVERY OTHER COURSE EXTENDS OUT FROM FACE OF WALL 3/4"
 - [6] CONCEALED FASTENER FORMED METAL PANEL ANODIZED MEDIUM BRONZE
 - [7] PLATED CONCEALED FASTENER FORMED METAL PANEL ANODIZED MEDIUM BRONZE
 - [8] CONCEALED FASTENER ANODIZED ALUMINUM SURROUNDING MEDIUM BRONZE
 - [9] STEEL SHADE STRUCTURE
 - [10] MECHANICAL LOUISER
 - [11] MECHANICAL LOUISER IN CURTAIN WALL FRAMING SYSTEM FINAL LOCATIONS DETERMINED WITH TENANT INTERIOR PLANS
 - [12] GLASS GUARDRAIL
 - [13] EXPOSED CONCRETE BALCONY
 - [14] SITE CAST CONCRETE W/ FORM-LINER FINISH
 - [15] SITE CAST CONCRETE
 - [16] COILING ENTRANCE
 - [17] EXPOSED FASTENER COMPOSITE WALL PANEL
 - [18] GALVANIZED CABLE HUNG FROM OVERHANG AND SECURED TO CONCRETE PLANTER WALL
 - [19] CONCRETE STEEL AND PRECAST CONCRETE PLANTER
 - [20] ANODIZED ALUMINUM ENTRY DOORS IN CURTAIN WALL FRAMING SYSTEM MEDIUM BRONZE
 - [21] ALUMINUM ENTRY DOORS IN CURTAIN WALL FRAMING SYSTEM FINAL LOCATIONS DETERMINED WITH TENANT INTERIOR PLANS
 - [22] CAST STONE SILL
 - [23] PLANNED TENANT SIGNAGE ZONE FINAL LOCATIONS DETERMINED BY TENANT WALL PROTECTIVE AND GRADING SIGNAGE B
 - [24] ENTRANCE CANOPY
 - [25] CABLE GUARDRAIL
 - [26] ANGLED CONCEALED FASTENER FORMED METAL PANEL ANODIZED MEDIUM BRONZE

ELEVATION KEY
[S] SPANDREL GLAZING

121 E. Wilson Street
Quad Capital Partners
Madison, WI

2021.27.00

DATE	REVISIONS
08.13.2022	URBAN DESIGN COMMISSION REVIEW

PRELIMINARY
NOT FOR CONSTRUCTION

BUILDING ELEVATIONS

A252



Promenade West Elevation 9.01.2022



Promenade West Elevation

- T.O. ELEVATOR 257' - 8"
- T.O. PENTHOUSE 255' - 8" CVPH 243' - 3 1/2"
- T.O. PARAPET 243' - 2"
- ROOF 242' - 0"
- FOURTEENTH FLOOR 231' - 0"
- THIRTEENTH FLOOR 220' - 4"
- TWELFTH FLOOR 210' - 8"
- ELEVENTH FLOOR 201' - 0"
- TENTH FLOOR 191' - 4"
- NINTH FLOOR 181' - 8"
- EIGHTH FLOOR 172' - 0"
- SEVENTH FLOOR 162' - 4"
- SIXTH FLOOR 152' - 8"
- FIFTH FLOOR 143' - 0"
- FOURTH FLOOR 133' - 4"
- THIRD FLOOR 123' - 8"
- SECOND FLOOR 114' - 0"
- FIRST FLOOR 100' - 0"
- PARKING LEVEL 1 86' - 6"
- PARKING LEVEL 2 77' - 6"
- PARKING LEVEL 3 68' - 6"
- PARKING LEVEL 4 59' - 6"

- ELEVATION KEY NOTES**
- ALUMINUM STOREFRONT SYSTEM ANODIZED MEDIUM BRONZE
 - ALUMINUM CURTAIN WALL SYSTEM FULLY CAPTURED 1" DEEP WINDOW WALL CAPS W/ VENTS AT APT UNITS ANODIZED MEDIUM BRONZE
 - ALUMINUM WINDOW WALL SYSTEM FULLY CAPTURED 1" DEEP WINDOW WALL CAPS W/ VENTS AT APT UNITS ANODIZED MEDIUM BRONZE
 - UNITIZED SIG ALUMINUM WINDOW WALL SYSTEM ZERO SIGHT-LINE VENTS AT APT UNITS
 - BRICK VENEER EVERY OTHER COURSE EXTENDS OUT FROM FACE OF WALL 3/8"
 - CONCEALED FASTENER FORMED METAL PANEL ANODIZED MEDIUM BRONZE
 - FLAATTED CONCEALED FASTENER FORMED METAL PANEL ANODIZED MEDIUM BRONZE
 - CONCEALED FASTENER ANODIZED ALUMINUM SURROUNDING MEDIUM BRONZE
 - STEEL SHADE STRUCTURE
 - MECHANICAL LOUVER
 - MECHANICAL LOUVER IN CURTAIN WALL FRAMING SYSTEM FINAL LOCATIONS DETERMINED WITH TENANT INTERIOR PLANS
 - GLASS GUARDRAIL
 - EXPOSED CONCRETE BALCONY
 - SITE CAST CONCRETE W/ FORMALINER FINISH
 - SITE CAST CONCRETE
 - COILING ENTRANCE
 - EXPOSED FASTENER COMPOSITE WALL PANEL
 - GALVANIZED CABLE HUNG FROM OVERHANG AND SECURED TO CONCRETE PLANTER WALL
 - CONCRETE STEEL AND PRECAST CONCRETE PLANTER
 - ANODIZED ALUMINUM ENTRY DOORS IN CURTAIN WALL FRAMING SYSTEM MEDIUM BRONZE
 - ALUMINUM ENTRY DOORS IN CURTAIN WALL FRAMING SYSTEM FINAL LOCATIONS DETERMINED WITH TENANT INTERIOR PLANS
 - CAST STONE SILL
 - PLANNED TENANT SIGNAGE ZONE FINAL LOCATIONS DETERMINED BY TENANT WALL PROJECTIONS AND SIGNAGE BRIDGE B
 - ENTRANCE CANOPY
 - CABLE GUARDRAIL
 - ANGLED CONCEALED FASTENER FORMED METAL PANEL ANODIZED MEDIUM BRONZE

ELEVATION KEY
SPANDREL GLAZING

121 E. Wilson Street
Quad Capital Partners
Madison, WI

2021.27.00

DATE	REVISION
06/13/2023	UPRAN (DCC) COMMISSION REVIEW

PRELIMINARY
NOT FOR CONSTRUCTION

BUILDING ELEVATIONS

A252