

CLG Consulting Party Review
 Madison Bus Rapid Transit
 December 13, 2021



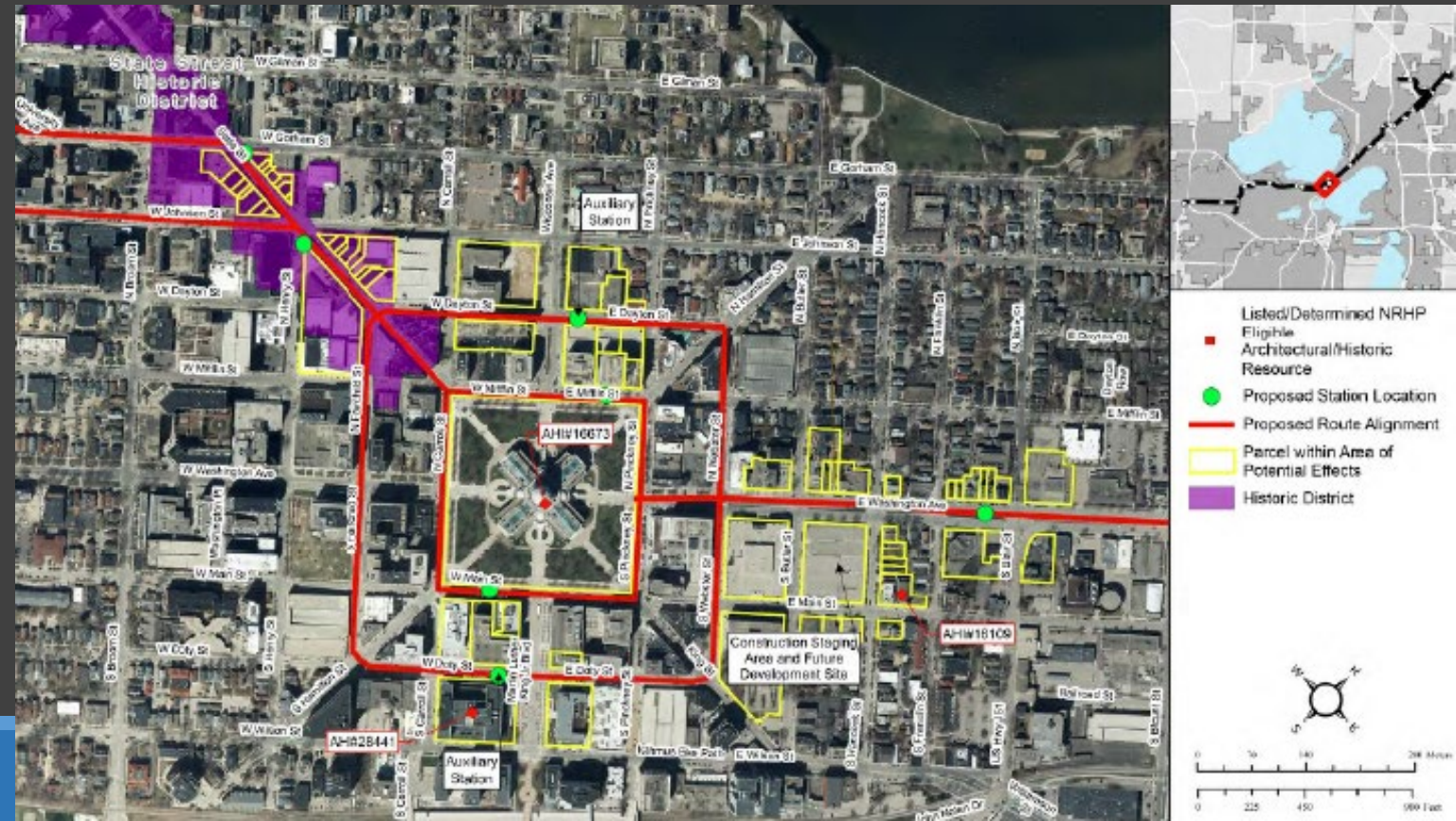
Proposed Work

- Proposed BRT stations have potential impacts to several National Register listed or eligible properties.
 - University Hill Farms historic district
 - Bascom Hill historic district
 - State Street eligible historic district
 - Wisconsin State Capitol (NHL)
 - Gisholt Machine Company building
 - East High School



Section 106 Process

1. Identify Area of Potential Effect (APE)
2. Identify historic properties within APE
3. Assess potential effects



University Hill Farms historic district



University Hill Farms historic district



Adjacent to Bascom Hill historic district



Adjacent to Bascom Hill historic district



State Street eligible historic district



State Street eligible historic district



Wisconsin State Capitol

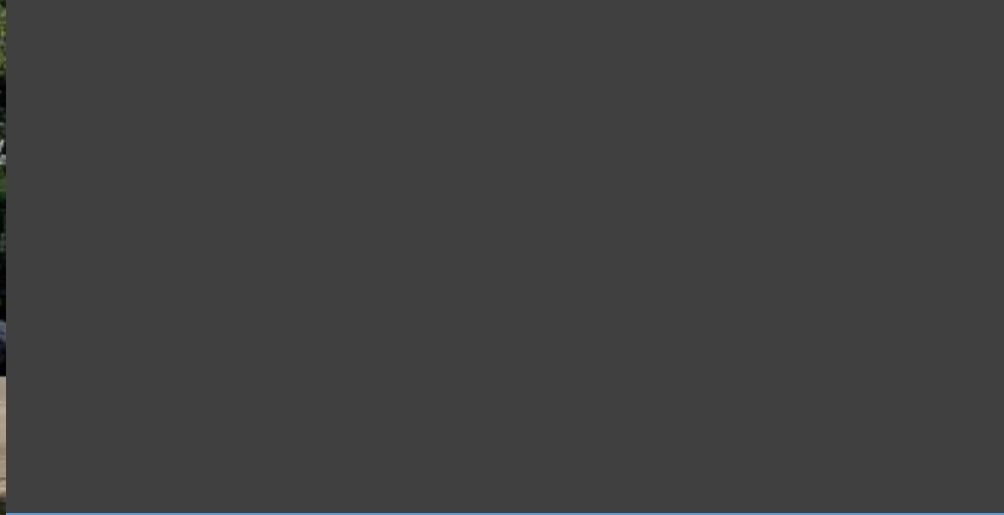


Proposed auxiliary stations

Dane County Courthouse/Madison City Hall



Gisholt Machine Company



East High School



CLG Consulting Party Comments

The project team completed its draft assessment of effects with a finding of No Adverse Effect



CLG Consulting Party Comments

The Landmarks Commission needs to determine if

- The proposal would meet the criteria for an Adverse Effect*
- The commission needs additional information to make a determination
- There are methods to mitigate the visual impacts, which the commission may suggest



Applicable Standards

36CFR800.5(a)(1):

“Criteria of adverse effect. An adverse effect is found when an undertaking may **alter, directly or indirectly, any of the characteristics of a historic property** that qualify the property for inclusion in the National Register in a manner that **would diminish the integrity of the property's location, design, setting, materials, workmanship, feeling, or association**. Consideration shall be given to all qualifying characteristics of a historic property, including those that may have been identified subsequent to the original evaluation of the property's eligibility for the National Register. Adverse effects may include reasonably foreseeable effects caused by the undertaking that may occur later in time, be farther removed in distance or be cumulative.”



Staff Recommendation

- Station designs will
 - read as a product of their time
 - not create a false sense of history
 - not obscure significant viewsheds
 - not alter historically significant street designs
- Staff agrees with the finding of No Adverse Effect on historic properties within the Area of Potential Effects

Staff will submit the Landmarks Commission's comments to the FTA designee

