

Northeast Area Plan



Northeast Area Plan Team

Dan McAuliffe

Angela Puerta

Jeff Gregger

Kirstie Laatsch

Lisa McNabola

Kevin Firchow

1/31/24 - Project update – Transportation Commission

Northeast Area

- 7,666 acres
- 14,790 residents
- 6,800 housing units
- 43.7% BIPOC
- 20,798 jobs



Meetings and Outreach



- January 31st meetings (virtual + in-person)
- Multi-agency Open House - March 29
- Sandburg Elementary PTO - May 4
- Community Meetings (virtual + in-person) – May30/31
- Make Music Madison – June 21
- Westchester Gardens Block Party – June 24
- Sandburg Neighborhood Walk and Talk – July 12
- Northeast Connect Events – Aug 15 & 16
- Burke Height Walk and Talk – Sept 27
- Community Open House w DOT – December 18
- *Community Navigators*
- *Community Surveys & Commenting map*



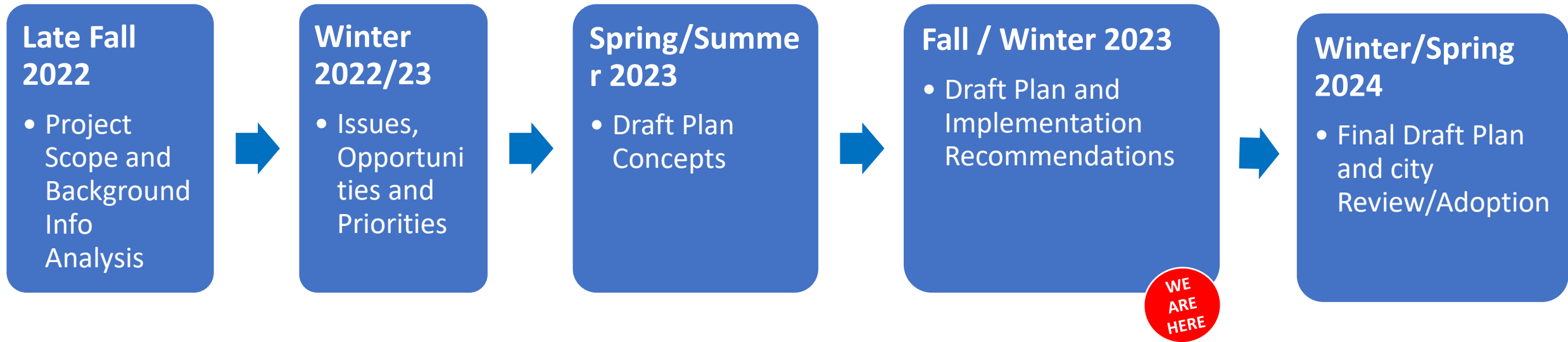
Themes in public comment



- Excitement about BRT and E. Washington Redevelopment
- Desire for more walkable destinations
- Concern about housing affordability
- Fragmented bike network
- Excitement about Imagination Center
- Concern about homeless and impacts
- Safety: lighting improvements and neighborhood traffic management



Process and Recommendation Framework

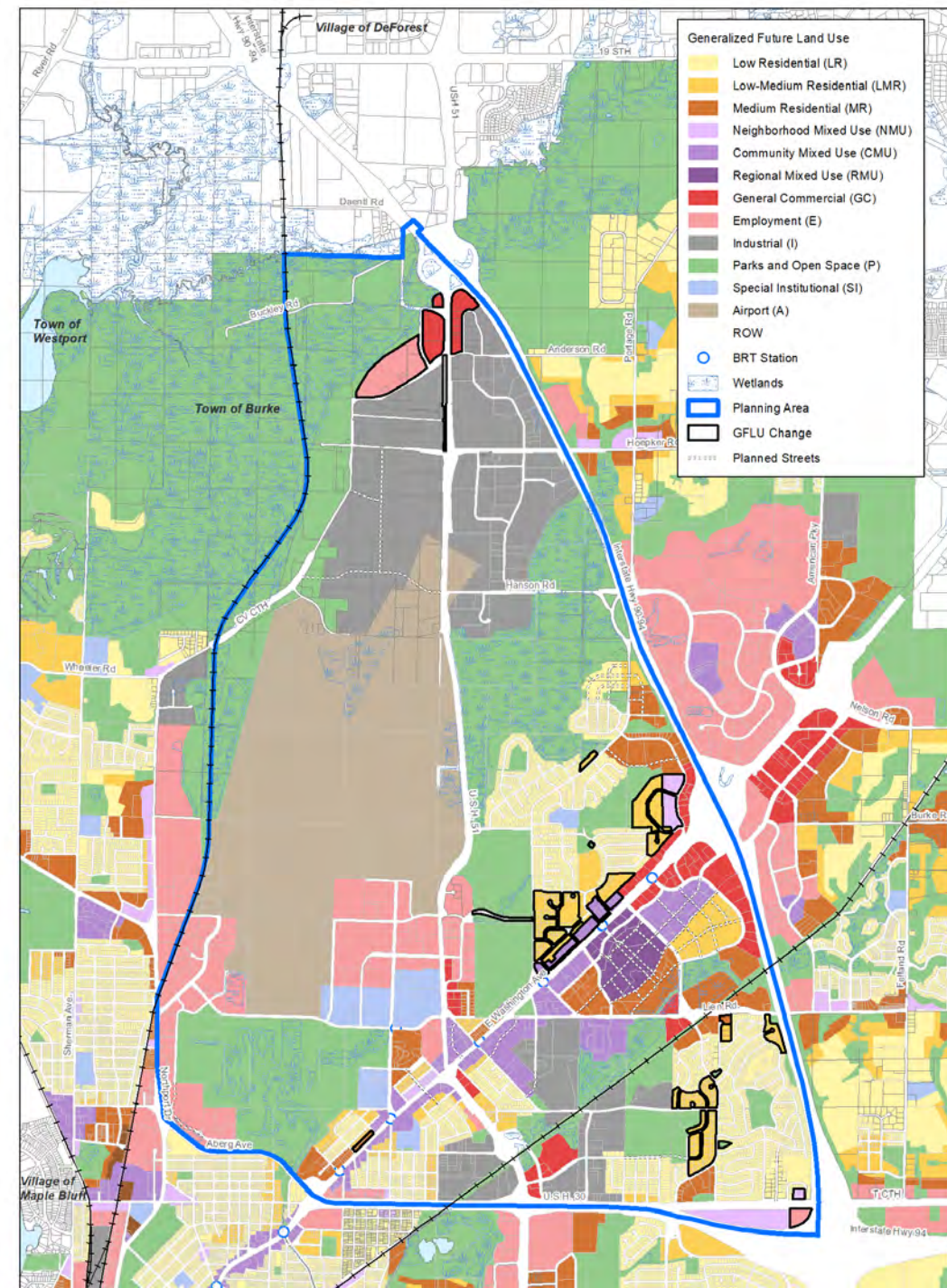


Northeast Area Plan: Chapters



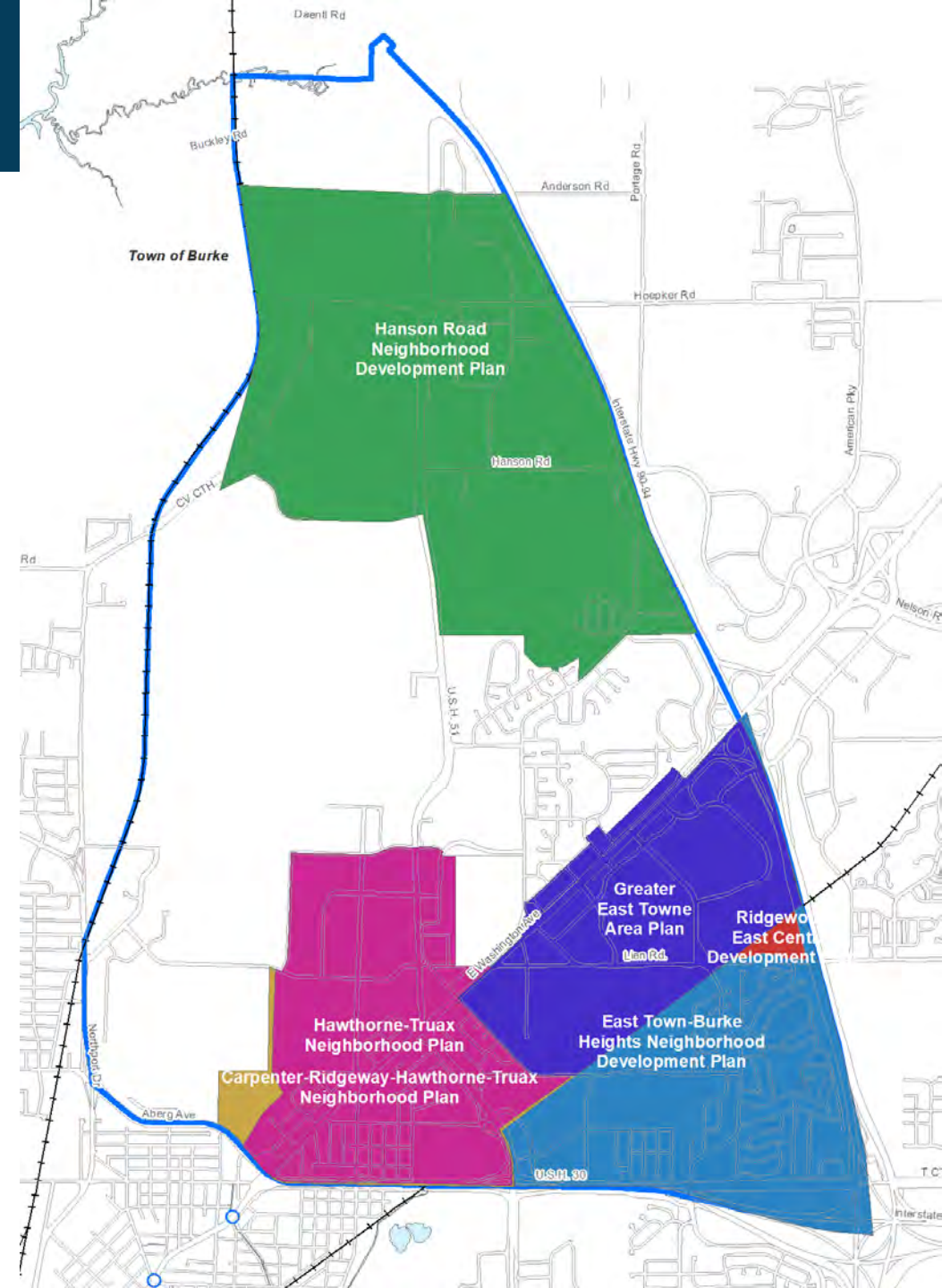
Land Use

- Recommended Changes:
 - Mixed-Use north of East Washington
 - Low-Medium Residential (missing middle) within neighborhoods
 - Commercial and Employment at CTH CV and Hwy 51

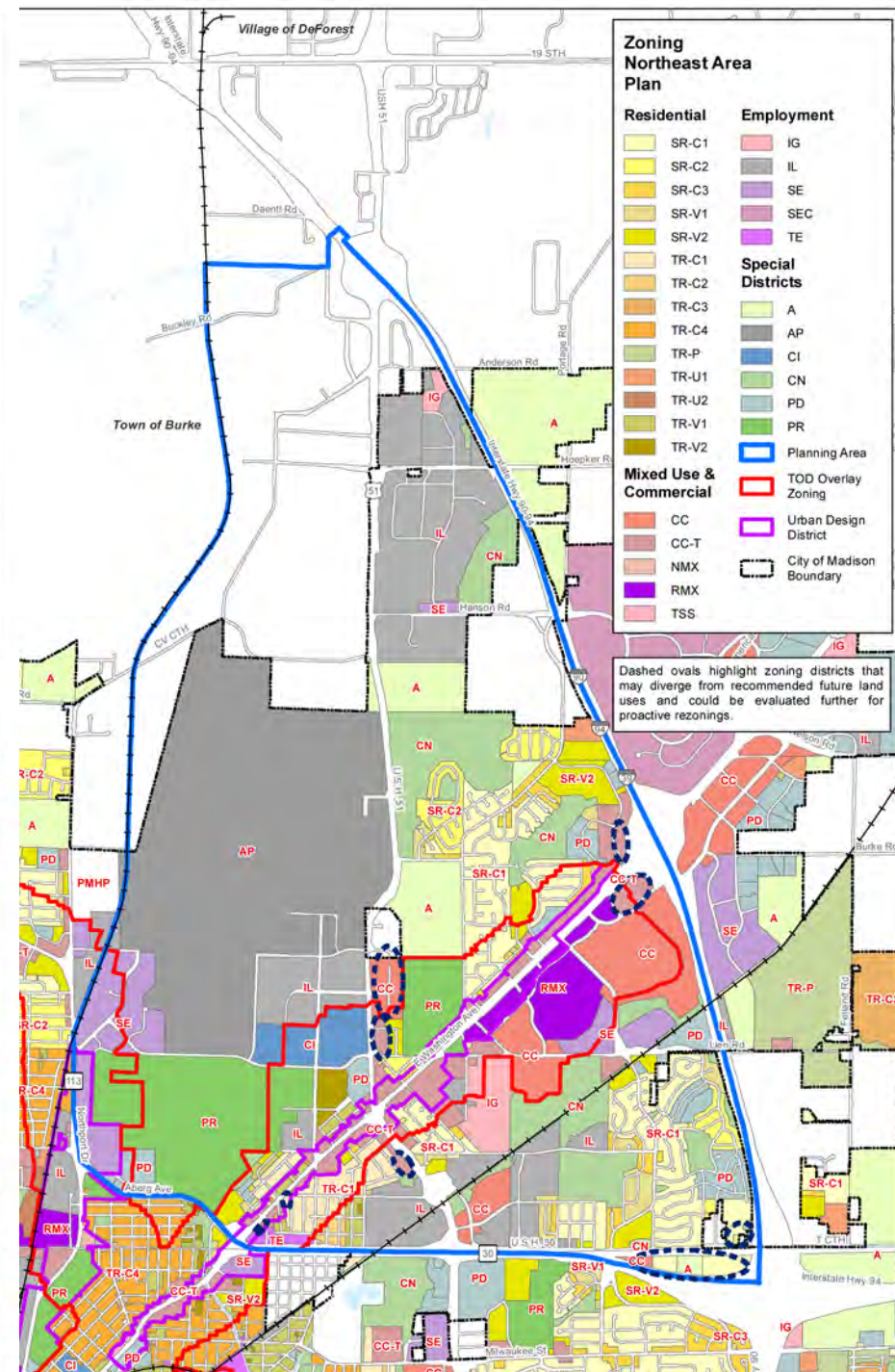
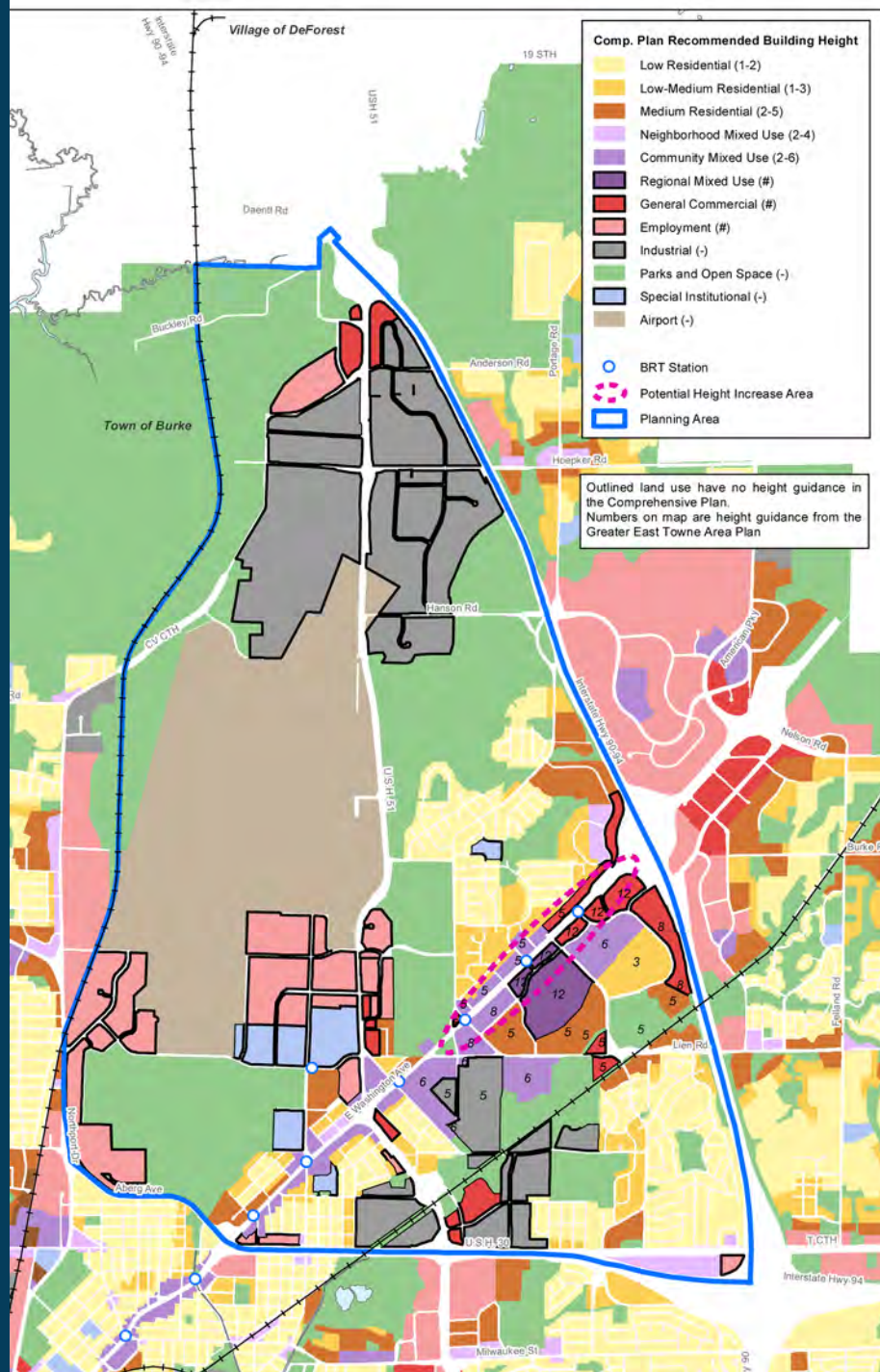


Existing Plan Evaluation

- Existing plans to be archived with adoption of Northeast Area Plan
 - Include relevant recommendations into Northeast Area Plan
 - Evaluation criteria
 - Place-specific; not citywide
 - Within the City's control
 - Consistent with current policies



Land Use: Next Steps – Height map and Zoning



Transportation: Streets



**Vacate East
Washington
Frontage Roads**



**Street and Development
Character:**



VS.



Transportation: Streets



Vacate Excess ROW on Commercial Avenue



Transportation: Streets



Neighborhood street network connections: Nakoosa Trail



Transportation: WisDOT Hwy 51



- Recommendations from Hawthorne Truax Plan

3 US 51 and US 151 (East Washington Ave): Conventional Intersection

LEGEND

- PROPERTY LINE
- DRIVEWAY CLOSURE
- POTENTIAL DRIVEWAY CLOSURE
- SIDE ROAD CLOSURE
- POTENTIAL SIDE ROAD CLOSURE
- BRIDGE/STRUCTURE
- RETAINING WALL
- CONCRETE BARRIER
- BICYCLE AND/OR PEDESTRIAN FACILITY

Concept Overview:

- Maintains existing signalized intersection configuration
- Realigns the intersection angle and provides additional turn lanes

Pros	Cons
Improvements to the intersection angle and left turn lane storage capacity	Does not reduce conflict points* or address safety long-term
Maintains existing intersection configuration and urban feel	Need for additional turn lanes to meet traffic demand requires larger footprint, land acquisition, and makes it more difficult for bicyclists and pedestrians to cross
Less acquisition of property than other concepts	Property acquisitions and/or relocations may be required
Potential for access to sideroads and commercial properties to remain open	

*Conflict points define situations where vehicles, bicycles, and/or pedestrians intersect at a point in space.

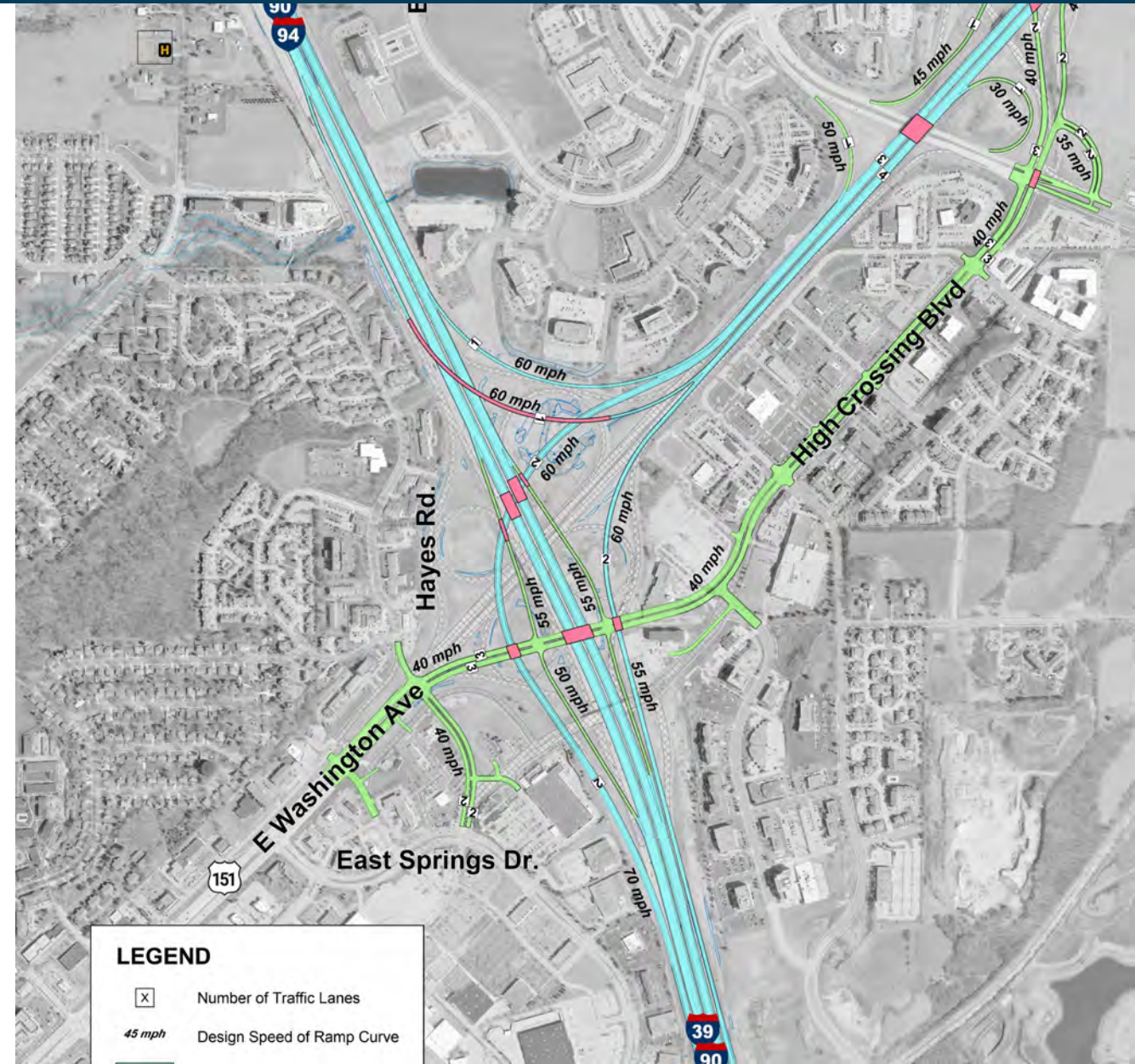
At-grade intersection, no bridges required for this concept alternative.
Number of lanes, length of turn lanes, and other geometric elements are conceptual and may not reflect final design.

US 51 (Stoughton Road) North Study

Transportation: WisDOT I-39/90/94

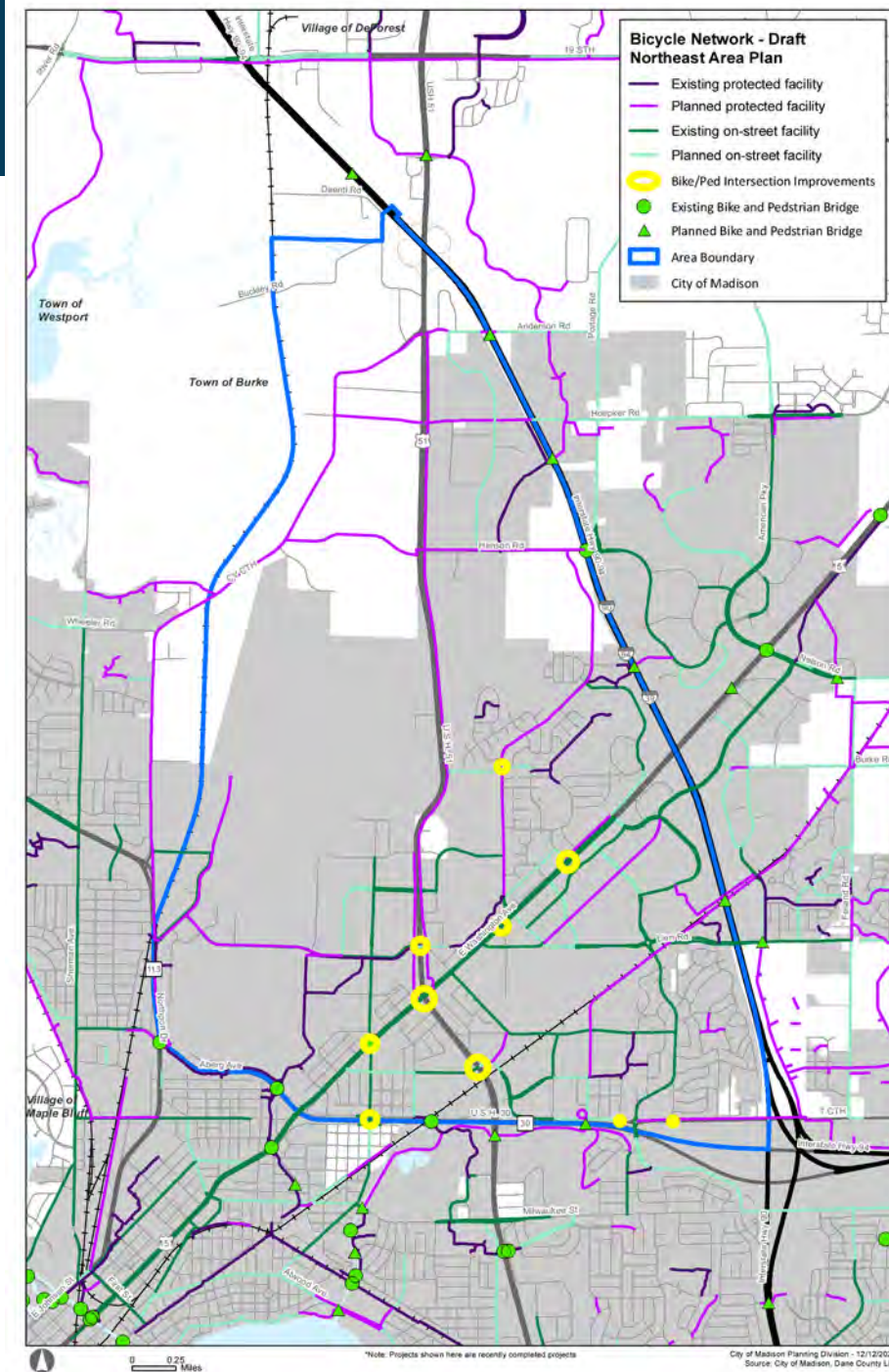
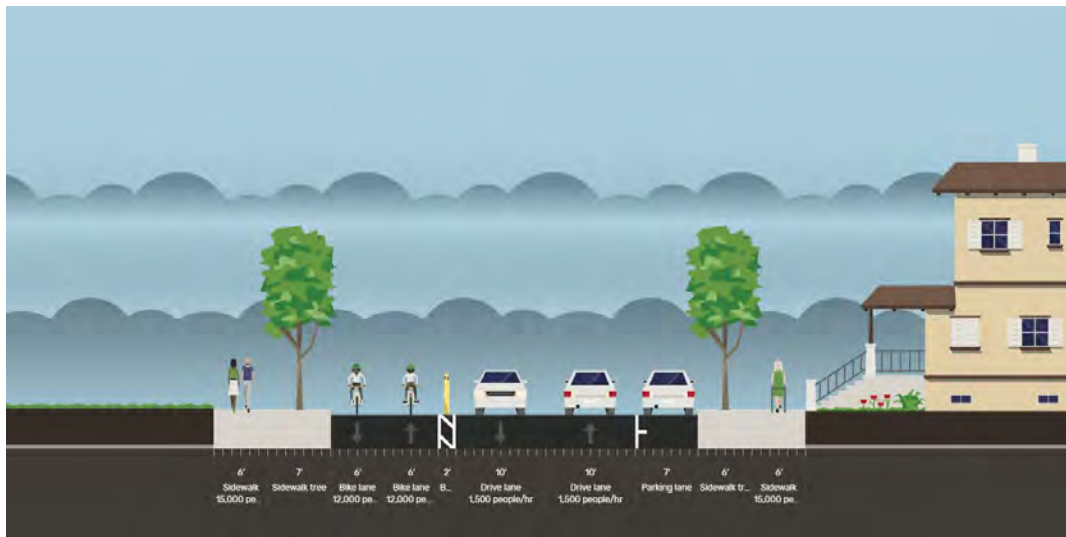


- Focus on impacts to East Washington
- Transition from highway to urban arterial
- Lowering speed, removing free-flow ramp, improving local access



Transportation: Bike + Ped

- Addressing “fragmented network”
 - Improve crossings of Hwy 51
 - Better links for off-street paths
 - Improve important on-street routes



Community Action Strategy



Burke Heights

Top 5	Community Action Project- in Order	Potential Location
1	Lighting and Safety	<ul style="list-style-type: none"> Sycamore Park Neighborhoods surrounding Sycamore Park Speed limit signs along Sycamore and Mendota
2	Community Garden	<ul style="list-style-type: none"> Sycamore Park Fruit trees
3	Bike Pump Track	<ul style="list-style-type: none"> Mayfair Park
4	Permanent Games in Parks	<ul style="list-style-type: none"> Mayfair Park
5	Amphitheatres/Stages	<ul style="list-style-type: none"> Mayfair Park



Next Steps



- **Height mapping**
 - **Proactive Rezoning and Official map recommendations**
 - **Prepare draft document**
-
- **Present draft document - April 2024**
 - **Plan adoption process – May-June 2024**