

Observation View
 Sea Level = 1032.8'
 Arch = 209.51'
 City Datum = 187.2'
 Mech Penthouse
 Arch = 208.25'
 Sea Level = 1031.54'

Arch = 197.83'
 Sea Level = 1021.12'

Arch = 187.5'
 Sea Level = 1010.79'

Arch = 174.83'
 Sea Level = 998.12'

Arch = 164.33'
 Sea Level = 987.62'

Arch = 153.83'
 Sea Level = 977.12'

Arch = 143.33'
 Sea Level = 966.62'

Arch = 131.83'
 Sea Level = 955.12'

Arch = 122.08'
 Sea Level = 945.37'

Arch = 111.29'
 Sea Level = 934.54'

Arch = 100.00'
 Sea Level = 923.29'
 City Datum = 77.99'



KEY NOTES

- (A) STUCCO-COLOR 1 -XXX
- (B) STUCCO-COLOR 2 -XXX
- (C) EXISTING BRICK
- (D) LIMESTONE-1 (HONED)
- (E) LIMESTONE-2 (LEVEE LEDGE)
- (F) GRANITE-1 (BLACK)
- (G)
- (H) DARK AND MED BRONZE ALUM WINDOW SYSTEM (OPERABLE)
- (I) DARK AND MED BRONZE ALUM STOREFRONT SYSTEM
- (J) METAL ACCENT SET IN STONE MED BRONZE
- (K) FABRIC AWNING
- (L) ALUM RAILING
- (M) BRASS ENTRY DOOR
- (N) 48" TALL LED LIGHT FIXTURE
- (O) 24" TALL LED LIGHT FIXTURE
- (P) FLAG POLES
- (Q) ALUM SILL (MED BRONZE)
- (R) EXISTING WALL LOUVERS
- (S) EXISTING WALL PACK LIGHT
- (T) CLAD BRACKET
- (U) CABLE SUPPORTS
- (V) METAL CLAD TRIM
- (W) SIGNAGE
- (X) METAL CORNICE (MED BRONZE)
- (Y) METAL CLAD CANOPY (MED BRONZE)

Cap Preservation View
 Existing Mech Penthouse

Sea Level = 1032.8'
 Arch = 209.51' City Datum = 197 Z
 Arch = 208.25'
 Sea Level = 1031.54'

Arch = 197.83'
 Sea Level = 1021.12'

Arch = 187.5'
 Sea Level = 1010.79'

Arch = 174.83'
 Sea Level = 998.12'

Arch = 164.33'
 Sea Level = 987.62'

Arch = 153.83'
 Sea Level = 977.12'

Arch = 143.33'
 Sea Level = 966.62'

Arch = 131.83'
 Sea Level = 955.12'

Arch = 122.08'
 Sea Level = 945.37'

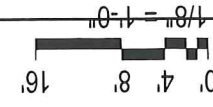
Arch = 111.25'
 Sea Level = 934.54'

Arch = 100.00'
 Sea Level = 923.29' City Datum = 77.89

KEY NOTES

- A STUCCO-COLOR 1 -XXX
- B STUCCO-COLOR 2 -XXX
- C EXISTING BRICK
- D LIMESTONE-1 (HONED)
- E LIMESTONE-2 (LEVEE LEDGE)
- F GRANITE-1 (BLACK)
- G
- H DARK AND MED BRONZE ALUM WINDOW SYSTEM (OPERABLE)
- I DARK AND MED BRONZE ALUM STOREFRONT SYSTEM
- J METAL ACCENT SET IN STONE MED BRONZE
- K FABRIC AWNING
- L ALUM RAILING
- M BRASS ENTRY DOOR
- N 48" TALL LED LIGHT FIXTURE
- O 24" TALL LED LIGHT FIXTURE
- P FLAG POLES
- Q ALUM SILL (MED BRONZE)
- R EXISTING WALL LOUVERS
- S EXISTING WALL PACK LIGHT
- T CLAD BRACKET
- U CABLE SUPPORTS
- V METAL CLAD TRIM
- W SIGNAGE
- X METAL CORNICE (MED BRONZE)
- Y METAL CLAD CANOPY (MED BRONZE)

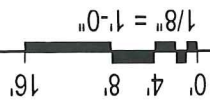




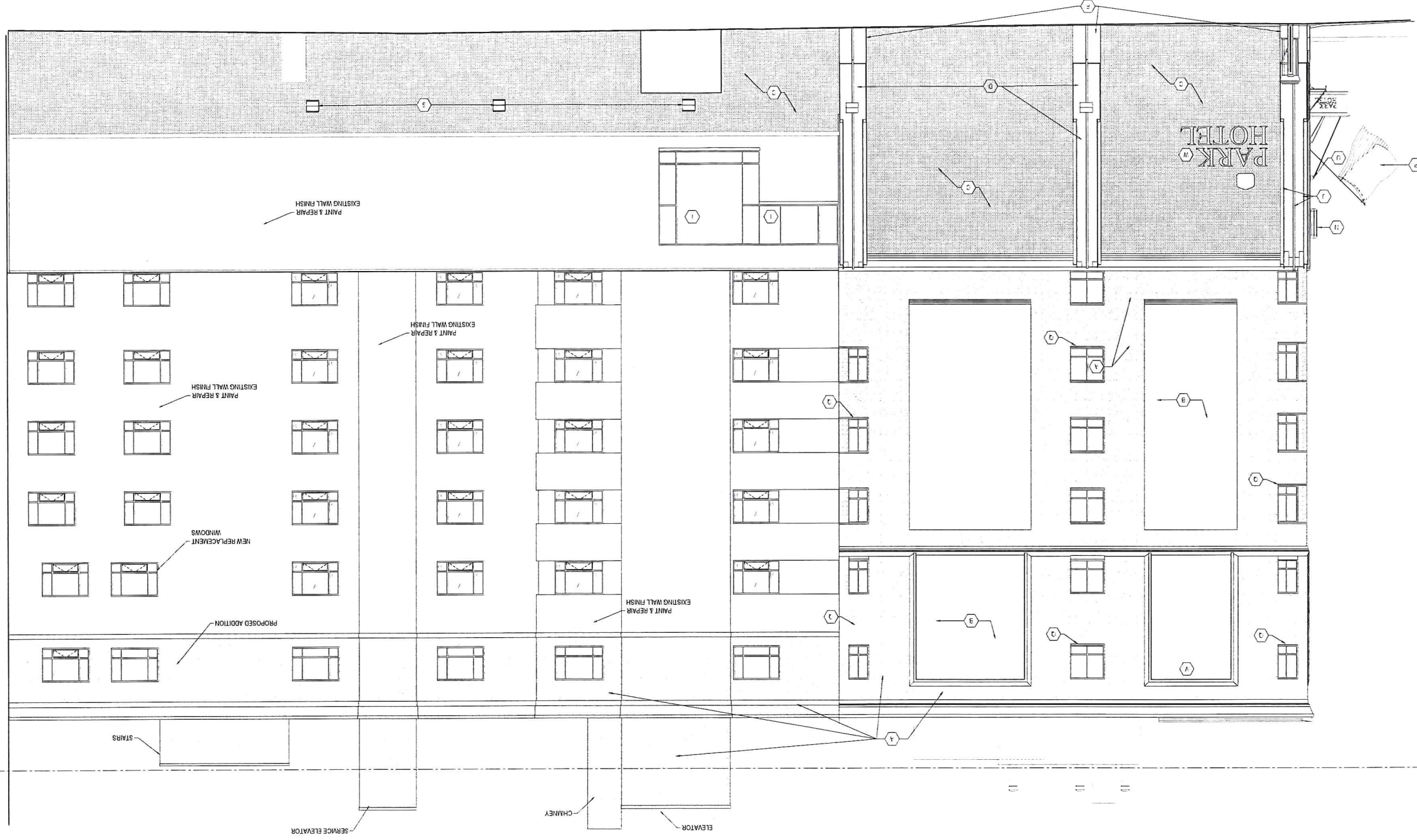
- KEY NOTES**
- 1 STUCCO-COLOR 1 -00X
 - 2 STUCCO-COLOR 2 -00X
 - 3 EXISTING BRICK
 - 4 LIMESTONE-1 (HONEY)
 - 5 LIMESTONE-2 (LEVEE LEDGE)
 - 6 GRANITE-1 (BLACK)
 - 7 DARK AND MED BRONZE
 - 8 ALUM WINDOW SYSTEM (OPERABLE)
 - 9 ALUM AND MED BRONZE
 - 10 DARK AND MED BRONZE
 - 11 ALUM STONEFRONT SYSTEM
 - 12 METAL ACCENT SET IN STONE
 - 13 MED BRONZE
 - 14 FABRIC RAILING
 - 15 ALUM RAILING
 - 16 BRASS ENTRY DOOR
 - 17 48" TALL LED LIGHT FIXTURE
 - 18 24" TALL LED LIGHT FIXTURE
 - 19 FLAG POLES
 - 20 ALUM SILL (MED BRONZE)
 - 21 EXISTING WALL LOUVERS
 - 22 EXISTING WALL PACK LIGHT
 - 23 CLAD BRACKET
 - 24 CABLE SUPPORTS
 - 25 METAL CLAD TRIM
 - 26 SIGNAGE
 - 27 METAL CORNICE (MED BRONZE)
 - 28 METAL CLAD CANOPY (MED BRONZE)
 - 29 BRONZE

- Arch = 1022.8 City Datum = 187.2
- Arch = 209.51
- Arch = 1031.54
- Arch = 197.5
- Arch = 1010.79
- Arch = 174.83
- Arch = 998.12
- Arch = 143.33
- Arch = 966.62
- Arch = 131.87
- Arch = 553.12
- Arch = 122.08
- Arch = 945.37
- Arch = 111.35
- Arch = 934.54
- Arch = 100.00 City Datum = 77.99

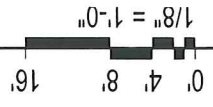
PROPERTY LINE



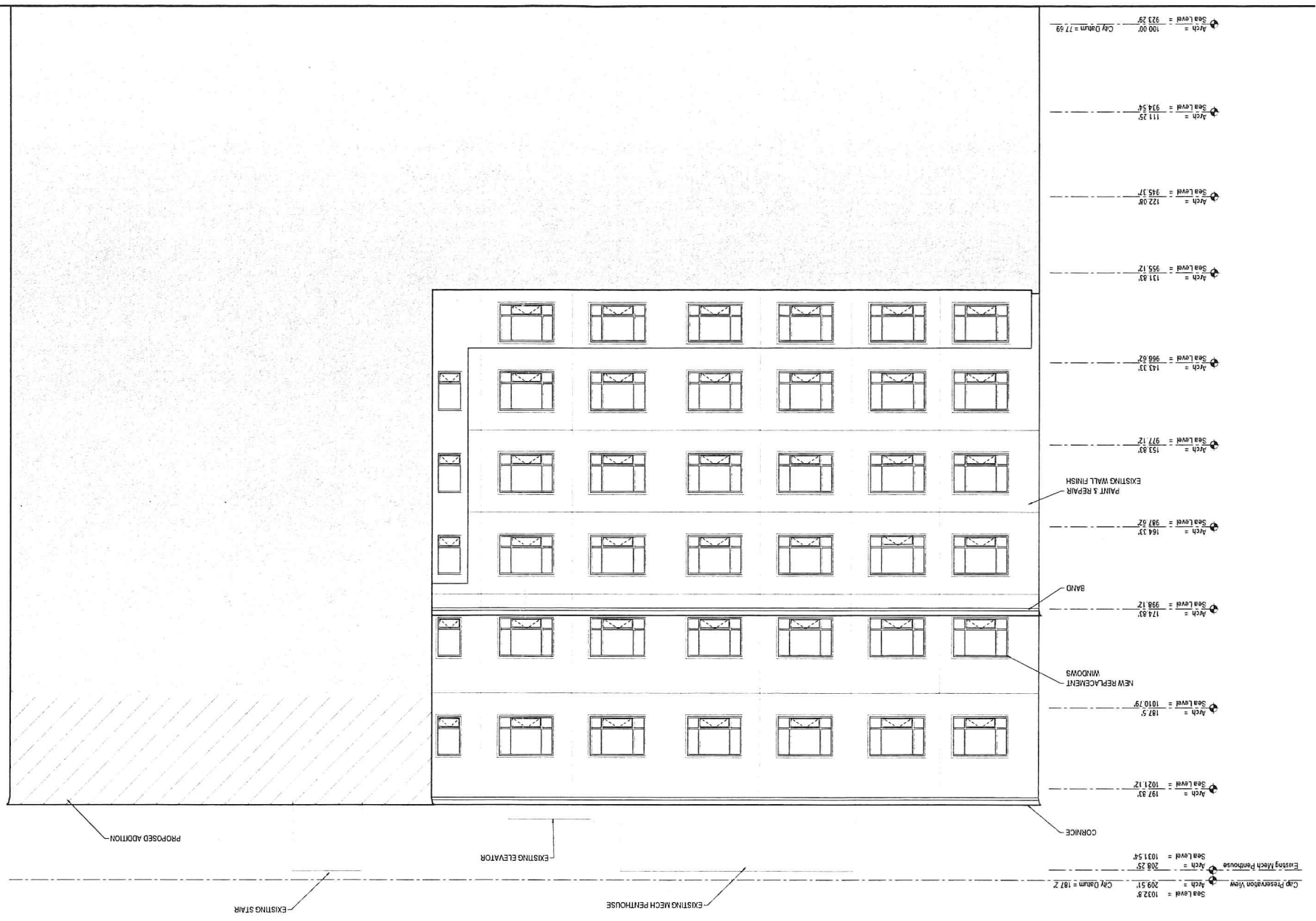
- KEY NOTES**
- 1 STUCCO-COLOR 1 -XXX
 - 2 STUCCO-COLOR 2 -XXX
 - 3 EXISTING BRICK
 - 4 LIMESTONE-1 (HONED)
 - 5 LIMESTONE-2 (LEVEL LEDGE)
 - 6 GRANITE-1 (BLACK)
 - 7 DARK AND MED BRONZE ALUM WINDOW SYSTEM (OPERABLE)
 - 8 DARK AND MED BRONZE ALUM STOREFRONT SYSTEM
 - 9 MED BRONZE METAL ACCENT SET IN STONE
 - 10 FABRIC AWNING
 - 11 ALUMIN RAILING
 - 12 BRASS ENTRY DOOR
 - 13 48" TALL LED LIGHT FIXTURE
 - 14 24" TALL LED LIGHT FIXTURE
 - 15 FLAG POLES
 - 16 ALUMIN SILL, MED BRONZE
 - 17 EXISTING WALL LOUVERS
 - 18 EXISTING WALL PACK LIGHT
 - 19 CLAD BRACKET
 - 20 CABLE SUPPORTS
 - 21 METAL CLAD TRIM
 - 22 SIGNAGE
 - 23 METAL CORNICE (MED BRONZE)
 - 24 METAL CLAD CANOPY (MED BRONZE)



- SEA LEVEL = 1022.8
ACH = 209.51
CITY DRAIN = 187.2
- SEA LEVEL = 1021.12
ACH = 197.97
- SEA LEVEL = 1010.79
ACH = 187.57
- SEA LEVEL = 998.12
ACH = 174.83
- SEA LEVEL = 987.62
ACH = 164.13
- SEA LEVEL = 977.12
ACH = 153.83
- SEA LEVEL = 966.62
ACH = 143.13
- SEA LEVEL = 955.12
ACH = 133.83
- SEA LEVEL = 945.37
ACH = 122.98
- SEA LEVEL = 934.54
ACH = 111.25
- SEA LEVEL = 923.29
ACH = 100.00
CITY DRAIN = 77.98



- KEY NOTES**
- 1 STUCCO-COLOR 1 XXX
 - 2 STUCCO-COLOR 2-XXX
 - 3 EXISTING BRICK
 - 4 LIMESTONE-1 (HONEY)
 - 5 LIMESTONE-2 (LEVEE LEDGE)
 - 6 GRANITE-1 (BLACK)
 - 7 DARK AND MED BRONZE
 - 8 DARK AND MED BRONZE ALUM WINDOW SYSTEM (OPERABLE)
 - 9 DARK AND MED BRONZE ALUM STOREFRONT SYSTEM
 - 10 METAL ACCENT SET IN STONE MED BRONZE
 - 11 FABRIC AWNING
 - 12 ALUM RAILING
 - 13 BRASS ENTRY DOOR
 - 14 48" TALL LED LIGHT FIXTURE
 - 15 24" TALL LED LIGHT FIXTURE
 - 16 FLAG POLES
 - 17 ALUM SILL (MED BRONZE)
 - 18 EXISTING WALL LOUVERS
 - 19 EXISTING WALL PACK LIGHT
 - 20 CLAD BRACKET
 - 21 CABLE SUPPORTS
 - 22 METAL CLAD TRIM
 - 23 SIGNAGE
 - 24 METAL CORNICE (MED BRONZE)
 - 25 METAL CLAD CANOPY (MED BRONZE)



Scale Level = 1002.5' City Datum = 187.2'
 Scale Level = 208.5'
 Scale Level = 1031.5'
 Existing Mech Penthouse
 Scale Level = 197.5'
 Scale Level = 1010.5'
 NEW REPLACEMENT WINDOWS
 Scale Level = 174.85'
 Scale Level = 398.12'
 BAND
 Scale Level = 164.33'
 Scale Level = 397.82'
 EXISTING WALL FINISH
 Scale Level = 153.85'
 Scale Level = 977.12'
 Scale Level = 143.33'
 Scale Level = 396.82'
 Scale Level = 131.85'
 Scale Level = 555.12'
 Scale Level = 122.08'
 Scale Level = 345.37'
 Scale Level = 111.85'
 Scale Level = 974.54'
 Scale Level = 323.25'
 City Datum = 177.99'