

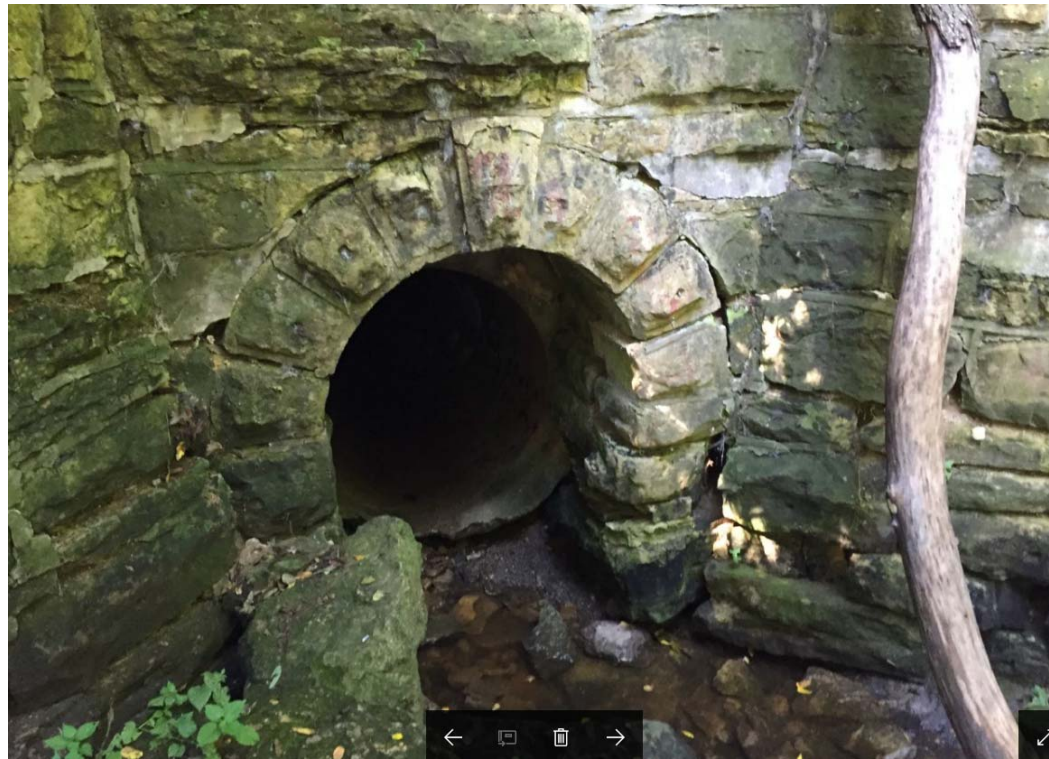
# STORMWATER IMPROVEMENTS GLENWOOD CHILDREN'S PARK

BOARD OF PARK COMMISSIONERS JULY 2018

# LOCATION



# EXISTING LIMESTONE RAILROAD ARCH SUMMER 2017



# EXISTING LIMESTONE RAILROAD ARCH SPRING 2018



# EROSION DOWNSTREAM OF EXISTING INLET



APRIL 2018



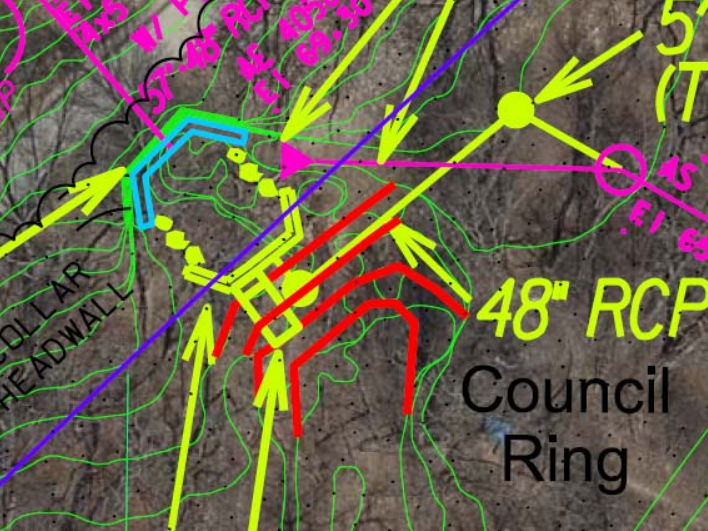
JULY 2018



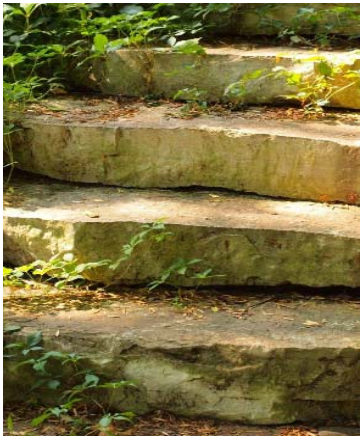
# EROSION AT THE UPSTREAM STORM SEWER CAUSED BY FAILURE OF THE DIVERSION WALL



# PROPOSED IMPROVEMENTS



# DESIGN EXAMPLES



STEPED  
OVERFLOW



TYPICAL PIPE WITH NO  
SURFACE TREATMENTS



FORM LINERS

STONE VENEER

