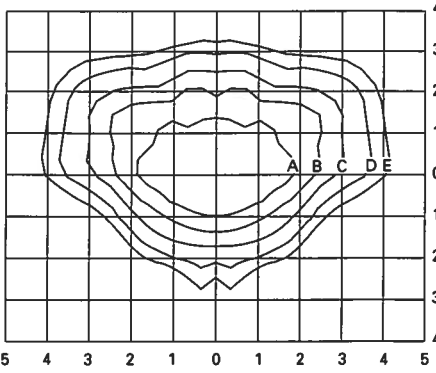
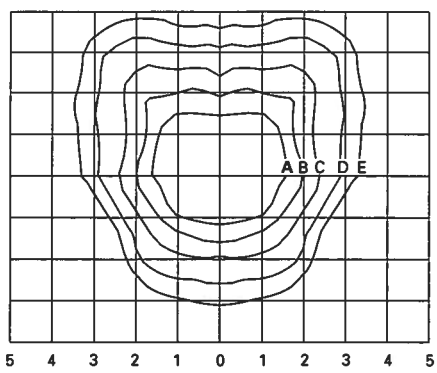


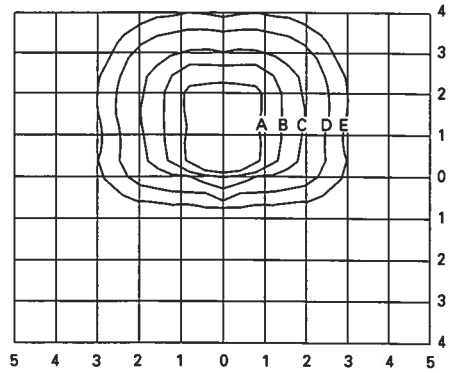
PHOTOMETRICS



CAL-400-MH-MT-3S
400-Watt MH Type III Segmented
40,000-Lumen Clear Lamp



CAL-400-MH-MT-4S
400-Watt MH Type IV Segmented
40,000-Lumen Clear Lamp



CAL-400-MH-MT-SL
400-Watt MH Forward Throw Spill Light Eliminator
40,000-Lumen Clear Lamp

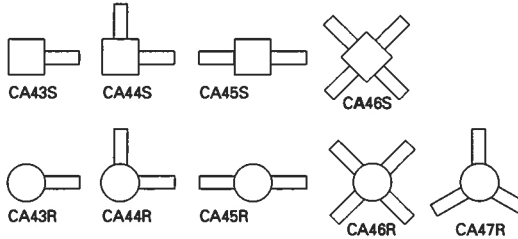
Footcandle Table

Select mounting height and read across for footcandle values of each isofootcandle line. Distance in units of mounting height.

Mounting Height	Footcandle Values for Isofootcandle Lines				
	A	B	C	D	E
20'	3.00	1.50	0.75	0.30	0.15
25'	2.00	1.00	0.50	0.20	0.10
30'	1.50	0.75	0.37	0.15	0.08

Top Mounting for Square and Round Poles (order separately)

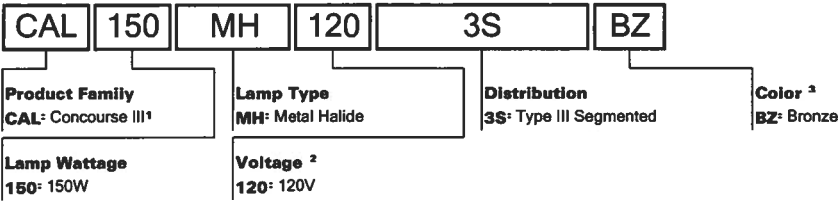
Accommodates 2 3/8"-3" O.D. vertical tenons (arm included). Catalog number includes slipfitter and mounting arm(s). Square unit height is 6 1/4". Round unit height is 6 3/4".



Catalog Number	E.P.A.	Wt. (lbs.)
CA43S	1.2	39
CA44S	2.3	75
CA45S	2.3	75
CA46S	2.3	146
CA43R	1.2	39
CA44R	2.3	75
CA45R	2.3	75
CA46R	2.3	145
CA47R	2.4	111

ORDERING INFORMATION

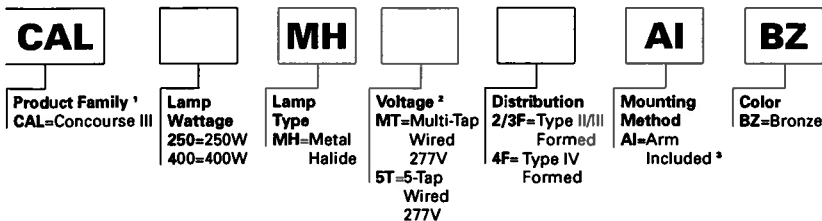
CAL-150-MH-120-3S-BZ



Notes: 1 Bracket arm not included with standard units. One bracket arm must be ordered for each standard unit (see Accessories). 2 Product also available in non-US voltages and 50Hz for international markets. Consult factory for availability and ordering information. 3 Add as suffix. Must specify color. 4 Add as suffix in the order shown. 5 Order separately, replace XX with color suffix.

STOCK SAMPLE NUMBER (Lamp included):

SAMPLE NUMBER: CAL-400-MH-5T-2/3F-AI-BZ



NOTES (stock): 1 Stock product comes standard with lamp. Other options not available with stock products. Refer to standard ordering information. 2 MT only available with 250W, 5T only available with 400W. 3 CA42 included - Arm and 3 1/2"-4" round pole adapter.

DESCRIPTION

The McGraw-Edison Concourse III is the most versatile, functionally designed, universally adaptable outdoor lighting luminaire available. Through a variety of mounting styles, it offers a family of low profile sharp-cutoff luminaires that make optimum use of today's high output HID sources.

Enhancing natural landscapes as well as cityscapes, the Concourse III brings outstanding performance and style to walkways, parking lots, roadways, loading docks, building areas, and any security lighting application. U.L. listed and CSA certified for wet locations.

SPECIFICATION FEATURES

A ... Latches

Two spring-steel quick release latches on housing for toolless entry.

B ... Socket

Porcelain mogul-base screw shell type lamp socket with spring-loaded center contact.

C ... Housing

One-piece, die-cast aluminum housing features aesthetically pleasing soft-corner design.

D ... Gasketing

Closed cell gas-filled high temperature silicone gasketing completely seals optical system from dirt, bugs or other foreign material.

E ... Lens

Thermal shock- and impact resistant clear tempered glass.

F ... Optics

Optional high efficiency segmented or hydroformed reflectors available in a range of distributions. Reflector modules attach to the housing. All reflectors are field rotatable in 90° increments.(5)

G ... Mounting

Universal mounting clamp concealed in housing fits 1 1/2" to 2 3/8" O.D. horizontal tenons without adapters. Provides a +5° vertical leveling adjustment. An mounting option includes arm and round pole adapter with the fixture for single carton shipment.

H ... Ballast

Easily removable high power factor HID multi-tap ballast is standard.

J ... Hinges

Integral hinges prevent door rocking and optimize sealing capabilities.

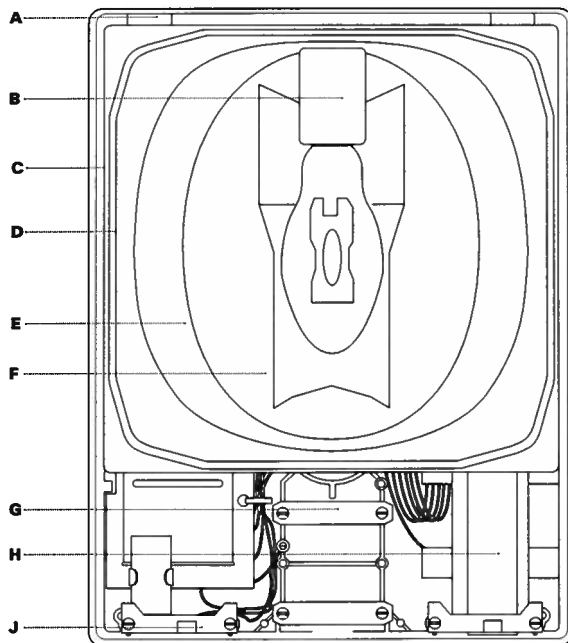
Catalog #	CAL-150-MH-120-3S-BZ	Type	
Project		Date	
Comments			
Prepared by			01/22/2008



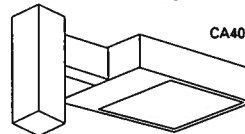
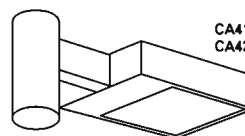
CAL CONCOURSE III

70 - 400W
High Pressure Sodium
Metal Halide

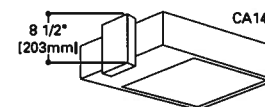
ARCHITECTURAL
AREA LUMINAIRE



DIRECT ARM MOUNTINGS



WALL MOUNT ADAPTER



ENERGY DATA

Hi-Reactance Ballast Input Watts

70W HPS HPF (95 Watts)
70W MH HPF (94 Watts)
100W HPS HPF (130 Watts)
100W MH HPF (129 Watts)

CWA Ballast Input Watts

150W MH HPF (210 Watts)
175W MH HPF (210 Watts)
250W HPS HPF (300 Watts)
250W MH HPF (295 Watts)
400W HPS HPF (465 Watts)
400W MH HPF (455 Watts)

EPA

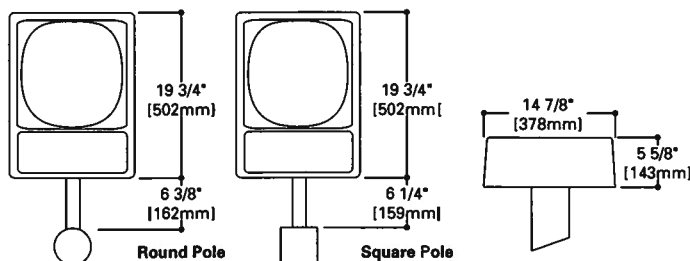
Effective Projected Area: 0.9

SHIPPING DATA

Approximate Net Weight:
39 lbs. (18 kgs.)



DIMENSIONS



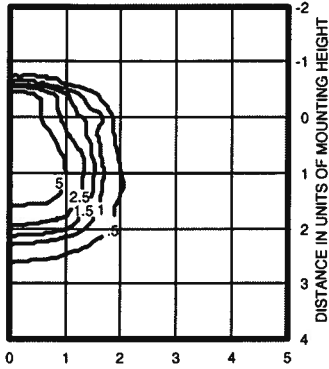
Specifications and Dimensions subject to change without notice.

Consult your representative for additional options and finishes.

WST Metal Halide, High Pressure Sodium Building Mounted

WST 175M FT TEST NO: LTL11069

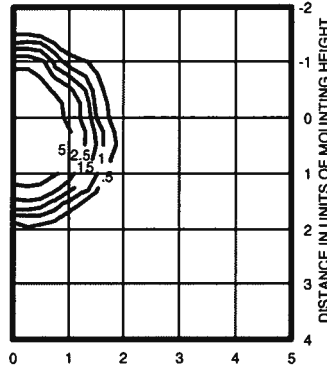
ISOILLUMINANCE PLOT (Footcandle)



175W metal halide lamp, horizontal lamp orientation
Footcandle values based on 12'
mounting height, 12800 rated lumens.
Luminaire Efficiency: 52.9%

WST 175M MD TEST NO: LTL11068

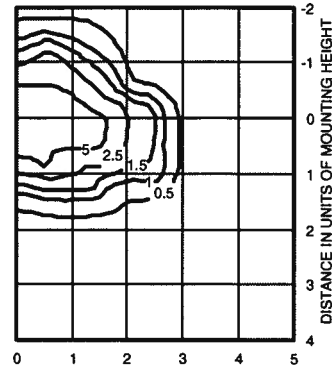
ISOILLUMINANCE PLOT (Footcandle)



175W metal halide lamp, horizontal lamp orientation
Footcandle values based on 12'
mounting height, 11080 rated lumens.
Luminaire Efficiency: 60.2%

WST 175M WT TEST NO: LTL11070

ISOILLUMINANCE PLOT (Footcandle)



175W metal halide lamp, horizontal lamp orientation
Footcandle values based on 12'
mounting height, 12800 rated lumens.
Luminaire Efficiency: 62.4%

Lamp	Initial Lumens	Mounting Height			
		10'	12'	14'	16'
Metal Halide					
50W MH	3,900	0.43	0.30	0.22	0.17
70W MH	5,500	0.62	0.43	0.31	0.24
100W MH	8,500	0.95	0.66	0.48	0.37
150W MH	12,500	1.41	0.98	0.72	0.55
175W MH	12,800	1.44	1.0	0.73	0.56
High Pressure Sodium					
35W HPS	2,250	0.26	0.18	0.13	0.10
50W HPS	4,000	0.45	0.31	0.23	0.17
70W HPS	6,400	0.72	0.50	0.37	0.28
100W HPS	9,500	1.07	0.74	0.54	0.41
150W HPS	16,000	1.80	1.25	0.91	0.70

FEATURES & SPECIFICATIONS

INTENDED USE— For building- and wall-mounted applications.

CONSTRUCTION — Rugged, die-cast, single-piece aluminum housing. Die-cast door frame has a 1/8" thick tempered glass lens. Door frame is fully gasketed with one-piece solid silicone.

FINISH — Standard finish is textured dark bronze (DDBT) corrosion-resistant polyester powder finish. Additional architectural colors are available; see www.lithonia.com/archcolors. Striping is also available.

OPTICAL SYSTEM — Segmented reflectors for superior uniformity and control. Reflectors are interchangeable. Three full cutoff distributions available: FT (forward throw), MD (medium throw) and WT (wide throw).

ELECTRICAL SYSTEM — Ballast: 50W-150W utilizes a high reactance, high power factor ballast. Metal halide 150W and below are standard with pulse-start technology. 35S utilizes a reactance high power factor ballast. 175W utilizes a constant-wattage autotransformer ballast. Quick disconnect plug easily disconnects reflector from ballast. Ballasts are copper-wound and 100% factory-tested.

Socket: Porcelain, medium-base socket with copper alloy, nickel-plated screw shell and center contact. UL listed 660W, 600V 4KV pulse rated.

INSTALLATION — Universal mounting mechanism with integral mounting support allows fixture to hinge down. Bubble level provides correct alignment with each installation.

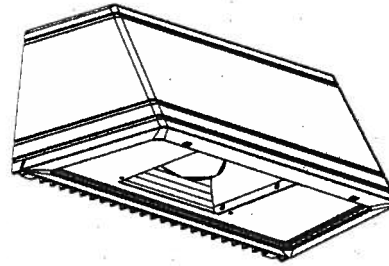
LISTING — UL Listed (standard). CSA Certified (see Options). Suitable for wet locations (damp location listed in lens-up orientation). WLU option offers wet location listing in up orientation (see Options). IP65 rated. 25°C ambient

NOTE: Specifications subject to change without notice.

Catalog Number	
Notes	Type

Decorative Wall-Mounted Lighting

WST



METAL HALIDE
50W-175W
HIGH PRESSURE SODIUM
35W-150W

Specifications

Length: 16.25 (41.2)

Depth: 9.13 (23.2)

Overall Height: 7.25 (18.4)

*Weight: 30 lbs (13.6 kg)

* Weight as configured in example below.

All dimensions are inches (centimeters) unless otherwise specified.

ORDERING INFORMATION

For shortest lead times, configure product using **standard options (shown in bold)**.

Example: WST 175M FT TB LPI

Series	Wattage/ source	Distribution	Voltage	Ballast	Options	Lamp ¹⁶
WST	High pressure sodium 35S ¹ 50S 70S 100S 150S Metal halide 50M 70M 100M 150M 175M	FT Forward throw MD Medium throw (coated lamp std.) WT Wide throw	120 208 ² 240 ² 277 347 TB³ TBV⁴ 23050HZ ⁵	(blank) Magnetic ballast CWI Constant wattage isolated	Shipped installed in fixture SF Single fuse 120, 277, 347V DF Double fuse 208, 240V DC12 Emergency circuit 12 volt (35W lamp included std.) ⁶ 2DC12 Emergency circuit 12 volt (2, 35W lamps included) ⁶ DC2012 Emergency circuit 12 volt (20W lamp included) ⁶ 2DC2012 Emergency circuit 12 volt (2, 20W lamps included) ⁶ DFL Diffusing lens EC Emergency circuit ^{7,8} IBS Internal backlight shield ⁹ PE Photoelectric cell-button type (n/a TB/TBV) ^{10,11} QRS Quartz restrike system ^{8,12} WLU Wet location door for up orientation CSA CSA Certified NOM NOM Certified Shipped separately BBW Surface-mounted back box ¹³ UT5 Uptilt 5 degrees ¹³ WG Wire guard ¹⁰ VG Vandal guard ¹⁰	LPI Lamp included L/LP Less lamp
						Finish¹⁴ (blank) Dark bronze, textured DSST Sandstone, textured DNAT Natural aluminum, textured DWHG White, textured DBLB Black, textured CR Enhanced corrosion resistant CRT Non-stick protective coating ¹⁵

NOTES:

- 120V.
- Must specify CWI for use in Canada.
- Optional multi-tap ballast (120, 208, 240, 277V); (120, 277, 347V in Canada; ships as 120V/347V).
- Optional 5-tap ballast (120, 208, 240, 277, 480V; not available in Canada). 175W metal halide only.
- Consult factory for available wattages.
- Not available with SF, DF or QRS.
- Not available with QRS or OCs.
- Maximum allowable wattage lamp included.
- Not available with Medium Throw (MD, MDU, MDU5) distributions.
- Must be ordered with fixture; cannot be field installed.
- Not available with 347V.
- Not available with EC or DCs.
- May be ordered as an accessory.
- See www.lithonia.com/archcolors for additional color options.
- Black finish only.
- Must be specified.
- Must specify finish.

Accessories¹⁷

Order as separate catalog number.

- WSBBW Surface-mounted back box
- WSUT5 Uptilt 5 degrees

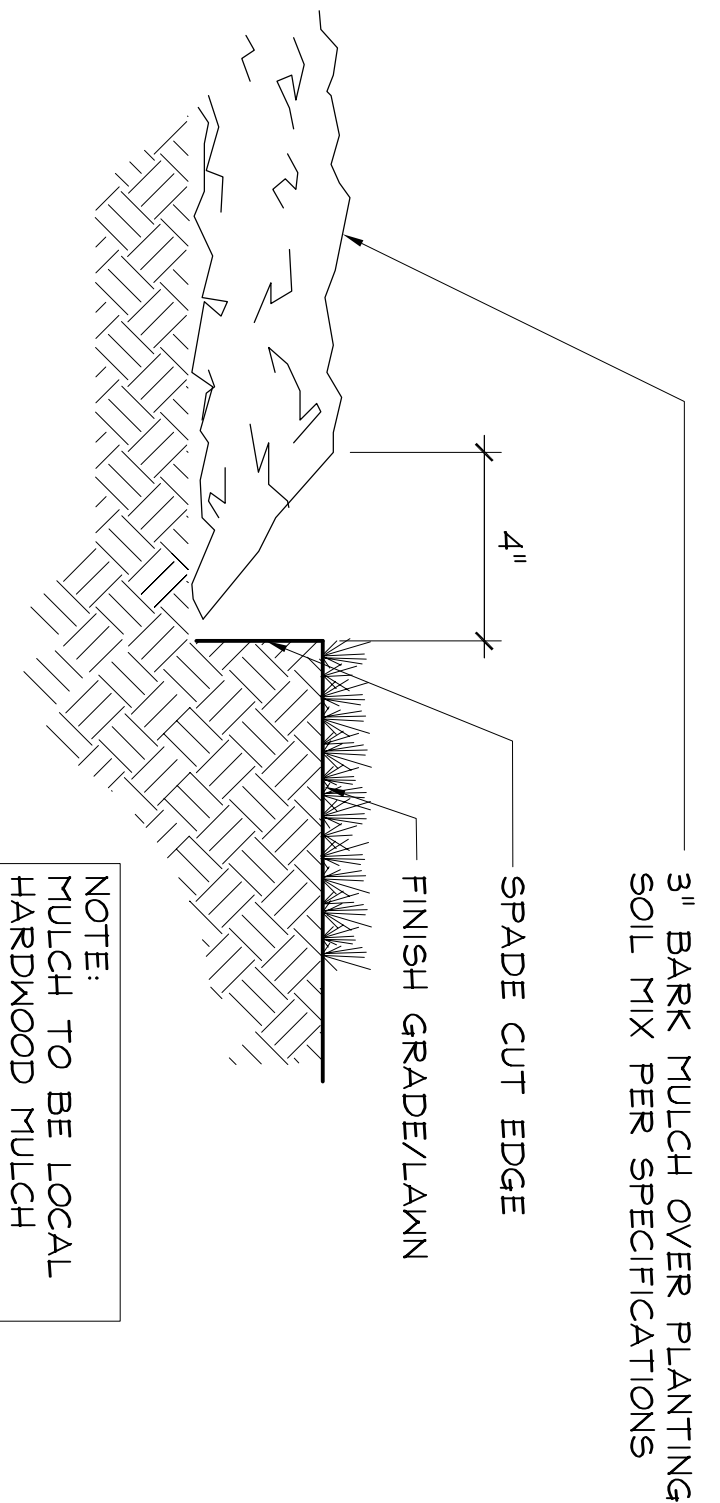


Consistent with LEED® goals & Green Globes™ criteria for light pollution reduction

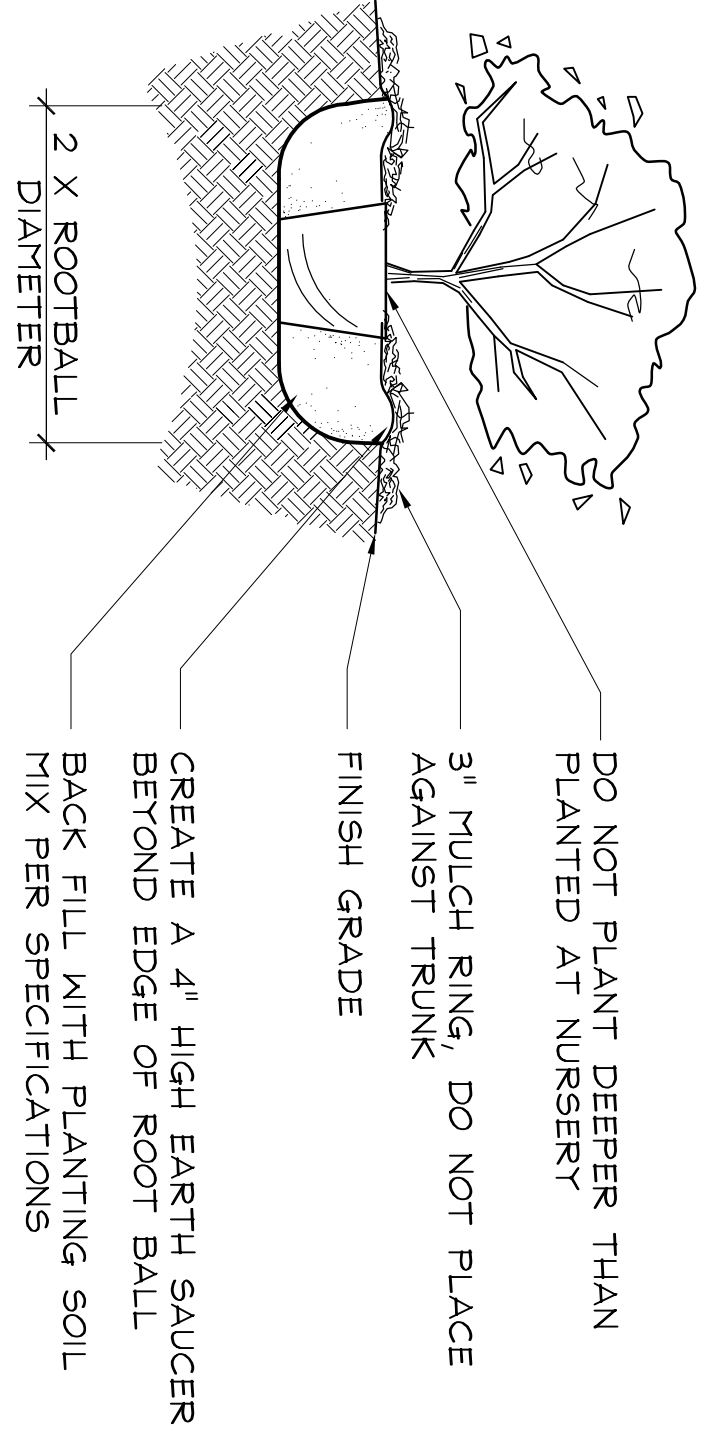


CREEK BANK SEEDING MIX
LAKE/RIVER EDGE MEADOW
Agrecol - Madison, WI (608) 226-2544

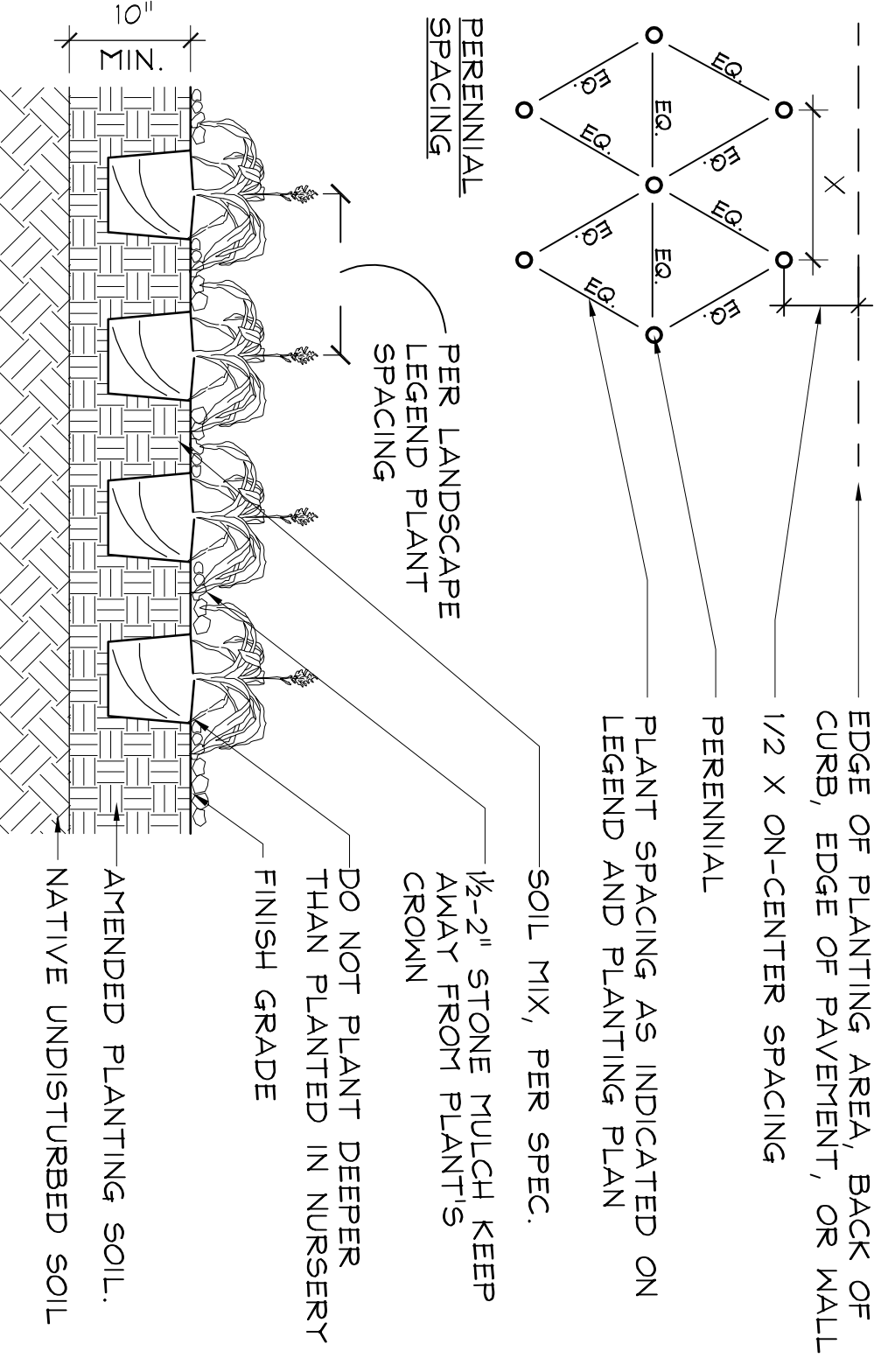
LATIN NAME	COMMON NAME	LATIN NAME	COMMON NAME
MILDFLOWERS		LEGUMES	
Agrostache foeniculum	Lovender Hyssop	Baptisia leucantha	White Wild Indigo
Acorus calamus	Sweet Flag	Cassia hebecarpa	Illinois Bundle Flower
Asclepias incarnata	Red Milkweed	Desmodium illinoensis	Canada Tick Trefoil
Asclepias drummondii	Drummond's Asclepias	Desmodium canadensis	Canada Tick Clover
Aster puniceus	New England Aster	Petalostemum canadense	Purple Prairie Clover
Aster novae-angliae	Arrow-leaved Aster	Petalostemum purpureum	
Aster sagittifolius	Purple Coneflower		
Echinacea purpurea	Spotted Joe Pye Weed	SEDGES	
Eupatorium maculatum	Snowset	Carex bebbii	Bebb's Sedge
Eupatorium perforatum	Spurred	Carex comosa	Carex comosa
Helianthus autumnalis	Tall Sunflower	Carex crinita	Bristly Sedge
Helianthus giganteus	Large-flowered Sunflower	Carex hystrix	Fringed Sedge
Hypericum perforatum	St. John's Wort	Carex lacustris	Water Sedge
Hypericum pyramidatum	Pyramidal St. John's Wort	Carex saratellii	Running Marsh Sedge
Isis virginica	Wild Quinine	Carex stipitata	Fox Sedge
Liatris pycnostachya	Bluish Spurred	Carex stricta	Tussock Sedge
Lobelia spicata	Orange-top Lobelia	Carex vulpinoidea	Brown Fox Sedge
Lobelia spidioides	Great Blue Lobelia	Juncus dudleyi	Dudley's Rush
Lycopus sparganii	Water Horehound	Juncus tenuis	Path Rush
Nanopha fistulosa	Water Horehound	Juncus torreyi	Torrey's Rush
Parthenium integrifolium	Wild Quinine	Scirpus acutus	Hard-stem Bulrush
Pennisetum setosius	Smooth Panicum	Scirpus atrovirens	Dark Green Bulrush
Pennisetum setosoides	Ditch Strepocarp	Scirpus cyperinus	Moist Grass
Physostegia virginiana	Mountain Mint	Scirpus validus	Soft-stem Bulrush
Pycnanthemum virginianum	Mountain Mint	GRASSES	
Rudbeckia hirta	Yellow Coneflower	Andropogon gerardi	Big Bluestem
Rudbeckia pinata	Black-eyed Susan	Bromus ciliolatus	Fringed Bromo
Rudbeckia laciniata	Mild Golden Glow	Calamagrostis canadensis	Canada Blue
Rudbeckia subtomentosa	Sweet Black-eyed Susan	Circa arundinacea	Mud Reed Grass
Scrophularia lanceolata	Early Figwort	Elymus riparius	Riverbank Wild Rye
Silphium perfoliatum	Cupplant	Elymus virginicus	Virginia Wild Rye
Solidago graminifolia	Grass-leaved Goldenrod	Glyceria canadensis	Rattlesnake Grass
Solidago ohioensis	Ohio Goldenrod	Glyceria grandis	Giant Mana Grass
Solidago rigida	Riddell's Goldenrod	Glyceria striata	Fowl Mana Grass
Solidago rigida	Stiff Goldenrod	Spartina pectinata	Prairie Cord Grass
Sporangium angycarpum	Giant Bur-reed		
Thalictrum dasycarpum	Purple Meadow Rue		
Tradescantia ohioensis	Spiderwort		
Verbena hastata	Blue Vervain		
Vernonia fasciculata	Ironweed		
Vernonia fasciculata	Curlew's Root		
Zizia aurea	Golden Alexander		



3 SHOVEL CUT EDGE
NTS

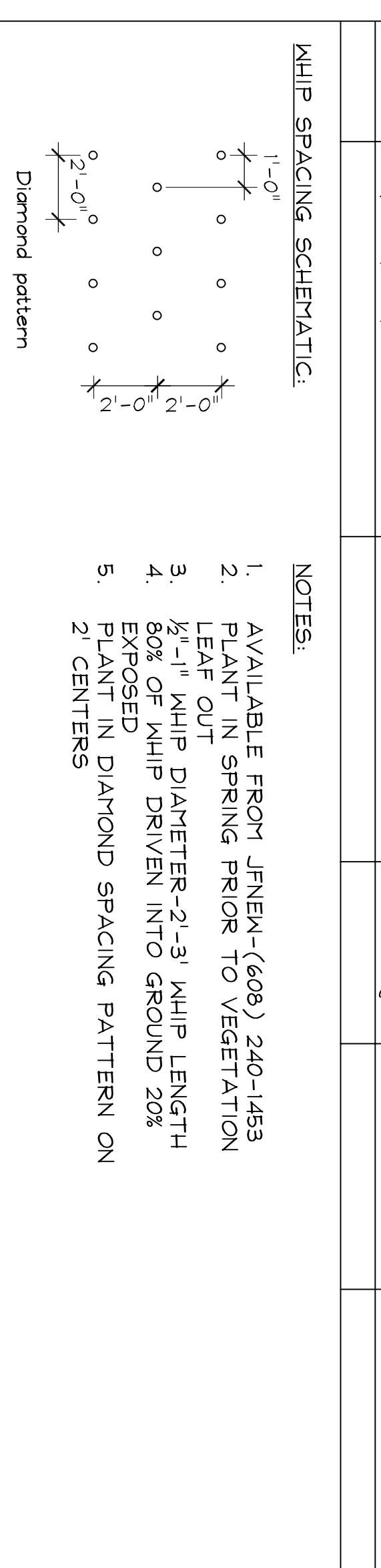


4 POTTED/CONTAINER PLANTING
NTS

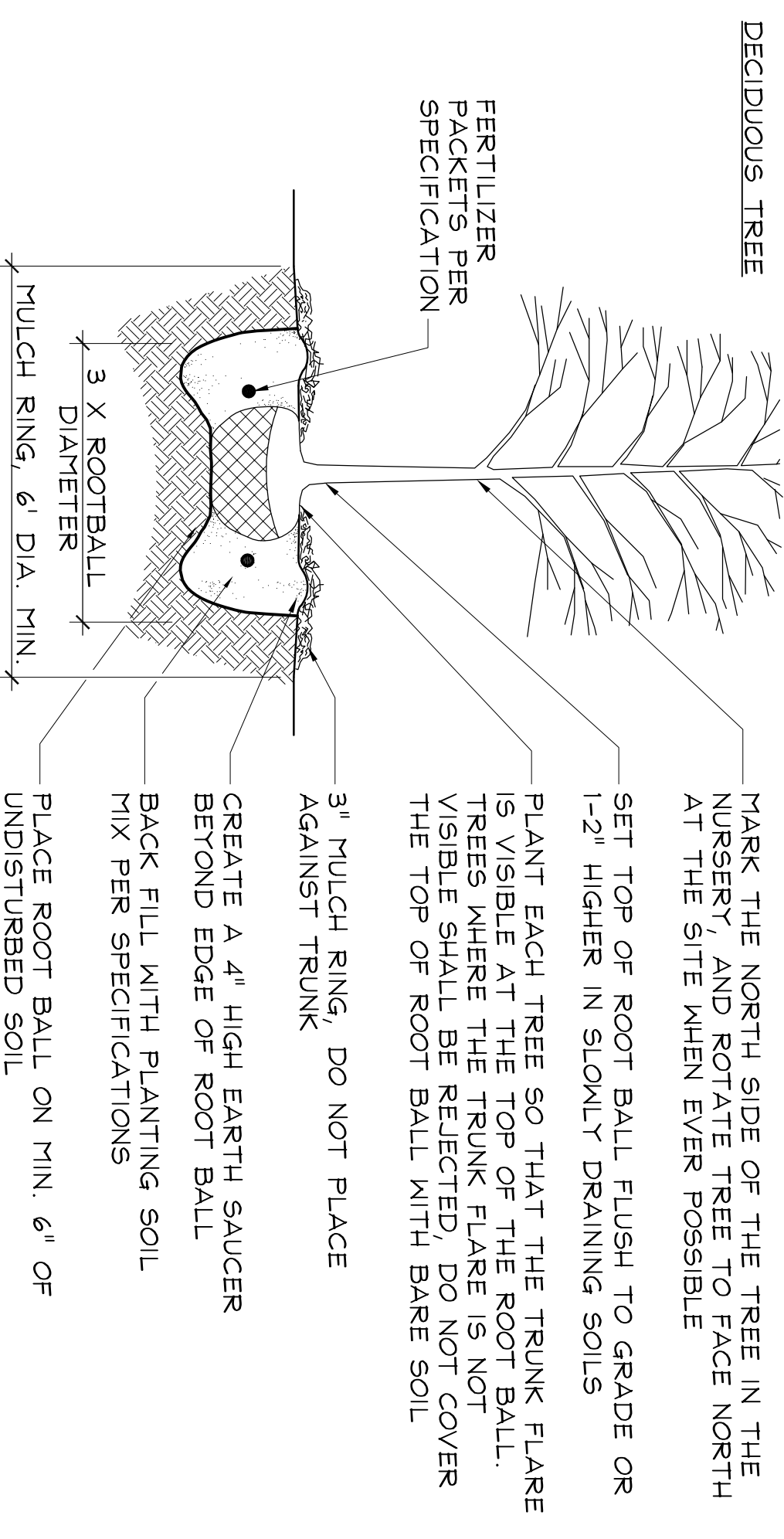


5 GROUND COVER/PERENNIAL PLANTING
NTS

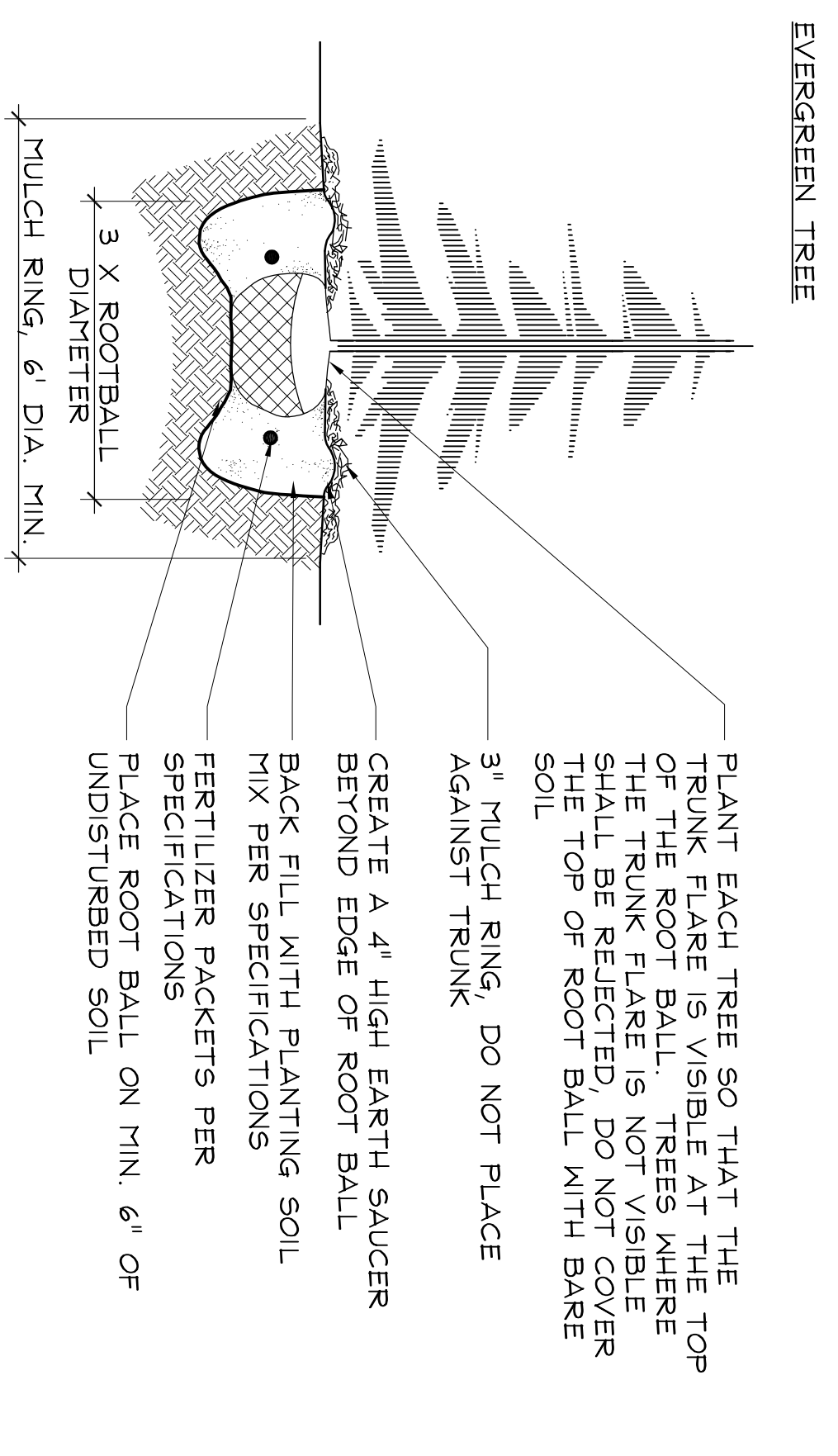
Symbol	Botanical Name	Common Name	Size/Ht.	Root.	Quantity	Comments
LANDSCAPE PLANT PALETTE						
DECIDUOUS/EVERGREEN TREES						
BN	Betula nigra	River Birch	10' Ht.	B4B	2	straight leader
OV	Ostrya virginiana	Ironwood	2 1/2' Caliper	B4B	5	straight leader
PC	Pinus Cambra	Swiss Stone Pine	7' Ht.	B4B	4	similar size/form
QB	Quercus bicolor	Swamp White Oak	3 1/2' Caliper	B4B	3	straight leader
DECIDUOUS/EVERGREEN SHRUBS						
DI	DierVilla lonicera	Dwarf Bush-Honey/suckle	5 Gal.	Cont.	29	
Cs	Cornus sericea 'Isanti'	Isanti Dogwood	3 Gal.	Cont.	8	
Jc	Juniperus chinensis 'Sea Green'	Sea Green Juniper	42" Ht.	Cont.	5	
Sp	Salix purpurea 'Canyon Blue'	Canyon Arctic Blue Willow	3 Gal.	Cont.	24	
So	Spiraea albiflora	Japanese White Spiraea	3 Gal.	Cont.	25	
Tm	Taxus x media 'Hicksii'	Hicks Yew	36" Ht.	B4B	4	similar size/form
Vm	Viburnum lantana 'Mofician'	Mofician/Viburnum	5 Gal.	Cont.	17	similar size/form
PERENNIALS/GROUNDCOVERS						
ep	Echinacea purpurea 'Magnus'	Magnus Purple Coneflower	1 Gal.	Cont.	18	
cl	Chaenanthum luteifolium	Northern Sea Oats	1 Gal.	Cont.	65	
sr	Solidago rugosa 'Fireworks'	Fireworks Goldenrod	1 Gal.	Cont.	29	
VINES						
A	Actinidia kolomikta	Actinidia kolomikta	2 Gal.	Cont.	4	
B	American Bittersweet	Celastrus scandens	2 Gal.	Cont.	4	existing vine on site
C	Campsis radicans 'Flora'	Campsis radicans 'Flora'	2 Gal.	Cont.	3	
D	Lonicera x sempervirens	Lonicera x sempervirens	2 Gal.	Cont.	4	
LIVE STAKE SCHEDULE (WHIPS)						
Symbol	Botanical Name	Common Name	Size	Spacing	%-Quantity	
MIX A						
	Cornus amomum	Silky Dogwood	2'-3' length	2' O.C.-offset	20% - xxx	
	Cornus sericea	Redosier Dogwood	2'-3' length	2' O.C.-offset	20% - xxx	
	Physocarpus opulifolius	Ninebark	2'-3' length	2' O.C.-offset	20% - xxx	
	Salix alba	Golden Weeping Willow	3' length	2' O.C.-offset	40% - xxx	
MIX B						
	Cornus amomum	Silky Dogwood	2'-3' length	2' O.C.-offset	30% - xxx	
	Cornus sericea	Redosier Dogwood	2'-3' length	2' O.C.-offset	30% - xxx	
	Physocarpus opulifolius	Ninebark	2'-3' length	2' O.C.-offset	40% - xxx	



- NOTES:**
1. AVAILABLE FROM JFNEEM-(608) 240-1453
 2. PLANT IN SPRING PRIOR TO VEGETATION
 3. LEAF OUT
 4. 1/2"-1" WHIP DIAMETER-2'-3' WHIP LENGTH
 5. 50% OF WHIP DRIVEN INTO GROUND 20% EXPOSED
- PLANT IN DIAMOND SPACING PATTERN ON

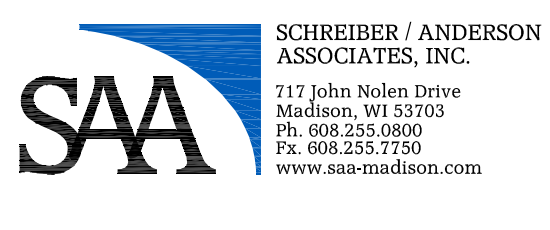


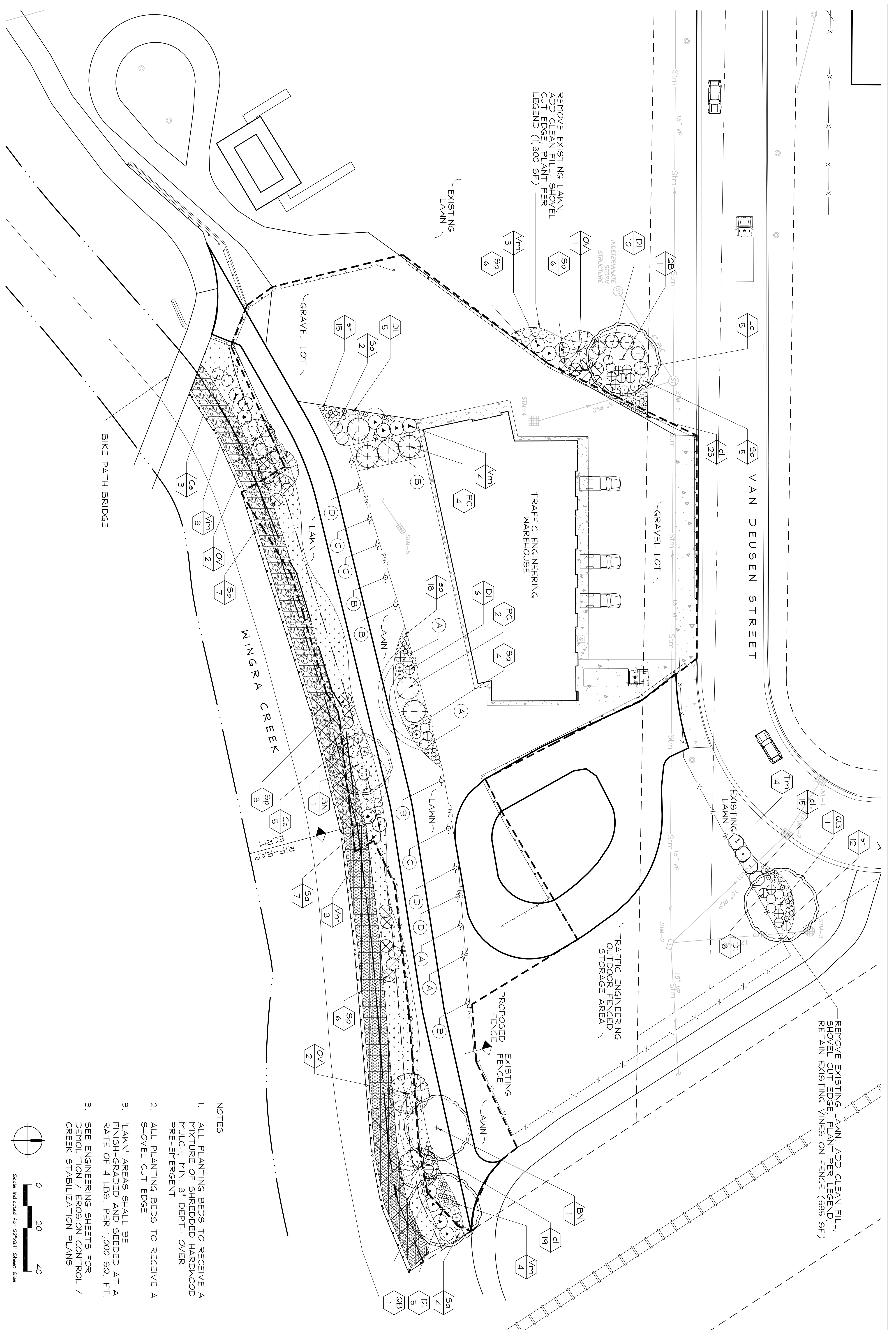
1 B&B DECIDUOUS TREE PLANTING DETAILS
NTS



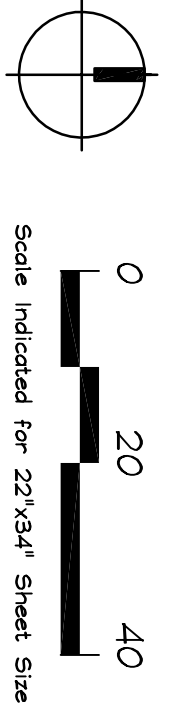
2 B&B EVERGREEN TREE PLANTING DETAILS
NTS

<p>DATE: 08_0123 DESIGNED: SAA DRAWN: AW CHECKED: CT APPR.: I</p>	<p>CLIENT NO. JOB NO. DWG NO. P-LS SHEET NO. L-002</p>	<p>NO. DATE REVISION INITIAL</p>	<p>SAYLE STREET WAREHOUSE LANDSCAPE SCHEDULE</p>
---	--	----------------------------------	---





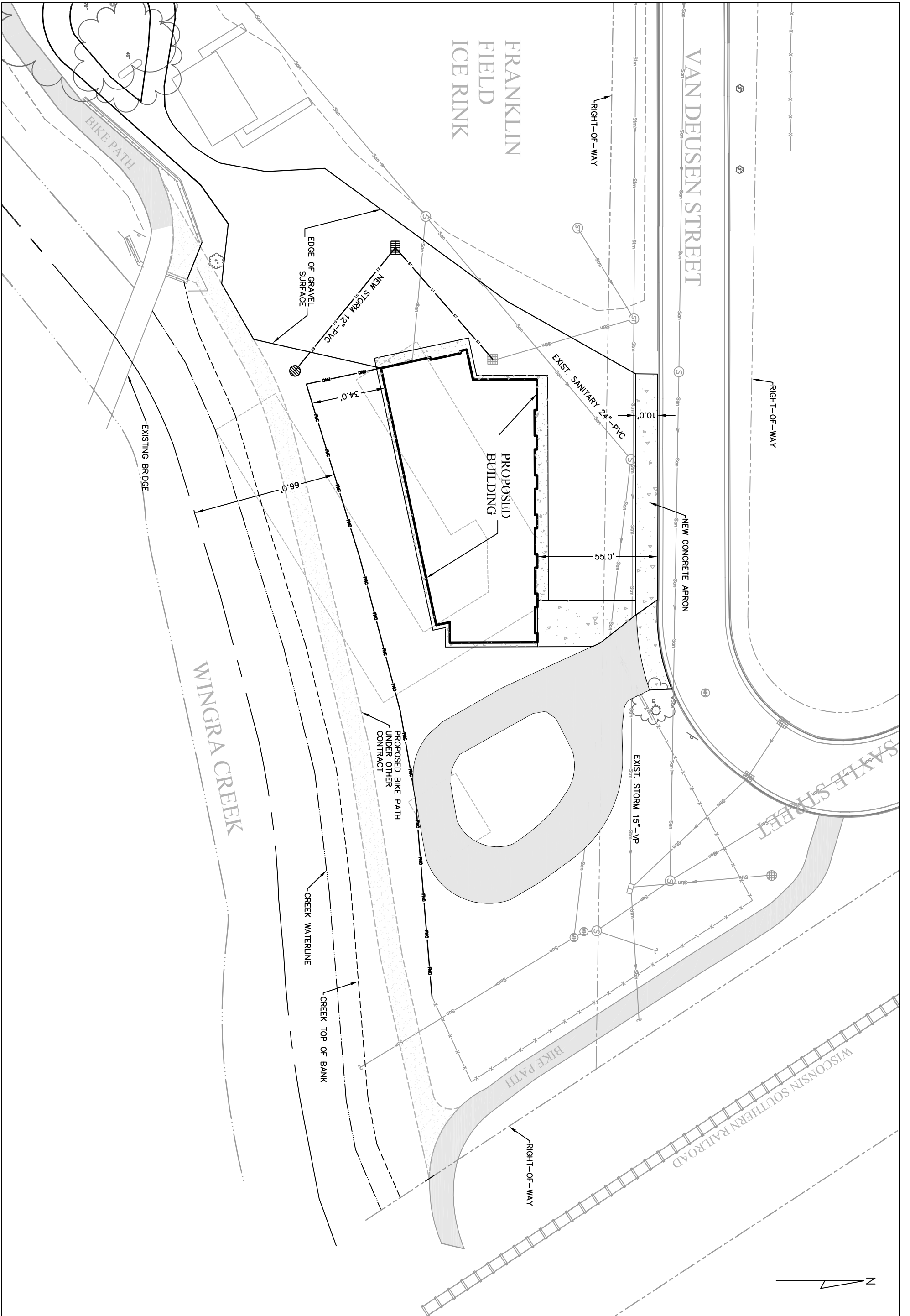
- NOTES:**
1. ALL PLANTING BEDS TO RECEIVE A MIXTURE OF SHREDED HARDWOOD MULCH, MIN. 3" DEPTH OVER PRE-EMERGENT
 2. ALL PLANTING BEDS TO RECEIVE A SHOVEL CUT EDGE
 3. 'LAWN' AREAS SHALL BE FINISH-GRADED AND SEEDED AT A RATE OF 4 LBS. PER 1,000 SQ. FT.
 3. SEE ENGINEERING SHEETS FOR DEMOLITION / EROSION CONTROL / CREEK STABILIZATION PLANS



NO.	DATE	REVISION	INITIAL

SAYLE STREET WAREHOUSE		DATE: 08_0123
LANDSCAPE SITE PLAN		DESIGNED: SAA
CLIENT NO.:		DRAWN: AW
JOB NO.:		CHECKED: CT
DWG NO.:	2257	APPR.: I
P-LS		
SHEET NO.:	L-001	



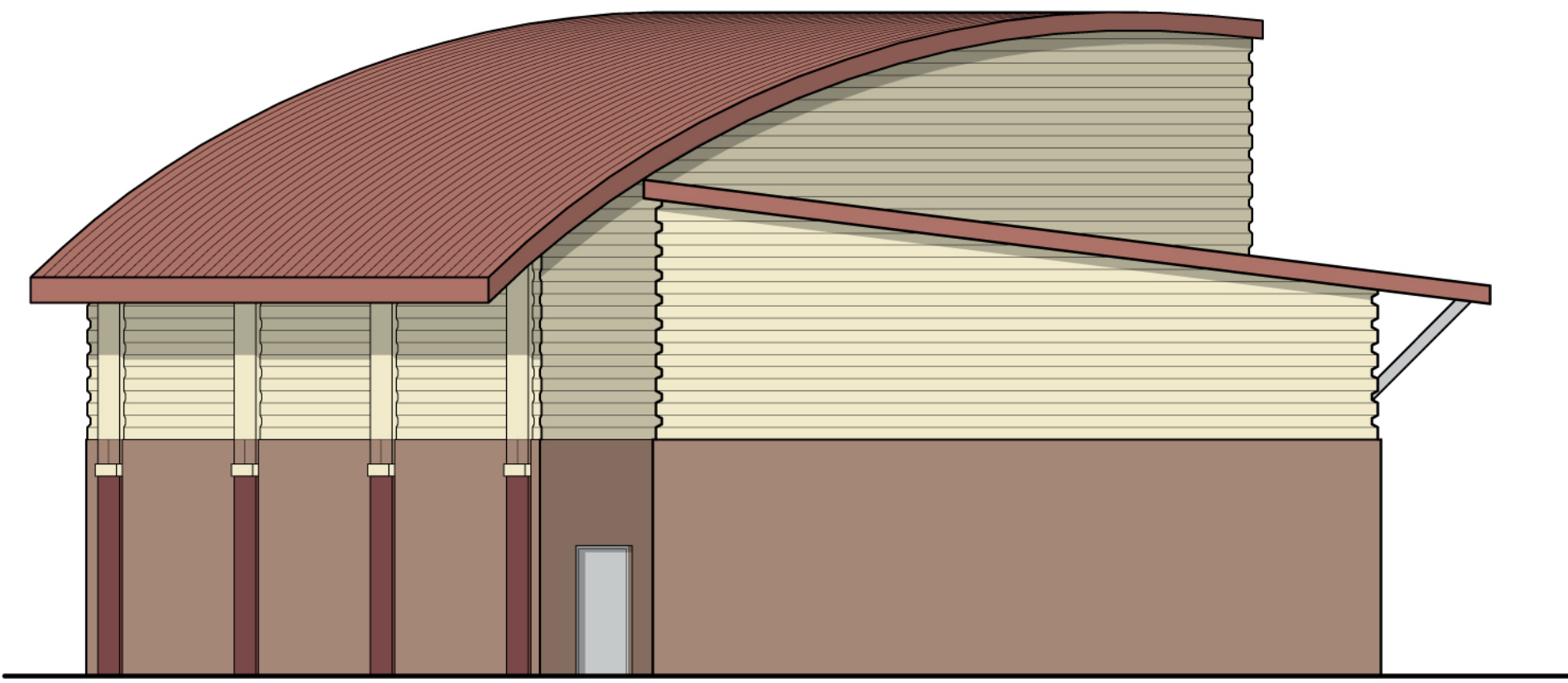


TRAFFIC ENGINEERING WAREHOUSE BUILDING	
SITE PLAN	
CLIENT NO. 13035-20	DATE: 02/01/2008
JOB NO. 07001	DESIGNED: <u>YM</u>
SCALE 1" = 40'	DRAWN: <u>YM</u>
SHEET NO. C-011	CHECKED: <u>RLG</u>
	APPR.: <u>RLG</u>

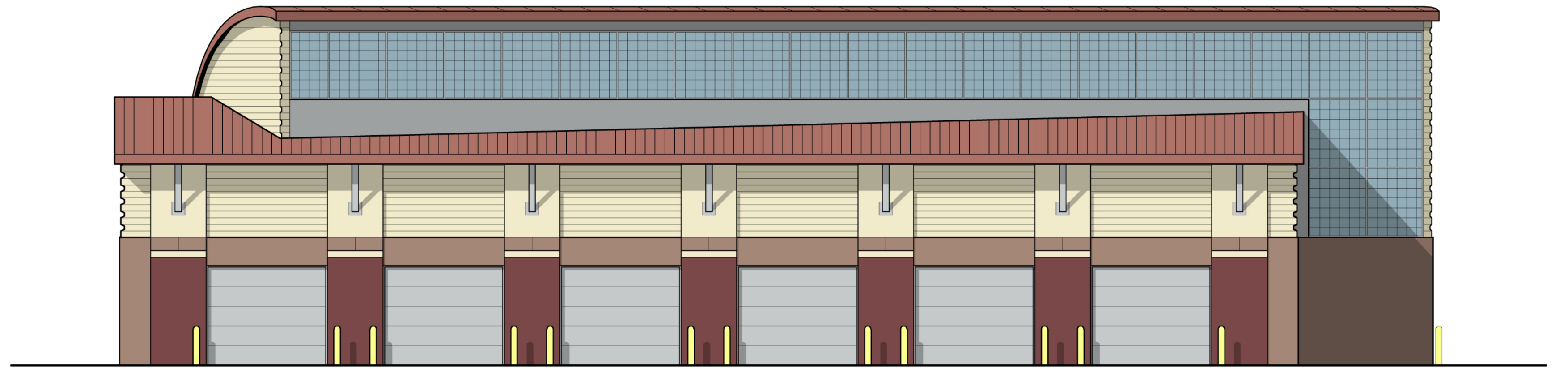
NO.	DATE	REVISION	INITIAL



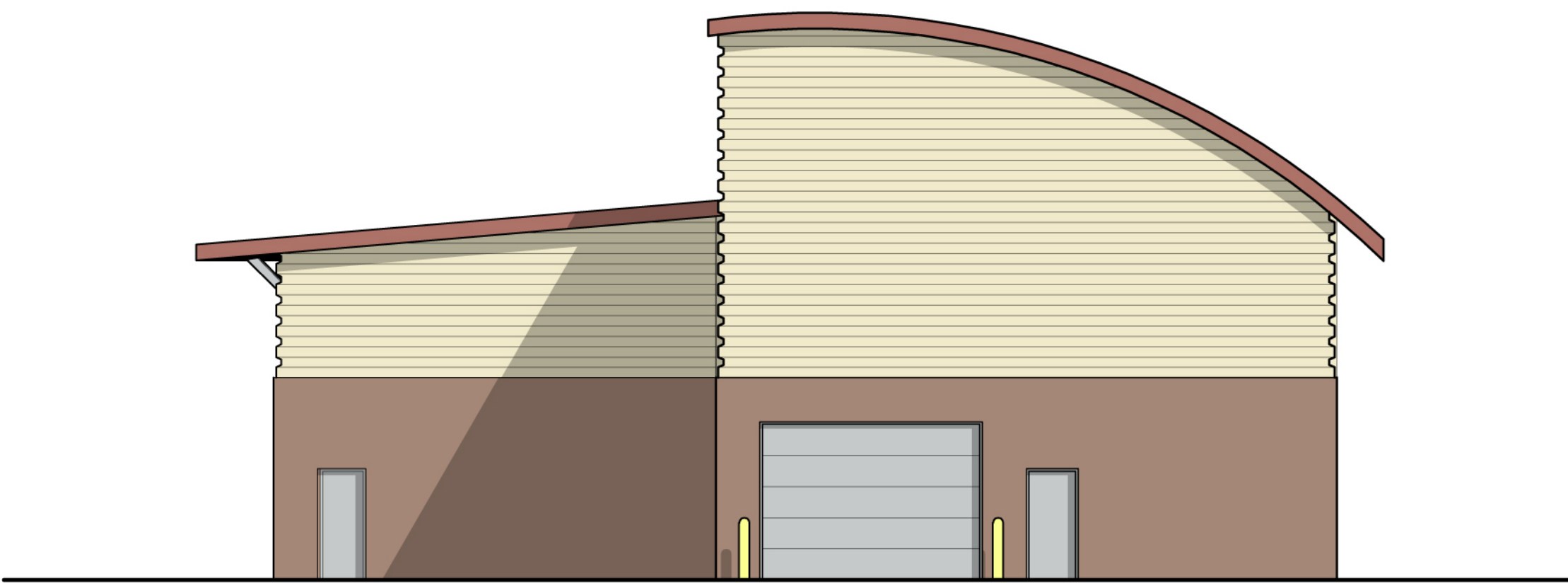
ENGINEERS
ARCHITECTS
SCIENTISTS
PLANNERS



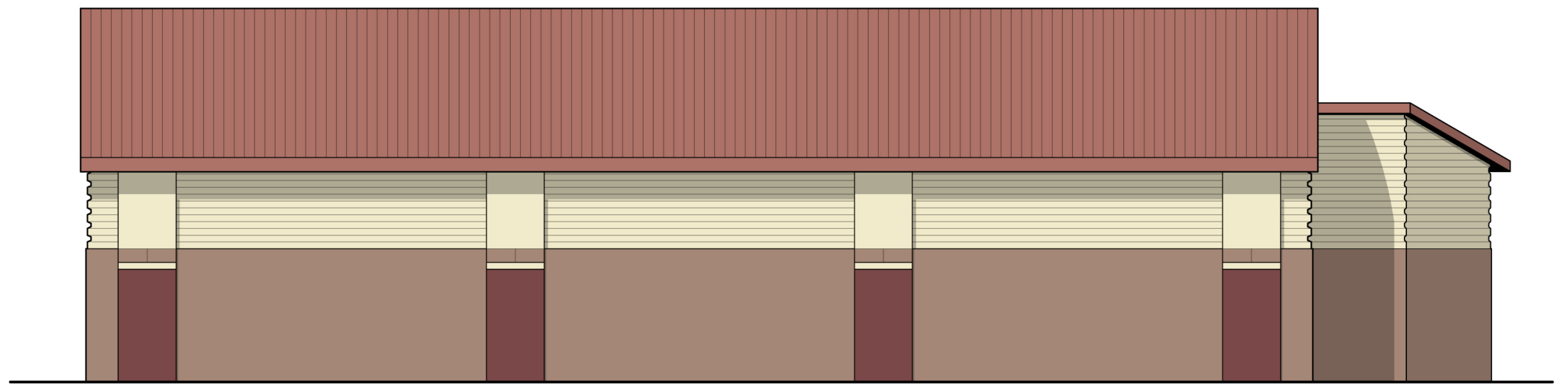
West Elevation



North Elevation



East Elevation



South Elevation