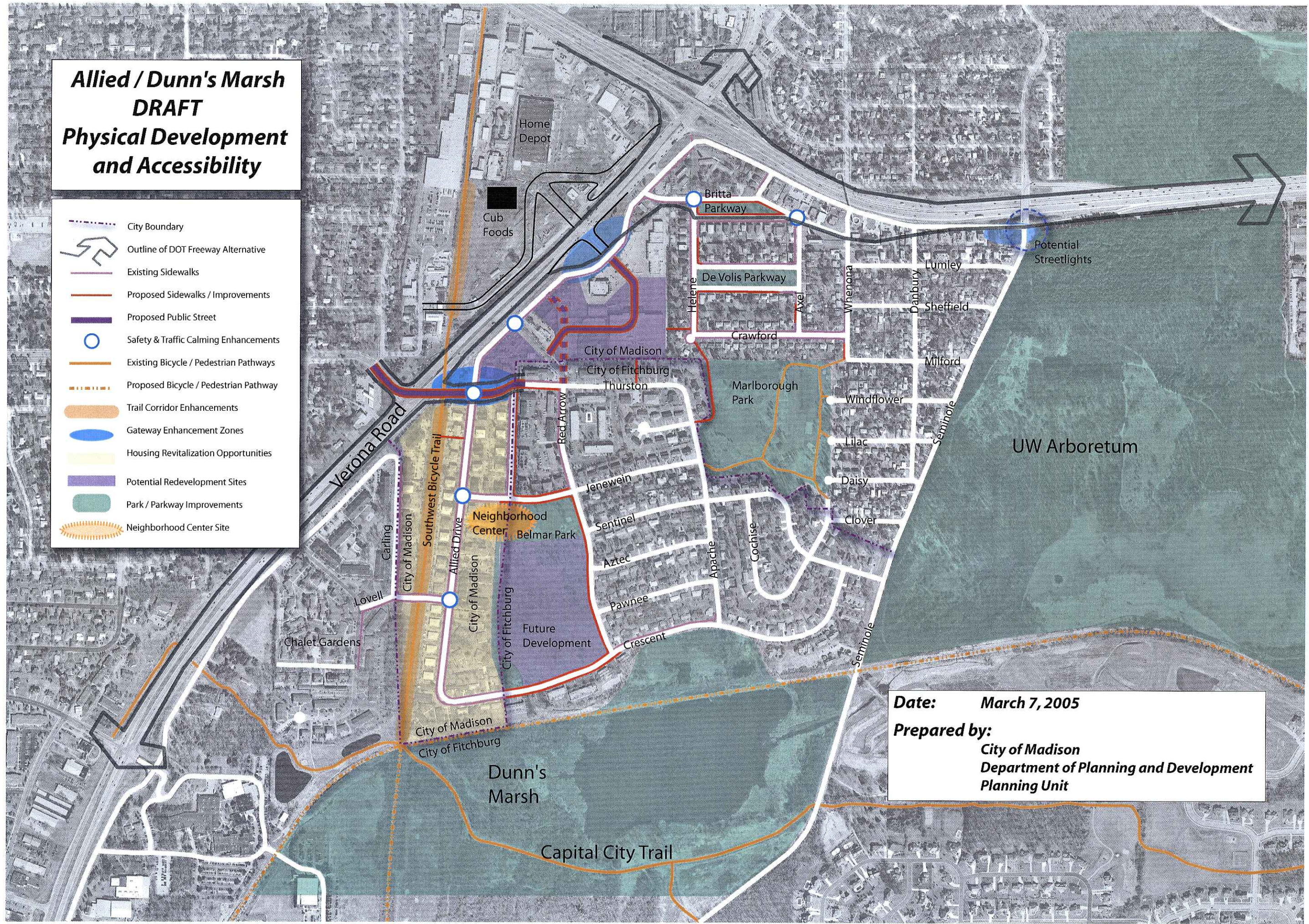


**Allied / Dunn's Marsh
DRAFT
Physical Development
and Accessibility**

-  City Boundary
-  Outline of DOT Freeway Alternative
-  Existing Sidewalks
-  Proposed Sidewalks / Improvements
-  Proposed Public Street
-  Safety & Traffic Calming Enhancements
-  Existing Bicycle / Pedestrian Pathways
-  Proposed Bicycle / Pedestrian Pathway
-  Trail Corridor Enhancements
-  Gateway Enhancement Zones
-  Housing Revitalization Opportunities
-  Potential Redevelopment Sites
-  Park / Parkway Improvements
-  Neighborhood Center Site



Date: March 7, 2005
Prepared by:
 City of Madison
 Department of Planning and Development
 Planning Unit