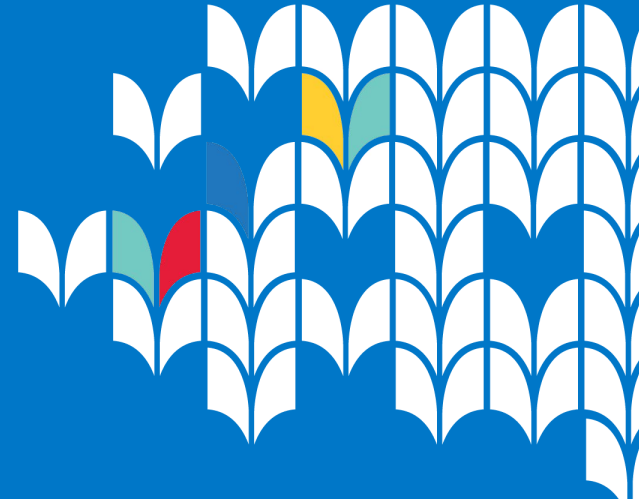


Welcome



Dr. Joe Gothard
Superintendent

Cindy Green
Assistant Superintendent,
Strategy and Innovation



MMSD by the Numbers:

52
Schools

- 4 Comprehensive high schools
- 4 Alternative high schools
- 12 Middle schools
- 32 Elementary schools

7,095
Staff

- 18% Teachers of color
- 30% Staff of color

5,000
Volunteers

200+
Partnerships

25,003
Students

2nd Largest in Wisconsin

Asian 7%



Black or African American 18%



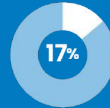
Hispanic 26%



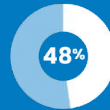
White 39%



Two or more races 10%



**Students Receiving
Special Education
Services**



**Economically
Disadvantaged**



English Learners

117

**Languages
Spoken**

- 21 Schools offer dual-language immersion
- 2 Schools offer Hmong Bilingual Program

Building *for the* **Future**



Building *for the* **Future**

**Boundary
Review**

**Enrollment
Strategy**

**Long Range
Facilities
Planning**

Why This, Why Now?

Madison's expected growth of 100,000 people by 2050 and the City of Madison: "Housing Forward" plan, which aims to add 15,000 new housing units by 2030.





100,000
New Neighbors
by 2050

Building for the Future Plan will:

- Assess current school attendance areas and MMSD's district boundary.
- Establish attendance areas where development is occurring in areas near land owned by MMSD.
- Evaluate current programs and options.
- Understand what our families value for their child's educational experience.



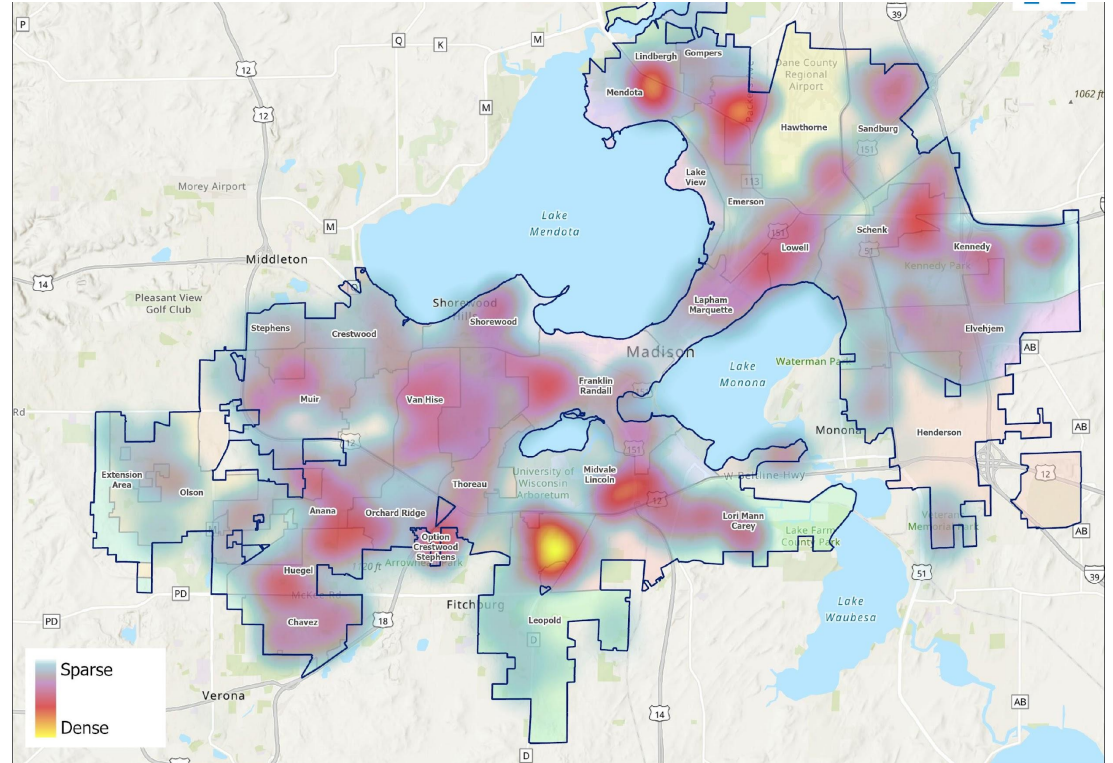


Data Factors



Student Density Fall 2025

Yellow areas indicate higher student concentration, while blue areas indicate lower concentration.





Capacity and Utilization

Current & Projected Resident Utilization Rates

(based on current Attendance Areas)

	Target Capacity	Current Utilization	Projected 2030 Utilization	Projected 2035 Utilization
Anana*	525	79%	78%	76%
Chavez*	651	80%	80%	77%
Crestwood	441	66%	66%	67%
Elvehjem	546	78%	74%	73%
Emerson	458	68%	60%	58%
Franklin/Randall	798	83%	84%	82%
Gompers	315	59%	55%	54%
Hawthorne	458	78%	76%	75%
Henderson	494	68%	63%	62%
Huegel	458	106%	100%	97%
Kennedy	531	130%	122%	120%
Lake View	329	100%	108%	102%
Lapham/Marquette	709	55%	57%	54%
Leopold	769	76%	69%	69%
Lindbergh	238	67%	54%	53%
Lori Mann Carey	384	143%	118%	116%
Lowell	458	67%	58%	57%
Mendota	366	89%	87%	86%
Midvale/Lincoln	1,073	65%	63%	62%
Muir	458	95%	91%	88%
Olson	651	77%	82%	80%
Orchard Ridge*	390	65%	63%	60%
Sandburg	458	73%	66%	65%
Schenk	421	114%	119%	117%
Shorewood	420	83%	90%	89%
Stephens	546	56%	51%	53%
Thoreau	439	112%	105%	104%
Van Hise	357	121%	98%	96%
Sprecher**	450			

Utilization Rate
(# of Residents / Capacity)

- No Utilization Rate
- 65%-74%
- 75%-84%
- 85%-94%
- 95%+
- <65%

*Referendum 24 schools with updated capacities

**Potential School Site

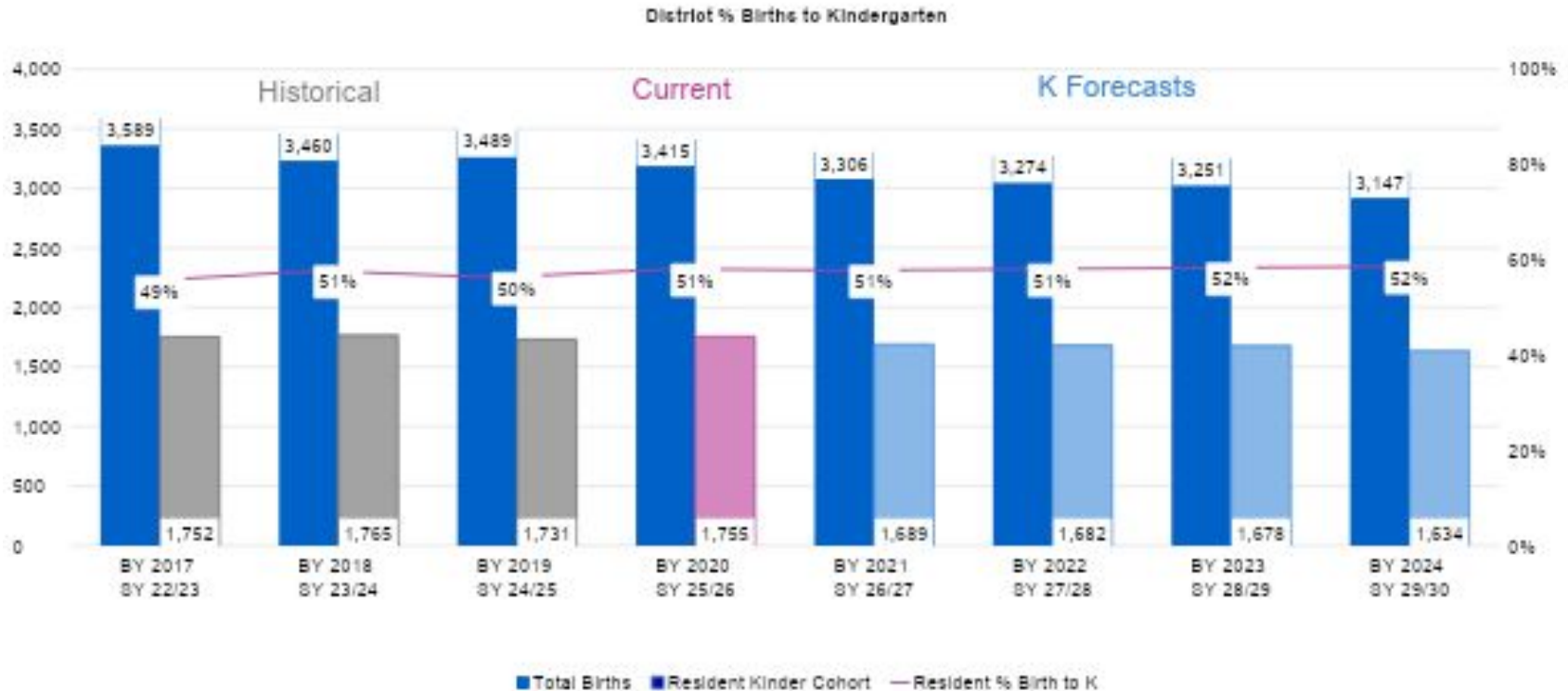
of Schools <65%

3

9

10

Birth Rate Analysis



Student Yield Factors Used in Study

Student Yield Factors (SYF) help determine the forecasted number of students from new residential developments. For single-family detached homes, the K-12 SYF is 0.203, which means MMSD could expect to gain 20 students for every 100 new single-family detached homes.

Student Yields from Current Housing

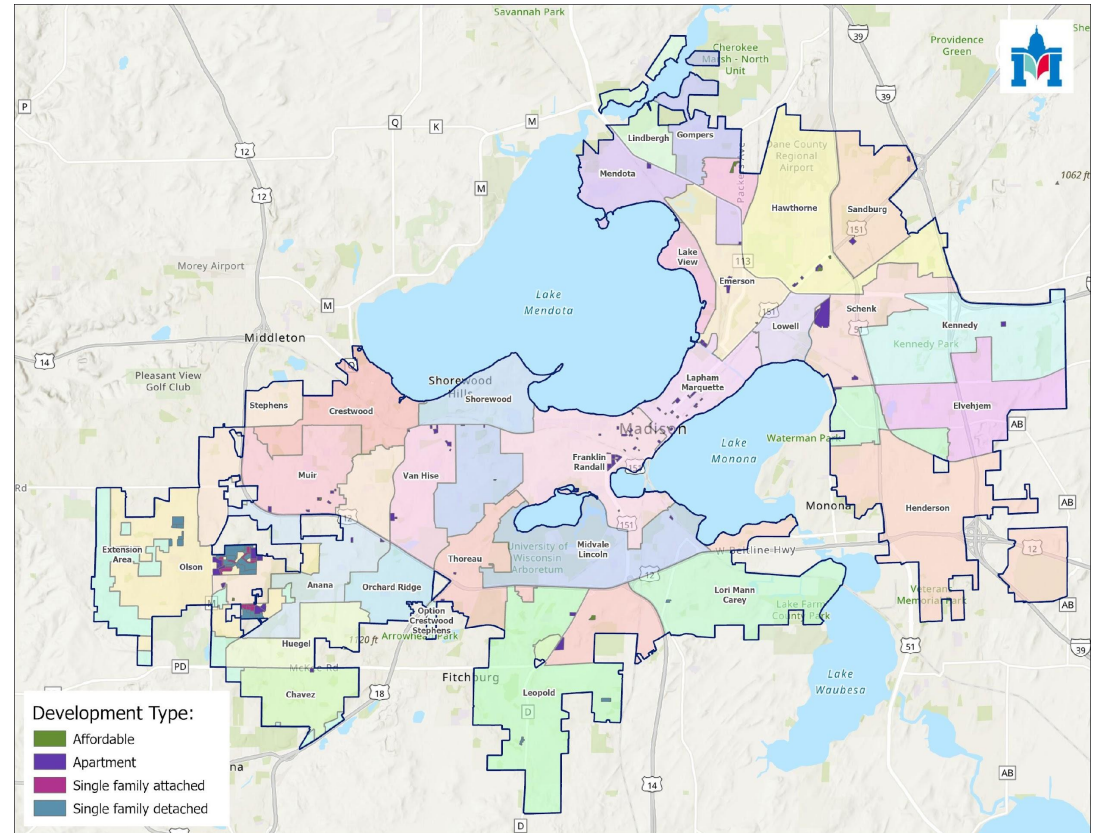
	Single-family detached (SFD)	Single-family attached (SFA)	Apartments (APT)	Affordable (AFD)
K-5	0.135	0.055	0.007	0.181
6-8	0.032	0.015	0.002	0.098
9-12	0.036	0.055	0.003	0.106
Total	0.203	0.125	0.012	0.385





Residential Developments

- 120 projects are currently active or planned.
- 12,214 units are included in the forecast.
- 24% of new housing will be in Franklin Randall ES.
- 81% of the units are apartments.





Draft Scenario Options by Region

Far West Region

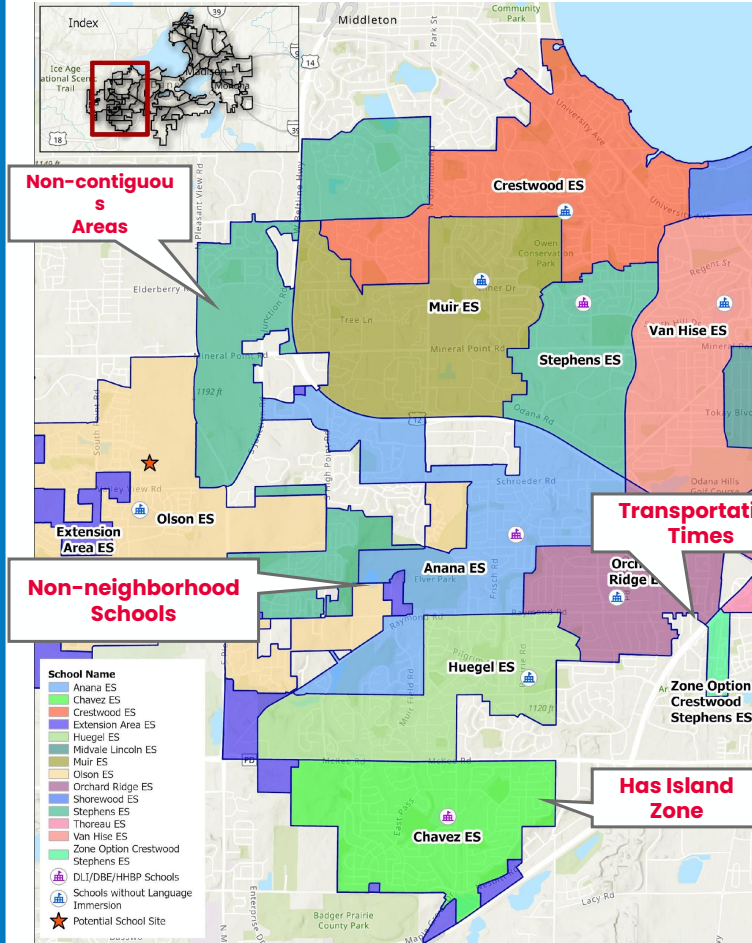
Change Areas Q, T, S, R rezones non-contiguous areas of Stephens to neighborhood schools.

Change Area O rezones non-contiguous Olson to Anana.

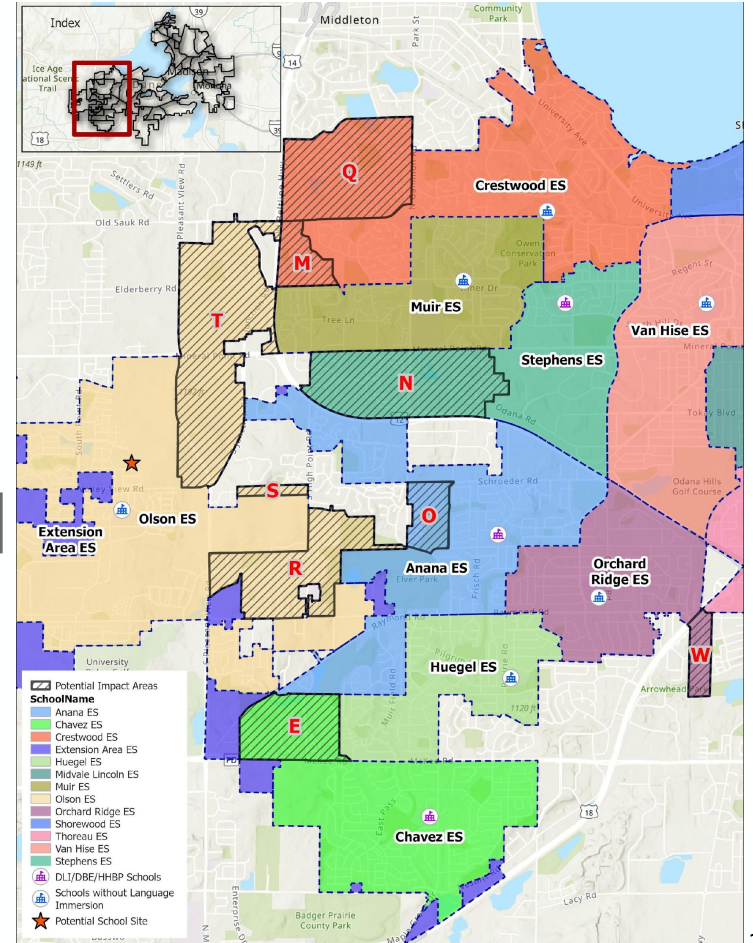
Change Area W rezones the Allied community to neighborhood school Orchard Ridge.

Change Areas N, M, and E rezoned to balance utilization.

Current Boundary



Draft Scenario Boundary



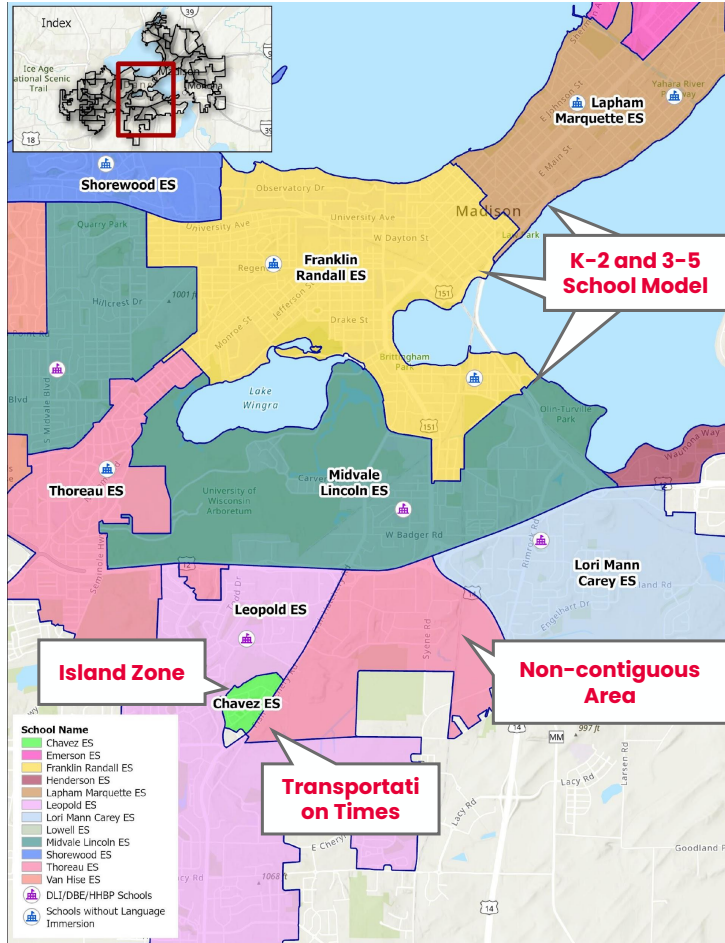
Near West Region

Change Area V creates clean boundaries without disrupting MS/HS feeder patterns.

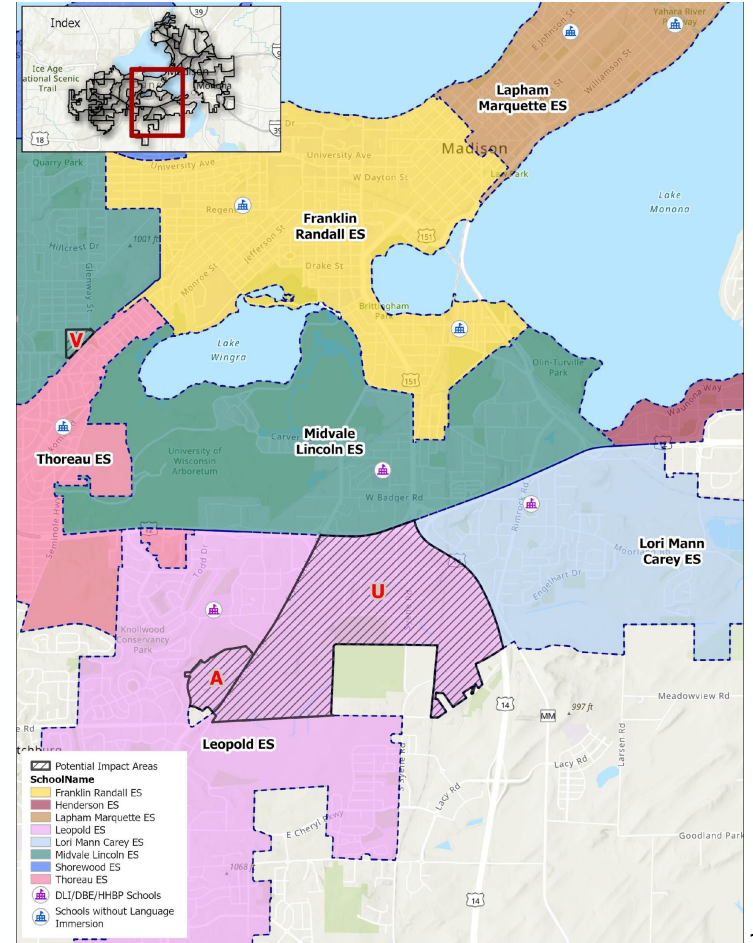
Change Area A rezones island zone of Chavez to Leopold.

Change Area U rezones non-contiguous Thoreau to neighborhood school Leopold.

Current Boundary



Draft Scenario Boundary



North Region

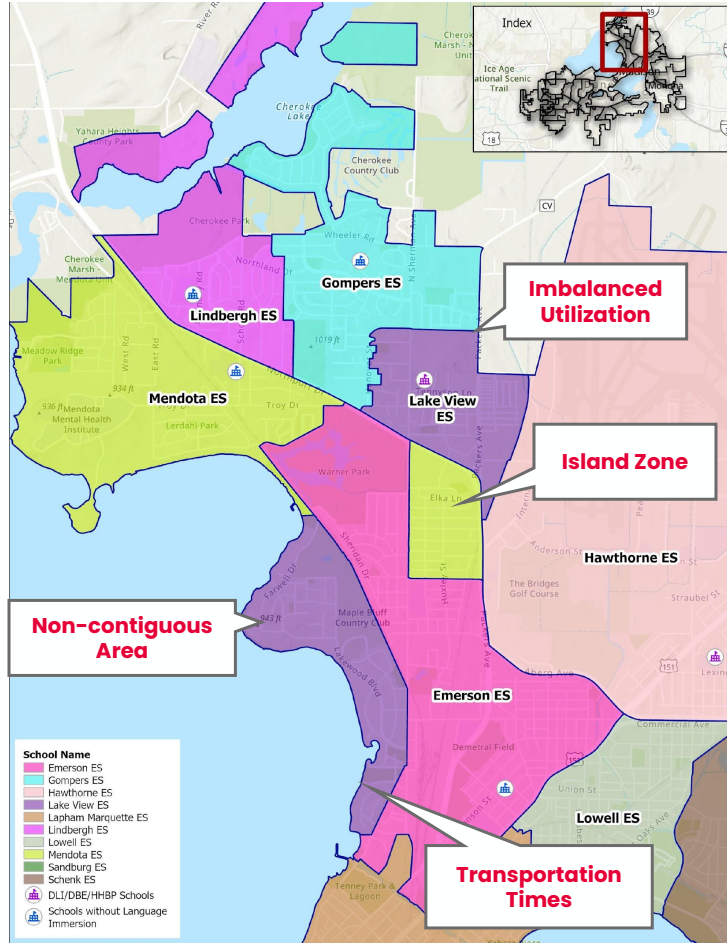
Change Areas L and G rezone non-contiguous areas to improve transportation.

Change Area C zoned to Mendota to balance utilization.

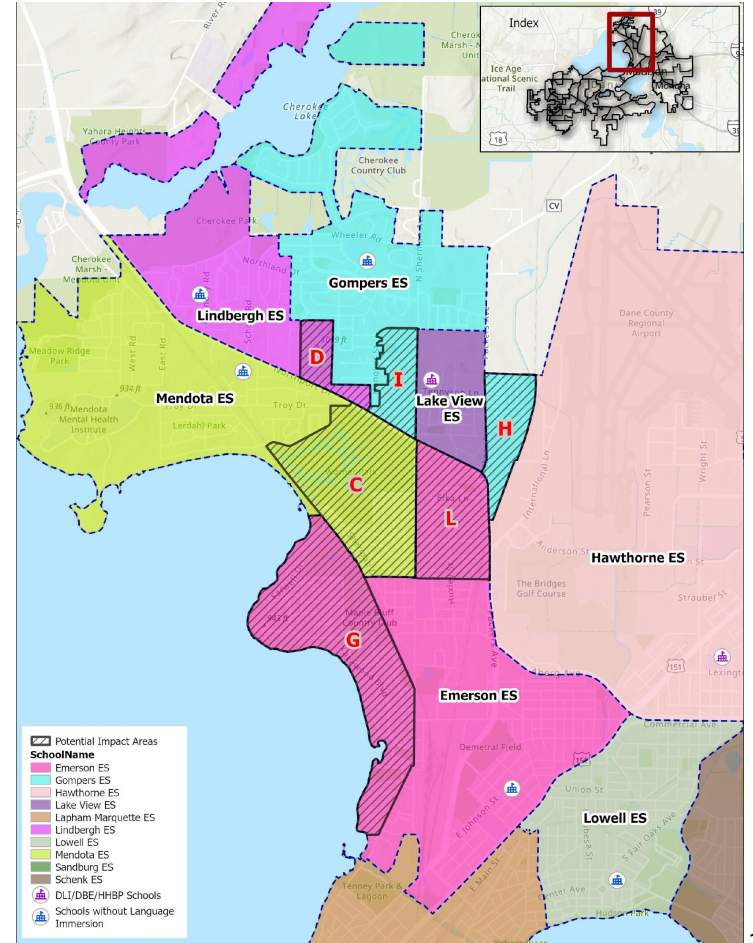
Change Areas I and H zoned to Gompers to relieve capacity pressure at Lake View.

Change Area D balances utilization between Lindberg and Gompers.

Current Boundary



Draft Scenario Boundary



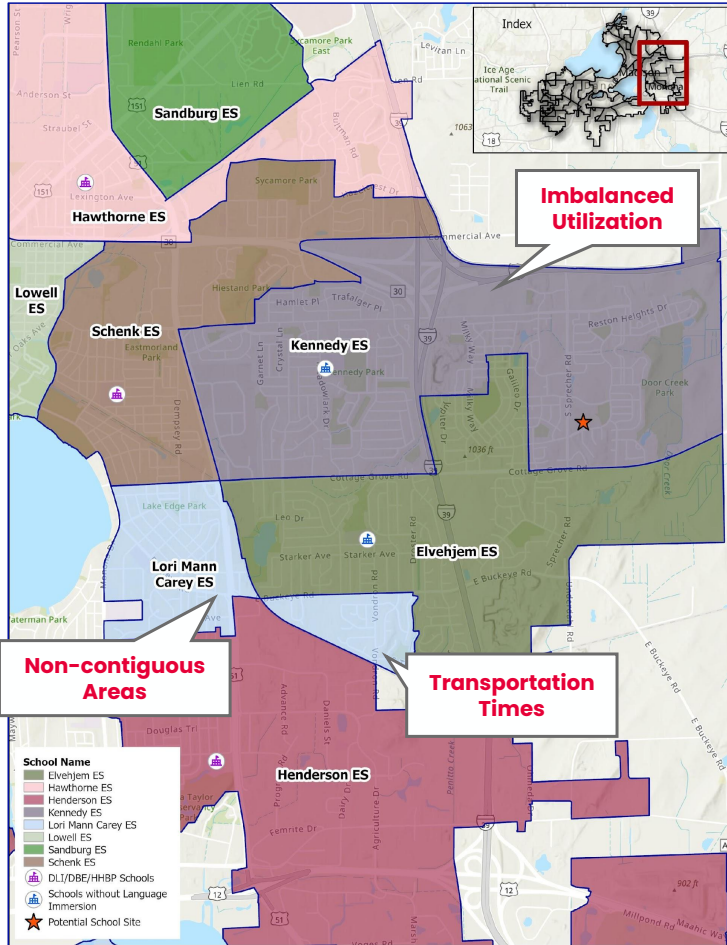
Far East Region – With Sprecher

Change Areas B and F are rezoned to the potential Sprecher ES attendance area to balance utilization.

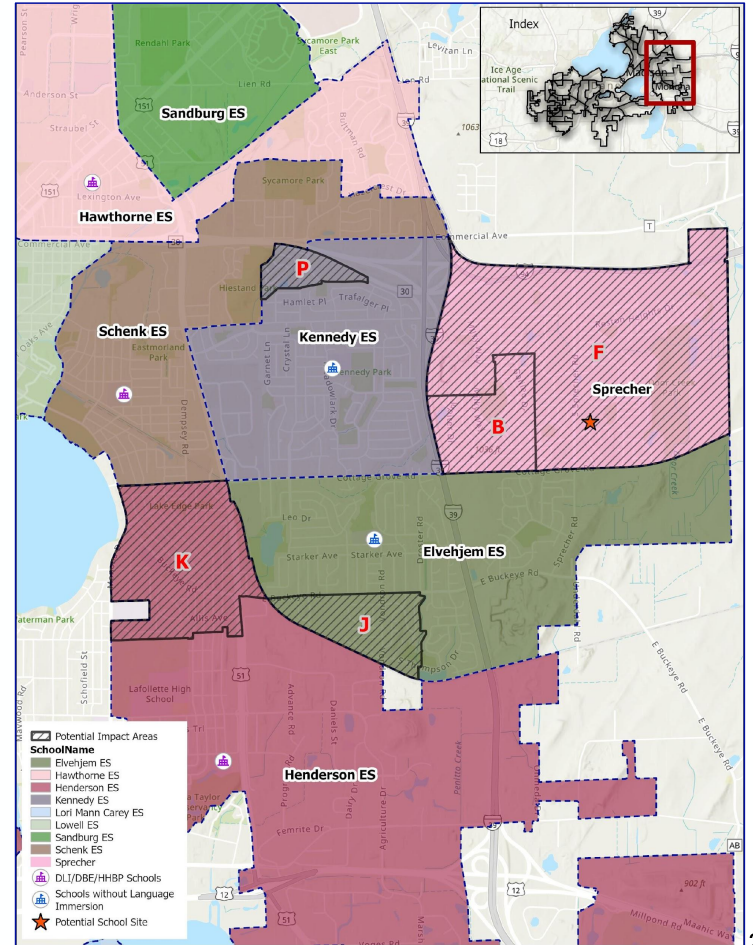
Change Areas K and J rezone non-contiguous areas of Lori Mann Carey ES to neighborhood schools.

Change Area P aligns with transportation and balances utilization.

Current Boundary



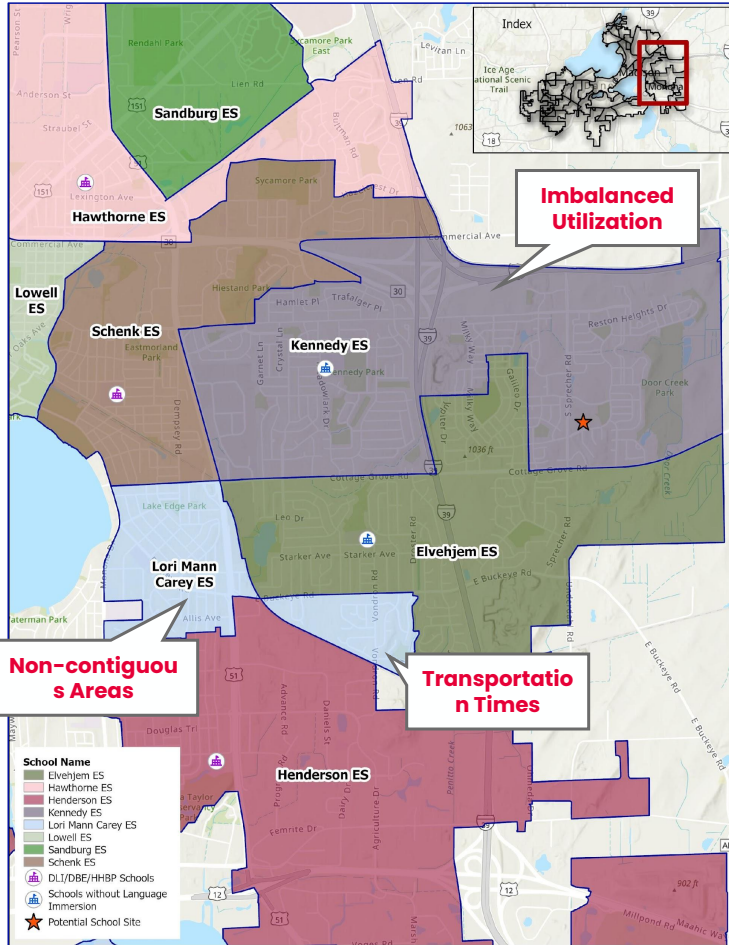
Draft Scenario Boundary



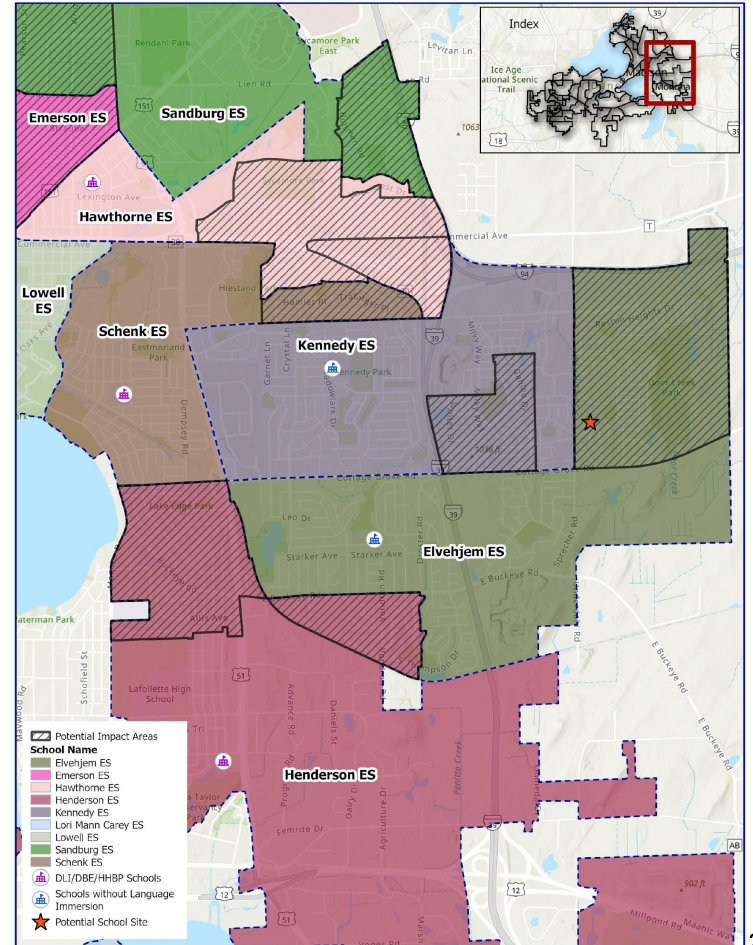
Far East Region – Without Sprecher

Without Sprecher ES, changes would likely need to be made to Kennedy, Schenk, Hawthorne, and Elvehjem Elementary Schools to balance utilization.

Current Boundary



Draft Scenario Boundary



Capacity and Utilization: Current and Draft Scenario



	Target Capacity	Using Current Attendance Areas			Using Attendance Areas from Scenario Planning		
		Current Utilization	Projected 2030 Utilization	Projected 2035 Utilization	Current Utilization	Projected 2030 Utilization	Projected 2035 Utilization
Anana*	525	79%	78%	76%	96%	89%	88%
Chavez*	651	80%	80%	77%	75%	75%	73%
Crestwood	441	66%	66%	67%	93%	89%	90%
Elvehjem	546	78%	74%	73%	67%	71%	69%
Emerson	458	68%	60%	58%	80%	78%	75%
Franklin/Randall	798	83%	84%	82%	83%	84%	82%
Gompers	315	59%	55%	54%	91%	94%	90%
Hawthorne	458	78%	76%	75%	78%	76%	75%
Henderson	494	68%	63%	62%	88%	77%	76%
Huegel	458	106%	100%	97%	94%	89%	86%
Kennedy	531	130%	122%	120%	83%	83%	82%
Lake View	329	100%	108%	102%	54%	61%	58%
Lapham/Marquette	709	55%	57%	54%	55%	57%	54%
Leopold	769	76%	69%	69%	99%	91%	90%
Lindbergh	238	67%	54%	53%	85%	66%	65%
Lori Mann Carey	384	143%	118%	116%	106%	80%	79%
Lowell	458	67%	58%	57%	67%	58%	57%
Mendota	366	89%	87%	86%	77%	65%	64%
Midvale/Lincoln	1,073	65%	63%	62%	66%	63%	62%
Muir	458	95%	91%	88%	78%	75%	74%
Olson	651	77%	82%	80%	82%	91%	97%
Orchard Ridge*	390	65%	63%	60%	94%	90%	86%
Sandburg	458	73%	66%	65%	73%	66%	65%
Schenk	421	114%	119%	117%	88%	90%	89%
Shorewood	420	83%	90%	89%	83%	90%	89%
Stephens	546	56%	51%	53%	25%	24%	23%
Thoreau	439	112%	105%	104%	90%	84%	83%
Van Hise	357	121%	98%	96%	121%	98%	96%
Sprecher**	450				103%	93%	91%
# of Schools <65%		3	9	10	3	5	6
# of Schools at 95%+		7	7	7	5	1	2

Building for the Future: Timeline

May 4–29, 2026

September 28–October 9 2026

December 1–18, 2026

February 2027

Phase 1
Community
Input

Phase 2
Community
Input

Phase 3
Community
Input

**Final Boundary
Option**

Draft
Elementary
Scenarios

Updated Draft
Scenarios to
include Middle
Schools

Refined
Scenarios

Final
recommendations

Board engagement
and vote





**Thank
You**

