

**Shopbop****1301 East Washington Avenue**

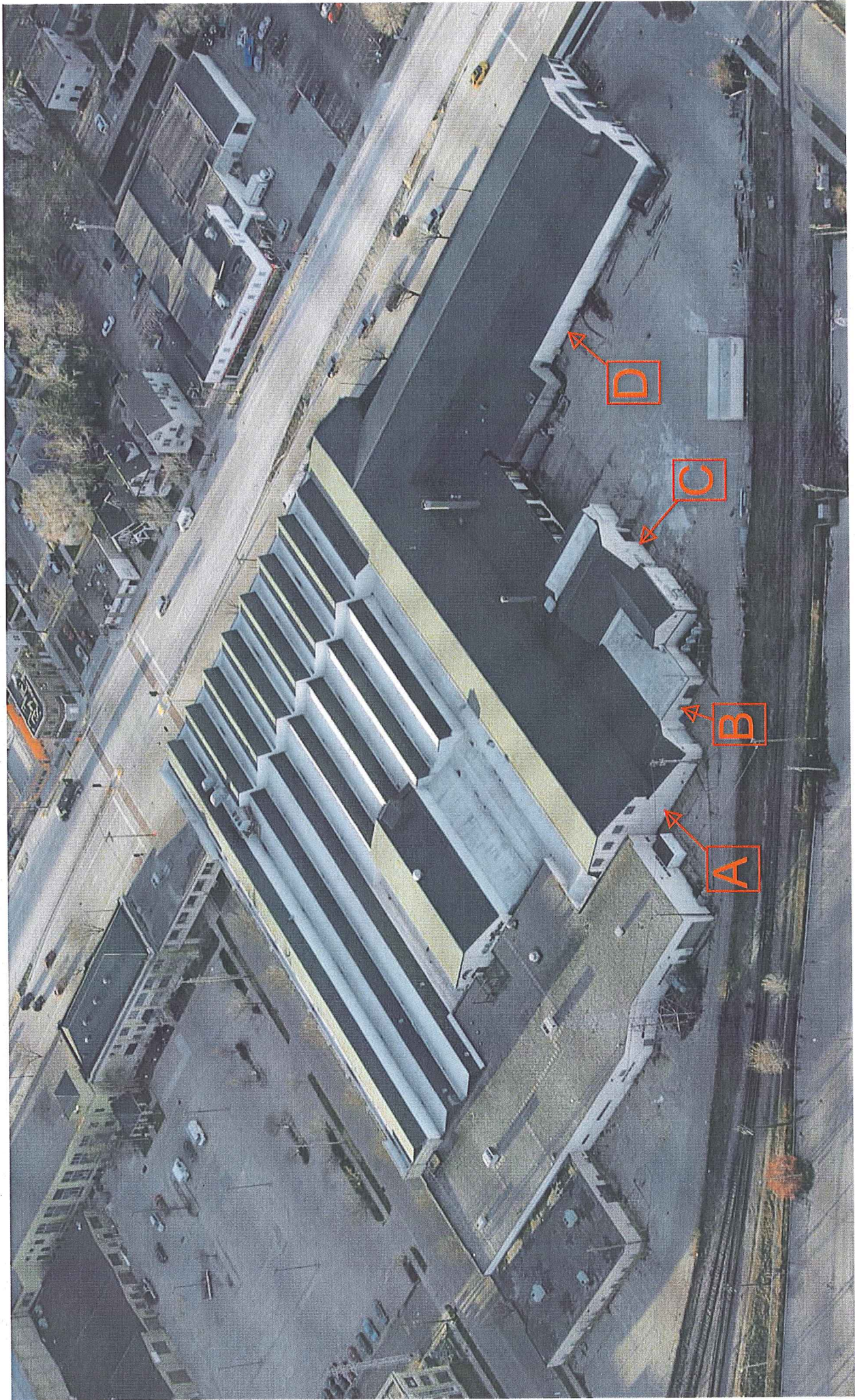
April 15, 2011

**Project Description**

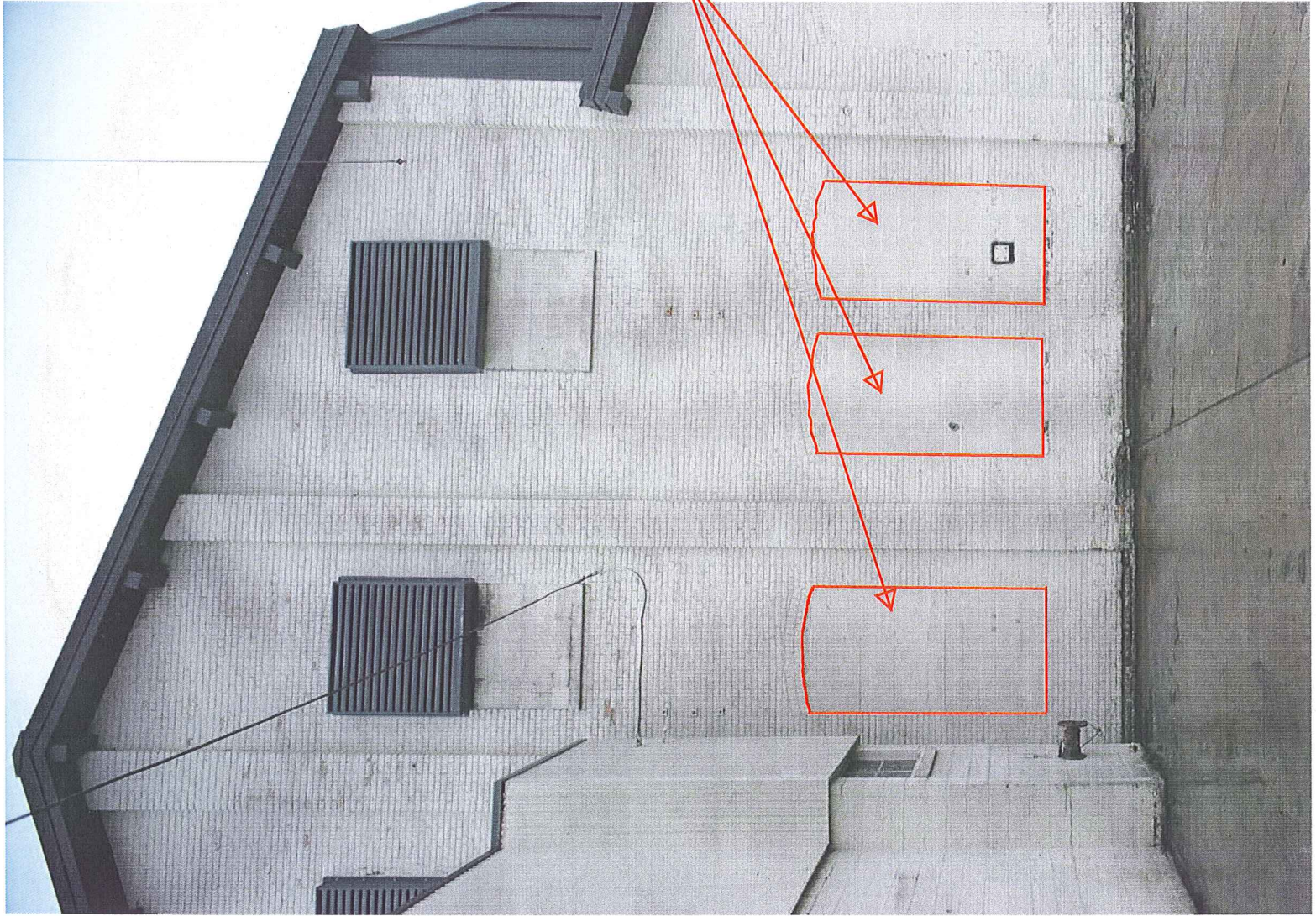
As work continues on the inside of the building, the tenant (Shopbop) is finding opportunities to add windows in several locations that work well with their interior operations. The locations are shown in the accompanying photographs. Please note that all proposed windows are in locations that appear to have been window openings in the original building. This is indicated by the shallow brick arches over each opening, with concrete block infill within.

The proposed windows are to be like those now in the building along East Washington Avenue as shown in Photo "E."

# Aerial Key Plan



A



New windows with 1  
inch frosted insulating  
glass in painted  
aluminum frames

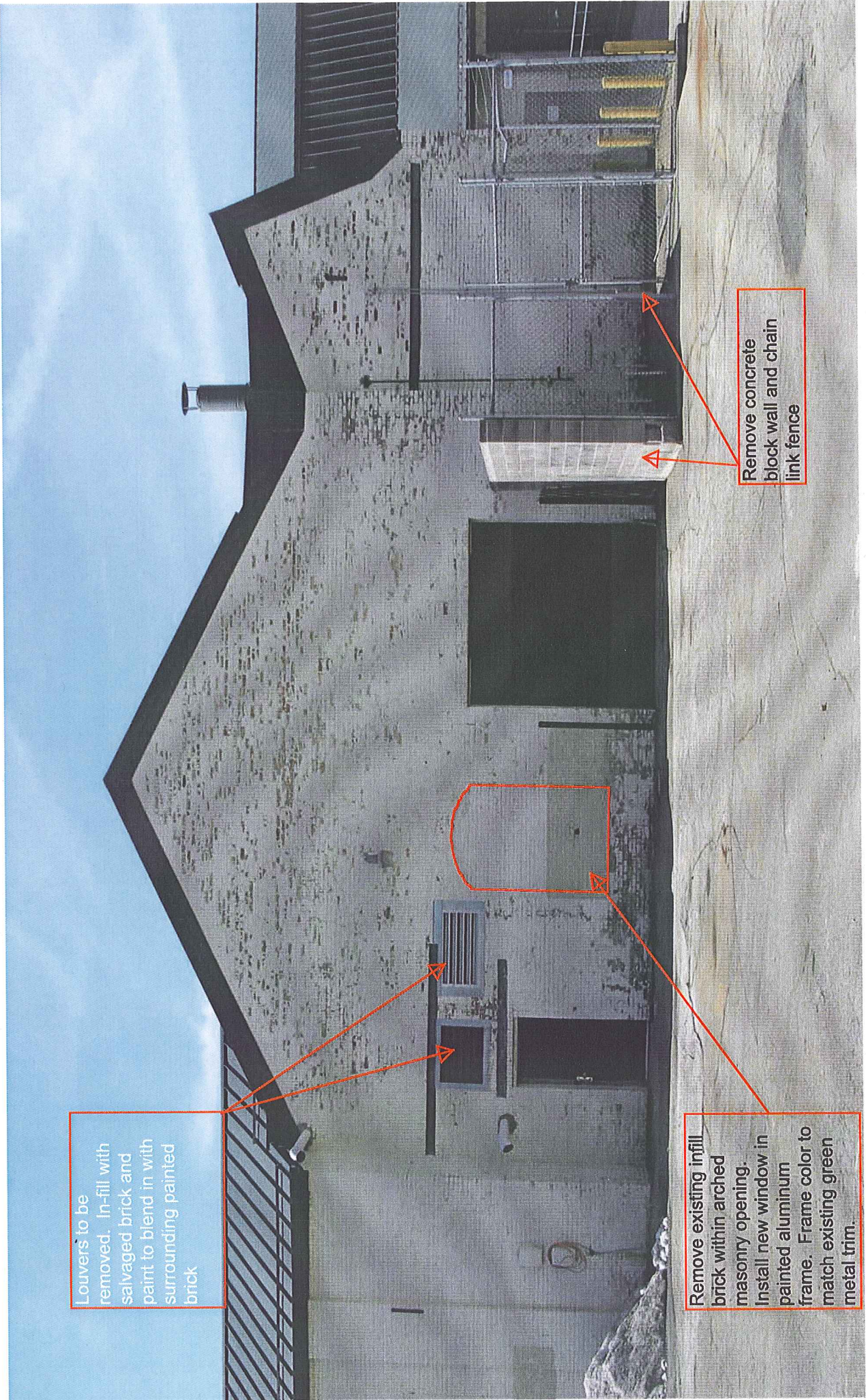
B

New window with 1" clear insulating glass and painted aluminum frame



April 15, 2011

C



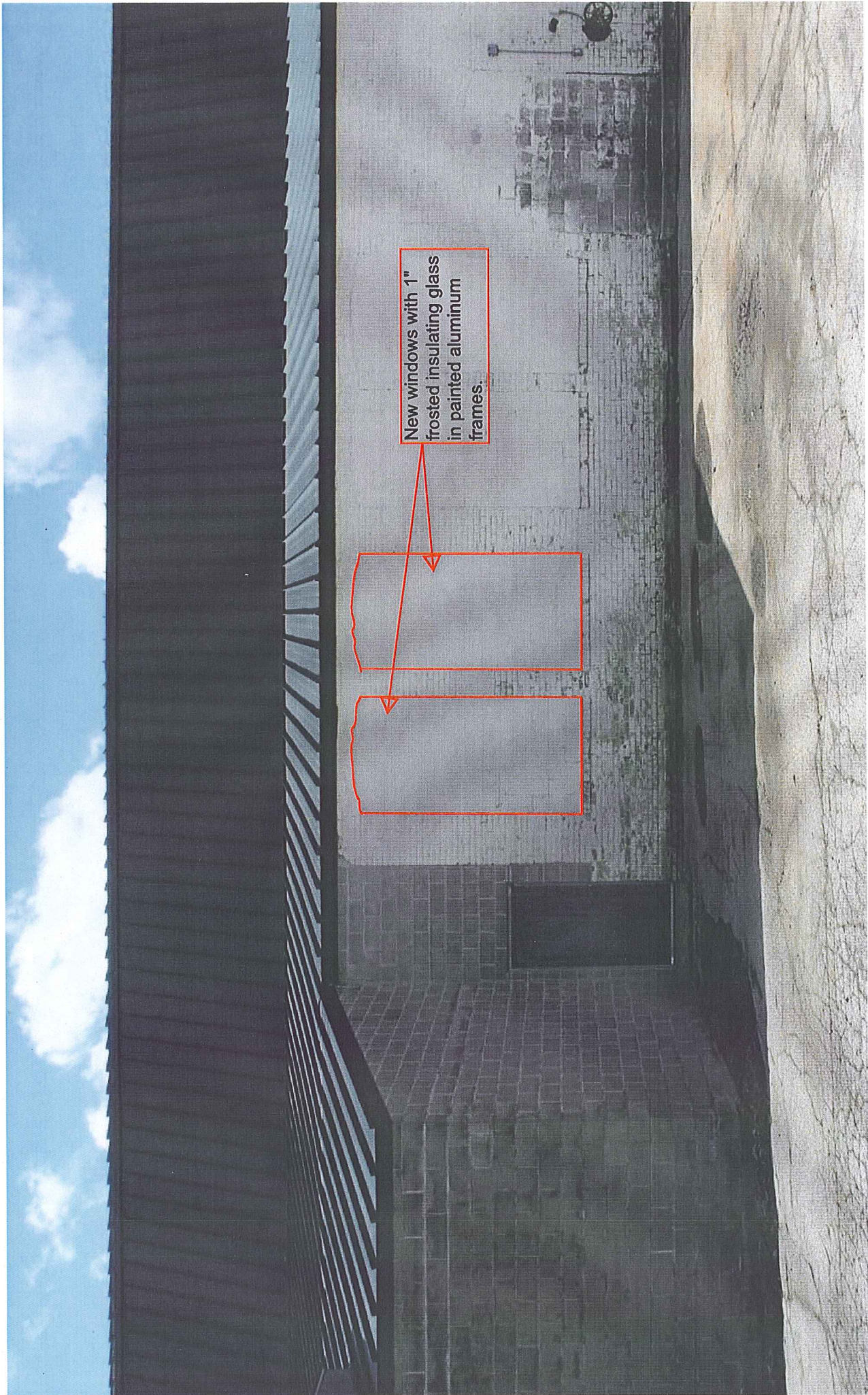
Louvers to be removed. In-fill with salvaged brick and paint to blend in with surrounding painted brick

Remove concrete block wall and chain link fence

Remove existing infill brick within arched masonry opening. Install new window in painted aluminum frame. Frame color to match existing green metal trim.

April 15, 2011

D



April 15, 2011

E

Example of existing window along East Washington Avenue showing design proposed for new window locations.



Aluminum frame follows arch; glass is straight across

Existing window in aluminum painted frame.