

K:\TWC_LDEV\Starbucks_FY22 Reno Program\80412 Madison, WI - Hwy 18 & Summit\3 Design\CAD\PlanSheets\C4-SITE PLAN.dwg November 22, 2023 - 9:58am

This document, together with the concepts and designs presented herein, is intended only for the specific purpose and client for which it was prepared. Reuse of and improper reliance on this document without written authorization and adaptation by Kimley-Horn and Associates, Inc. shall be without liability to Kimley-Horn and Associates, Inc.

PROPERTY SUMMARY	
TOTAL PROPERTY AREA	2.99 AC / 130,134 SF
DISTURBED AREA	0.24 AC / 10,405 SF
EXISTING IMPERVIOUS AREA	0.17 AC / 7,494 SF / 72.02%
EXISTING PERVIOUS AREA	0.07 AC / 2,911 SF / 27.98%
PROPOSED IMPERVIOUS AREA	0.18 AC / 7,817 SF / 75.13%
PROPOSED PERVIOUS AREA	0.06 AC / 2,588 SF / 24.87%
NET INCREASE IN IMPERVIOUS AREA	0.007 AC / 323 SF

SITE DATA	
EXISTING ZONING	PD: PLANNED DEVELOPMENT
PARKING SETBACKS	SIDE/REAR = 0' HIGHWAY = 30'
BUILDING SETBACKS	FRONT = -- SIDE = -- REAR = -- HIGHWAY 18 = 42'

BUILDING DATA	
TOTAL BUILDING AREA	1,635 SF
PERCENT OF TOTAL PROPERTY AREA	1.26%

PARKING SUMMARY	
REQUIRED PARKING	16 SPACES @ 15% CAPACITY
TOTAL PROPOSED PARKING	20 SPACES
REQUIRED ACCESSIBLE PARKING	1 VAN ACCESSIBLE
PROPOSED ACCESSIBLE PARKING	2 STANDARD SPACES 1 VAN ACCESSIBLE

- ### SITE PLAN NOTES
- REFER TO THE ARCHITECTURAL PLANS FOR EXACT LOCATIONS AND DIMENSIONS OF STOOPS, TRUCK DOCKS, TRASH ENCLOSURES & PRECISE BUILDING DIMENSIONS. REFER TO THE SITE ELECTRICAL PLAN FOR LOCATIONS OF PROPOSED LIGHT POLES, CONDUITS, AND ELECTRICAL EQUIPMENT.
 - REFER TO CERTIFIED SITE SURVEY OR PLAT FOR EXACT LOCATION OF EXISTING EASEMENTS, PROPERTY BOUNDARY DIMENSIONS, AND ADJACENT RIGHT-OF-WAY & PARCEL INFORMATION.
 - DIMENSIONS AND RADII ARE DRAWN TO THE FACE OF CURB, UNLESS OTHERWISE NOTED. DIMENSIONS ARE ROUNDED TO THE NEAREST TENTH FOOT, AND AREAS ARE ROUNDED TO THE NEAREST SQUARE FOOT.
 - UNLESS OTHERWISE NOTED, THE CONTRACTOR SHALL BE RESPONSIBLE FOR RELOCATING EXISTING SITE IMPROVEMENTS THAT CONFLICT WITH THE PROPOSED WORK, INCLUDING BUT NOT LIMITED TO TRAFFIC SIGNS, LIGHT POLES, ABOVEGROUND UTILITIES, ETC. PERFORM WORK IN ACCORDANCE WITH GOVERNING AUTHORITIES REQUIREMENTS AND PROJECT SITE WORK SPECIFICATIONS. COST SHALL BE INCLUDED IN BASE BID.
 - TYPICAL PARKING STALL DIMENSIONS SHALL BE 9.0- FEET IN WIDTH AND 20- FEET IN LENGTH UNLESS OTHERWISE INDICATED.
 - MONUMENT SIGN(S) ARE DETAILED ON THE ARCHITECTURAL PLANS AND ARE SHOWN FOR GRAPHICAL & INFORMATIONAL PURPOSES ONLY. CONTRACTOR TO VERIFY SIGN DIMENSIONS, LOCATION AND REQUIRED PERMITS WITH THE OWNER.

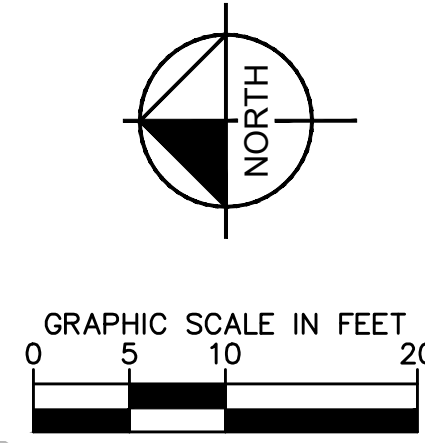
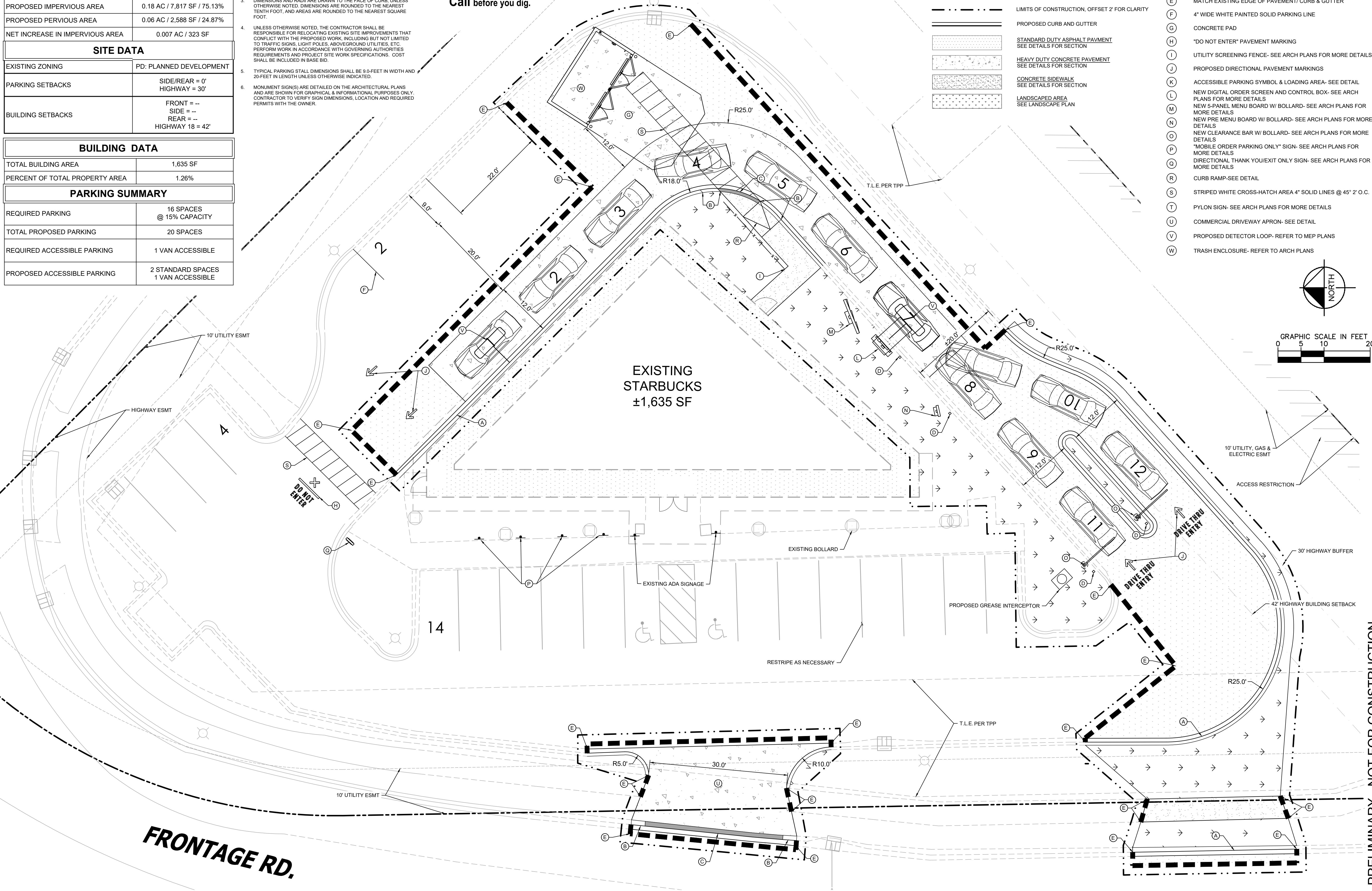


LEGEND

	PROPERTY LINE
	SETBACK LINE
	EASEMENT
	PROPOSED FENCE
	SAWCUT, MATCH EXISTING
	LIMITS OF CONSTRUCTION, OFFSET 2' FOR CLARITY
	PROPOSED CURB AND GUTTER
	STANDARD DUTY ASPHALT PAVMENT SEE DETAILS FOR SECTION
	HEAVY DUTY CONCRETE PAVEMENT SEE DETAILS FOR SECTION
	CONCRETE SIDEWALK SEE DETAILS FOR SECTION
	LANDSCAPED AREA SEE LANDSCAPE PLAN

KEYNOTE LEGEND

(A)	TYPE 'D' CONCRETE CURB & GUTTER, SEE DETAIL
(B)	CURB TAPER, SEE DETAIL
(C)	FLAT CURB, SEE DETAIL
(D)	6" BOLLARD, SEE ARCH PLANS FOR MORE DETAILS
(E)	MATCH EXISTING EDGE OF PAVEMENT CURB & GUTTER
(F)	4" WIDE WHITE PAINTED SOLID PARKING LINE
(G)	CONCRETE PAD
(H)	"DO NOT ENTER" PAVEMENT MARKING
(I)	UTILITY SCREENING FENCE- SEE ARCH PLANS FOR MORE DETAILS
(J)	PROPOSED DIRECTIONAL PAVEMENT MARKINGS
(K)	ACCESSIBLE PARKING SYMBOL & LOADING AREA- SEE DETAIL
(L)	NEW DIGITAL ORDER SCREEN AND CONTROL BOX- SEE ARCH PLANS FOR MORE DETAILS
(M)	NEW 5-PANEL MENU BOARD W/ BOLLARD- SEE ARCH PLANS FOR MORE DETAILS
(N)	NEW PRE MENU BOARD W/ BOLLARD- SEE ARCH PLANS FOR MORE DETAILS
(O)	NEW CLEARANCE BAR W/ BOLLARD- SEE ARCH PLANS FOR MORE DETAILS
(P)	"MOBILE ORDER PARKING ONLY" SIGN- SEE ARCH PLANS FOR MORE DETAILS
(Q)	DIRECTIONAL THANK YOU/EXIT ONLY SIGN- SEE ARCH PLANS FOR MORE DETAILS
(R)	CURB RAMP-SEE DETAIL
(S)	STRIPED WHITE CROSS-HATCH AREA 4" SOLID LINES @ 45' 2" O.C.
(T)	PYLON SIGN- SEE ARCH PLANS FOR MORE DETAILS
(U)	COMMERCIAL DRIVEWAY APRON- SEE DETAIL
(V)	PROPOSED DETECTOR LOOP- REFER TO MEP PLANS
(W)	TRASH ENCLOSURE- REFER TO ARCH PLANS



PRELIMINARY - NOT FOR CONSTRUCTION

STARBUCKS #80412- HWY 18 & SUMMIT

PREPARED FOR STARBUCKS

MADISON WI

SHEET NUMBER C300

SITE PLAN

DATE

REVISIONS

BY

KHA PROJECT 160421012

DATE XX/XX/XXXX

SCALE AS SHOWN

DESIGNED BY BSK

DRAWN BY BSK

CHECKED BY MTL

© 2023 KIMLEY-HORN AND ASSOCIATES, INC.

787 EUSTIS STREET, SUITE 100, ST. PAUL, MN 55114

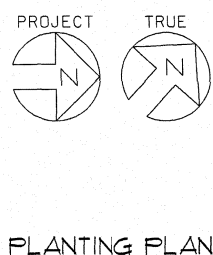
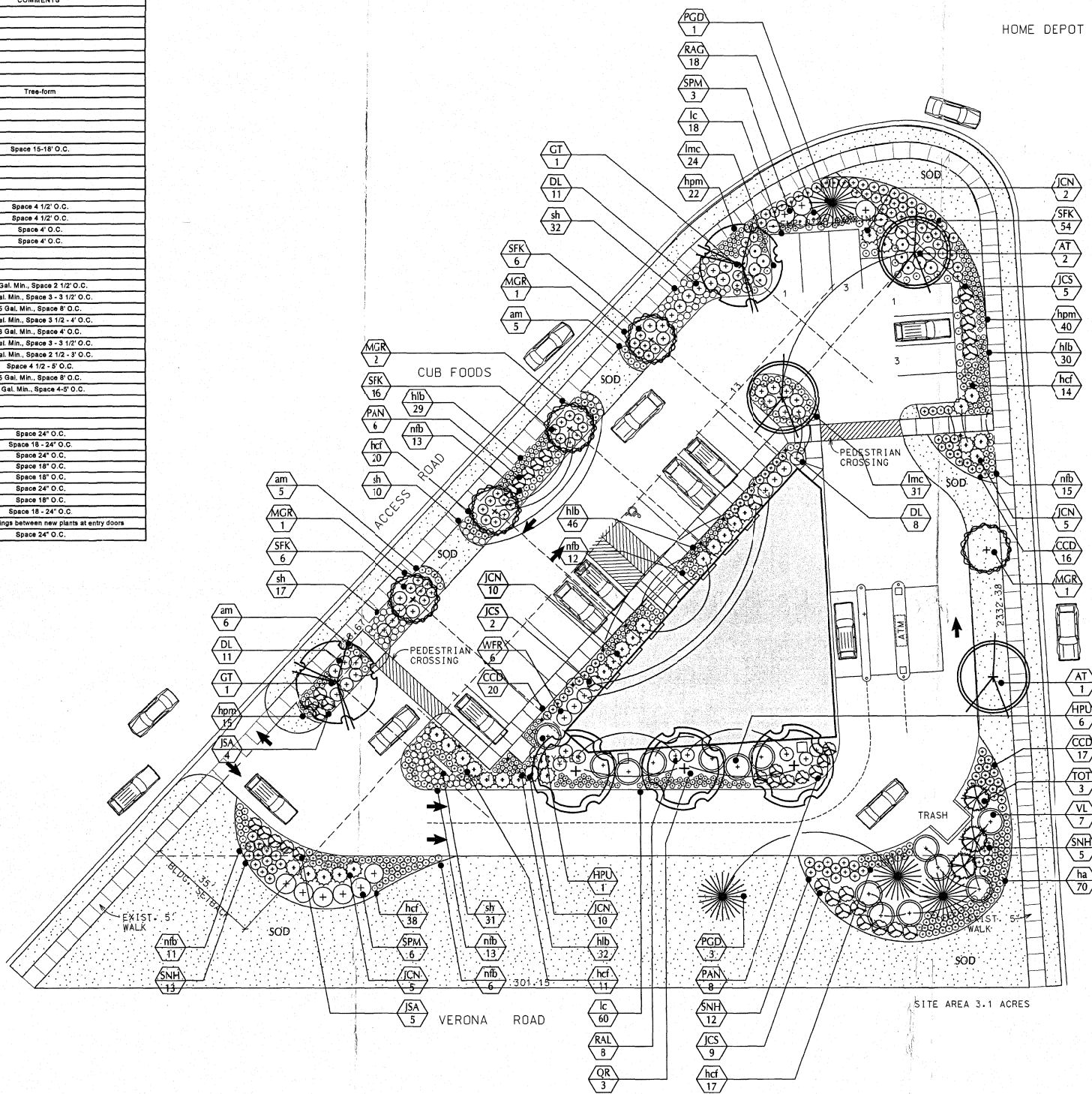
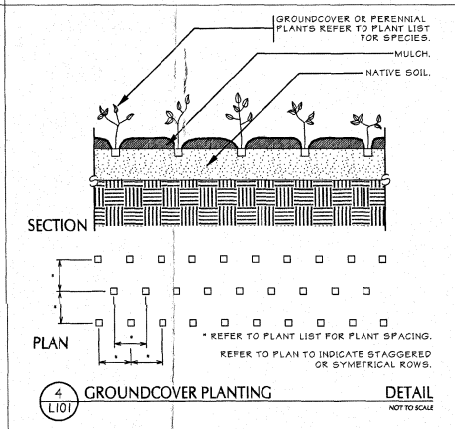
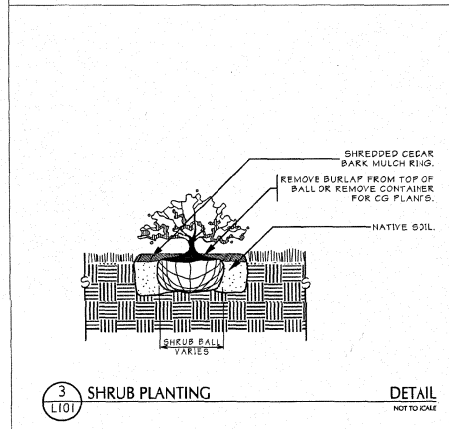
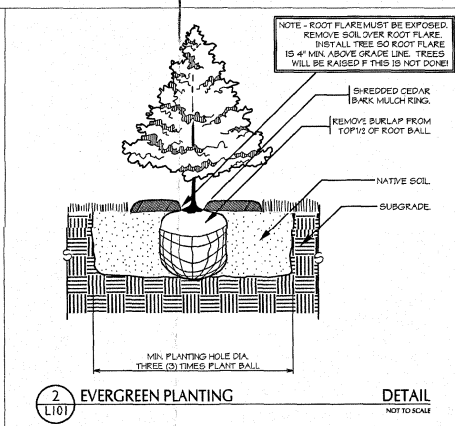
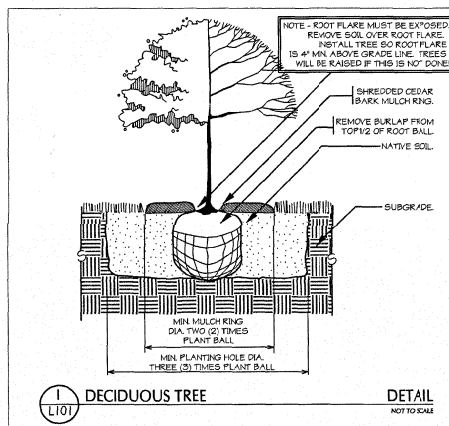
PHONE: 651-454-1197

WWW.KIMLEY-HORN.COM

Kimley-Horn

PLANT LIST

KEY	SCIENTIFIC NAME	COMMON NAME	PLANTING SIZE AT	ROOT COND.	QUANTITY	MATURITY SIZE AT	COMMENTS
TALL							
GROWING DECIDUOUS TREES							
GT	<i>Quercus macrocarpa</i> 'Impressa'	Impressa Honeylocust	2 1/2" Cal.	BB	2	30-35' ht. x 30-35" s.	
GR	<i>Quercus robur</i> 'Shademaster'	Shademaster English Oak	1 3/4" Cal.	BB	3	50' ht. x 25" s.	
ORNAMENTAL TREES							
AT	<i>Acer tataricum</i>	Tatarian Maple	2" Cal.	BB	3	20-25' ht. x 15-20" s.	Tree-form
MGR	<i>Malus transcorticata</i> 'Schmidtcutler'	Golden Randrops Crabapple	1 1/4" Cal.	BB	5	25' ht. x 25-30" s.	
CONIFER AND EVERGREEN TREES							
PGD	<i>Picea glauca</i> 'Dancea'	Black Hills Spruce	6"	BB	4	20-40' ht. x 15-25" s.	Space 15-18' O.C.
TOT	<i>Taxus occidentalis</i> 'Trautman'	Trautman Arborvitae	6"	BB	3	18-20' ht. x 8-10" s.	
EVERGREEN SHRUBS							
JCN	<i>Juniperus chinensis</i> 'Nicks Compact'	Nicks Compact Juniper	5 Gal.	Cont.	32	3' ht. x 6" s.	Space 4 1/2' O.C.
JCS	<i>Juniperus chinensis</i> 'Sea Green'	Sea Green Juniper	5 Gal.	Cont.	18	4-6' ht. x 6" s.	Space 4 1/2' O.C.
JSA	<i>Juniperus sabinus</i> 'Arcadia'	Arcadia Savin Juniper	3 Gal.	Cont.	9	1-1 1/2' ht. x 6" s.	Space 4' O.C.
PAN	<i>Picea abies</i> 'Nidiformis'	Bird's Nest Spruce	3 Gal.	Cont.	14	3' ht. x 3-4" s.	Space 4' O.C.
DECIDUOUS SHRUBS							
CCD	<i>Caryophylla x elatior</i> 'First Choice'	First Choice Shearwood	18" HL	CG	53	2' ht. x 2-3" s.	2 Gal. Min. Space 3 1/2' O.C.
DL	<i>Diervilla lonicera</i>	Dwarf Bush-honeysuckle	18" HL	CG	30	3-4" ht. x 3-4" s.	2 Gal. Min. Space 3-3 1/2' O.C.
HPU	<i>Hydrangea paniculata</i> 'Uniqua'	Uniqua Hydrangea	4" HL	CG/BB	7	8-10" ht. x 8-10" s.	5 Gal. Min. Space 8" O.C.
RAQ	<i>Rhus aromatica</i> 'Gro-low'	Gro-low Sumac	18" HL	CG	18	2 1/2-3" ht. x 8-8" s.	2 Gal. Min. Space 3 1/2 - 4' O.C.
RAL	<i>Ribes alpinum</i> 'Green Mound'	Green Mound Alpine Currant	18" HL	CG	8	3-5" ht. x 3-5" s.	3 Gal. Min. Space 4' O.C.
SFK	<i>Spiraea fritchiana</i>	Korean Spiraea	18" HL	CG	82	2-3" ht. x 3-4" s.	2 Gal. Min. Space 3-3 1/2' O.C.
SNH	<i>Spiraea nipponica</i> 'Halward's Silver'	Halward's Silver Spiraea	18" HL	CG	30	2-3" ht. x 2-4" s.	2 Gal. Min. Space 2 1/2 - 3' O.C.
SPM	<i>Syringa patula</i> 'Miss Kim'	Miss Kim Lilac	3" HL	BB	9	5-6" ht. x 4-5" s.	Space 4 1/2 - 5' O.C.
VL	<i>Viburnum lentago</i> 'Mohican'	Mohican Viburnum	3" HL	CG/BB	7	6-8" ht. x 8-8" s.	5 Gal. Min. Space 8" O.C.
WFR	<i>Weigela florida</i> 'Rumba'	Rumba Weigela	24" HL	CG/BB	6	3-4" ht. x 4-6" s.	1 Gal. Min. Space 4-5' O.C.
GROUNDCOVERS, GRASSES							
BULBS AND PERENNIALS							
am	<i>Alchemilla mollis</i>	Lady's Mantle	4 1/2"	CONT.	18	12-18" ht. Yellow Jn-Ag	Space 24" O.C.
pa	<i>Hemerocallis 'Anzac'</i>	Anzac Day Lily	4 1/2"	CONT.	70	28" ht. Red Jy-Ag	Space 18-24" O.C.
pf	<i>Hemerocallis 'Chicago Fire'</i>	Chicago Fire Day Lily	4 1/2"	CONT.	100	34" ht. Red Jy-Ag	Space 24" O.C.
nb	<i>Hemerocallis 'Little Business'</i>	Little Business Day Lily	4 1/2"	CONT.	137	22" ht. Rasp. Red Jy-Ag	Space 18" O.C.
pm	<i>Hemerocallis 'Pardon Me'</i>	Pardon Me Day Lily	4 1/2"	CONT.	77	20" ht. Red Jy-Ag	Space 18" O.C.
inc	<i>Lamium maculatum</i> 'Chequera'	Chequera Lamium	4 1/2"	CONT.	85	8" ht. Pink Ag-My	Space 24" O.C.
lc	<i>Lythamchia octostriata</i>	Gooseneck Loosestrife	4 1/2"	CONT.	78	33" ht. White Ag-Sp	Space 18" O.C.
fb	<i>Nepeta 'Fasciated'</i> 'Blue Wonder'	Blue Wonder Catmint	4 1/2"	CONT.	73	18" ht. Lavender My-Ag	Space 18-24" O.C.
sv	<i>Salvia fernandesii</i> 'Victoria Blue'	Annual Salvia	CELL PACK		By Owner	12" ht. Blue all summer	Mix into openings between new plants at entry doors
sh	<i>Sporobolus heterolepis</i>	Prairie Dropseed	4 1/2"	CONT.	90	24-30" ht. Ag-Oct Seedheads	Space 24" O.C.



PLANTING DETAILS

PLANTING PLAN

Potter Lawson



Notes:

Note:
THE LOCATION OF EXISTING UTILITY INSTALLATIONS AS SHOWN ON THE PLAN ARE APPROXIMATE. THERE MAY BE OTHER UTILITY INSTALLATIONS WITHIN THE PROJECT AREA THAT ARE NOT SHOWN.

CALL 800.855.8411
THE ONE TO CALL FOR ALL YOUR UTILITY NEEDS
FAX A LOCATE 1-800-338-3665
TDD (FOR HEARING IMPAIRED) 1-800-542-0289
OR VISIT US ONLINE AT WWW.CALL800THEONE.COM

- INSTALL SHREDDED BARK MULCH IN ALL PLANTING BEDS.
- REFER TO THE SPECIFICATIONS, SECTION 02933 FOR SODDING WORK AND INSTALLATION PROCEDURES.
- REFER TO THE SPECIFICATIONS, SECTION 02950 FOR LANDSCAPE WORK FOR TYPES OF PLANTING MATERIALS AND INSTALLATION PROCEDURES.

06/12/03	BID DOCUMENTS	
Date	Issuance/Revisions	Symbol

AMCORE BANK

VERONA ROAD BRANCH

CITY OF MADISON, WISCONSIN

Drawing Title:
PLANTING PLAN

PL1 Project Number: Drawing No.
2003.06.00

Drawn By: PAS

L101



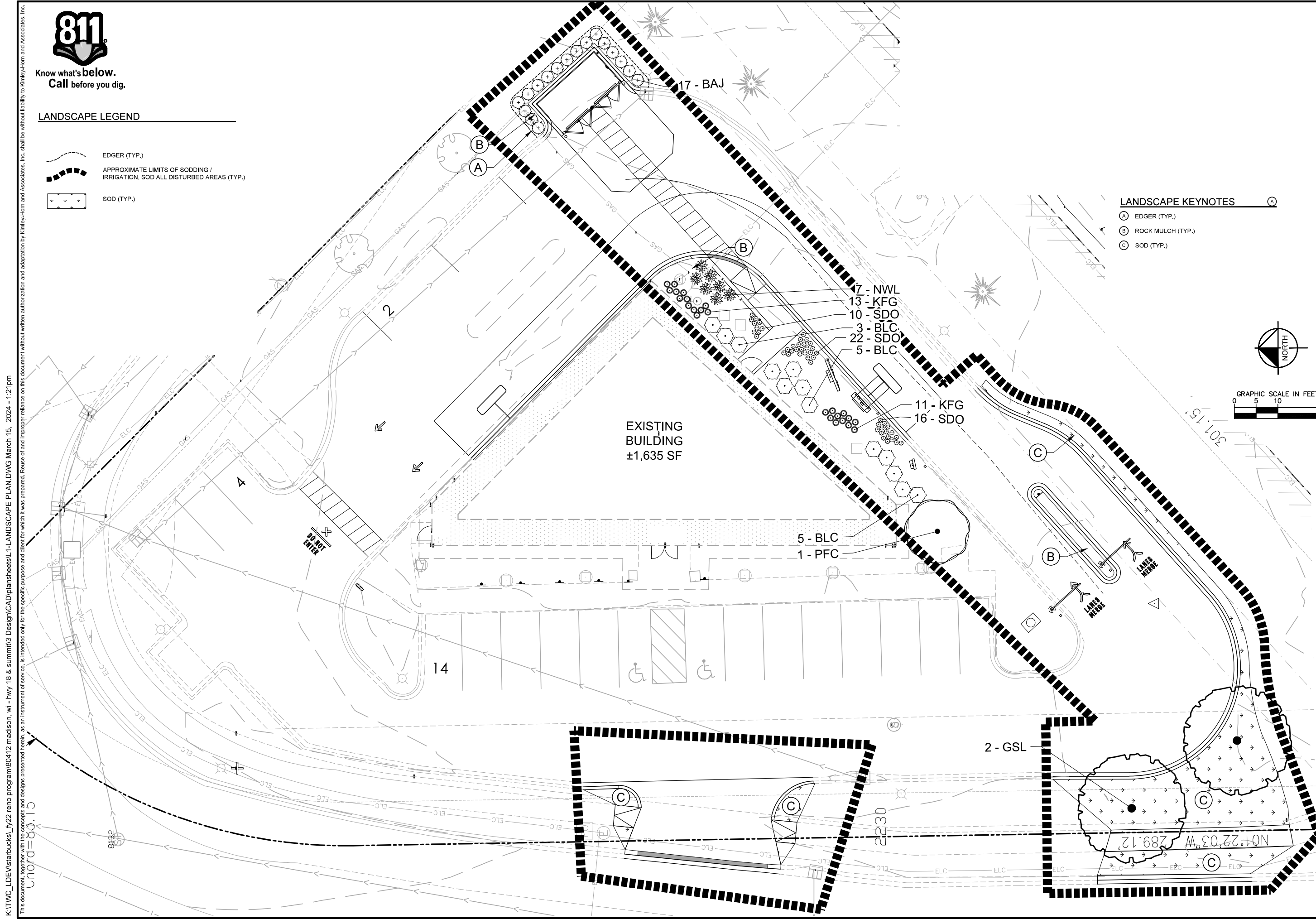
Know what's below.
Call before you dig.

LANDSCAPE LEGEND

- EDGER (TYP.)
- APPROXIMATE LIMITS OF SODDING / IRRIGATION, SOD ALL DISTURBED AREAS (TYP.)
- SOD (TYP.)

LANDSCAPE KEYNOTES

- (A) EDGER (TYP.)
- (B) ROCK MULCH (TYP.)
- (C) SOD (TYP.)



K:\TWC_LDEV\starbucks_fy22_reno_program\80412_madison_wi_hwy_18_summit3_Design\CAD\plansheets\1-LANDSCAPE PLAN.DWG March 15, 2024 - 1:21pm

This document, together with the concepts and designs presented herein, is intended only for the specific purpose and client for which it was prepared. Reuse of and improper reliance on this document without written authorization and adaptation by Kimley-Horn and Associates, Inc. shall be without liability to Kimley-Horn and Associates, Inc.

Chord=83.15

ISSUED FOR PERMIT

STARBUCKS #80412-
HWY 18 & SUMMIT
PREPARED FOR
STARBUCKS

MADISON WI

LANDSCAPE PLAN

KHA PROJECT	160421012
DATE	01/22/2024
SCALE	AS SHOWN
DESIGNED BY	CFK
DRAWN BY	CFK
CHECKED BY	RAH

RYAN A. HYLLESTED
LA-777-14
ROBSON
LANDSCAPE ARCHITECT

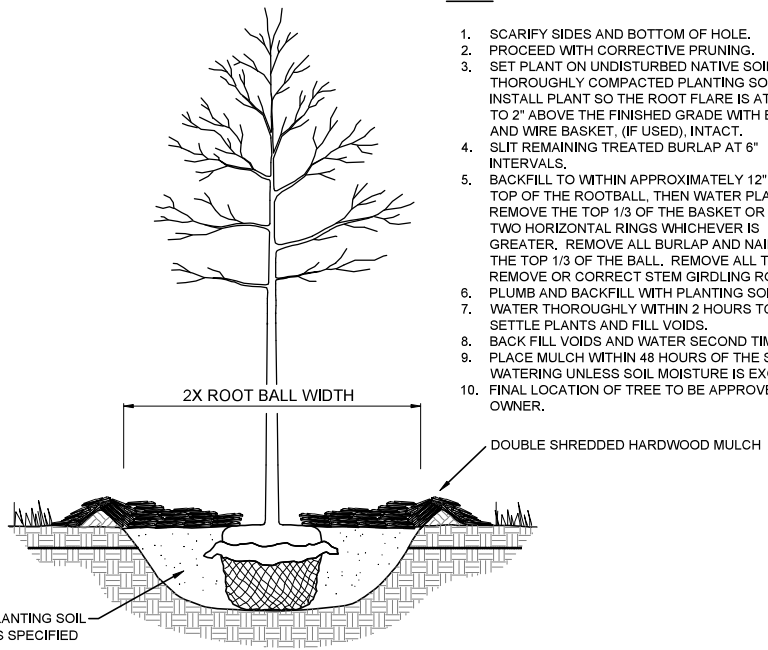
© 2023 KIMLEY-HORN AND ASSOCIATES, INC.
787 EUBANK STREET, SUITE 100, ST. PAUL, MN 55114
PHONE: 651-452-4187
WWW.KIMLEY-HORN.COM

No.	REVISIONS	DATE	BY

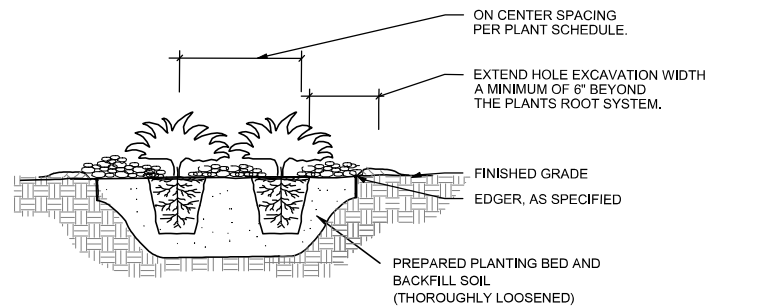
K:\TWC_LDEV\starbucks_fy22_reno_program\80412_madison_wi_hwy_18 & summit\3_Design\CAD\plansheets\L1-LANDSCAPE DETAILS.DWG March 15, 2024 - 1:21pm
 This document, together with the concepts and designs presented herein, is intended only for the specific purpose and client for which it was prepared. Reuse of and improper reliance on this document without written authorization and adaptation by Kimley-Horn and Associates, Inc. shall be without liability to Kimley-Horn and Associates, Inc.

NOTES:

1. SCARIFY SIDES AND BOTTOM OF HOLE.
2. PROCEED WITH CORRECTIVE PRUNING.
3. SET PLANT ON UNDISTURBED NATIVE SOIL OR THOROUGHLY COMPACTED PLANTING SOIL. INSTALL PLANT SO THE ROOT FLARE IS AT OR UP TO 2" ABOVE THE FINISHED GRADE WITH BURLAP AND WIRE BASKET, (IF USED), INTACT.
4. SLIT REMAINING TREATED BURLAP AT 6" INTERVALS.
5. BACKFILL TO WITHIN APPROXIMATELY 12" OF THE TOP OF THE ROOTBALL, THEN WATER PLANT. REMOVE THE TOP 1/3 OF THE BASKET OR THE TOP TWO HORIZONTAL RINGS WHICHEVER IS GREATER. REMOVE ALL BURLAP AND NAILS FROM THE TOP 1/3 OF THE BALL. REMOVE ALL TWINE. REMOVE OR CORRECT STEM GIRDLING ROOTS.
6. PLUMB AND BACKFILL WITH PLANTING SOIL.
7. WATER THOROUGHLY WITHIN 2 HOURS TO SETTLE PLANTS AND FILL VOIDS.
8. BACK FILL VOIDS AND WATER SECOND TIME.
9. PLACE MULCH WITHIN 48 HOURS OF THE SECOND WATERING UNLESS SOIL MOISTURE IS EXCESSIVE.
10. FINAL LOCATION OF TREE TO BE APPROVED BY OWNER.

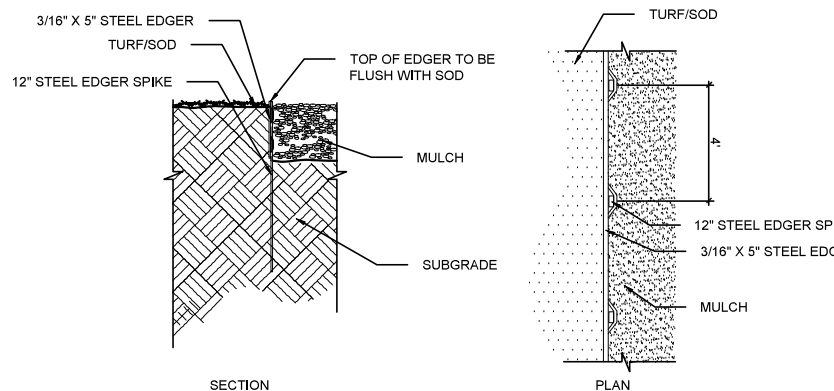


1 TREE PLANTING DETAIL
 SCALE: N.T.S. L101



- NOTES:**
1. SCARIFY SIDES AND BOTTOM OF HOLE.
 2. PROCEED WITH CORRECTIVE PRUNING OF TOP AND ROOT.
 3. REMOVE CONTAINER AND SCORE OUTSIDE OF SOIL MASS TO REDIRECT AND PREVENT CIRCLING FIBROUS ROOTS. REMOVE OR CORRECT STEM GIRDLING ROOTS.
 4. PLUMB AND BACKFILL WITH PLANTING SOIL.
 5. WATER THOROUGHLY WITHIN 2 HOURS TO SETTLE PLANTS AND FILL VOIDS.
 6. BACK FILL VOIDS AND WATER SECOND TIME.
 7. PLACE MULCH WITHIN 48 HOURS OF THE SECOND WATERING UNLESS SOIL MOISTURE IS EXCESSIVE.
 8. MIX IN 3-4" OF ORGANIC COMPOST.

2 SHRUB / PERENNIAL PLANTING DETAIL
 SCALE: N.T.S. L101



3 STEEL EDGER DETAIL
 SCALE: N.T.S. L101

PLANT SCHEDULE

SYMBOL	CODE	QTY	BOTANICAL NAME	COMMON NAME	CONTAINER	CAL/SIZE
ORNAMENTAL TREE						
	PFC	1	MALUS X 'PRAIRIFIRE'	PRAIRIFIRE CRAB APPLE	B & B	1.5" CAL.
OVERSTORY TREE						
	GSL	2	TILIA CORDATA 'GREENSPIRE'	GREENSPIRE LITTLELEAF LINDEN	B & B	2.5" CAL.
CONIFEROUS SHRUBS						
	BAJ	17	JUNIPERUS VIRGINIANA 'BLUE ARROW'	BLUE ARROW JUNIPER	#5 CONT.	3' OC
DECIDUOUS SHRUBS						
	BLC	13	ARONIA MELANOCARPA 'IROQUOIS BEAUTY' TM	IROQUOIS BEAUTY BLACK CHOKEBERRY	#5 CONT.	4' O.C.
ORNAMENTAL GRASSES						
	KFG	24	CALAMAGROSIS X ACUTIFLORA 'KARL FOERSTER'	KARL FOERSTER FEATHER REED GRASS	#1 CONT	18" O.C.
PERENNIALS						
	NWL	7	NEPETA X 'WALKER'S LOW'	WALKER'S LOW CATMINT	#1 CONT.	18" O.C.
	SDO	48	HEMEROCALLIS X 'STELLA DE ORO'	STELLA DE ORO DAYLILY	#1 CONT	1' OC

LANDSCAPE NOTES

- PLANTING**
1. CONTACT COMMON GROUND ALLIANCE AT 811 OR CALL 811.COM TO VERIFY LOCATIONS OF ALL UNDERGROUND UTILITIES PRIOR TO INSTALLATION OF ANY PLANTS OR LANDSCAPE MATERIAL.
 2. ACTUAL LOCATION OF PLANT MATERIAL IS SUBJECT TO FIELD AND SITE CONDITIONS.
 3. NO PLANTING WILL BE INSTALLED UNTIL ALL GRADING AND CONSTRUCTION HAS BEEN COMPLETED IN THE IMMEDIATE AREA.
 4. ALL SUBSTITUTIONS MUST BE APPROVED BY THE LANDSCAPE ARCHITECT PRIOR TO SUBMISSION OF ANY BID AND/OR QUOTE BY THE LANDSCAPE CONTRACTOR.
 5. PROVIDE TWO YEAR GUARANTEE OF ALL PLANT MATERIALS. THE GUARANTEE BEGINS ON THE DATE OF THE LANDSCAPE ARCHITECT'S OR OWNER'S WRITTEN ACCEPTANCE OF THE INITIAL PLANTING. REPLACEMENT PLANT MATERIAL SHALL HAVE A ONE YEAR GUARANTEE COMMENCING UPON PLANTING.
 6. ALL PLANTS TO BE SPECIMEN GRADE, WISCONSIN-GROWN AND/OR HARDY. SPECIMEN GRADE SHALL ADHERE TO, BUT IS NOT LIMITED BY, THE FOLLOWING STANDARDS:
 ALL PLANTS SHALL BE FREE FROM DISEASE, PESTS, WOUNDS, SCARS, ETC.
 ALL PLANTS SHALL BE FREE FROM NOTICEABLE GAPS, HOLES, OR DEFORMITIES.
 ALL PLANTS SHALL BE FREE FROM BROKEN OR DEAD BRANCHES.
 ALL PLANTS SHALL HAVE HEAVY, HEALTHY BRANCHING AND LEAFING.
 CONIFEROUS TREES SHALL HAVE AN ESTABLISHED MAIN LEADER AND A HEIGHT TO WIDTH RATIO OF NO LESS THAN 5:3.
 7. PLANTS TO MEET AMERICAN STANDARD FOR NURSERY STOCK (ANSI Z60.1-2014 OR MOST CURRENT VERSION) REQUIREMENTS FOR SIZE AND TYPE SPECIFIED.
 8. PLANTS TO BE INSTALLED AS PER ANSI STANDARD PLANTING PRACTICES.
 9. PLANTS SHALL BE IMMEDIATELY PLANTED UPON ARRIVAL AT SITE. PROPERLY HEEL-IN MATERIALS IF NECESSARY; TEMPORARY ONLY.
 10. PRIOR TO PLANTING, FIELD VERIFY THAT THE ROOT COLLAR/ROOT FLARE IS LOCATED AT THE TOP OF THE BALLED & BURLAP TREE. IF THIS IS NOT THE CASE, SOIL SHALL BE REMOVED DOWN TO THE ROOT COLLAR/ROOT FLARE. WHEN THE BALLED & BURLAP TREE IS PLANTED, THE ROOT COLLAR/ROOT FLARE SHALL BE EVEN OR SLIGHTLY ABOVE FINISHED GRADE.
 11. OPEN TOP OF BURLAP ON BB MATERIALS; REMOVE POT ON POTTED PLANTS; SPLIT AND BREAK APART PEAT POTS.
 12. PRUNE PLANTS AS NECESSARY - PER STANDARD NURSERY PRACTICE AND TO CORRECT POOR BRANCHING OF EXISTING AND PROPOSED TREES.
 13. WRAP ALL SMOOTH-BARKED TREES - FASTEN TOP AND BOTTOM. REMOVE BY APRIL 1ST.
 14. STAKING OF TREES AS REQUIRED; REPOSITION, PLUMB AND STAKE IF NOT PLUMB AFTER ONE YEAR.
- SOIL**
15. THE NEED FOR SOIL AMENDMENTS SHALL BE DETERMINED UPON SITE SOIL CONDITIONS PRIOR TO PLANTING. LANDSCAPE CONTRACTOR SHALL NOTIFY LANDSCAPE ARCHITECT FOR THE NEED OF ANY SOIL AMENDMENTS.
 16. BACKFILL SOIL AND TOPSOIL TO ADHERE TO WISDOT STANDARD SPECIFICATION 625 (TOPSOIL AND SALVAGED TOP SOIL AND TO EXISTING TOP SOIL). SITE FREE OF ROOTS, ROCKS LARGER THAN ONE INCH, SUBSOIL DEBRIS, AND LARGE WEEDS UNLESS SPECIFIED OTHERWISE. MINIMUM 4" DEPTH TOPSOIL FOR ALL LAWN GRASS AREAS AND 12" DEPTH TOPSOIL FOR TREE, SHRUBS, AND PERENNIALS.
- MULCH**
17. MULCH TO BE AT ALL TREE, SHRUB, PERENNIAL, AND MAINTENANCE AREAS. ROCK MULCH TO MATCH EXISTING SIZE AND COLOR; AT MINIMUM 3" DEPTH. OR APPROVED EQUAL. APPLY PREMIXED HERBICIDE PRIOR TO MULCH PLACEMENT PER MANUFACTURER RECOMMENDATIONS. USE GREEN OR PRE-APPROVED EQUAL, ROCK MULCH TO BE ON COMMERCIAL GRADE FILTER FABRIC, BY TYPAR, OR APPROVED EQUAL WITH NO EXPOSURE. MULCH AND FABRIC TO BE APPROVED BY OWNER PRIOR TO INSTALLATION. MULCH TO MATCH EXISTING CONDITIONS (WHERE APPLICABLE).
- EDGER**
18. EDGING TO BE COMMERCIAL GRADE COL-MET (OR EQUAL) STEEL EDGING: 3/16" THICK x 5" TALL. COLOR BLACK, OR SPADED EDGE. AS INDICATED, STEEL EDGING SHALL BE PLACED WITH SMOOTH CURVES AND STAKED WITH METAL SPIKES NO GREATER THAN 4 FOOT ON CENTER WITH TOP OF EDGER AT GRADE. FOR MOWERS TO CUT ABOVE WITHOUT DAMAGE. UTILIZE CURBS AND SIDEWALKS FOR EDGING WHERE POSSIBLE. WHERE EDGING TERMINATES AT A SIDEWALK, BEVEL OR RECESS ENDS TO PREVENT TRIP HAZARD. SPADED EDGE TO PROVIDE V-SHAPED DEPTH AND WIDTH TO CREATE SEPARATION BETWEEN MULCH AND GRASS. INDIVIDUAL TREE, SHRUB, OR RAIN-GARDEN BEDS TO BE SPADED EDGE, UNLESS NOTED OTHERWISE. EDGING TO MATCH EXISTING CONDITIONS (WHERE APPLICABLE).
- SEED/SOD**
19. ALL DISTURBED AREAS TO BE SODDED, UNLESS OTHERWISE NOTED. SOD TO BE STANDARD MINNESOTA GROWN AND HARDY BLUEGRASS MIX, FREE OF LAWN WEEDS. ALL TOPSOIL AREAS TO BE RAKED TO REMOVE DEBRIS AND ENSURE DRAINAGE. SLOPES OF 3:1 OR GREATER SHALL BE STAKED. SEED AS SPECIFIED PER SUPPLIER/MANUFACTURER RECOMMENDATIONS. IF NOT INDICATED ON LANDSCAPE PLAN, SEE EROSION CONTROL PLAN.
- IRRIGATION**
20. PROVIDE IRRIGATION / OR MODIFY EXISTING IRRIGATION PER OWNERS DIRECTION TO ALL PLANTED AREAS ON SITE. IRRIGATION SYSTEM TO BE DESIGN/BUILD BY LANDSCAPE CONTRACTOR. LANDSCAPE CONTRACTOR TO PROVIDE SHOP DRAWINGS TO LANDSCAPE ARCHITECT FOR APPROVAL PRIOR TO INSTALLATION OF IRRIGATION SYSTEM. CONTRACTOR TO PROVIDE OPERATION MANUALS, AS-BUILT PLANS, AND NORMAL PROGRAMMING. SYSTEM SHALL BE WINTERIZED AND HAVE SPRING STARTUP DURING FIRST YEAR OF OPERATION. SYSTEM SHALL HAVE ONE-YEAR WARRANTY ON ALL PARTS AND LABOR. ALL INFORMATION ABOUT INSTALLATION AND SCHEDULING CAN BE OBTAINED FROM THE GENERAL CONTRACTOR. SYSTEM SHALL INCLUDE A RAIN SENSOR AND APPROPRIATE TECHNOLOGY.
- ESTABLISHMENT**
21. PROVIDE NECESSARY WATERING OF PLANT MATERIALS UNTIL THE PLANT IS FULLY ESTABLISHED OR IRRIGATION SYSTEM IS OPERATIONAL. OWNER WILL NOT PROVIDE WATER FOR CONTRACTOR.
 22. REPAIR, REPLACE, OR PROVIDE SOD/SEED AS REQUIRED FOR ANY ROADWAY BOULEVARD AREAS ADJACENT TO THE SITE DISTURBED DURING CONSTRUCTION.
- WARRANTY**
23. REPAIR ALL DAMAGE TO PROPERTY FROM PLANTING OPERATIONS AT NO COST TO OWNER.
 24. MAINTAIN TREES, SHRUBS, SEED AND OTHER PLANTS UNTIL PROJECT COMPLETION, BUT IN NO CASE, LESS THAN FOLLOWING PERIOD; 1 YEAR AFTER PROJECT COMPLETION, MAINTAIN TREES, SHRUBS, SEED AND OTHER PLANTS BY PRUNING, CULTIVATING, AND WEEDING AS REQUIRED FOR HEALTHY GROWTH. RESTORE PLANTING SAUCERS, TIGHTEN AND REPAIR STAKE AND GUY SUPPORTS AND RESET TREES AND SHRUBS TO PROPER GRADES OR VERTICAL POSITION AS REQUIRED. RESTORE OR REPLACE DAMAGED WRAPPINGS. SPRAY AS REQUIRED TO KEEP TREES AND SHRUBS FREE OF INSECTS AND DISEASE. REPLENISH MULCH TO THE REQUIRED DEPTH, MAINTAIN LAWNS FOR 60 DAYS AFTER INSTALLING SOD INCLUDING MOWING WHEN SOD RECHES 4" IN HEIGHT. WEED PLANTING BEDS AND MULCH SAUCERS AT MINIMUM ONCE A MONTH DURING THE GROWING SEASON. PROVIDE A MONTHLY REPORT TO THE OWNER ON WEEDING AND OTHER MAINTENANCE RESPONSIBILITIES.

KHA PROJECT		160421012	DATE	01/22/2024	SCALE	AS SHOWN	DESIGNED BY	CFK	DRAWN BY	CFK	CHECKED BY	RAH		
KIMLEY-HORN		RYAN A. HYLLESTED		LA-777-14		ROSE		LANDSCAPE ARCHITECT		2023 KIMLEY-HORN AND ASSOCIATES, INC.		787 EUSTIS STREET, SUITE 100, ST. PAUL, MN 55114	PHONE: 651-454-1877	WWW.KIMLEY-HORN.COM
LANDSCAPE DETAILS														
ISSUED FOR PERMIT														
STARBUCKS #80412- HWY 18 & SUMMIT														
PREPARED FOR STARBUCKS														
MADISON														
SHEET NUMBER L101														

KEY NOTES

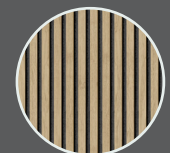
- 1 NEW CANOPY AT DRIVE THRU
- 2 NEW TRASH ENCLOSURE/ LOCATION
- 3 PAINT EXISTING BRICK SW7637
- 4 PAINT EXISTING FASCIA SW7637
- 5 DEMO EXISTING WINDOWS/ WALL FOR NEW FULL HEIGHT WINDOWS/ STOREFRONT
- 6 NEW DRIVE THRU WINDOW LOCATION, SHELF, AIR CURTAIN, ADJ. WINDOWS, SCONCE
- 7 NEW SIGNAGE - TO BE CONFIRMED WITH OVERALL EXTERIOR DESIGN
- 8 DEMO WALL FOR FULL HEIGHT WINDOW/ STOREFRONT
- 9 MEP SCREEN W/ LANDSCAPING
- 10 NEW BOH DOOR
- 11 LANDSCAPING
- 12 NEW EXTERIOR WOOD CLADDING



BRICK AND FASCIA PAINTED
SW7030 ANEW GRAY



STONE VENEER - EXISTING TO REMAIN



NEW TECH - JAPANESE CEDAR -
BELGIAN BOARD

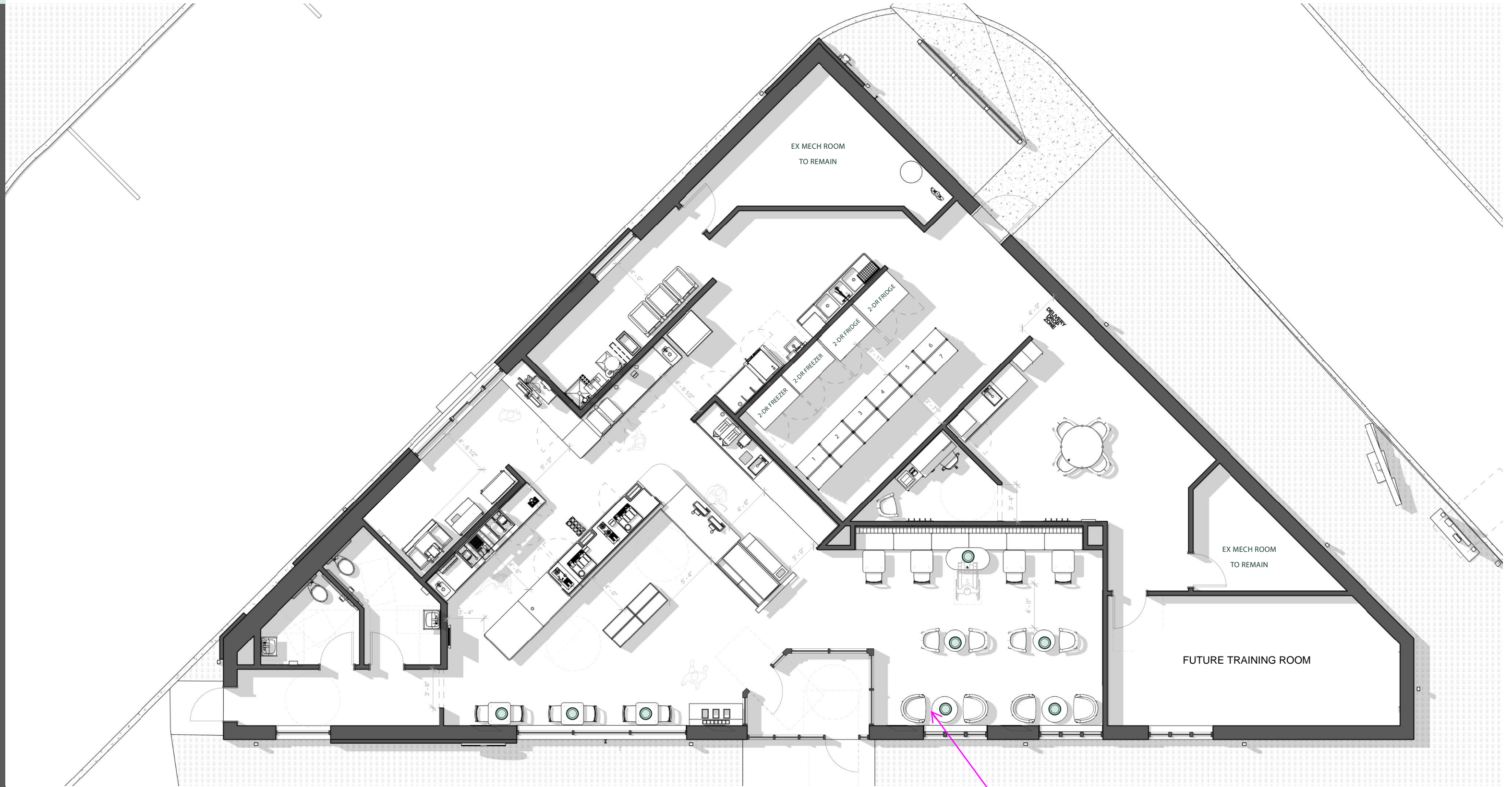
PERSPECTIVE
HWY 18 & SUMMIT

STORE #80412
CPN# 97077-001
DATE: 2023-11-10

12" WORDMARK

SEATING

INTERIOR 17
CUSTOMER OCCASIONS - 8



PROPOSED FLOOR PLAN

TWO TOPS W/ HARD SEATING.

