



Heartland Housing, Inc. & Heartland Health Outreach | Madison CDA Homeless Supportive Housing | Jan. 9th, 2014

Heartland Housing, Inc.

Heartland Alliance Subsidiary
Property Management
Real Estate Development

Heartland Health Outreach

Heartland Alliance Subsidiary
Healthcare Clinical Operations
Heartland Center for Systems Change
Healthcare Business Operations

Heartland Health Centers

Heartland Alliance Affiliate
School-Based Health
Community-Based Health

Heartland Human Care Services

Heartland Alliance Subsidiary
Youth & Residential Services
Wellness & Prevention
Employment & Economic
Opportunity
Housing

Heartland Alliance International

Heartland Alliance LLC
International Programs
Marjorie Kovler Center



Heartland Alliance

Impact
NTJN
Policy
National Immigrant Justice Center
Strategic Services

HEARTLAND ALLIANCE

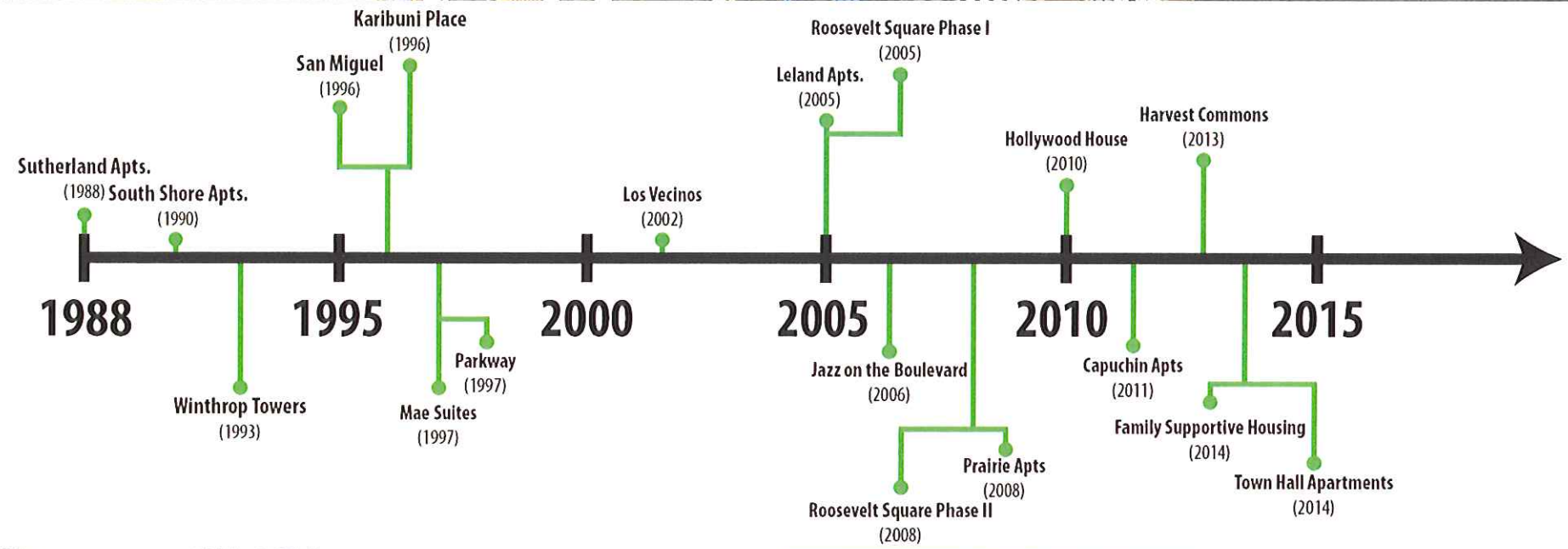
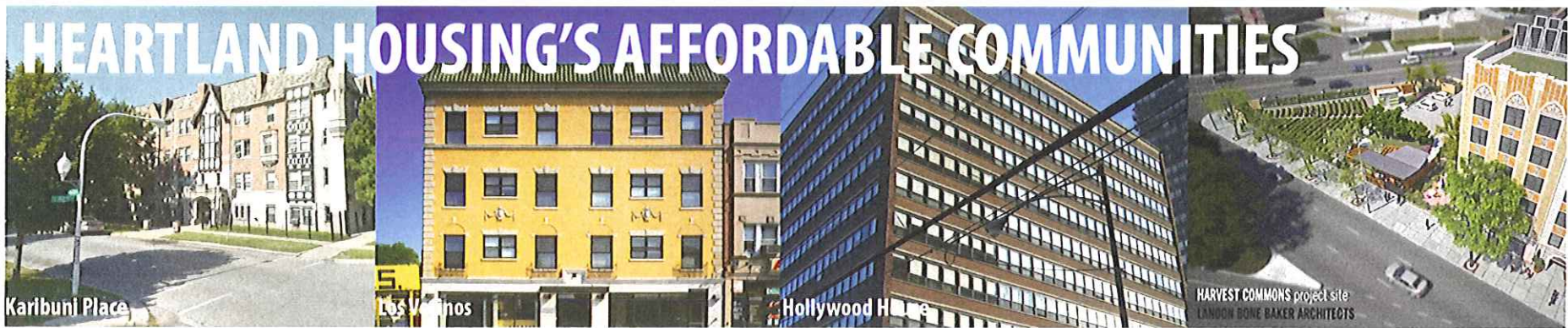
HOUSING

- Non-profit affordable housing developer incorporated in 1988
- Mission to facilitate the development of people through the preservation and creation of quality affordable & permanent supportive housing.
- Portfolio
 - ~1,850 units developed
 - 16 total developments + 2 under construction
 - Currently manage ~850 units
 - Primary focus – 100% supportive housing for those who are homeless and other vulnerable populations, including formerly incarcerated individuals

HEARTLAND ALLIANCE

HEALTH

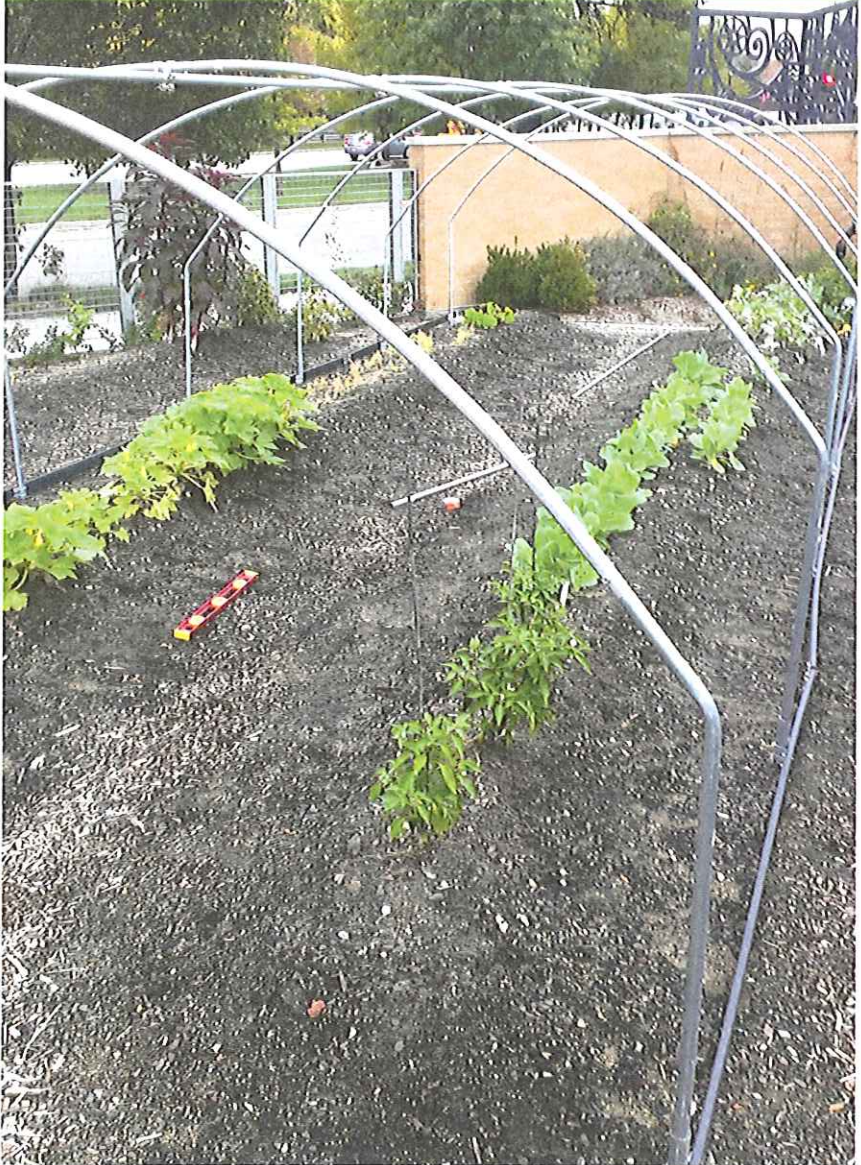
- The health care partner of Heartland Alliance founded in 1985.
- Community health organization dedicated to addressing service and health needs of disenfranchised populations.
- Has been a federally qualified health center (FQHC) since 1991.
- Services include patient-centered primary care, oral health, mental health and substance use treatment, and supportive services, as well as linkages to community partner agencies.
- Operates a continuum of over 200 permanent supportive housing unit for people who are homeless and have a serious mental illness, dual diagnosis and chronic health conditions.



HIGH-QUALITY DESIGN



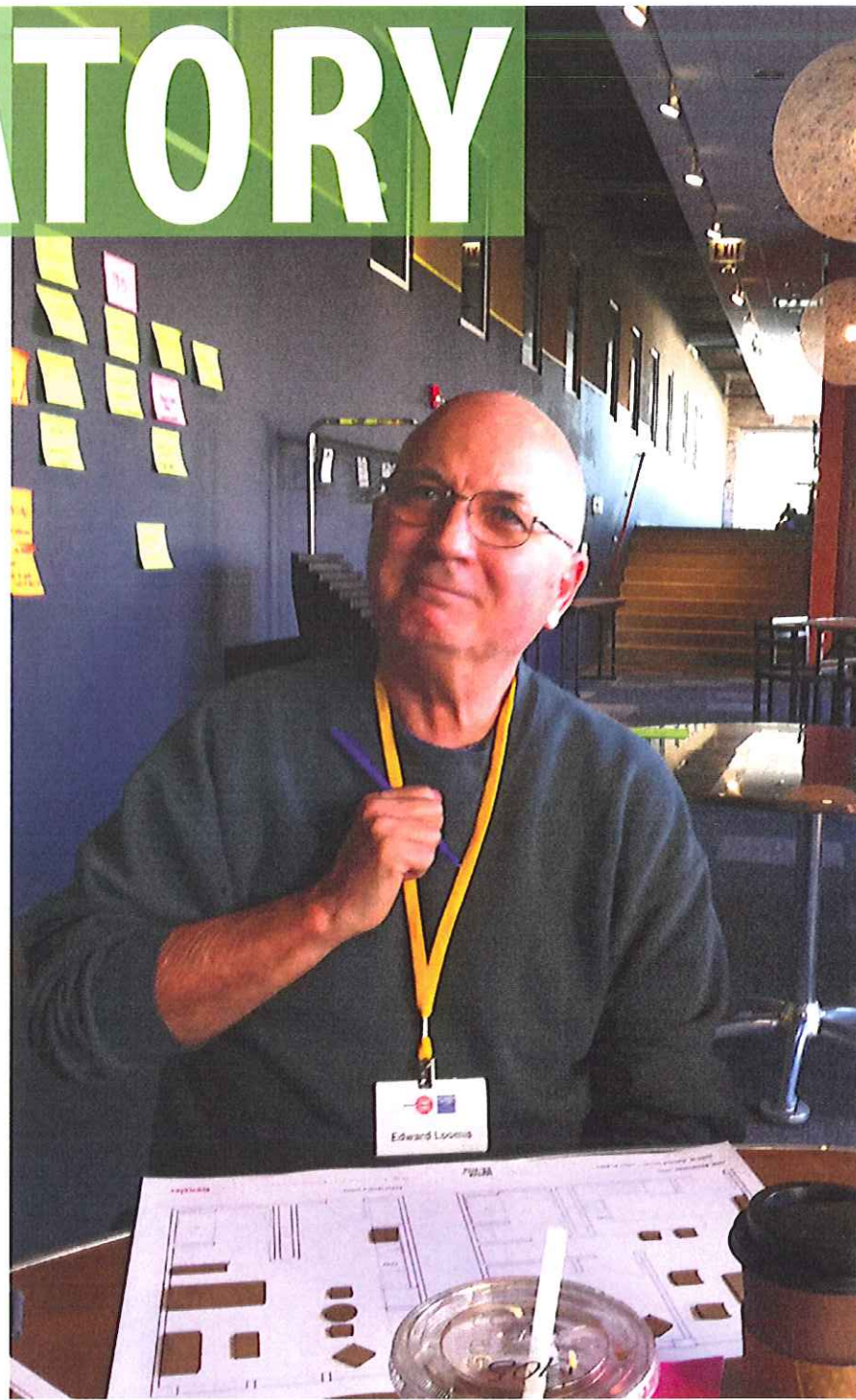
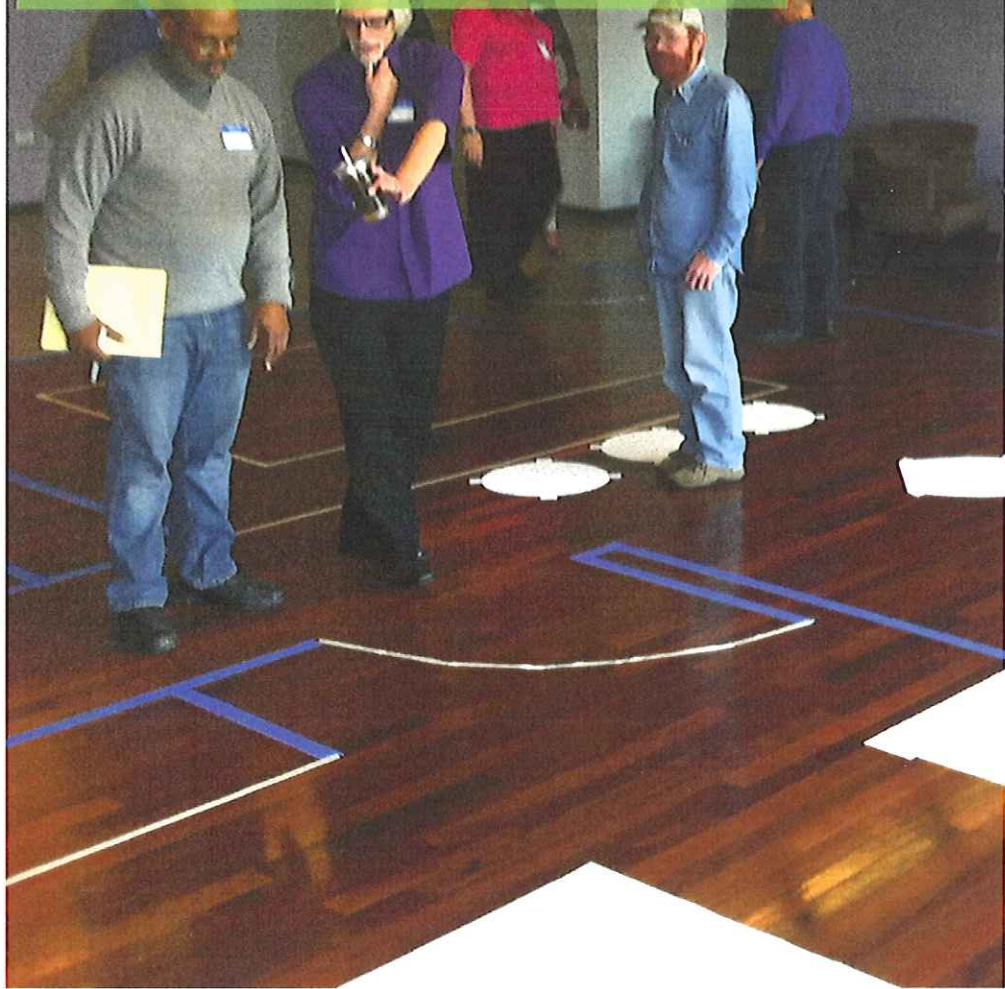
HEALTHY LIVING



SECURE BUILDINGS



PARTICIPATORY DESIGN



AWARD WINNING

Awards:

Harvest Commons: Affordable Housing Finance Magazine's 2013 Readers' Choice Awards for the Nation's Best Affordable Housing Developments – Winner in the Green category

Harvest Commons: 2013 J. Timothy Anderson Award for Excellence in Historic Preservation for the National Housing and Rehabilitation Association – Winner in Most Innovative Adaptive Reuse category and Finalist in the Judges Award: Achievement of Sustainability category

Harvest Commons: 2013 AIA Chicago Citation of Merit in the Distinguished Buildings Award category

Hollywood House: LISC's 2011 Chicago Neighborhood Development Awards – Winner of the 2011 Polk Bros. Foundation Affordable Rental Housing Preservation Award
LISC's 2006 Chicago Neighborhood Development Awards – Winner of the Non-Profit Neighborhood Development Group of the Year
The Saint Joseph The Worker Award from the Evangelical Catholic Bishop for the Diocese of the Northwest – November 2, 2013.

Prairie Apartments: 2009 WCREW Showcase Vision Award winner

Prairie Apartments: Wisconsin Builder 2008 Top Project Award winner

PROFESSIONAL ON-SITE PROPERTY MANAGEMENT

- Tenant Selection Plan
- Rules & Regulations
- Consistency
- Collaboration



PROFESSIONAL ON-SITE SUPPORTIVE SERVICES

- Heartland Health Outreach introduction and background
- Relationship-based partnership
- Comprehensive needs assessment
- Linkage to services
 - Warm handoffs
 - Partnerships with service providers
- Care coordination
 - Reinforcement of treatment or other services a home
 - Open communication with service providers

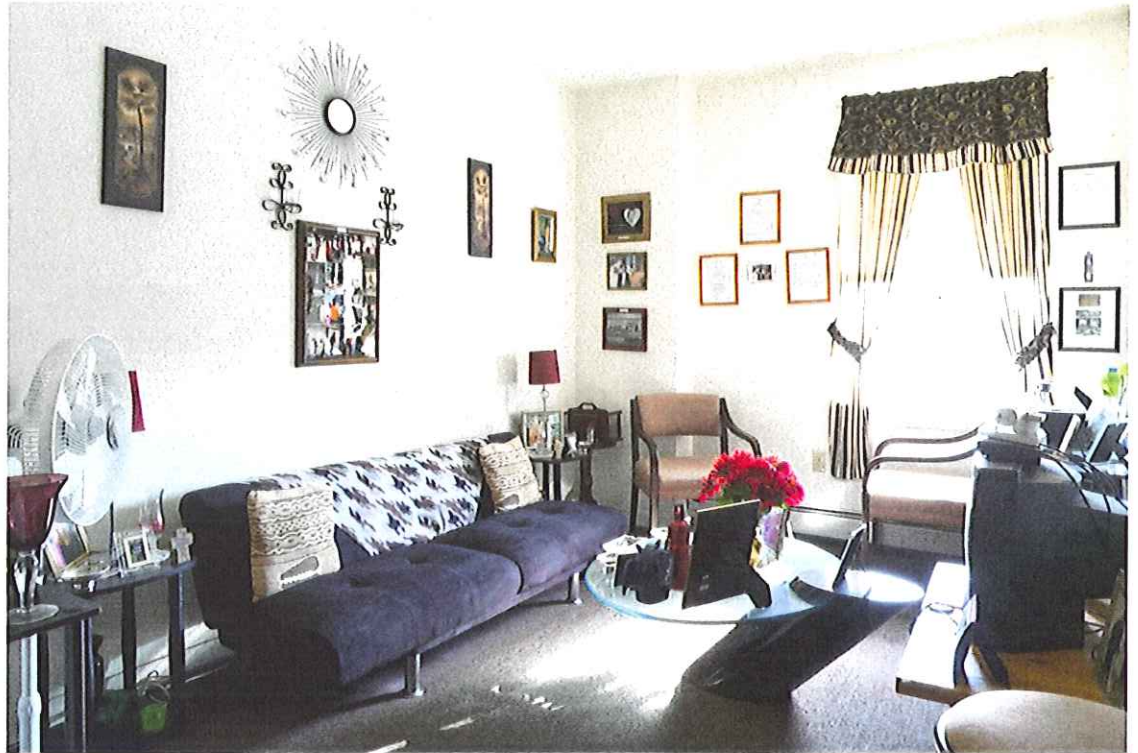


LELAND APARTMENTS



Leland Apartments

- Overview
 - 137 studios and 1 BR units
 - Uptown neighborhood in Chicago
 - Population served
- Supportive services - Pathways



Leland Apartments

- Property management
 - Staffing
 - Community outreach
 - Keys to success



CAPUCHIN APARTMENTS



Capuchin Apartments

- Overview
 - 38 studios and 1 BR units
 - Milwaukee, WI
 - Population served
- Supportive Services
 - Guest House
 - St. Ben's



Capuchin Apartments

- Property management
 - Staffing
 - Keys to success



A photograph of a wooden plank wall. The planks are vertical and made of light-colored wood with visible grain and knots. Small silver screws are visible along the top and bottom edges of the planks. In the center of the wall, the words "HARVEST" and "COMMONS" are displayed in large, bright yellow, 3D block letters. The letters are arranged in two rows: "HARVEST" on top and "COMMONS" below it. The lighting is even, highlighting the texture of the wood and the vibrant color of the letters.

**HARVEST
COMMONS**

Harvest Commons

- Overview
 - 89 studios
 - Near West Side of Chicago
- Supportive Services
 - Heartland Human Care Services
 - St. Leonard's Ministries



Harvest Commons

- Transform a problem property into a beautiful, historically restored community asset.

Before



After



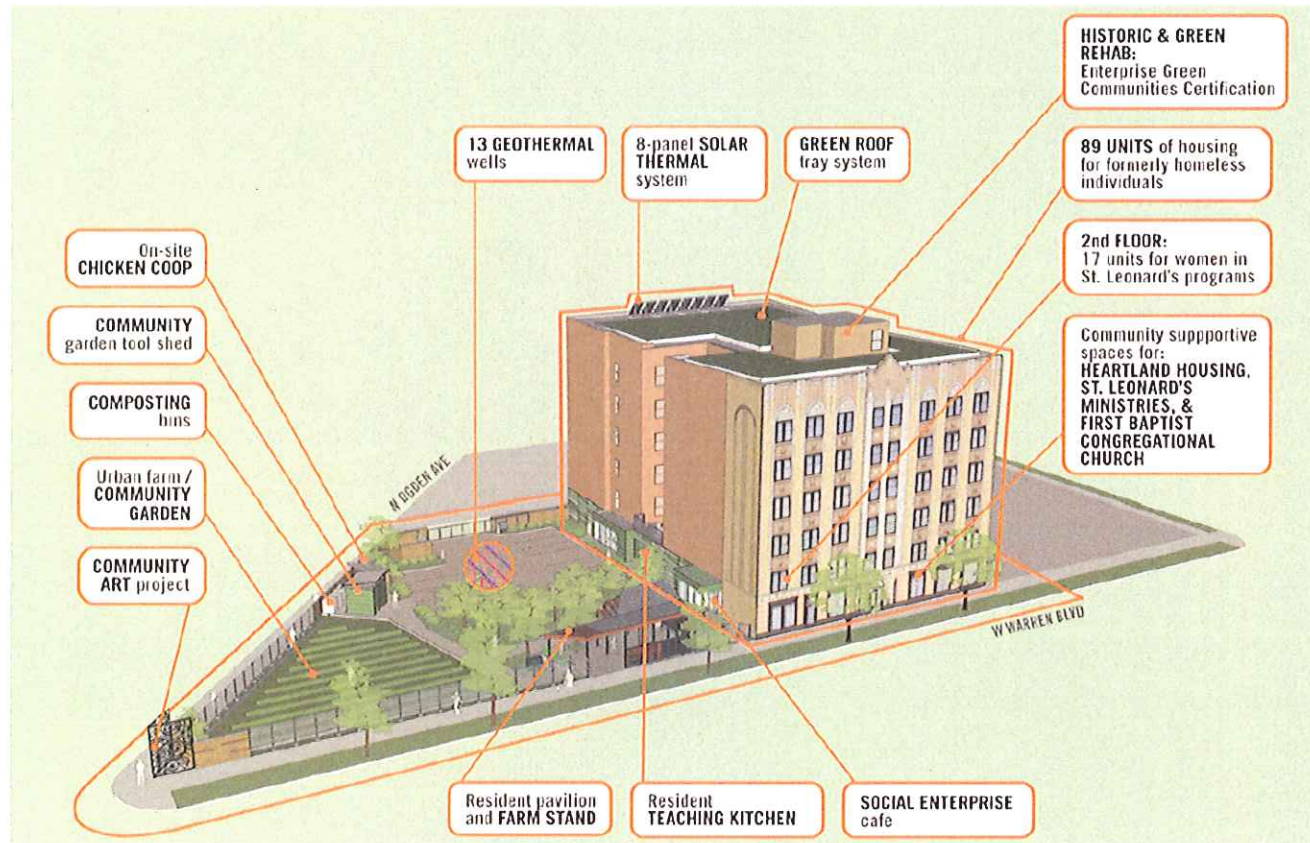
Harvest Commons

- Maintaining deep affordability in an area in transition.



Harvest Commons

- High-quality and ultra-green living for residents to instill a sense of pride in their home and promote energy and water efficiency.



Harvest Commons

- Comprehensive on-site services with Heartland Human Care Services and St. Leonard's Ministries to ensure housing stability.

- 72 units for residents who have experienced chronic homelessness, mental illness and/or a substance abuse challenge.
- 17 units for residents who were formerly incarcerated in the IL prison system.
- Services include case management, substance abuse counseling, life skills training, workforce readiness, & relapse prevention (specifically for residents who were formerly incarcerated).



Harvest Commons

Growing Green Together

- Program to engage the 89 residents in healthy, active and stable lifestyles.
- Best practices in sustainable design & property management.
- On-site urban farm, farm stand & teaching kitchen.



Harvest Commons

Workforce Development:

- Gracie's Café
- Teaching Kitchen
- Urban Garden
- Case Management

