



VANDEWALLE & ASSOCIATES INC.

To: Janine Glaeser
From: Brian Munson
CC: Matt Gilhooly
Date: Tuesday, June 18, 2019
Re: KCG Meadowlands Multi-Family

Attached please find additional drawings for the 6810 Milwaukee Street PUD submittal, per your request, including the following:

- Black & white elevations
- Lighting cut sheets

Please let me know if you need any additional information.

JOB _____ TYPE _____
 NOTES _____ APPROVALS _____

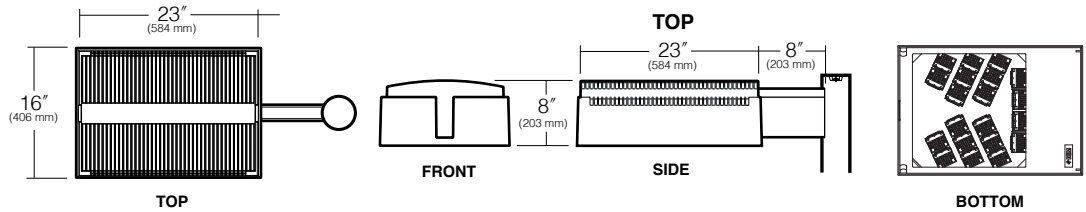
FEATURES

- Full Cutoff PicoPrism technology
- Patented low profile luminaire¹
- Available in 580nm, 3000K, 4000K and 5000K standard CCT
- Type 1, 2, 3, 4, 5, R, L distributions
- 0-10V dimming drivers standard
- Sealed optical chamber, IP66 certified

Certifications



SPECIFICATIONS



Max. Weight = 45 lbs. EPA 1.8 for 1A.
 See Configuration for Additional EPAs.

ORDERING CODE

Configuration	EPA	Housing	Distribution	Drive Current	Source	Color Temperature ²	Volts	Fixture Finish	Photocell Options
1A	1 Arm Side Mt.	ET Large, 80 LEDs 94W (350mA) 188W(700mA)	1 Type I	P35 350mA PicoPrism	80L 80 LEDs	2K 580nm ³	120V ¹	BL Black	A25-7 7-pin Photocell Receptacle
2B	2 Arm Side Mt.		2 Type II			P70 700mA PicoPrism	3K 3000K	208V ¹	DB Dark Bronze
2L	2 Arm Side Mt.		3 Type III	4K 4000K			240V ¹	GT Graphite	A31 208V Button Photocell
3T	3 Arm Side Mt.		4 Type IV	5K 5000K			277V ¹	LG Light Gray	A32 240V Button Photocell
3Y*	3 Arm Side Mt.		5 Type V				347V ¹	PS Platinum Silver	A33 277V Button Photocell
4C	4 Arm Side Mt.		R Type R, Right			480V ¹	TT Titanium	A34 480V Button Photocell	
1W	Single Wall Mt.	L Type L, Left			WH White	A35 347V Button Photocell			
HSF	Horizontal Slip-fitter Mount					CC Custom Color*			

*Available round poles only. EPA is for Fixture only

Fusing	Lens Options	NFO Option	Optional Entablatures	Controls	Mounting Options
SF 120, 277, 347 Line Volts DF 208, 240, 480 Line Volts	LS Polycarbonate Lens ⁵	NFO Neighbor Friendly Optic. Photometry available for Type III/IV. All others, consult factory.	A1 Arch A2 Broken Arch A3 Stepped Arch A4 Stepped Brock Arch A5 Standard Entablature P6 Peak P7 Broken Peak P8 Stepped Peak P9 Stepped Broken Peak P10 Stepped	Wireless WIR-RMI-IO 120-480V, 1000' range, wiSCAPE RF control system with on/off/dim, alerts, monitoring and metering capabilities Motion SCL-R Round Pole Mounted Occupancy Sensor up to 16' SCL-S Square Pole Mounted Occupancy Sensor up to 16' SCH-R Round Pole Mounted Occupancy Sensor 16' to 30' SCH-S Square Pole Mounted Occupancy Sensor 16' to 30'	VSF Vertical Slipfitter Mount for 2" pipe tenon, (2-3/8" O.D.) SVSF Vertical Slipfitter Mount square for 2" pipe tenon, (2-3/8" O.D.) Side Arm Mount 3 3" O.D. Pole 3.5 3.5" O.D. Pole 4 4" O.D. Pole 5 5" O.D. Pole 6 6" O.D. Pole SQ Square Pole

Microsoft, Encarta, MSN, and Windows are either registered trademarks or trademarks of Microsoft Corporation in the United States and/or other countries.

For Pole Spec Select: http://www.kimlighting.com/products/arms_and_poles/
 For Control Spec Select: <http://trpsl.com/index.html>

¹ US Patent No. D568,521 S. Other patents pending.
² For custom optics and color temperature configurations, contact factory.
³ Turtle friendly. Maximum 500mA drive current for 2K amber option.
⁴ 347V & 480V currents may be supplied with step-down transformer.
⁵ Use only when vandalism is anticipated to be high. Required only for vandal protection in locations where fixtures can be reached by unauthorized persons.
⁶ Not available with other sensor or wireless control options.
⁷ Specify group and zone at time of order. See www.hubbellighting.com/sitesync for more details. Order at least one SiteSync interface accessory SWUSB or SWTAB. Each option contains SiteSync License, GUI, and Bridge Node.

Kim Lighting reserves the right to change specifications without notice.

SiteSync Lighting Control is available from our most popular brands in a broad range of award-winning product families. † When ordering with SiteSync, one of the following interface options must be chosen and ordered separately. Each option contains the SiteSync License, GUI and Bridge Node.

Control Accessories

SW7PR ^{6,7}	Site Sync with 7 pin PCR
SWUSB [†]	SiteSync Software on USB
SWTAB [†]	SiteSync Windows® Tablet
SWBRG [†]	SiteSync Wireless Bridge Node
WIR-RME-L	wiSCAPE 7-pin Module
NXOFM-1R1D-UNV	NX 7-pin Module

Spectroradiometric			
	3000K Average	4000K Average	5000K Average
Color Rendering Index (CRI)	≥75	≥70	≥65
Power Factor	>.90	>.90	>.90

Projected Lumen Maintenance		
mA	50,000 hrs	100,000 hrs
350 mA	96.58%	94.30%
700 mA	91.99%	86.88%

Electrical Drive Current					
350mA			700mA		
Volts - AC	Amps - AC	System Watts	Volts - AC	Amps - AC	System Watts
120	0.78	94	120	1.57	188
208	0.45	94	208	0.90	188
240	0.39	94	240	0.78	188
277	0.34	94	277	0.68	188
347	0.27	94	347	0.54	188
480	0.20	94	480	0.39	188

B.U.G. Rating for 350mA (TM15) in Lumens where B = Backlight, U = Uplight, G = Glare								
Temperature	Type I	Type II	Type III	Type III NFO	Type IV	Type IV NFO	Type V	Type L/R
3000K	B4 U0 G4	B3 U0 G3	B3 U0 G3	B2 U0 G2	B1 U0 G3	B0 U0 G3	B4 U0 G3	B3 U0 G3
4000K	B4 U0 G4	B3 U0 G3	B3 U0 G3	B2 U0 G2	B1 U0 G3	B0 U0 G3	B4 U0 G3	B3 U0 G3
5000K	B4 U0 G4	B3 U0 G3	B3 U0 G3	B2 U0 G2	B1 U0 G3	B0 U0 G3	B4 U0 G3	B3 U0 G3

Absolute Lumens for 350mA								
Temperature	Type I	Type II	Type III	Type III NFO	Type IV	Type IV NFO	Type V	Type L/R
3000K	10223	10144	10048	8772	10013	9045	10285	10024
4000K	10485	10404	10306	8996	10270	9277	10548	10281
5000K	10605	10523	10424	9099	10387	9383	10669	10398

B.U.G. Rating for 700mA (TM15) in Lumens where B = Backlight, U = Uplight, G = Glare								
Temperature	Type I	Type II	Type III	Type III NFO	Type IV	Type IV NFO	Type V	Type L/R
3000K	B5 U0 G5	B4 U0 G4	B3 U0 G4	B3 U0 G4	B1 U0 G4	B0 U0 G4	B4 U0 G3	B4 U0 G4
4000K	B5 U0 G5	B4 U0 G4	B3 U0 G4	B3 U0 G4	B1 U0 G4	B0 U0 G4	B4 U0 G3	B4 U0 G4
5000K	B5 U0 G5	B4 U0 G4	B3 U0 G4	B3 U0 G4	B1 U0 G4	B0 U0 G4	B5 U0 G3	B4 U0 G4

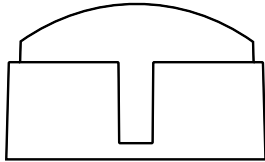
Absolute Lumens for 700mA								
Temperature	Type I	Type II	Type III	Type III NFO	Type IV	Type IV NFO	Type V	Type L/R
3000K	18085	17946	18764	16687	17731	16060	18972	17539
4000K	18549	18405	19245	17114	18185	16472	19458	17988
5000K	18761	18616	19465	17310	18393	16660	19680	18194

LED performance and lumen output continues to improve at a rapid pace. Log onto www.kimlighting.com to download the most current photometric files from Kim Lighting's IES File Library. For custom optics and color temperature configurations, contact factory.

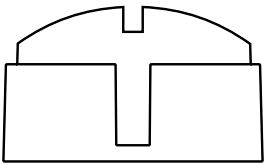
Kim Lighting reserves the right to change specifications without notice.

Optional Entablatures (Entabs)

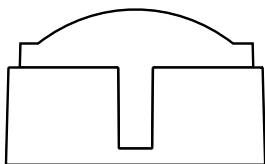
Arched Entablatures



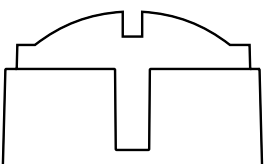
Arch Cat. No. **A1**



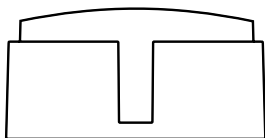
Broken Arch Cat. No. **A2**



Stepped Arch Cat. No. **A3**

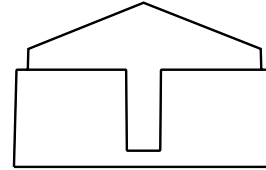


Stepped Broken Arch Cat. No. **A4**

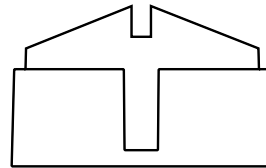


Standard Entablature
 Follows fixture body profile Cat. No. **A5**

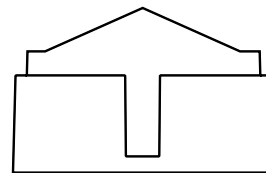
Peaked Entablatures



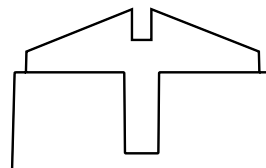
Peak Cat. No. **P6**



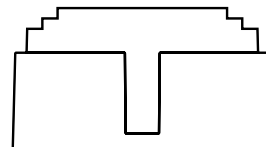
Broken Peak Cat. No. **P7**



Stepped Peak Cat. No. **P8**



Stepped Broken Peak Cat. No. **P9**



Stepped Cat. No. **P10**

Specify Entablature and color.
 Example: [A2/LG]

Entablature Specifications: Stamped from .090 aluminum sheet, mechanically attached to front and back of housing with no visible fasteners. For custom colors and/or custom Entablatures, consult your Kim representative. See page 1 for dimensions.

Kim Lighting reserves the right to change specifications without notice.

SPECIFICATIONS

Housing:

- Extruded low copper aluminum main body.
- Die-cast low copper aluminum electrical gear compartment.
- Stainless steel hardware.
- Die cast wall separates the optical and electrical compartment acting as thermal barrier.
- Electrical gear compartment doors are fastened with two hinges and a latch made of stainless steel.
- Silicone gaskets seal the compartments at the barrier surface.

Optical Module:

- PicoPrism® refractors (enclosed LED PCBs for IP66 rating) aimed toward the task and spreads horizontally to produce great uniformity.
- Type I, II, III, IV, V, L (left), and R (right) standard distributions. Custom available.
- 3000K, 4000K, 5000K standard CCT. Amber and custom available.
- IP66 certified.
- Die-cast, low copper aluminum heat sink modules provide thermal transfer at PCB level.
- Anodized aluminum carrier plate and heat sink modules.

Lens Frame:

- One-piece low copper aluminum alloy die-cast is secured to housing with two toolless latches.

Neighbor Friendly Optic

- Optional integrated Neighbor Friendly Optic on each LED module to completely control unwanted backlight. Most effective with Type III and IV distributions.

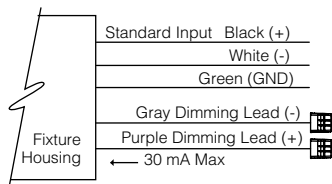
Electrical Characteristics:

- Pre-assembled, aluminum gear tray.
- 120V through 480V @ 50/60Hz.
- Class 2, 350mA or 700mA
- Power Factor = >.90
- National Electrical Code, ANSI/NFPA 70.
- 10kV surge suppression.
- Thermal shield thermal control.
- -30c starting driver.

- 0-10V dimming interface.
- All electronic components are IP66 rated.
- Electronic components are UL and/or CSA recognized.
- Standard programmable driver for variable drive current settings from 350mA to 700mA.

Dimming:

- 10% to 100% dimming using standard 0-10V interface driver.
- To activate the dimming system, a wiring harness is supplied and attached to the DIM Port (DIM IN) on the thermal shield protection system. This port allows the 0-10V Interface to bypass the thermal shield and control the driver.
- The thermal shield works in conjunction with the control system to assure that overheating will not harm the LEDs.
- The wiring harness is connected with the use of the Purple lead as the positive (+) and the Grey lead as the negative (-) to an available control signal (by others).



Support Arm:

- Speed Mount and a reinforcing plate are provided with wire strain relief.
- Speed Mount is square or circular cut for specified pole size and shape.
- Die-cast, low copper aluminum support arm for direct pole mount.
- Die-cast aluminum tool-less entry splice access cover.
- Terminal block is mounted in the arm cavity and accepts #14 to #8 wire sizes.
- Prewired to electrical module with quick-disconnect plugs located inside the electrical compartment.
- Optional cast, low copper aluminum horizontal slip-fitter with adaptor plate to secure the luminaire to 1-1/4" to 2" IPS pipe size arms.
- Optional cast aluminum wall mount plate assembly. Attaches to the wall over the junction box. Luminaire attaches to the wall plate with a square cut Speed Mount.

Finish:

- Fade and abrasion resistant, electrostatically applied, thermally cured, triglycidal isocyanurate (TGIC) polyester powdercoat.
- Standard colors include (BL) Black, (DB) Dark Bronze, (GT) Graphite, (WH) White, (PS) Platinum Silver, (LG) Light Gray, (TT) Titanium, and (CC) Custom Color (Include RAL#).

Fusing:

SF for 120, 277 and 347 Line Volts
DF for 208, 240 and 480 Line Volts.

- High temperature fuse holders factory installed inside the fixture housing. Fuse is included.

Certifications and Listings:

- UL 1598 Standard for wet locations for Luminaires.
- UL 8750 Standard for Safety for Light Emitting Diode (LED) Equipment for use in Lighting Products.
- IP66 certified.
- CSA C22.2#250.0 Luminaires.
- ANSI C136.31-2010 3G Vibration tested and compliant.
- RoHS compliant.
- IDA approved, 3000K and warmer CCTs only.

CAUTION:

- Fixtures must be grounded in accordance with national, state and/or local electrical codes, Failure to do so may result in serious personal injury.

WARRANTY:

- For full warranty see <http://www.hubbellighting.com/resources/warranty>

Kim Lighting reserves the right to change specifications without notice.

CONTROLS

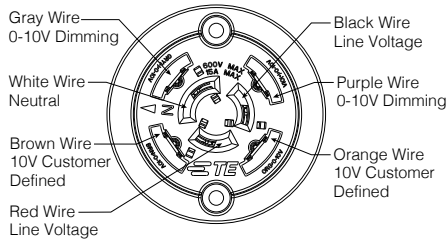
Photozell Receptacle

A25-7

Fully gasketed and wired 7-pin receptacle option. Easy access location above the electrical compartment. 7-pin construction allows for a user-defined interface and provides a controlled definition of operational performance. ANSI twist-lock control module by-others.

Standard customer operation modes:

1. Traditional on/off photoelectric control.
2. 5-pin wireless photoelectric control for added dimming feature.
3. 7-pin wireless photoelectric control for dimming and additional I/O connections for customer use.



Button Photocell

A30 for 120V, **A31** for 208V, **A32** for 240V, **A33** for 277V, **A35** for 347V, **A34** for 480V, Photocell is factory installed inside the housing with a fully gasketed sensor on the side wall. For multiple fixture mountings, one fixture is supplied with a photocell to operate the others.

Wireless Controls

wiSCAPE™

Hubbell Control Solution's wiSCAPE™ wireless control modules allow an individual fixture to be managed, monitored and measured. The modules communicate securely over a robust certified meshed radio signal. The wiSCAPE modules provide on/off/dim control, external device input, alerts and metering.

WIR-RMI-IO

wiSCAPE Internal Module, 120-480V, 1000ft range (LOS), 3 Digital Inputs/1 Analog Input, 2 Outputs.

WIR-RME-L

wiSCAPE External Module, 120-480V, 1000ft range (LOS), Internal Photocell, 1 Digital Input, Compatible with the A-25-7H option

SiteSync™¹

SiteSync™ wireless control system for reduction in energy and maintenance cost while optimizing light quality 24/7. See ordering information or visit www.hubbellighting.com/products/sitesync for more details.

Pole Mounted

Round Pole-Mounted Occupancy Sensor up to 16'

SCL-R

Round Pole-Mounted Occupancy Sensor up to 16' - an outdoor occupancy sensor with 0-10V interface dimming control that mounts directly to the pole. Wide 360° pattern. Module colors are available in Black, Gray, and White. Module is cut for round pole mounting. Pole diameter is needed upon order. Poles to be drilled in the field will be provided with installation instructions.

Ordering Example: SCL-R4⁴/277²/BL³

Square Pole-Mounted Occupancy Sensor up to 16'

SCL-S

Square Pole-Mounted Occupancy Sensor up to 16' - an outdoor occupancy sensor with 0-10V interface dimming control that mounts directly to the pole. Wide 360° pattern. Module colors are available in Black, Gray, and White. Module is cut for square pole mounting. Pole diameter is needed upon order. Poles to be drilled in the field will be provided with installation instructions.

Ordering Example: SCL-L/277²/BL³

Round Pole-Mounted Occupancy Sensor 16' to 30'

SCH-R

Round Pole-Mounted Occupancy Sensor: 16' to 30' - an outdoor occupancy sensor with 0-10V interface dimming control that mounts directly to the pole. Wide 360° pattern. Module colors are available in Black, Gray, and White. Module is cut for round pole mounting. Pole diameter is needed upon order. Poles to be drilled in the field will be provided with installation instructions.

Ordering Example: SCH-R4⁴/277²/BL³

Square Pole-Mounted Occupancy Sensor 16' to 30'

SCH-S

Square Pole-Mounted Occupancy Sensor: 16 to 30' - an outdoor occupancy sensor with 0-10V interface dimming control that mounts directly to the pole. Wide 360° pattern. Module colors are available in Black, Gray, and White. Module is cut for round pole mounting. Pole diameter is needed upon order. Poles to be drilled in the field will be provided with installation instructions.

Ordering Example: SCH-S/277²/BL³

SCP

The SCP is a photo-control with motion sensing accessory that mounts to the side of any new or existing 3"-5" round or square straight pole. The SCP enables any pole mounted luminaire in excess of 75 watts, to meet California Title 24 requirements with integral 20KV/10KA surge protection for added reliability and serviceability.

For more detail:

http://www.aal.net/products/sensor_control_programmable

¹PRECOMMISSIONED SITESYNC ORDERING INFORMATION: When ordering a fixture with the SiteSync lighting control option, additional information will be required to complete the order. The SiteSync Commissioning Form or alternate schedule information must be completed. This form includes Project location, Group information, and Operating schedules. For more detailed information please visit www.HubbellLighting.com/products/sitesync or contact Hubbell Lighting tech support at (800) 345-4928.

SiteSync fixtures with occupancy sensor (SWPM) require the mounting height of the fixture for selection of the lens.

Examples:

SiteSync only : ALT3/P70/60L/3KUV/PS/US/SWP

SiteSync with Motion Control: ALT3/P70/60L/3KUV/PS/US/SWPM-20F

MOB ORDERING INFORMATION: When ordering a fixture with a dimming occupancy sensor option (MOB), please specify the appropriate information. These settings are specified in the ordering as shown in the example below.

ALT3/P70/60L/3KUV/PS/US/MOB - 1 to 30 min - 33%or 50% - ?? / DBT

High to Dim Delay Low Level Mounting Height (ft.)

²Voltage, ³Color, ⁴Pole Diameter

Kim Lighting reserves the right to change specifications without notice.

H

DJ

HOOKER DE JONG
Architects & Engineers
316 Morris Avenue
Studio Suite 410
Muskegon, MI 49440
P 231.722.1340
F 231.722.1258

MULTI-FAMILY HOUSING
THE MEADOWLANDS
MADISON, WI
KGC HOUSING DEVELOPMENT

Project Number 4-1125

ISSUANCE	No.	Date	Description
	1	2019.05.28	SITE PLAN REVIEW
	2	2019.06.11	SITE PLAN REVIEW

NOT FOR CONSTRUCTION

Copyright © 2019 HDJ Inc. All Rights Reserved

EXTERIOR ELEVATIONS

A4.1

ELEVATION KEYNOTES

- HORIZONTAL FIBER CEMENT SIDING - COLOR 1
- HORIZONTAL FIBER CEMENT SIDING - COLOR 2
- FIBER CEMENT PANEL
- FIBER CEMENT TRIM
- STONE VENEER
- CAST STONE SILL
- VINYL WINDOW WITH FIBER CEMENT TRIM
- FIBERGLASS DOOR
- BALCONY CANOPY COLUMN WITH STONE VENEER
- BALCONY CANOPY COLUMN WITH FIBER CEMENT WRAP
- FIBER CEMENT FASCIA
- MECHANICAL UNIT
- DECORATIVE LIGHT FIXTURE
- COMPOSITE CORSEL
- BALCONY STRUCTURE WITH FIBER CEMENT TRIM
- PAINTED METAL GUARDRAIL
- ALUMINUM STOREFRONT SYSTEM
- BUILDING SIGNAGE
- ALUMINUM GUTTER AND DOWNSPOUTS
- MECHANICAL PENETRATION
- ASPHALT SHINGLES
- INSULATED GARAGE DOOR

GENERAL ELEVATION NOTES

- MECHANICAL PENETRATIONS AT 3 AND 4 STORY BUILDINGS TO EXTEND THROUGH ROOF, BELOW PARAPET LEVEL



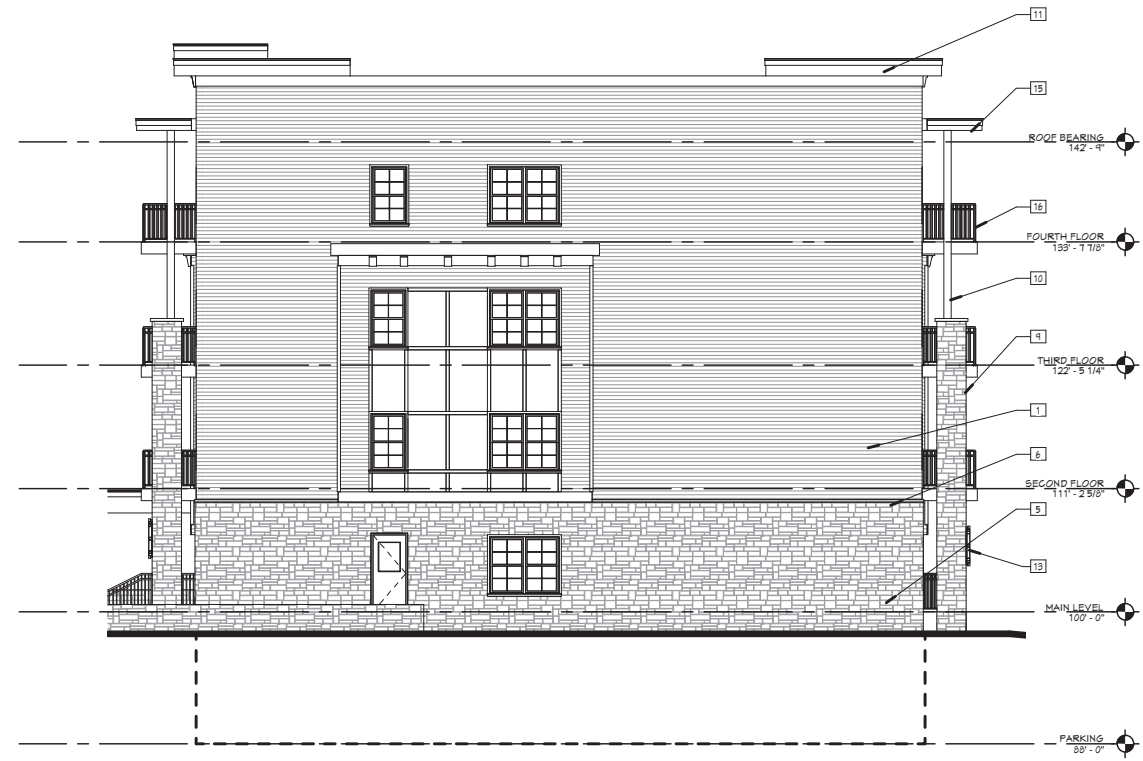
2 BUILDING 1 - WEST ELEVATION (BLDG 2 SIM)
A4.1 1/8" = 1'-0"



1 BUILDING 1 - SOUTH ELEVATION (BLDG 2 SIM)
A4.1 1/8" = 1'-0"



2 BUILDING 1 - EAST ELEVATION (BLDG 2 SIM)
A4.2 1/8" = 1'-0"



1 BUILDING 1 - NORTH ELEVATION (BLDG 2 SIM)
A4.2 1/8" = 1'-0"

ELEVATION KEYNOTES

1. HORIZONTAL FIBER CEMENT SIDING - COLOR 1
2. HORIZONTAL FIBER CEMENT SIDING - COLOR 2
3. FIBER CEMENT PANEL
4. FIBER CEMENT TRIM
5. STONE VENEER
6. CAST STONE SILL
7. VINYL WINDOW WITH FIBER CEMENT TRIM
8. FIBERGLASS DOOR
9. BALCONY CANOPY COLUMN WITH STONE VENEER
10. BALCONY CANOPY COLUMN WITH FIBER CEMENT WRAP
11. FIBER CEMENT FASCIA
12. MECHANICAL UNIT
13. DECORATIVE LIGHT FIXTURE
14. COMPOSITE CORBEL
15. BALCONY STRUCTURE WITH FIBER CEMENT TRIM
16. PAINTED METAL GUARDRAIL
17. ALUMINUM STOREFRONT SYSTEM
18. BUILDING SIGNAGE
19. ALUMINUM GUTTER AND DOWNSPOUTS
20. MECHANICAL PENETRATION
21. ASPHALT SHINGLES
22. INSULATED GARAGE DOOR

GENERAL ELEVATION NOTES

1. MECHANICAL PENETRATIONS AT 3 AND 4 STORY BUILDINGS TO EXTEND THROUGH ROOF, BELOW PARAPET LEVEL

H

DJ

HOOKER DE JONG
Architects & Engineers
316 Morris Avenue
Studio Suite 410
Muskegon, MI 49440
P 231.722.1340
F 231.722.1258

MULTI-FAMILY HOUSING
THE MEADOWLANDS
MADISON, WI
KGC HOUSING DEVELOPMENT

Project Number		4-1125
ISSUANCE		
No.	Date	Description
1	2019.05.28	SITE PLAN REVIEW
2	2019.06.11	SITE PLAN REVIEW

NOT FOR
CONSTRUCTION

Copyright © 2019 HDJ Inc. All Rights Reserved

EXTERIOR
ELEVATIONS

A4.2

H

DJ

HOOKER | DE JONG
Architects & Engineers
316 Morris Avenue
Studio Suite 410
Muskegon, MI 49440
P 231.722.13407
F 231.722.12589

MULTI-FAMILY HOUSING
THE MEADOWLANDS
MADISON, WI
KGC HOUSING DEVELOPMENT

Project Number	4-1125	
ISSUANCE		
No.	Date	Description
1	2019.05.28	SITE PLAN REVIEW
2	2019.06.11	SITE PLAN REVIEW

NOT FOR CONSTRUCTION

Copyright © 2019 HDJ Inc. All Rights Reserved

EXTERIOR ELEVATIONS

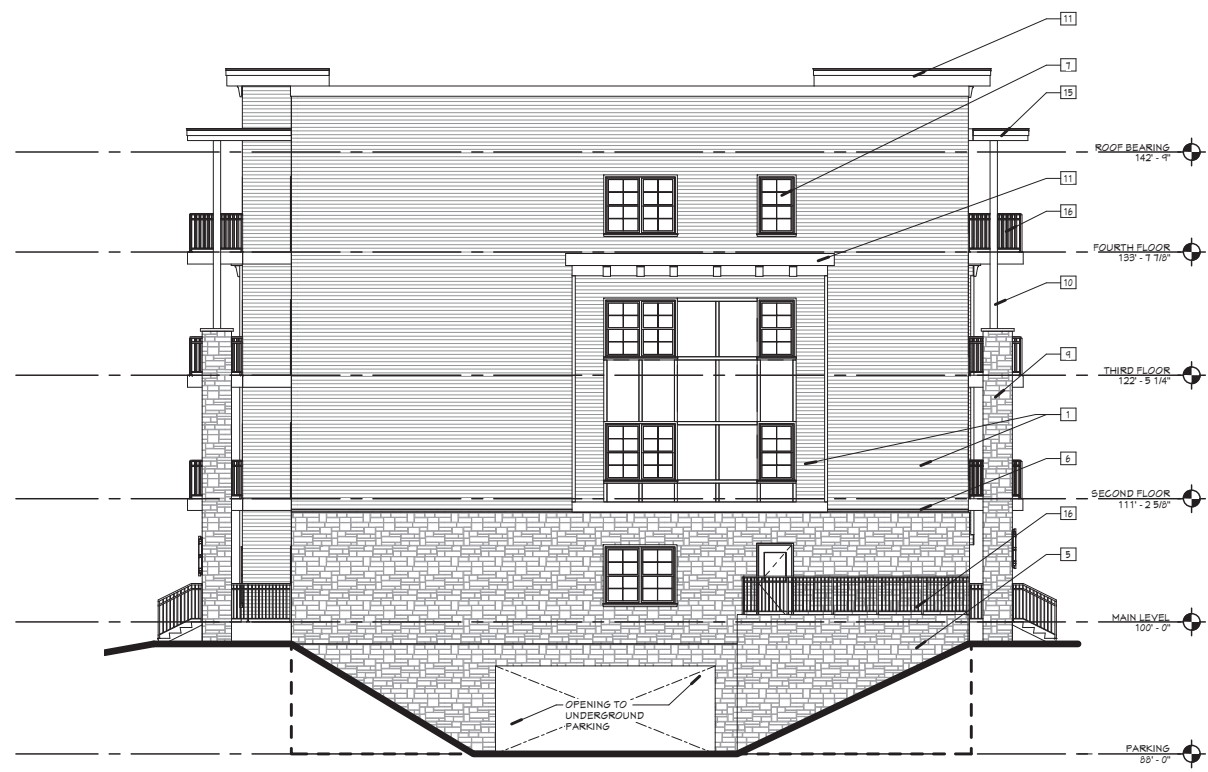
A4.3

ELEVATION KEYNOTES

- HORIZONTAL FIBER CEMENT SIDING - COLOR 1
- HORIZONTAL FIBER CEMENT SIDING - COLOR 2
- FIBER CEMENT PANEL
- FIBER CEMENT TRIM
- STONE VENEER
- CAST STONE SILL
- VINYL WINDOW WITH FIBER CEMENT TRIM
- FIBERGLASS DOOR
- BALCONY/ CANOPY COLUMN WITH STONE VENEER
- BALCONY/ CANOPY COLUMN WITH FIBER CEMENT WRAP
- FIBER CEMENT FASCIA
- MECHANICAL UNIT
- PAINTED METAL GUARDRAIL
- DECORATIVE LIGHT FIXTURE
- COMPOSITE CORBEL
- BALCONY STRUCTURE WITH FIBER CEMENT TRIM
- ALUMINUM STOREFRONT SYSTEM
- BUILDING SIGNAGE
- ALUMINUM GUTTER AND DOWNSPOUTS
- MECHANICAL PENETRATION
- ASPHALT SHINGLES
- INSULATED GARAGE DOOR

GENERAL ELEVATION NOTES

- MECHANICAL PENETRATIONS AT 3 AND 4 STORY BUILDINGS TO EXTEND THROUGH ROOF, BELOW PARAPET LEVEL



2 BUILDING 1 - EAST ELEVATION (BLDG 2 SIM)
A4.3 1/8" = 1'-0"



1 BUILDING 1 - NORTH ELEVATION (BLDG 2 SIM)
A4.3 1/8" = 1'-0"

H

DJ

HOOKER | DE JONG
Architects & Engineers
316 Morris Avenue
Studio Suite 410
Muskegon, MI 49440
P 231.722.13407
F 231.722.12589

MULTI-FAMILY HOUSING
THE MEADOWLANDS
MADISON, WI
KGC HOUSING DEVELOPMENT

Project Number 4-1125

ISSUANCE	No.	Date	Description
1	2019.05.28	SITE PLAN REVIEW	

NOT FOR CONSTRUCTION

Copyright © 2019 HDJ Inc. All Rights Reserved

EXTERIOR ELEVATIONS

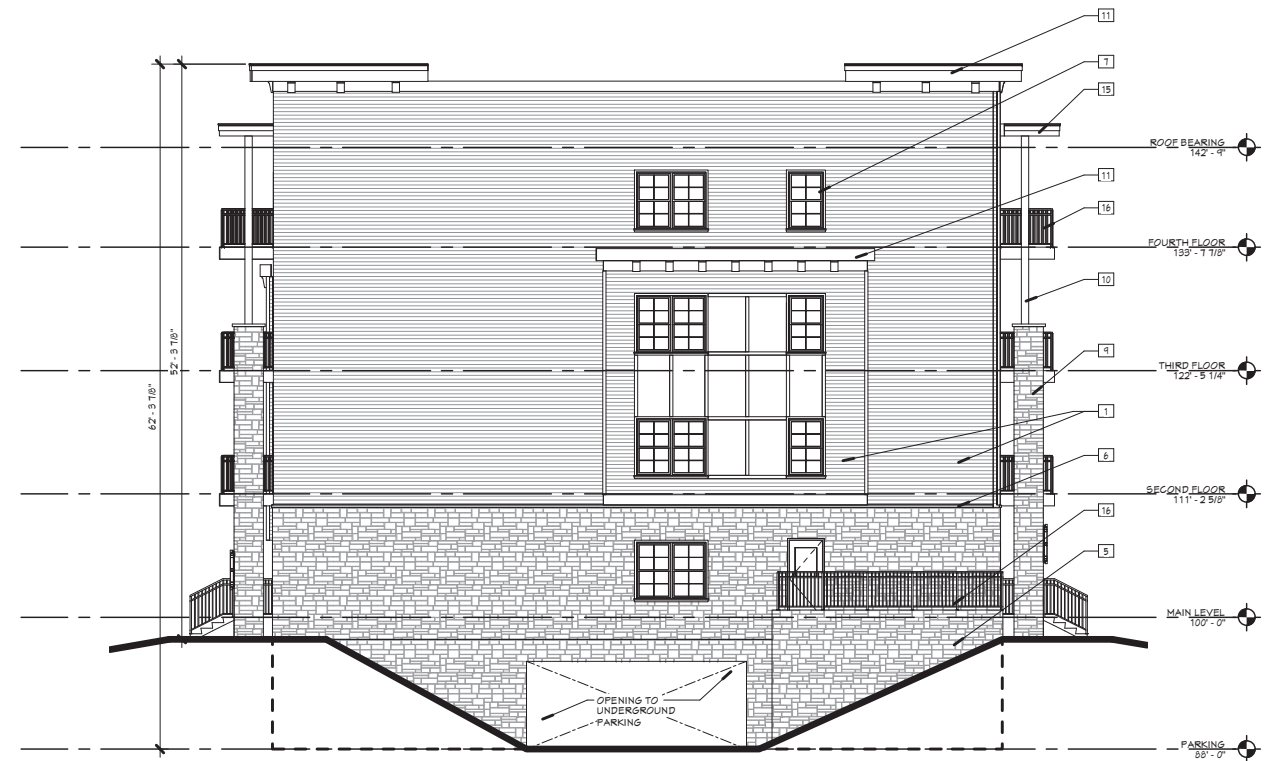
A4.4

ELEVATION KEYNOTES

- HORIZONTAL FIBER CEMENT SIDING - COLOR 1
- HORIZONTAL FIBER CEMENT SIDING - COLOR 2
- FIBER CEMENT PANEL
- FIBER CEMENT TRIM
- STONE VENEER
- CAST STONE SILL
- VINYL WINDOW WITH FIBER CEMENT TRIM
- FIBERGLASS DOOR
- BALCONY CANOPY COLUMN WITH STONE VENEER
- BALCONY CANOPY COLUMN WITH FIBER CEMENT WRAP
- FIBER CEMENT FASCIA
- MECHANICAL UNIT
- DECORATIVE LIGHT FIXTURE
- COMPOSITE CORBEL
- BALCONY STRUCTURE WITH FIBER CEMENT TRIM
- PAINTED METAL GUARDRAIL
- ALUMINUM STOREFRONT SYSTEM
- BUILDING SIGNAGE
- ALUMINUM GUTTER AND DOWNSPOUTS
- MECHANICAL PENETRATION
- ASPHALT SHINGLES
- INSULATED GARAGE DOOR

GENERAL ELEVATION NOTES

- MECHANICAL PENETRATIONS AT 3 AND 4 STORY BUILDINGS TO EXTEND THROUGH ROOF, BELOW PARAPET LEVEL



1 BUILDING 3 - SOUTH ELEVATION
A4.4 1/8" = 1'-0"



2 BUILDING 3 - WEST ELEVATION
A4.4 1/8" = 1'-0"

H

DJ

HOOKER DE JONG
Architects & Engineers
316 Morris Avenue
Studio Suite 410
Muskegon, MI 49440
P 231.722.1340
F 231.722.1258

MULTI-FAMILY HOUSING
THE MEADOWLANDS
MADISON, WI
KGC HOUSING DEVELOPMENT

Project Number 4-1125

ISSUANCE		
No.	Date	Description
1	2019.05.28	SITE PLAN REVIEW

NOT FOR CONSTRUCTION

Copyright © 2019 HDJ Inc. All Rights Reserved

EXTERIOR ELEVATIONS

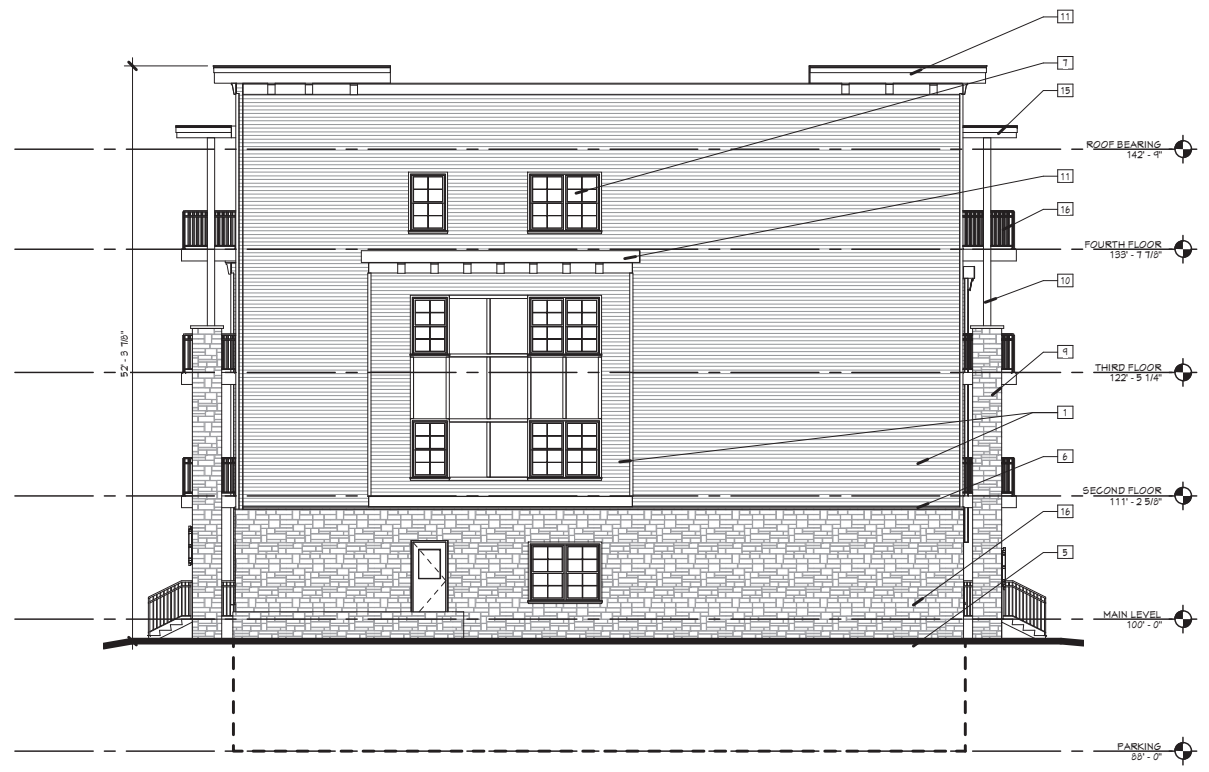
A4.5

ELEVATION KEYNOTES

- HORIZONTAL FIBER CEMENT SIDING - COLOR 1
- HORIZONTAL FIBER CEMENT SIDING - COLOR 2
- FIBER CEMENT PANEL
- FIBER CEMENT TRIM
- STONE VENEER
- CAST STONE SILL
- VINYL WINDOW WITH FIBER CEMENT TRIM
- FIBERGLASS DOOR
- BALCONY CANOPY COLUMN WITH STONE VENEER
- BALCONY CANOPY COLUMN WITH FIBER CEMENT WRAP
- FIBER CEMENT FASCIA
- MECHANICAL UNIT
- DECORATIVE LIGHT FIXTURE
- COMPOSITE CORSEL
- BALCONY STRUCTURE WITH FIBER CEMENT TRIM
- PAINTED METAL GUARDRAIL
- ALUMINUM STOREFRONT SYSTEM
- BUILDING SIGNAGE
- ALUMINUM GUTTER AND DOWNSPOUTS
- MECHANICAL PENETRATION
- ASPHALT SHINGLES
- INSULATED GARAGE DOOR

GENERAL ELEVATION NOTES

- MECHANICAL PENETRATIONS AT 3 AND 4 STORY BUILDINGS TO EXTEND THROUGH ROOF, BELOW PARAPET LEVEL



2 BUILDING 3 - NORTH ELEVATION
A4.5 1/8" = 1'-0"



1 BUILDING 3 - EAST ELEVATION
A4.5 1/8" = 1'-0"

H

DJ

HOOKER DE JONG
Architects & Engineers
316 Morris Avenue
Studio Suite 410
Muskegon, MI 49440
P 231.722.13407
F 231.722.12589

MULTI-FAMILY HOUSING
THE MEADOWLANDS
MADISON, WI

KGC HOUSING DEVELOPMENT

Project Number **4-1125**

ISSUANCE		
No.	Date	Description
1	2019.05.28	SITE PLAN REVIEW

NOT FOR
CONSTRUCTION

Copyright © 2019 HDJ Inc. All Rights Reserved

EXTERIOR
ELEVATIONS

A4.6

ELEVATION KEYNOTES

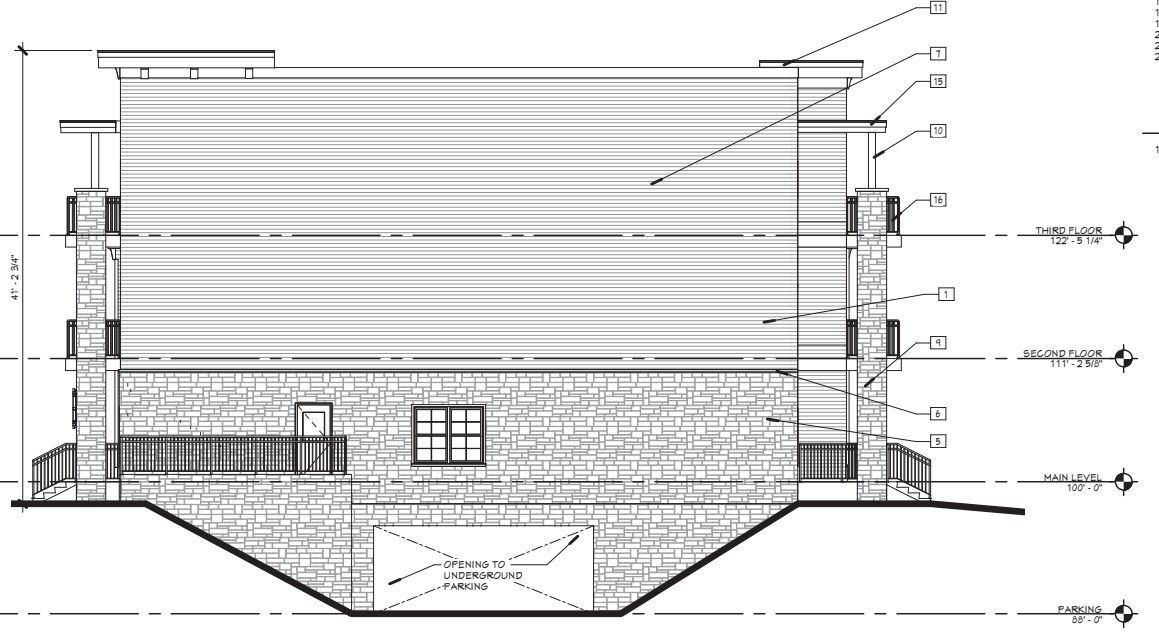
1. HORIZONTAL FIBER CEMENT SIDING - COLOR 1
2. HORIZONTAL FIBER CEMENT SIDING - COLOR 2
3. FIBER CEMENT PANEL
4. FIBER CEMENT TRIM
5. STONE VENEER
6. CAST STONE SILL
7. VINYL WINDOW WITH FIBER CEMENT TRIM
8. FIBERGLASS DOOR
9. BALCONY CANOPY COLUMN WITH STONE VENEER
10. BALCONY CANOPY COLUMN WITH FIBER CEMENT WRAP
11. FIBER CEMENT FASCIA
12. MECHANICAL UNIT
13. DECORATIVE LIGHT FIXTURE
14. COMPOSITE CORBEL
15. BALCONY STRUCTURE WITH FIBER CEMENT TRIM
16. PAINTED METAL GUARDRAIL
17. ALUMINUM STOREFRONT SYSTEM
18. BUILDING SIGNAGE
19. ALUMINUM GUTTER AND DOWNSPOUTS
20. MECHANICAL PENETRATION
21. ASPHALT SHINGLES
22. INSULATED GARAGE DOOR

**GENERAL
ELEVATION NOTES**

1. MECHANICAL PENETRATIONS AT 3 AND 4 STORY BUILDINGS TO EXTEND THROUGH ROOF, BELOW PARAPET LEVEL



3 BUILDING 4 - NORTH ELEVATION
A4.6 1/8" = 1'-0"



2 BUILDING 4 - WEST ELEVATION
A4.6 1/8" = 1'-0"



1 BUILDING 4 - SOUTH ELEVATION
A4.6 1/8" = 1'-0"

H

DJ

HOOKER | DE JONG
Architects & Engineers
316 Morris Avenue
Studio Suite 410
Muskegon, MI 49440
P 231.722.1340
F 231.722.1258

MULTI-FAMILY HOUSING
THE MEADOWLANDS
MADISON, WI
KGC HOUSING DEVELOPMENT

Project Number 4-1125

ISSUANCE		
No.	Date	Description
1	2019.05.28	SITE PLAN REVIEW

NOT FOR CONSTRUCTION

Copyright © 2019 HDJ Inc. All Rights Reserved

EXTERIOR ELEVATIONS

A4.7

ELEVATION KEYNOTES

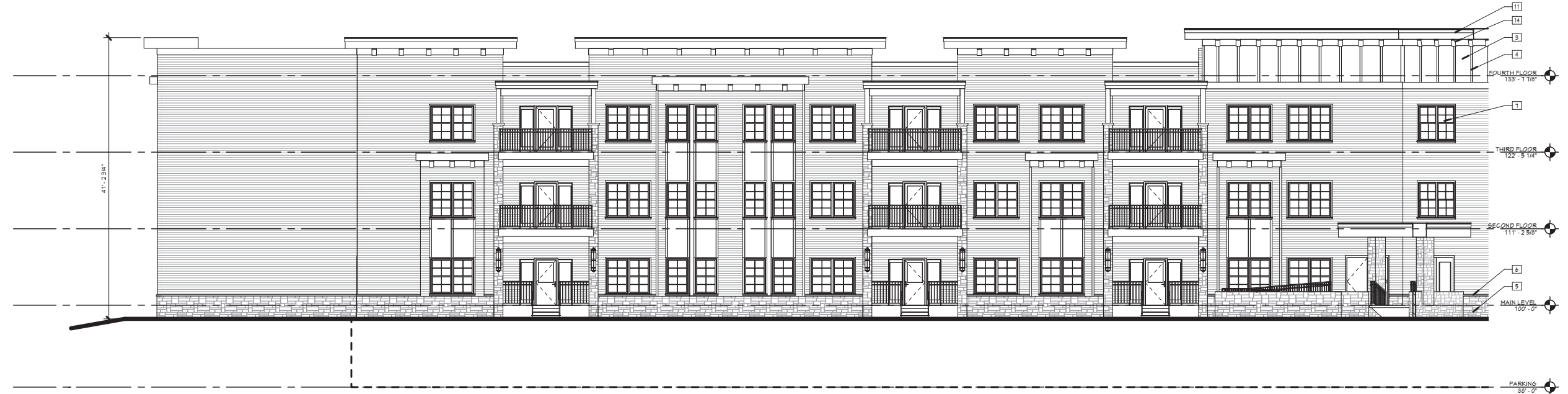
1. HORIZONTAL FIBER CEMENT SIDING - COLOR 1
2. HORIZONTAL FIBER CEMENT SIDING - COLOR 2
3. FIBER CEMENT PANEL
4. FIBER CEMENT TRIM
5. STONE VENEER
6. CAST STONE SILL
7. VINYL WINDOW WITH FIBER CEMENT TRIM
8. FIBERGLASS DOOR
9. BALCONY CANOPY COLUMN WITH STONE VENEER
10. BALCONY CANOPY COLUMN WITH FIBER CEMENT WRAP
11. FIBER CEMENT FASCIA
12. MECHANICAL UNIT
13. DECORATIVE LIGHT FIXTURE
14. COMPOSITE CORSEL
15. BALCONY STRUCTURE WITH FIBER CEMENT TRIM
16. PAINTED METAL GUARDRAIL
17. ALUMINUM STOREFRONT SYSTEM
18. BUILDING SIGNAGE
19. ALUMINUM GUTTER AND DOWNSPOUTS
20. MECHANICAL PENETRATION
21. ASPHALT SHINGLES
22. INSULATED GARAGE DOOR

GENERAL ELEVATION NOTES

1. MECHANICAL PENETRATIONS AT 3 AND 4 STORY BUILDINGS TO EXTEND THROUGH ROOF, BELOW PARAPET LEVEL



2 BUILDING 4 - NORTHWEST ELEVATION
A4.7 1/8" = 1'-0"



1 BUILDING 4 - SOUTHWEST ELEVATION
A4.7 1/8" = 1'-0"

H

DJ

HOOKER | DE JONG
Architects & Engineers
316 Morris Avenue
Studio Suite 410
Muskegon, MI 49440
P 231.722.1340
F 231.722.1258

MULTI-FAMILY HOUSING
THE MEADOWLANDS
MADISON, WI
KGC HOUSING DEVELOPMENT

Project Number **4-1125**

ISSUANCE		
No.	Date	Description
1	2019.05.28	SITE PLAN REVIEW

NOT FOR CONSTRUCTION

Copyright © 2019 HDJ Inc. All Rights Reserved

EXTERIOR ELEVATIONS

A4.8

ELEVATION KEYNOTES

1. HORIZONTAL FIBER CEMENT SIDING - COLOR 1
2. HORIZONTAL FIBER CEMENT SIDING - COLOR 2
3. FIBER CEMENT PANEL
4. FIBER CEMENT TRIM
5. STONE VENEER
6. CAST STONE SILL
7. VINYL WINDOW WITH FIBER CEMENT TRIM
8. FIBERGLASS DOOR
9. BALCONY CANOPY COLUMN WITH STONE VENEER
10. BALCONY CANOPY COLUMN WITH FIBER CEMENT WRAP
11. FIBER CEMENT FASCIA
12. MECHANICAL UNIT
13. DECORATIVE LIGHT FIXTURE
14. COMPOSITE CORBEL
15. BALCONY STRUCTURE WITH FIBER CEMENT TRIM
16. PAINTED METAL GUARDRAIL
17. ALUMINUM STOREFRONT SYSTEM
18. BUILDING SIGNAGE
19. ALUMINUM GUTTER AND DOWNSPOUTS
20. MECHANICAL PENETRATION
21. ASPHALT SHINGLES
22. INSULATED GARAGE DOOR

GENERAL ELEVATION NOTES

1. MECHANICAL PENETRATIONS AT 3 AND 4 STORY BUILDINGS TO EXTEND THROUGH ROOF, BELOW PARAPET LEVEL



2 BUILDING 4 - EAST ELEVATION
A4.8 1/8" = 1'-0"



1 BUILDING 4 - NORTHEAST ELEVATION
A4.8 1/8" = 1'-0"

ELEVATION KEYNOTES

1. HORIZONTAL FIBER CEMENT SIDING - COLOR 1
2. HORIZONTAL FIBER CEMENT SIDING - COLOR 2
3. FIBER CEMENT PANEL
4. FIBER CEMENT TRIM
5. STONE VENEER
6. CAST STONE SILL
7. VINYL WINDOW WITH FIBER CEMENT TRIM
8. FIBERGLASS DOOR
9. BALCONY CANOPY COLUMN WITH STONE VENEER
10. BALCONY CANOPY COLUMN WITH FIBER CEMENT WRAP
11. FIBER CEMENT FASCIA
12. MECHANICAL UNIT
13. DECORATIVE LIGHT FIXTURE
14. COMPOSITE CORBEL
15. BALCONY STRUCTURE WITH FIBER CEMENT TRIM
16. PAINTED METAL GUARDRAIL
17. ALUMINUM STOREFRONT SYSTEM
18. BUILDING SIGNAGE
19. ALUMINUM GUTTER AND DOWNSPOUTS
20. MECHANICAL PENETRATION
21. ASPHALT SHINGLES
22. INSULATED GARAGE DOOR

GENERAL ELEVATION NOTES

1. MECHANICAL PENETRATIONS AT 3 AND 4 STORY BUILDINGS TO EXTEND THROUGH ROOF, BELOW PARAPET LEVEL

H

DJ

HOOKER DE JONG
Architects & Engineers
316 Morris Avenue
Studio Suite 410
Muskegon, MI 49440
P 231.722.13407
F 231.722.12589

MULTI-FAMILY HOUSING
THE MEADOWLANDS
MADISON, WI
KGC HOUSING DEVELOPMENT

Project Number **4-1125**

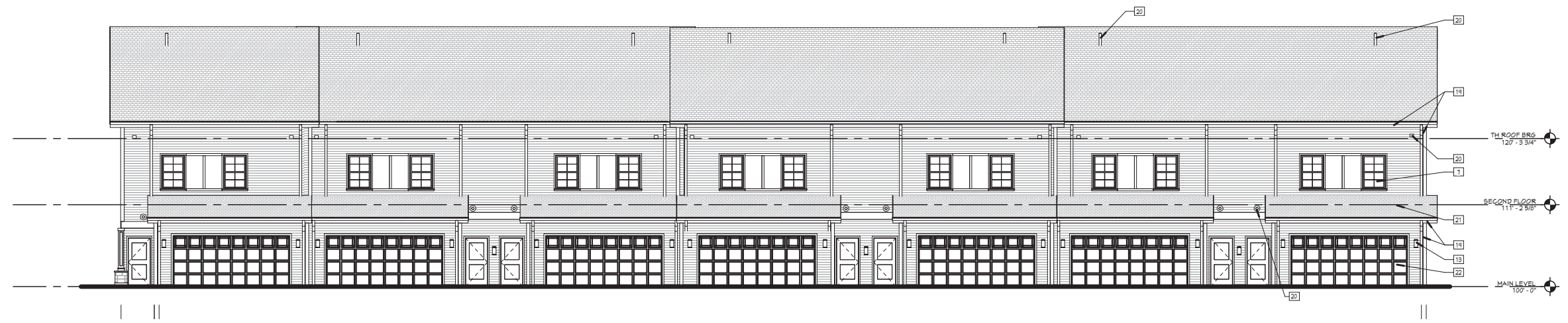
ISSUANCE		
No.	Date	Description
1	2019.05.28	SITE PLAN REVIEW

NOT FOR CONSTRUCTION

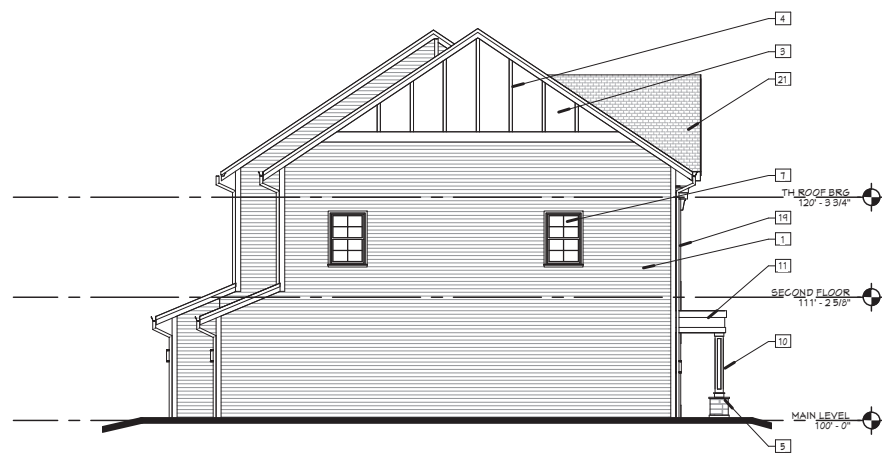
Copyright © 2019 HDJ Inc. All Rights Reserved

EXTERIOR ELEVATIONS

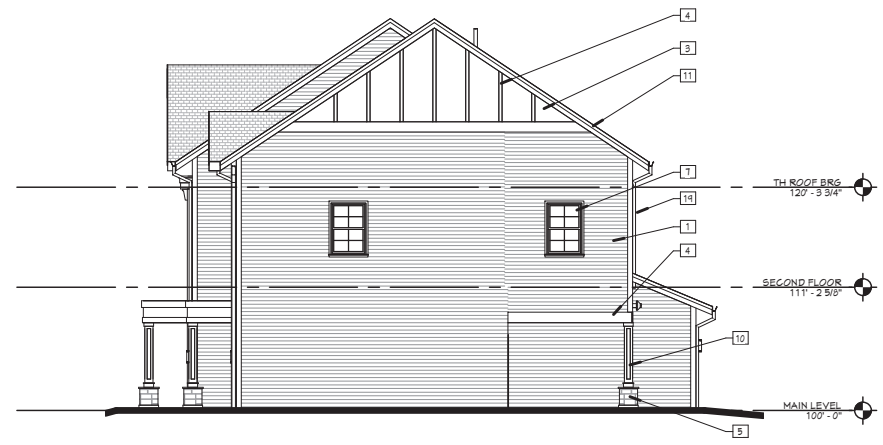
A4.9



4 BUILDING 5 - EAST ELEVATION
A4.9 1/8" = 1'-0"



3 BUILDING 5 - NORTH ELEVATION
A4.9 1/8" = 1'-0"



2 BUILDING 5 - SOUTH ELEVATION
A4.9 1/8" = 1'-0"



1 BUILDING 5 - WEST ELEVATION
A4.9 1/8" = 1'-0"