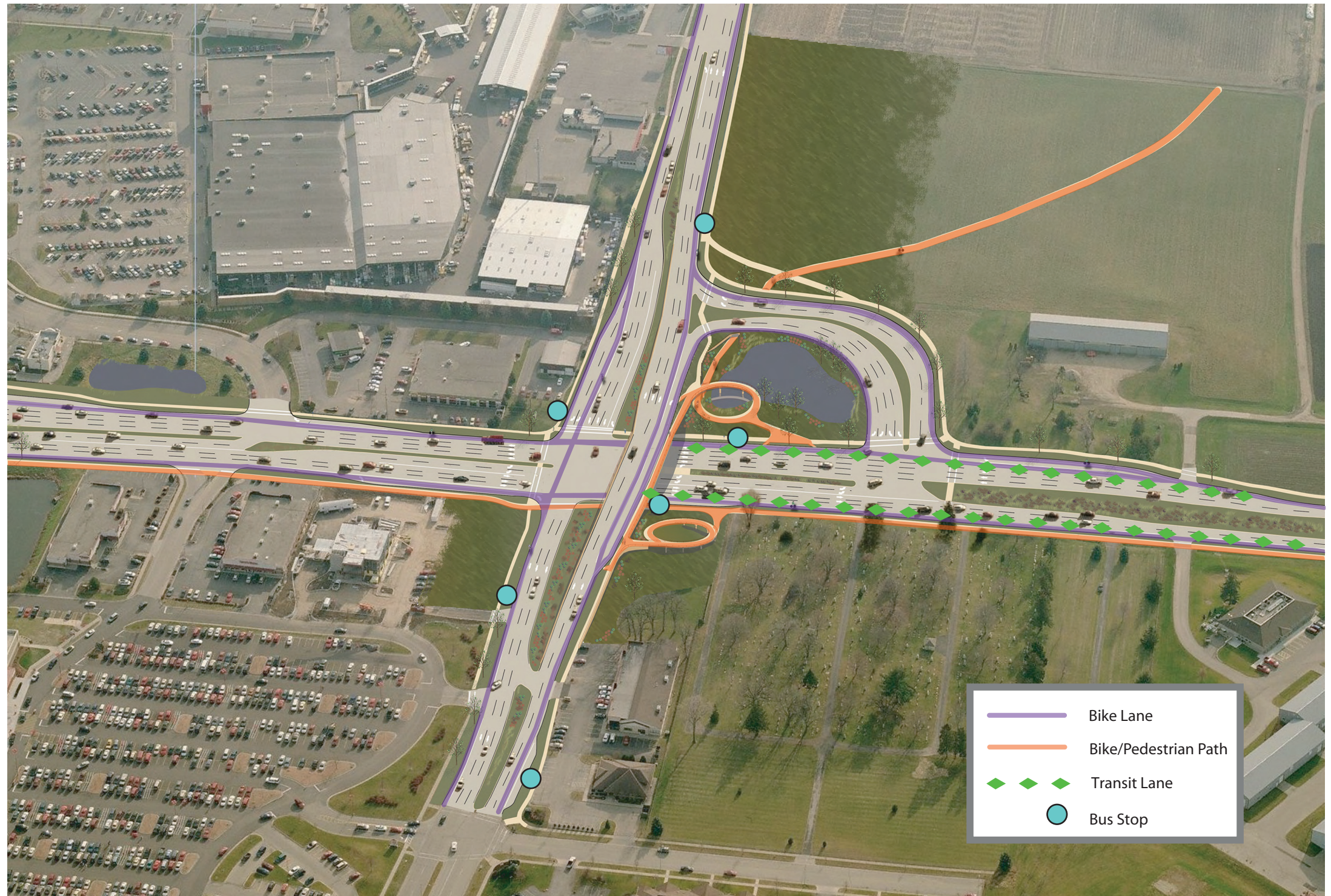


# Mineral Point Junction ROADS

- Provides a safe and convenient intersection for all users, including pedestrians, bicyclists, and motor vehicles
- Provides acceptable operating conditions for existing and future traffic volumes
- Accommodates future planned growth in the area
- Provides a well-designed intersection that minimizes impacts to adjacent properties



**HNTB**

Modified Quadrant Grade Separated Intersection