

**Time:** 5/9/2018 11:19:44 AM

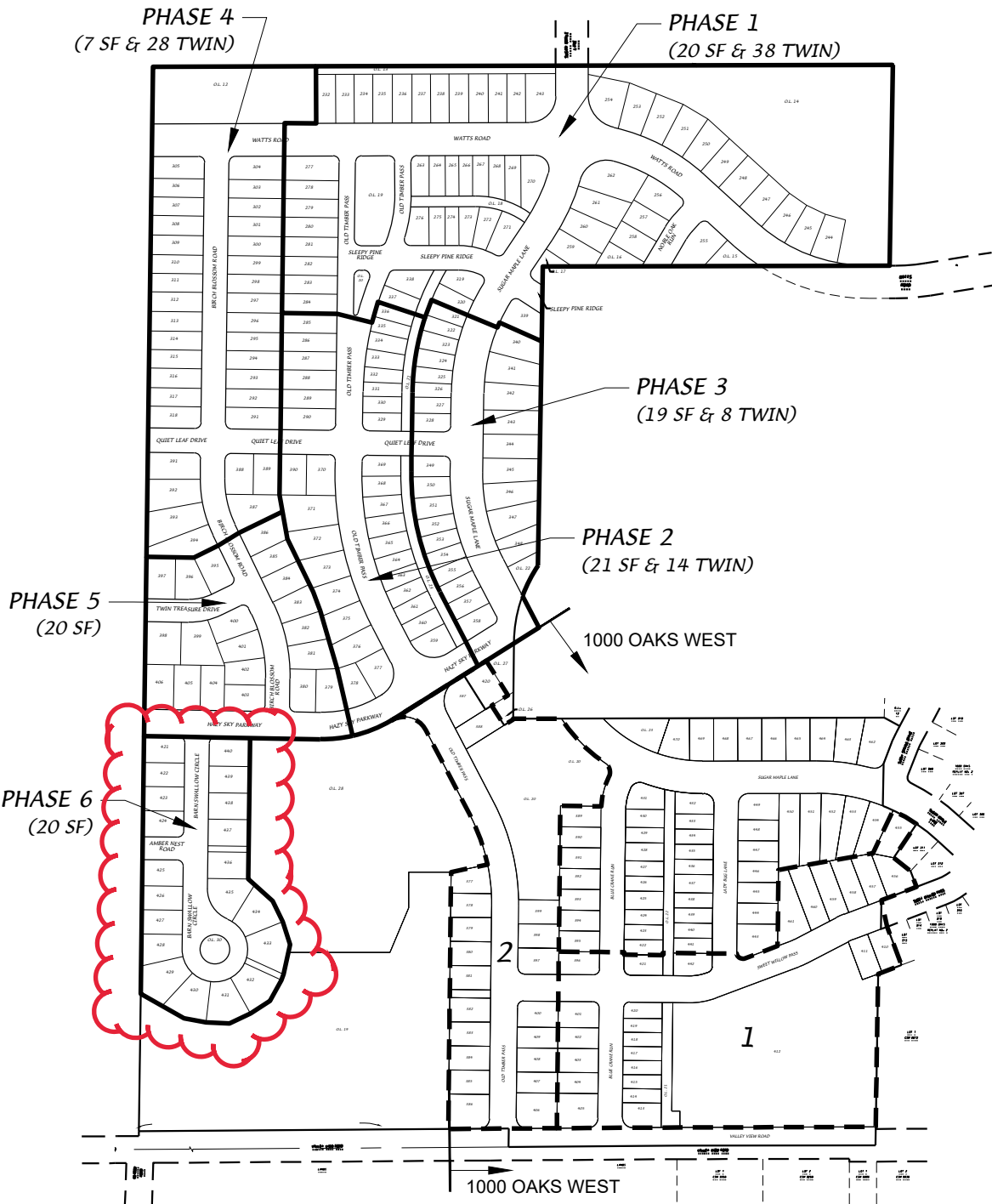
**Session:** C:\GTViewer\_Sessions\Deming & Fourier SW.gts

**City of Madison, WI - GIS/Mapping data**

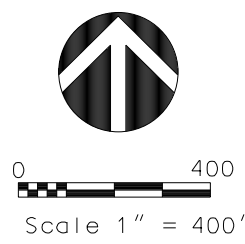
Printed By: entnt

Disclaimer: The City makes no representation about the accuracy of these records and shall not be liable for any damages

# Birchwood Point South - Phase Map

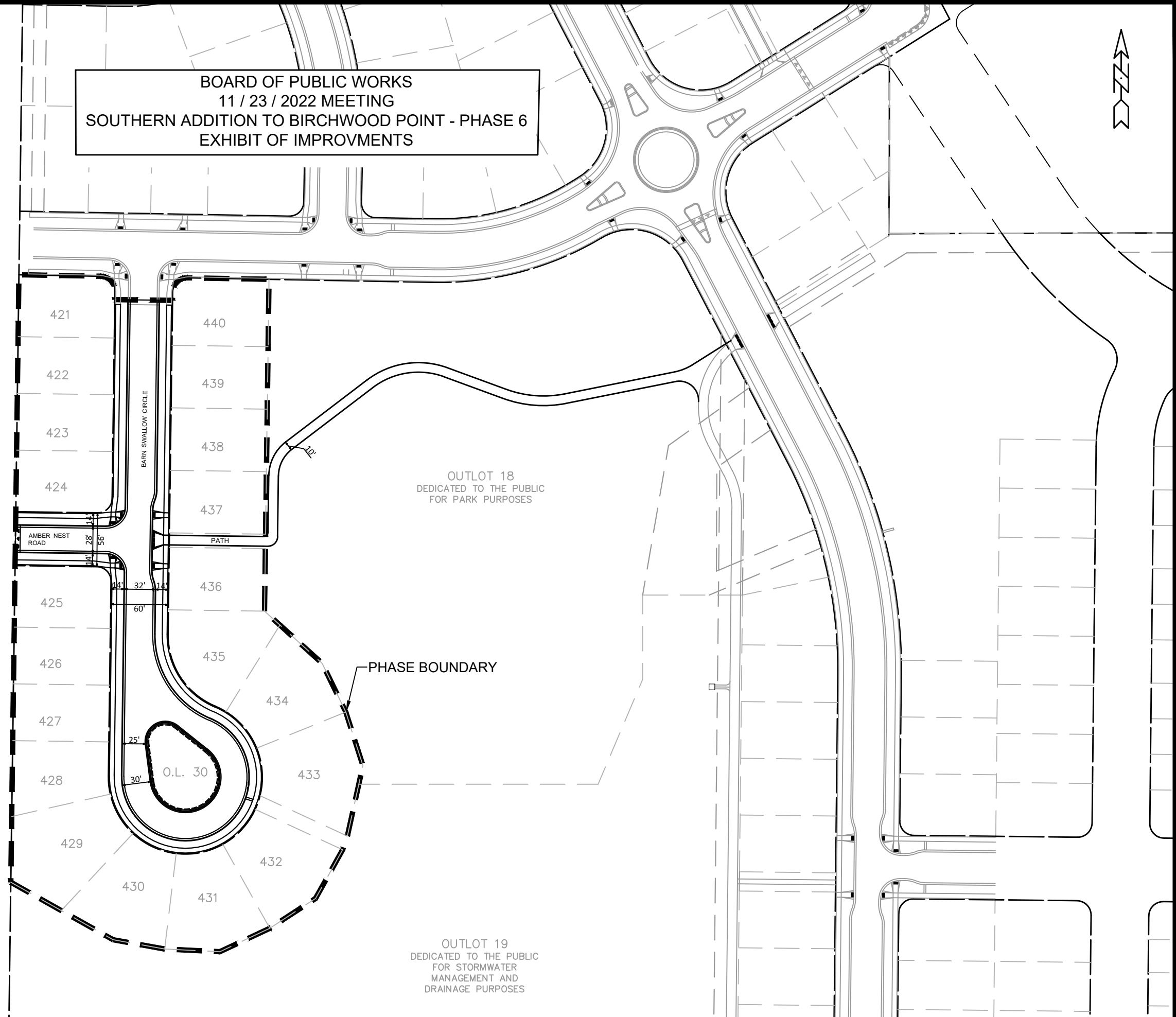


**D'ONOFRIO KOTTKE AND ASSOCIATES, INC.**  
 7530 Westward Way, Madison, WI 53717  
 Phone: 608.833.7530 • Fax: 608.833.1089  
 YOUR NATURAL RESOURCE FOR LAND DEVELOPMENT



DATE: 08-03-22  
 REV.:  
 F.N.: 20-05-146  
 DRAWN BY: ATF

BOARD OF PUBLIC WORKS  
 11 / 23 / 2022 MEETING  
 SOUTHERN ADDITION TO BIRCHWOOD POINT - PHASE 6  
 EXHIBIT OF IMPROVMENTS



OUTLOT 18  
 DEDICATED TO THE PUBLIC  
 FOR PARK PURPOSES

PHASE BOUNDARY

OUTLOT 19  
 DEDICATED TO THE PUBLIC  
 FOR STORMWATER  
 MANAGEMENT AND  
 DRAINAGE PURPOSES

MARK	REVISION	DATE	BY
###	###	###	###
###	###	###	###
###	###	###	###
###	###	###	###

13852  
 MADISON, WI  
 CONTRACT NO: 9217

BOARD OF PUBLIC WORKS EXHIBIT  
 SOUTHERN ADDITION TO BIRCHWOOD POINT PHASE 6  
 M:\DESIGN\Projects\14343\CAD\Streets\14343EN-Street\Network.dwg



14343  
 BPW