

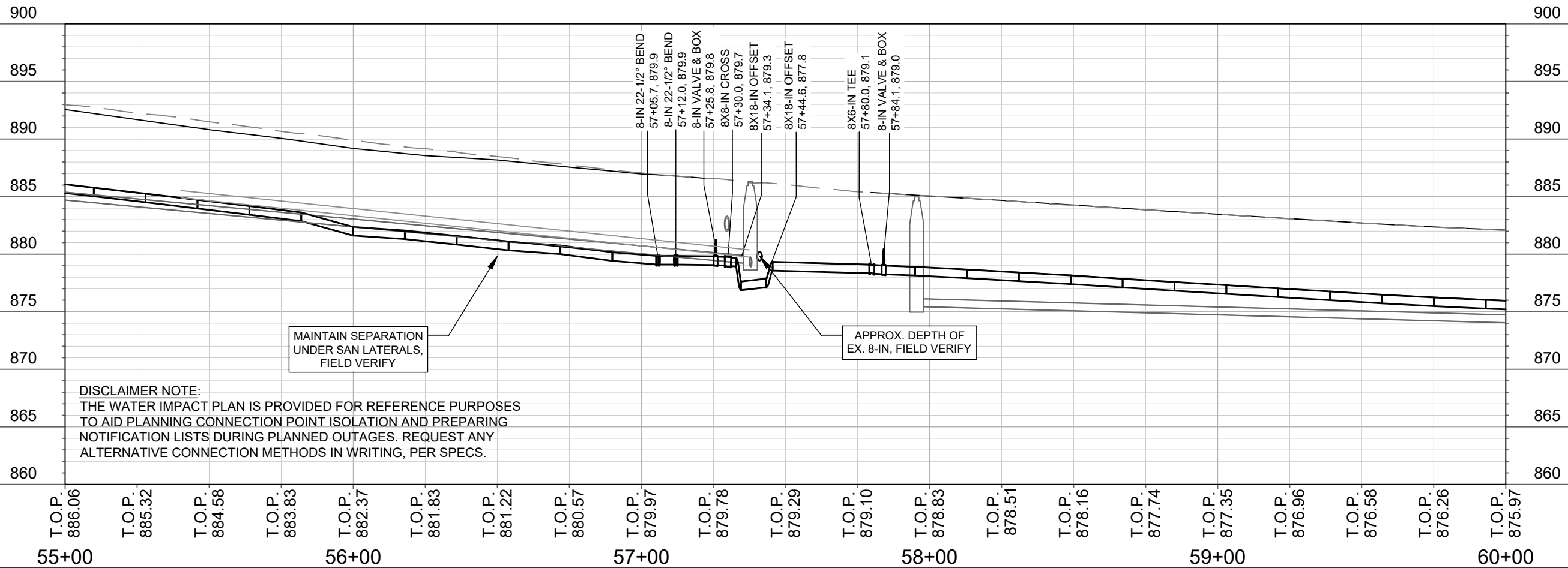
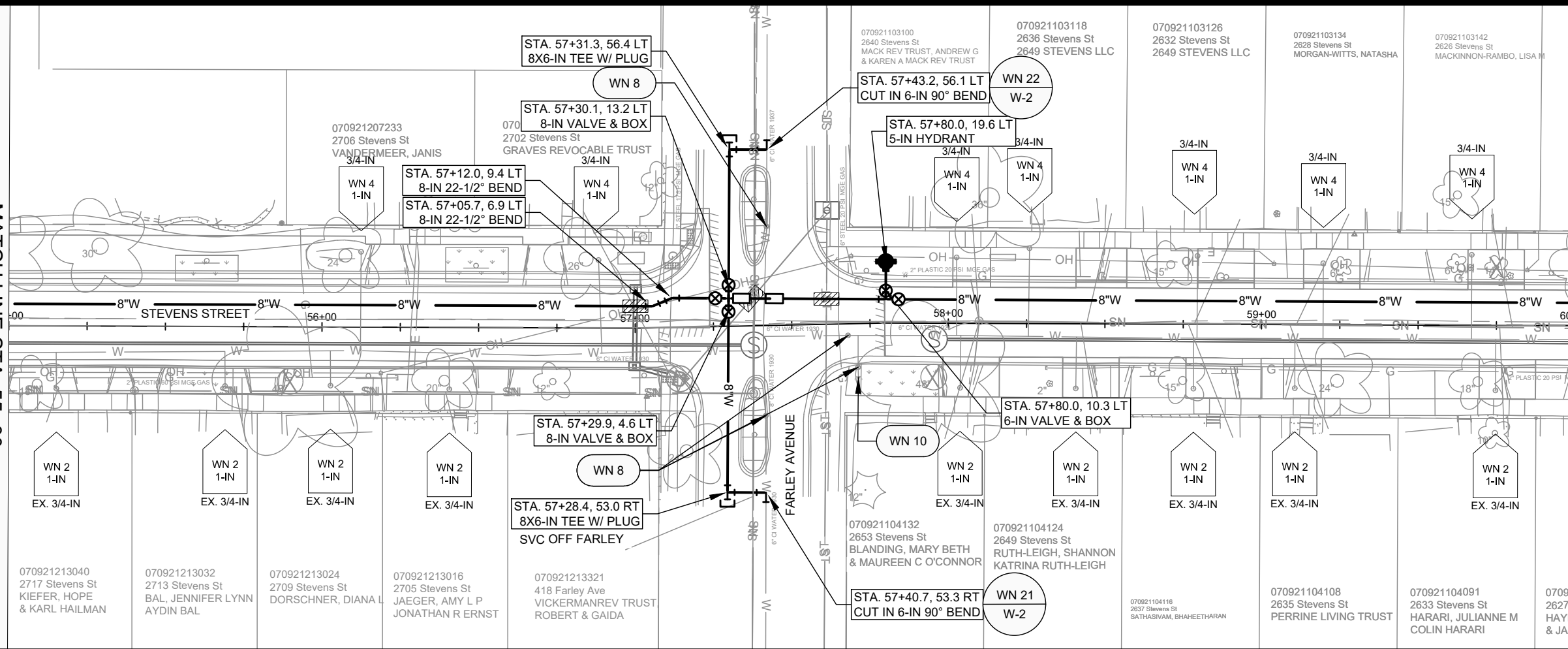
DISCLAIMER NOTE:
 THE WATER IMPACT PLAN IS PROVIDED FOR REFERENCE PURPOSES TO AID PLANNING CONNECTION POINT ISOLATION AND PREPARING NOTIFICATION LISTS DURING PLANNED OUTAGES. REQUEST ANY ALTERNATIVE CONNECTION METHODS IN WRITING, PER SPECS.

MATCHLINE STA. 55+00

14764	MADISON, WI	8745	CONTRACT NO.:
STEVENS STREET WATER PLAN AND PROFILE			
STEVENS STREET ASSESSMENT DISTRICT - 2024			
M:\DESIGN\Projects\14764\CAD\Water\14764WU-Water Stevens.dwg			
14764		W-1	

MATCH LINE STA. 55+00

MATCH LINE STA. 60+00



DISCLAIMER NOTE:
 THE WATER IMPACT PLAN IS PROVIDED FOR REFERENCE PURPOSES TO AID PLANNING CONNECTION POINT ISOLATION AND PREPARING NOTIFICATION LISTS DURING PLANNED OUTAGES. REQUEST ANY ALTERNATIVE CONNECTION METHODS IN WRITING, PER SPECS.

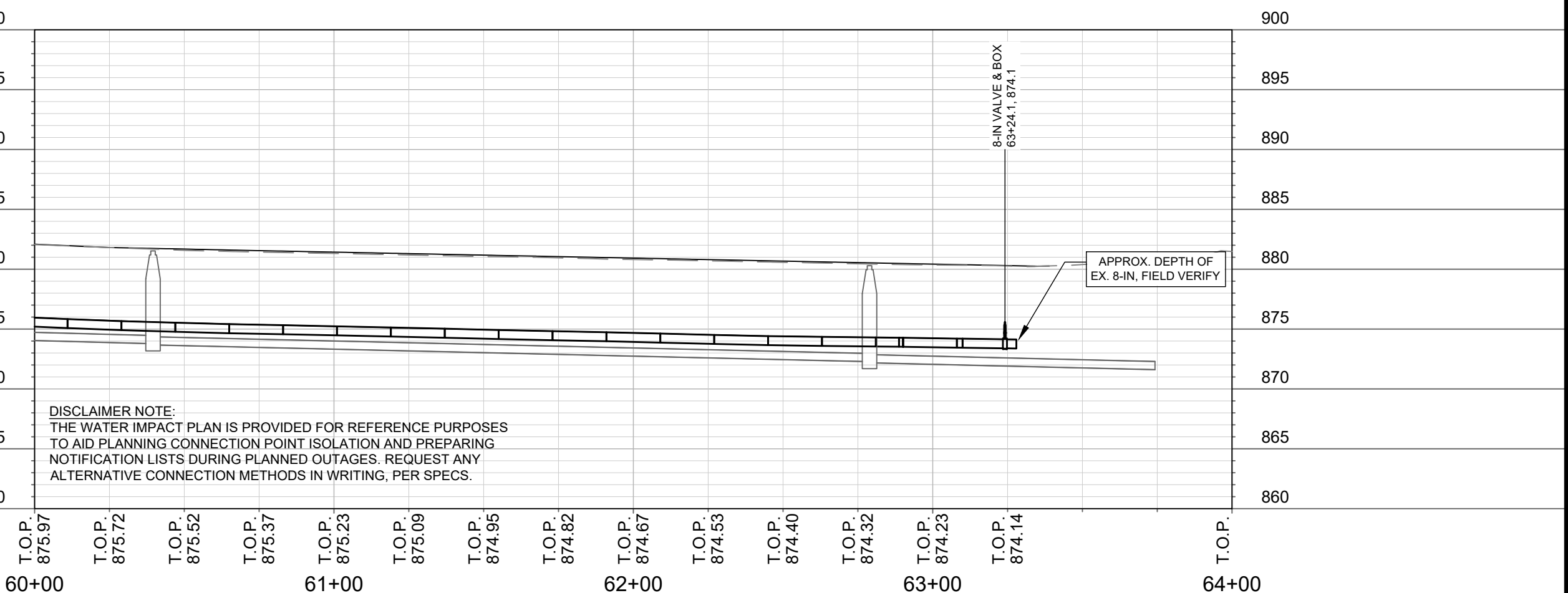
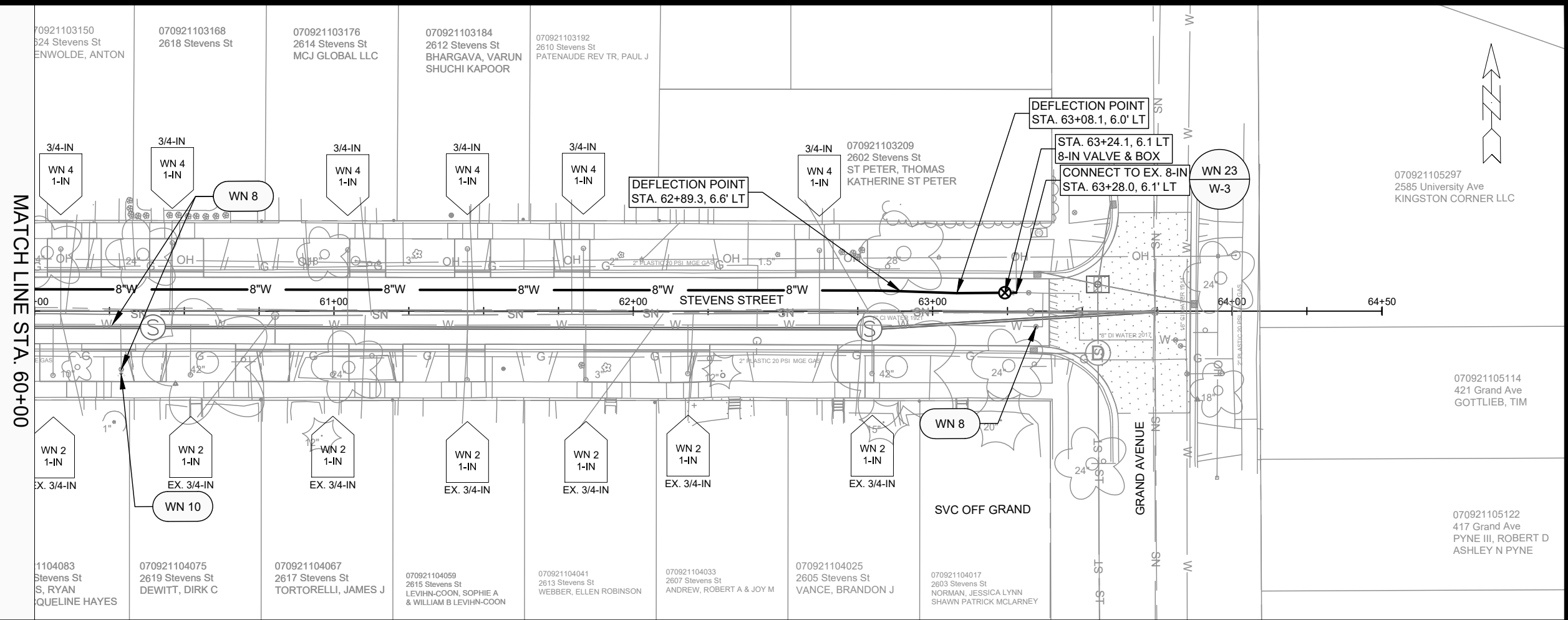
MARK	REVISION	Date	BY
14764	W-2	4/29/2024 12:07 PM	W-2

14764
 MADISON, WI
 CONTRACT NO: 8745

STEVENS STREET WATER PLAN AND PROFILE
 STEVENS STREET ASSESSMENT DISTRICT - 2024
 M:\DESIGN\Projects\14764\CAD\Water\14764WU-Water-Stevens.dwg



14764
 W-2



DISCLAIMER NOTE:
 THE WATER IMPACT PLAN IS PROVIDED FOR REFERENCE PURPOSES TO AID PLANNING CONNECTION POINT ISOLATION AND PREPARING NOTIFICATION LISTS DURING PLANNED OUTAGES. REQUEST ANY ALTERNATIVE CONNECTION METHODS IN WRITING, PER SPECS.

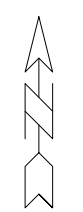
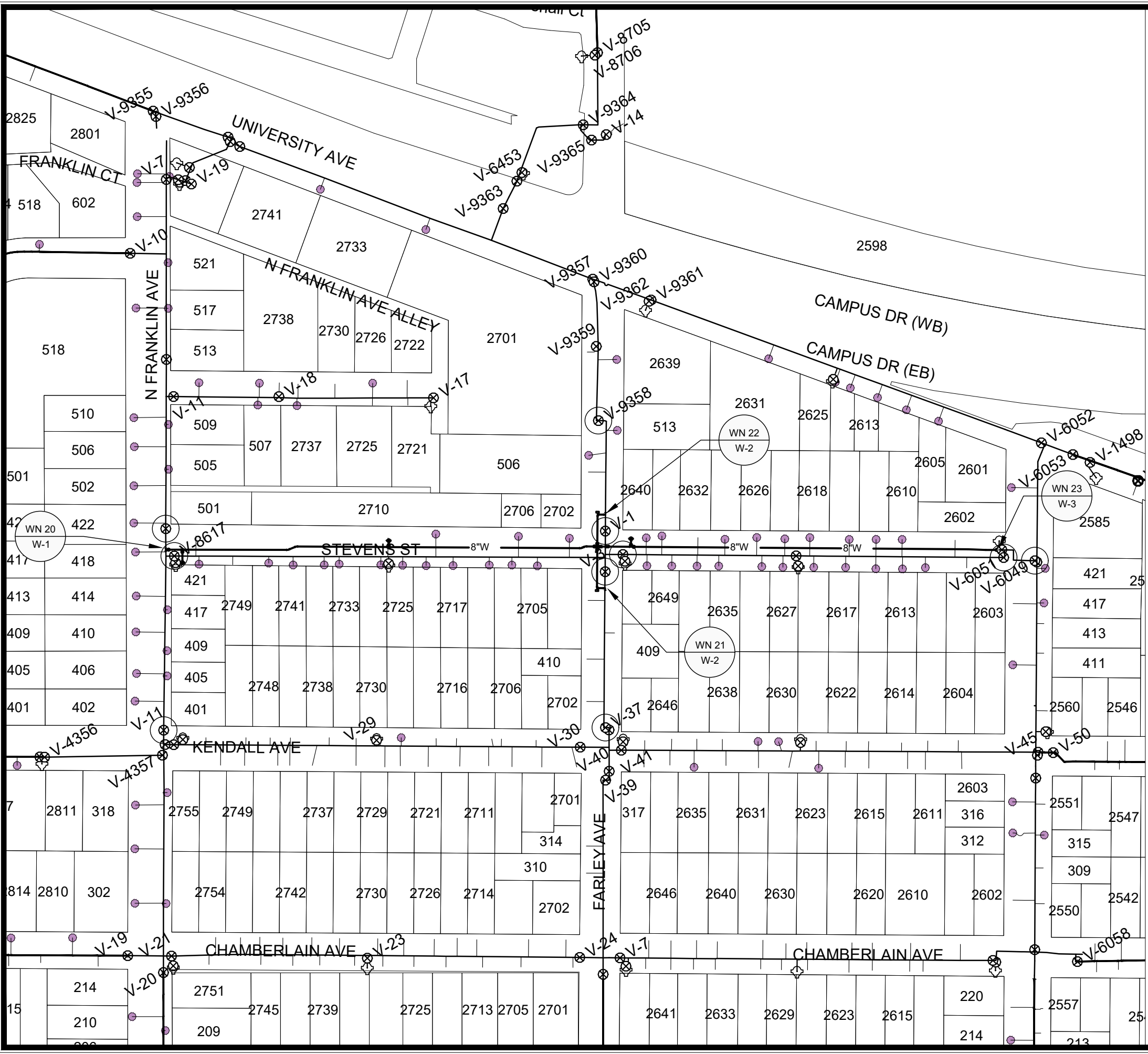
14764	14764	14764
MADISON, WI	MADISON, WI	MADISON, WI
8745	8745	8745
CONTRACT NO.	CONTRACT NO.	CONTRACT NO.
14764	14764	14764
W-3	W-3	W-3

DESIGNED BY: ###
 DATE: 4/29/2024 12:07 PM
 REVISION: ###
 SCALE: #####

STEVENS STREET WATER PLAN AND PROFILE
 STEVENS STREET ASSESSMENT DISTRICT - 2024

M:\DESIGN\Projects\14764\CAD\Water\14764WU-Water-Stevens.dwg

14764
 W-3



1" = 150'

WN20 W-1 CUT IN CONNECTION AT EX. 10-IN STEVENS AT FRANKLIN
ISOLATION VALVES: V-8617, V-7345, AND V-11
NOTIFY: 402 THROUGH 418 N. FRANKLIN AVE

WN21 W-2 CUT IN CONNECTION AT EX. 6-IN FARLEY AT STEVENS
ISOLATION VALVES: V-3 AND V-37
NOTIFY: 2702 KENDALL AVE AND 409 THROUGH 418 FARLEY AVE

WN22 W-2 CUT IN CONNECTION AT EX. 6-IN FARLEY AT STEVENS
ISOLATION VALVES: V-1 AND V-9358
NOTIFY: 506 AND 513 FARLEY AVE

WN23 W-3 CUT IN CONNECTION AT EX. 8-IN STEVENS AT GRAND
ISOLATION VALVES: V-6050
NOTIFY: NONE REQUIRED

DISCLAIMER NOTE:
THE WATER IMPACT PLAN IS PROVIDED FOR REFERENCE PURPOSES
TO AID PLANNING CONNECTION POINT ISOLATION AND PREPARING
NOTIFICATION LISTS DURING PLANNED OUTAGES. REQUEST ANY
ALTERNATIVE CONNECTION METHODS IN WRITING, PER SPECS.

BY	DATE	REVISION	MARK	DESIGNED BY	TDP	DATE	SCALE
						4/29/2024	1"=150'

14764
MADISON, WI
8745
CONTRACT NO:

STEVENS STREET RESURFACING WITH UTILITIES
WATER IMPACT PLAN NORTH FRANKLIN AVE
M:\DESIGN\Projects\14764\CAD\Water\14764WU-impactPlan.dwg



14764
W-4

CONSTRUCTION NOTES:

1. CONSTRUCT NEW WATER MAIN 6.0' BELOW FINISHED GRADE, UNLESS OTHERWISE NOTED. INSULATE MAIN WITH POLYSTYRENE BOARD AT STORM CROSSINGS AND OTHER AREAS IDENTIFIED BY ENGINEER AS HAVING INADEQUATE COVER.
2. VERIFY SIZE OF EXISTING WATER SERVICES AND RECONNECT SERVICES AS INDICATED.
3. MINIMIZE DISRUPTION OF SERVICE TO CUSTOMERS. NOTIFY PER CONTRACT REQUIREMENTS OF ANY PLANNED WATER OUTAGE.

- WN-1 REPLACE THE EXISTING LEAD SERVICE WITH A NEW COPPER SERVICE.
- WN-2 EXTEND AND RECONNECT THE EXISTING COPPER SERVICE TO THE NEW WATER MAIN.
- WN-3 EXISTING SERVICE TO BE ABANDONED WHEN THE WATER MAIN IS CUT OFF.
- WN-4 DISCONNECT FROM THE OLD WATER MAIN AND RECONNECT THE EXISTING COPPER WATER SERVICE LATERAL TO THE NEW WATER MAIN.
- WN-5 RELOCATE THE EXISTING FIRE HYDRANT.
- WN-6 ABANDON WATER VALVE ACCESS STRUCTURE.
- WN-7 FURNISH AND INSTALL THE NEW TOP SECTION FOR THE WATER ACCESS STRUCTURE.
- WN-8 ABANDON THE VALVE BOX.
- WN-9 FURNISH THE DITCH, COMPACTION, AND ALL MATERIALS AND LABOR FOR THE INSTALLATION OF NEW SERVICE LATERAL.
- WN-10 REMOVE AND SALVAGE EXISTING HYDRANT
- WN-11 REPLACE THE EXISTING COPPER SERVICE WITH A COPPER SERVICE
- WN-20+ SEE WATER IMPACT PLAN FOR CONNECTION POINT ISOLATION AND WATER SHUT-OFF NOTIFICATION INFORMATION.

WATER UTILITY ULO SCHEDULE				
ULO	UTILITY	STATION	OFFSET	SHEET
N/A	N/A	N/A	N/A	N/A

MARK	REVISION	DATE	BY
14764		4/29/2024	TDP
Scale: N/A			W-5

14764
MADISON, WI
8745
CONTRACT NO:

STEVENS STREET RESURFACING WITH UTILITIES
WATER ESTIMATE OF MATERIALS
M:\DESIGN\Projects\14764\CAD\Water\14764WU-Materials.dwg

CITY OF MADISON WISCONSIN
14764
W-5

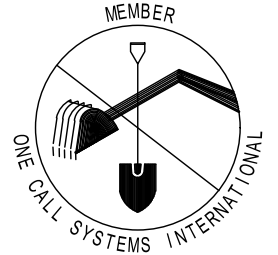
*ESTIMATE OF MATERIALS SUPPLIED BY CONTRACTOR:			
PAY ITEM ID	DESCRIPTION	QUANTITY	UNIT
70002	FURNISH AND INSTALL 6-INCH PIPE & FITTINGS	80	LNFT
70003	FURNISH AND INSTALL 8-INCH PIPE & FITTINGS	1360	LNFT
70031	FURNISH AND INSTALL 6-INCH WATER VALVE	3	EACH
70032	FURNISH AND INSTALL 8-INCH WATER VALVE	6	EACH
70040	FURNISH AND INSTALL AND SALVAGE HYDRANT	3	EACH
70056	RECONNECT 1-INCH SERVICE LATERAL	40	EACH
70080	CUT-IN OR CONNECT TO EXISTING WATER SYSTEM	4	EACH
70101	FURNISH AND INSTALL STYROFOAM	2	EACH
70111	FURNISH & INSTALL ANODE	3	EACH
71014	8-IN MJ PLUG	2	EACH
71041	8X8-IN CROSS	1	EACH
71110	6-IN 90° BEND	2	EACH
71135	8-IN 22-1/2° BEND	4	EACH
71210	8X6-IN TEE	5	EACH
71214	10X8-IN TEE	1	EACH
71341	8X18-IN OFFSET	2	EACH
*ESTIMATE OF MATERIALS SALVAGED:			
	SALVAGE HYDRANT	4	EACH

* ESTIMATE OF MATERIALS IS FOR INFORMATION ONLY. ENGINEER DOES NOT GUARANTEE ACCURACY OF MATERIAL TAKE-OFF.

TO OBTAIN LOCATION OF PARTICIPANTS' UNDERGROUND FACILITIES BEFORE YOU DIG IN WISCONSIN

CALL DIGGERS HOTLINE TOLL FREE 811 OR 1-800-242-8511
FAX-A-LOCATE 1-800-338-3860
TDD (FOR HEARING IMPAIRED) 1-800-542-2289

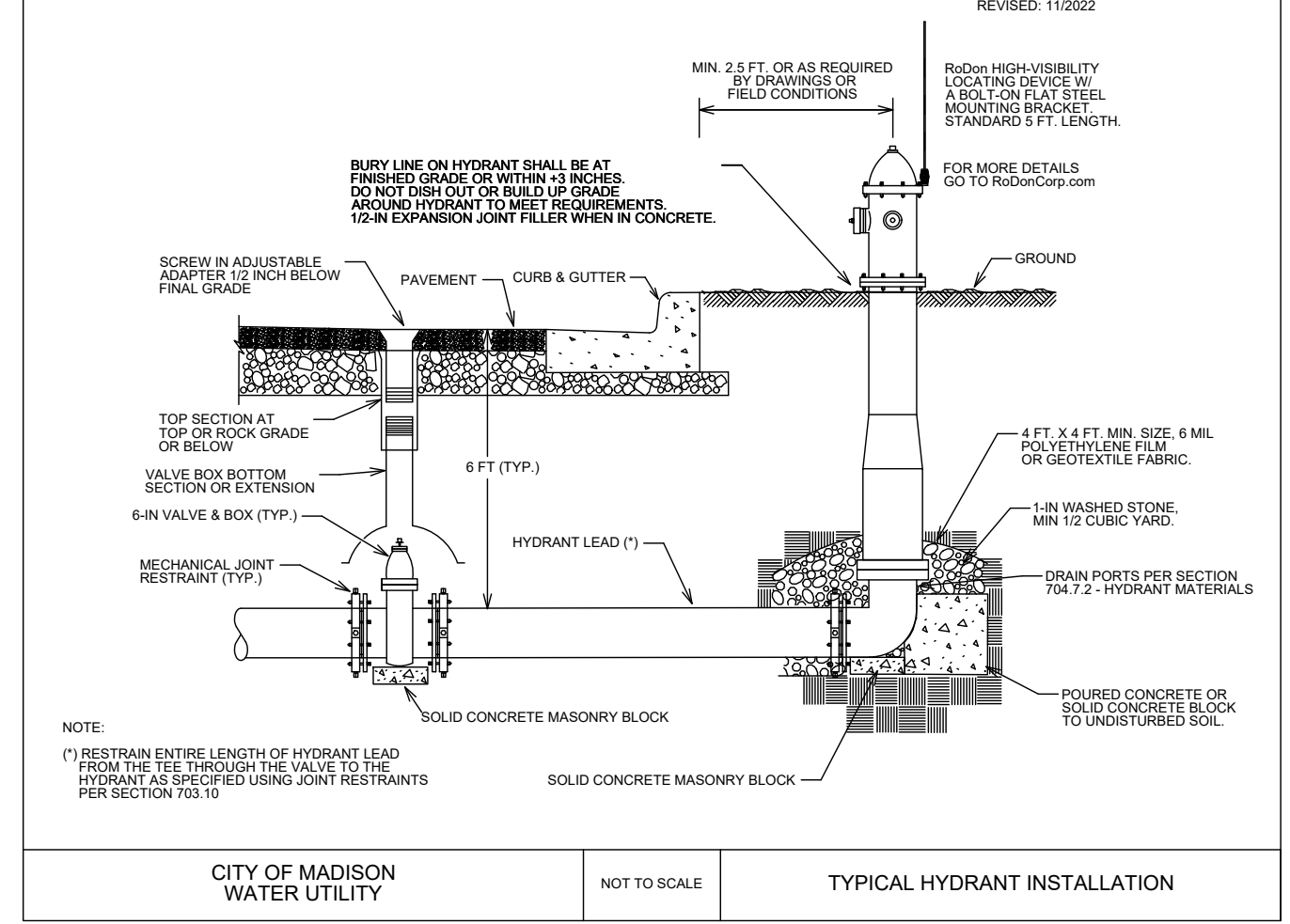
WIS. STATUTE 182.0175 (1974) REQUIRES MIN. OF 3 WORK DAYS NOTICE BEFORE YOU EXCAVATE.



DISCLAIMER NOTE: UTILITY LOCATIONS SHOWN ARE APPROXIMATE ONLY. IT SHALL BE THE CONTRACTOR'S RESPONSIBILITY TO DETERMINE THE EXACT HORIZONTAL AND VERTICAL LOCATION OF ALL EXISTING UNDERGROUND AND OVERHEAD UTILITIES PRIOR TO COMMENCING WORK.

PART VII - WATER MAINS AND SERVICE LATERALS

DETAIL DRAWING NO. 7.04
REVISED: 11/2022



CITY OF MADISON WATER UTILITY NOT TO SCALE TYPICAL HYDRANT INSTALLATION