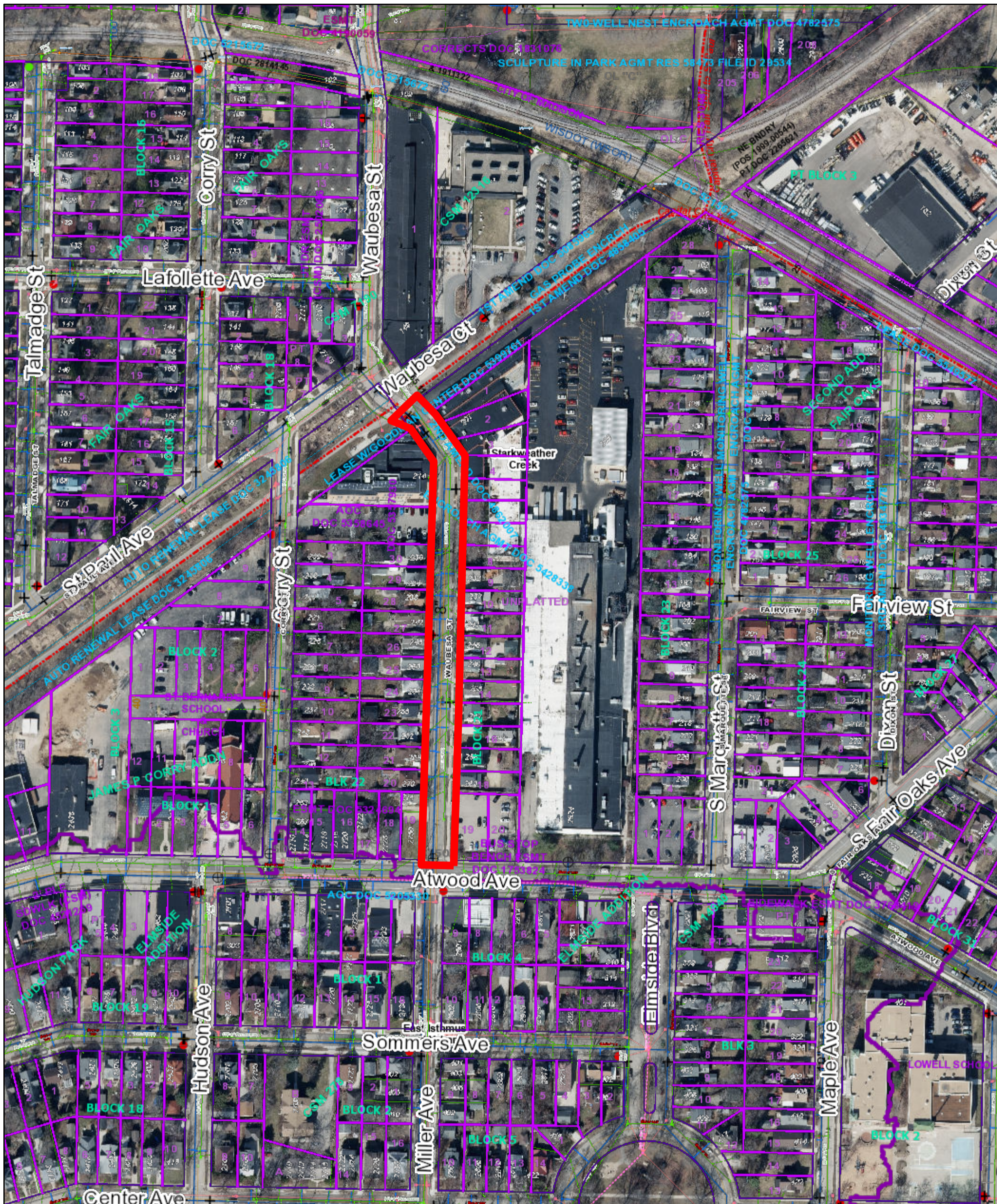


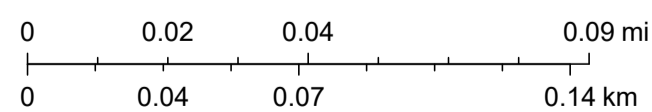
ArcGIS Web Map



3/25/2026, 3:37:46 PM

- | | | |
|---------------------------------|-------------------------------|------------------------------|
| Proposed_Or_Reserved_Lines | Other_Easement_Lines | Sanitary_Sewer_Easement_Text |
| Proposed_Or_Reserved_Text | Water_Utility_Easement_Lines | Encroachment & Lease Text |
| Vacated_ROW_Text_LeaderLines | Storm_Sewer_Easement_Lines | Right_Of_Way_Lines |
| Vacated_ROW_Text | Sanitary_Sewer_Easement_Lines | Railroad_ROW_Lines |
| Vacated_ROW_Lines | Encroach_Lease_Line | Plat_CSM_Lot_Lines |
| LandsAcquiredForROW_Leaderlines | Other_Easement_Text | Platted_Lots_In_Parks_Lines |
| LandsAcquiredForROW_Lines | Water_Utility_Easement_Text | Right_Of_Way_Width_Text |
| LandsAcquiredForROW_Text | Storm_Sewer_Easement_Text | Railroad_ROW_Text |

1:2,668



City of Madison Engineering, Dane County Land Information Office (LIO), Fly Dane Partnership, Ayres Associates, Wisconsin Regional Orthoimagery Consortium (WROC), City of Madison IT