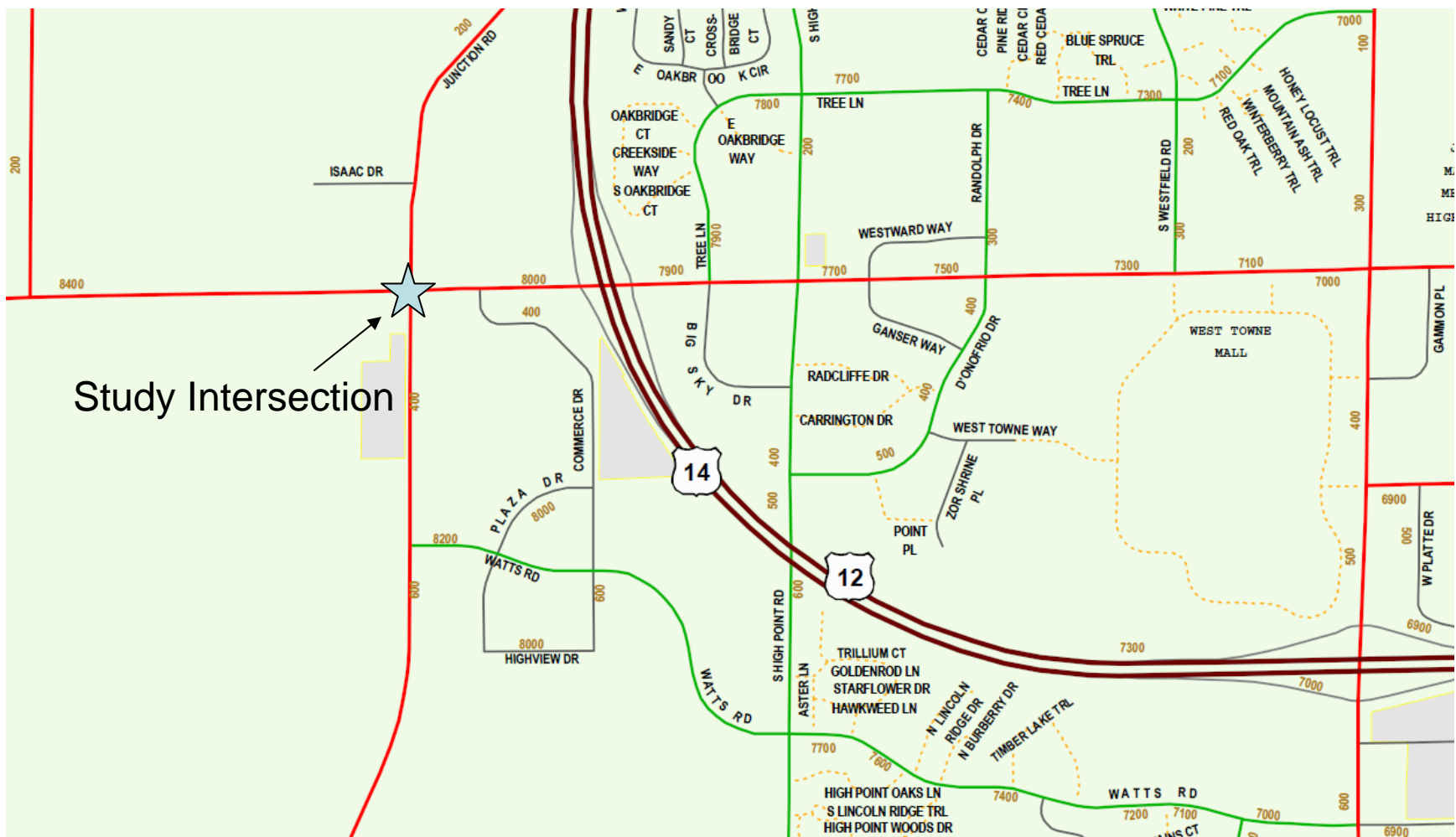


City of Madison

Mineral Point / Junction Road Intersection Improvements Alternatives Analysis

Location - Road Map



Purpose for Improvements

- Provide a safe and convenient intersection for all users including pedestrians, bicyclists, and motor vehicles
- Provide acceptable operating conditions for existing and future traffic volumes (LOS D or better at 2030 volumes)
- Accommodate future planned growth in the area
- Provide a well designed intersection that minimizes impacts

Existing Conditions



Traffic Congestion

Average Daily Traffic

Mineral Point Rd:

2007 - 40,500 vpd

2030 - 70,000 vpd

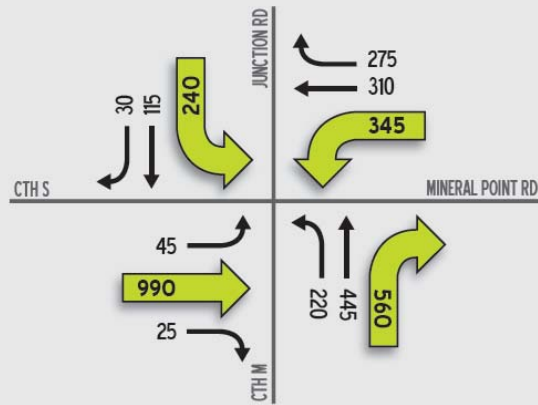
CTH M:

2007 - 21,700 vpd

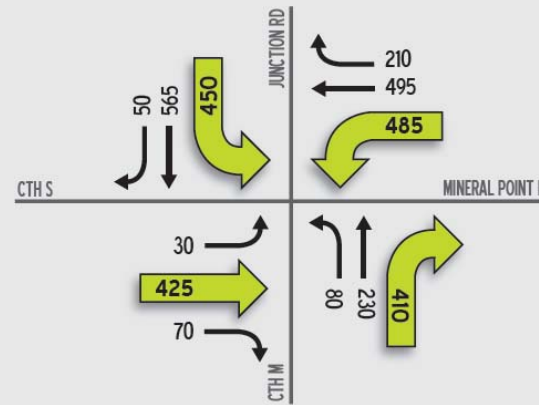
2030 - 32,000 vpd



Key Traffic Movements

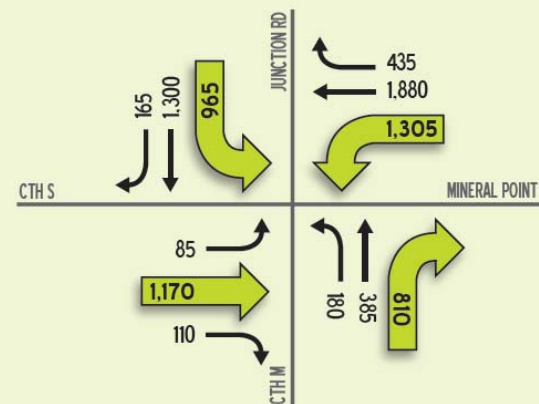
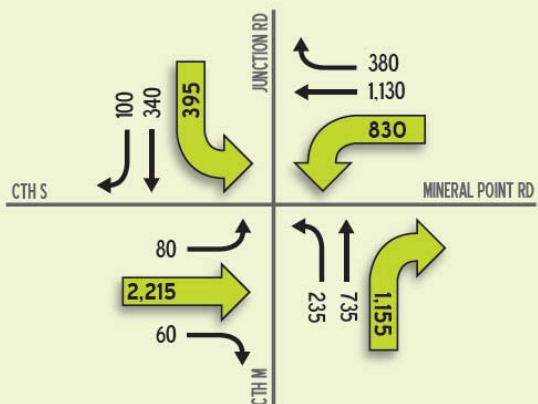


AM



PM

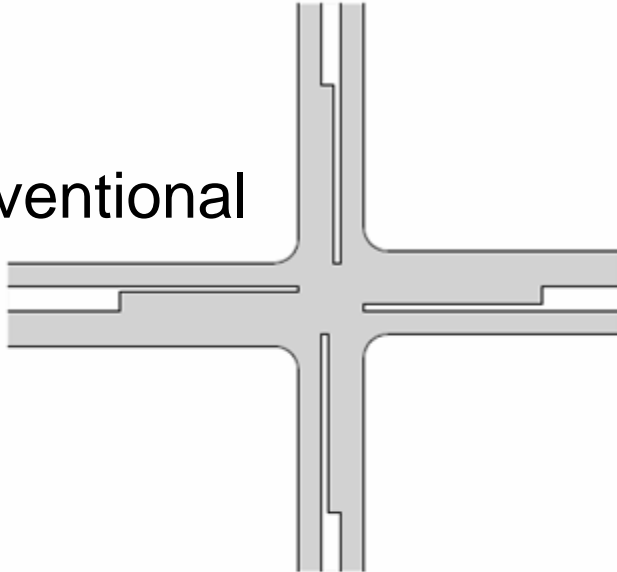
Existing Volumes



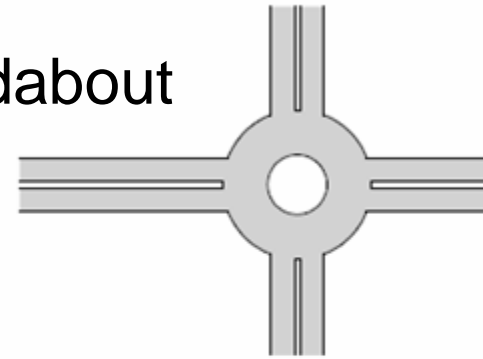
Year 2030 Volumes

Alternatives Considered that Did Not Meet Purposes

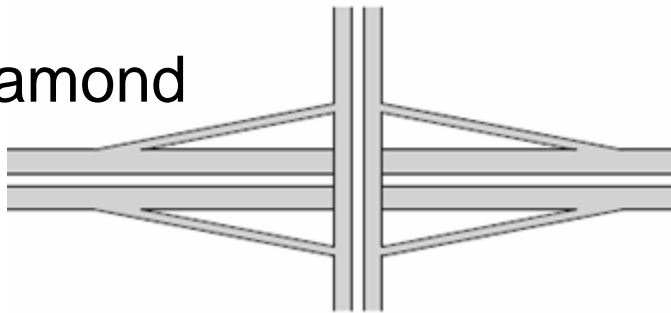
Conventional



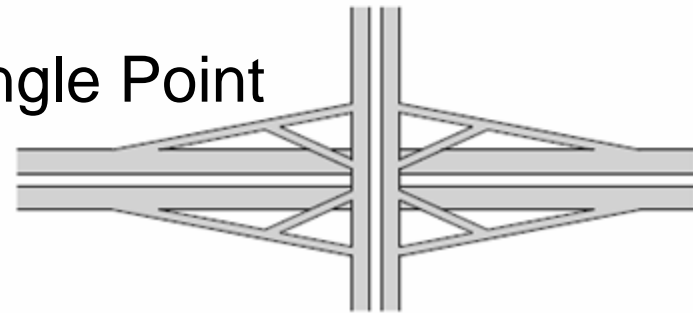
Roundabout



Diamond



Single Point



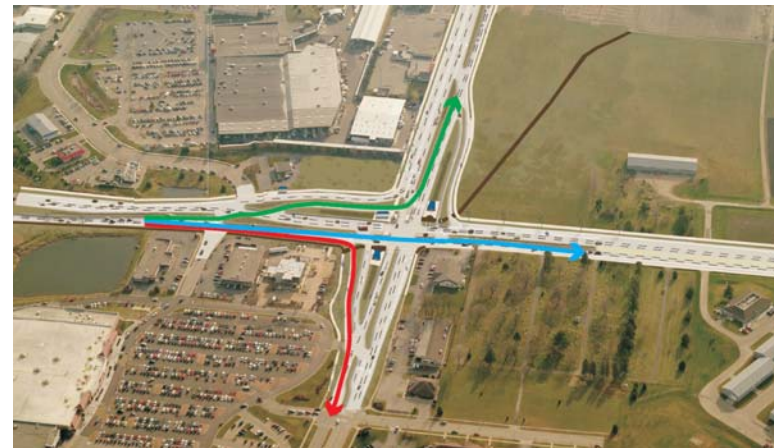
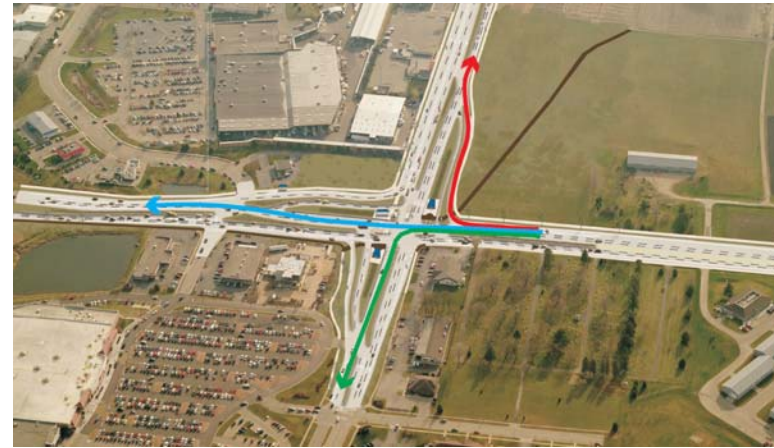
Location



Advance Left-turn Alternative



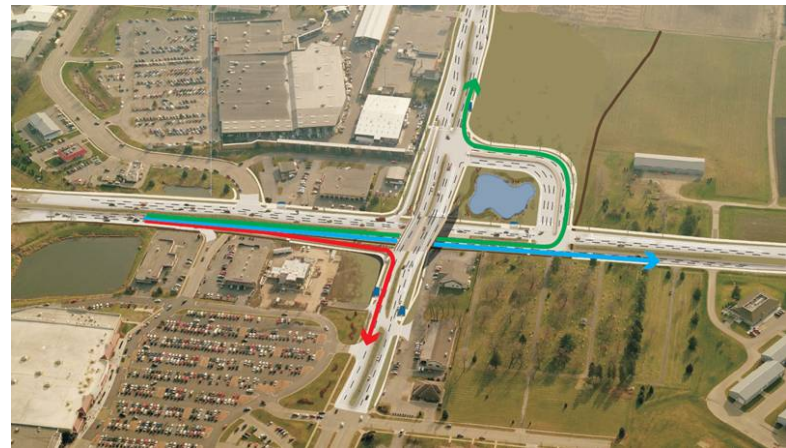
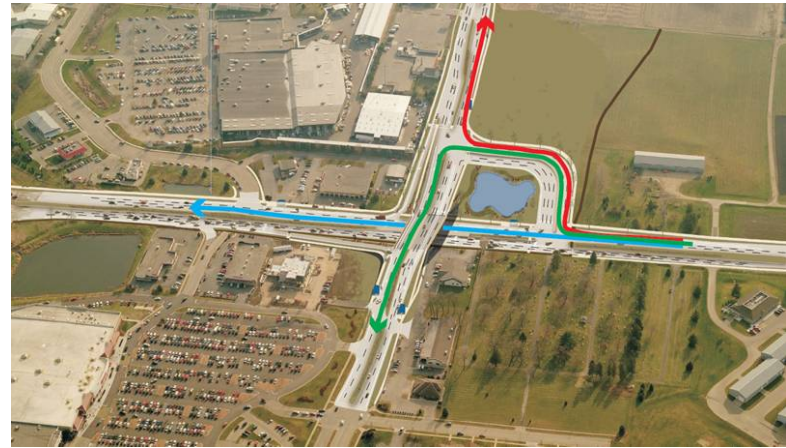
Advance Left-turn Alternative Turning Movements



Jug Handle Alternative



Jug Handle Alternative Turning Movements



Offset Split-Grade Alternative



Offset Split-Grade Alternative Turning Movements

