

METRO TRANSIT NAKOOSA TRAIL

Satellite Bus Facility

INFORMATIONAL UDC PRESENTATION

03/07/2018

Madison, Wisconsin



Site Context



The Site is currently Zoned Commercial Center District (Retail), but is in process of being rezoned to Industrial Limited.

The surrounding zones are Industrial - Limited District, Conservancy District, Suburban Residential - Varied District 2, and Planned Development District.



View from Nakoosa Trail to Cub Food Front



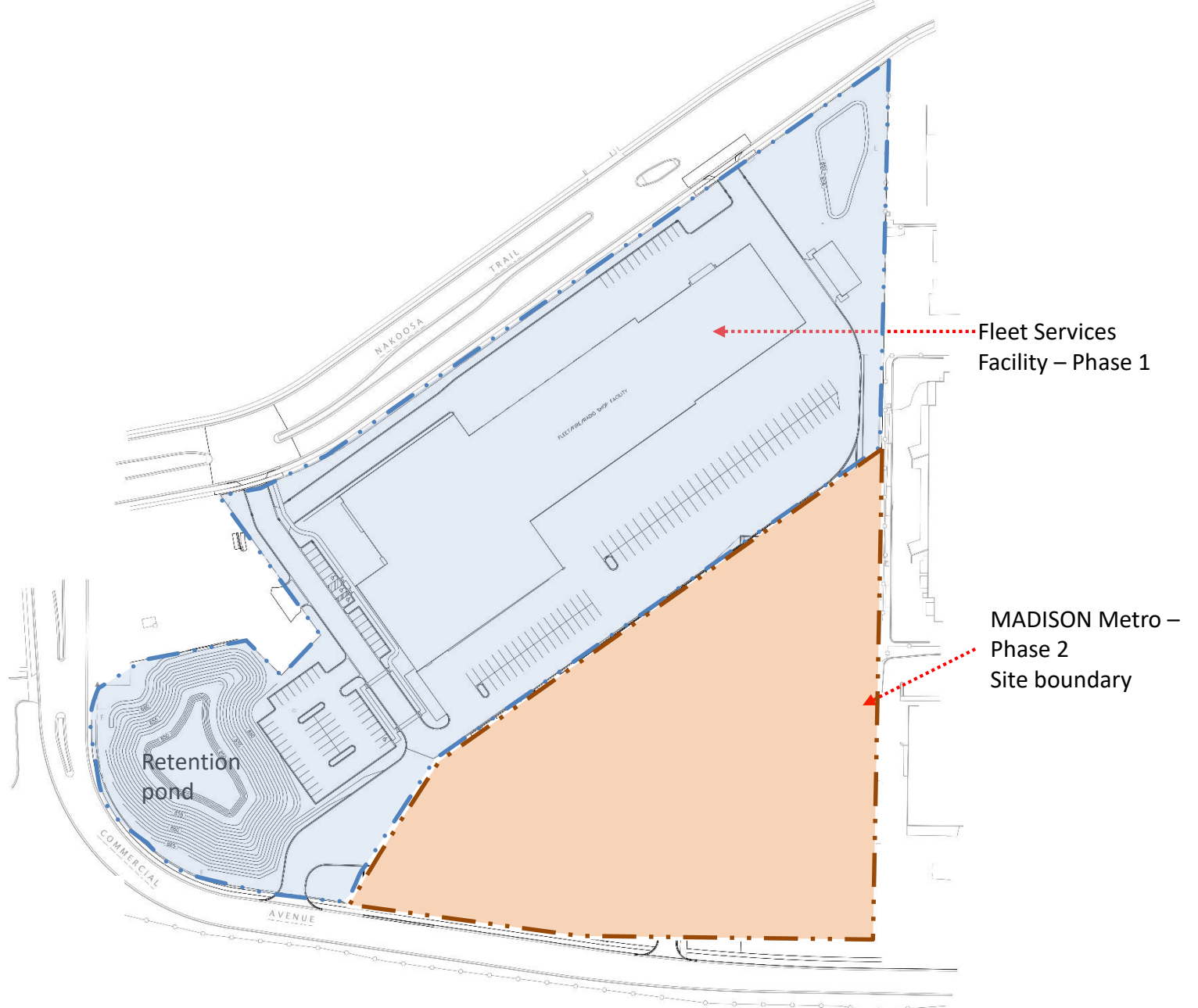
View from Site towards Walmart



View from Commercial - Nakoosa Corner looking towards Cub Foods

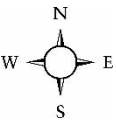


View looking down to Site



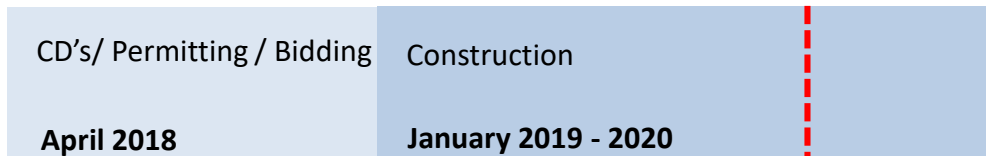
Fleet Services Facility – Phase 1

MADISON Metro – Phase 2 Site boundary

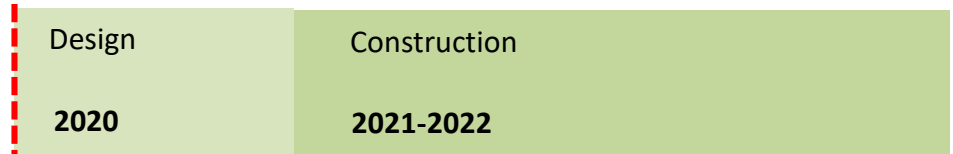


PROJECT SCHEDULE

Phase 1: Fleet Services Facility



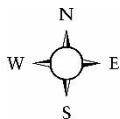
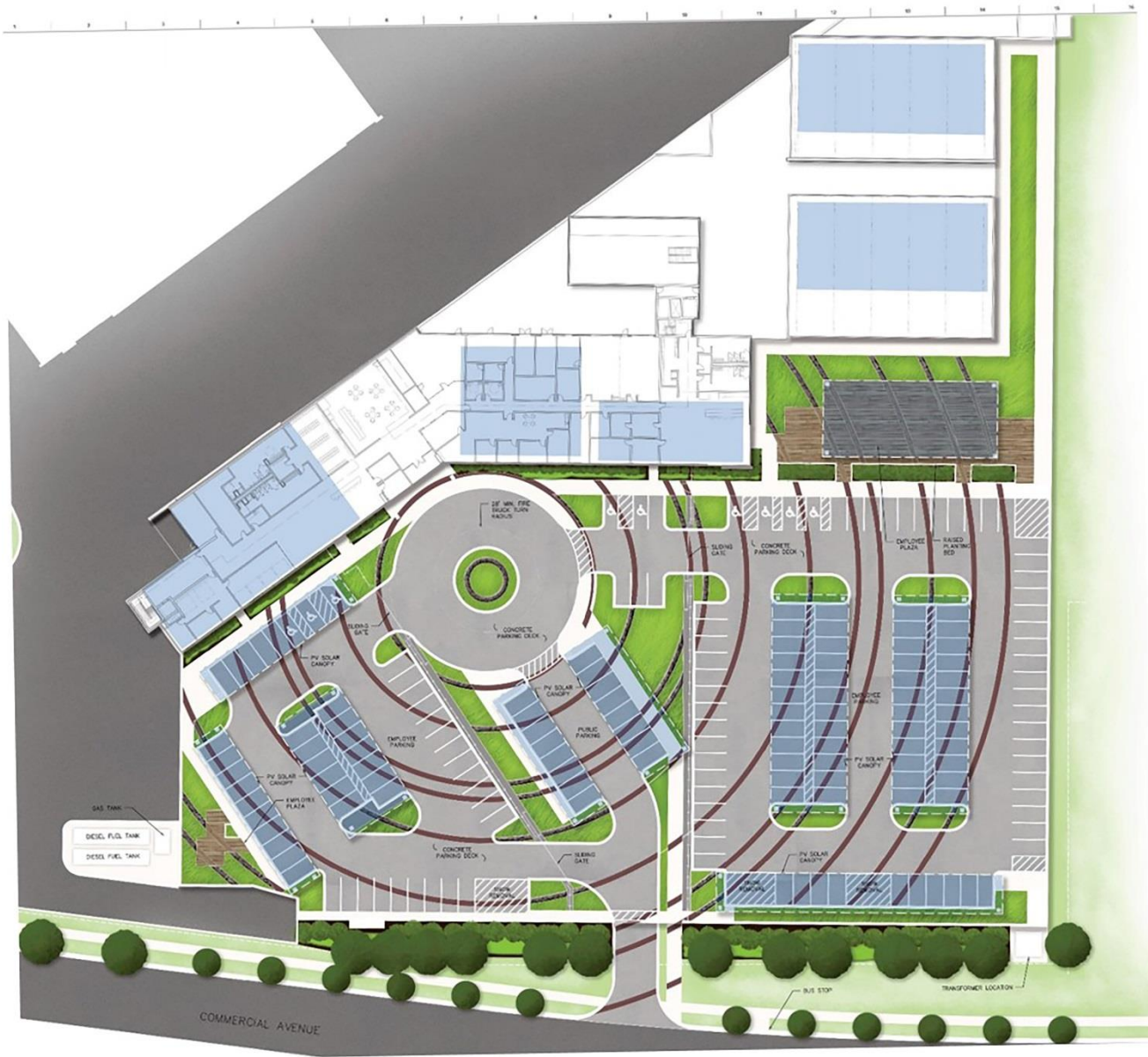
Phase 2: Madison Metro Facility

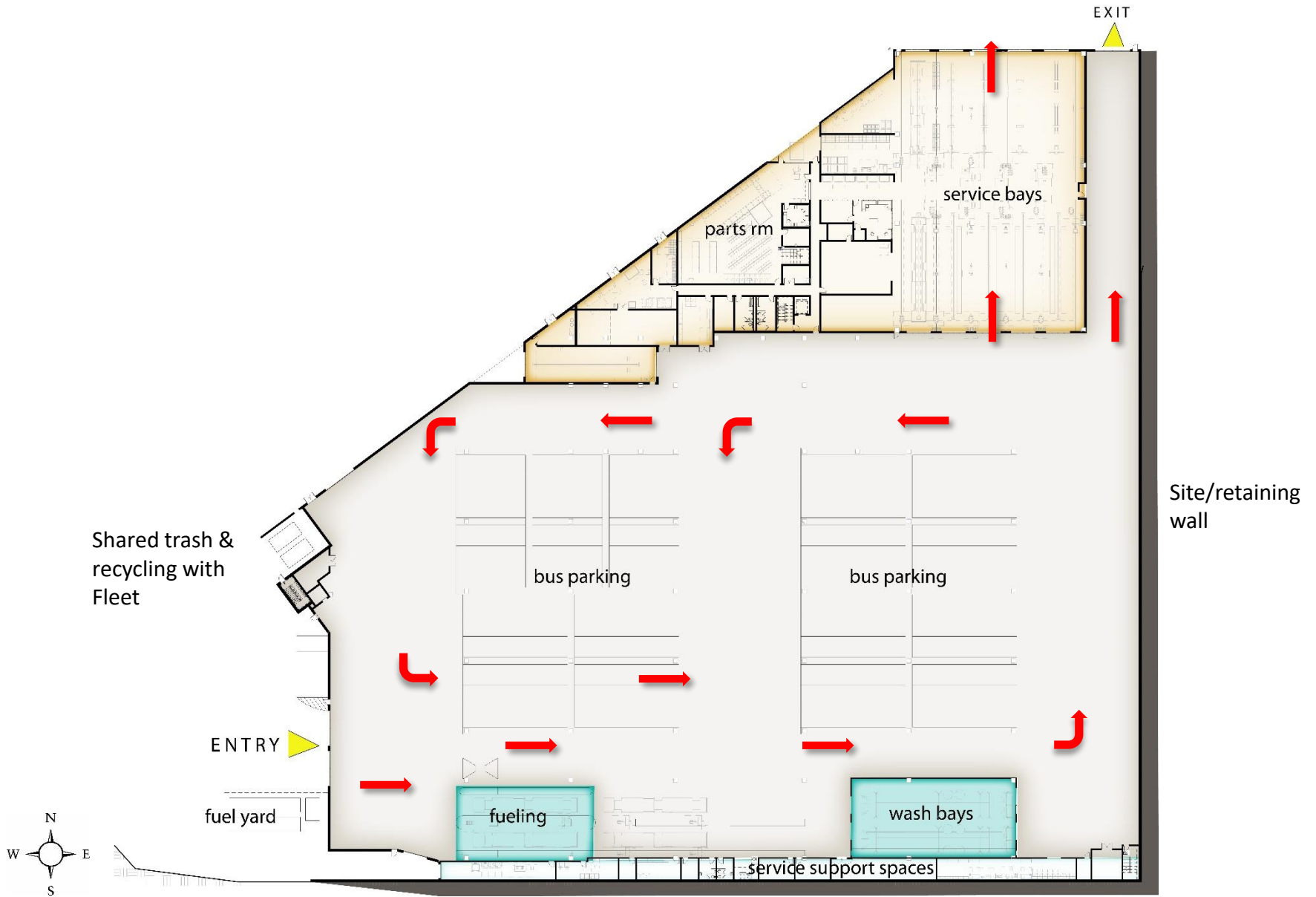


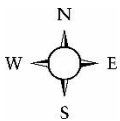
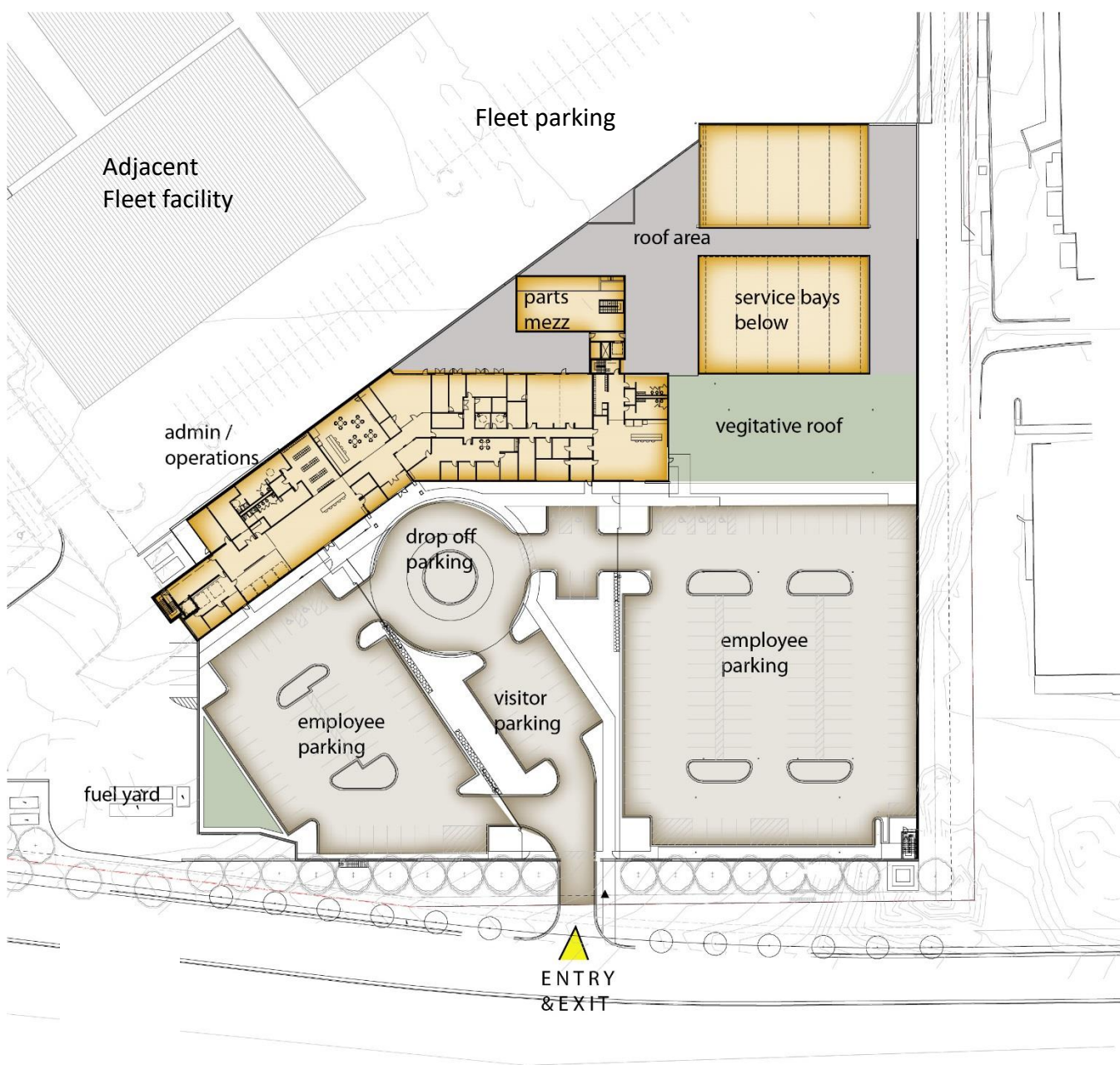


Phase 2 - Future
Madison
Metro Site











RENDERING OF THE SITE

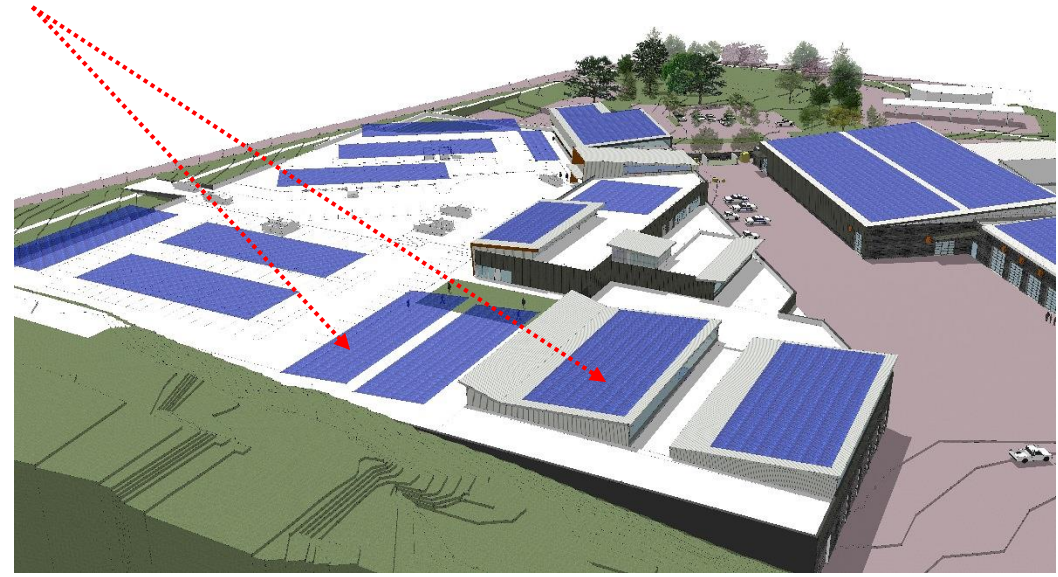
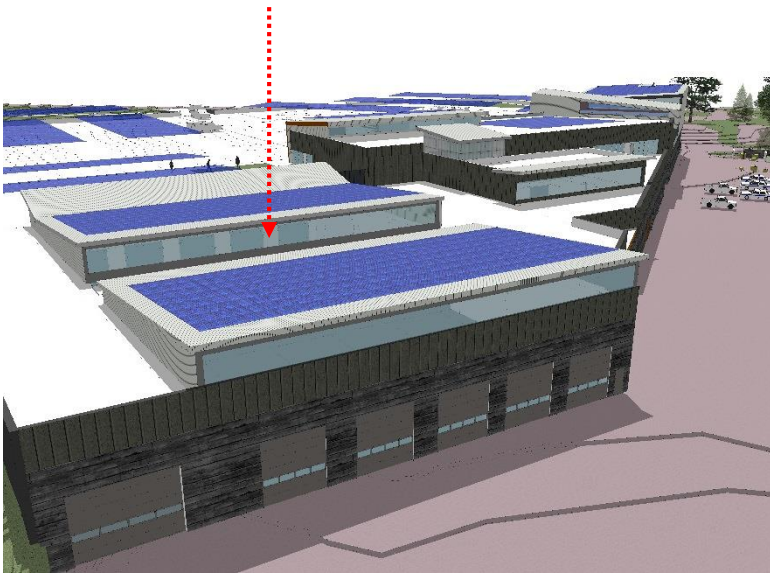
Metro Transit Nakoosa Trail Satellite Bus Facility
Madison, Wisconsin | March 07, 2018



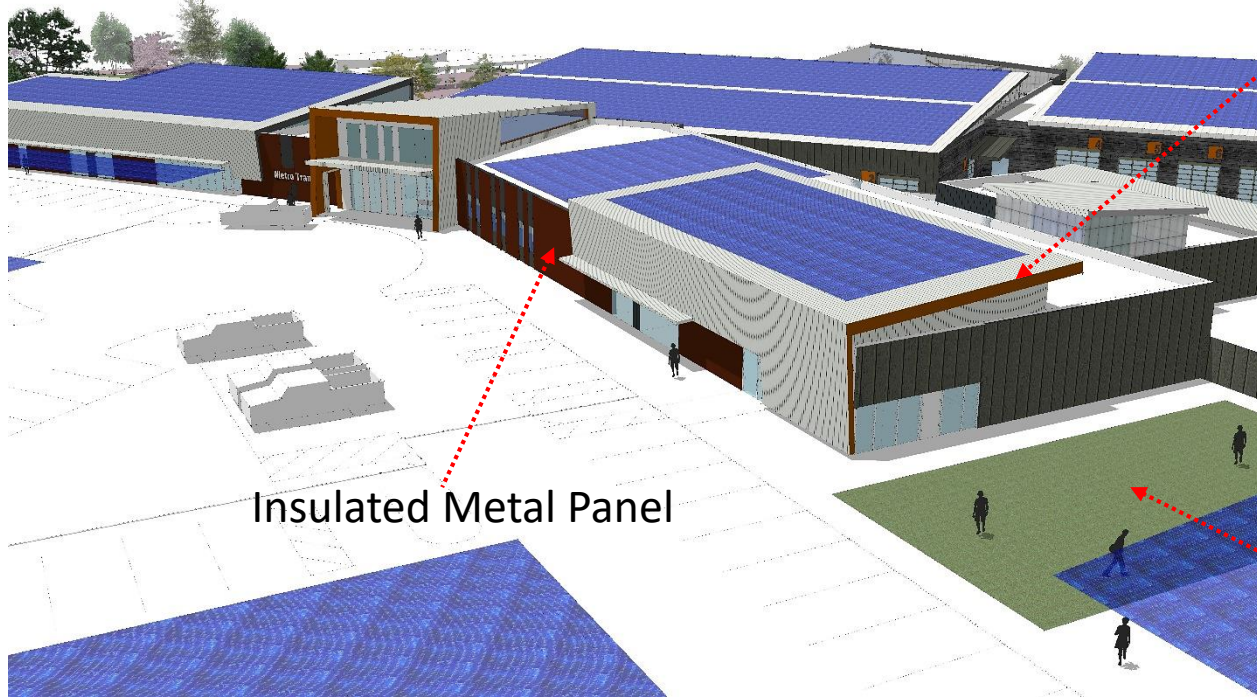
Translucent Skylight

Photovoltaic Panels

Precast Wall Panels



PERSPECTIVES

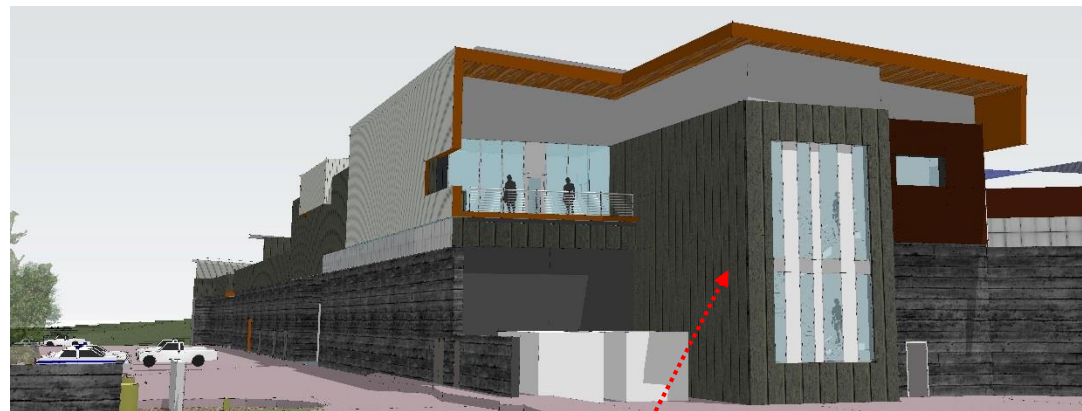


Standing Seam Metal Roof

Insulated Metal Panel



Vegetative Roof Areas



PERSPECTIVES

Insulated Metal Panel



Precast Wall Panels