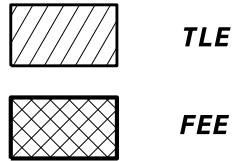




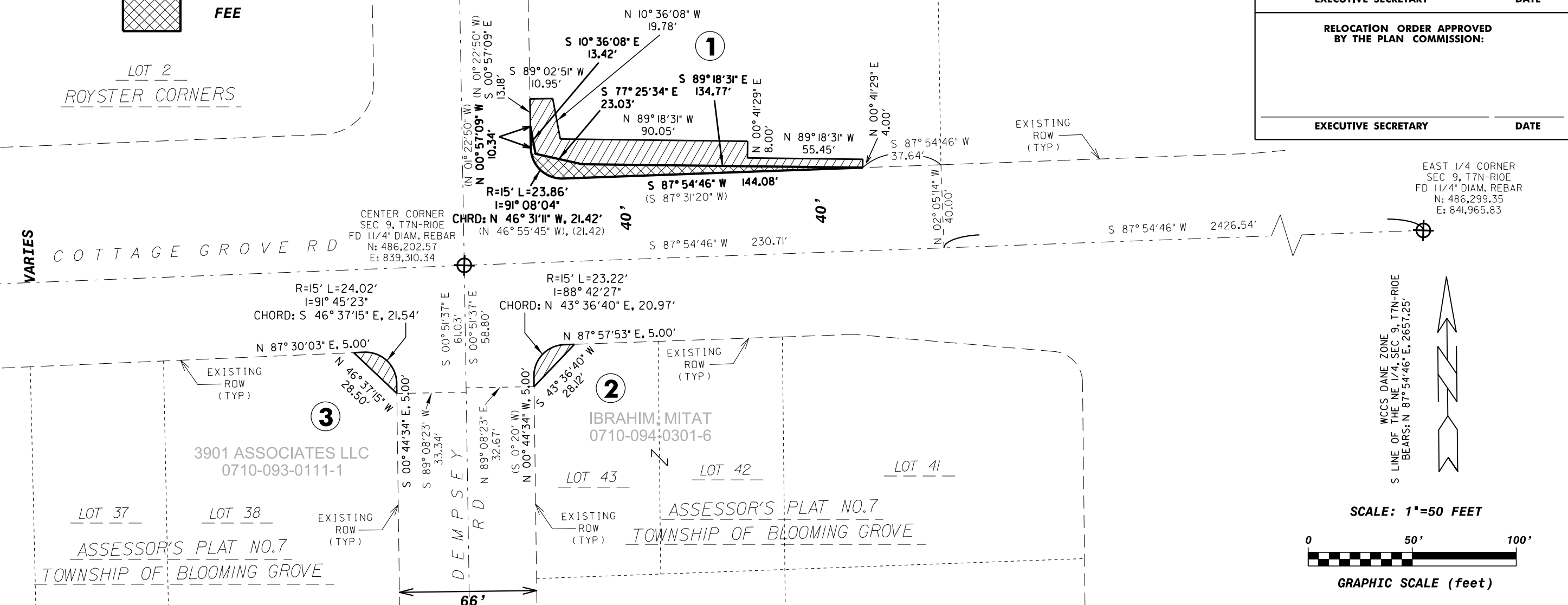
Madison, Wisconsin



LOT 2
ROYSTER CORNERS

LOT 2
CSM 2426

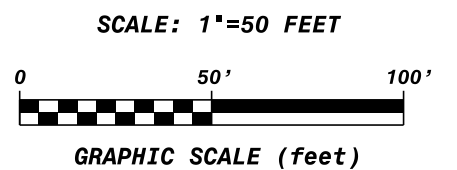
H & K PARTNERS LLC
0710-091-0902-8



RELOCATION ORDER APPROVED BY THE COMMON COUNCIL:	
CITY CLERK	DATE
RELOCATION ORDER APPROVED BY THE BOARD OF PUBLIC WORKS:	
EXECUTIVE SECRETARY	DATE
RELOCATION ORDER APPROVED BY THE PLAN COMMISSION:	
EXECUTIVE SECRETARY	DATE

EAST 1/4 CORNER
SEC 9, T7N-R10E
FD 1 1/4" DIAM. REBAR
N: 486,299.35
E: 841,965.83

WCCS DANE ZONE
S LINE OF THE NE 1/4, SEC 9, T7N-R10E
BEARS: N 87°54'46" E, 2657.25'



SCHEDULE OF INTERESTS REQUIRED				
PARCEL #	OWNER NAME	FEE AREA REQUIRED	TLE AREA REQUIRED	CONSENT TO OCCUPY
①	H & K PARTNERS LLC	644 SQ FT 0.015 ACRES	1636 SQ FT 0.038 ACRES	
②	IBRAHIM, MITAT		148 SQ FT 0.003 ACRES	
③	3901 ASSOCIATES LLC		158 SQ FT 0.004 ACRES	

**CITY OF MADISON
RELOCATION ORDER**

"PLAT OF LAND INTERESTS REQUIRED FOR THE CONSTRUCTION AND MAINTENANCE OF IMPROVEMENTS FOR COTTAGE GROVE AND DEMPSEY ROADS, LOCATED IN PART OF THE SW 1/4 OF THE NE 1/4, PART OF THE NE 1/4 OF THE SW 1/4 & PART OF THE NW 1/4 OF THE SE 1/4 OF SEC 9, T 7 N, R 10 E, CITY OF MADISON, DANE COUNTY, WI."

CITY ENGINEERING DIVISION
PROJECT NO. 53W1681
REAL ESTATE PROJECT NO. 10609

NOVEMBER 24, 2014 djs
REV.

PLOT SCALE: _____
PLOT NAME: _____
REV. DATE: _____
ORIGINATOR: _____