

APPLICATION FOR
URBAN DESIGN COMMISSION
REVIEW AND APPROVAL

AGENDA ITEM # _____

Project # _____

03450

DATE SUBMITTED: May 10, 2006

Action Requested
Informational Presentation

UDC MEETING DATE: June 7, 2006

Initial Approval and/or Recommendation
 Final Approval and/or Recommendation

PROJECT ADDRESS: Lot 90 Midtown Commons, NW Corner of Mayo Drive and Waldorf Blvd.

ALDERMANIC DISTRICT: 1 Jed Sanborn

OWNER/DEVELOPER (Partners and/or Principals) ARCHITECT/DESIGNER/OR AGENT:

Dimension IV - Madison, LLC

Jerry Bourquin

313 W. Beltline Hwy., Suite 161, Madison, WI 53713

CONTACT PERSON: Jerry Bourquin

Address: Dimension IV - Madison, LLC, 313 W. Beltline Hwy., Suite 161, Madison, WI 53713

Phone: 608-229-4444

Fax: 608-229-4445

E-mail address: jbouquin@dimensionivmadison.com

TYPE OF PROJECT:

(See Section A for:)

- Planned Unit Development (PUD)
 General Development Plan (GDP)
 Specific Implementation Plan (SIP)
 Planned Community Development (PCD)
 General Development Plan (GDP)
 Specific Implementation Plan (SIP)
 Planned Residential Development (PRD)
 New Construction or Exterior Remodeling in an Urban Design District * (A public hearing is required as well as a fee)
 School, Public Building or Space (Fee may be required)
 New Construction or Addition to or Remodeling of a Retail, Hotel or Motel Building Exceeding 50,000 Sq. Ft.
 Planned Commercial Site

(See Section B for:)

- New Construction or Exterior Remodeling in C4 District (Fee required)

(See Section C for:)

- R.P.S.M. Parking Variance (Fee required)

(See Section D for:)

- Comprehensive Design Review* (Fee required)

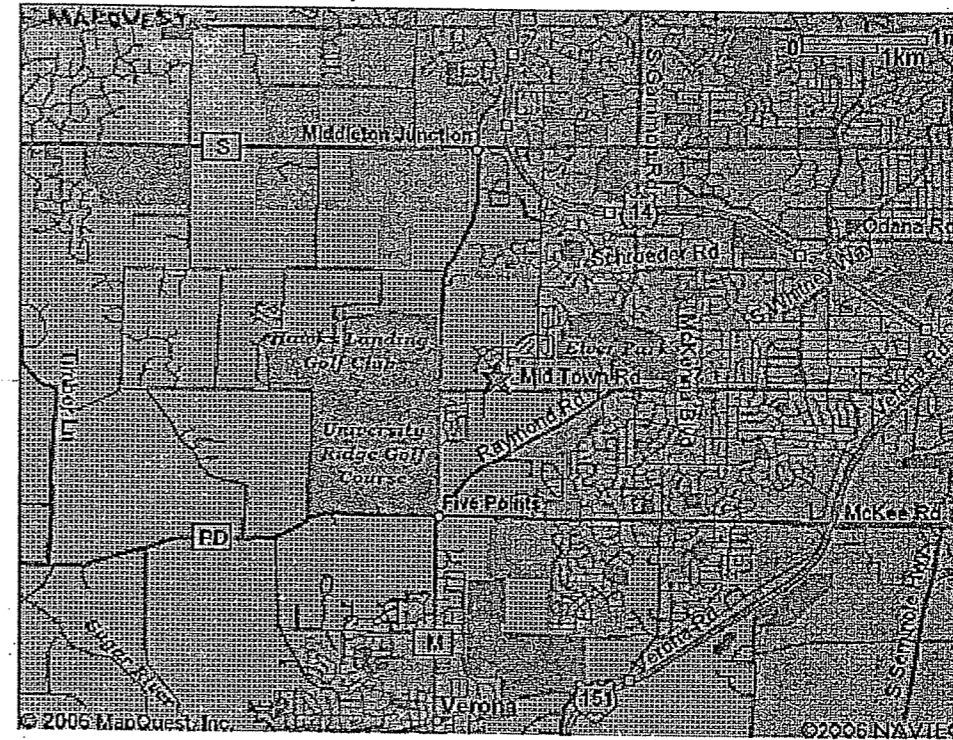
- Street Graphics Variance* (Fee required)

- Other _____

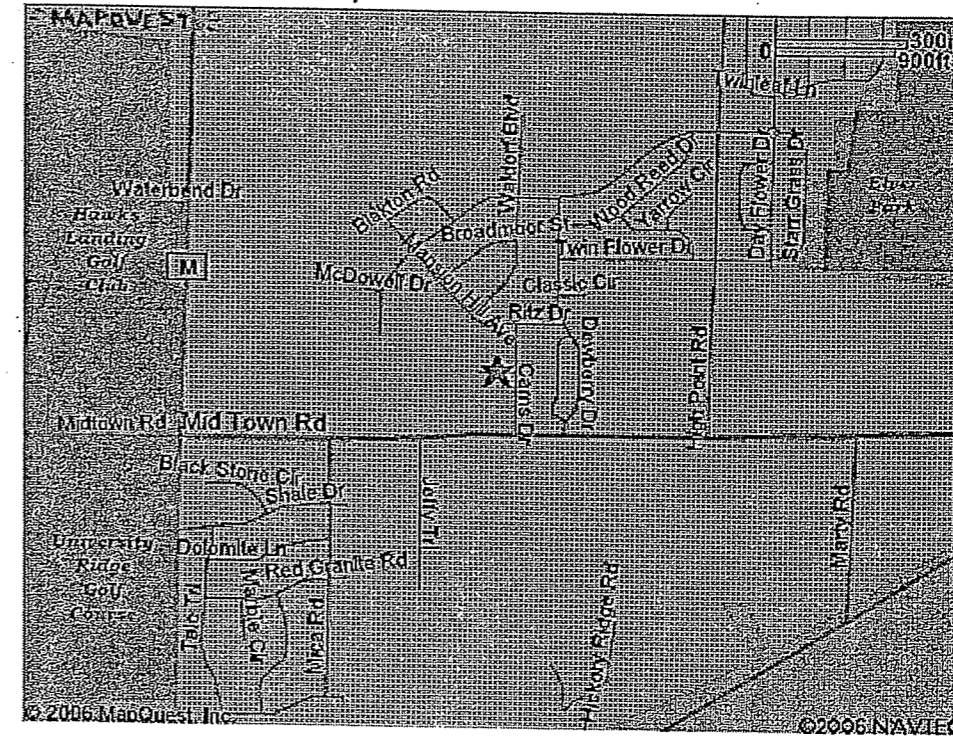


*Public Hearing Required (Submission Deadline 3 Weeks in Advance of Meeting Date)

★ [8000-8099] Mayo Dr
Madison, WI 53719, US



★ [8000-8099] Mayo Dr
Madison, WI 53719, US



DIMENSION IV-MADISON

Architecture, Engineering and Interior Design

313 West Beltline Hwy., Suite 161 Madison, WI 53713 Phone (608) 229-4444

LOT 90 MIDTOWN COMMON

Corner of Mayo Drive and Waldorf Boulevard, WISCONSIN 53719

Architecture & Engineering: Dimension IV - Madison, LLC, Madison, WI

Civil Engineer: Calkins Engineering, LLC

Landscaping Engineer: Zeigler Design

PROJECT DATA: 42 RESIDENTIAL CONDOMINIUM AND COMMERCIAL AREA
MIXED USE DEVELOPMENT

LOT SIZE: 54,826 ACRES 1.25
IMPERVIOUS AREA: 40,498 SF
GREEN AREA: 14,328 SF

PARKING DATA: BICYCLE AUTO
COVERED 30 46
SURFACE 12 38
TOTAL 42 84

BUILDING DATA:

LEVEL	AREA	USE
BASEMENT	17,815 SF	PARKING, MECHANICAL, AND STORAGE
FIRST	18,194 SF	8583 SF COMMERCIAL, 5 - 2BR RESIDENTIAL CONDOMINIUM
SECOND	18,701 SF	13 - 2BR RESIDENTIAL CONDOMINIUM
THIRD	18,701 SF	13 - 2BR RESIDENTIAL CONDOMINIUM
FOURTH	16,757 SF	9 - 2BR, 2 - 2BR / DEN RESIDENTIAL CONDOMINIUM
TOTAL	90,168 SF	

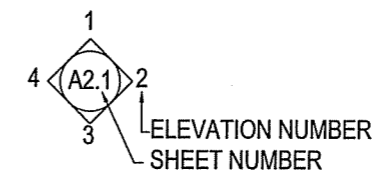
INDEX OF DRAWINGS

C1 - SITE GRADING, EROSION CONTROL AND SITE
L1 - LANDSCAPE PLAN

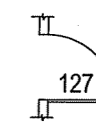
ARCHITECTURAL
A0.0 KEY PLAN
A0.1 KEY PLAN
A2.0 EXTERIOR ELEVATIONS

E1 - SITE PLAN
E2 - FIXTURE CUT SHEET

GRAPHIC SYMBOLS



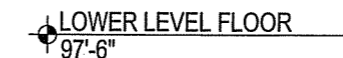
DOOR NUMBER



WINDOW TYPE

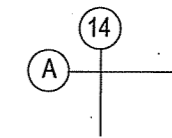
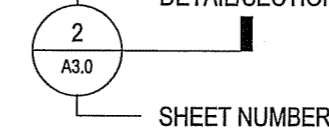


HEIGHT ELEVATION MARKER

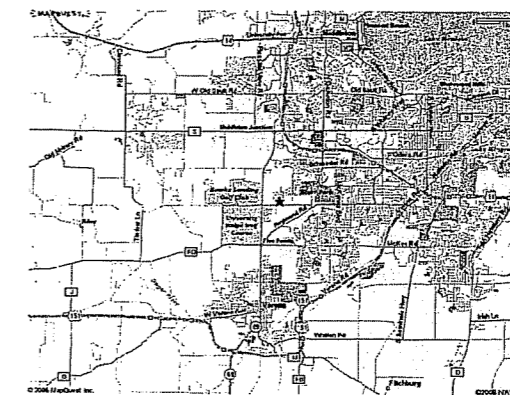
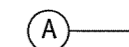


STRUCTURAL GRID

SECTION CUT/DETAIL REFERENCE
DETAIL/SECTION NUMBER



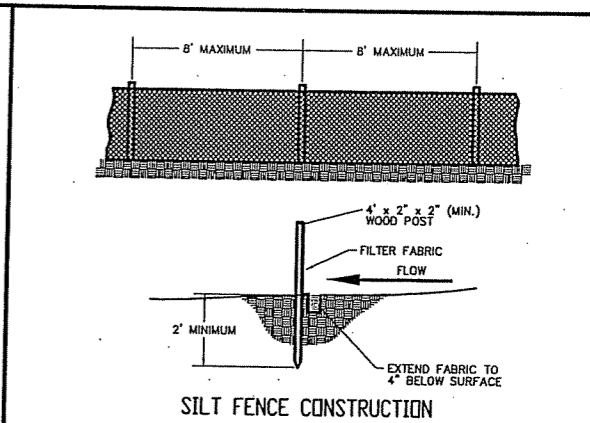
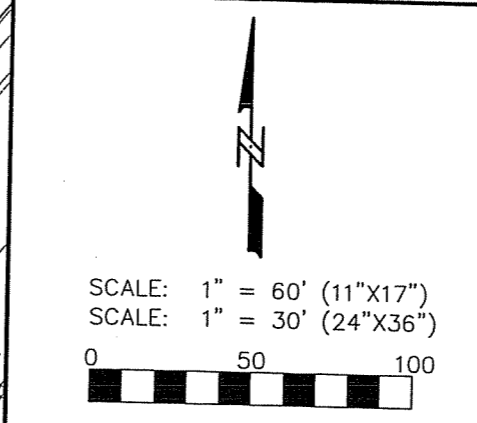
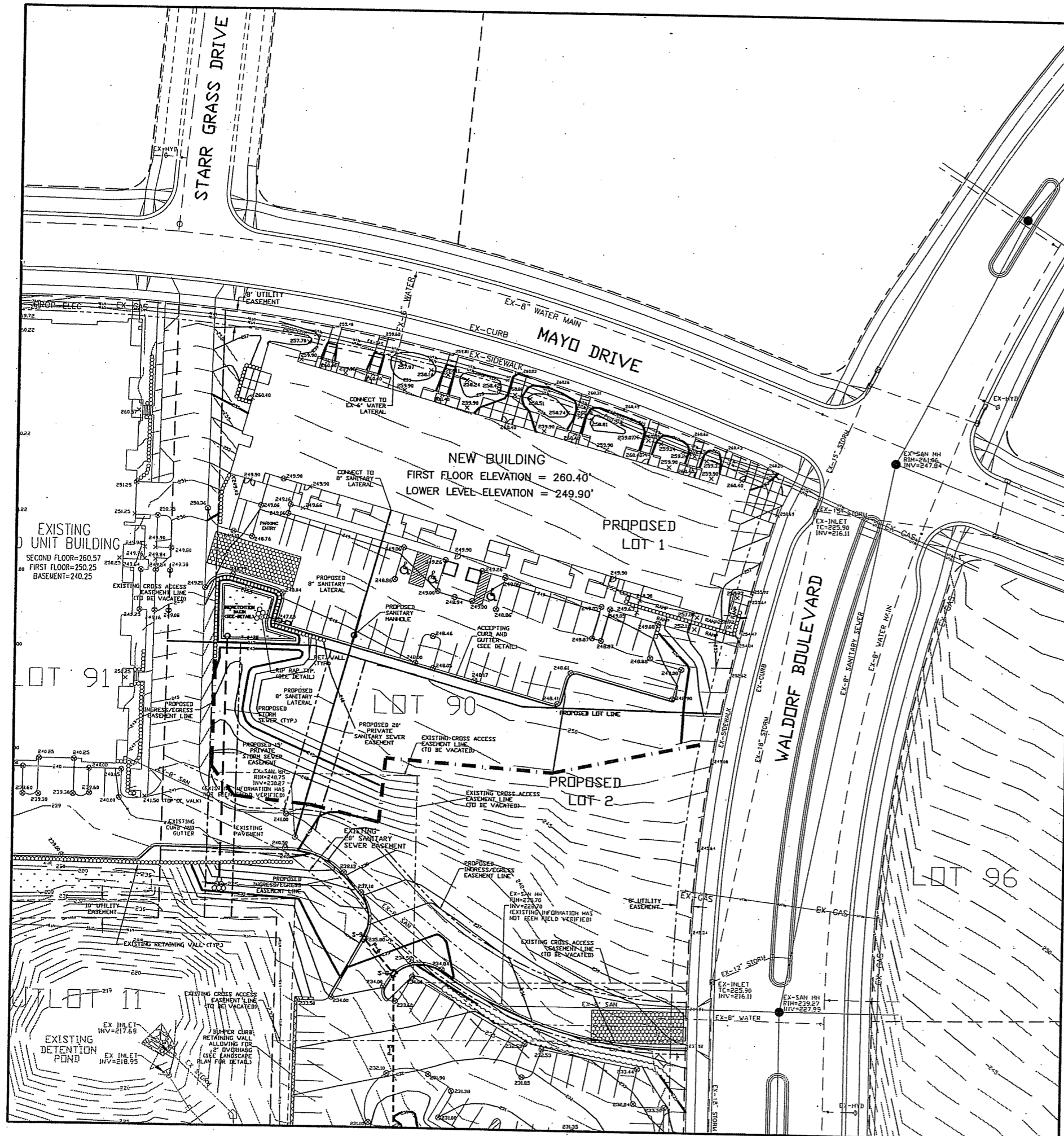
WALL TYPE



LOCATION MAP

URBAN DESIGN SUBMISSION
Dimension IV Project #: 06018 MAY 17, 2006

TSO.0



- LEGEND:**
- — — — — STORM SEWER
 - - - - - SILT FENCE
 - [Pattern] STONE CONSTRUCTION ENTRANCE
 - [Pattern] BIORETENTION BASIN
 - ×1000.00 = PROPOSED SIDEWALK/GROUND GRADE
 - ⊗1000.00 = PROPOSED PAVEMENT GRADE
 - ×1000.00 = EXISTING SPOT GRADE

GENERAL NOTES:

STONE CONSTRUCTION ENTRANCE SHALL BE INSTALLED PRIOR TO ANY GRADING OPERATIONS AND MAINTAINED UNTIL GRAVEL BASE COURSE IS INSTALLED.

SILT FENCE SHALL BE INSTALLED PRIOR TO COMMENCING GRADING OPERATIONS. SILT FENCE SHALL BE MAINTAINED THROUGHOUT THE CONSTRUCTION PHASE OF THIS PROJECT.

TRACKED MATERIAL TO ADJACENT STREETS SHALL BE COLLECTED AT THE END OF EACH WORK DAY OR AS DIRECTED BY THE CITY.

CONTRACTOR SHALL PERFORM EROSION CONTROL INSPECTIONS WEEKLY AND AFTER EVERY RAINFALL EVENT EXCEEDING 0.5\"/>

INLET SEDIMENTATION FILTERS SHALL BE INSTALLED AT ALL INLET LOCATIONS, AND ADJACENT DOWNSTREAM INLETS.

ALL WORK WITHIN CITY RIGHT OF WAY SHALL BE PERFORMED BY A CITY LICENSED CONTRACTOR.

CONTRACTOR SHALL OBTAIN A STREET EXCAVATION PERMIT AS NECESSARY PRIOR TO CONSTRUCTION.

CONTRACTOR SHALL OBTAIN ALL NECESSARY SEWER CONNECTION PERMITS AND SEWER PLUGGING PERMITS PRIOR TO CONSTRUCTION.

ALL SANITARY SEWER, WATER MAIN, AND STORM SEWER SHALL BE CONSTRUCTED PER THE CITY OF MADISON STANDARD SPECIFICATIONS FOR PUBLIC WORKS CONSTRUCTION.

CONTRACTOR SHALL FIELD VERIFY THE SIZE, TYPE, LOCATION, AND ELEVATION OF EXISTING UTILITIES.

PRIVATE STORM SEWER SHALL BE ADS N-12.

PRIVATE WATER MAIN AND SERVICES SHALL BE DUCTILE IRON (AWWA C-151-CLASS 52).

PRIVATE SANITARY SEWER AND LATERALS SHALL BE PVC (ASTM D3034-SDR35).

PUBLIC SIDEWALK AT DRIVEWAY LOCATIONS SHALL BE 7\"/>

BUILDING PLUMBER SHALL VERIFY SIZE, SLOPE, AND EXACT LOCATION OF PROPOSED SANITARY LATERALS AND WATER SERVICES PRIOR TO INSTALLATION.

PUMPING OF WATER FROM FOUNDATION AREA DURING CONSTRUCTION SHALL NOT EXCEED A RATE OF 70 GALLONS PER MINUTE. SUMP PUMP SHALL BE PLACED ON A CLEAR STONE BEDDING AND A CLOTH/MESH SOCK SHALL BE PLACED ON THE OUTLET END OF THE PIPE TO CONTROL SEDIMENT LOSS.

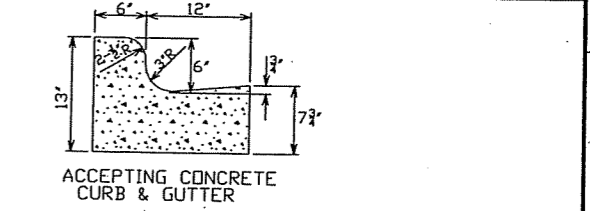
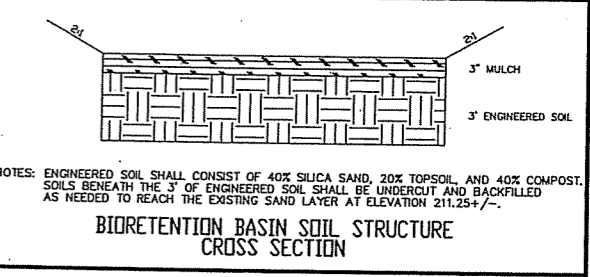
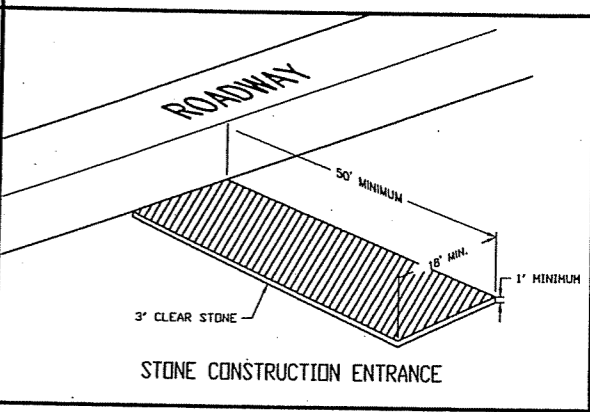
DEVELOPER SHALL REPAIR/REPLACE ANY SIDEWALK, CURB, OR PAVEMENT DAMAGED DURING CONSTRUCTION OR AS DEEMED NECESSARY BY THE CITY ENGINEER.

CONTOURS AND SPOT GRADES ASSOCIATED WITH LOT 91 AND PROPOSED LOT 2 CONSTRUCTION ARE PROPOSED AND HAVE NOT BEEN FIELD VERIFIED.

BIORETENTION BASIN SHALL BE CONSTRUCTED AFTER PARKING LOT GRAVEL BASE COURSE INSTALLATION TO PREVENT IT FROM CLOGGING WITH SEDIMENT.

ROOTSTOCK AND PLUGS SHALL BE USED TO ESTABLISH WATER TOLERANT VEGETATION IN BIORETENTION BASINS AS SPECIFIED IN THE PLANTING PLAN.

GRASS AREAS SHALL RECEIVE FERTILIZER, SEED, AND MULCH WITHIN 7 DAYS OF COMPLETION OF GRADING. SEED SHALL BE MIXTURE 40 IN ACCORDANCE WITH SECTION 630 OF DOT SPECIFICATIONS AND SHALL BE APPLIED AT A RATE OF 3 POUNDS PER 1,000 SQUARE FEET. FERTILIZER SHALL MEET THE REQUIREMENTS THAT FOLLOW: NITROGEN, NOT LESS THAN 16%; PHOSPHORIC ACID, NOT LESS THAN 8%; POTASH, NOT LESS THAN 8%. FERTILIZER SHALL BE APPLIED AT A RATE OF 7 POUNDS PER 1,000 SQUARE FEET. MULCHING SHALL CONSIST OF STRAW AT A RATE OF 1.5 TONS PER ACRE.



GENERAL NOTES:

LATERAL CONTRACTION JOINTS SHALL BE PLACED AT INTERVALS OF NOT MORE THAN 15\"/>

EXPANSION JOINTS SHALL BE PLACED TRANSVERSELY AT RADIUS POINTS ON CURVES OF RADIUS 200\"/>

IN ALL CASES, CONCRETE CURB & GUTTER SHALL BE PLACED ON THOROUGHLY COMPACTED CRUSHED STONE.

CURB AND GUTTER

PIPE DIA. (INCH)	APPROX. WEIGHT (LBS)
12	24
12	48
12	72
15	36
15	60
15	84
18	42
18	72
18	96
21	42
21	72
21	96
24	48
24	72
24	96
27	54
27	72
27	96
30	60
30	84
30	108
36	72
36	96
36	120
42	78
42	96
42	120
48	84
48	108
48	132
54	90
54	108
54	132
60	96
60	120
60	144
66	102
66	120
66	144
72	108
72	120
72	144

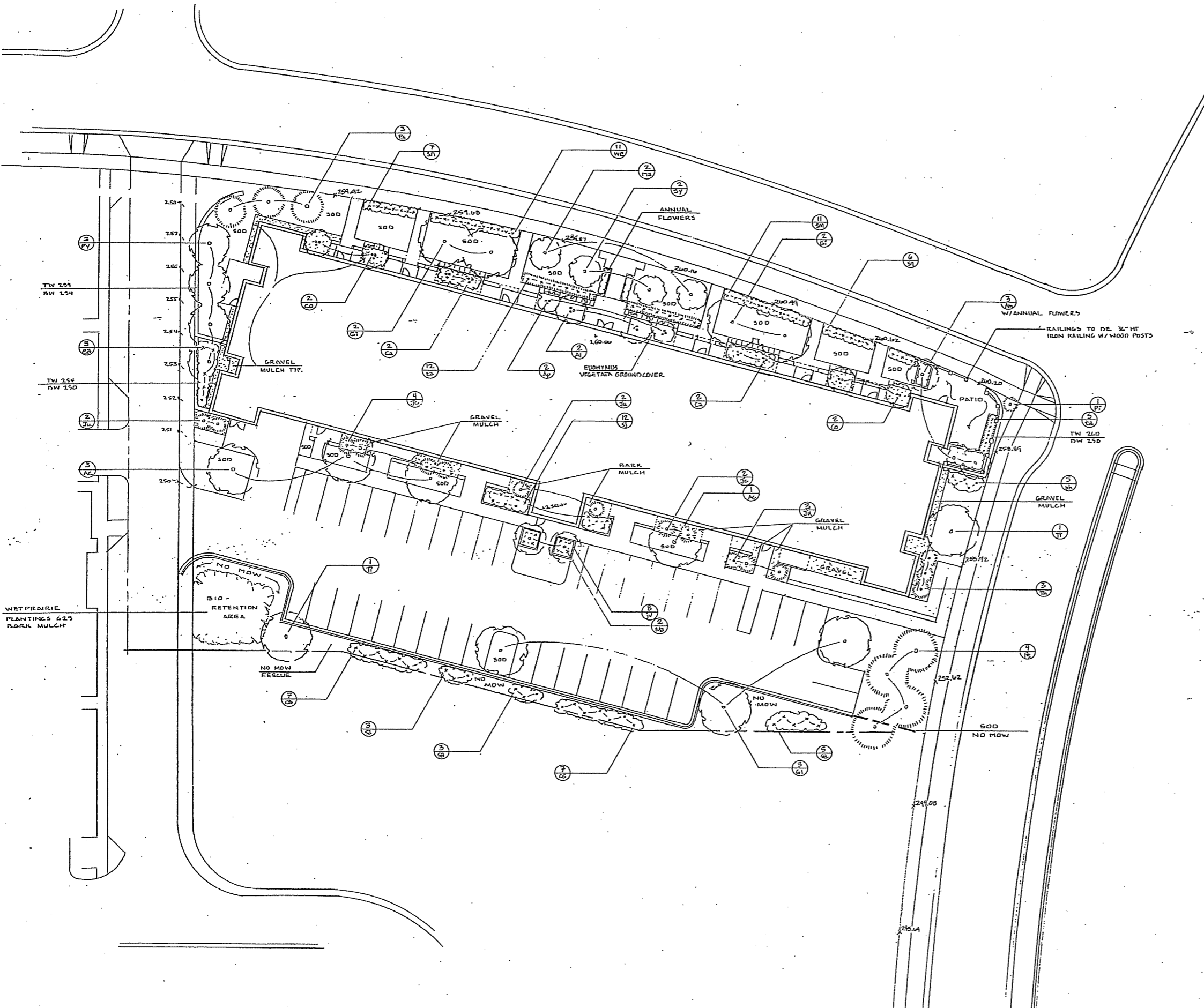
NOTES:

1) PIPES 36\"/>

2) PIPES 36\"/>

3) RIP RAP SHALL BE PLACED WITH A SLURRY GROUT ICE ON AN UNFINED RIP RAP SURFACE. SLURRY GROUT SHALL BE TYPE 3, SLURRY PER STANDARD SPECIFICATIONS.

4) TYPICAL INSTALLATION SHALL BE GOVERNED BY THE CURB AND GUTTER SPECIFICATIONS OF A SINGLE PIPE.



Planting Schedule for Parcel A, Lot 90, Mid Town Commons
As per Landscape Plan 5-10-06
Ziegler Design Associates

Deciduous Canopy Trees				
Sym.	Qty.	Size	Rt Cond	Botanical Name, Common Name
Ac	4	2" cal	B&B	<i>Acer freemanii</i> , Armstrong Red Maple
Gi	4	2" cal	B&B	<i>Ginkgo biloba</i> , Male Ginkgo
Gl	4	2" cal	B&B	<i>Gleditsia triacanthos</i> , Honeylocust
Tl	2	2" cal	B&B	<i>Tilia x 'Redmond'</i> , Redmond Linden

Evergreen Trees				
Sym.	Qty.	Size	Rt Cond	Botanical Name, Common Name
Jc	6	5'	B&B	<i>Juniperus chinensis 'Hooks #6'</i> , Hooks Juniper
Ju	7	5'	B&B	<i>Juniperus chinensis 'Mountbatten'</i> , Mountbatten Juniper
Pg	3	5'	B&B	<i>Picea glauca 'Densa'</i> , Black Hills Spruce
Pl	1	36"	B&B	<i>Pinus aristata</i> , Bristlecone Pine
Ps	4	5'	B&B	<i>Pinus strobus</i> , White Pine
Th	3	5'	B&B	<i>Thuja occidentalis 'Nigra'</i> , Dark Green Arborvitae

Deciduous Small Trees				
Sym.	Qty.	Size	Rt Cond	Botanical Name, Common Name
Ap	2	4-5'	B&B	<i>Acer palmatum</i> , 'Bloodgood' Japanese Maple
Al	2	6'	B&B	<i>Amelanchier laevis</i> , Allegheny Serviceberry
Am	3	2" cal	B&B	<i>Amelanchier laevis</i> , 'Cumulus' Serviceberry
Ca	4	5'	B&B	<i>Carpinus caroliniana</i> , Musclewood
Co	4	5'	B&B	<i>Cornus alternifolia</i> , Pagoda Dogwood
Ma	4	2" cal	B&B	<i>Malus x species</i> , Prairiefire Crabapple
Py	4	2" cal	B&B	<i>Pyrus calleryana</i> , Bradford Pear
Sy	2	2" cal	B&B	<i>Syringa reticulata</i> , Japanese Tree Lilac

Deciduous Shrubs				
Sym.	Qty.	Size	Rt Cond	Botanical Name, Common Name
cs	14	24-30"	cont	<i>Cornus sericea</i> , Bailey Redtwig Dogwood
ea	5	36"	B&B	<i>Euonymus alatus</i> , Burning Bush
ph	5	24-30"	cont	<i>Physocarpus opulifolius 'Diablo'</i> , Diablo Ninebark
sa	11	24-30"	cont	<i>Sambucus canadensis</i> , Elderberry
sj	12	18-24"	cont	<i>Spiraea japonica</i> , 'Anthony Waterer' Spirea
sn	16	24"	cont	<i>Spiraea nipponica</i> , 'Snowmound' Spirea
sm	11	24"	cont	<i>Syringa meyeri 'Palibin'</i> , Dwf. Korean Lilac
we	11	18"	cont	<i>Weigela florida</i> , Dark Horse Weigela

Evergreen Shrubs				
Sym.	Qty.	Size	Rt Cond	Botanical Name, Common Name
eu	50	1 gal	cont	<i>Euonymus fortunei 'Vegetus'</i> , Big Leaf Wintercreeper
ju	8	15-18"	cont	<i>Juniperus virginiana 'Gray Owl'</i> , Grey Owl Juniper
ta	12	18-24"	B&B	<i>Taxus x media 'Tauntonii'</i> , Taunton Yew

Grasses, Forbs				
Sym.	Qty.	Size	Rt Cond	Botanical Name, Common Name
-	625	2 1/2" plug	cont	Assorted wet prairie species

Field Notes

- LAWN AREAS**
- All lawn areas and tree way area to be sod.
 - All disturbed areas to the south of parking to be no-mow fescue seed mix.
- MULCHES**
- All individual trees and shrub beds to receive bark mulch unless otherwise specified.
 - All bark mulch to be shredded hardwood, 3" minimum depth.
 - All gravel mulch to be 1/2" clear Dresser Trap Rock or equivalent; 3" depth minimum on weed barrier fabric with plastic edging as needed.
- WALLS**
- All walls to be modular concrete block, Keystone, Versa-Lok or equivalent.

PARCEL A, LOT 90
MID TOWN COMMONS
Landscape Planting Plan
Mayo Drive and Waldorf Blvd., Madison, WI

ZIEGLER DESIGN ASSOCIATES
4697 Capitol View Road
Middleton, WI 53562
608.831.5098
Drawn by: SGZ/MLG 5-10-06

Drawing Scale: 1" = 20'-0"

0 10' 20' 40'

NORTH

**DIMENSION IV
MADISON**

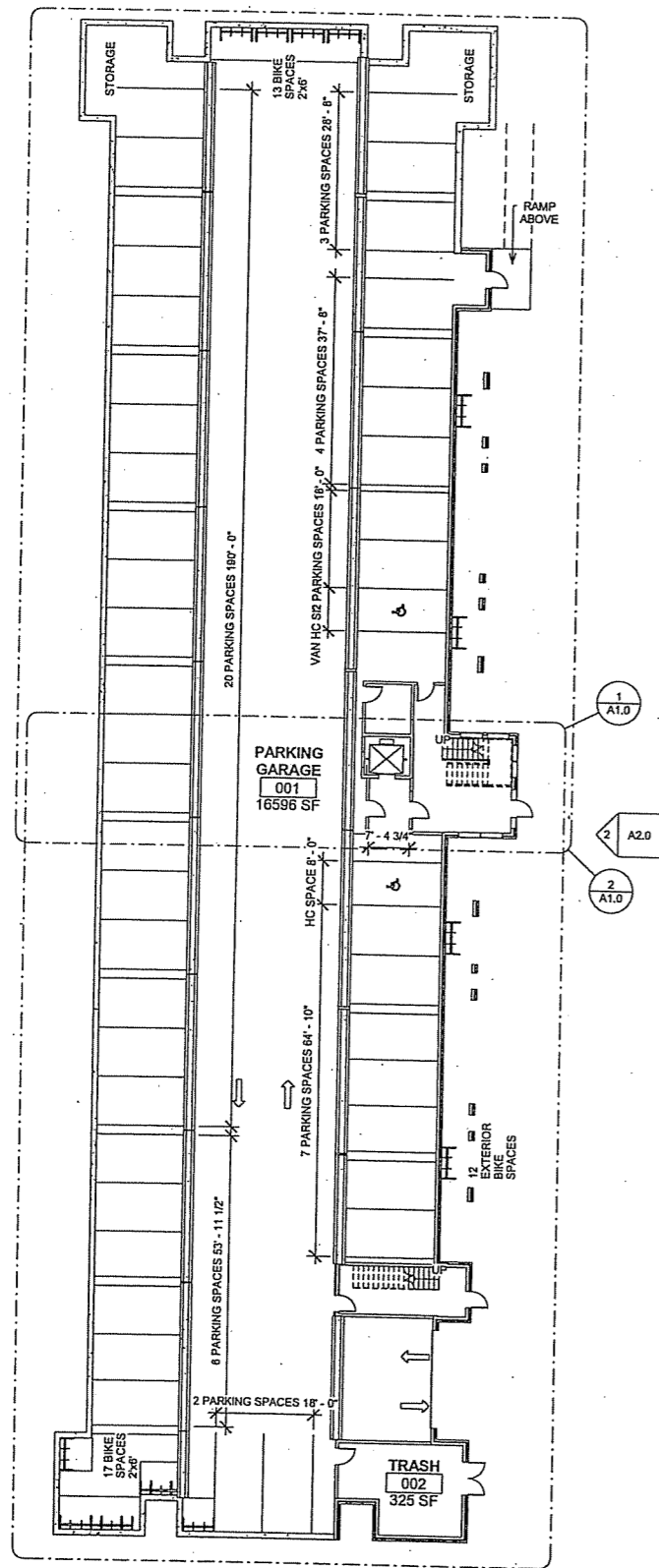
Architecture
Engineering
Interior Design

313 West Bellline Hwy., Suite 161
Madison, WI 53713
phone (608) 229-4444 fax (608) 229-4445

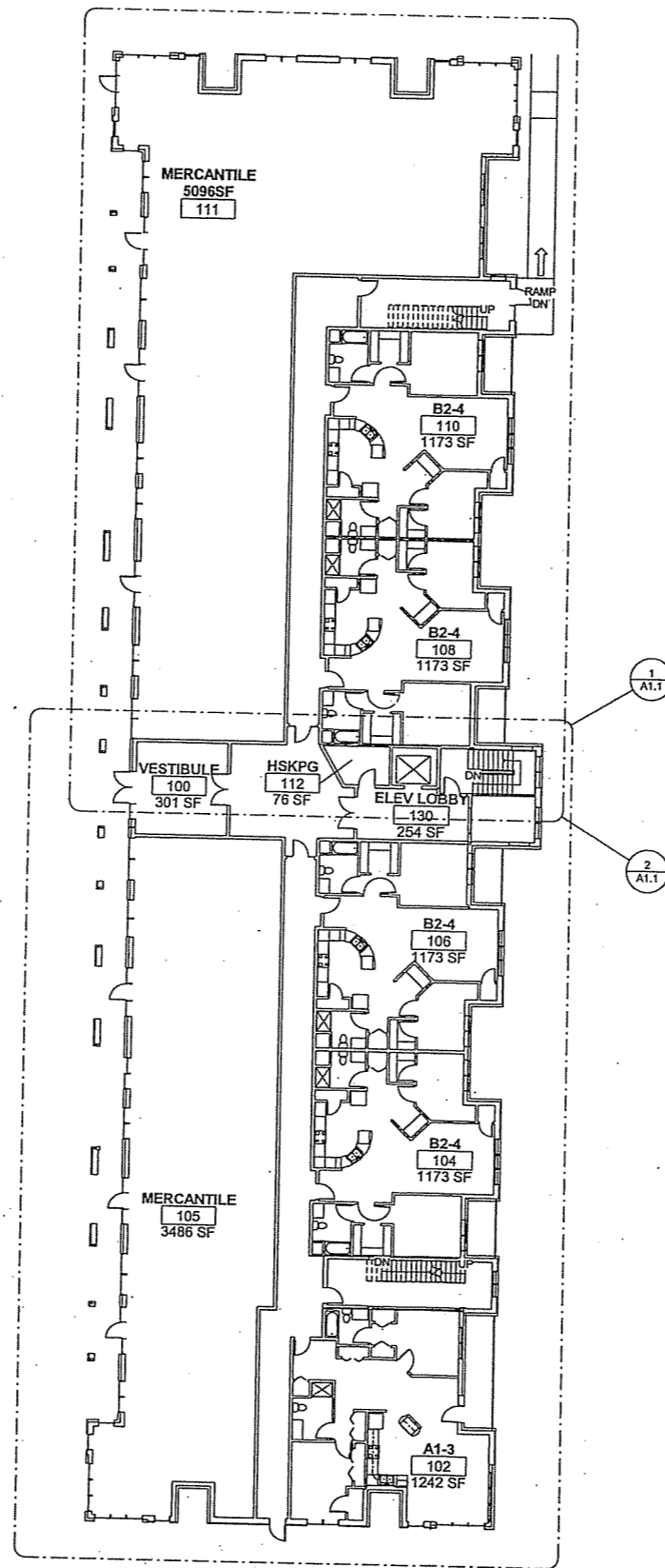
CONSULTANTS:

LOT 90 MIDTOWN

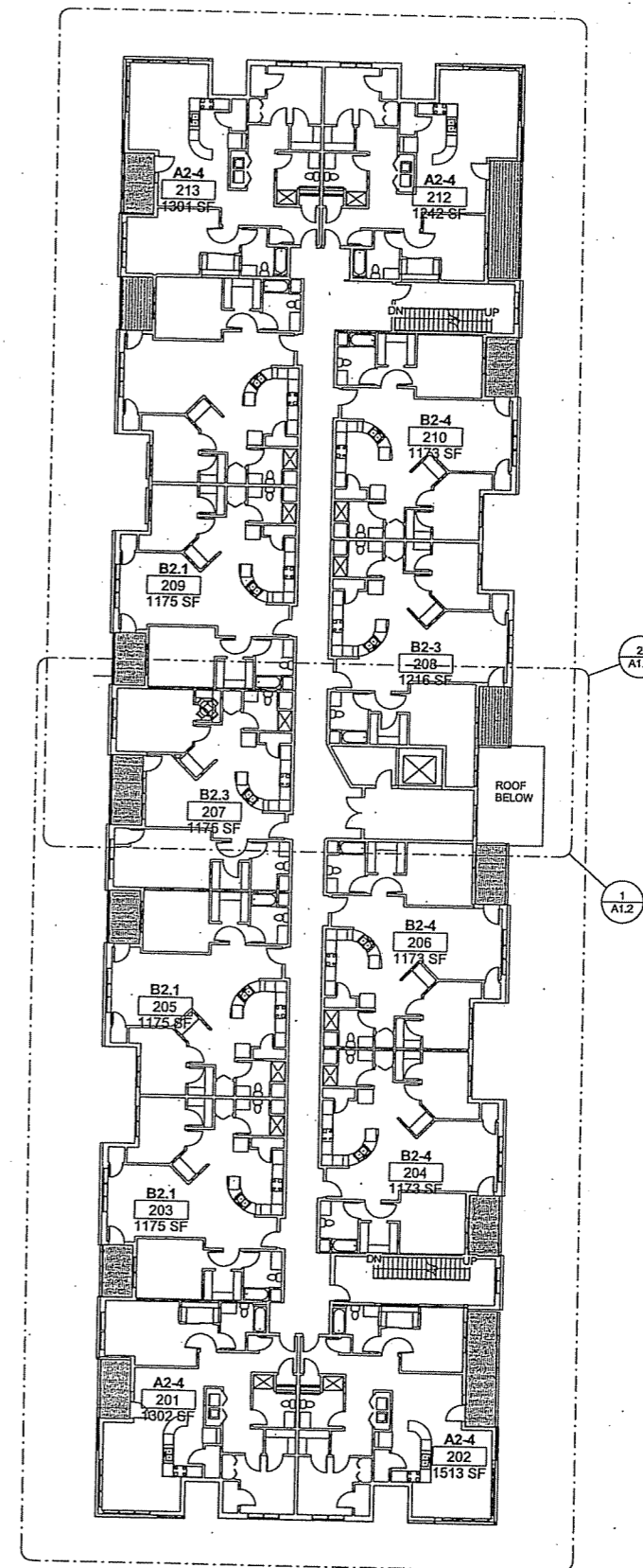
CORNER OF MAYO DRIVE &
WALDORF BLVD
MADISON, WI 53719



1 BASEMENT FLOOR PLAN
1/16" = 1'-0"



2 FIRST FLOOR PLAN
1/16" = 1'-0"



3 SECOND FLOOR PLAN
1/16" = 1'-0"

DATE OF ISSUE:	MAY 10 2006
REVISIONS:	SIP/GDP SUBMISSION
PROJECT #	06018

KEY PLANS

A0.0

**DIMENSION IV
MADISON**

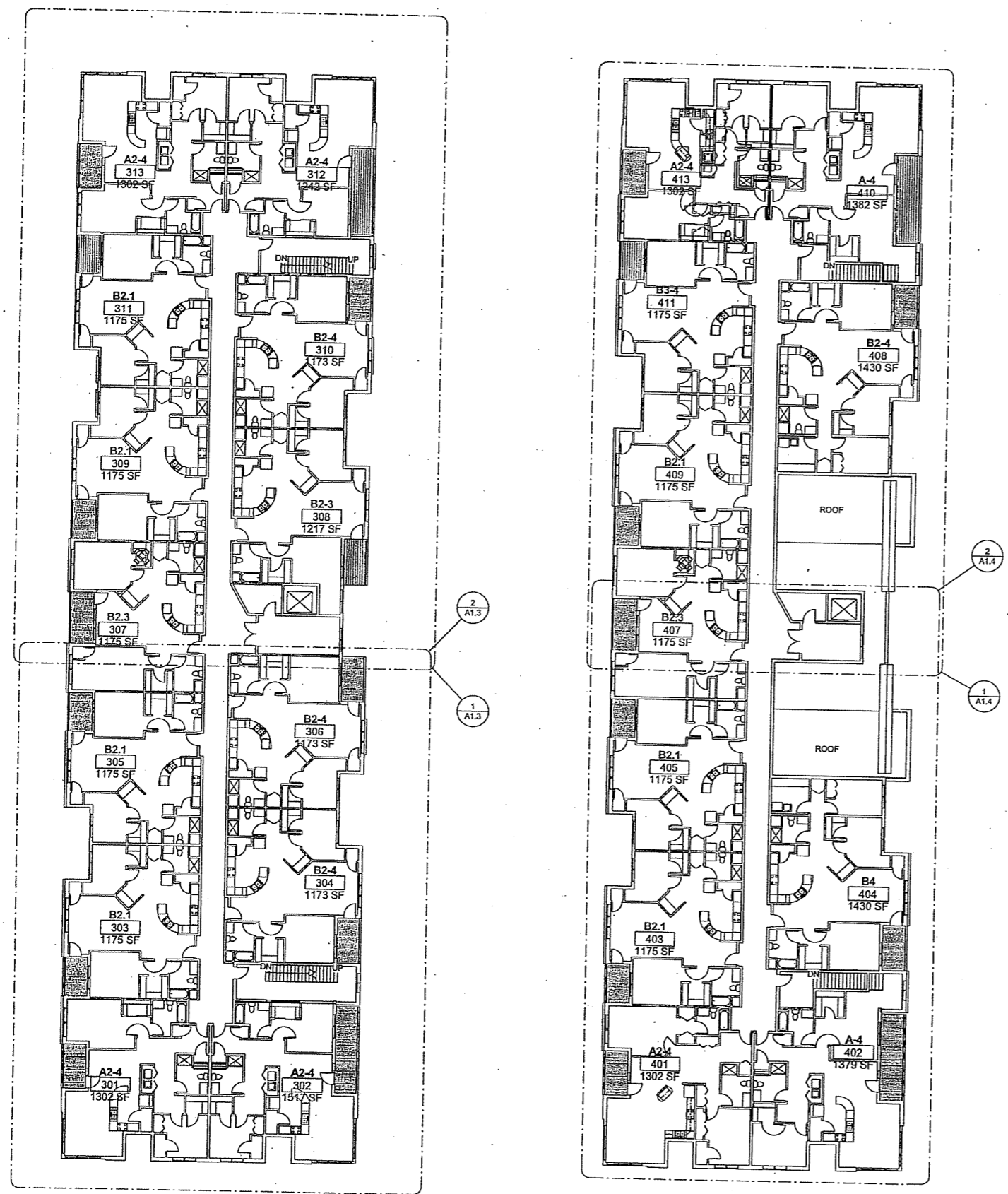
*Architecture
Engineering
Interior Design*

313 West Bellline Hwy., Suite 161
Madison, WI 53713
phone (608) 229-4444 fax (608) 229-4445

CONSULTANTS:

LOT 90 MIDTOWN

CORNER OF MAYO DRIVE &
WALDORF BLVD
MADISON, WI 53719



① THIRD FLOOR PLAN
1/16" = 1'-0"

② FOURTH FLOOR PLAN
1/16" = 1'-0"

DATE OF ISSUE: MAY 10 2006

REVISIONS:

PROJECT # 06018

KEY PLANS

DIMENSION IV MADISON

Architecture
Engineering
Interior Design

313 West Bellline Hwy., Suite 161
Madison, WI 53713
phone (608) 229-4444 fax (608) 229-4445

CONSULTANTS:

LOT 90 MIDTOWN

CORNER OF MAYO DRIVE &
WALDORF BLVD
MADISON, WI 53719



② South
3/32" = 1'-0"

COMPOSITE BOARD FACIA
SHINGLE ROOF
METAL AWNING
STAINED ARBOR
ALUMINUM FASCIA SOFFIT

DOUBLE HUNG WINDOWS

COMPOSITE SIDING
BRICK #1
COMPOSITE BOARD
BRICK #2
SPLIT FACE CMU

ALUMINUM STOREFRONT



① North
3/32" = 1'-0"

Roof 44'-0"
Fourth Floor 33'-0"
Third Floor 22'-6"
Second Floor 12'-0"
First Floor 0'-0"



③ West
3/32" = 1'-0"



④ East
3/32" = 1'-0"

DATE OF ISSUE: MAY 10 2006

REVISIONS:

PROJECT # 06018

Exterior Elevations

LitePRO 2.017 lighting design software

CALCULATION SUMMARY										
AREA NAME	DIMENSIONS	GRID / TYPE	# FTSSPAC	GROUP	AVE	MAX	MIN	MAX/MIN	AVE/MIN	
Entire Site	495.00x705.00ft	Parking / H-H	413 175	10.00 10.00	<+> <->	1.20 1.07	2.89 2.74	0.28 0.13	10.48 21.41	4.34 8.39

LUMINAIRE SCHEDULE						
TYP	SYMBOL	DESCRIPTION	LAMP	LUMENS	MOUNTING/BALLAST	LLF QTY
SPA	♠	COOPER LIGHTING (1) "254" STM-250-MH-X(X)4S		14000		0.90 9
SRA	♠	COOPER LIGHTING (1) "252" STM-250-MH-X(X)2S		14000		0.90 4

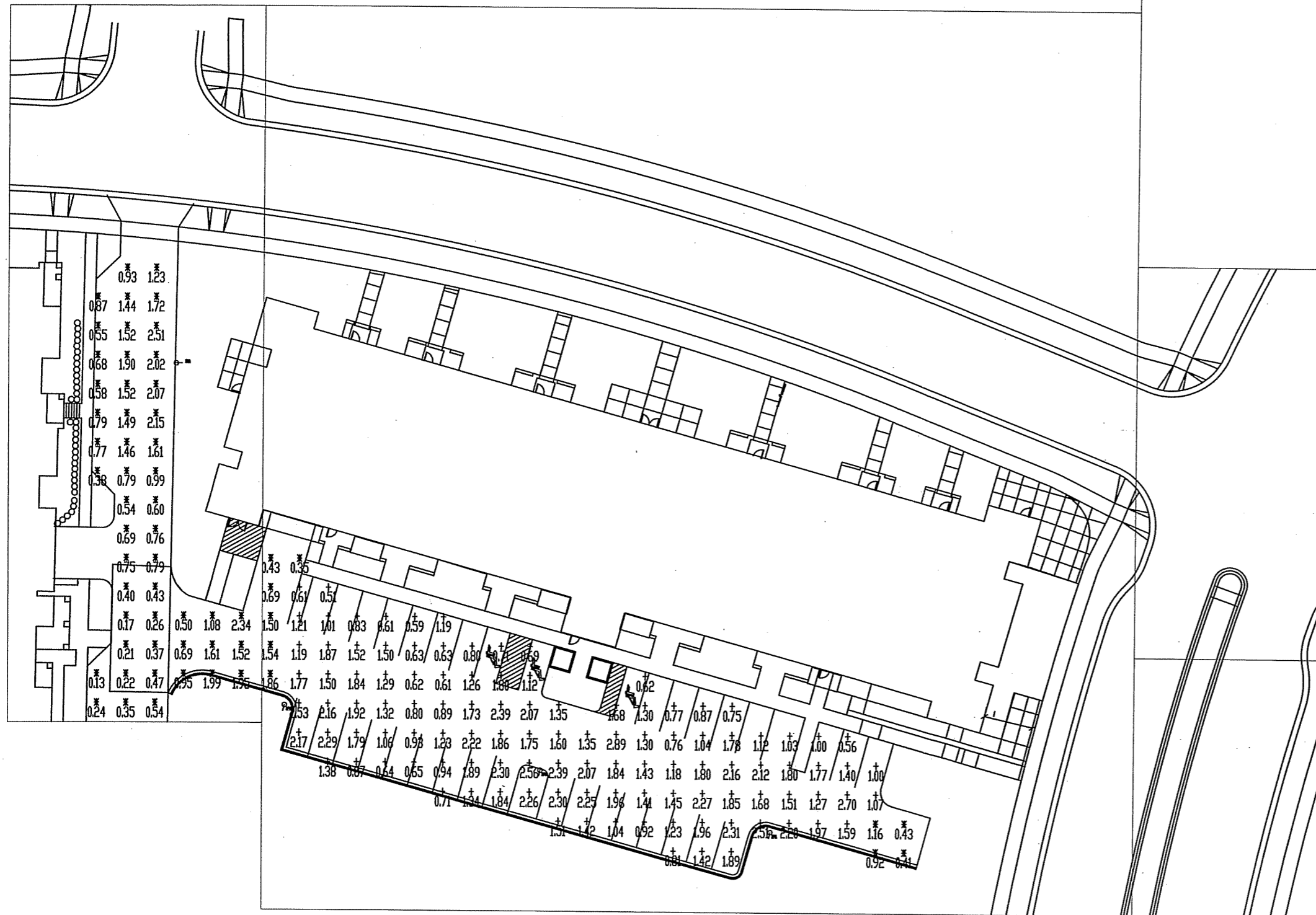
Calculations completed for:
Madison Electric INC.
Contact: Ed @ (608)669-1971

Calculations completed by:
Enterprise Lighting LTD.
Contact: Dustin Blotz @ (608)838-7555

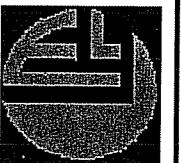
Additional Lighting Specifications and Notes:
1. Lighting calculations represent proposed lighting levels using the fixtures as specified below. Selection of a different product family will require a revision of these calculations.

2. Complete fixtures model numbers shall be:
SPA STM-175WMHMT-4S-COLOR-L/VA1055-COLOR
SRA STM-175WMHMT-2S-COLOR-L/VA1055-COLOR

Fixtures shall be installed on 25-foot square steel poles. Poles shall be painted to match.



SITE PLAN
E1



Description

STRUT enhances the rectilinear form with a housing that blends effortlessly to traditional or ambitious architectural environments. STRUT brings two housing sizes and a fluid form to match the culture in which it resides.

Catalog #		Type	
Project			
Comments		Date	
Prepared by			

SPECIFICATION FEATURES

A ... Housing

Two-piece heavy-wall, die-cast aluminum housing maintains a nominal .125 wall thickness and utilizes continuous silicone gasketing between castings for a forbidding seal. Optional strut rod supports manufactured of machined aluminum attach to housing top with recessed stainless steel fasteners.

B ... Door

Heavy-wall, die-cast aluminum door maintains a nominal .125 thickness. Continuous silicone gasketing provides IP66 compliant optical cavity. Toolless entry to housing is provided via two (2) flush mount quick release latches. Concealed hinging allows door to be removed from housing without the use of tools.

C ... Lens

Impact resistant 1/8" thick tempered clear or optional frosted flat glass for concealment of lamp image.

D ... Optical Systems

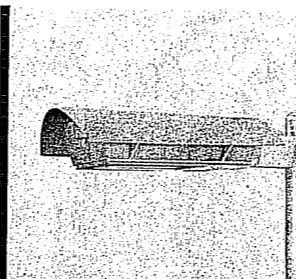
Choice of five (5) high efficiency segmented optical systems constructed of premium 95% reflective anodized aluminum sheet. Optical segments are rigidly mounted inside a thick gauge aluminum housing for superior protection. All segment faces are clean of rivet heads, tabs, or other means of attachment which may cause streaking in the light distribution. All reflector modules feature toolless removal, quick disconnect wiring plugs, and are toolless field rotatable in 90° increments. Medium housing (STM) optics feature mogul-base lampholders for HID lamp sources.

E ... Electrical Tray

Ballast and related electrical components are mounted to a toolless release reinforced one-piece, die-cast aluminum power tray. Quick disconnects allow tray to be completely removed from housing providing ample hand and tool room for attachment of luminaire during installation.

F ... Finish

Housing and arm finished in a 5 stage premium TGIC polyester powder coat paint, 2.5 mil nominal thickness for superior protection against fade and wear. Standard colors include black, bronze, grey, white, dark platinum, and graphite metallic. RAL and custom color matches available. Consult your INVUE Lighting Systems Representative for more information.

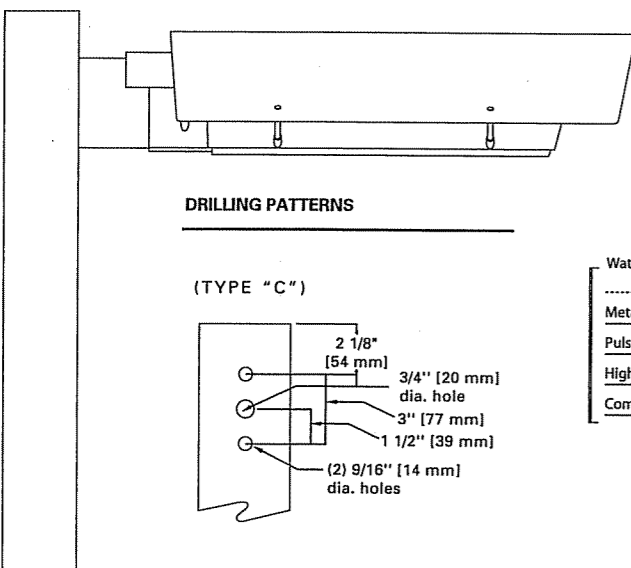


STM STRUT SITE MEDIUM

114-400W
Metal Halide
Pulse Start Metal Halide
High Pressure Sodium
Compact Fluorescent

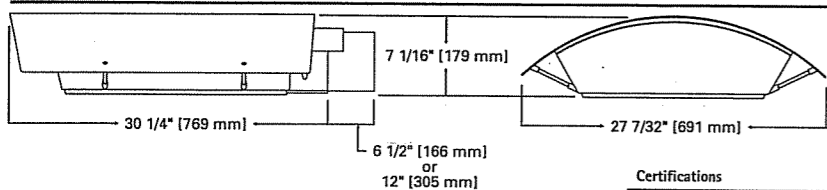
ARCHITECTURAL
AREA LUMINAIRE

DARK SKY COMPLIANT **FCO Full Cutoff**



Wattage Table	
STM	
Metal Halide	175, 250, 400W
Pulse Start Metal Halide	250, 320, 350, 400W
High Pressure Sodium	150, 250, 400W
Compact Fluorescent	(2) 57, (2) 60W, (2) 70W, (2) 85W, (2) 120W

DIMENSIONS



Certifications			
IP66 Rated	U.L. 1598 Listed	3G Vibration Tested	FCO Full Cutoff
CSA Listed	40°C Ambient	ISO 9001	

Specifications and Dimensions subject to change without notice.
Consult your representative for additional options and finishes.

Shipping DATA (approx.)
Net Weight (lbs.): 51
Volume (cu. ft): 3.18

AVU050980

ORDERING INFORMATION

Sample Number: STM-400-MH-120-4S-BK

Product Family
STM: Strut Site Medium

Lamp Wattage

- HID²
- 150: 150W
- 175: 175W
- 250: 250W
- 320: 320W³
- 350: 350W³
- 400: 400W⁴
- Compact Fluorescent
- 114: (2) 57W⁵
- 140: (2) 70W⁵

Lamp Type

- MH: Metal Halide
- MP: Pulse Start Metal Halide
- HPS: High Pressure Sodium
- CF: Compact Fluorescent⁶

Voltage⁷

- 120: 120V
- 208: 208V
- 240: 240V
- 277: 277V
- 347: 347V
- 480: 480V
- DT: Dual-Tap wired 277V⁸
- MT: Multi-Tap wired 277V⁹
- TT: Triple-Tap wired 347V¹⁰
- UNV: Universal

Optical System

- 2S: Type II
- 3S: Type III
- 4S: Type IV
- 5S: Type V
- SL: Forward Throw w/ Spill Light Eliminator

Standard Color¹¹

- BK: Black
- AP: Grey
- BZ: Bronze
- WH: White
- DP: Dark Platinum
- GM: Graphite Metallic

Structural

STR: Strut Rod Supports

Options

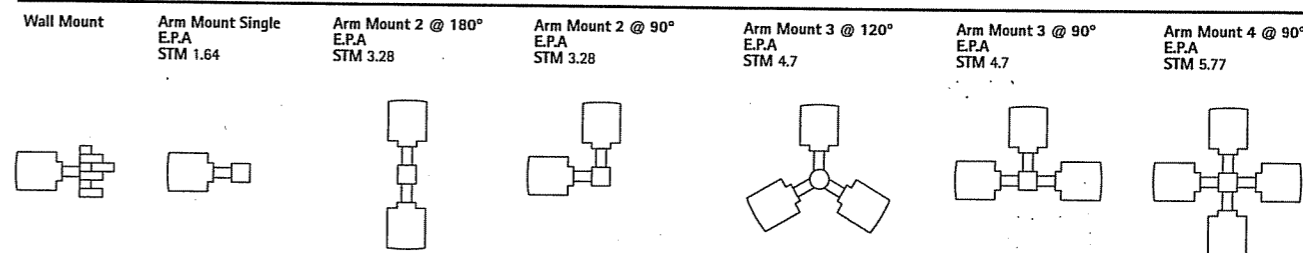
- F: Single Fuse
- FF: Double Fuse
- Q: Quartz Restrike¹²
- EM: Quartz Restrike w/ Time Delay¹²
- EM/SC: Emergency Separate Circuit¹²
- R: NEMA Twistlock Photocell Receptacle
- PC: Button Type Photocontrol
- DS: Dual Fluorescent Switching Control¹³
- HS: House Side Shield¹⁴
- FR: Frosted Flat Glass Lens
- L: Lamp Included

Accessories

- OA/RA1016: NEMA Photocontrol - Multi-Tap
- OA/RA1027: NEMA Photocontrol - 480V
- OA/RA1201: NEMA Photocontrol - 347V
- Mounting Accessories**
- VA1050-XX: Wall Mount Kit w/ 6-1/2" Arm¹⁵
- VA1055-XX: 6-1/2" Arm for Square Pole
- VA1069-XX: 12" Arm for Square Pole¹⁶
- VA1057-XX: 6-1/2" Arm for Round Pole
- VA1072-XX: 12" Arm for Round Pole¹⁶
- VA1018-XX: Mast Arm Adapter Kit
- Direct Mount Tenon Adapter**
- VA1033-XX: Single-arm Tenon Adapter (2-3/8" OD)
- VA1034-XX: 2@180 Tenon Adapter (2-3/8" OD)
- VA1035-XX: 3@120 Tenon Adapter (2-3/8" OD)
- VA1036-XX: 4@90 Tenon Adapter (2-3/8" OD)
- VA1037-XX: 2@90 Tenon Adapter (2-3/8" OD)
- VA1038-XX: 3@90 Tenon Adapter (2-3/8" OD)
- VA1039-XX: 2@120 Tenon Adapter (2-3/8" OD)
- VA1040-XX: Single-arm Tenon Adapter (3-1/2" OD)
- VA1041-XX: 2@180 Tenon Adapter (3-1/2" OD)
- VA1042-XX: 3@120 Tenon Adapter (3-1/2" OD)
- VA1043-XX: 4@90 Tenon Adapter (3-1/2" OD)
- VA1044-XX: 2@90 Tenon Adapter (3-1/2" OD)
- VA1046-XX: 2@120 Tenon Adapter (3-1/2" OD)
- VA1045-XX: 3@90 Tenon Adapter (3-1/2" OD)

- Notes:**
- Arms not included. See accessories.
 - All HID lamps are mogul-base.
 - 320W and 350W Pulse Start Metal Halide lamps only.
 - 400W Metal Halide requires reduced envelope ED28 lamp.
 - Dual 57W and dual 70W Compact Fluorescent lamp options available in Type 4S distribution only.
 - Compact Fluorescent ballasts contain internal fusing. No supplemental fusing is necessary. CF ballasts are 120 through 277V.
 - Products also available in non-US voltages and 50Hz for international markets. Consult factory for availability and ordering information.
 - Dual-tap is 120/277V wired 277V.
 - Multi-tap is 120/208/240/277V wired 277V.
 - Triple-tap is 120/277/347V wired 347V.
 - Custom and RAL color matching available upon request. Consult your INVUE Lighting Systems Representative for further information.
 - Quartz options not available with SL optic.
 - Dual switching requires dual Compact Fluorescent lamps. Allows independent switching control of each lamp through use of two electronic ballasts. Allows 50% power reduction when dual ballasts are independently wired and controlled.
 - House side shield not available on 5S and SL optics.
 - For use in down lighting applications only.
 - Use when mounting fixture heads at 90 degree increments.

MOUNTING VARIATIONS



Fixture Cut Sheet
E2