



**REVIEW OF
OUTREACH
PROGRAMS**

Cross Reference of Most Frequent Contacts with Drop-In Shelter Guests

Only 6.3% of
homeless
have
significant
contact with
law
enforcement

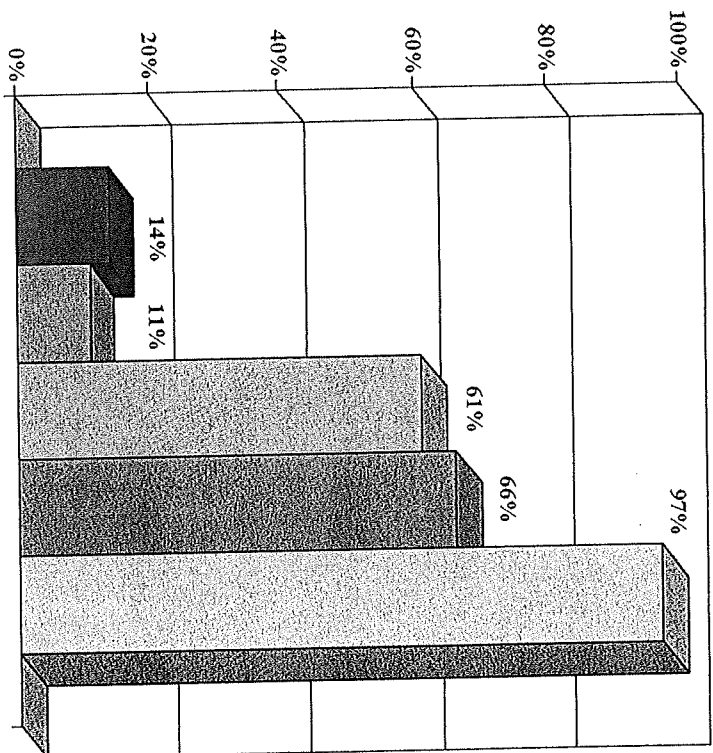
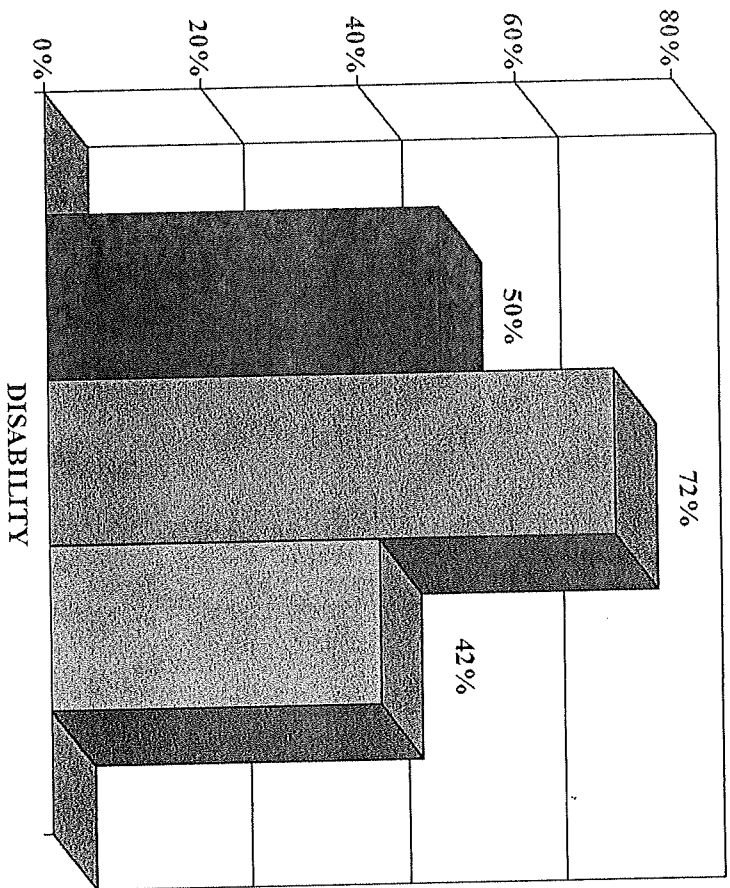


62% of
frequent
contacts are
homeless

OUTREACH PROGRAMS

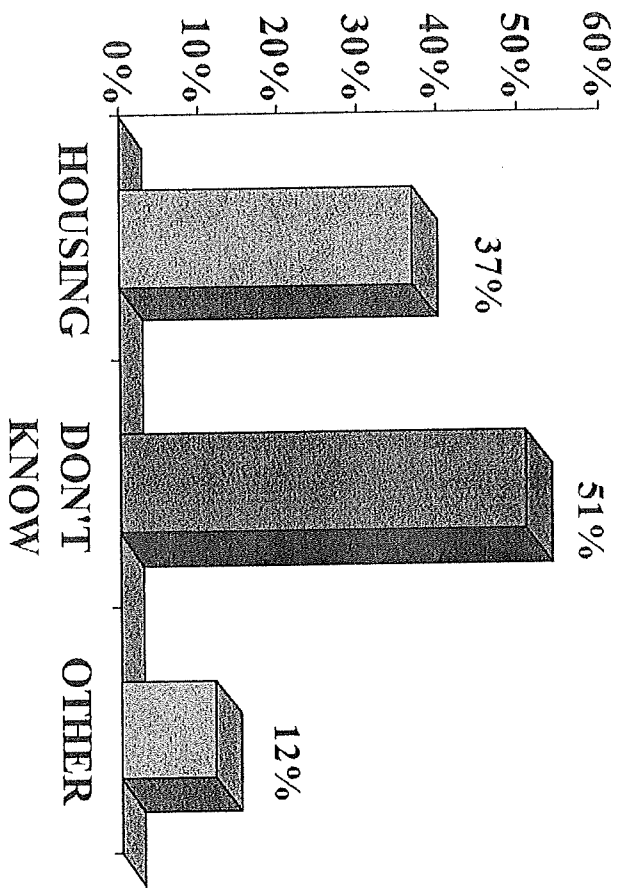
- Two programs: PATH & City Outreach Worker: total of four full-time staff positions with limited supervision funding
- PATH is collaborative program: Porchlight & Tellurian
- Total expenditures for both programs: \$160,000 per year – which includes mainly salaries & limited direct assistance
 - Funding sources: PATH is federal with state pass-through at \$120,000 and City Outreach Worker is \$40,000
 - PATH workers do outreach to seriously mentally & City Outreach can provide services to all with focus on State Street
- Limited funding for services beyond outreach – PATH can provide limited funding for housing & can do case management for up to 3 months while City Outreach has 6 months
- Recent expansion to include HEALTH psychiatric nurse services

PERSONS SERVED BY OUTREACH IN 2011



210 TOTAL SERVED

2011 RESULTS OF PROGRAM



210 TOTAL CLIENTS OF WHICH 131 EXITED THE PROGRAM

2011 OUTREACH SERVICES

- CLIENT CONTACTS: 799
- CLIENTS SERVED: 210
- TYPES OF SERVICES:
 - SUBSTANCE ABUSE / MENTAL HEALTH SERVICES: 76
 - TRANSPORTATION / BUS FARE: 23
 - HOUSING COUNSELING: 149
 - CASE MANAGEMENT: 75
 - INFORMATION & REFERRAL: 175
- OTHER SERVICES:
 - FINANCIAL ASSISTANCE: 47 (SECURITY DEPOSIT, IDENTIFICATIONS, CLOTHES, SHOES, ETC.)
 - SSI ASSISTANCE: 28
 - GENERAL OUTREACH: 222

TYPICAL SUPPORTIVE HOUSING

HOMELSS
POPULATION

LOW COST HOUSING
SUPPORT SERVICES
(EMENT, CHILD CARE,
BUDGETING, COUNSELING
& \$)

ASSESSMENT:
FINANCIAL
ABUSE
AODA
MENTAL ILLNESS

TREATMENT
&
COUNSELING
(60-90 DAYS)

LOW COST
HOUSING:
SOBER LIVING
&
MENTAL HEALTH
COMMUNITY
EMPLOYMENT
& LIFE SKILLS

HOUSING FIRST

