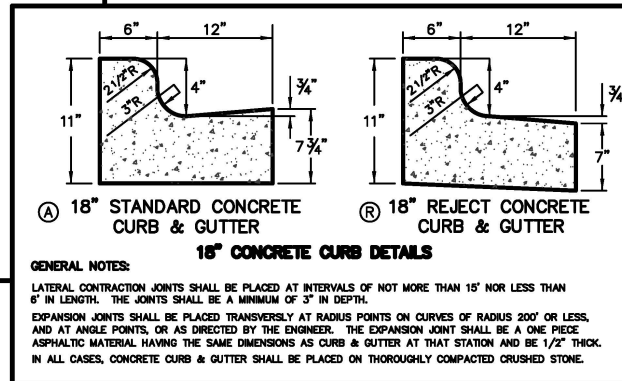
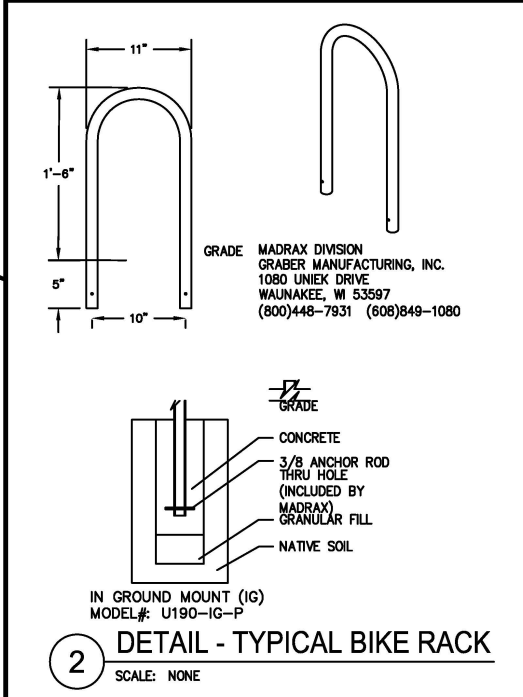
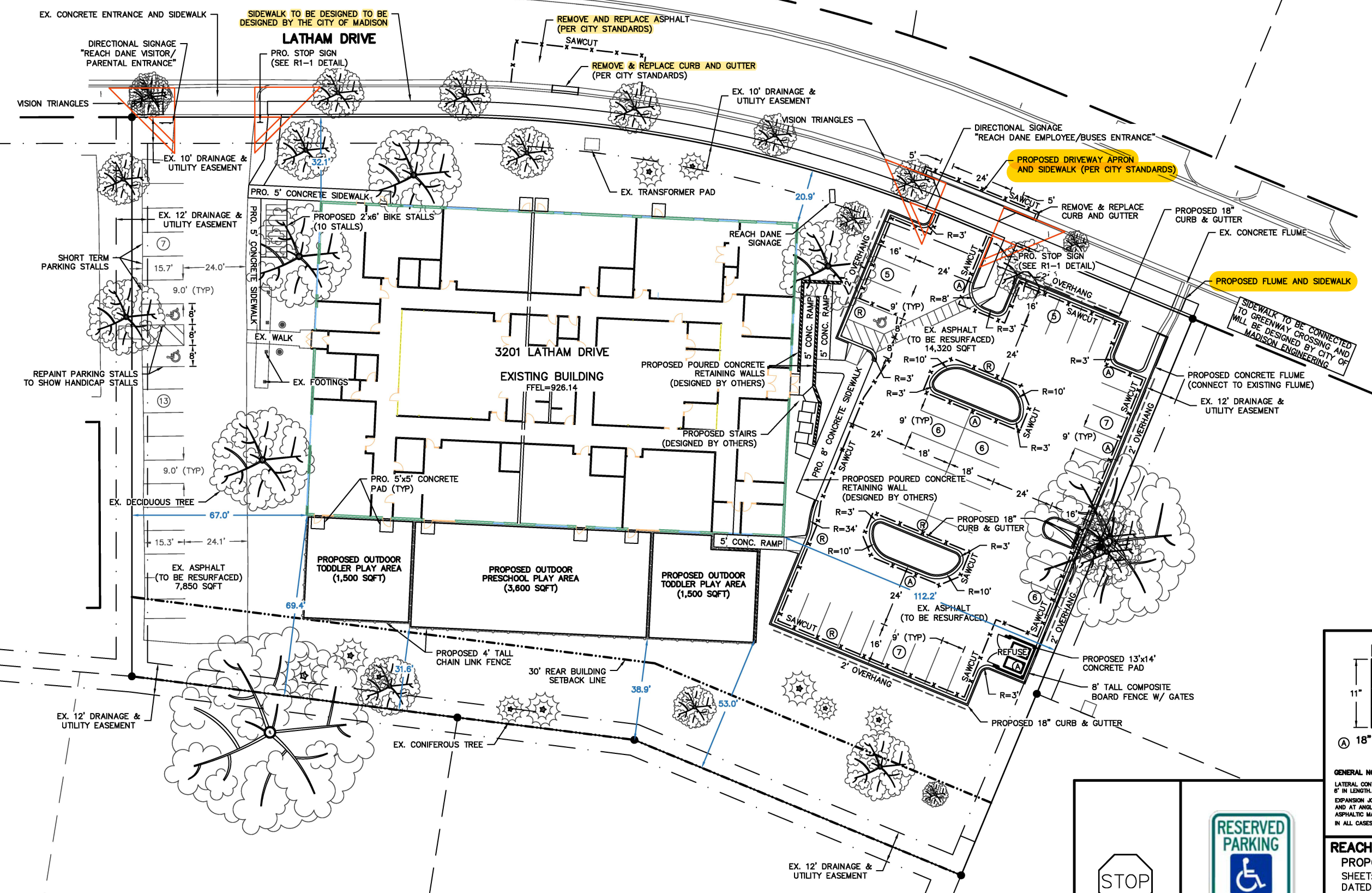




PARKING LOT PLAN SITE INFORMATION BLOCK	
Site Address	3201 LATHAM DRIVE
Site acreage (total)	1.842 Acres
Number of building stories (above grade)	EXISTING 2
Building height	EXISTING
DSPS type of construction (new structures or additions)	N/A
Total square footage of building	21,905 SF
Total square footage of garage	0
Use of property	CHILD CARE
Gross square feet of office	47,894 SF or 1.095 AC
IMPERVIOUS AREA	36,895 SF or 0.847 AC
OPEN SPACE AREA	
Number of bicycle stalls shown	10
Number of Parking stalls:	
	SHOWN
Customer Parking	57
Employee Parking	0
Service Parking	0
Inventory Parking	0
Accessible	3
Total	60
Number of trees shown (See Landscape Plan)	



R1 - 1
30" x 30"

STOP
SIGN DETAIL

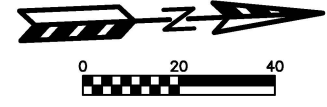
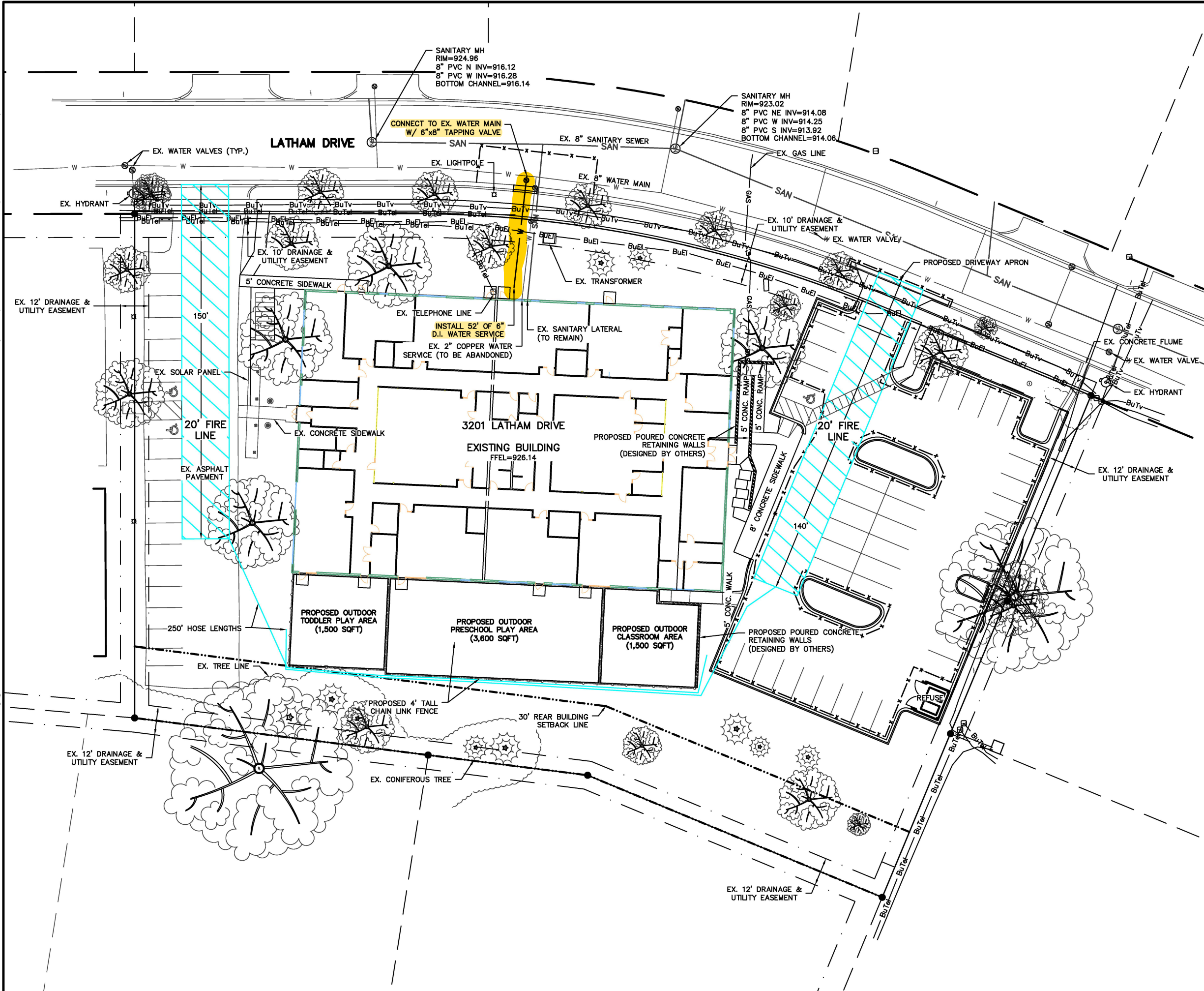
RESERVED
PARKING

HANDICAP
ACCESSIBLE
SIGN DETAIL

REACH DANE
 PROPOSED SITE PLAN
 SHEET: C-2
 DATED: JANUARY 17, 2020

QUAM ENGINEERING, LLC
 Residential and Commercial Site Design Consultants

www.quamengineering.com
 4604 Siggelkow Road, Suite A - McFarland, Wisconsin 53558
 Phone (608) 838-7750; Fax (608) 838-7752



UTILITY NOTES:

ALL WATER AND SEWER CONSTRUCTION SHALL BE IN COMPLIANCE WITH THE CITY OF MADISON AND WISCONSIN DSPS STANDARDS.

THE LENGTHS OF ALL UTILITIES ARE TO CENTER OF STRUCTURES OR FITTINGS AND MAY VARY SLIGHTLY FROM THE PLAN. LENGTHS SHALL BE VERIFIED IN THE FIELD DURING CONSTRUCTION.

ALL WATER MAIN SHALL BE BURIED TO A DEPTH OF 6.5 FEET. THE DEPTH IS DEFINED AS THE DISTANCE BETWEEN THE FINISHED GRADE ELEVATION AND THE TOP OF WATER MAIN OR SERVICE.

PROVIDE 18" MINIMUM VERTICAL SEPARATION WHERE SEWER CROSSES OVER WATER MAIN AND PROVIDE 12" MINIMUM VERTICAL SEPARATION WHERE WATER MAIN CROSSES OVER SEWER.

ANY UTILITIES WHICH ARE DAMAGED BY THE CONTRACTOR SHALL BE REPAIRED TO THE OWNER'S SATISFACTION AT THE CONTRACTOR'S EXPENSE.

ALL UNDERGROUND EXTERIOR WATER SERVICES/MAINS MUST BE PROVIDED WITH TRACER WIRE OR OTHER METHODS IN ORDER TO BE LOCATED IN ACCORDANCE WITH 182.0715(2r) OF STATE STATUTES.

CONTRACTOR SHALL CONTACT MADISON WATER UTILITY PRIOR TO INSTALLING WATER SERVICE AND PAY CITY INSPECTION FEE. BUILDING LATERALS SHALL BE CONSTRUCTED IN ACCORDANCE WITH LOCAL AND STATE PLUMBING CODES. SITE UTILITY CONTRACTOR SHALL STUB LATERAL TO 5 FEET OUTSIDE BUILDING. SEE INTERIOR PLUMBING PLANS FOR CONTINUATION OF PIPING INTO BUILDING BY BUILDING PLUMBING CONTRACTOR IN ACCORDANCE WITH STANDARD SPECIFICATIONS FOR SEWER AND WATER CONSTRUCTION WISCONSIN, LATEST EDITION.

WATER MAIN SHALL DUCTILE IRON CLASS 52, UNLESS INDICATED OTHERWISE.

TO OBTAIN LOCATION OF PARTICIPANTS' UNDERGROUND FACILITIES BEFORE YOU DIG IN WISCONSIN

CALL DIGGERS HOTLINE
1-800-242-8511
TOLL FREE

TDD(FOR THE HEARING IMPAIRED)(800)542-2289

WIS. STATUTE 182.0175 (1974)
 REQUIRES MIN. OF 3 WORK DAYS
 NOTICE BEFORE YOU EXCAVATE

REACH DANE
 UTILITY AND FIRE LANE PLAN
 SHEET: C-4
 DATED: JANUARY 17, 2020

QUAM ENGINEERING, LLC
 Residential and Commercial Site Design Consultants

www.quamengineering.com

4604 Siggelkow Road, Suite A - McFarland, Wisconsin 53558
 Phone (608) 838-7750; Fax (608) 838-7752