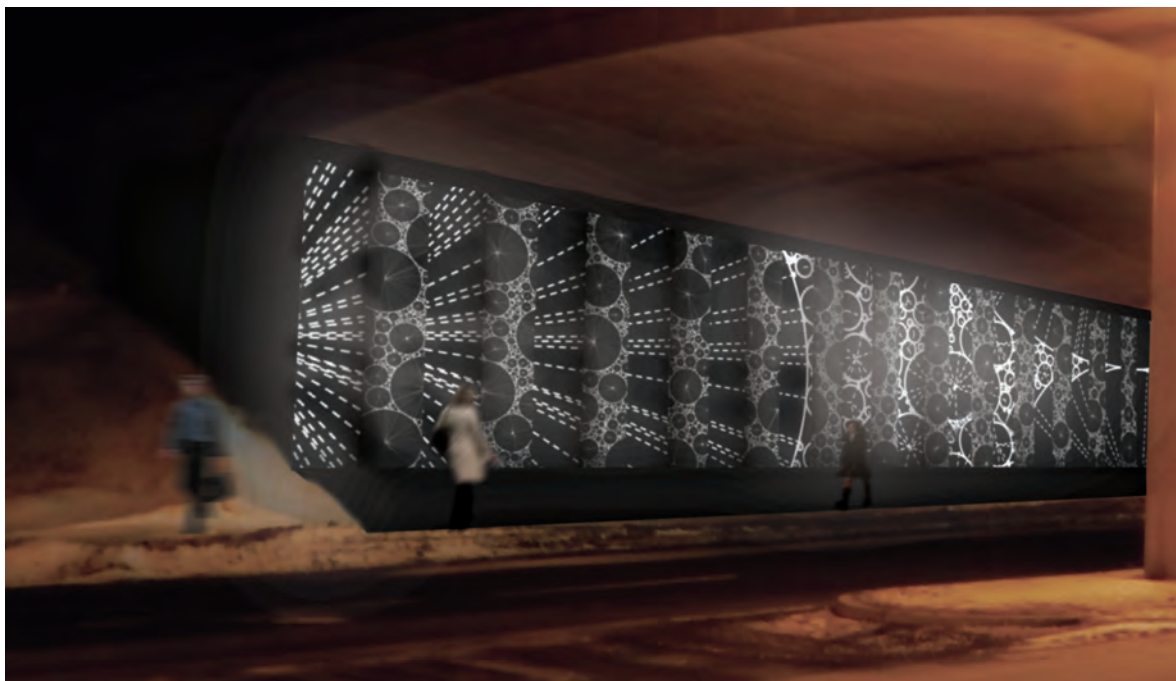




DAY RENDERING

Two contrasting circular network patterns



NIGHT RENDERING

Die-cut geometric imagery is back-lit to illuminate the walkway

A DYNAMIC EXPERIENCE

SPATIAL GEOMETRY — THE LENTICULAR WALL

The accordion-style form of this proposed lenticular wall emphasizes the movement of Highland Avenue. Each person's individual pace and curiosity determines a unique experience beneath the overpass creating a dynamic, people-activated space with every step, tire revolution or shifted position.

A SHIFTING LIGHT MURAL

Addressing aspects of aesthetics and safety, back-lit panels produce a glowing atmospheric effect reminiscent of a constellation. Photovoltaically powered LED light fixtures are mounted to the existing concrete wall to provide a sustainably sourced, welcoming night time experience.

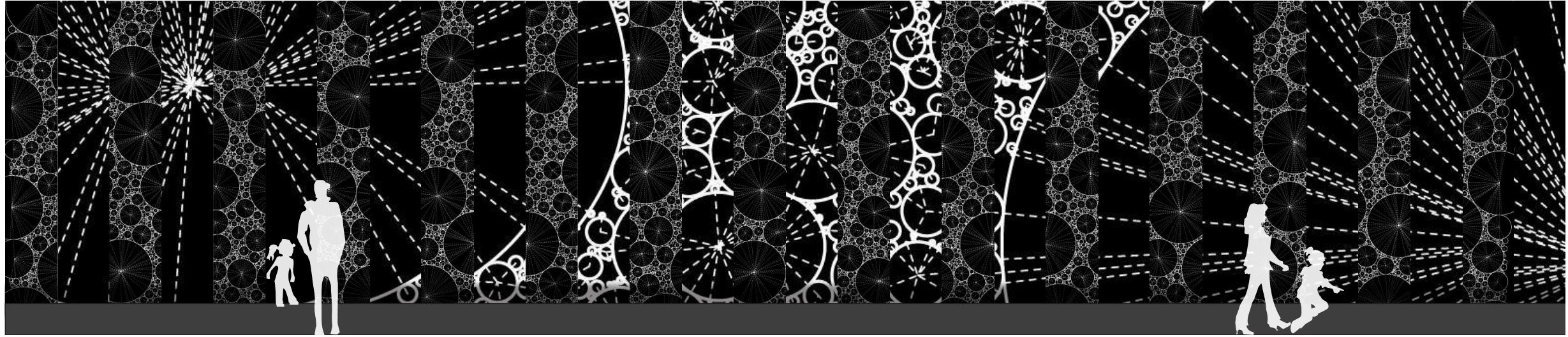
LIGHTING DETAIL



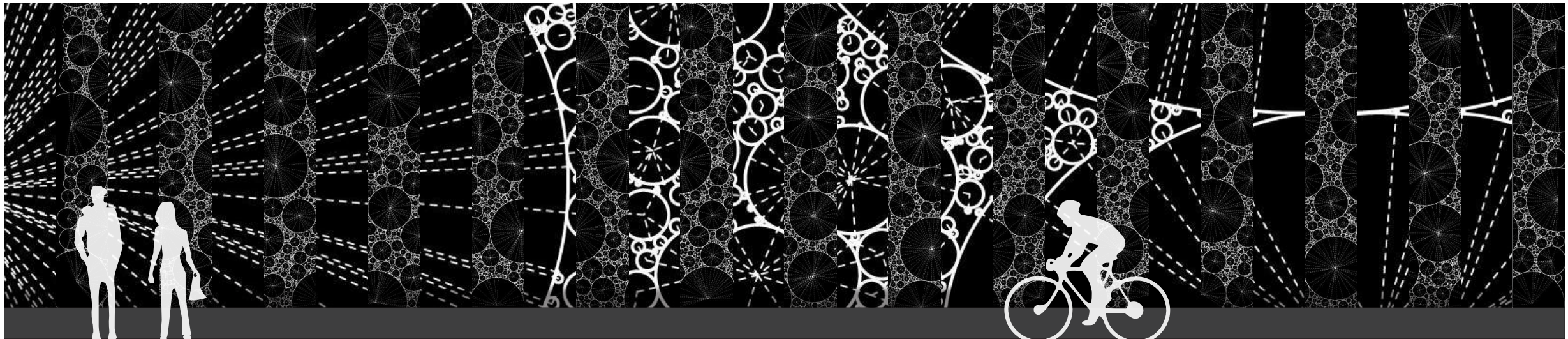
Mounted LED light

Translucent white inner panel

Die-cut outer panel



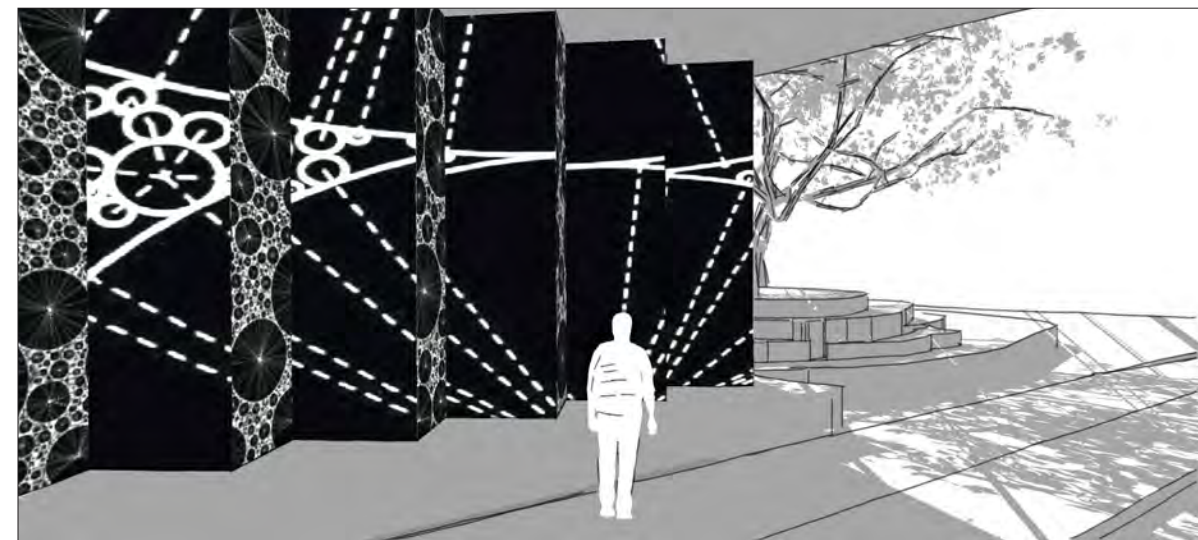
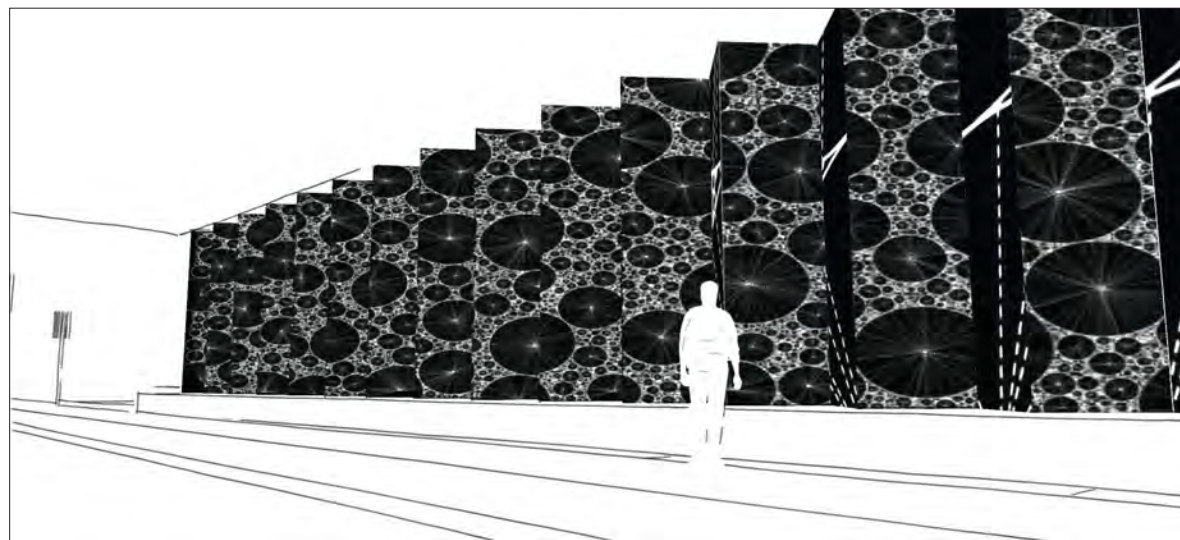
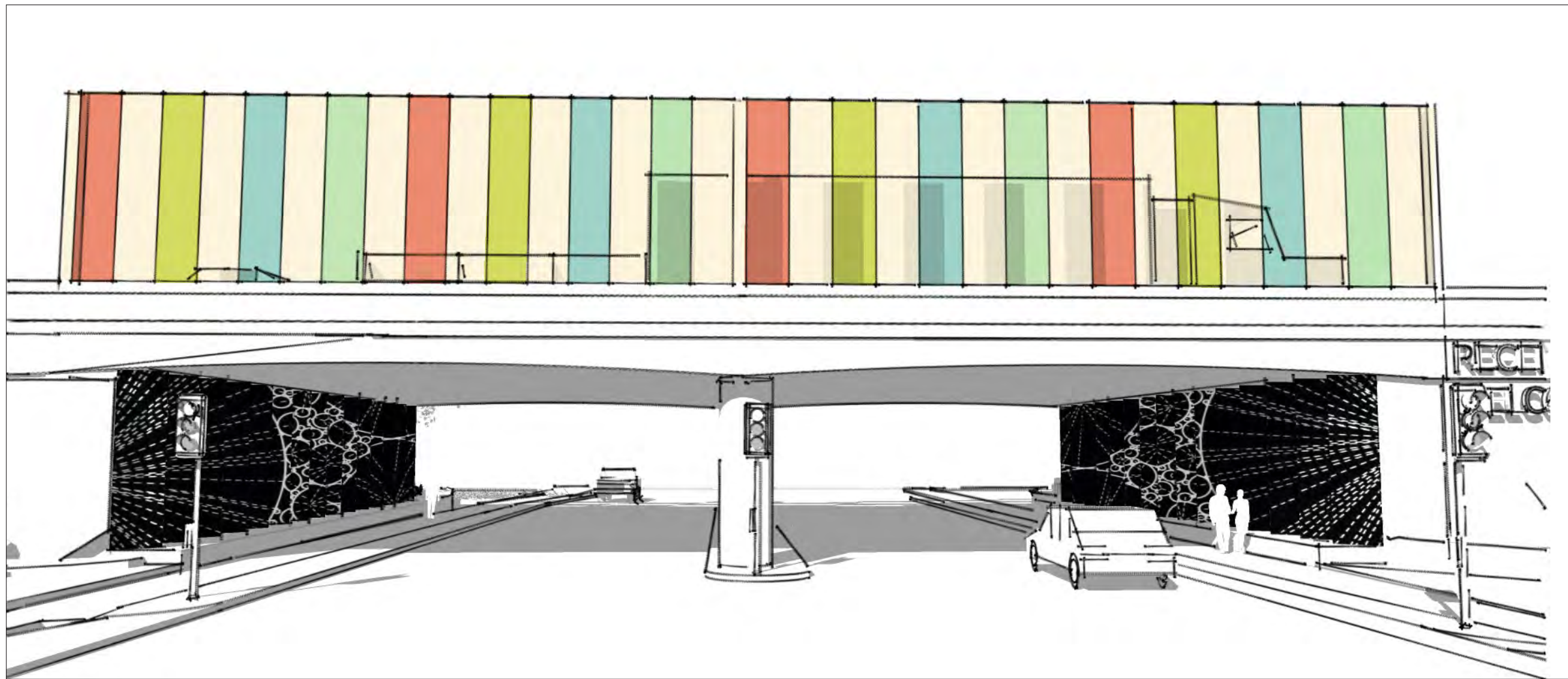
WEST ELEVATION OF LENTICULAR WALL



EAST ELEVATION OF LENTICULAR WALL



A GATEWAY ACTIVATED BY MOVEMENT



ABOVE: Perspective towards Regent Neighborhood

BELOW: Experiencing the wall walking through the underpass as approaching from either direction

SHIFTING PERSPECTIVES