

1

2

3

4

5

6

KEYNOTES PER SHEET

0341-05	EXPOSED CONCRETE
0443-02	BRICK UTILITY - BELDEN CONCORD BLEND
0443-04	MANUFACTURED STONE SMOOTH - ARRISCRAFT RENAISSANCE SANDRIFT
0443-07	BRICK MODULAR - BOWERSTON 85/15 W/C
0550-03	GUARDRAIL
0724-01	EXTERIOR INSULATION & FINISH SYSTEM - SHERWIN WILLIAMS FORCEFUL ORANGE
0742-08	METAL PANEL - COLOR 1 - ALPOLIC CRY CREAM
0742-09	METAL PANEL - COLOR 2 - ALPOLIC METAL COPPER
0742-10	METAL PANEL - COLOR 3 - ALPOLIC MICA CHAMPAGNE
0742-11	METAL PANEL - COLOR 4 - ALPOLIC TERRA COTTA
0742-15	CORRUGATED METAL PANEL - CENTRIA CONCEPT CONCEALED FASTENER MEDIUM BRONZE
0742-17	METAL PANEL - COLOR 6 - ALPOLIC SER BRONZE
0742-19	PAINTED BREAK METAL
0746-03	CEMENT BOARD SIDING - SHERWIN WILLIAMS BOSCP PEAR
0746-04	SHINGLED CEMENT BOARD SIDING - JAMES HARDIE TUSCAN GOLD
0762-01	ALUMINUM COPING
0843-01	ALUMINUM-FRAMED STOREFRONT - CLEAR ANODIZED AT LEVELS 01, 02 & 03 - IVORY AT LEVEL 04 AND ABOVE
0880-01	SPANDREL GLASS
0880-02	VINYL WINDOW
0880-03	GLASS RAILING



epstein uhen : architects

Milwaukee 333 East Chicago Street
Milwaukee, Wisconsin 53202
Telephone 414.271.5350

Madison 309 West Johnson Street, Suite 202
Madison, Wisconsin 53703
Telephone 608.442.5350

PROJECT INFORMATION

STONE HOUSE
MIXED USE EAST
WASHINGTON

1000 E.
WASHINGTON
MADISON, WI 53703

ISSUANCE AND REVISIONS

LAND USE APPLICATION
UDC REVIEW

#	DATE	DESCRIPTION
---	------	-------------

SHEET INFORMATION

**PROGRESS DOCUMENTS
NOT FOR CONSTRUCTION**

These documents reflect progress and intent and may be subject to change, including additional detail. These are not final construction documents and should not be used for final bidding or construction-related purposes.

PROJECT MANAGER JP

PROJECT NUMBER 14339-01

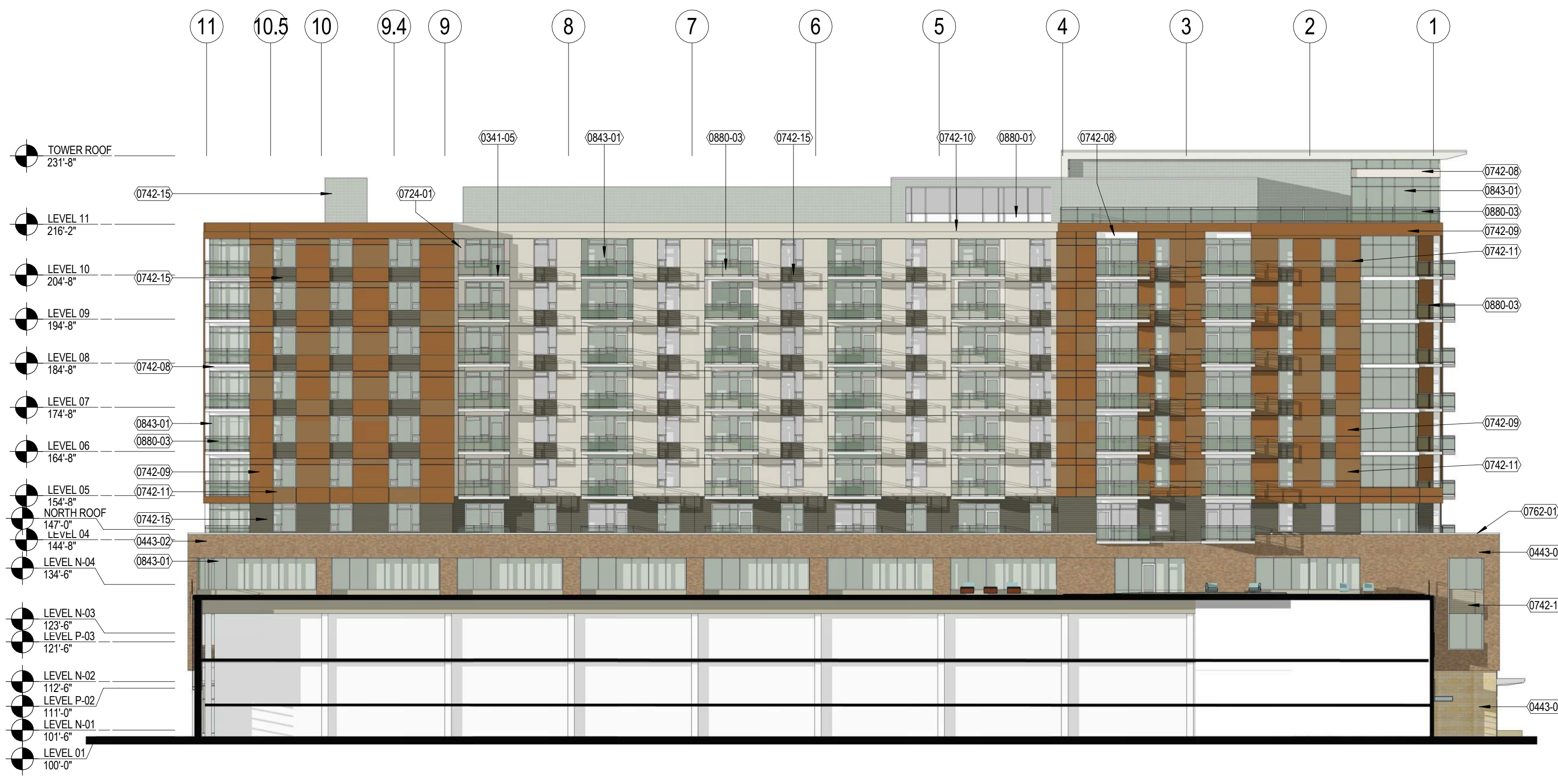
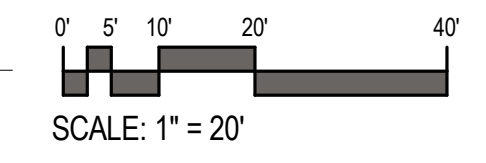
DATE 12/28/2015

BUILDING ELEVATIONS

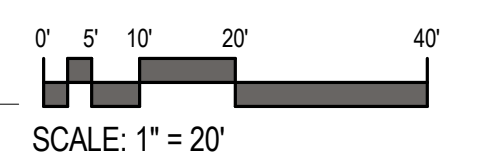
A14



1 NORTH ELEVATION-AFFORDABLE
1" = 20'-0"



2 NORTH ELEVATION
1" = 20'-0"



D

C

B

A

D

C

B

A

1

2

3

4

5

6

KEYNOTES PER SHEET	
0341-05	EXPOSED CONCRETE
0443-07	BRICK MODULAR - BOWERSTON 85/15 W/C
0550-03	GUARDRAIL
0742-08	METAL PANEL - COLOR 1 - ALPOLIC CRY CREAM
0742-17	METAL PANEL - COLOR 6 - ALPOLIC SER BRONZE
0742-19	PAINTED BREAK METAL
0746-03	CEMENT BOARD SIDING - SHERWIN WILLIAMS BOSQ PEAR
0746-04	SHINGLED CEMENT BOARD SIDING - JAMES HARDIE TUSCAN GOLD
0762-01	ALUMINUM COPING
0843-01	ALUMINUM-FRAMED STOREFRONT - CLEAR ANODIZED AT LEVELS 01, 02 & 03 - IVORY AT LEVEL 04 AND ABOVE
0880-02	VINYL WINDOW



eppstein uhen : architects

milwaukee 333 East Chicago Street
Milwaukee, Wisconsin 53202
telephone 414.271.5350

madison 309 West Johnson Street, Suite 202
Madison, Wisconsin 53703
telephone 608.442.5350

PROJECT INFORMATION

STONE HOUSE
MIXED USE EAST
WASHINGTON

1000 E.
WASHINGTON
MADISON, WI 53703

ISSUANCE AND REVISIONS

LAND USE APPLICATION
UDC REVIEW

#	DATE	DESCRIPTION

SHEET INFORMATION

**PROGRESS DOCUMENTS
NOT FOR CONSTRUCTION**

These documents reflect progress and intent and may be subject to change, including additional detail. These are not final construction documents and should not be used for final bidding or construction-related purposes.

PROJECT MANAGER JP

PROJECT NUMBER 14339-01

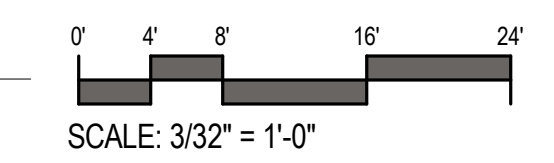
DATE 12/28/2015

ENLARGED
BUILDING
ELEVATION

A14.1



1 NORTH ELEVATION - ENLARGED
3/32" = 1'-0"





epstein uhen : architects

milwaukee 333 East Chicago Street
Milwaukee, Wisconsin 53202
telephone 414.271.5350
madison 309 West Johnson Street, Suite 202
Madison, Wisconsin 53703
telephone 608.442.5350

PROJECT INFORMATION

STONE HOUSE
MIXED USE EAST
WASHINGTON

1000 E.
WASHINGTON
MADISON, WI 53703

ISSUANCE AND REVISIONS

LAND USE APPLICATION
UDC REVIEW

#	DATE	DESCRIPTION

SHEET INFORMATION

**PROGRESS DOCUMENTS
NOT FOR CONSTRUCTION**

These documents reflect progress and intent and may be subject to change, including additional detail. These are not final construction documents and should not be used for final bidding or construction-related purposes.

PROJECT MANAGER JP

PROJECT NUMBER 14339-01

DATE 12/28/2015

BUILDING
ELEVATIONS

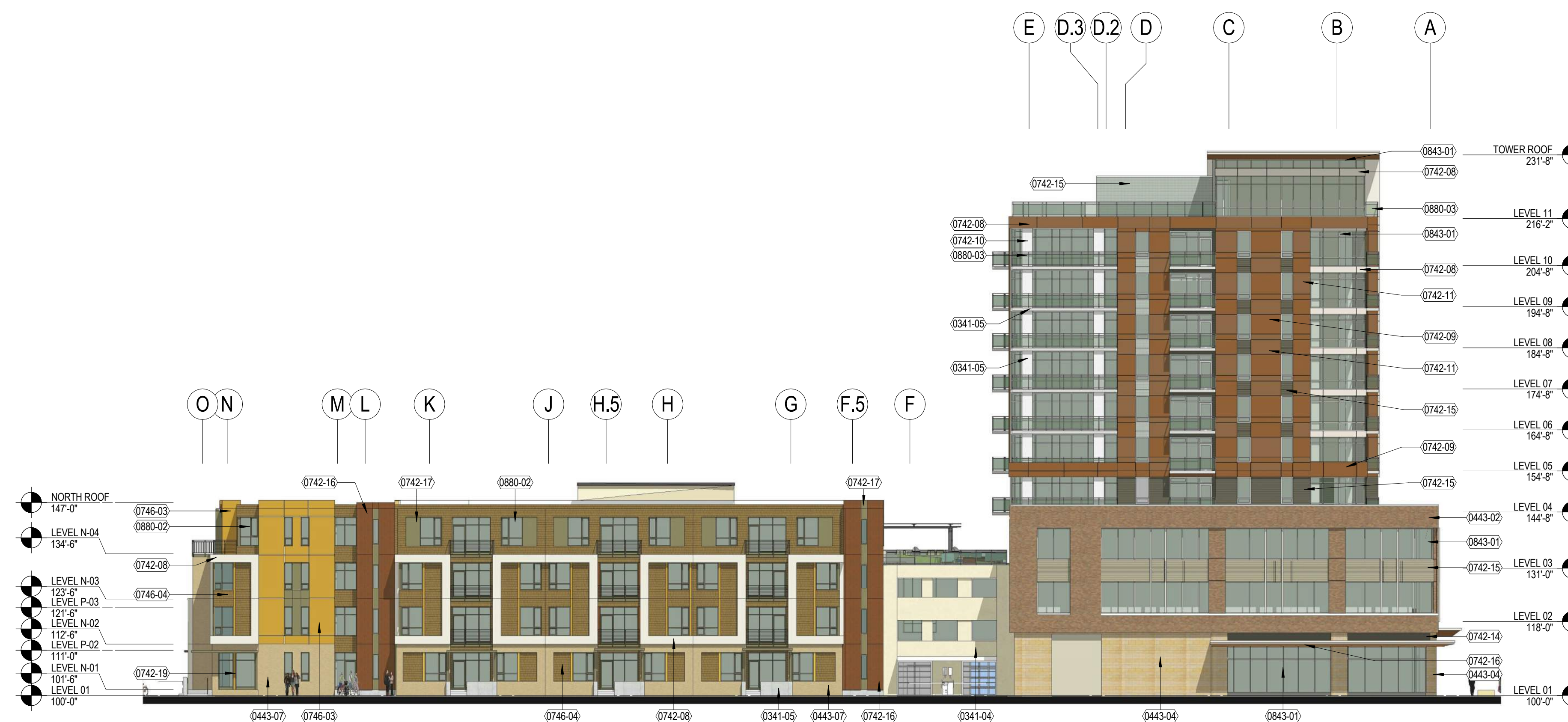
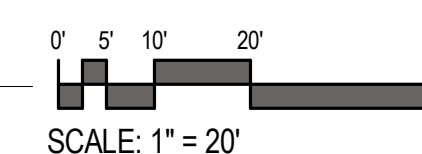
A15

KEYNOTES PER SHEET

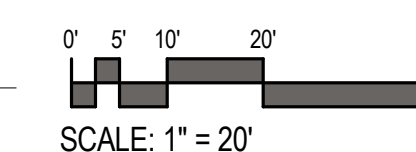
0341-04	PRECAST CONCRETE WALL PANEL - BUFF
0341-05	EXPOSED CONCRETE
0443-02	BRICK UTILITY - BELDEN CONCORD BLEND
0443-04	MANUFACTURED STONE SMOOTH - ARRISCRAFT RENAISSANCE SANDRIFT
0443-05	MANUFACTURED STONE ROUGH CUT - ARRISCRAFT RENAISSANCE SANDRIFT
0443-06	NATURAL STONE BASE
0443-07	BRICK MODULAR - BOWERSTON 85/15 W/C
0724-01	EXTERIOR INSULATION & FINISH SYSTEM - SHERWIN WILLIAMS FORCEFUL ORANGE
0742-08	METAL PANEL - COLOR 1 - ALPOLIC CRY CREAM
0742-09	METAL PANEL - COLOR 2 - ALPOLIC METAL COPPER
0742-10	METAL PANEL - COLOR 3 - ALPOLIC MICA CHAMPAGNE
0742-11	METAL PANEL - COLOR 4 - ALPOLIC TERRA COTTA
0742-14	ARCHITECTURAL LOUVER - COLOR TO MATCH CENTRIA CONCEPT MEDIUM BRONZE
0742-15	CORRUGATED METAL PANEL - CENTRIA CONCEPT CONCEALED FASTENER MEDIUM BRONZE
0742-16	METAL PANEL - COLOR 5 - APOLIC WALNUT TIMBER
0742-17	METAL PANEL - COLOR 6 - ALPOLIC SER BRONZE
0742-19	PAINTED BREAK METAL
0746-03	CEMENT BOARD SIDING - SHERWIN WILLIAMS BOSCP PEAR
0746-04	SHINGLED CEMENT BOARD SIDING - JAMES HARDIE TUSCAN GOLD
0762-01	ALUMINUM COPING
0843-01	ALUMINUM-FRAMED STOREFRONT - CLEAR ANODIZED AT LEVELS 01, 02 & 03 - IVORY AT LEVEL 04 AND ABOVE
0844-01	ALUMINUM-FRAMED CURTAIN WALL
0880-01	SPANDREL GLASS
0880-02	VINYL WINDOW
0880-03	GLASS RAILING



1 SOUTH ELEVATION
1" = 20'-0"



2 WEST ELEVATION
1" = 20'-0"



KEYNOTES PER SHEET

0341-05	EXPOSED CONCRETE
0443-02	BRICK UTILITY - BELDEN CONCORD BLEND
0443-04	MANUFACTURED STONE SMOOTH - ARRISCRAFT RENAISSANCE SANDRIFT
0443-05	MANUFACTURED STONE ROUGH CUT - ARRISCRAFT RENAISSANCE SANDRIFT
0443-06	NATURAL STONE BASE
0724-01	EXTERIOR INSULATION & FINISH SYSTEM - SHERWIN WILLIAMS FORCEFUL ORANGE
0742-08	METAL PANEL - COLOR 1 - ALPOLIC CRY CREAM
0742-09	METAL PANEL - COLOR 2 - ALPOLIC METAL COPPER
0742-10	METAL PANEL - COLOR 3 - ALPOLIC MICA CHAMPAGNE
0742-11	METAL PANEL - COLOR 4 - ALPOLIC TERRA COTTA
0742-14	ARCHITECTURAL LOUVER - COLOR TO MATCH CENTRIA CONCEPT MEDIUM BRONZE
0742-15	CORRUGATED METAL PANEL - CENTRIA CONCEPT CONCEALED FASTENER MEDIUM BRONZE
0742-16	METAL PANEL - COLOR 5 - APOLIC WALNUT TIMBER
0762-01	ALUMINUM COPING
0843-01	ALUMINUM-FRAMED STOREFRONT - CLEAR ANODIZED AT LEVELS 01, 02 & 03 - IVORY AT LEVEL 04 AND ABOVE
0844-01	ALUMINUM-FRAMED CURTAIN WALL
0880-01	SPANDREL GLASS
0880-03	GLASS RAILING



eppstein uhen : architects

milwaukee 333 East Chicago Street
Milwaukee, Wisconsin 53202
telephone 414.271.5350

madison 309 West Johnson Street, Suite 202
Madison, Wisconsin 53703
telephone 608.442.5350

PROJECT INFORMATION

**STONE HOUSE
MIXED USE EAST
WASHINGTON**

1000 E.
WASHINGTON
MADISON, WI 53703

ISSUANCE AND REVISIONS

LAND USE APPLICATION
UDC REVIEW

#	DATE	DESCRIPTION
---	------	-------------

SHEET INFORMATION

**PROGRESS DOCUMENTS
NOT FOR CONSTRUCTION**

These documents reflect progress and intent and may be subject to change, including additional detail. These are not final construction documents and should not be used for final bidding or construction-related purposes.

PROJECT MANAGER JP
PROJECT NUMBER 14339-01
DATE 12/28/2015

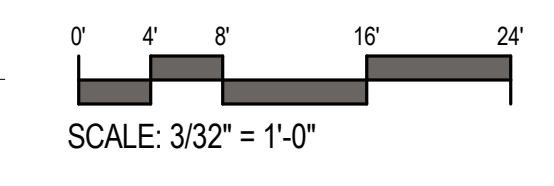
**ENLARGED
BUILDING
ELEVATION**

A15.1

© Eppstein Uhen Architects, Inc.



1 SOUTH ELEVATION - ENLARGED
3/32" = 1'-0"





eppstein uhen : architects

Milwaukee 333 East Chicago Street
Milwaukee, Wisconsin 53202
Telephone 414.271.5350
Madison 309 West Johnson Street, Suite 202
Madison, Wisconsin 53703
Telephone 608.442.5350

KEYNOTES PER SHEET

0341-04	PRECAST CONCRETE WALL PANEL - BUFF
0341-05	EXPOSED CONCRETE
0443-02	BRICK UTILITY - BELDEN CONCORD BLEND
0443-04	MANUFACTURED STONE SMOOTH - ARRIS CRAFT RENAISSANCE SANDRIFT
0443-07	BRICK MODULAR - BOWERSTON 89/15 W/C
0742-08	METAL PANEL - COLOR 1 - ALPOLIC CRY CREAM
0742-09	METAL PANEL - COLOR 2 - ALPOLIC METAL COPPER
0742-11	METAL PANEL - COLOR 4 - ALPOLIC TERRA COTTA
0742-15	CORRUGATED METAL PANEL - CENTRIA CONCEPT CONCEALED FASTENER MEDIUM BRONZE
0742-16	METAL PANEL - COLOR 5 - APOLIC WALNUT TIMBER
0742-17	METAL PANEL - COLOR 6 - ALPOLIC SER BRONZE
0742-19	PAINTED BREAK METAL
0746-03	CEMENT BOARD SIDING - SHERWIN WILLIAMS BOSQ PEAR
0746-04	SHINGLED CEMENT BOARD SIDING - JAMES HARDIE TUSCAN GOLD
0843-01	ALUMINUM-FRAMED STOREFRONT - CLEAR ANODIZED AT LEVELS 01, 02 & 03 - IVORY AT LEVEL 04 AND ABOVE
0880-02	VINYL WINDOW
0880-03	GLASS RAILING

PROJECT INFORMATION

STONE HOUSE
MIXED USE EAST
WASHINGTON

1000 E.
WASHINGTON
MADISON, WI 53703

ISSUANCE AND REVISIONS

LAND USE APPLICATION
UDC REVIEW

#	DATE	DESCRIPTION

SHEET INFORMATION

**PROGRESS DOCUMENTS
NOT FOR CONSTRUCTION**

These documents reflect progress and intent and may be subject to change, including additional detail. These are not final construction documents and should not be used for final bidding or construction-related purposes.

PROJECT MANAGER JP

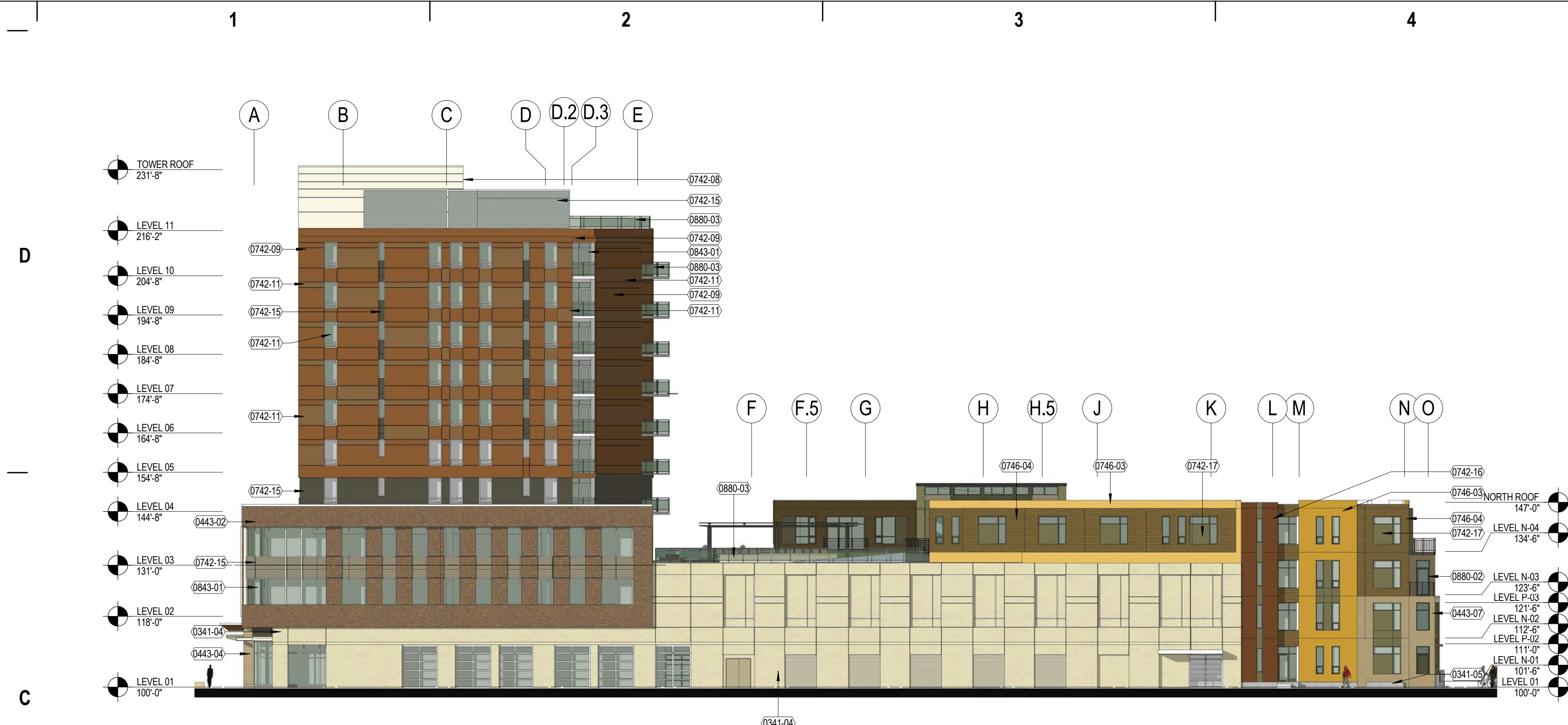
PROJECT NUMBER 14339-01

DATE 12/28/2015

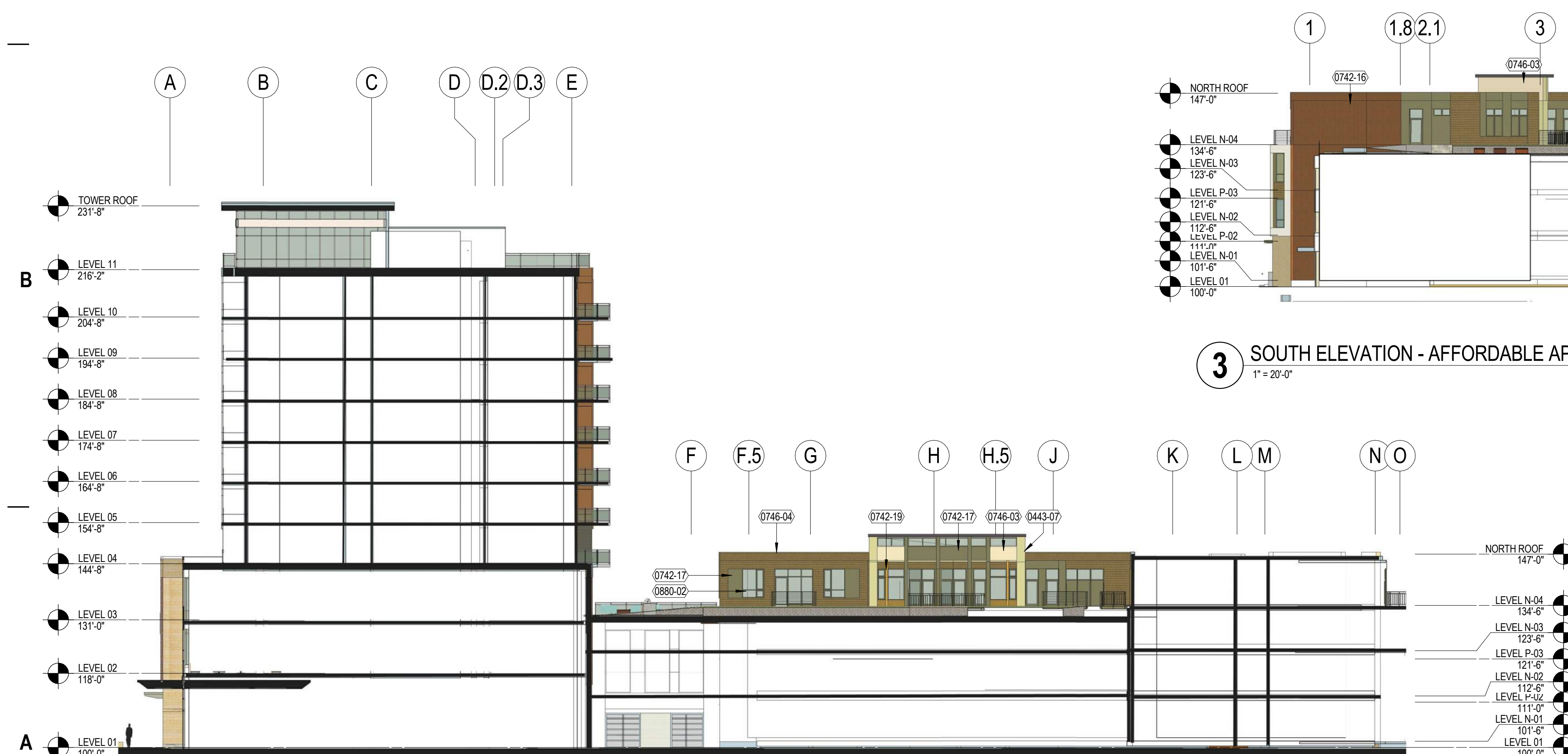
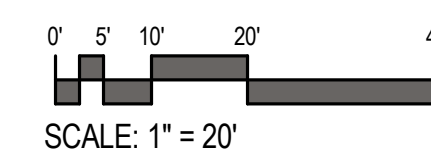
BUILDING
ELEVATIONS

A16

© Eppstein Uhen Architects, Inc.

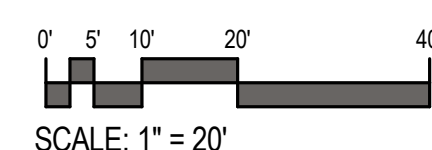
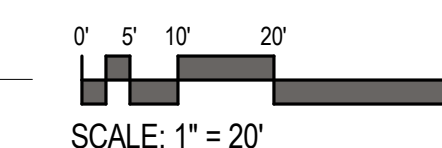
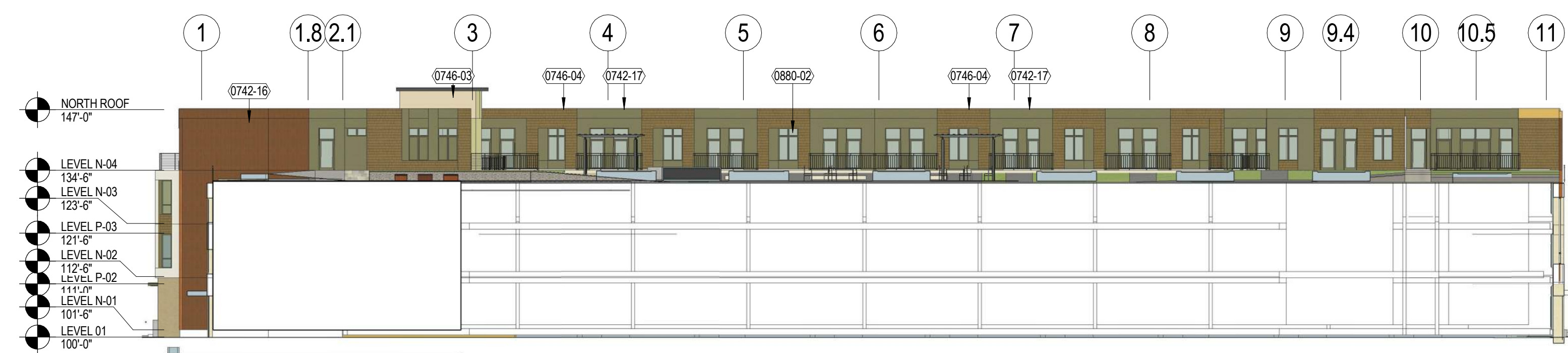


1 EAST ELEVATION
1" = 20'-0"



2 EAST ELEVATION - AFFORDABLE
1" = 20'-0"

3 SOUTH ELEVATION - AFFORDABLE APARTMENTS
1" = 20'-0"



KEYNOTES PER SHEET

0341-04	PRECAST CONCRETE WALL PANEL - BUFF
0341-05	EXPOSED CONCRETE
0443-02	BRICK UTILITY - BELDEN CONCORD BLEND
0443-04	MANUFACTURED STONE SMOOTH - ARRISCRRAFT RENAISSANCE SANDRIFT
0443-07	BRICK MODULAR - BOWERSTON 85/15 W/C
0742-08	METAL PANEL - COLOR 1 - ALPOLIC CRY CREAM
0742-09	METAL PANEL - COLOR 2 - ALPOLIC METAL COPPER
0742-10	METAL PANEL - COLOR 3 - ALPOLIC MICA CHAMPAGNE
0742-11	METAL PANEL - COLOR 4 - ALPOLIC TERRA COTTA
0742-14	ARCHITECTURAL LOUVER - COLOR TO MATCH CENTRIA CONCEPT MEDIUM BRONZE
0742-15	CORRUGATED METAL PANEL - CENTRIA CONCEPT CONCEALED FASTENER MEDIUM BRONZE
0742-16	METAL PANEL - COLOR 5 - APOLIC WALNUT TIMBER
0742-17	METAL PANEL - COLOR 6 - ALPOLIC SER BRONZE
0742-19	PAINTED BREAK METAL
0746-03	CEMENT BOARD SIDING - SHERWIN WILLIAMS BOSQ PEAR
0746-04	SHINGLED CEMENT BOARD SIDING - JAMES HARDIE TUSCAN GOLD
0843-01	ALUMINUM-FRAMED STOREFRONT - CLEAR ANODIZED AT LEVELS 01, 02 & 03 - IVORY AT LEVEL 04 AND ABOVE
0880-02	VINYL WINDOW
0880-03	GLASS RAILING



eppstein uhen : architects

milwaukee 333 East Chicago Street
Milwaukee, Wisconsin 53202
telephone 414.271.5350

madison 309 West Johnson Street, Suite 202
Madison, Wisconsin 53703
telephone 608.442.5350

PROJECT INFORMATION

STONE HOUSE
MIXED USE EAST
WASHINGTON

1000 E.
WASHINGTON
MADISON, WI 53703

ISSUANCE AND REVISIONS

LAND USE APPLICATION
UDC REVIEW

#	DATE	DESCRIPTION
---	------	-------------

SHEET INFORMATION

**PROGRESS DOCUMENTS
NOT FOR CONSTRUCTION**

These documents reflect progress and intent and may be subject to change, including additional detail. These are not final construction documents and should not be used for final bidding or construction-related purposes.

PROJECT MANAGER JP

PROJECT NUMBER 14339-01

DATE 12/28/2015

ENLARGED
BUILDING
ELEVATION

A16.1

© Eppstein Uhen Architects, Inc.



1 WEST ELEVATION - ENLARGED
3/32" = 1'-0"

