

Aerial Locator Map  
432- 436 State St.  
January 24, 2022





W. Gilman St.

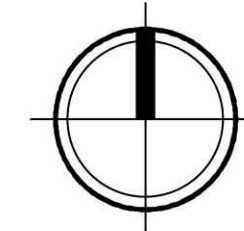
State Street

BUILDING I  
23-26 UNITS  
MIXED USE  
5 STORIES

FIFTH FLOOR  
ROOF DECK

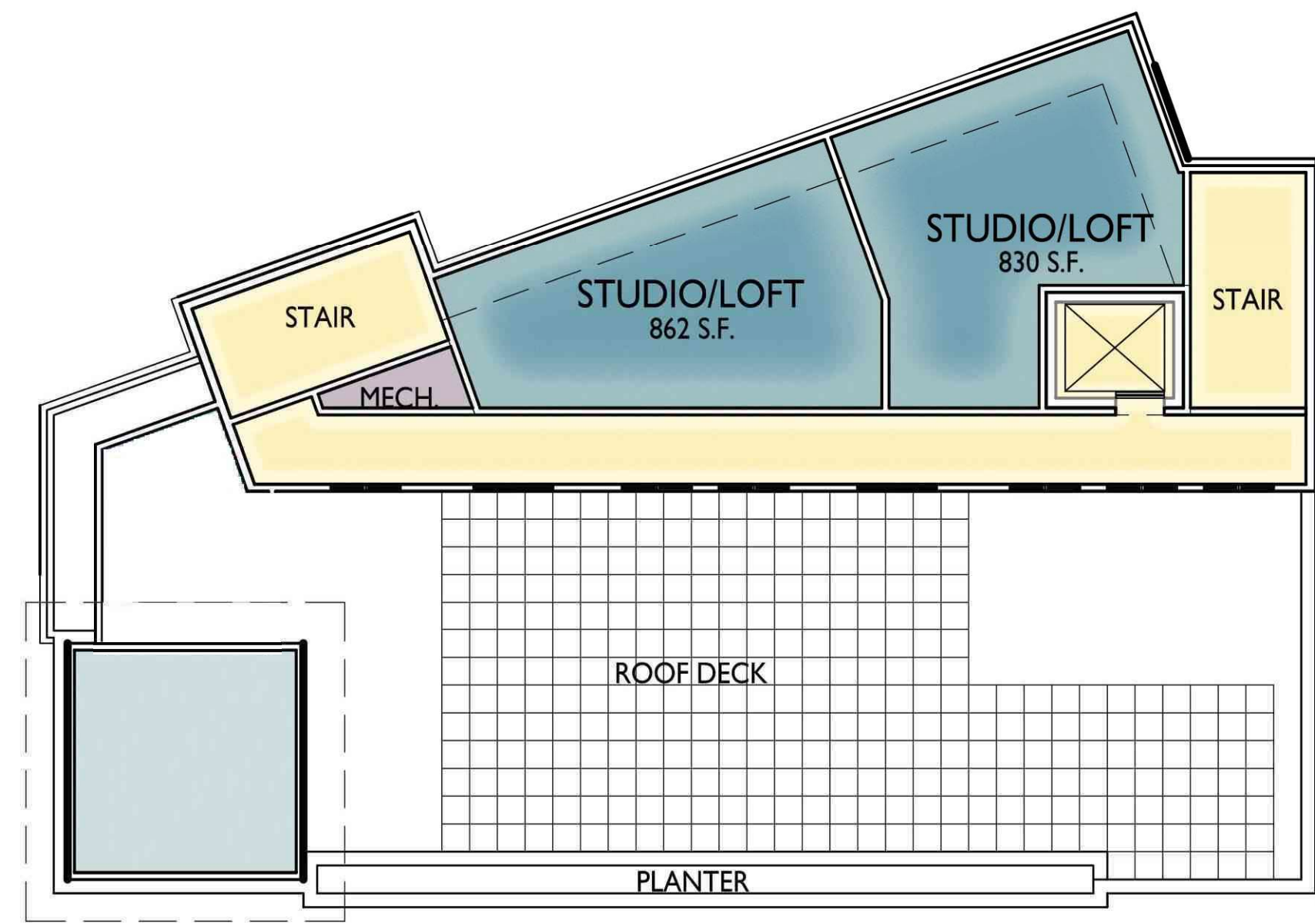
PLANTER

LOT 1

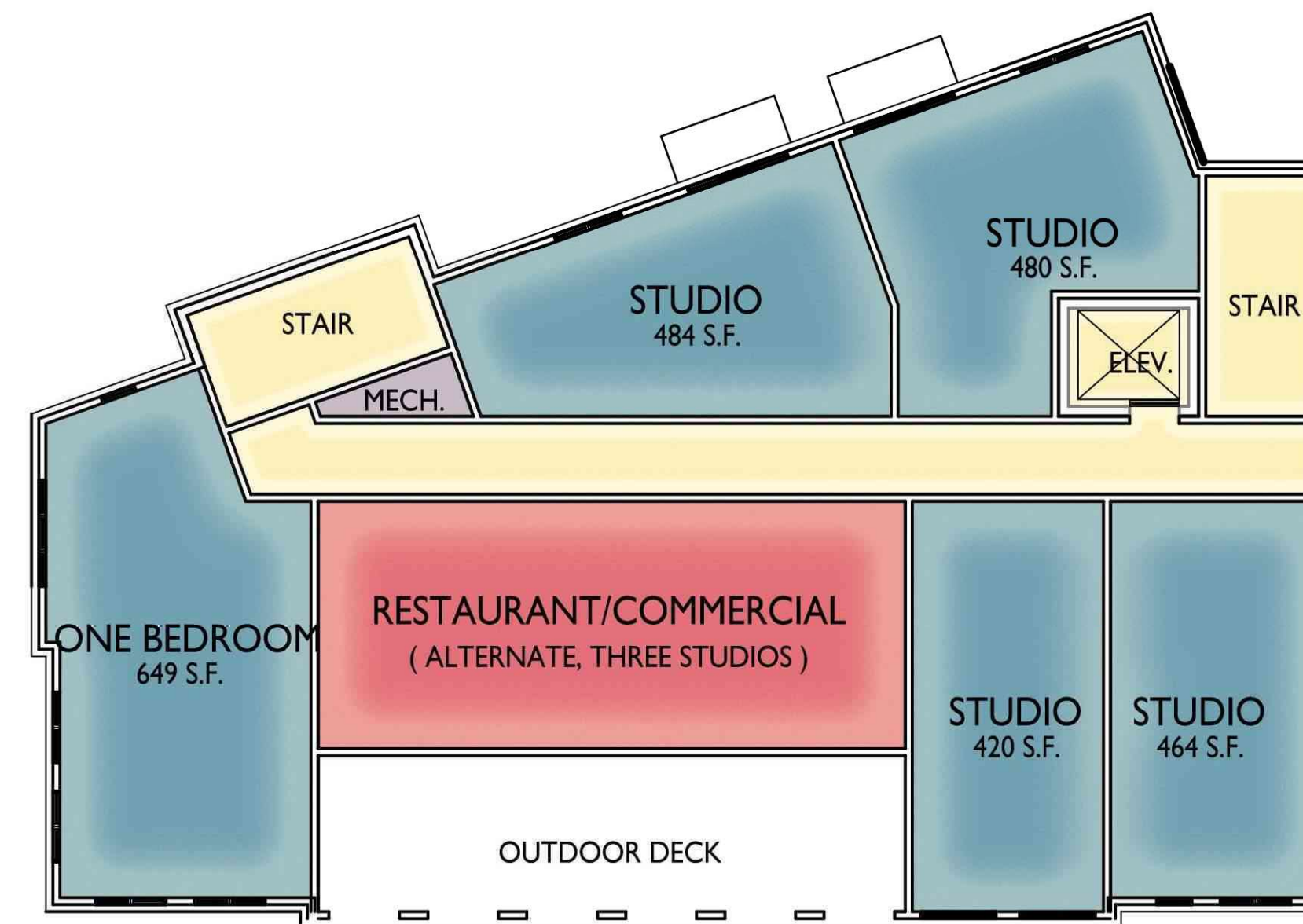


Concept Site Plan  
432- 436 State St.  
January 24, 2022

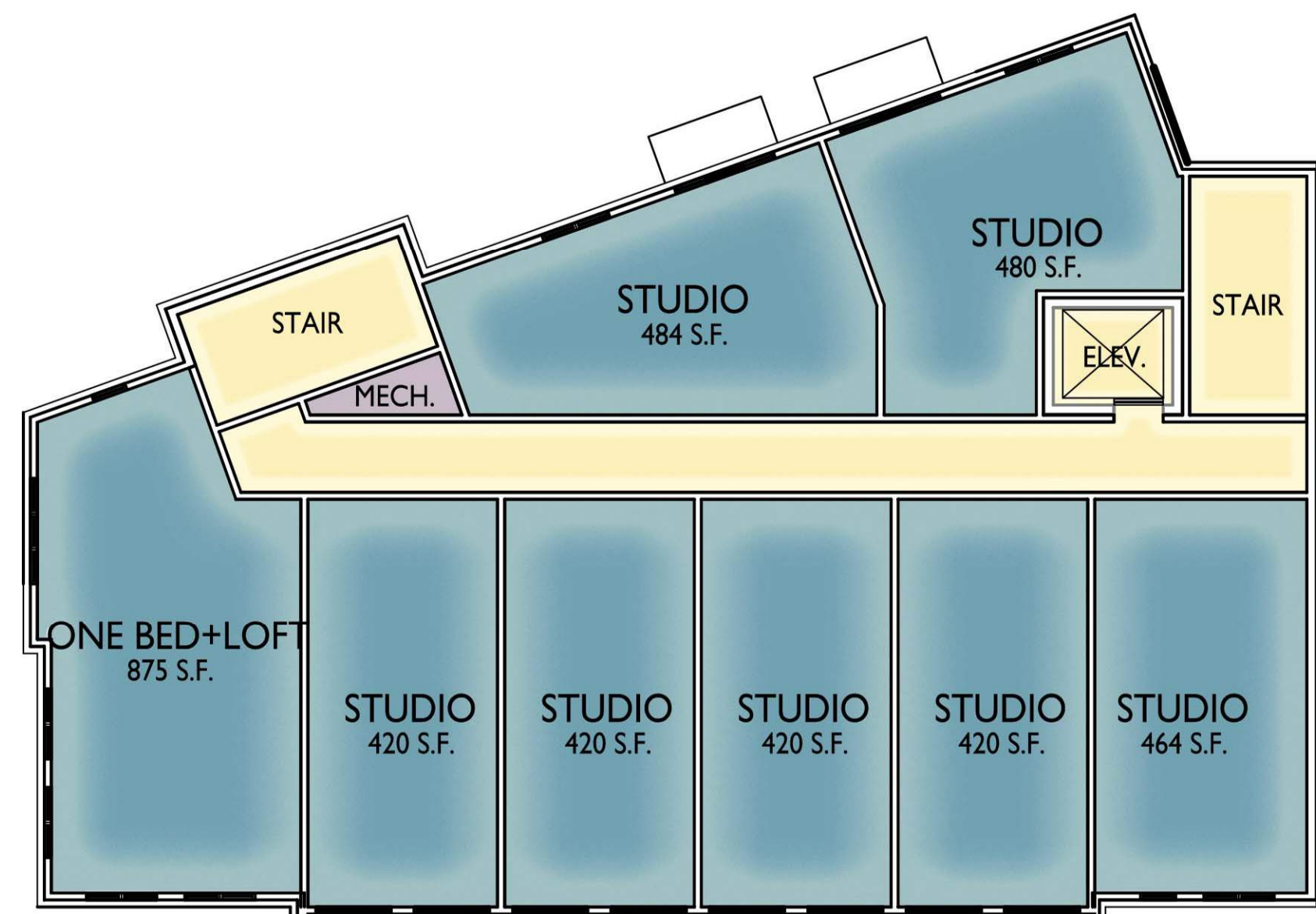




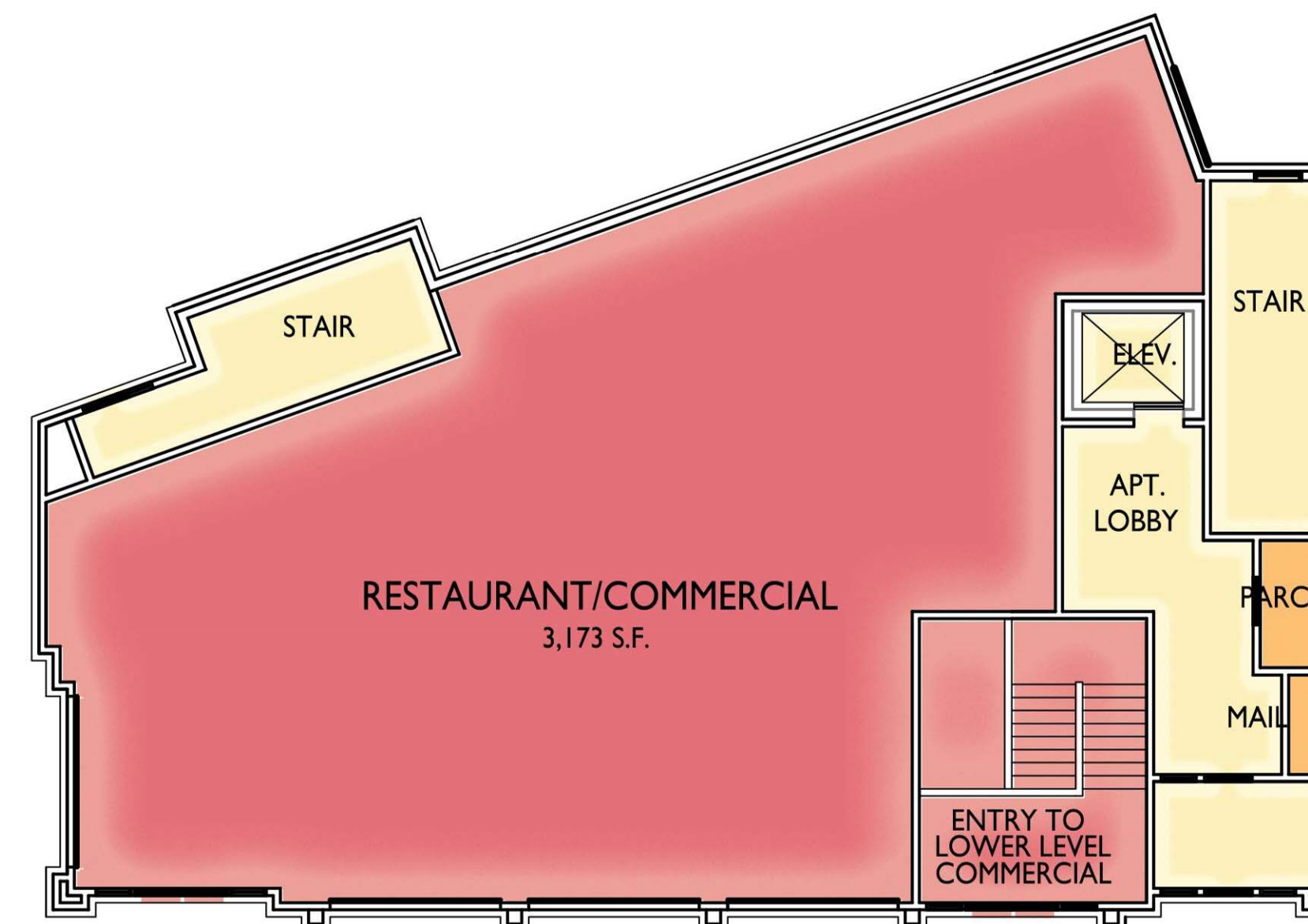
FIFTH FLOOR



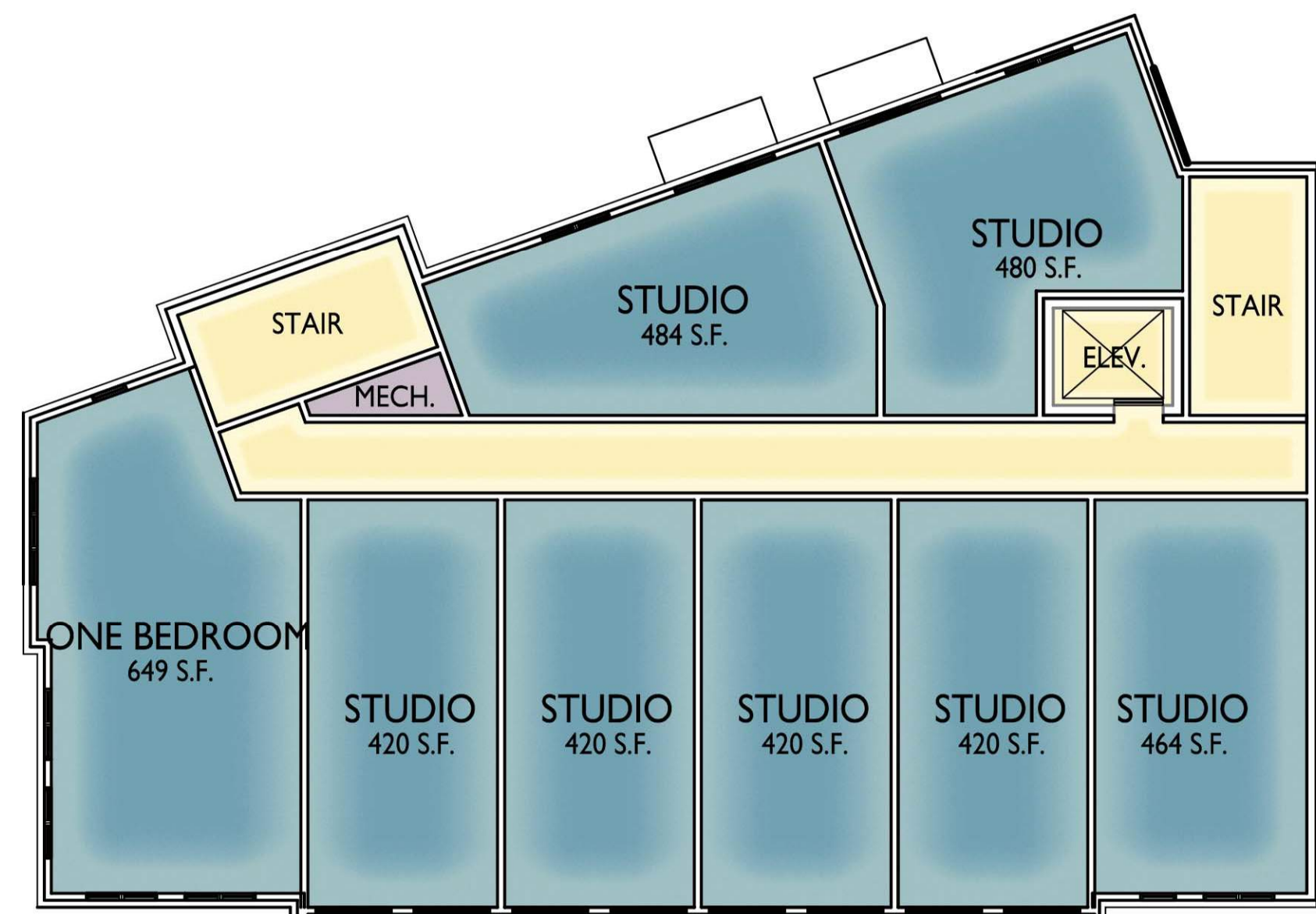
SECOND FLOOR



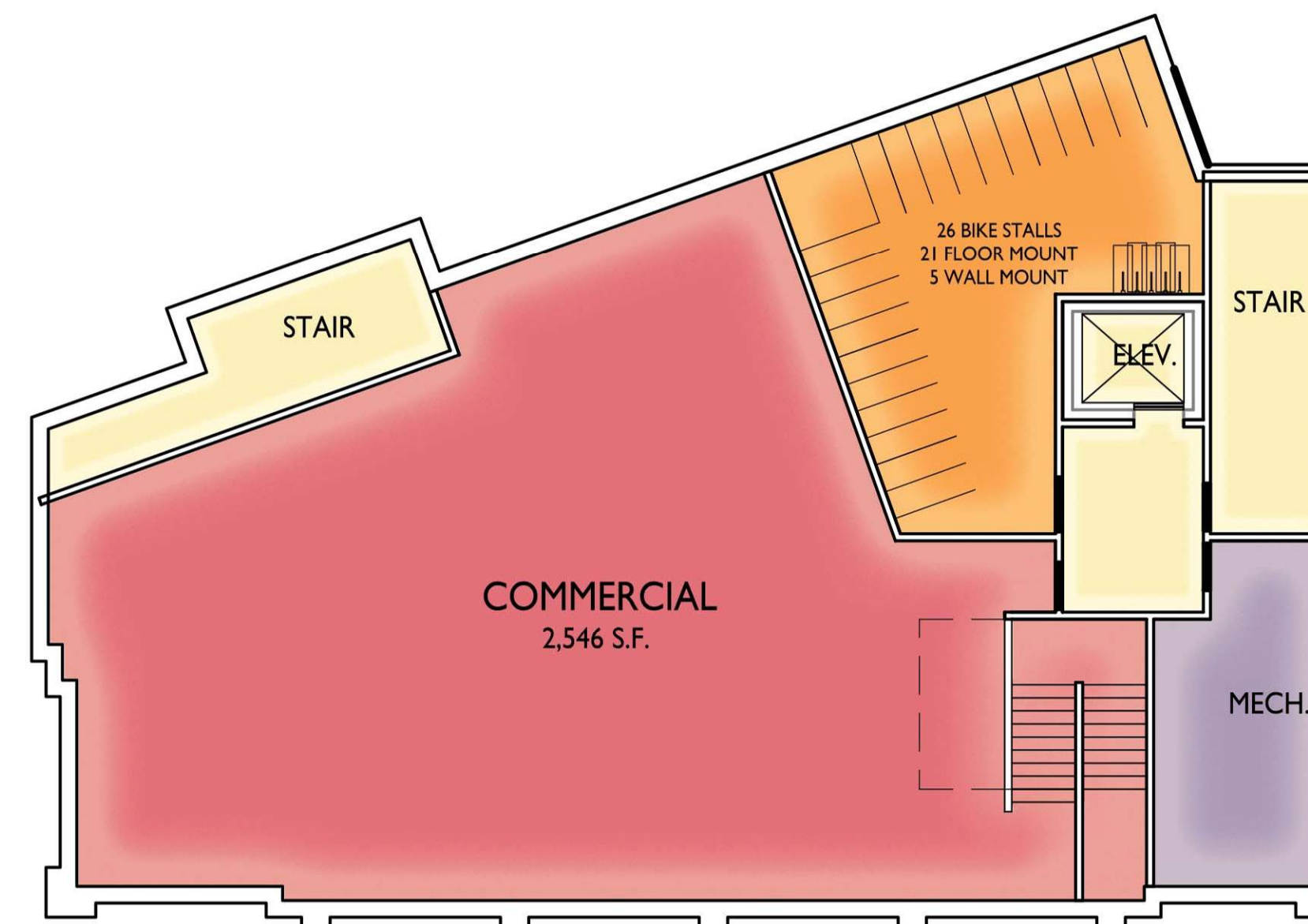
FOURTH FLOOR



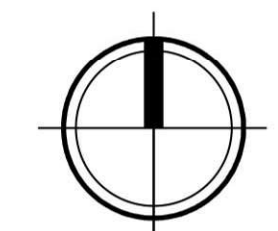
FIRST FLOOR



THIRD FLOOR



BASEMENT



Floor Plans  
432- 436 State St.  
February 9, 2022













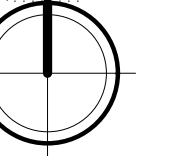




knothe bruce  
ARCHITECTS

Phone: 608.836.3690 7601 University Ave. #201  
Middleton, WI 53562

TRUE NORTH



KEY PLAN

ISSUED  
Issued - August 16, 2021

PROJECT TITLE  
434-444 State  
Street

SHEET TITLE  
COLOR EXTERIOR  
ELEVATIONS

SHEET NUMBER

A-2.3  
PROJECT NUMBER 1939

© Knothe & Bruce Architects, LLC

NOT FOR CONSTRUCTION

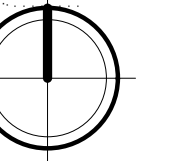


1 COLOR ELEVATION - SOUTH  
1/8" = 1'-0"

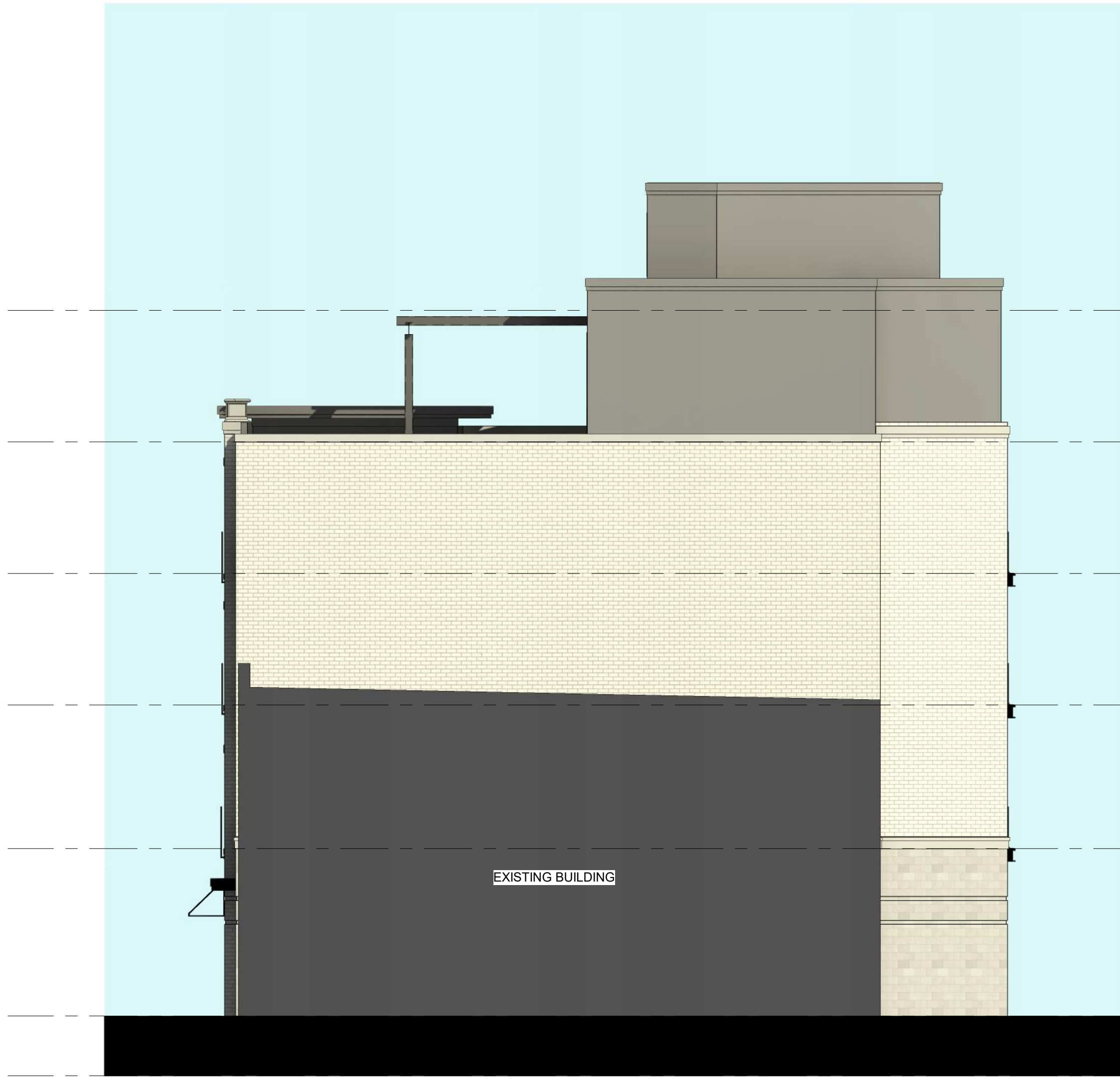


2 COLOR ELEVATION - WEST  
1/8" = 1'-0"

EXTERIOR MATERIAL SCHEDULE		
BUILDING ELEMENT	MANUFACTURER	COLOR
(#1) - VERTICAL METAL SIDING	CMG	WEATHERED ZINC
COMPOSITE TRIM	CMG	COLOR TO MATCH ADJ. TRIM/SIDING
(#2) - COMPOSITE SIDING	TBD	WOODTONE - OLD CHERRY
(#3) - BRICK VENEER	INTERSTATE BRICK	ARCTIC WHITE
(#4) - MASONRY VENEER	ROCKCAST	CRYSTAL WHITE
(#5) - CAST STONE BANDS & SILLS	ROCKCAST	CRYSTAL WHITE
(#6) - COMPOSITE WINDOWS	ANDERSEN 100	BLACK
(#7) - ALUM. STOREFRONT	N/A	BLACK
(#8) - INSULATED METAL DOORS/FRAMES	N/A	BLACK
CANOPY & BAY SOFFITS	TBD	COLOR TO MATCH ADJ. TRIM/SIDING
(#9) - TENSION ROD DECK ASSEMBLY	N/A	BLACK
(#10) - RAILINGS & HANDRAILS	SUPERIOR	BLACK
TREATED-EXPOSED DECK BEAMS	N/A	BROWN TREATED



NOT FOR CONSTRUCTION



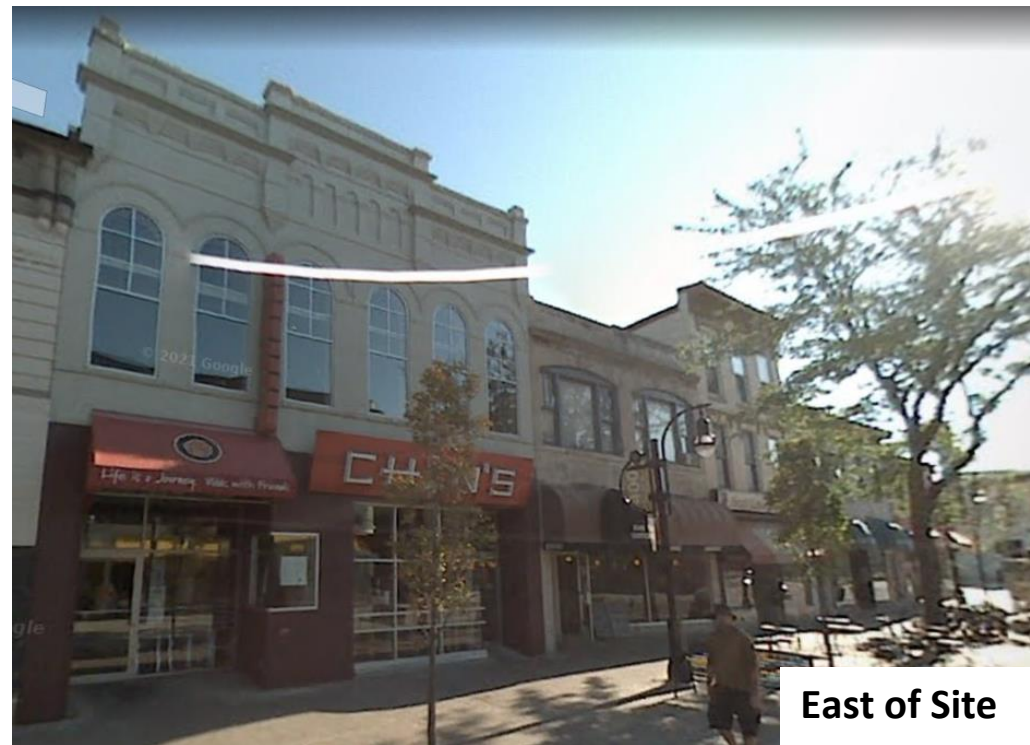
**2** COLOR ELEVATION - EAST  
A-2.4 1/8" = 1'-0"



**1** COLOR ELEVATION - NORTH  
A-2.4 1/8" = 1'-0"

EXTERIOR MATERIAL SCHEDULE		
BUILDING ELEMENT	MANUFACTURER	COLOR
(#1) - VERTICAL METAL SIDING	CMG	WEATHERED ZINC
COMPOSITE TRIM	CMG	COLOR TO MATCH ADJ. TRIM/SIDING
(#2) - COMPOSITE SIDING	TBD	WOODTONE - OLD CHERRY
(#3) - BRICK VENEER	INTERSTATE BRICK	ARCTIC WHITE
(#4) - MASONRY VENEER	ROCKCAST	CRYSTAL WHITE
(#5) - CAST STONE BANDS & SILLS	ROCKCAST	CRYSTAL WHITE
(#6) - COMPOSITE WINDOWS	ANDERSEN 100	BLACK
(#7) - ALUM. STOREFRONT	N/A	BLACK
(#8) - INSULATED METAL DOORS/FRAMES	N/A	BLACK
CANOPY & BAY SOFFITS	TBD	COLOR TO MATCH ADJ. TRIM/SIDING
(#9) - TENSION ROD DECK ASSEMBLY	N/A	BLACK
(#10) - RAILINGS & HANDRAILS	SUPERIOR	BLACK
TREATED-EXPOSED DECK BEAMS	N/A	BROWN TREATED

430, 432, 444  
STATE STREET  
MADISON, WI  
CONTEXTUAL



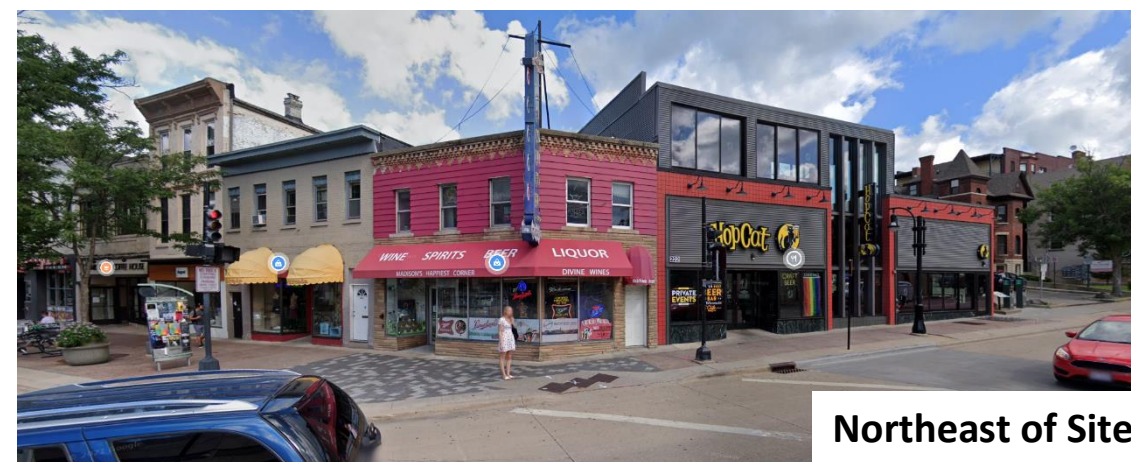
East of Site



West of Site



South of Site



Northeast of Site



Southeast of Site



North of Site



West of Site



West of Site

430, 432, 444  
STATE STREET  
MADISON, WI  
CONTEXTUAL

