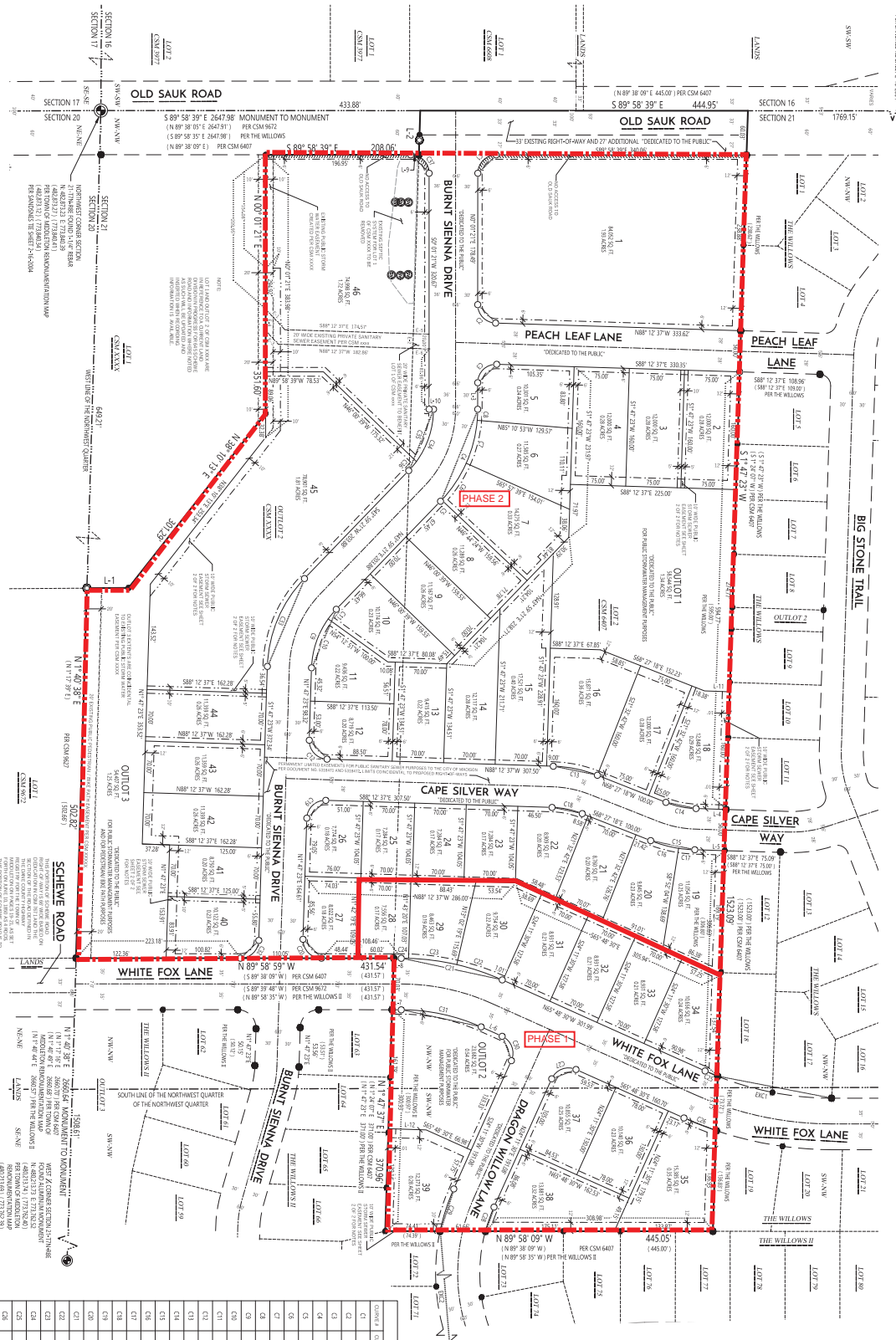


NORTH 1/4 SECTION 21, T17N, R08E
 20th REVISION (11/2018)
 OWNER: THERESA A. BEEBE
 (A428701) / THE WILLOWS
 PREPARED BY: JAMES T. WILSON
 PROFESSIONAL SURVEYOR LICENSE NO. 27-014

LOT 7 OF CERTIFIED SURVEY MAP NO. 6407 RECORDED ON MAY 21, 1991, IN VOLUME 31 OF CERTIFIED SURVEY MAPS XXXXX, RECORDED ON XXXXXX, XX, 2018. IN VOLUME XX OF CERTIFIED SURVEY MAPS, ON PAGES XXX-XXX, XXX-XXX, ALL BEING A PART OF THE NORTHWEST QUARTER OF THE NORTHWEST QUARTER AND SOUTHWEST QUARTER OF THE NORTHWEST QUARTER OF SECTION 21, TOWN 7 NORTH, RANGE 8 EAST, COUNTY OF MADISON, DADE COUNTY, WISCONSIN.

CHAPEL VIEW



LOOK HERE TO SCALE



PREPARED FOR:
 ENCORE HOMES, INC.
 8660 CHAFFIN ROAD
 SUITE 200
 MADISON, WI 53711
 PH: 608.833.1111
 FAX: 608.833.1122
 WWW.ENCOREHOMES.COM

DATE OF SURVEY: 05/11/2018
 DATE OF PLOTTING: 06/11/2018

Department of Administration

There are no objections to this plat with respect to

Week 2018.5, 25th (6, 28, 29) and 29th (1) and (2),

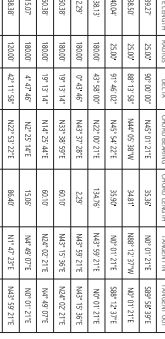
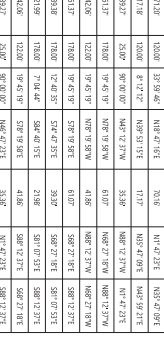
Week 2018.48 provided by s. 250.12, Wis. Stats.

Certified _____

SECTION	TRACED	REMARKS	REMARKS	REMARKS
C1	362.57	520.73	180.60	442.07
C2	84.00	520.73	180.60	442.07
C3	40.87	520.73	180.60	442.07
C4	19.13	520.73	180.60	442.07
C5	2.87	520.73	180.60	442.07
C6	0.87	520.73	180.60	442.07
C7	0.87	520.73	180.60	442.07
C8	0.87	520.73	180.60	442.07
C9	0.87	520.73	180.60	442.07
C10	0.87	520.73	180.60	442.07
C11	0.87	520.73	180.60	442.07
C12	0.87	520.73	180.60	442.07
C13	0.87	520.73	180.60	442.07
C14	0.87	520.73	180.60	442.07
C15	0.87	520.73	180.60	442.07
C16	0.87	520.73	180.60	442.07
C17	0.87	520.73	180.60	442.07
C18	0.87	520.73	180.60	442.07
C19	0.87	520.73	180.60	442.07
C20	0.87	520.73	180.60	442.07
C21	0.87	520.73	180.60	442.07
C22	0.87	520.73	180.60	442.07
C23	0.87	520.73	180.60	442.07
C24	0.87	520.73	180.60	442.07
C25	0.87	520.73	180.60	442.07
C26	0.87	520.73	180.60	442.07
C27	0.87	520.73	180.60	442.07
C28	0.87	520.73	180.60	442.07
C29	0.87	520.73	180.60	442.07
C30	0.87	520.73	180.60	442.07
C31	0.87	520.73	180.60	442.07
C32	0.87	520.73	180.60	442.07
C33	0.87	520.73	180.60	442.07
C34	0.87	520.73	180.60	442.07
C35	0.87	520.73	180.60	442.07
C36	0.87	520.73	180.60	442.07
C37	0.87	520.73	180.60	442.07
C38	0.87	520.73	180.60	442.07
C39	0.87	520.73	180.60	442.07
C40	0.87	520.73	180.60	442.07
C41	0.87	520.73	180.60	442.07
C42	0.87	520.73	180.60	442.07
C43	0.87	520.73	180.60	442.07
C44	0.87	520.73	180.60	442.07
C45	0.87	520.73	180.60	442.07
C46	0.87	520.73	180.60	442.07
C47	0.87	520.73	180.60	442.07
C48	0.87	520.73	180.60	442.07
C49	0.87	520.73	180.60	442.07
C50	0.87	520.73	180.60	442.07

NOTES:

1. FIELDWORK CONDUCTED BY THE SURVEYOR.
2. ALL DIMENSIONS ARE IN FEET AND DECIMALS THEREOF.
3. ALL REFERENCE TO THE MERIDIAN IS TO THE MERIDIAN OF MADISON, WISCONSIN.
4. ALL CORNERS AND POINTS ARE TO BE MARKED AND Labeled AS SHOWN ON THE PLAT.
5. THE BOUNDARIES OF THE SUBJECT PROPERTY ARE TO BE AS SHOWN ON THE PLAT.
6. THE SURVEYOR'S OFFICE IS LOCATED AT 1000 EAST WISCONSIN AVENUE, MADISON, WISCONSIN.
7. SEE SHEET FOR FURTHER DETAILS.



SHEET 1 OF 2 SHEETS