

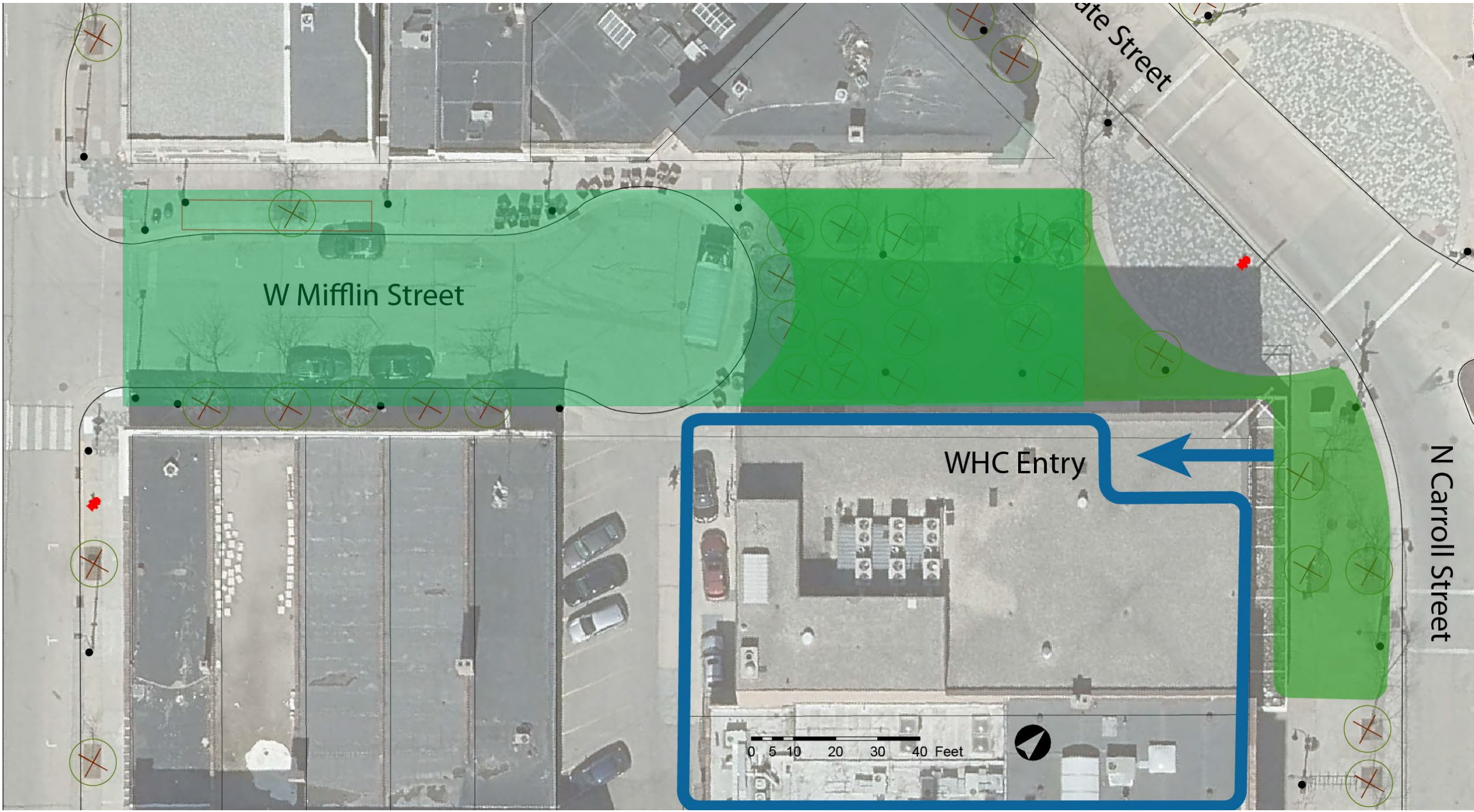


Philosophers' Grove / Mifflin  
Plaza at the top of State Street



## The Plaza is surrounded by busy Cultural & Civic Spaces:

- Overture Center: 700,000 experiences each year
- Central Library: 210,00+ visitors per year
- Wisconsin History Center: Estimated 200,000 guests and 60,000 PK-12 students per year
- Veteran's Museum: 120,000+ Visitors per year
- Dane County Farmers' Market 15K - 20K visitors per week



W Mifflin Street

WHC Entry

N Carroll Street

0 5 10 20 30 40 Feet



**Red lines: Fire Access Lanes**

**Green Lines: Accessible Pedestrian Route**

**Orange Line: Bike Lanes**

**Orange Circle: Delivery truck turning radius**

**Purple Ovals: Vending areas**

**Blue Circle: Size of Capitol Dome in Granite**

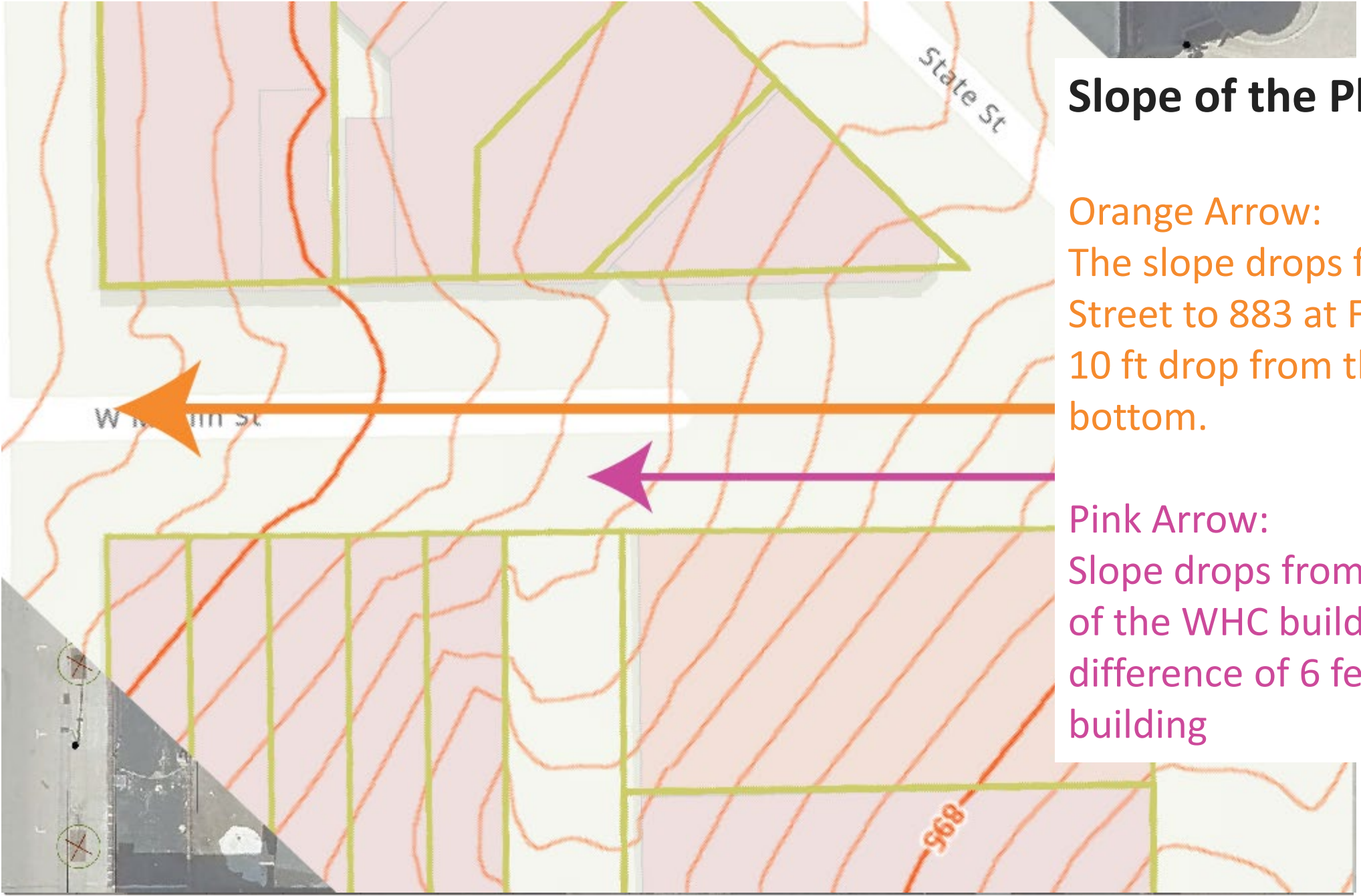
0 5 10 20 30 40 Feet



## Entries onto the Plaza

- Red Arrows: vehicular & delivery access
- Blue Arrow: future pedestrian access to Wisconsin History Center
- Orange Arrow: future entrance to new development - exact location unknown
- Green Arrows: access to existing businesses on W Mifflin St.





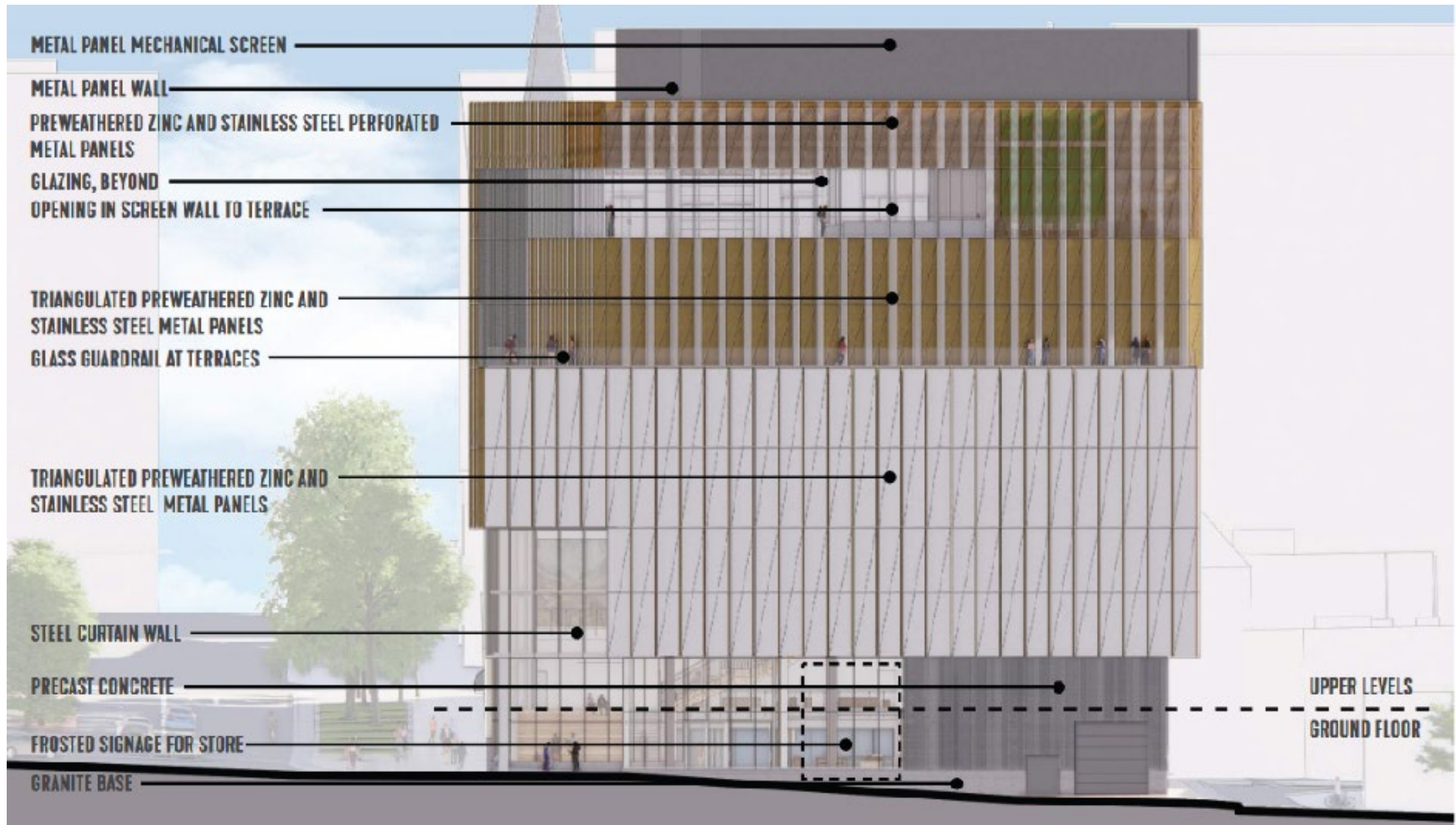
## Slope of the Plaza

**Orange Arrow:**  
The slope drops from 893 at State Street to 883 at Fairchild Street = 10 ft drop from the top to the bottom.

**Pink Arrow:**  
Slope drops from 894 at the corner of the WHC building to 888. A difference of 6 feet along the WHC building



View of State Street Intersection looking down W Mifflin Plaza



View of the WHC facing the Plaza



# Discussion Questions

1. What is your reaction to the existing space?
2. Considering competing uses, how could the space better interact with the History Center and other downtown uses?
3. Are there examples of other small public spaces?
4. What makes you most excited about a redesign of the space?
5. What are you most concerned about?
6. What are your ideas?

# Existing Space

- Sterile, dead - only concrete
- Feels like a cut through, not a place
- Don't know what it is for
- Competing uses - could be better with lights, color
- Unsafe feeling, tree canopy blocks light
- Need to improve appearance of adjacent facades

# Ideas for future space

- Flexible, dynamic and active
- Lighting – vivid, interactive
- Opportunity to tell Madison's story, including indigenous
- Consistency of design with top of state
- Extend space to Fairchild
- Compliment History Center
- Art
- Four season space

# Next Steps

- May-August
  - Staff led design process
  - 2-3 charrettes
- September
  - Public meeting
  - DCC meeting
- October
  - Revise based on feedback
  - Design development
- November
  - Design drawings and approval process