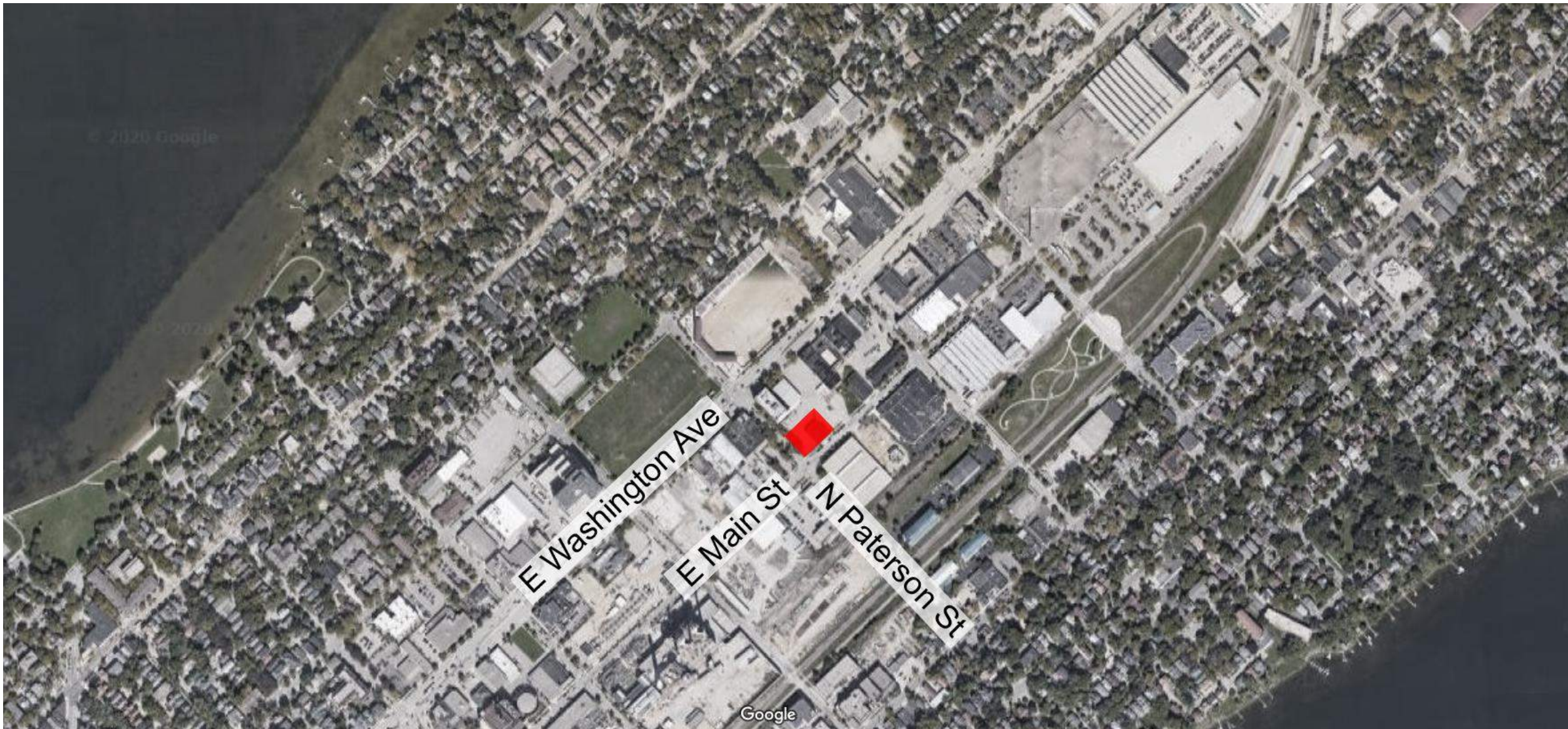




May 27, 2020 Urban Design Commission – 902 E Main Street
Initial – Final Approval

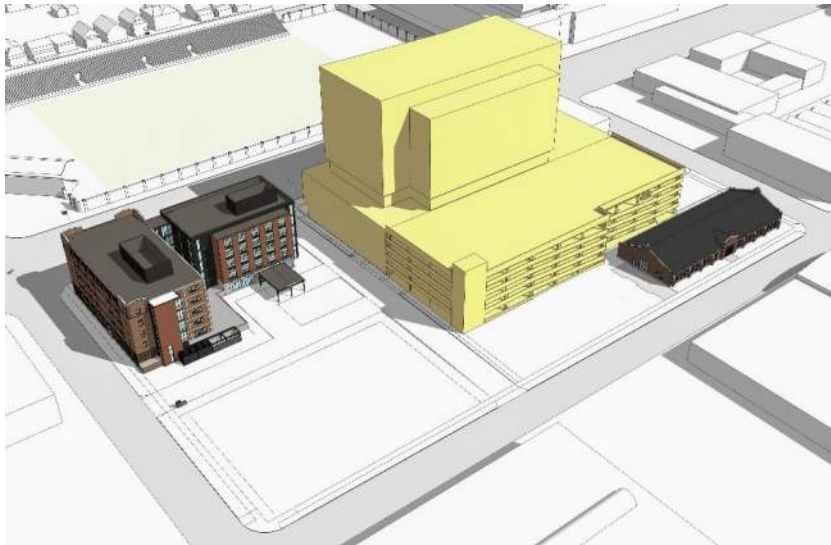




Site Locater Aerial



Site Context Photos



Phase 1



Phase 2



Phase 3

Site Development Phasing



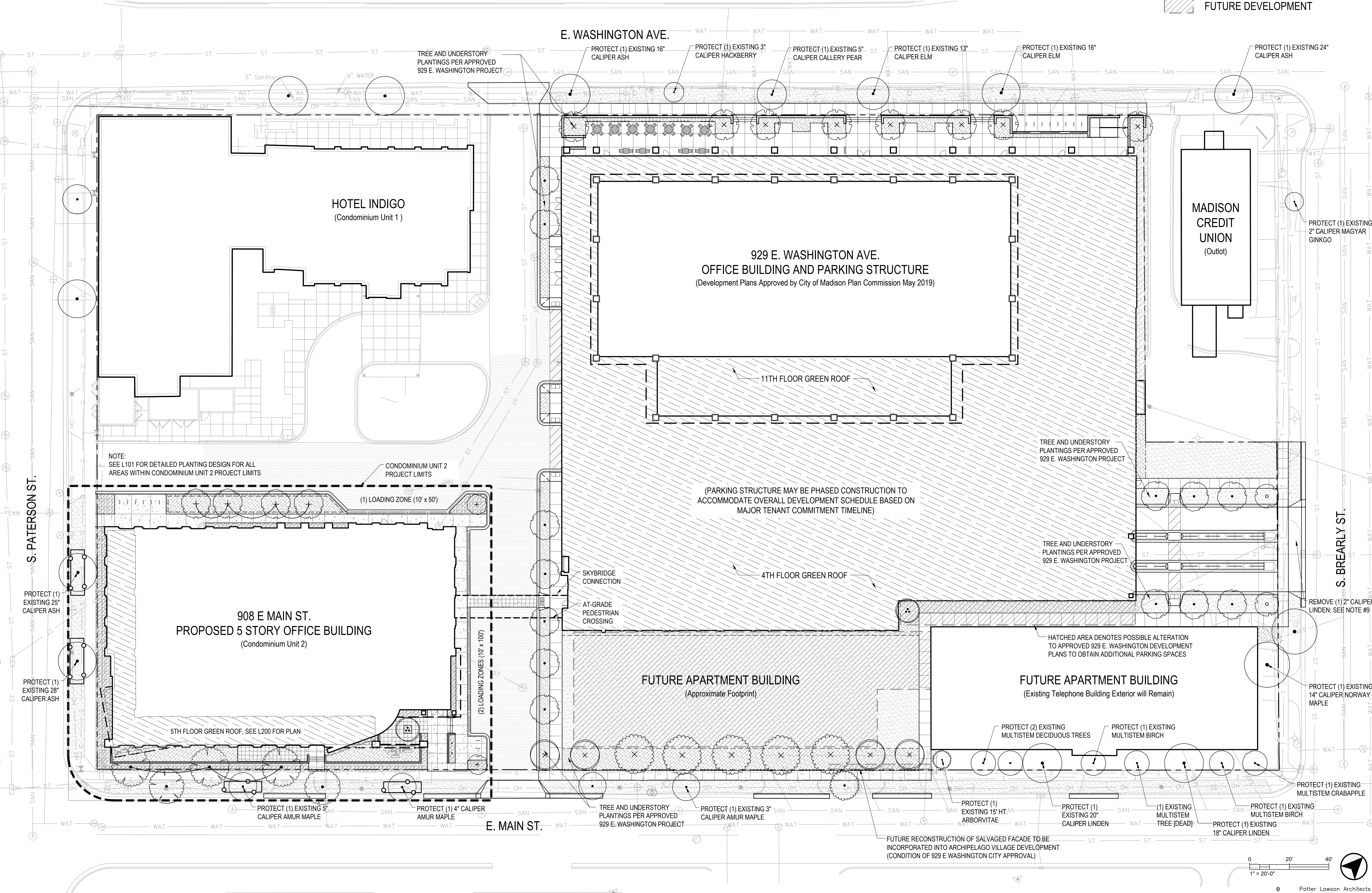
Aerial

NOTES

- IT IS THE CONTRACTOR'S RESPONSIBILITY TO FIELD VERIFY SURVEY INFORMATION AND SITE CONDITIONS PRIOR TO START OF CONSTRUCTION AND REPORT ANY DISCREPANCIES. CONTRACTOR SHALL CONTACT DIGGER'S HOTLINE TO LOCATE ALL PUBLIC AND PRIVATE UTILITIES PRIOR TO THE START OF CONSTRUCTION. ANY DAMAGE CAUSED TO EXISTING UTILITIES, EITHER SHOWN OR NOT, SHALL BE REPAIRED AND PAID FOR AT THE CONTRACTOR'S EXPENSE.
- CONTRACTOR SHALL PROTECT BENCHMARKS.
- ALL EXISTING PLANT MATERIAL IS SHOWN AT EXISTING, APPROXIMATED SIZE PER CITY OF MADISON STANDARDS.
- ALL WRAPPINGS, WIRE BASKETS, BURLAP, AND OTHER MISCELLANEOUS MATERIAL SHALL BE COMPLETELY REMOVED FROM ALL SHRUB AND TREE ROOT BALLS PRIOR TO INSTALLATION.
- ANY LAWN OR LANDSCAPED AREAS OUTSIDE OF THE CONSTRUCTION BOUNDARY THAT ARE DISTURBED SHALL BE RE-SEEDED AND/OR REPAIRED WITH ORIGINAL MATERIALS AND TO PRE-DISTURBANCE STANDARDS AT NO COST TO THE OWNER OR CITY.
- CONTRACTOR IS RESPONSIBLE FOR WATERING AND MAINTENANCE OF PLANT MATERIAL - SEE SPECIFICATIONS FOR MORE INFORMATION.
- CONTRACTOR SHALL CONTACT CITY FORESTRY (BRAD HOFMANN, BHOFMANN@CITYOFMADISON.COM - OR - 608-266-4816) AT LEAST ONE WEEK PRIOR TO PLANTING IN THE RIGHT-OF-WAY TO SCHEDULE INSPECTING THE NURSERY STOCK, REVIEW PLANTING SPECIFICATIONS AND INDICATE PLANTING LOCATIONS WITH THE LANDSCAPE CONTRACTOR.
- CONTRACTOR SHALL INSTALL TREE PROTECTION FENCING IN THE AREA BETWEEN THE CURB AND SIDEWALK AND EXTEND IT AT LEAST 5-FEET FROM THE OUTSIDE EDGE OF THE TREE CANOPY ALONG THE LENGTH OF THE TERRACE. NO EXCAVATION IS PERMITTED WITHIN 5-FEET OF THE OUTSIDE EDGE OF A TREE TRUNK. IF EXCAVATION WITHIN 5-FEET OF ANY TREE IS NECESSARY, CONTRACTOR SHALL CONTACT CITY FORESTRY (BRAD HOFMANN) PRIOR TO EXCAVATION TO ASSESS THE IMPACT TO THE TREE AND ROOT SYSTEM. TREE PRUNING SHALL BE COORDINATED WITH CITY FORESTRY. TREE PROTECTION SPECIFICATIONS CAN BE FOUND IN SECTION 107.13 OF CITY OF MADISON STANDARD SPECIFICATIONS FOR PUBLIC WORKS CONSTRUCTION. ANY TREE REMOVALS THAT ARE REQUIRED FOR CONSTRUCTION AFTER THE DEVELOPMENT PLAN IS APPROVED WILL REQUIRE AT LEAST 72-HOUR WAIT PERIOD BEFORE A TREE REMOVAL PERMIT CAN BE ISSUED BY FORESTRY, TO NOTIFY THE ALDER OF THE CHANGE IN THE TREE PLAN.
- A TREE REMOVAL WAS APPROVED FOR (1) 2" CALIPER LINDEN TREE ALONG BREARLY STREET DUE TO DRIVEWAY INSTALLATION INTO THE PROPOSED PARKING STRUCTURE. THIS REMOVAL WAS INCLUDED IN THE 929 E WASHINGTON DEVELOPMENT PLANS APPROVED BY THE CITY OF MADISON PLAN COMMISSION IN MAY, 2019. CITY FORESTRY WILL ISSUE A REMOVAL PERMIT FOR THIS TREE AS PART OF ANY PHASED CONSTRUCTION OF THE PARKING STRUCTURE THAT INCLUDES CONSTRUCTION OF THE DRIVEWAY ENTRANCE OFF OF BREARLY STREET. CONTACT BRAD HOFFMAN TO OBTAIN THE STREET TREE REMOVAL PERMIT.

LEGEND

- PROJECT LIMITS
- - - PROPERTY LINE
- TREE PROTECTION FENCE
- HEAVY DUTY ASPHALT PAVEMENT
- CONCRETE PAVEMENT
- PLANTING BED WITH STONE MULCH
- PLANTING BED WITH COMPOST MULCH
- NEW LAWN FROM SEED
- GREEN ROOF
- FUTURE DEVELOPMENT



Notes:



Archipelago Village

WHEDA Office Building - Condominium Unit 2

908 E. Main Street
Madison, Wisconsin

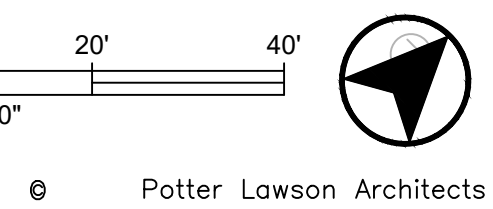
Project #: 2016.36.03

Date Issuance/Revisions Symbol

03/11/2020 MADISON LAND USE APPLICATION

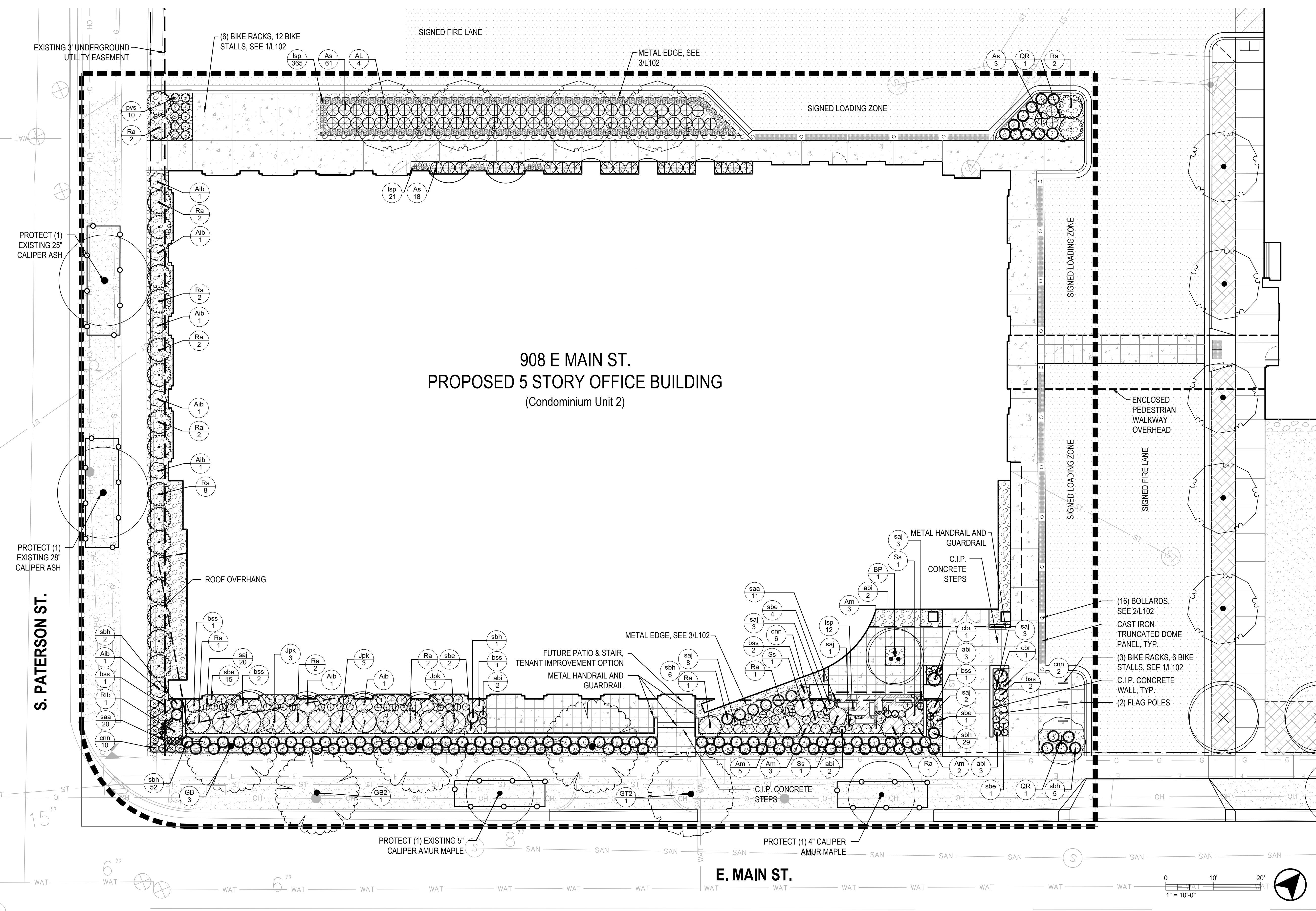
ARCHIPELAGO - LANDSCAPE OVERVIEW

L100



PLANT SCHEDULE

DECIDUOUS TREES					EVERGREEN SHRUBS				
CODE	BOTANICAL / COMMON NAME	CONT	SIZE	HEIGHT	CODE	BOTANICAL / COMMON NAME	CONT	SIZE	QTY
BP	Betula populifolia 'Whitespire Senior.' / Whitespire Birch - Multistemmed	B & B	8' HT. (MIN.), MULTI-STEMMED		Jpk	Juniperus chinensis 'Pfitzeriana Kallay' / Kallays Compact Pfitzer Juniper	3 gal	18" HT. (MIN.)	7
GB2	Ginkgo biloba 'Princeton Sentry' / Princeton Sentry Ginkgo	B & B	2' Cal	Single, Straight Leader; Inspection by City Forestry Required.					
GB	Ginkgo biloba 'Princeton Sentry' / Princeton Sentry Maidenhair Tree	B & B	2.5' Cal	Single, straight leader; match specimens; branching shall start at 5'-0" min.					
GT2	Gleditsia triacanthos 'Draves' PP 21698 / Street Keeper Honey Locust	B & B	2' Cal	Single, Straight Leader; Inspection by City Forestry Required.					
QR	Quercus robur x alba 'Crimschmidt' TM / Crimson Spire Oak	B & B	2' Cal	Single, straight leader; match specimens; branching shall start at 5'-0" min.					
ORNAMENTAL TREES					HERBACEOUS PERENNIALS				
CODE	BOTANICAL / COMMON NAME	CONT	SIZE	HEIGHT	CODE	BOTANICAL / COMMON NAME	CONT	SIZE	QTY
AL	Amelanchier laevis 'Spring Flurry' / Spring Flurry Serviceberry	B & B	2' Cal	Single, straight leader; match specimens; branching shall start at 5'-0" min.	abi	Ansonia tabernaemontana 'Blue Ice' / Blue Ice Blue Star	4" pot	CONT.	12
DECIDUOUS SHRUBS					ORNAMENTAL GRASSES				
CODE	BOTANICAL / COMMON NAME	CONT	SIZE	NOTES	CODE	BOTANICAL / COMMON NAME	CONT	SIZE	QTY
As	Aronia melanocarpa 'Low Scape Hedger' / Low Scape Hedger Chokeberry	2 gal	18" HT. (MIN.)		cnn	Calamintha nepeta ssp. nepeta / Lesser Calamint	4" pot	CONT.	18
Am	Aronia melanocarpa 'Low Scape Mound' / Low Scape Mound Black Chokeberry	2 gal	12" HT. (MIN.)		lsp	Liriope spicata / Creeping Lily Turf	4" pot	CONT.	398
Aib	Aronia melanocarpa 'Morton' / Iroquois Beauty Black Chokeberry	3 gal	24" HT. (MIN.)		saj	Sedum x 'Matrona' / Matrona Sedum	4" pot	CONT.	40
Ra	Rhus aromatica 'Gro-Low' / Gro-Low Fragrant Sumac	2 gal	18" SP. (MIN.)		sbe	Stachys byzantina 'Big Ears' / Big Ears Lambs Ear	4" pot	CONT.	23
Rib	Rhus typhina 'Balliger' TM / Tiger Eyes Sumac	5 gal	36" HT. (MIN.)		cbr	Calamagrostis brachytricha / Reed Grass	1 gal	CONT.	2
					pvs	Panicum virgatum 'Shenendoh' / Shenendoh Switch Grass	1 gal	CONT.	10
					sbh	Schizachyrium scoparium 'Blue Heaven' / Blue Heaven Little Bluestem	1 gal	CONT.	105
					saa	Sesleria autumnalis / Autumn Moor Grass	4" pot	CONT.	31



LEGEND

- PROJECT LIMITS
- PROPERTY LINE
- TREE PROTECTION FENCE
- HEAVY DUTY ASPHALT PAVEMENT
- CONCRETE PAVEMENT
- PLANTING BED WITH STONE MULCH
- PLANTING BED WITH COMPOST MULCH
- NEW LAWN FROM SEED

City of Madison Landscape Worksheet

901 East Main Street
March 11, 2020
Traditional Employment Urban Design District 8

Developed Lots	SF	Minimum Open Space Required (SF)	Landscape Units Required	Landscape Points Subtotal
Total Developed Area	15,291	n/a	51	255
			Landscape Points Required	255

Development Frontage - South Paterson Street	LF	Overstory Tree Req. (or x2 for Orn./Evergm. Tree Sub.)	Shrubs Required
Total LF of Street Frontage Between Bldg./Parking & Streets	150	5	25

Element	Point Value	Quantity Proposed	Quantity Existing	Points Achieved
Overstory Deciduous Tree	35	5	0	175
Overstory Evergreen Tree	15	0	0	0
Evergreen Tree	15	0	0	0
Shrub, deciduous	2	26	0	52
Shrub, evergreen	3	7	0	21
Ornamental Grass	2	86	0	172
Ornamental/Decorative Fence or Wall (4 pts/10 LF)	4	15	0	60
Development Frontage Points Total				420

Development Frontage - East Main Street	LF	Overstory Tree Req. (or x2 for Orn./Evergm. Tree Sub.)	Shrubs Required
Total LF of Street Frontage Between Bldg./Parking & Streets	194	6	32

Element	Point Value	Quantity Proposed	Quantity Existing	Points Achieved
Overstory Deciduous Tree	35	1	0	35
Overstory Evergreen Tree	15	4	0	60
Evergreen Tree	15	0	0	0
Shrub, deciduous	2	84	0	168
Shrub, evergreen	3	0	0	0
Ornamental Grass	2	28	0	56
Ornamental/Decorative Fence or Wall (4 pts/10 LF)	4	0	0	0
General Site Plantings Total				319

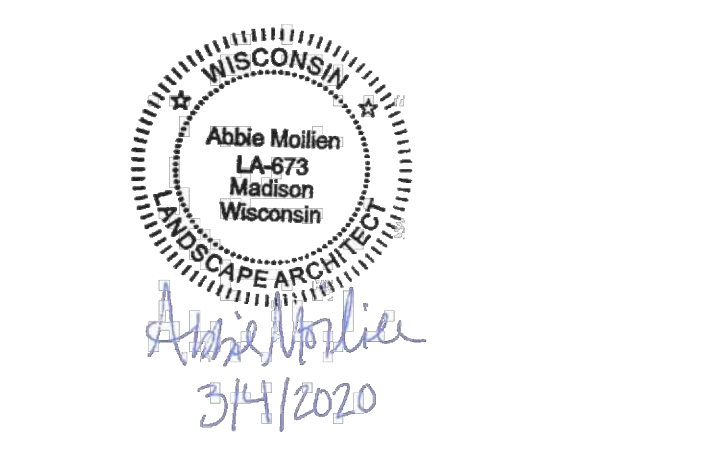
Interior Parking Lots	N/A			
Total Parking Lot Area	n/a			

General Site, Foundation, Screening				
Element	Point Value	Quantity Proposed	Quantity Existing	Points Achieved
Overstory Deciduous Tree	35	1	0	35
Overstory Evergreen Tree	15	4	0	60
Evergreen Tree	15	0	0	0
Shrub, deciduous	2	84	0	168
Shrub, evergreen	3	0	0	0
Ornamental Grass	2	28	0	56
Ornamental/Decorative Fence or Wall (4 pts/10 LF)	4	0	0	0
General Site Plantings Total				319

TOTAL LANDSCAPE POINTS: 409



Notes:



Archipelago Village

WHEDA Office Building - Condominium Unit 2

908 E. Main Street
Madison, Wisconsin

Project #: 2016.36.03

Date: 03/11/2020 Issuance/Revisions: MADISON LAND USE APPLICATION

SITE LANDSCAPE & RESTORATION PLAN

L101

NOTES

GENERAL NOTES:

GREEN ROOF SYSTEM DESIGN:

- General Basis of Design: Monolithic Membrane 612SEV FR Waterproofing by American Hydrotech with EPS rigid insulation with surface conditioner, membrane reinforcement, protection sheet, and root barrier.
- Integrated Leak Detection System. Basis of Design: EFVM by Int'l Leak Detection, Inc.
- Drainage Materials:
 - For Areas under Sedum: Pre-fabricated 3-D drainage and water retention layer with min. compressive strength of 5,000 lb./cu.ft. Basis of Design: "Gardendrain 30" by American Hydrotech.
 - For Areas under Heavy Improvements and Constructions: Pre-fabricated 3-D drainage/water retention layer with min. compressive strength of 21,000 psf. Basis of Design: "Hydrodrain 700" by American Hydrotech.
 - Expanded Lightweight Aggregate: 3/8" - 3/4" ESCS Expanded Shale, Clay and/or Slate considered part of manufacturer's system as fill material for drainage / water retention components, as required. Basis of Design: Expanded Lightweight Aggregate by American Hydrotech.
- Filter Fabric / Geotextile: Non-woven polymeric geotextile fabric. Utilize as part of overall assembly as recommended by manufacturer for protection and/or separation; also utilize in conjunction with edging materials to contain growing media/soil at material boundaries.
- Paver Profile: "Ultimate Assembly" by American Hydrotech
- Green Roof Profile (indicated on drawings as "Built-in-Place Extensive Growing Media, 8-inch depth"): "Intensive Garden Roof Assembly" by American Hydrotech

- Insulation General: Minimum 2 layers of EPS rigid insulation. Basis of Design: "Roofmate" by Dow Plastics and/or Foamular 404/404RB by Owens-Corning. Additional insulation layers may be required to decrease vertical space between the top of assembly and top of finished materials where shallower finished material profiles are desired.
- Roof Drain Assembly: Two-stage protected roof drains by system manufacturer, including inspection chambers to accommodate final roof system heights.

PROJECT REQUIREMENTS:

- Irrigation: Full irrigation design and installation for all vegetated portions of the green roofs including, but not limited to:
 - Booster pump for water transfer to upper floor roof area(s)
 - Advanced controller with Wi-Fi capabilities, moisture sensor
 - 4" spray heads and 4" MP rotors for sedum and meadow areas
 - Tree bubblers, minimum 3 per tree
 - A combination of 1.5" and 2" mainlines
 - Quick coupler valves, isolation valves, RPZ backflow preventor(s)
 - System must provide dynamic psi after the RPZ of 55 psi
- Maintenance: Minimum 2-years for green roof vegetation, cleaning/debris maintenance, inspections.
- Warranty: Manufacturer's Total System Warranty (Membrane + Leakage + Thermal + Wind Speed + Vegetated Roof Component Assemblies + Product and Materials Included). Min. 20-year Warranty Period.
- Miscellaneous: Pre-installation meetings and weekly coordination meetings. As-Built Drawings.

PAVING EDGING AND STONE BALLAST:

PAVING:

- Precast Concrete Pavers for Patio Areas: Concrete pavers with absorption not greater than ASTM C140; no breakage; and maximum 1 percent mass loss when tested for freeze thaw in accordance with ASTM C67, 8,000 psi average compressive strength. Basis of Design: "Expressions" by Tectura Designs/Wausau Tile. Single Sizes: 2'x2' & 2'x3'. 2 different colors to be selected from manufacturer's full range.
 - Paver Supports: provide paver manufacturer's standard SBR rubber, high-density polyethylene, or polyurethane paver support assemblies including adjustable or stackable pedestals, shims, spacer tabs for joint spacing of 1/8".

EDGING AND STONE BALLAST:

- Metal Edging: L-shaped aluminum edging with drainage openings, prefabricated corner sections, clips and connectors. Mill finish. Range of profiles, including extra deep profiles (8+ inches) may be required. Basis of Design: "GeoEdge", 8.5" x 7.5" by Permaloc. Final sizes/profiles may vary; custom fabrication may be required. Edging will be required between the following constructions, at a minimum:
 - Between stone ballast at parapet and planting areas
 - Between stone ballast at building foundation and planted areas
 - Between edge of precast paver areas and adjacent stone ballast
 - Between edge of precast pavers and planted areas

- Precast Concrete Edging: High-density, pressed concrete precast curbing sections specifically designed as part of the overall green roof system, 4-inch x 12-inch height. Basis of Design: Custom Precast by Tectura Design/Wausau Tile.
- Stone Ballast: Basis of Design: Mexican Beach Pebbles, Buff Color, Custom Blend of multiple sizes, 6-inch depth.

GROWING MEDIA, PLANTS AND LANDSCAPE MATERIALS & ACCESSORIES

GROWING MEDIA BLENDS:

- Growing Media for Sedum Carpets: Manufacturer's standard extensive growing media.

PLANTS AND PLANTED MATS/CARPETS:

- Sedum Carpet: Sedum blankets by Sempergreen, selected from grower's standard mixed. Stake with biodegradable EC stakes and/or thin wood lath.
- Perennial Material for Sedum Areas: 4-inch plug perennials to 1-quart pot size. Perennials will be installed into sedum ground layer and growing media below. Perennials will cover approximately 15% of sedum areas.
- Tree Material: Multi-stemmed ornamental trees with integrated rootball anchoring systems for each tree. 6-ht. multi-stemmed tree sizes.

PLANT SCHEDULE

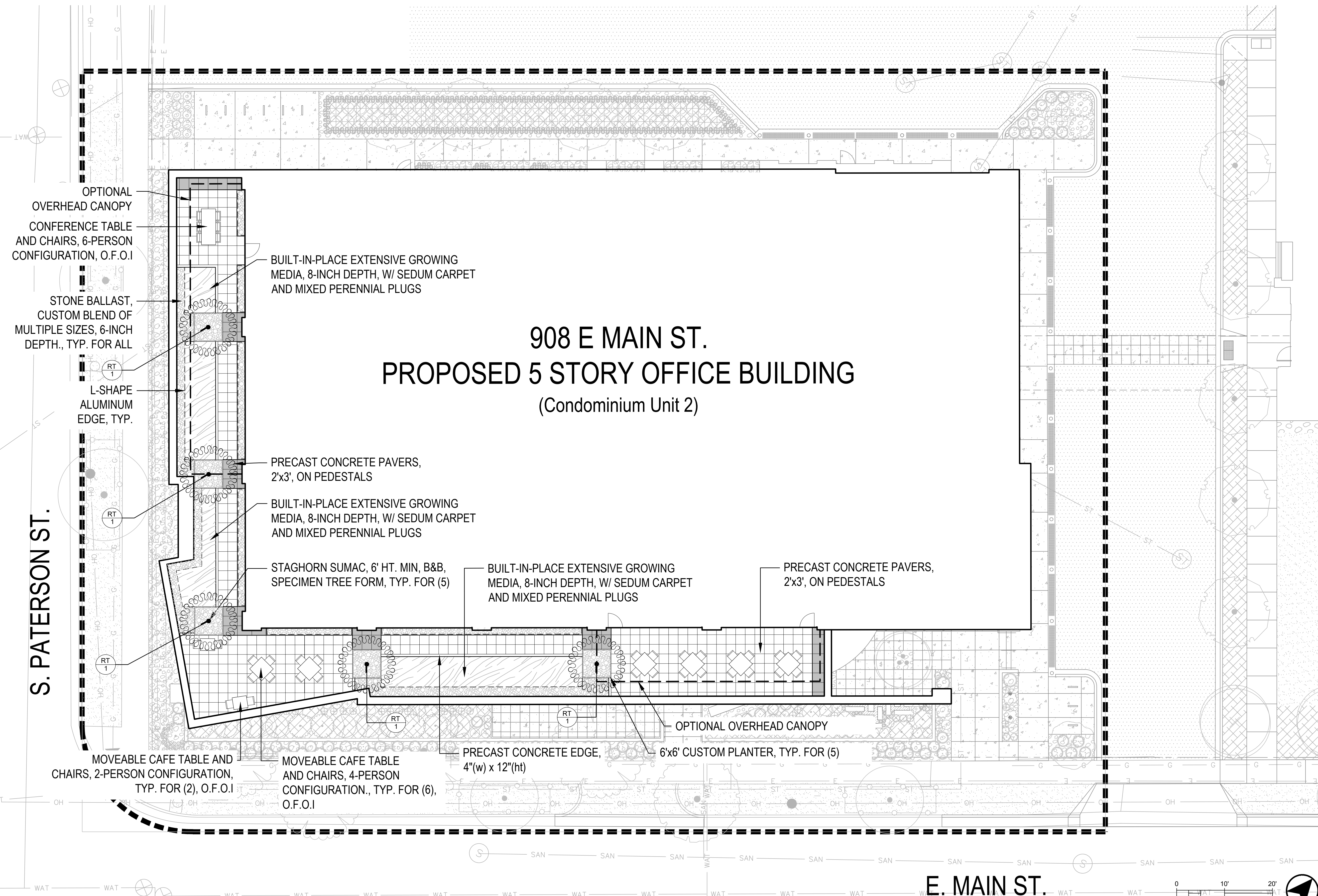
DECIDUOUS TREES	CODE	BOTANICAL / COMMON NAME	CONT	SIZE	QTY
	RT	Rhus typhina SPECIMEN FORM / Staghorn Sumac SPECIMEN FORM	B & B	6' HT (MIN.)	5

SEDUM CARPET SPECIES COMPOSITION: SUBJECT TO AVAILABILITY, THE SEDUM CARPET WILL BE COMPOSED OF THE FOLLOWING SPECIES IN APPROXIMATELY EQUAL QUANTITIES. PRE-GROWN AND DELIVERED TO THE SITE AS A SOD-LIKE MATERIAL:

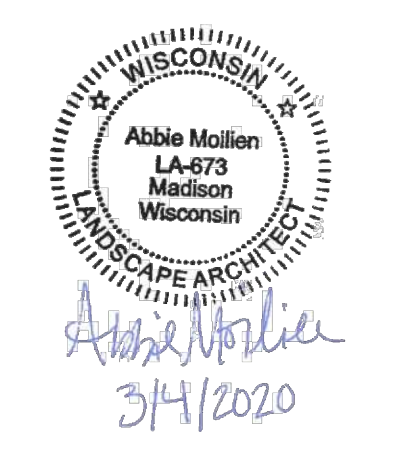
- Sedum spurius 'Fuldaglut'
- Sedum spurius 'John Creech'
- Sedum spurius 'Red Carpet'
- Sedum kamtschaticum
- Sedum kamtschaticum 'Variegatum'
- Sedum kamtschaticum var. floriferum
- Sedum takesimensis 'Golden Carpet'
- Sedum x Immergrunchen
- Sedum subsp. rupestre 'Angelina'
- Sedum subsp. rupestre 'Blue Spruce'
- Sedum acre 'Aureum'
- Sedum acre 'Goldmoss'
- Sedum album 'Coral Carpet'
- Sedum album 'Murale'
- Sedum hispanicum
- Sedum sexangulare
- Sedum stefco

LEGEND

- PROJECT LIMITS
- 2'x2' PRECAST CONCRETE PAVERS (COLOR 1)
- 2'x3' PRECAST CONCRETE PAVERS (COLOR 2)
- STONE BALLAST
- SEDUM CARPET OVER 8" OF EXTENSIVE GROWING MEDIA
- L-SHAPE ALUMINUM EDGE
- 6'x6' CUSTOM FRP PLANTER



Notes:



Archipelago Village

WHEDA Office Building -
Condominium Unit 2

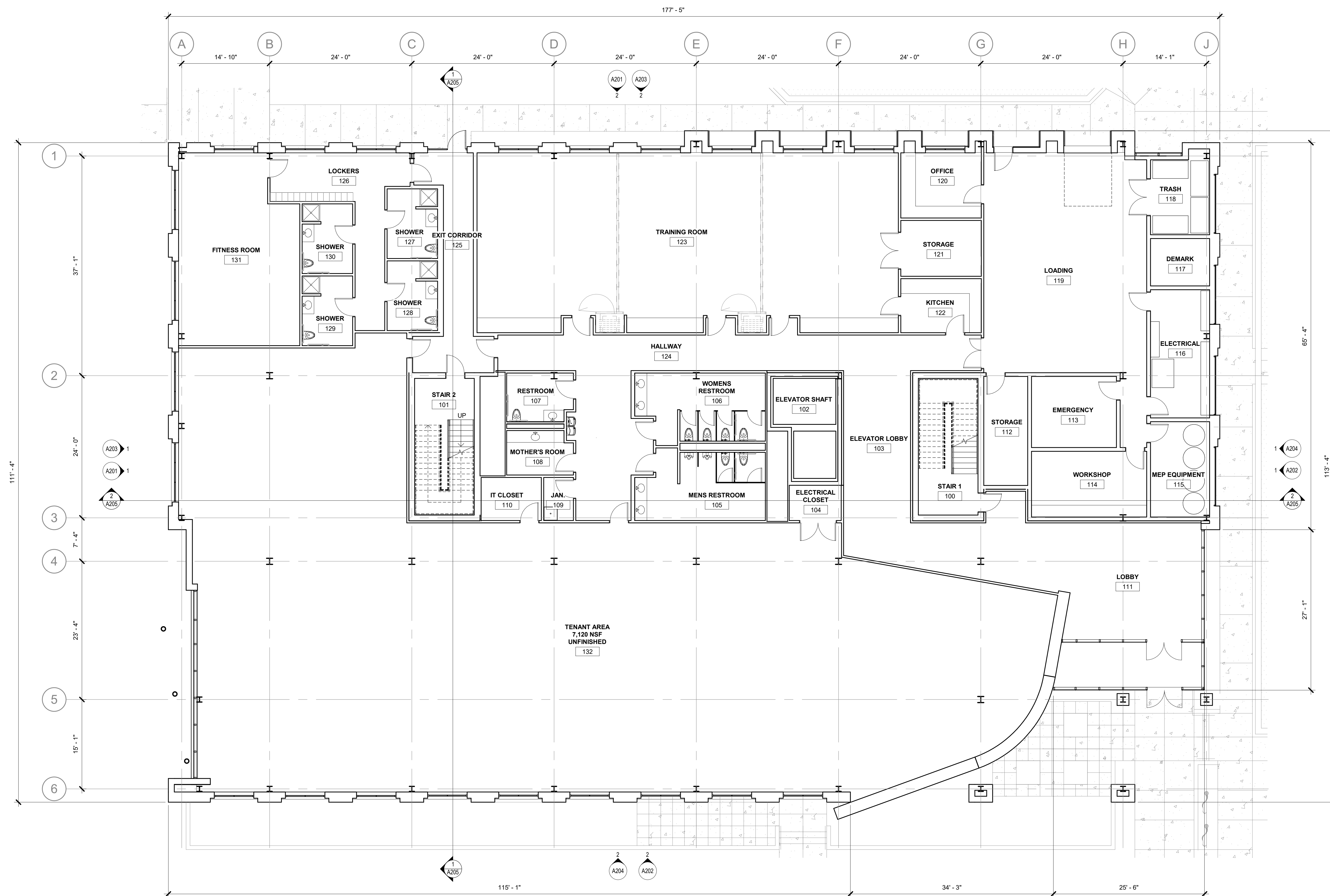
908 E. Main Street
Madison, Wisconsin

Project #: 2016.36.03

Date	Issuance/Revisions	Symbol
03/11/2020	MADISON LAND USE APPLICATION	

**5TH FLOOR GREEN
ROOF PLAN**
L200

Notes:



PRELIMINARY
NOT FOR CONSTRUCTION

Archipelago Village - WHEDA
Office Building
Wisconsin Housing and Economic
Development Authority
908 E. Main St.
Madison, Wisconsin

2016.36.03

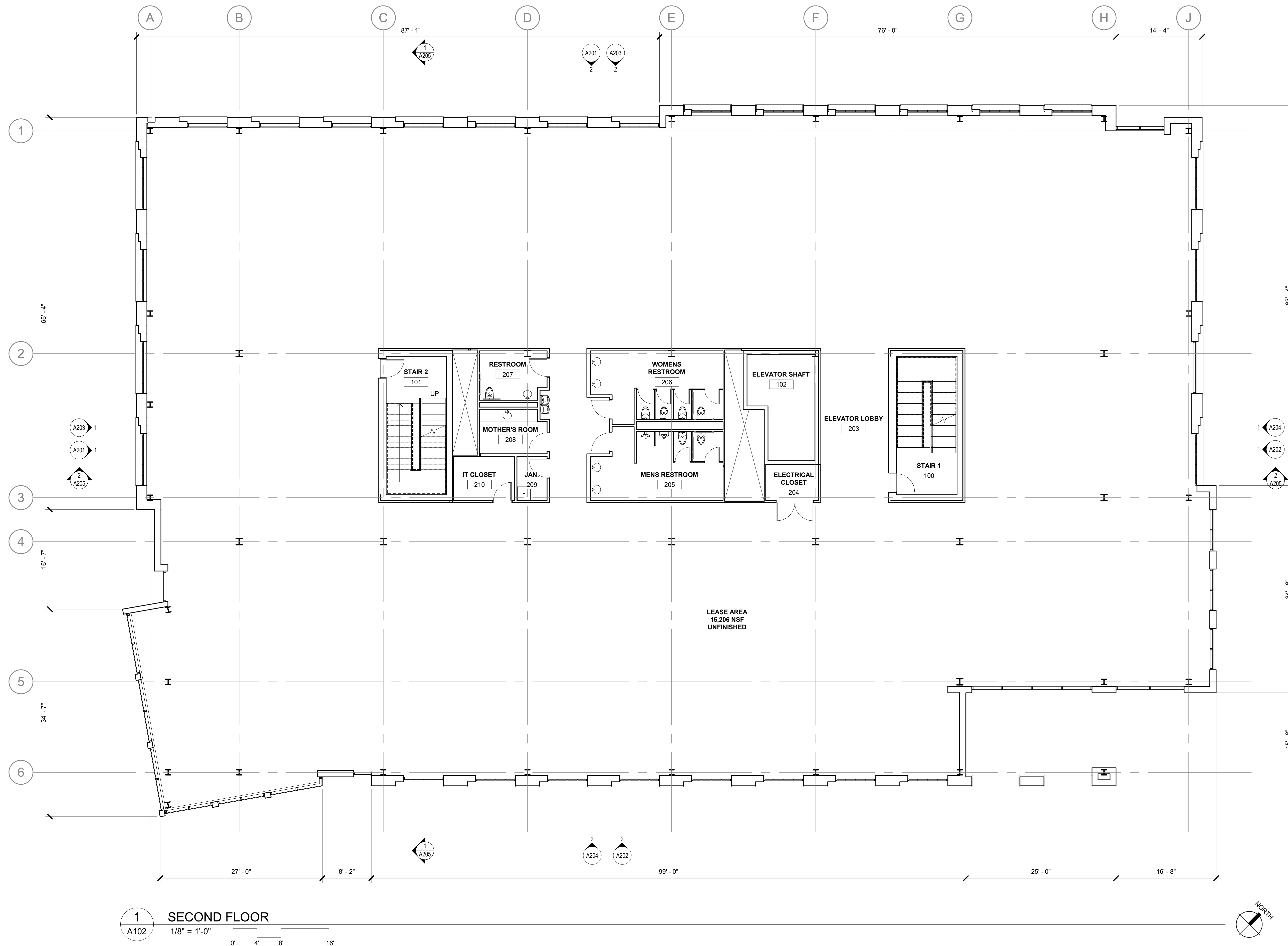
DATE	ISSUANCE/REVISIONS
03/11/2020	LAND USE APPLICATION

1 FIRST FLOOR
1/8" = 1'-0"

**FIRST FLOOR
PLAN**

A101

Notes:



PRELIMINARY
NOT FOR CONSTRUCTION

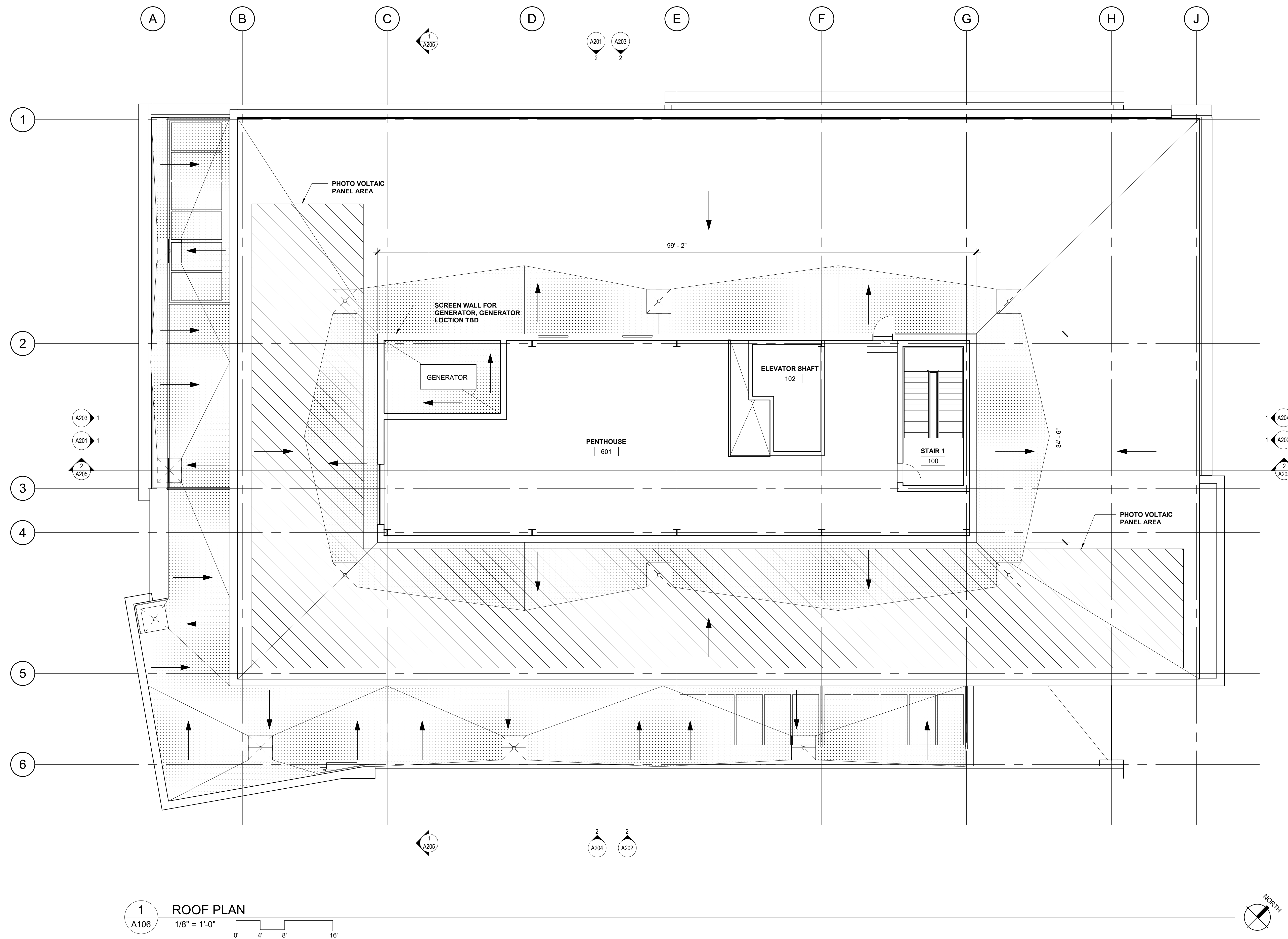
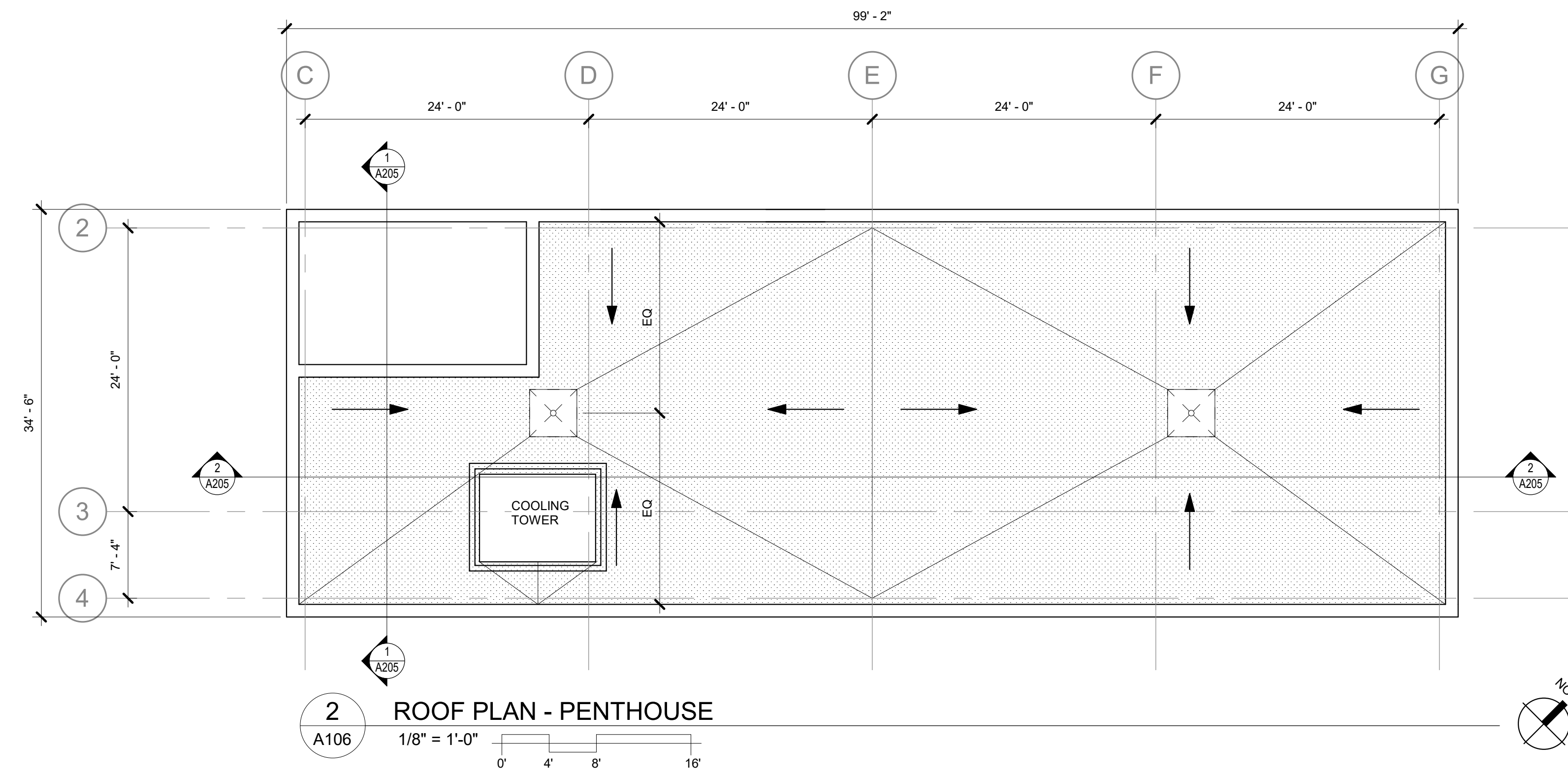
Archipelago Village - WHEDA
Office Building
Wisconsin Housing and Economic
Development Authority
908 E. Main St.
Madison, Wisconsin

2016.36.03

DATE	ISSUANCE/REVISIONS
03/11/2020	LAND USE APPLICATION

SECOND FLOOR
PLAN

A102



- Notes:
- ▭ SLOPED STRUCTURE
 - ▨ TAPERED INSULATION

PRELIMINARY
NOT FOR CONSTRUCTION

Archipelago Village - WHEDA
Office Building
Wisconsin Housing and Economic
Development Authority
908 E. Main St.
Madison, Wisconsin

2016.36.03

DATE	ISSUANCE/REVISIONS
03/11/2020	LAND USE APPLICATION

ROOF PLAN

A106



East Perspective



North Perspective



South Perspective



South East Elevation Perspective



North East Elevation Perspective



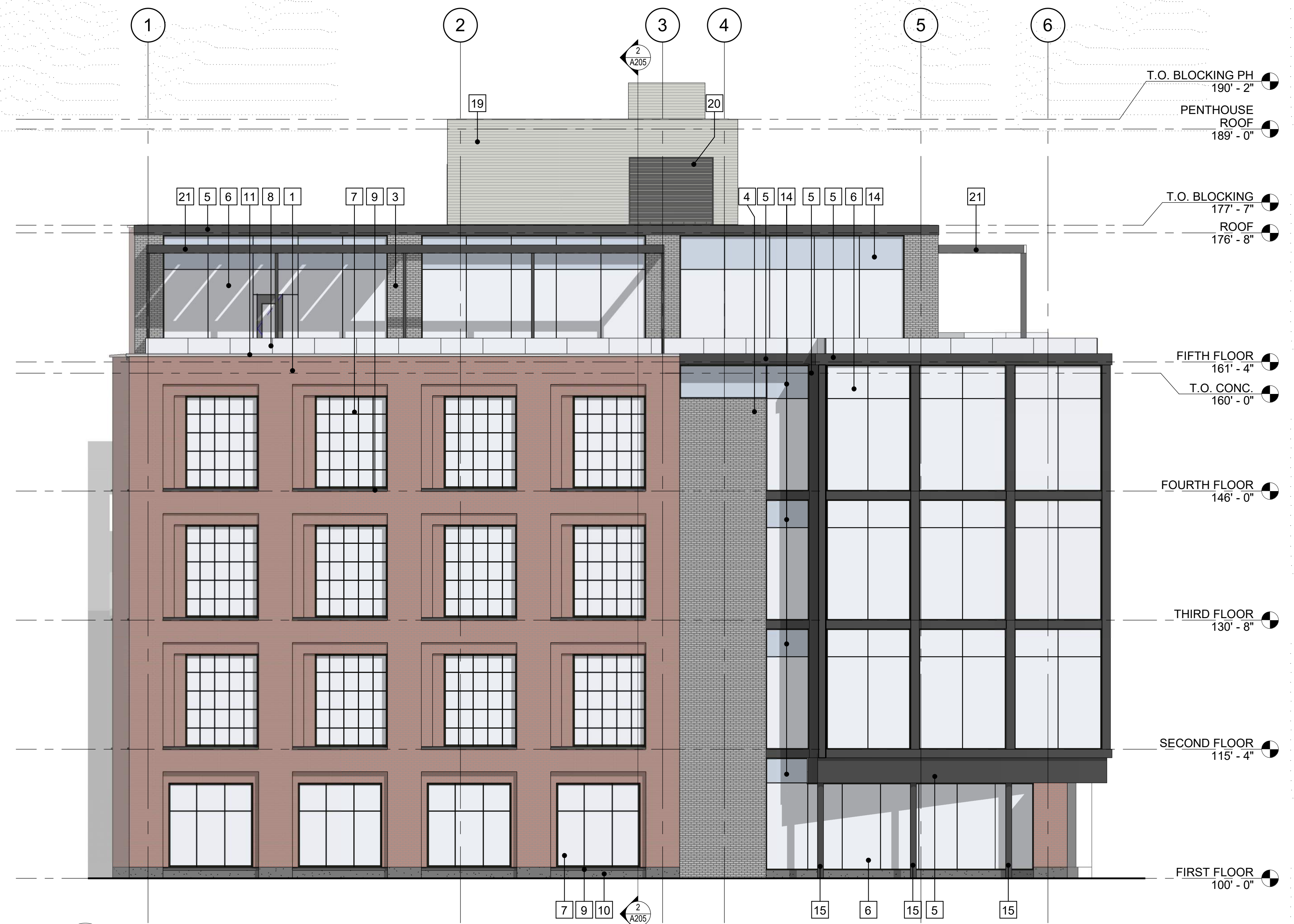
North West Elevation Perspective



South West Elevation Perspective

Materials





1 WEST ELEVATION
A203
1/8" = 1'-0"
0' 4' 8' 16'

- Notes:
- ELEVATION KEY NOTES
- 1 BRICK VENEER - BRICK 1
 - 2 BRICK VENEER - BRICK 1, BRICK VENEER WRAPS BOTH SIDES OF WALL
 - 3 BRICK VENEER - BRICK 2
 - 4 BRICK VENEER - BRICK 2 EVERY OTHER COURSE PROJECTS 1/2"
 - 5 BLACK ANODIZED ALUMINUM METAL PLATE WALL PANELS
 - 6 SSG ANODIZED ALUMINUM CURTAIN WALL SYSTEM
 - 7 ANODIZED ALUMINUM WINDOW, BASIS OF DESIGN - WAUSAU INVENT RETRO, COVE PROFILE W/ 3 PART SIMULATED DIVIDE (EXTERIOR, BETWEEN GLAZING, INTERIOR)
 - 8 GLASS GUARDRAIL
 - 9 CAST STONE SILL
 - 10 CAST STONE BASE COURSING
 - 11 CAST STONE COPING
 - 12 STONE VENEER PANELS
 - 13 METAL ACCENT, BLACK ANODIZED ALUMINUM
 - 14 SPANDREL GLAZING
 - 15 STEEL COLUMN - GALVANIZED PRIMED AND PAINTED
 - 16 STEEL COLUMN - FIREPROOFED AND WRAPPED W/ ANODIZED ALUMINUM METAL PLATE WALL PANELS
 - 17 STEEL COLUMNS W/ CROSS BRACING FOR BRIDGE SUPPORT, GALVANIZED, PRIMED AND PAINTED
 - 18 STEEL CROSS BRACING FOR WING WALL SUPPORT, GALVANIZED, PRIMED AND PAINTED
 - 19 METAL PANEL #2
 - 20 CONTINUOUS EXTRUDED ALUMINUM LOUVERS
 - 21 ADD ALTERNATE #1 - SHADING CANOPY
 - 22 METAL PANEL #1

PRELIMINARY
NOT FOR CONSTRUCTION

Archipelago Village - WHEDA
Office Building
Wisconsin Housing and Economic
Development Authority
908 E. Main St.
Madison, Wisconsin

2016.36.03

DATE: 03/11/2020
ISSUANCE/REVISIONS: LAND USE APPLICATION



2 NORTH ELEVATION
A203
1/8" = 1'-0"
0' 4' 8' 16'

**BUILDING
ELEVATIONS**

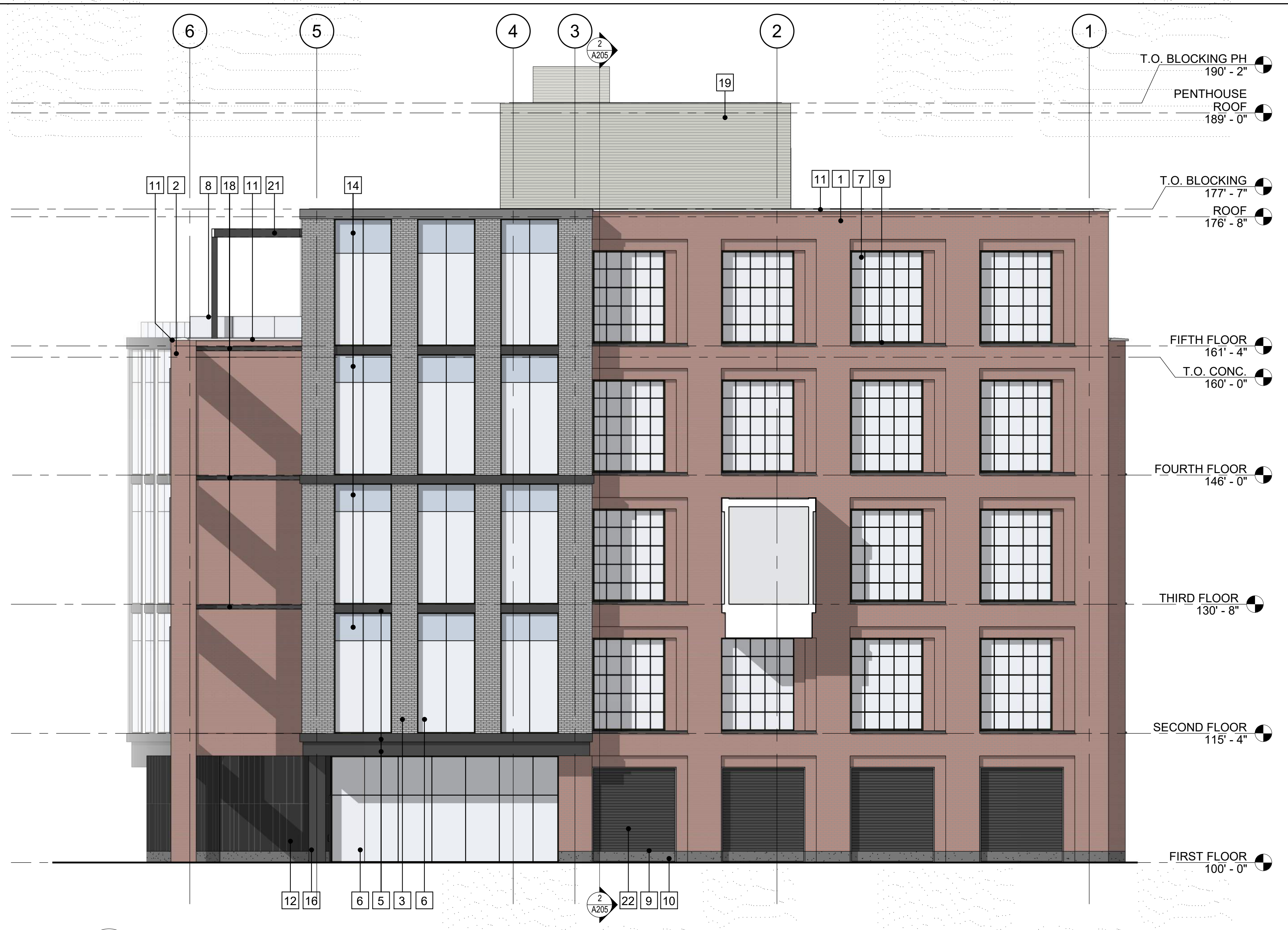
- Notes:
ELEVATION KEY NOTES
- 1 BRICK VENEER - BRICK 1
 - 2 BRICK VENEER - BRICK 1. BRICK VENEER WRAPS BOTH SIDES OF WALL
 - 3 BRICK VENEER - BRICK 2
 - 4 BRICK VENEER - BRICK 2. EVERY OTHER COURSE PROJECTS 1/2"
 - 5 BLACK ANODIZED ALUMINUM METAL PLATE WALL PANELS
 - 6 SSG ANODIZED ALUMINUM CURTAIN WALL SYSTEM
 - 7 ANODIZED ALUMINUM WINDOW, BASIS OF DESIGN - WAUSAU INVENT RETRO, COVE PROFILE W/ 3 PART SIMULATED DIVIDE (EXTERIOR, BETWEEN GLAZING, INTERIOR)
 - 8 GLASS GUARDRAIL
 - 9 CAST STONE SILL
 - 10 CAST STONE BASE COURSING
 - 11 CAST STONE COPING
 - 12 STONE VENEER PANELS
 - 13 METAL ACCENT, BLACK ANODIZED ALUMINUM
 - 14 SPANDREL GLAZING
 - 15 STEEL COLUMN - GALVANIZED PRIMED AND PAINTED
 - 16 STEEL COLUMN - FIREPROOFED AND WRAPPED W/ ANODIZED ALUMINUM METAL PLATE WALL PANELS
 - 17 STEEL COLUMNS W/ CROSS BRACING FOR BRIDGE SUPPORT, GALVANIZED, PRIMED AND PAINTED
 - 18 STEEL CROSS BRACING FOR WING WALL SUPPORT, GALVANIZED, PRIMED AND PAINTED
 - 19 METAL PANEL #2
 - 20 CONTINUOUS EXTRUDED ALUMINUM LOUVERS
 - 21 ADD ALTERNATE #1 - SHADING CANOPY
 - 22 METAL PANEL #1

PRELIMINARY
NOT FOR CONSTRUCTION

Archipelago Village - WHEDA
Office Building
Wisconsin Housing and Economic
Development Authority
908 E. Main St.
Madison, Wisconsin

2016.36.03

DATE	ISSUANCE/REVISIONS	LAND USE APPLICATION
03/11/2020		



1 EAST ELEVATION
A204
1/8" = 1'-0"



2 SOUTH ELEVATION
A204
1/8" = 1'-0"

**BUILDING
ELEVATIONS**



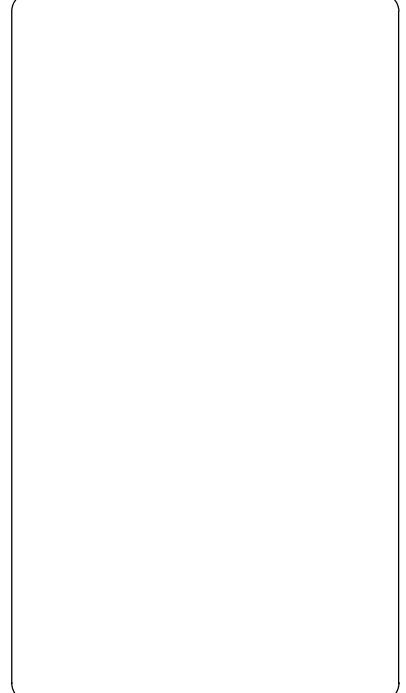
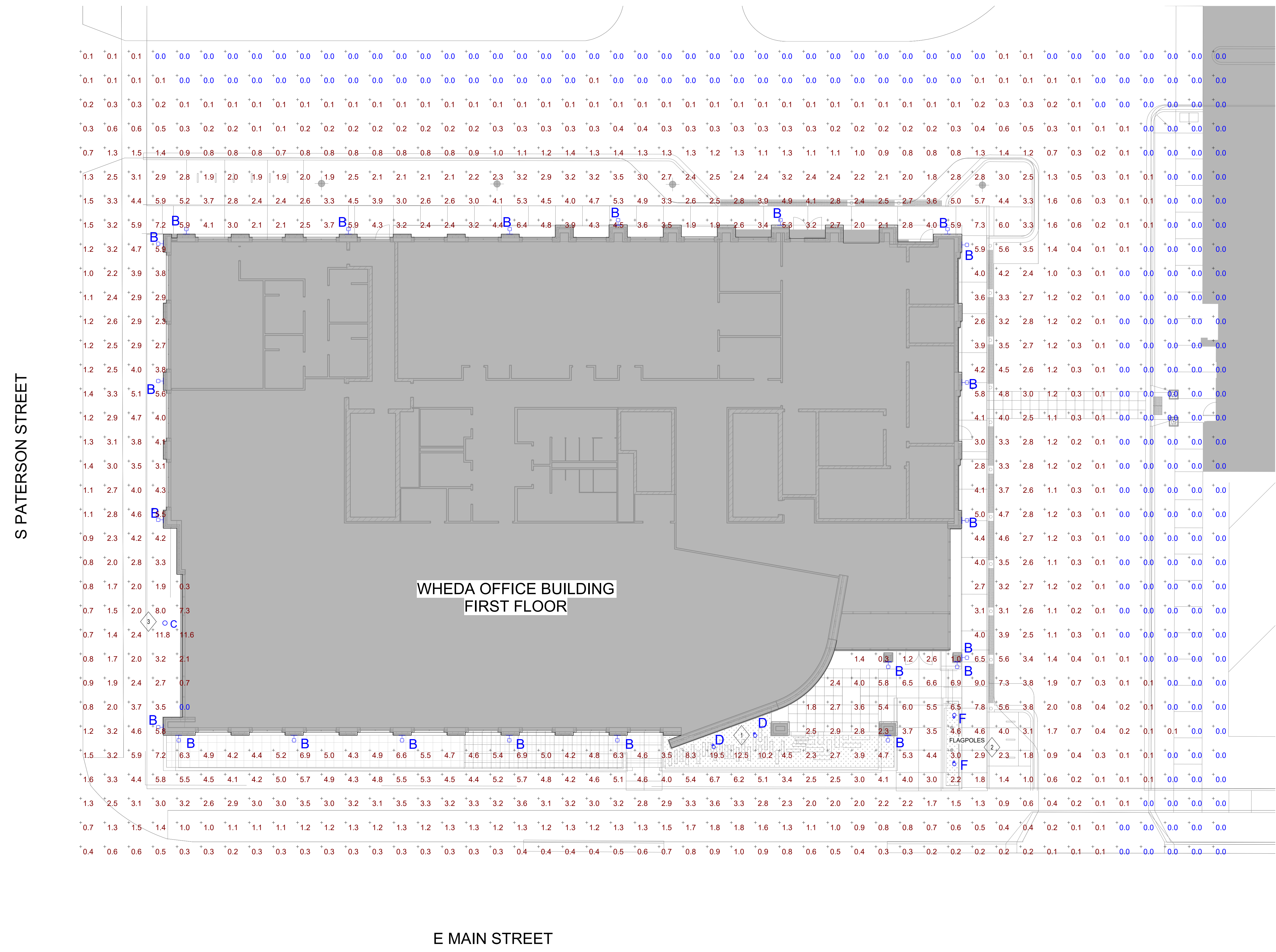
WHEDA

SITE LIGHTING FIXTURE SCHEDULE

TYPE	DESCRIPTION	MANUFACTURER	CATALOG NUMBER	MOUNTING	VOLTAGE	WATTS	LAMP TYPE	REMARKS
B	WALL FIXTURE	ARCHITECTURAL ARE LIGHTING	CY125-4K71-3-R	WALL @ 5'-0"	277 V	26	LED	
C	RECESSED ROUND SOFFIT DOWNLIGHT	GOHAM ARCHITECTURAL LIGHTING	EV068H 40/10 DFF SMO MVOLT	CEILING	277 V	12	LED	CLEAR SPECULAR LENS
D	AREA FLOOD LIGHT	LITHONIA LIGHTING	DFL2 LED P2 40K MVOLT	GROUND	277 V	114	LED	
F	FLAGPOLE FLOOD LIGHT	LITHONIA LIGHTING	DFL2 LED P3 40K MVOLT	GROUND	277 V	114	LED	

GENERAL NOTES:
 1. *8" FIXTURES MOUNTED AT 0'-0" ABOVE FINISHED FLOOR.

PLAN NOTES:
 1. GROUND MOUNTED FLOOD LIGHTING FOR MONUMENT SIGN.
 2. GROUND MOUNTED FLOOD LIGHTING FOR FLAG POLE.
 3. RECESSED DOWNLIGHT MOUNTED IN SOFFIT.



WHEDA
 901 E Main St
 Madison, Wisconsin

Rev.	Description	Date

THIS DRAWING IS THE EXCLUSIVE PROPERTY OF WESTPHAL & COMPANY INC. THE REPRODUCTION OF ANY PART WITHOUT PRIOR WRITTEN CONSENT FROM WESTPHAL & COMPANY INC. IS PROHIBITED.

Drawn/Designed By: Job No. WESTPHAL & COMPANY INC. 2040010
 Scale: 1" = 10'-0" Cost Code:
 Date: 03/09/20
 SITE LIGHTING SUBMITTAL

2 WHEDA SITE LIGHTING PHOTOMETRIC PLAN
 ES-1
 1" = 10'-0"

SITE LIGHTING FIXTURE SCHEDULE								
TYPE	DESCRIPTION	MANUFACTURER	CATALOG NUMBER	MOUNTING	VOLTAGE	WATTS	LAMP TYPE	REMARKS
B	WALL FIXTURE	ARCHITECTURAL ARE LIGHTING	CY11-25-4K7-I-S-R	WALL @ 9'-0"	277 V	38	LED	
C	RECESSED ROUND SOFFIT DOWNLIGHT	GOTHAM ARCHITECTURAL LIGHTING	EV08SH 40/10 DFF SMO MVOLT	CEILING	277 V	12	LED	CLEAR SPECULAR LENS
D	AREA FLOOD LIGHT	LITHONIA LIGHTING	OFL2 LED P2 40K MVOLT	GROUND	277 V	114	LED	
F	FLAGPOLE FLOOD LIGHT	LITHONIA LIGHTING	OFL2 LED P3 40K MVOLT	GROUND	277 V	114	LED	

GENERAL NOTES:
 1. "B" FIXTURES MOUNTED AT 9'-0" ABOVE FINISHED FLOOR.



1 WHEDA FIFTH FLOOR PATIO LIGHTING PHOTOMETRIC PLAN
 ES-2 1" = 10'-0"



WHEDA
 901 E Main St
 Madison, Wisconsin

Rev.	Description	Date

THIS DRAWING IS THE EXCLUSIVE PROPERTY OF WESTPHAL & COMPANY, INC. THE REPRODUCTION OF ANY PART WITHOUT PRIOR WRITTEN CONSENT FROM WESTPHAL & COMPANY, INC. IS PROHIBITED.

Drawn/Designed By: Job No. WESTPHAL & COMPANY, INC. 2040010
 Scale: 1" = 10'-0" Cont. Code:
 Date: 03/10/20
 SITE LIGHTING SUBMITTAL

Sheet: ES-2

3/10/2020 4:03:53 PM
 C:\Users\lawelk\Documents\2040010_WHEDA_2019_aveilKFRJU.rvt

FEATURES

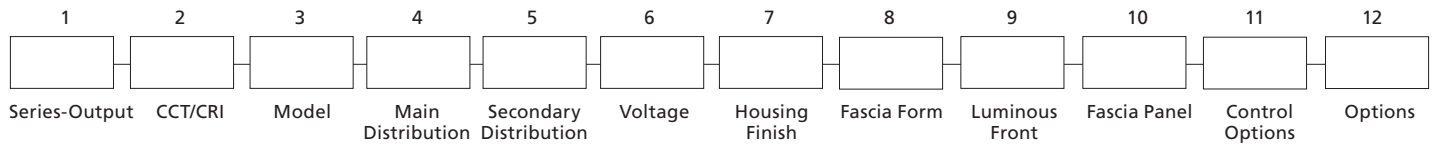
- Integral Battery Backup Option
- 360° Light Distribution
- RGBW or Static White Luminous Front Option
- IES Type I, II, III & IV Distributions
- Wall Graze, Spot and Pencil Distributions
- Multiple Fascia Options and Finishes
- 0-10V dimming
- IP-66 Housing & Optical System
- 120-277V
- 3000K, 4000K & 5000K CCT
- 10kA Surge Protection
- Fascia Forms F, E and T are ADA compliant for use in low mounting height applications (80 inches or less)
- IDA approved, downlight only, 3000K and warmer CCTs



Downlight only, 3000K and warmer CCTs



ORDERING CODE



SERIES-OUTPUT (Base)

CY1-15	15w, 1500 nominal lumens
CY1-25	25w, 2500 nominal lumens

CCT-CRI

27K8	2700K, 80CRI
3K7	3000K, 70CRI
3K8	3000K, 80CRI
4K7	4000K, 70CRI
4K8	4000K, 80CRI
5K7	5000K, 70CRI

MODEL (Light Engine)

1	DownLight Only
2	50/50 Down/Up, Down/Up distributions must match
3	90/10 Down/Up
4	25/25/25/25 Split, Down/Up/Side distributions must match
5	70/10/10/10 Split, Top/Side distributions must match

Contact factory for custom distributions, See Distribution Matrix on page 2 for restrictions.

MAIN DISTRIBUTION (Down)

1	IES Type I
2	IES Type II
3	IES Type III
4	IES Type IV
SP	15° Spot/Column
WG	60° Wall Graze
1D	Type 1 Diffused
2D	Type 2 Diffused
3D	Type 3 Diffused
4D	Type 4 Diffused

SECONDARY DISTRIBUTION (Up, Sides)

1	IES Type I
2	IES Type II
3	IES Type III
4	IES Type IV
SP	15° Spot/Column
WG	60° Wall Graze
PB*	Pencil Beam
1D	Type 1 Diffused
2D	Type 2 Diffused
3D	Type 3 Diffused
4D	Type 4 Diffused

* PB distribution is available for 90/10 and 70/10/10/10 models only. Not all combinations are recommended. See Distribution Matrix on page 2 for restrictions.

VOLTAGE

UNV	120-277V
------------	-----------------

BASE HOUSING FINISH

Standard Colors

AGN	Antique Green
BL	Black
BLT	Matte Black
CRT	Corten
DB	Dark Bronze
DGN	Dark Green
GT	Graphite
LG	Light Grey
MAL	Matte Aluminum
MDB	Metallic Bronze
MG	Medium Grey
TT	Titanium
VBU	Verde Blue
WDB	Weathered Bronze
WH	Arctic White

Premium Colors

SFM	Seafoam
SHK	Shamrock
SPP	Salt and Pepper
WCP	Weathered Copper
RAL	Provide a RAL 4 digit color number
CUSTOM COLOR	Please provide color chip for matching

FASCIA FORM

F	Flat
R	Radius/Curved
T	Triangle/Wedge
E	Rounded Edge
C	Circle/Curved
CB	Cylinder Balanced
CT	Cylinder Tall
CBM	Custom Building Material Mount Ghost Fascia

LUMINOUS FRONT

BLANK	Standard None
RGBW	RGBW Luminous Front
LFSW	Static White Luminous Front

RGBW and LFSW luminous fronts are only available with open, four square and perforated fascia panels

FASCIA PANEL

FPP	Full Panel Painted
FPS	Full Panel Stainless Steel
FPC	Full Panel Copper
OPP	Open Panel Painted
OPS	Open Panel Stainless Steel
OPC	Open Panel Copper
4PP	4-Square Panel Painted
4PS	4-Square Panel Stainless Steel
4PC	4-Square Panel Copper
PPP	Perforated Panel Painted
PPS	Perforated Panel Stainless Steel
PPC	Perforated Panel Copper

Flat and Radius Fascia forms only. Painted panels by default match base housing finish/color. Consult factory for custom panel finishes.

CONTROL OPTIONS

PCU	Universal Button Photocell (120-277V)
-----	---------------------------------------

OPTIONS

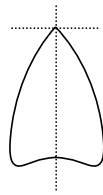
EM	Battery Backup Unit -20°C
SF	Single Fuse (120, 277)
DF	Double Fuse (208, 240)

Battery Backup not available with Triangle and Rounded Edge Fascia Forms.



ARCHITECTURAL AREA LIGHTING
17760 Rowland Street | City of Industry | CA 91748
P 626.968.5666 | F 626.369.2695 | www.aal.net
Copyright © 2017 | September 7, 2018 11:56 AM

JOB	_____
TYPE	_____
NOTES	_____



OVERVIEW

General Illumination Shower Downlight

6"

Feature Set

- Wipe down flush or regressed lens
- NSF2 Splash/Non-food Zone
- Fully serviceable and upgradeable lensed LED light engine
- 70% lumen maintenance at 60,000 hours
- 2.5 SDCM; 85 CRI typical, 90+ CRI optional
- IP66 rated room-side, Fixtures are wet location, covered ceiling
- Anti-microbial paint finish, optional
- Non-conductive dead-front trim
- Suitable for steam room application

Distribution



Superior Performance (Flush, Clear Lens)

Nominal Lumens	250	500	750	1000	1500	2000	2500	3000	3500	4000
Delivered	219	437	656	857	1274	1729	2187	2624	3062	3499
Wattage	3.4	6.2	8.2	9.6	14.7	19.7	24.7	29.5	33.8	39.0
Efficacy	64.4	70.5	80.0	89.3	86.7	87.8	88.5	88.9	90.6	89.7

*Lumen output for 80CRI - 3500K

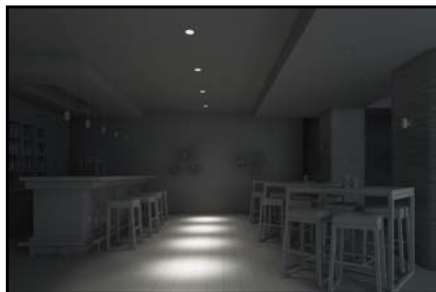


COMPLEMENTARY PRODUCTS

Coordinated Apertures | Multiple Layers of Light



General Illumination Layer | EVO



High Center Beam Layer | Incito



EVO + Incito — Multiple Layers of Light

Downlight Open Wallwash Lensed Wallwash Cylinder	Downlight Adjustable Lensed Wallwash Cylinder	Core
MRI Surgical Suite Patient Room	Healthcare	
Dynamic Food Service Vandal Clean Room Shower	Special Applications	



OFL Size 2 LED Flood Luminaire



Catalog
Number

Notes

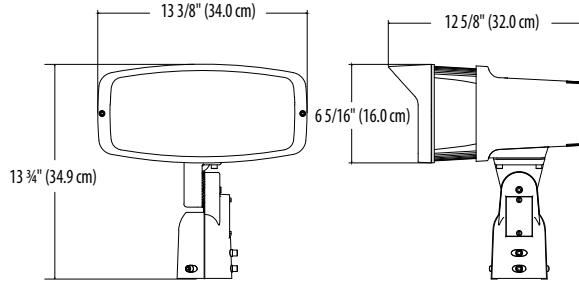
Type

D & F

Hit the Tab key or mouse over the page to see all interactive elements.

Specifications

EPA:	0.7 ft ² (.06 m ²)
Depth:	12.6" (32 cm)
Width:	13.37" (34 cm)
Height:	13.75" (35 cm)
Weight:	18 lbs (8.1 kg)



Introduction

The OFL Size 2 Floodlight delivers up to 16,900 lumens, with a robust design and several mounting options making it perfect for light commercial applications. It's the ideal long-life replacement for 250-400W metal halide floods, with typical energy savings up to 62% and expected service life of over 50,000 hours.

Ordering Information

EXAMPLE: OFL2 LED P2 40K MVOLT IS DDBXD

Series	Performance Package	Color Temperature	Voltage	Mounting	Finish (required)
OFL2 LED	P2 P3 ¹ F	40K 50K ¹ 4000K 5000K	MVOLT ² 347	IS YK ¹ Slipfitter Yoke	DDBXD Dark bronze

Accessories

Ordered and shipped separately.

DSXF1/2TS DDBXD U	Slipfitter for 1-1/4" to 2-3/8" OD tenons; mates with 1/2" threaded knuckle (specify finish)
FTS CG6 DDBXD U	Slipfitter for 2-3/8" to 2-7/8" OD tenons; mates with yoke mount (specify finish)

NOTES

- P3 50K not available with YK.
- MVOLT driver operates on any line voltage from 120-277V (50/60Hz).

FEATURES & SPECIFICATIONS

INTENDED USE

The traditional and robust design of the OFL2 LED floodlight with energy efficient LEDs, is suitable for replacing up to 400W Metal Halide. It is ideal for landscape, signage, and accent lighting in heavy commercial and residential applications.

CONSTRUCTION

Die-cast aluminum housing has integral heat sink fins to optimize thermal management through conductive and convective cooling. The LED driver is mounted in direct contact with the casting to promote low operating temperature and long life. Housing is completely sealed against moisture and environmental contaminants (IP65). Low EPA (0.7 ft²) for optimized wind loading.

FINISH

Exterior parts are protected by a zinc-infused Super Durable TGIC thermoset powder coat finish that provides superior resistance to corrosion and weathering.

ELECTRICAL

Light engine(s) consist of chip-on-board (COB) LEDs directly coupled to the housing to maximize heat dissipation and promote long life (50,000 hrs).

INSTALLATION

Integral slipfitter or yoke facilitates quick and easy installation to a variety of mounting accessories.

LISTINGS

UL certified to U.S. and Canadian standards. Luminaire is IP65 rated. Rated for -40°C minimum ambient.

DesignLights Consortium® (DLC) qualified product. Not all versions of this product may be DLC qualified. Please check the DLC Qualified Products List at www.designlights.org/QPL to confirm which versions are qualified.

WARRANTY

5-year limited warranty. Complete warranty terms located at: www.acuitybrands.com/CustomerResources/Terms_and_conditions.aspx.

Note: Actual performance may differ as a result of end-user environment and application. All values are design or typical values, measured under laboratory conditions at 25 °C. Specifications subject to change without notice.



COMMERCIAL OUTDOOR

One Lithonia Way • Conyers, Georgia 30012 • Phone: 1-800-705-SERV (7378) • www.lithonia.com
© 2012-2019 Acuity Brands Lighting, Inc. All rights reserved.

OFL2 LED
Rev. 12/20/19