

2B Compliant

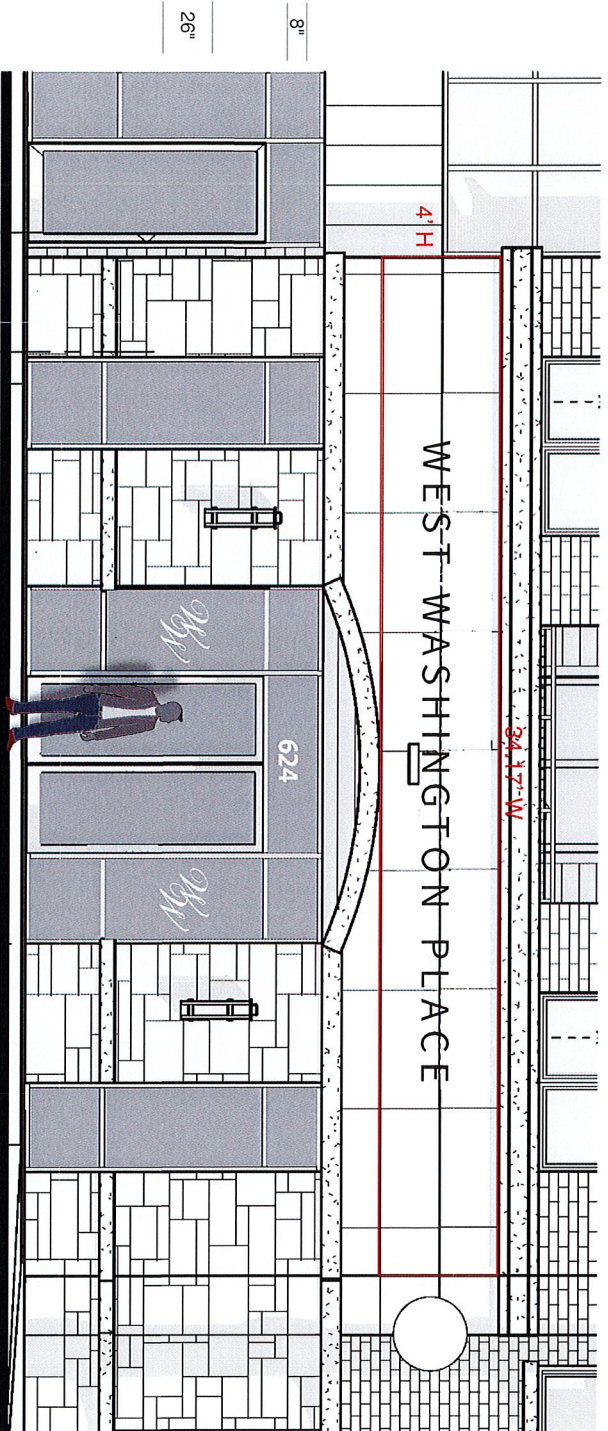
West Elevation Entry

1/4" = 1'.0"

4' H x 34.17 W = 136.68 Sq Ft Signable Area

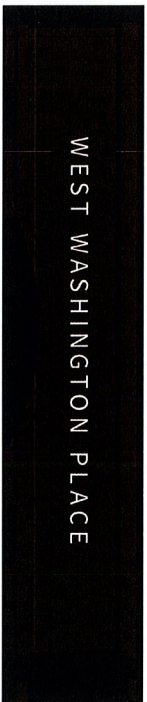
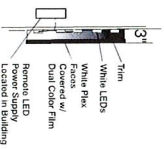
136.68 x .30 = 41 Allowable Sq Ft

Sign - 20.64 Total Sq Ft



3/8" = 1'.0"

.96 H x 21.5' W = 20.64 Total Sq Ft



Dual Color Film

Wind Load Statement: Sign will comply with the minimum requirements of the International Building Code (IBC) and will withstand up to 75 mph winds.

Material: Internal White LED Illumination, Lenses Covered w/ Dual Color Film.

Construction: Aluminum Composite Signage, Internal White LED Illumination, Lenses Covered w/ Dual Color Film.

Manufacturer: Ryan Signs, Inc.

Client: WEST WASHINGTON PLACE-622 W WASHINGTON AVE	Scale: VARIABLE
Project: WEST WASHINGTON PLACE-622 W WASHINGTON AVE	Issue: 12/2/20
Address: WEST WASHINGTON PLACE-622 W WASHINGTON AVE	City: Madison, WI
Phone: 608.271.3226	Project No: 6953
Website: www.ryansigns.com	Year: 2018

Print to Scale on 11" x 17"

Exception Requested
West Washington Place
622 and 624 West Washington Avenue
January 6, 2021
Page 2

SOUTH ELEVATION

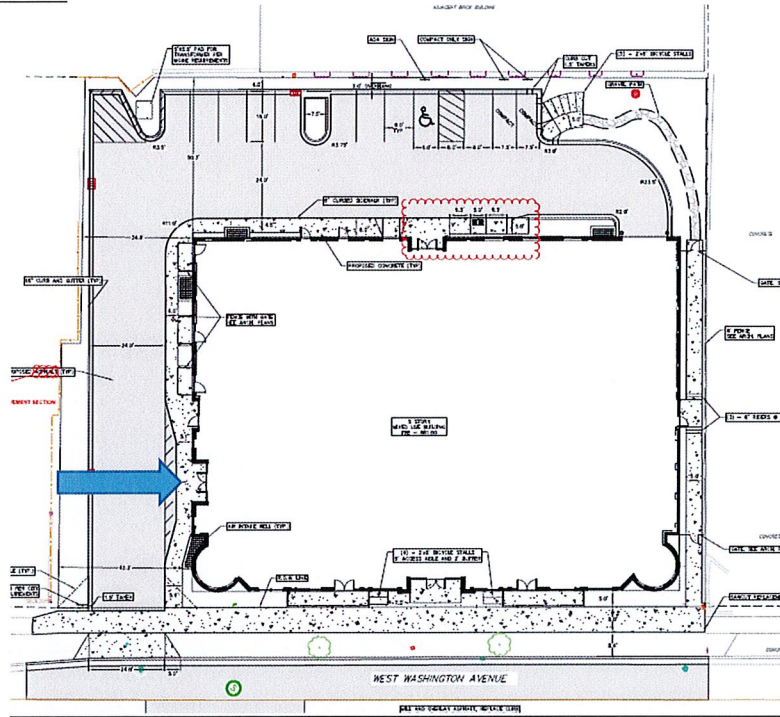


WEST ELEVATION



Exception Requested
West Washington Place
622 and 624 West Washington Avenue
January 6, 2021
Page 3

PROPOSED SIGN LOCATION



PERSPECTIVE DRAWING OF ENTRANCE (sign design has been updated)



West Washington Place - Madison, WI



4A.8

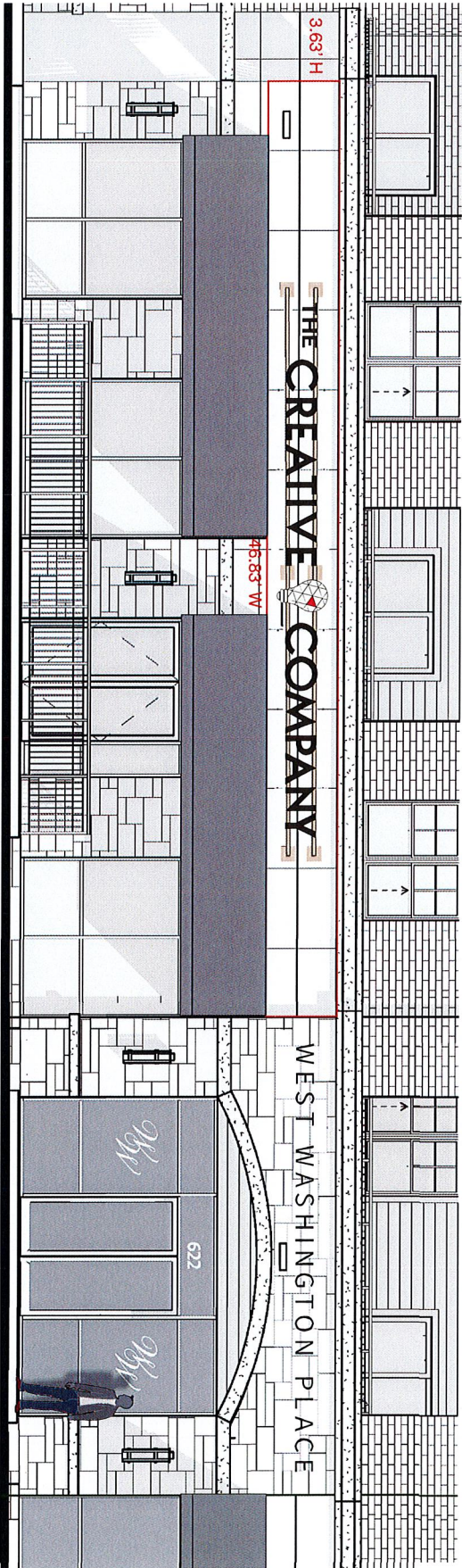
Compliant

South Elevation Entry & West Tenant

3/16" = 1'.0"

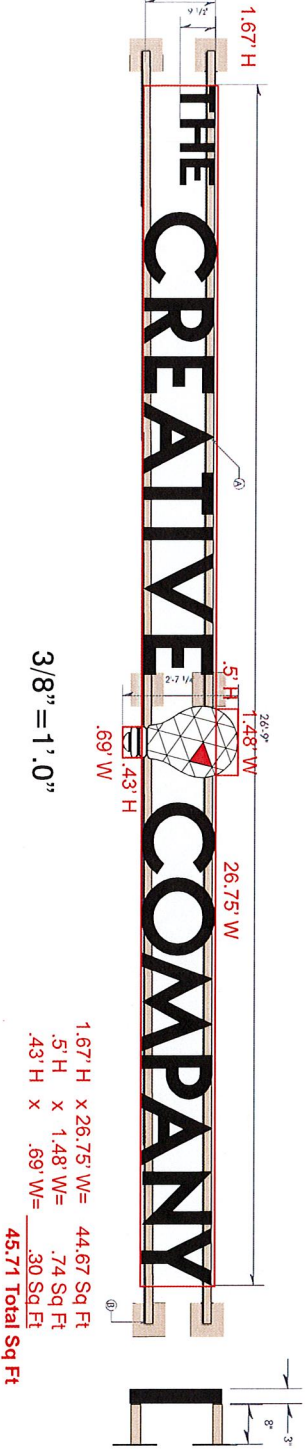
68.90 Sq Ft Maximum Per Tenant Area - 40% Area Above Awning
NTE 80 Sq Ft Total

Sign - 45.71 Total Sq Ft



Night View

THE CREATIVE COMPANY



3/8" = 1'.0"

1.67' H	x	26.75' W	=	44.67 Sq Ft
.5' H	x	1.48' W	=	.74 Sq Ft
.43' H	x	.69' W	=	.30 Sq Ft
				45.71 Total Sq Ft

Color Legend

- 3M Topper Red (Reddon)
- 3M Black Dry Night Pearl Stock (The Creative company)
- 3M Black (Reddon)
- Black (from Cap & Returns)
- To Match building color (Wine Way)

Material Legend

3M Topper Red (Reddon) - 3M Black Dry Night Pearl Stock (The Creative company) - 3M Black (Reddon) - Black (from Cap & Returns) - To Match building color (Wine Way)

Print to Scale on 11" x 17"

6953

4B Compliant

South Elevation Entry & East Tenant

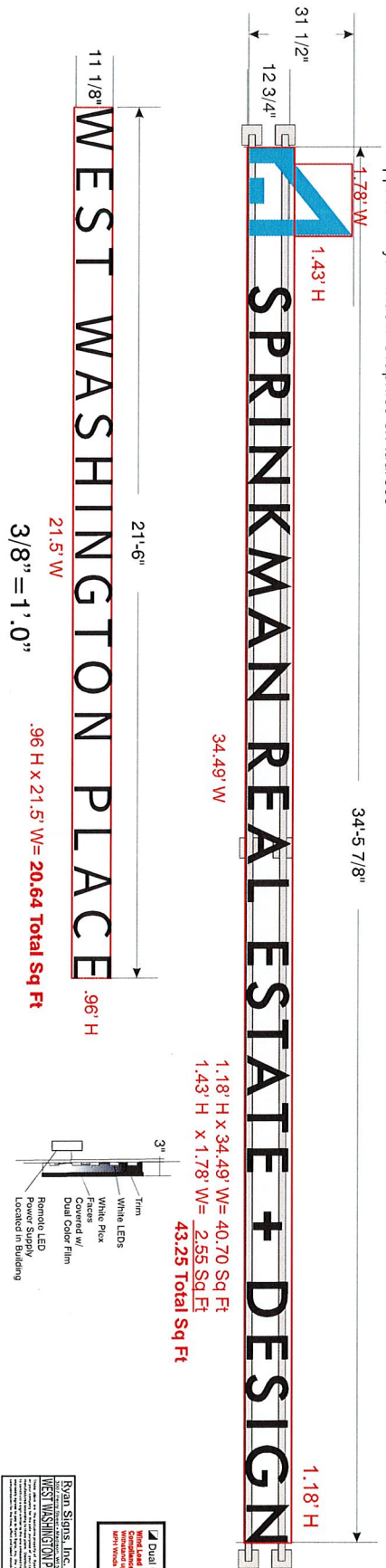
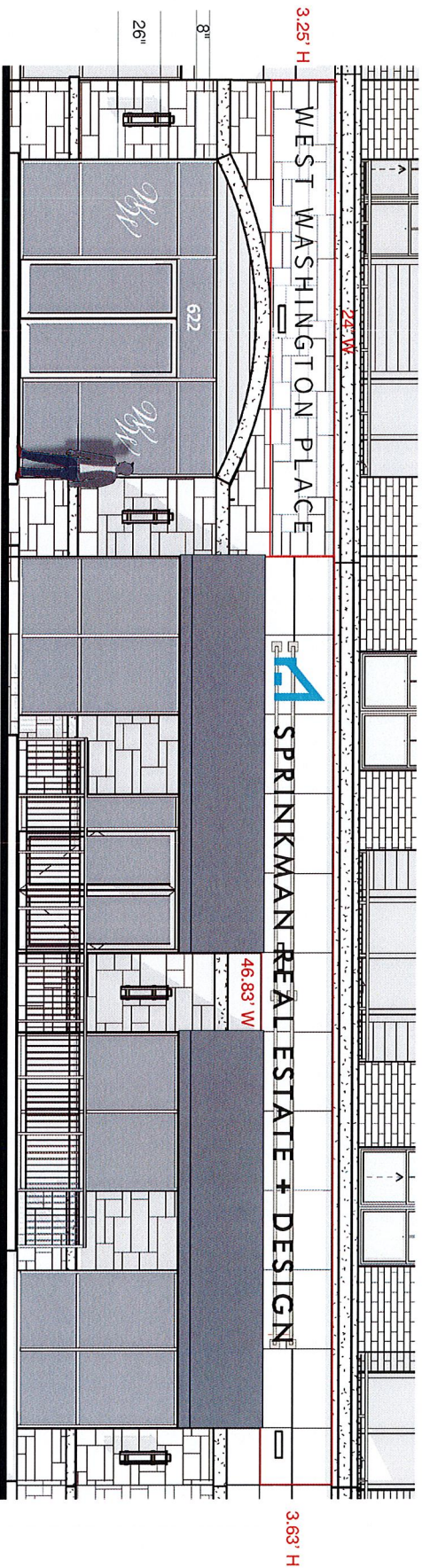
3/16" = 1'.0"

WEST WASHINGTON PLACE

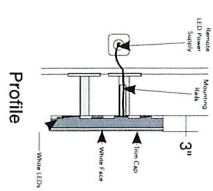
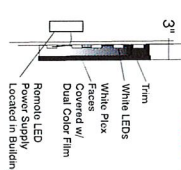
SPRINKMAN REAL ESTATE + DESIGN

3.25 H x 24 W = 78 Sq Ft Signable Area
 78 x .30 = 23.40 Allowable Sq Ft
Sign - 20.64 Total Sq Ft

68.90 Sq Ft Maximum Per Tenant Area - 40% Area Above Awning
 NTE 80 Sq Ft Total 46.59 Sq Ft Shown
Sign - 43.25 Total Sq Ft



1.18' H x 34.49' W = 40.70 Sq Ft
 1.43' H x 1.78' W = 2.55 Sq Ft
43.25 Total Sq Ft



<input checked="" type="checkbox"/> Dual Color Film	<input type="checkbox"/> Translucent Color Film TBD
Material: Aluminum Extrusion	Construction: Aluminum Extrusion
Finish: White Plex	Color: White
Lighting: Remote LED Power Supply	Power: 120V AC
Mounting: Flush Mount	Dimensions: 1.18' H x 1.78' W
Weight: 2.55 Sq Ft	Model: 6953
Manufacturer: Ryan Signs, Inc.	Part Number: 6953