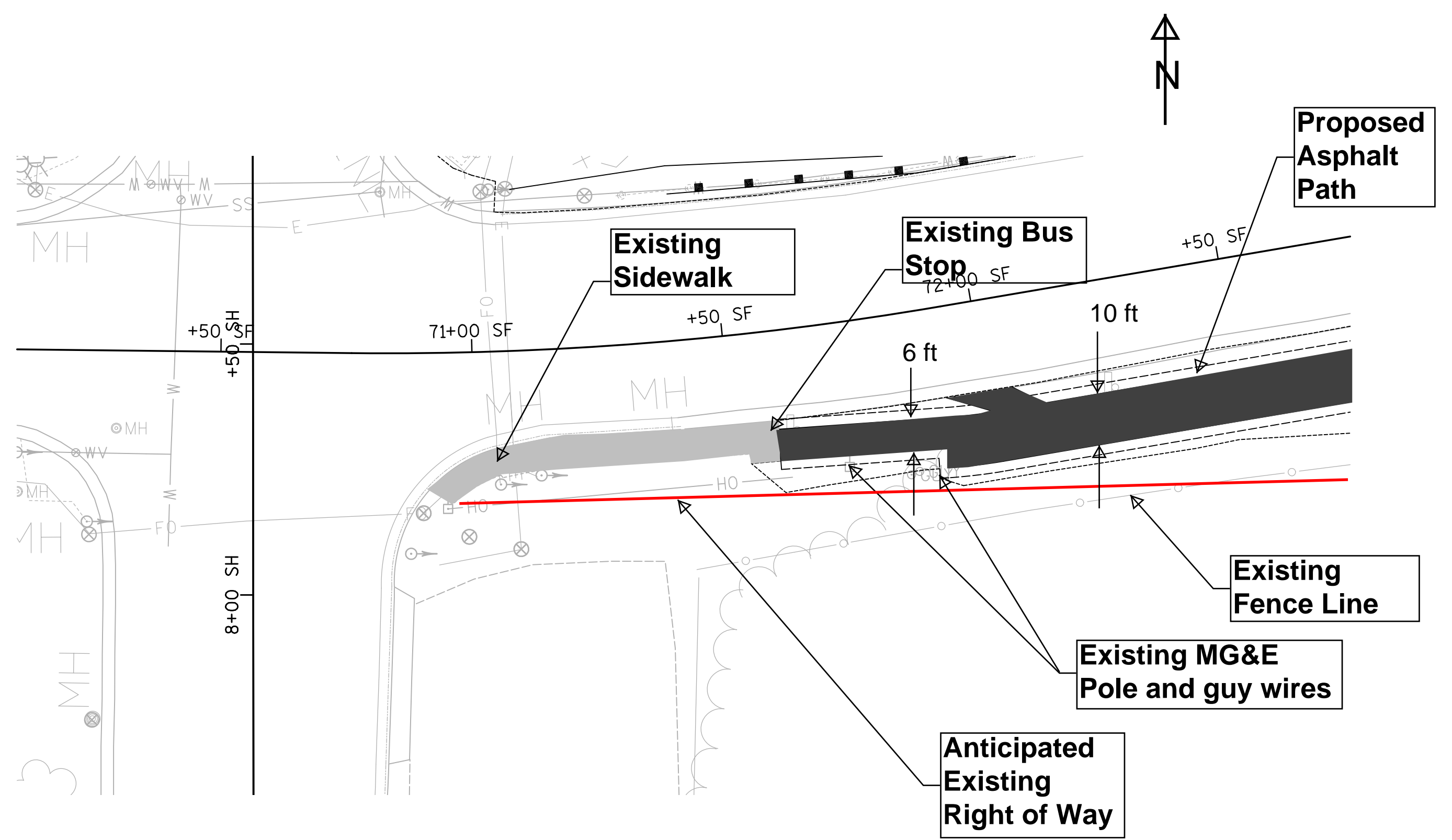


SEMINOLE HIGHWAY EASTBOUND ENTRANCE RAMP/FRONTAGE ROAD - POTENTIAL PATH



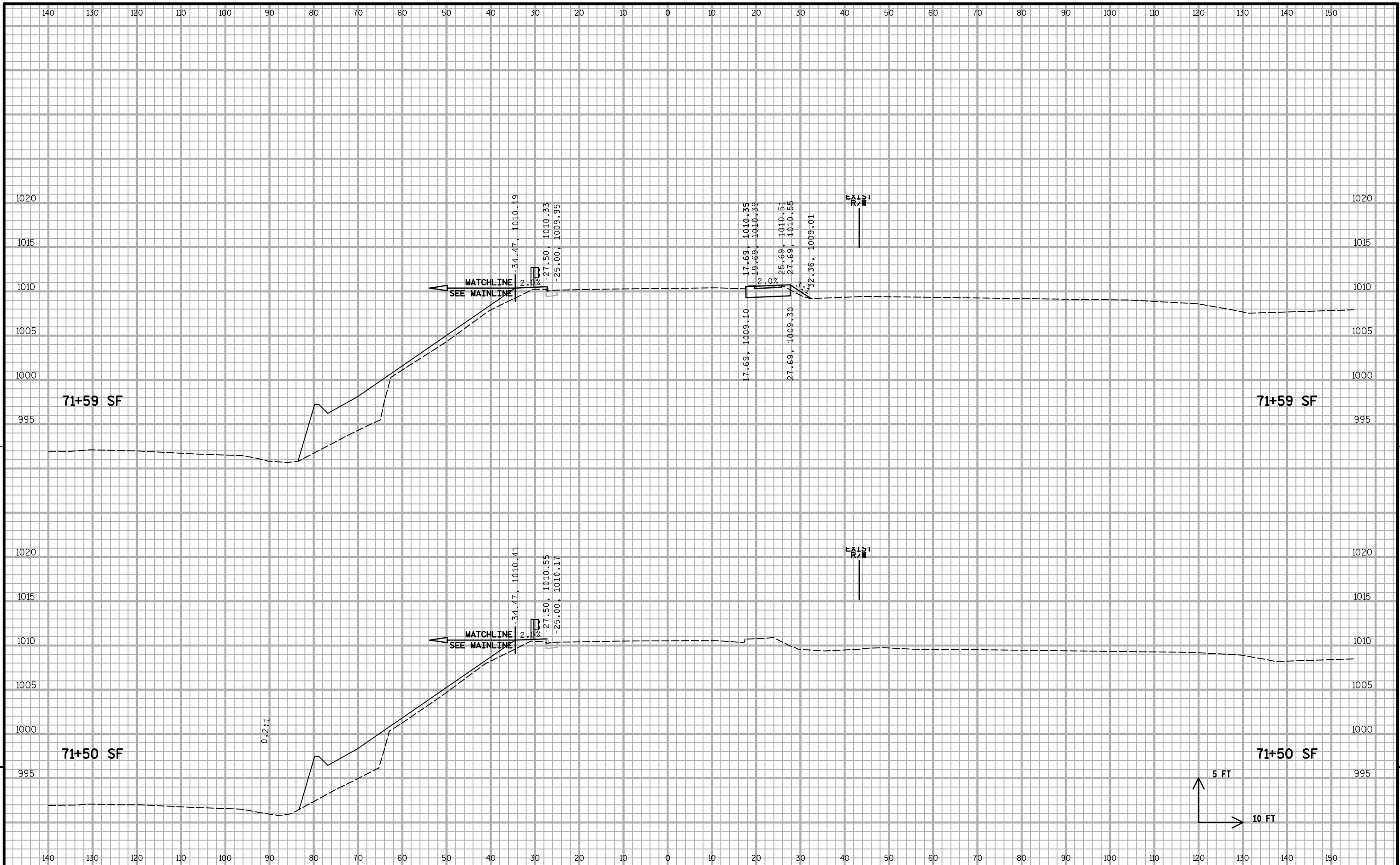
**FOR
PRELIMINARY
USE ONLY
NOVEMBER 2012**

FOR PRELIMINARY USE ONLY



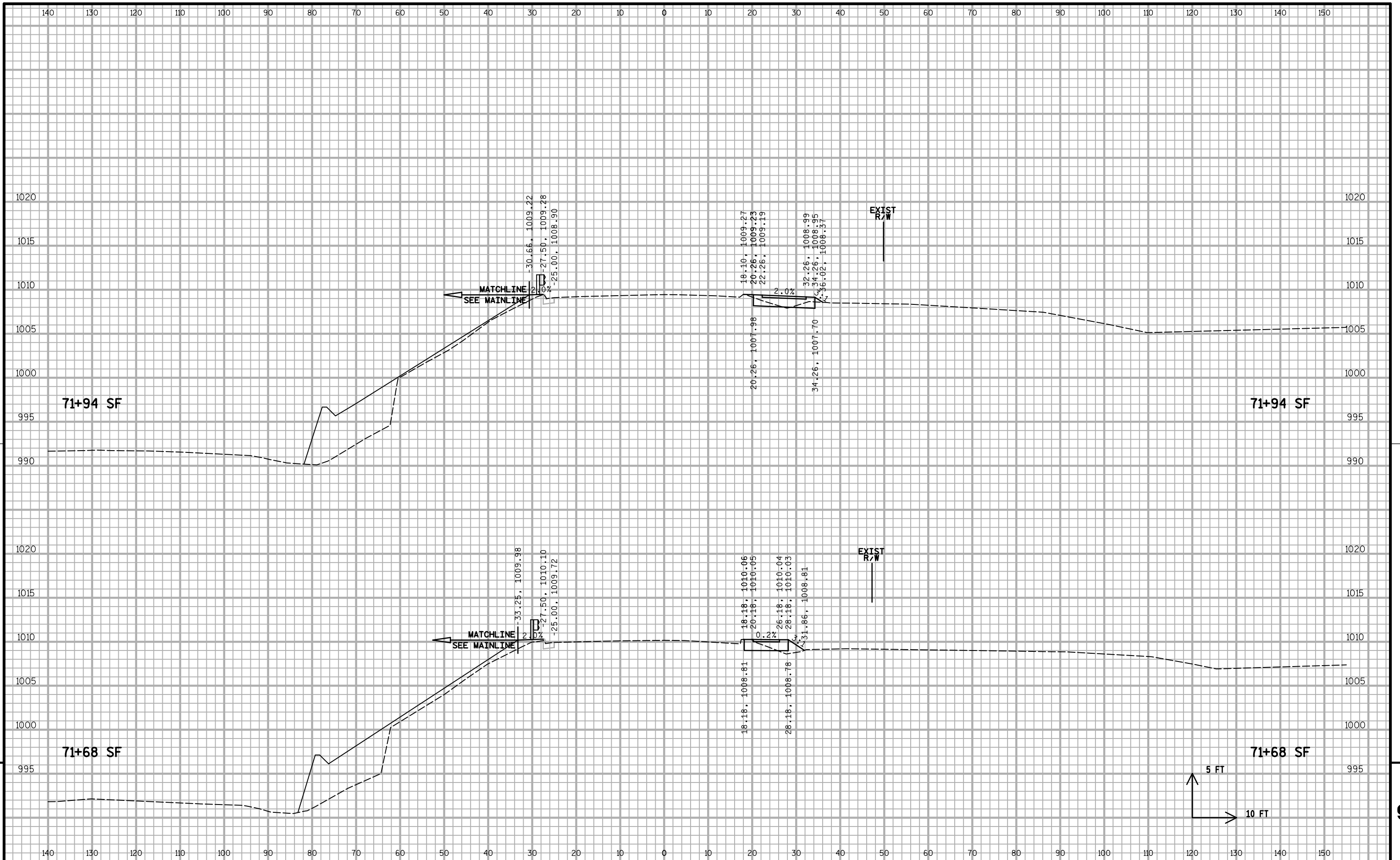
PROJECT NO: 1206-07-77 HWY: USH 18 COUNTY: DANE CROSS SECTIONS - SEMINOLE FRONTAGE ROAD (SF LINE) SHEET E

FOR PRELIMINARY USE ONLY



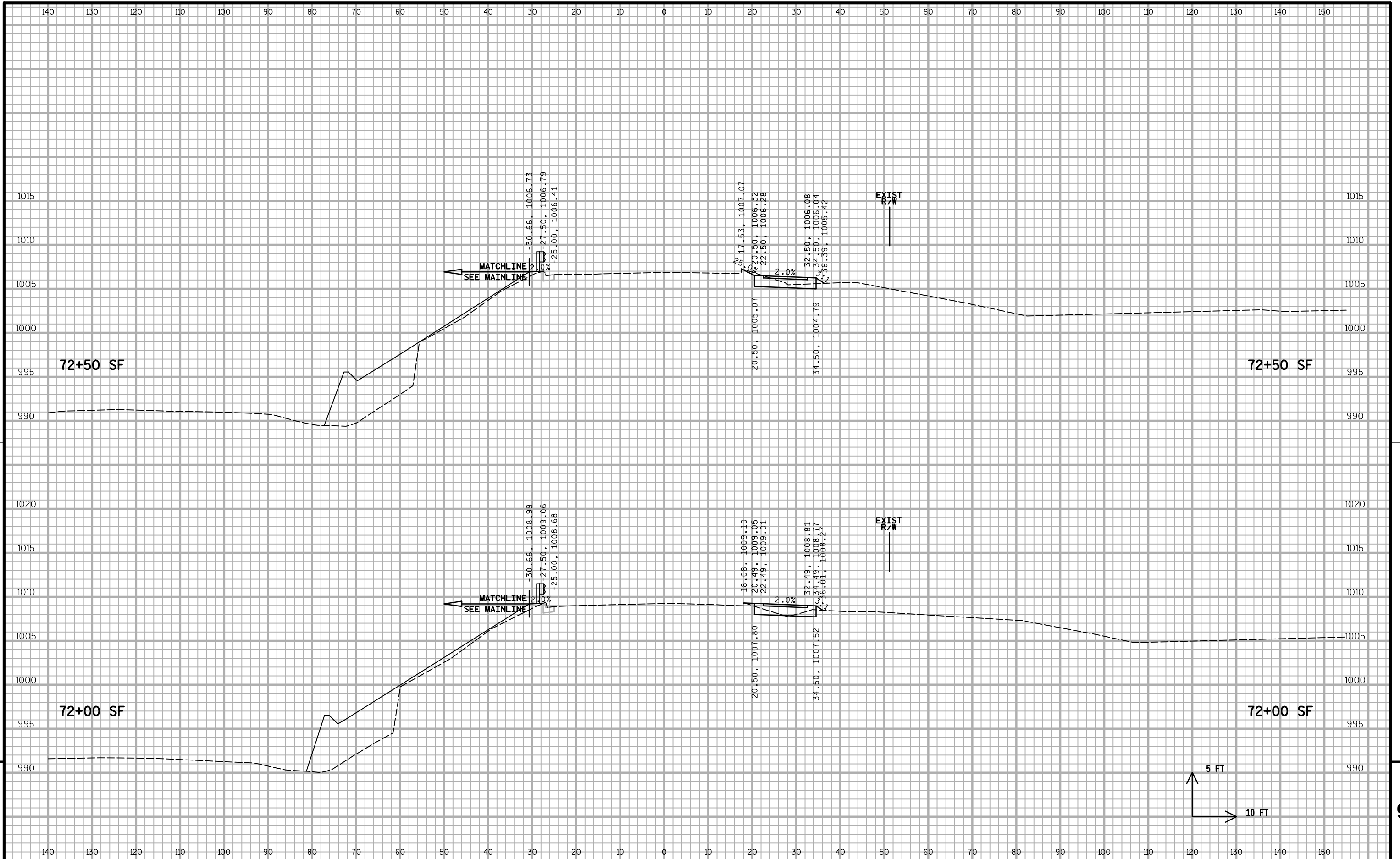
PROJECT NO: 1206-07-77	HWY: USH 18	COUNTY: DANE	CROSS SECTIONS - SEMINOLE FRONTAGE ROAD (SF LINE)	SHEET	9
------------------------	-------------	--------------	---	-------	----------

FOR PRELIMINARY USE ONLY



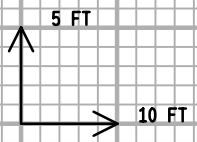
PROJECT NO: 1206-07-77
HWY: USH 18
COUNTY: DANE
CROSS SECTIONS - SEMINOLE FRONTAGE ROAD (SF LINE)
SHEET

FOR PRELIMINARY USE ONLY

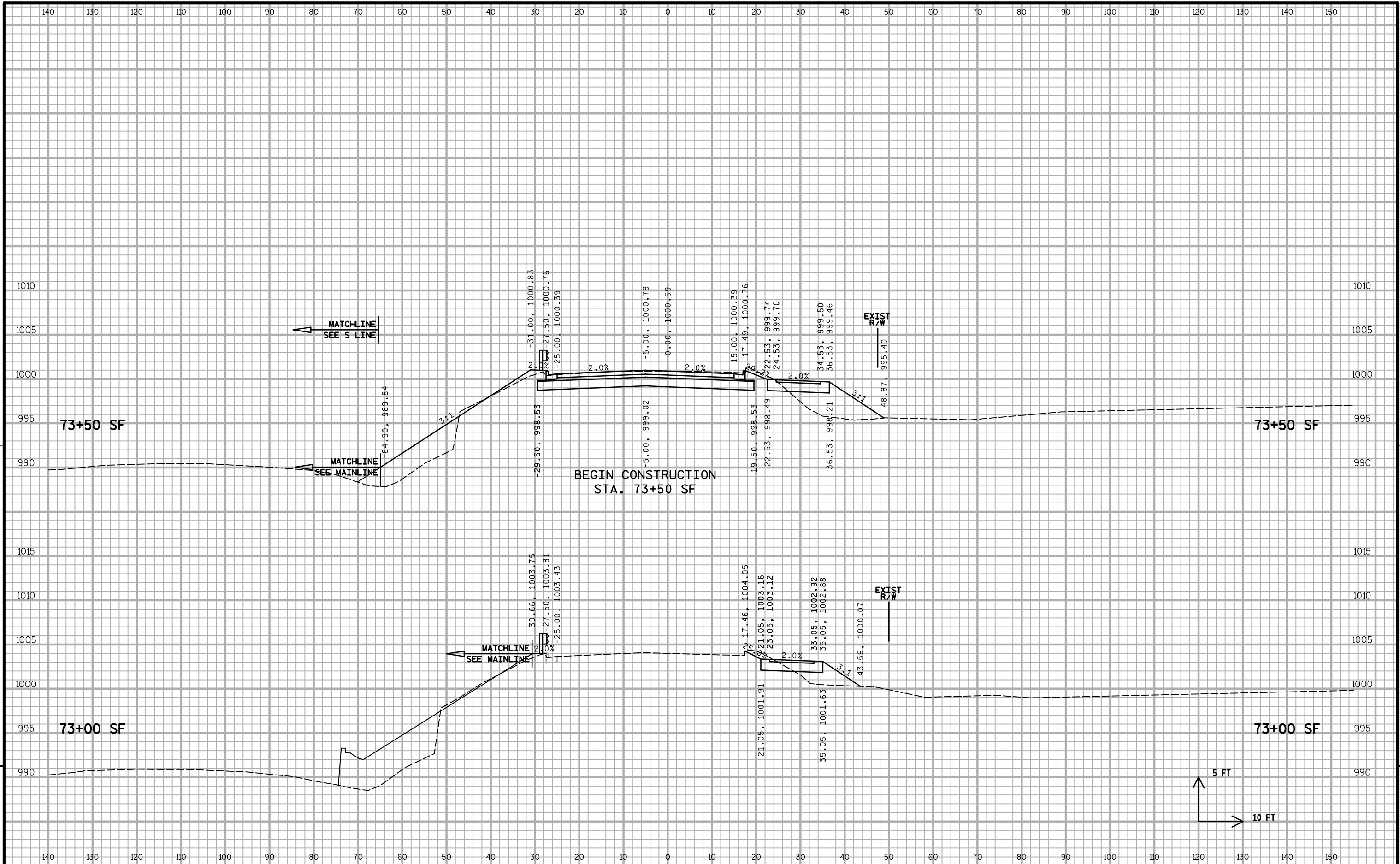


9

9

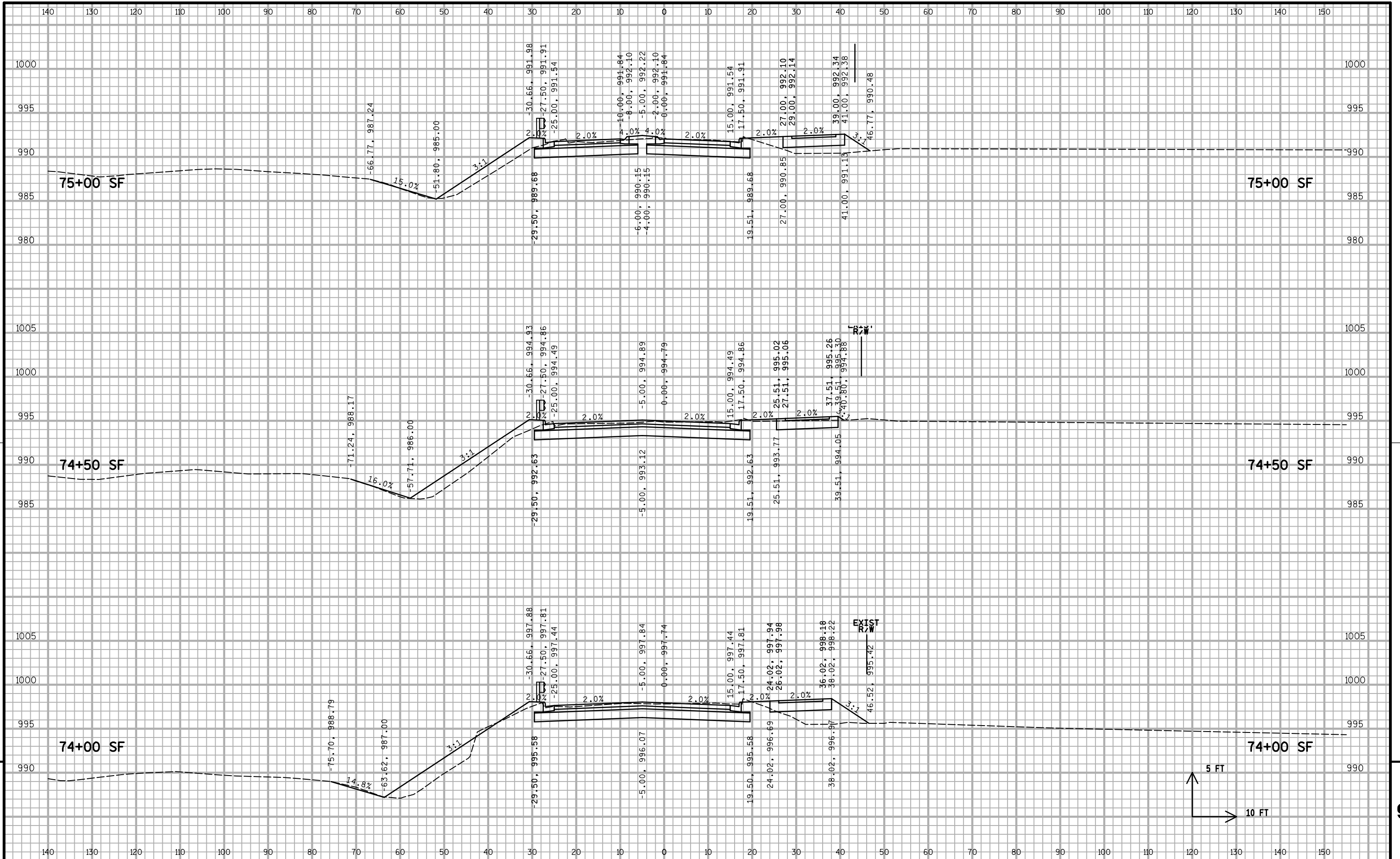


FOR PRELIMINARY USE ONLY



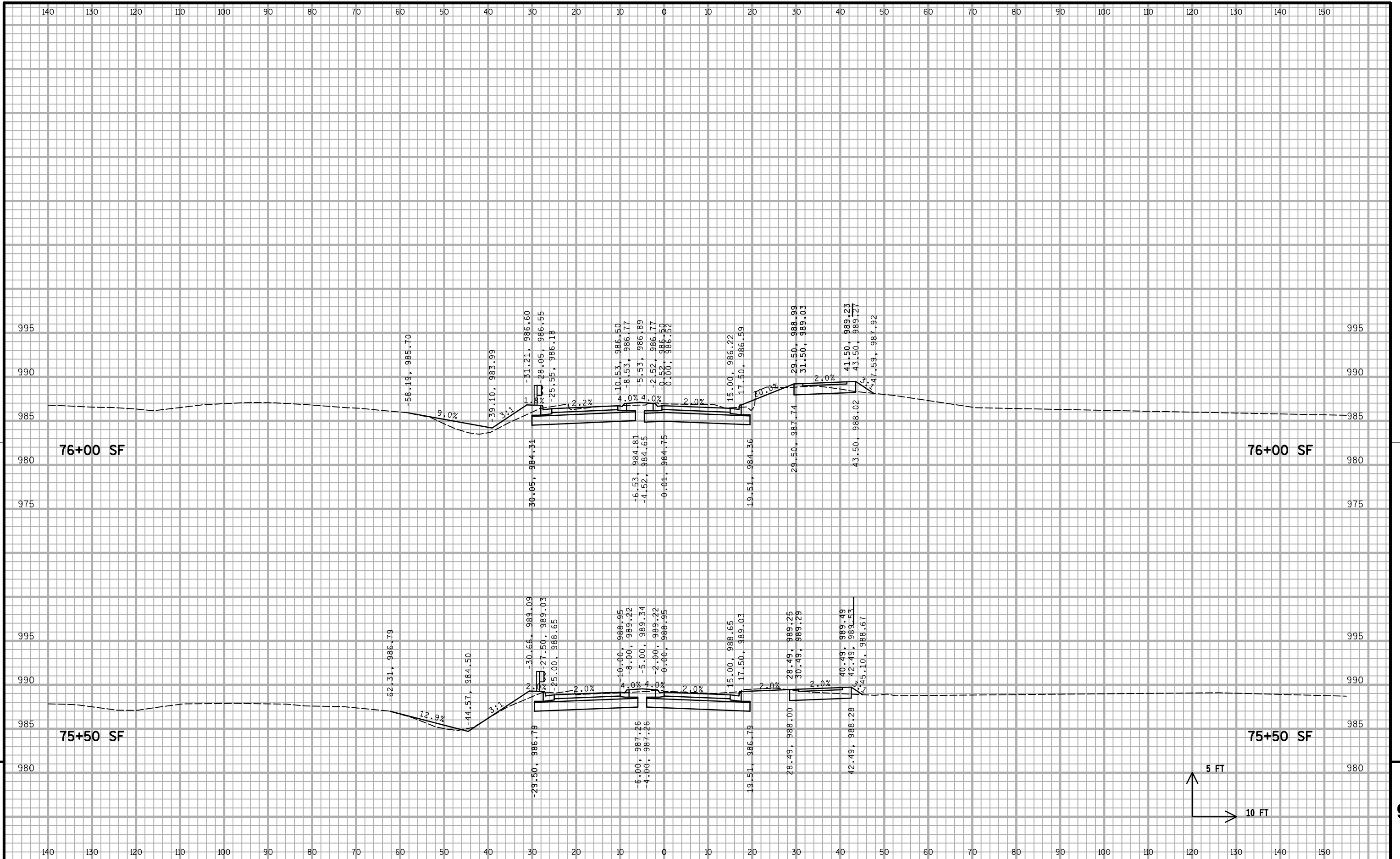
9
PROJECT NO: 1206-07-77
HWY: USH 18
COUNTY: DANE
CROSS SECTIONS - SEMINOLE FRONTAGE ROAD (SF LINE)
SHEET
E

FOR PRELIMINARY USE ONLY



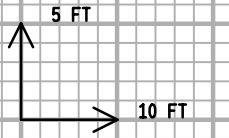
PROJECT NO: 1206-07-77 HWY: USH 18 COUNTY: DANE CROSS SECTIONS - SEMINOLE FRONTAGE ROAD (SF LINE) SHEET E

FOR PRELIMINARY USE ONLY



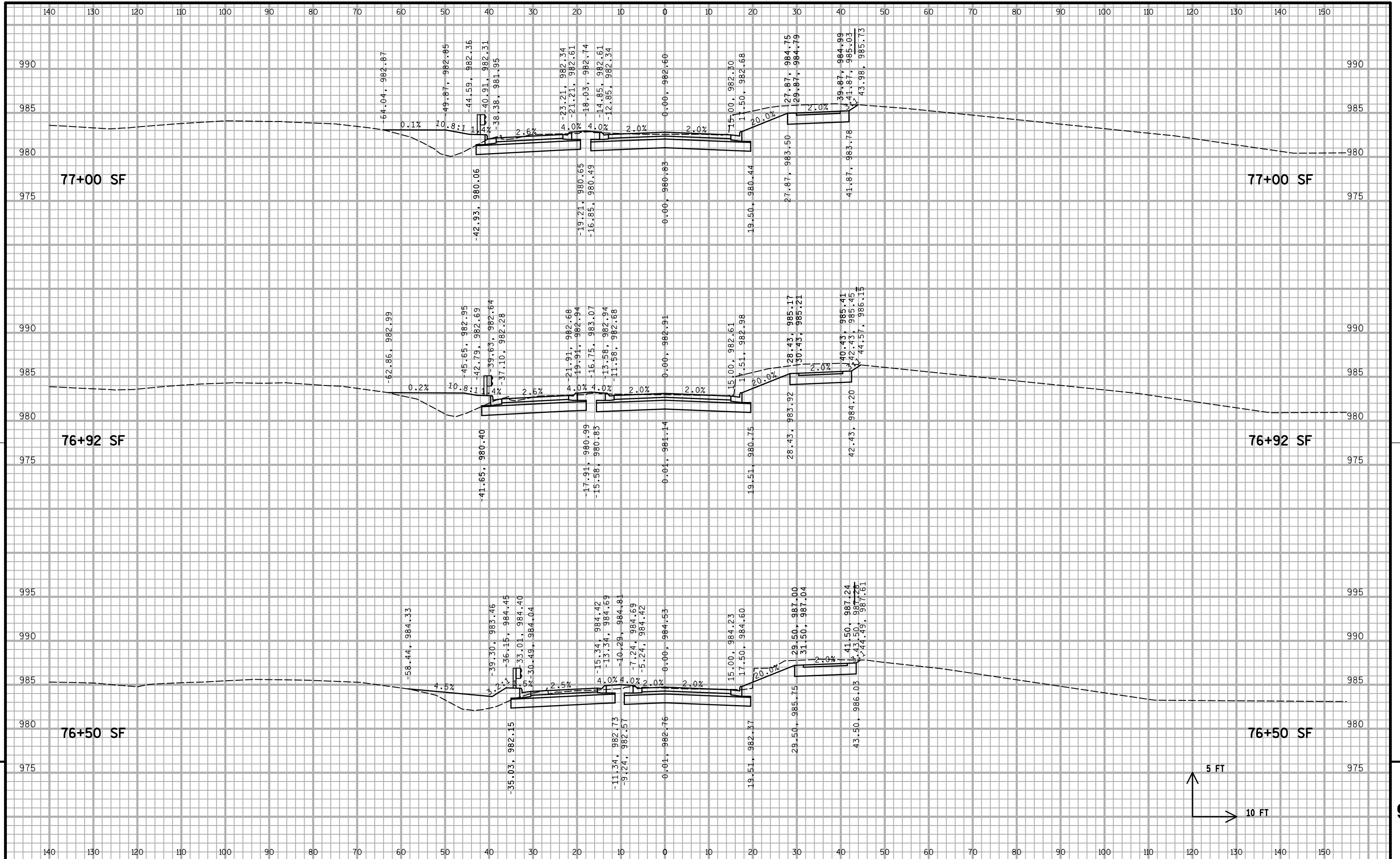
9

9



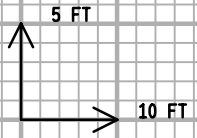
PROJECT NO: 1206-07-77 HWY: USH 18 COUNTY: DANE CROSS SECTIONS - SEMINOLE FRONTAGE ROAD (SF LINE) SHEET E

FOR PRELIMINARY USE ONLY



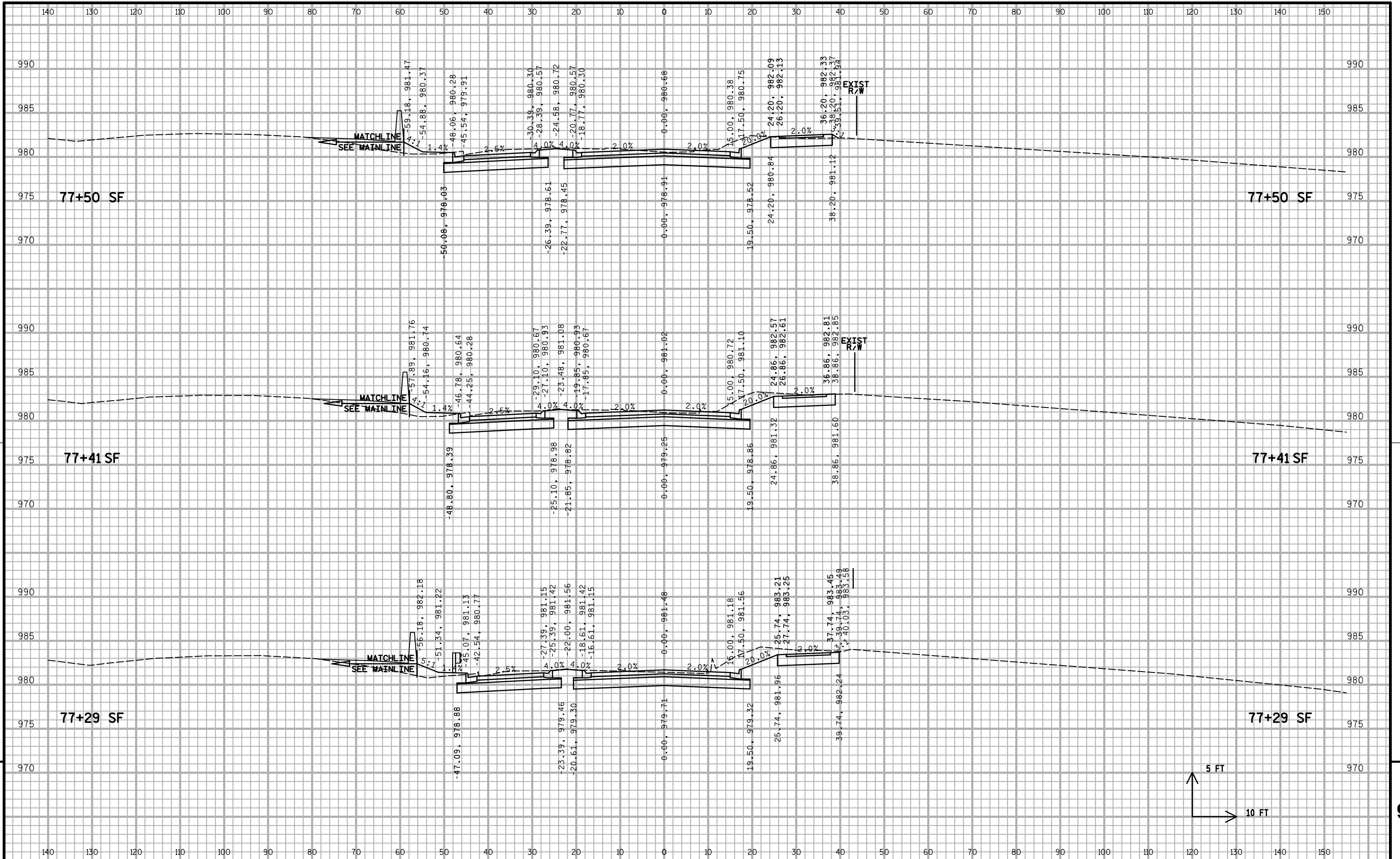
9

9



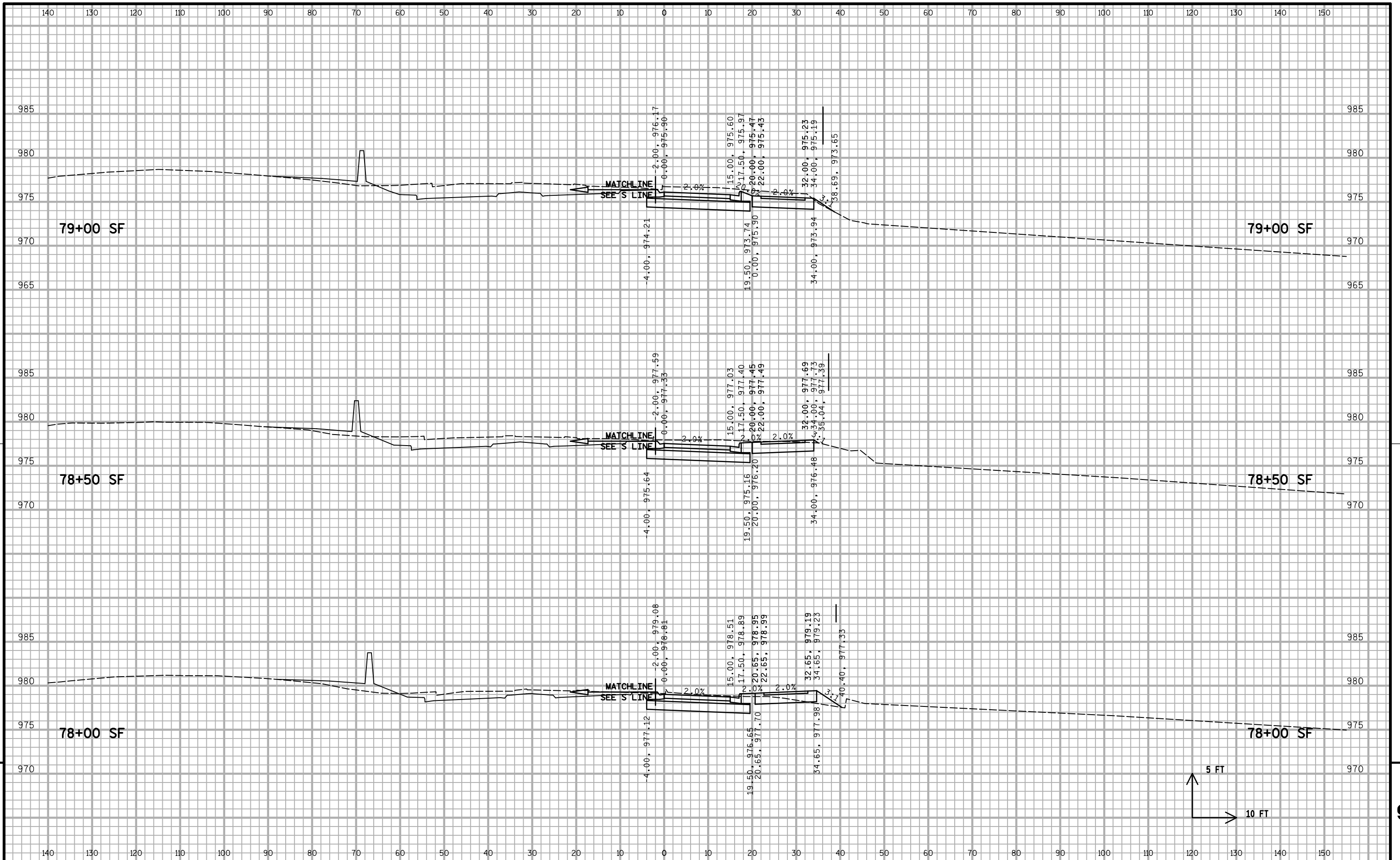
PROJECT NO: 1206-07-77 HWY: USH 18 COUNTY: DANE CROSS SECTIONS - SEMINOLE FRONTAGE ROAD (SF LINE) SHEET E

FOR PRELIMINARY USE ONLY



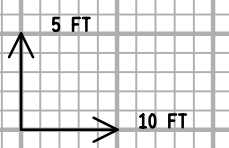
9
5 FT
10 FT
9

FOR PRELIMINARY USE ONLY

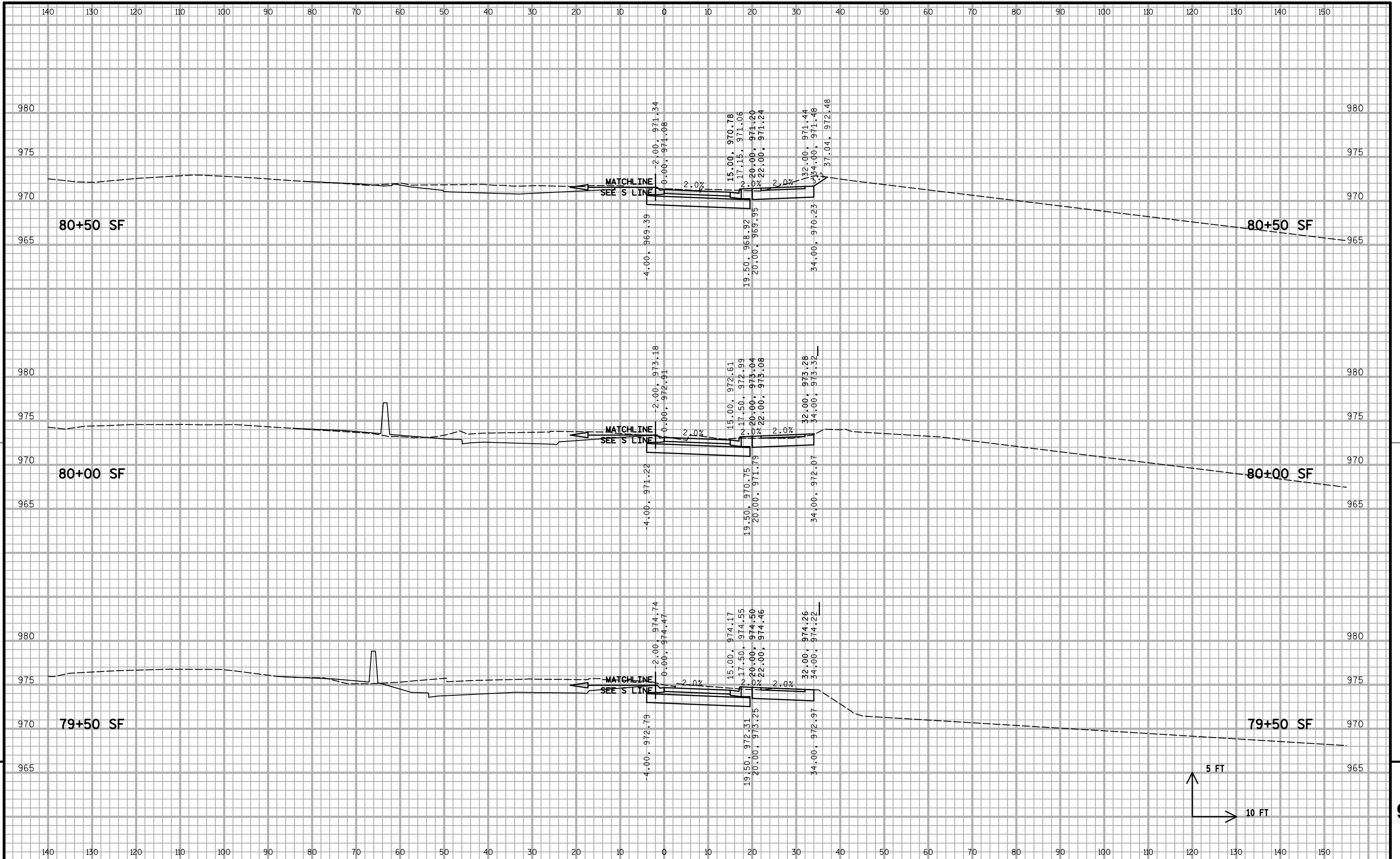


9

9



FOR PRELIMINARY USE ONLY



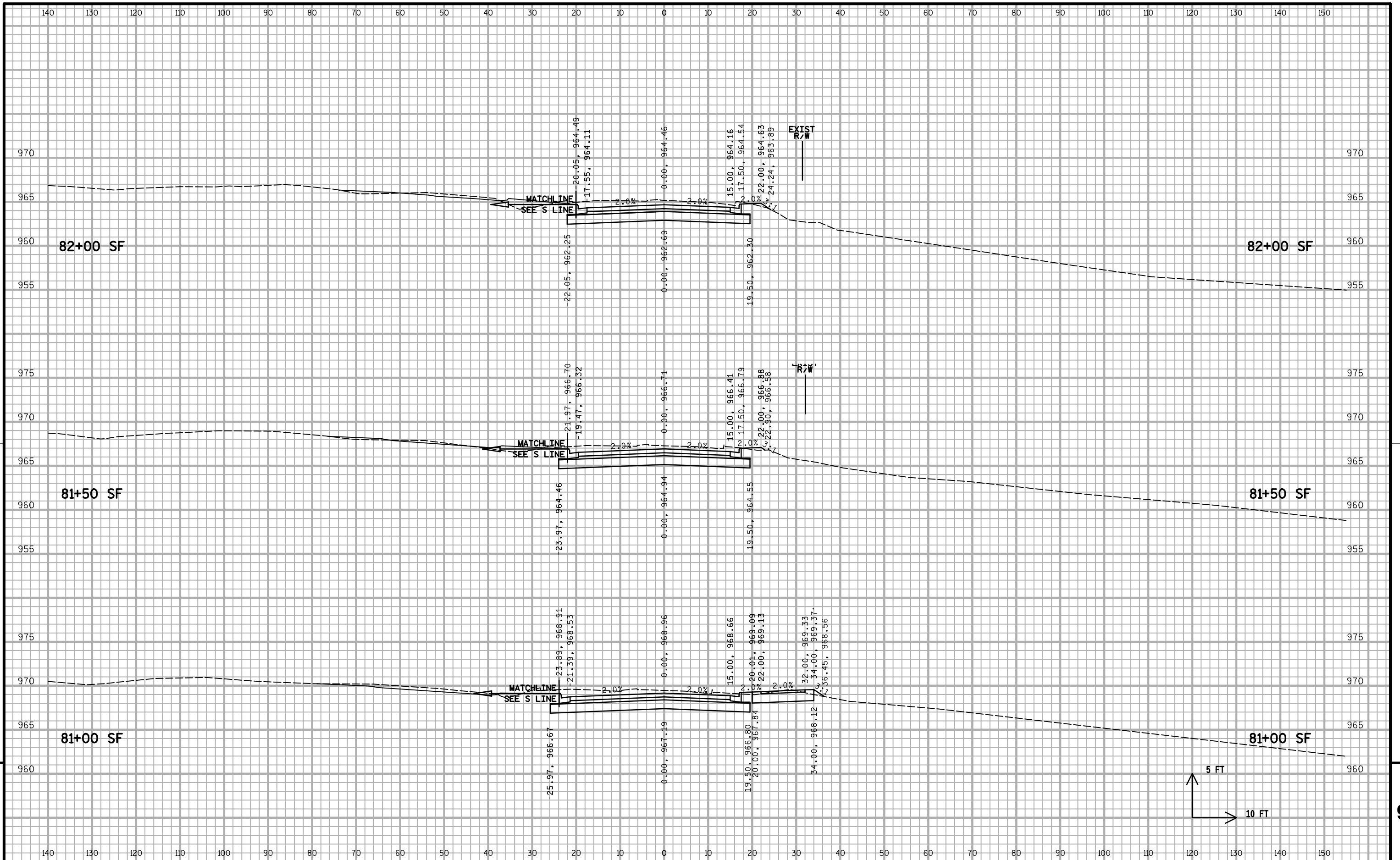
9

9

PROJECT NO: 1206-07-77 HWY: USH 18 COUNTY: DANE CROSS SECTIONS - SEMINOLE FRONTAGE ROAD (SF LINE) SHEET E

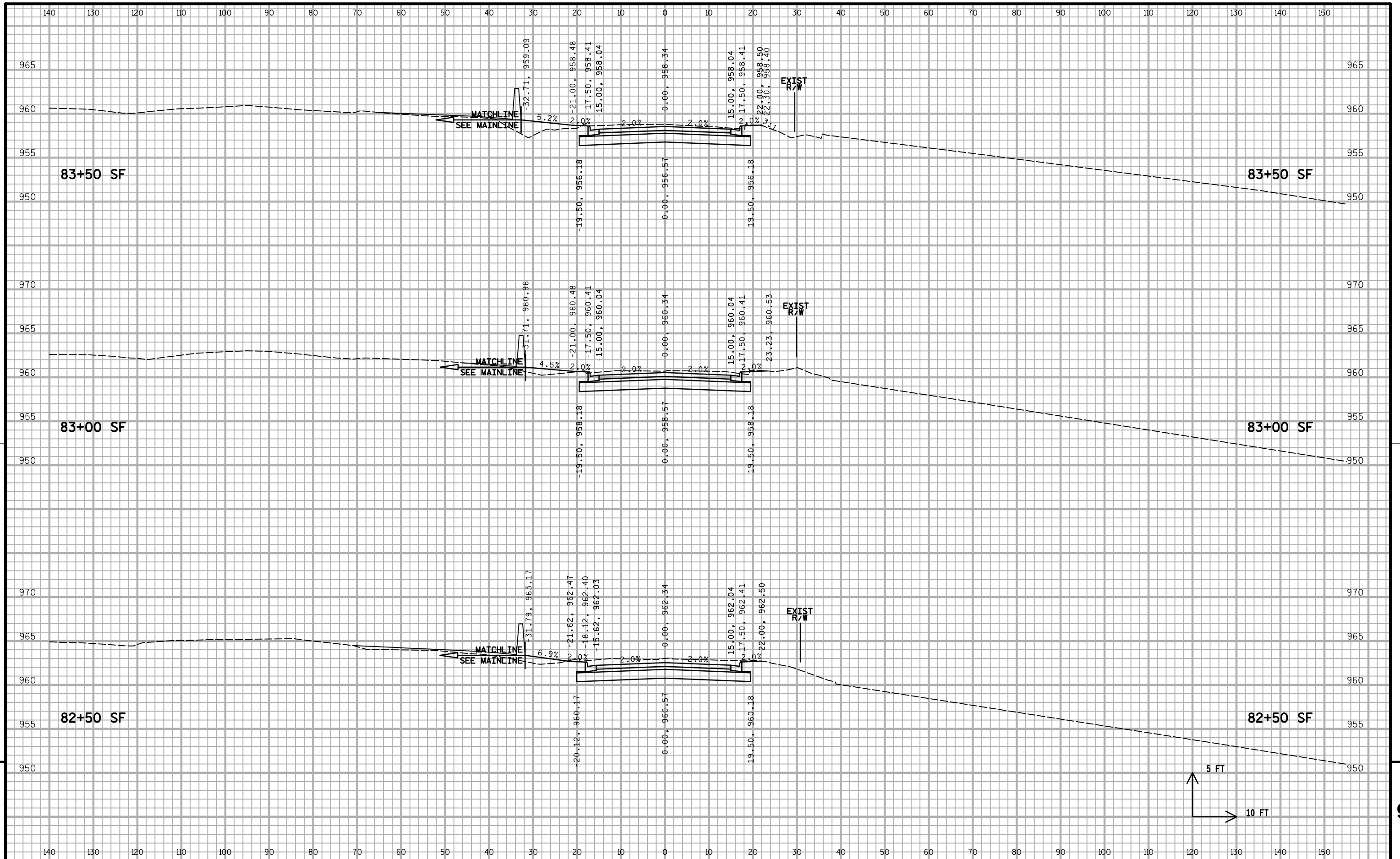
FILE NAME : S:\MAD\1000--1099\1089\251\Micros\PLAN\0777\090205_xs_sf.dgn PLOT DATE : 11/14/2012 PLOT BY : _username_ PLOT NAME : PLOT SCALE : \$\$.....plotscale.....\$\$ WISDOT/CADDs SHEET 21

FOR PRELIMINARY USE ONLY



PROJECT NO: 1206-07-77 HWY: USH 18 COUNTY: DANE CROSS SECTIONS - SEMINOLE FRONTAGE ROAD (SF LINE) SHEET E

FOR PRELIMINARY USE ONLY



9

9

PROJECT NO: 1206-07-77

HWY: USH 18

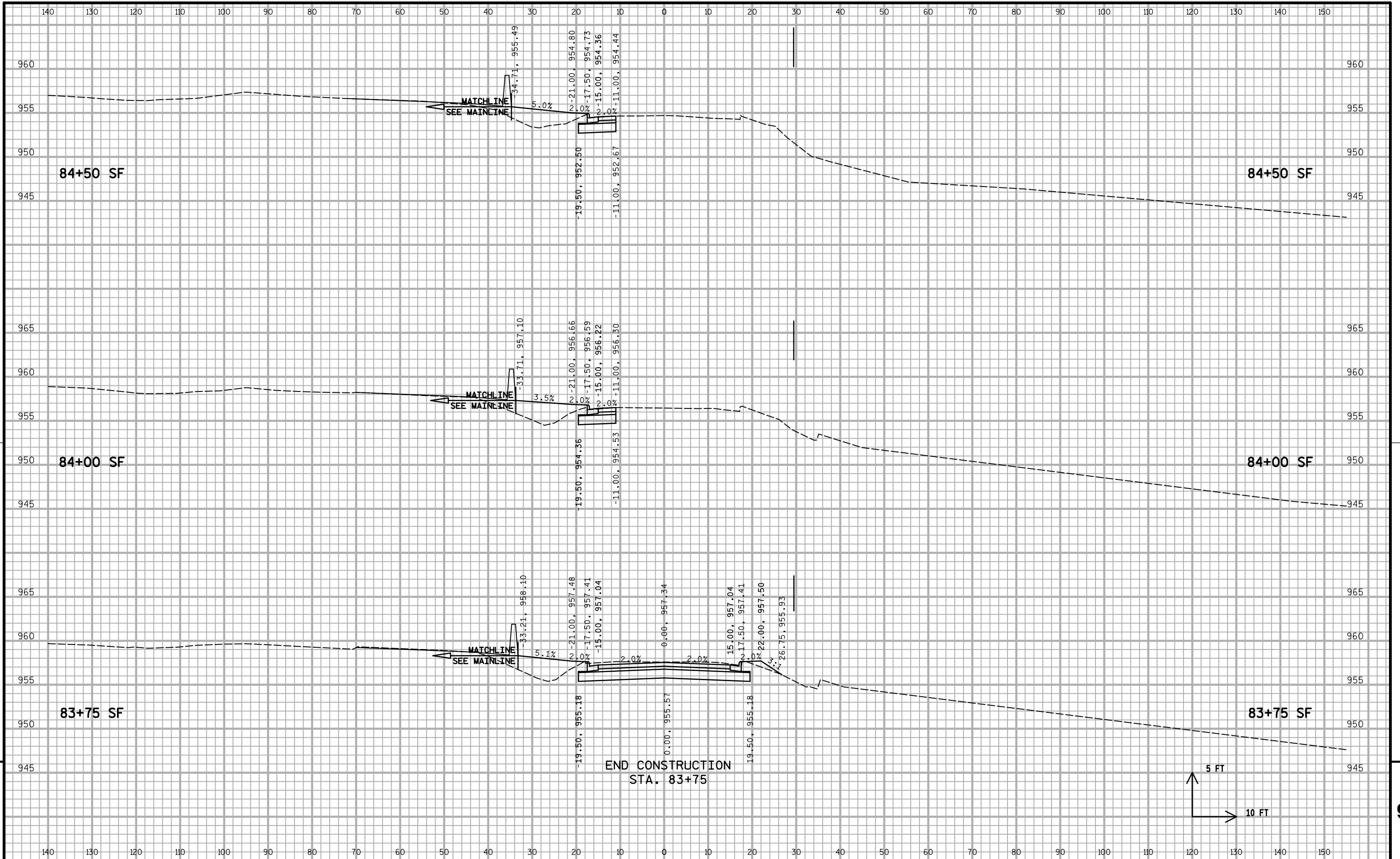
COUNTY: DANE

CROSS SECTIONS - SEMINOLE FRONTAGE ROAD (SF LINE)

SHEET

E

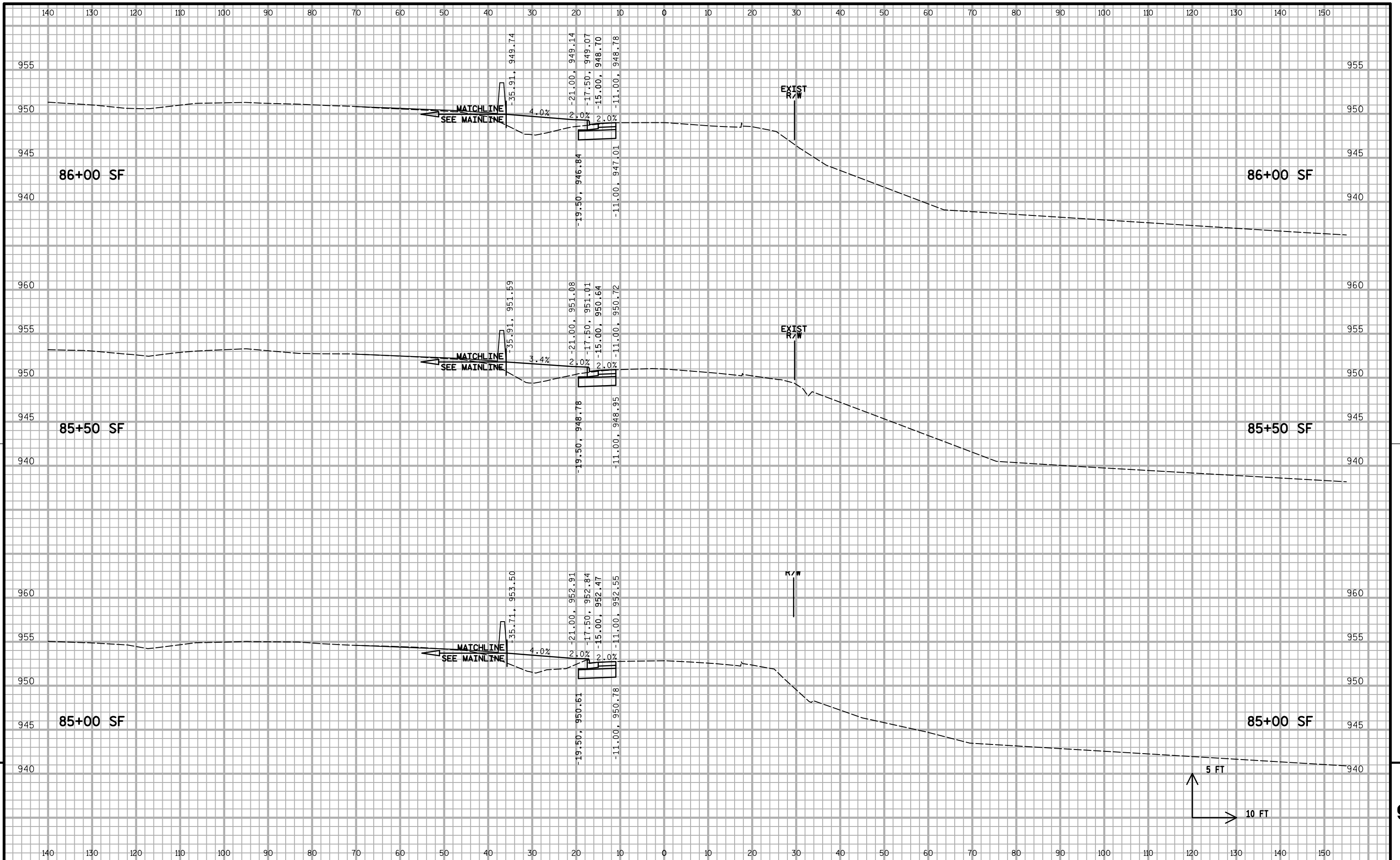
FOR PRELIMINARY USE ONLY



9

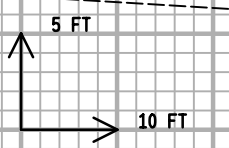
9

FOR PRELIMINARY USE ONLY



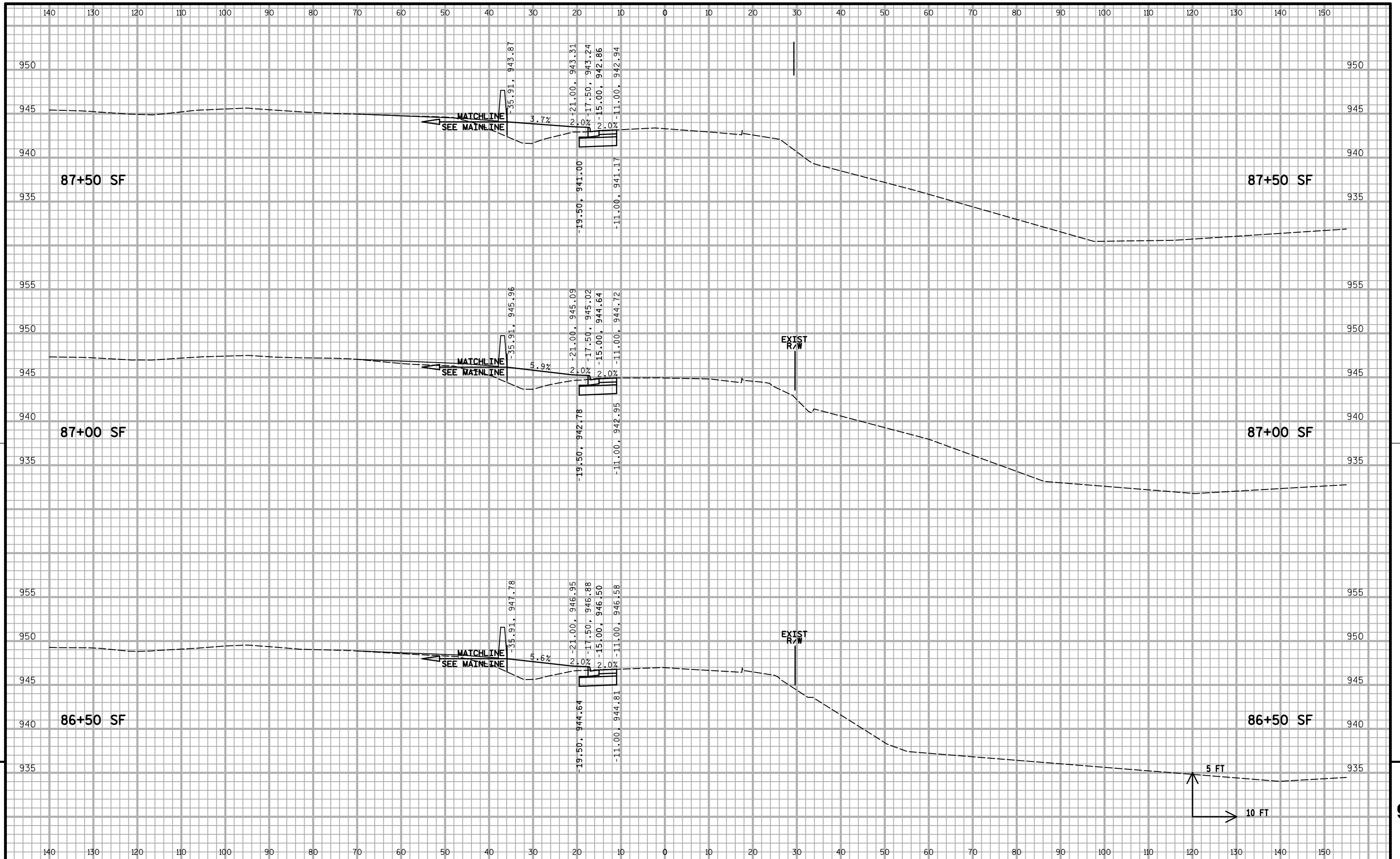
9

9



PROJECT NO: 1206-07-77	HWY: USH 18	COUNTY: DANE	CROSS SECTIONS - SEMINOLE FRONTAGE ROAD (SF LINE)	SHEET
------------------------	-------------	--------------	---	-------

FOR PRELIMINARY USE ONLY



9

9

PROJECT NO: 1206-07-77

HWY: USH 18

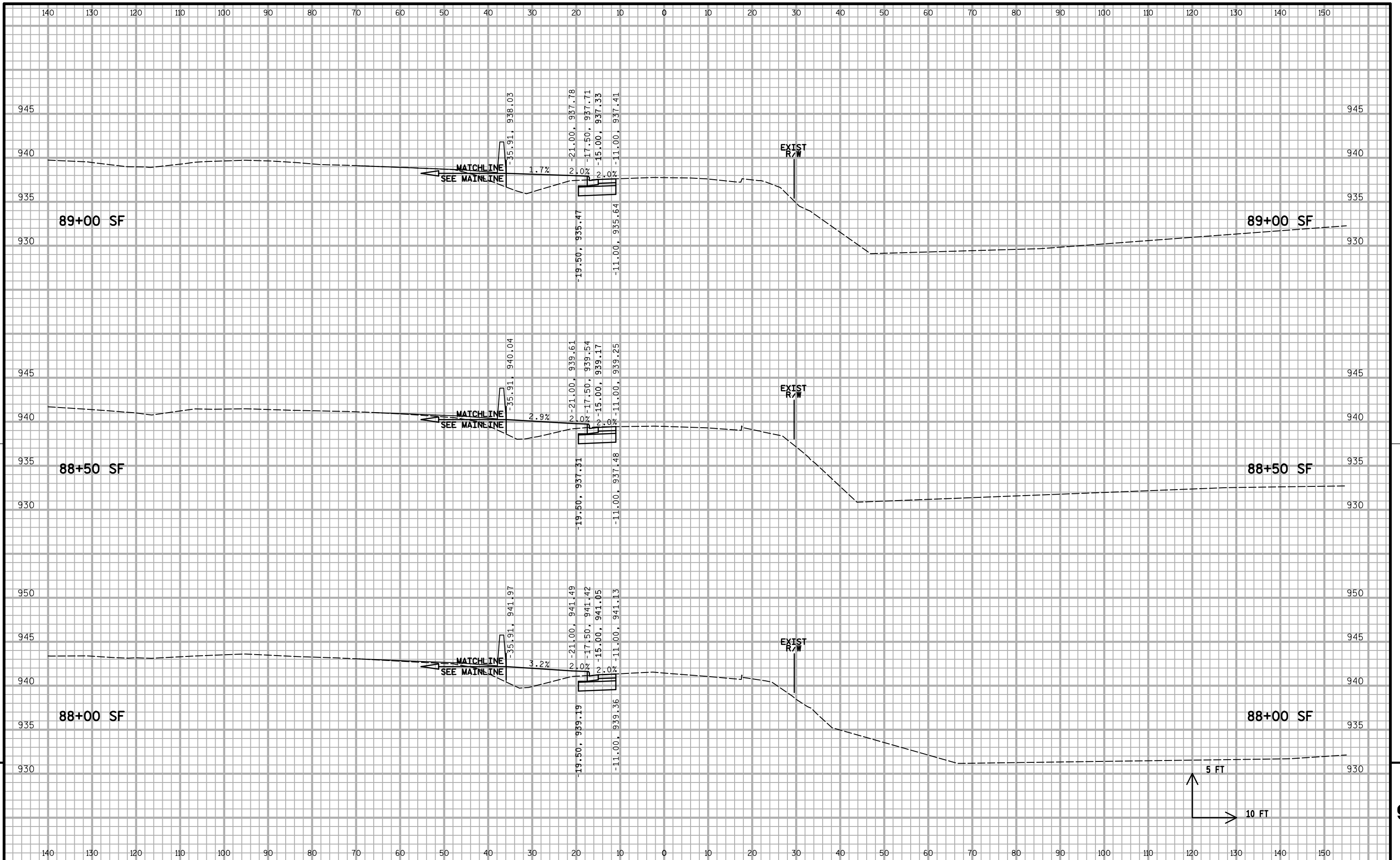
COUNTY: DANE

CROSS SECTIONS - SEMINOLE FRONTAGE ROAD (SF LINE)

SHEET

E

FOR PRELIMINARY USE ONLY

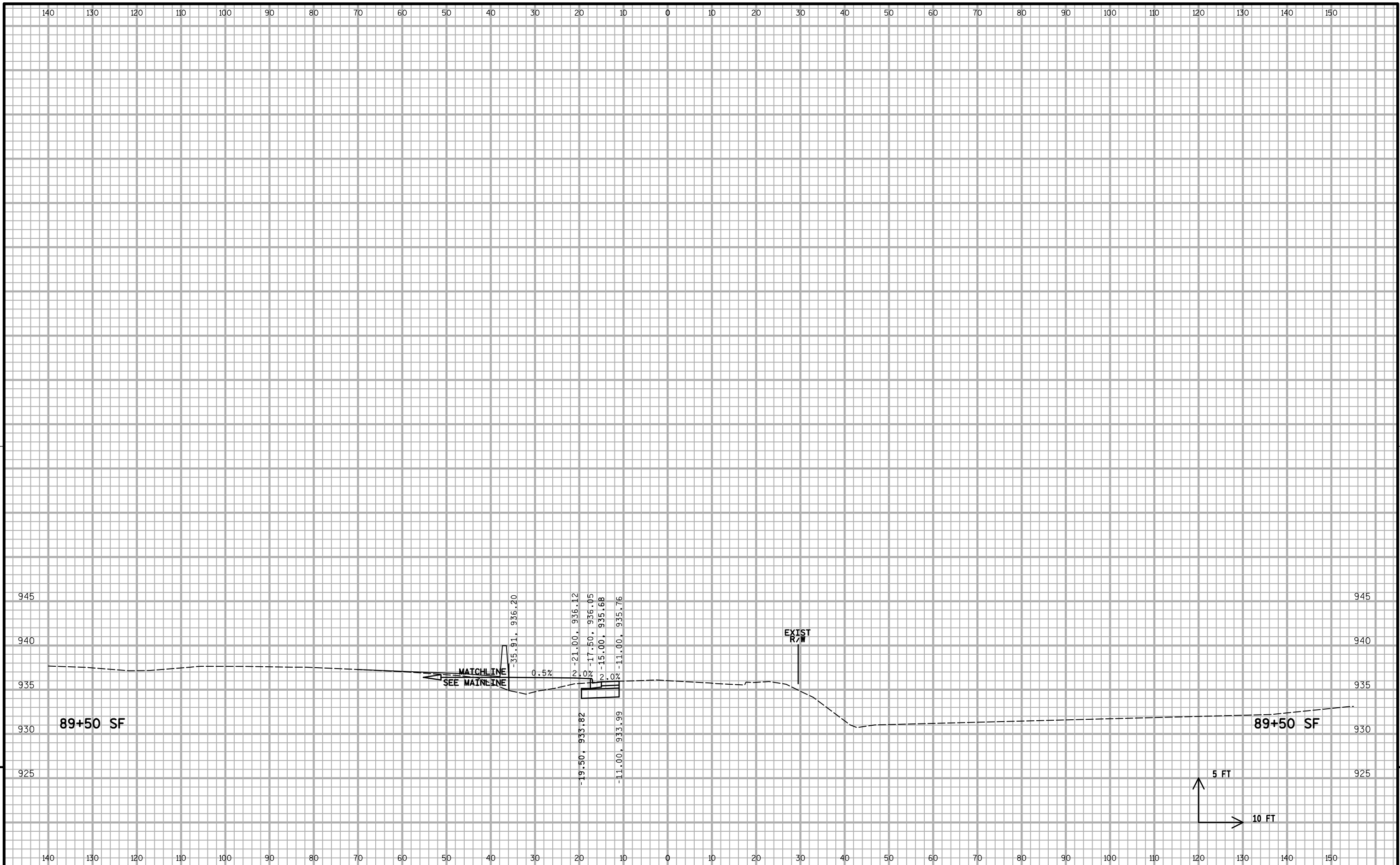


9

9

PROJECT NO: 1206-07-77
HWY: USH 18
COUNTY: DANE
CROSS SECTIONS - SEMINOLE FRONTAGE ROAD (SF LINE)
SHEET
E

FOR PRELIMINARY USE ONLY



PROJECT NO: 1206-07-77
HWY: USH 18
COUNTY: DANE
CROSS SECTIONS - SEMINOLE FRONTAGE ROAD (SF LINE)
SHEET
9