

BURR JONES PARK - SITE IMPROVEMENTS

City of Madison
Department of Public Works
PARKS DIVISION

City-County Building, Suite 104
210 Martin Luther King, Jr. Blvd.
Madison, WI 53703

play
**MADISON
PARKS**

PROJECT:

**BURR JONES
PARK SITE
IMPROVEMENTS**

**BURR JONES PARK
1820 E. WASHINGTON AVE.
MADISON, WI 53704**

Although every effort has been made in preparing these plans and checking them for accuracy, the contractor and subcontractors must check all details and dimensions of their trade and be responsible for the same.

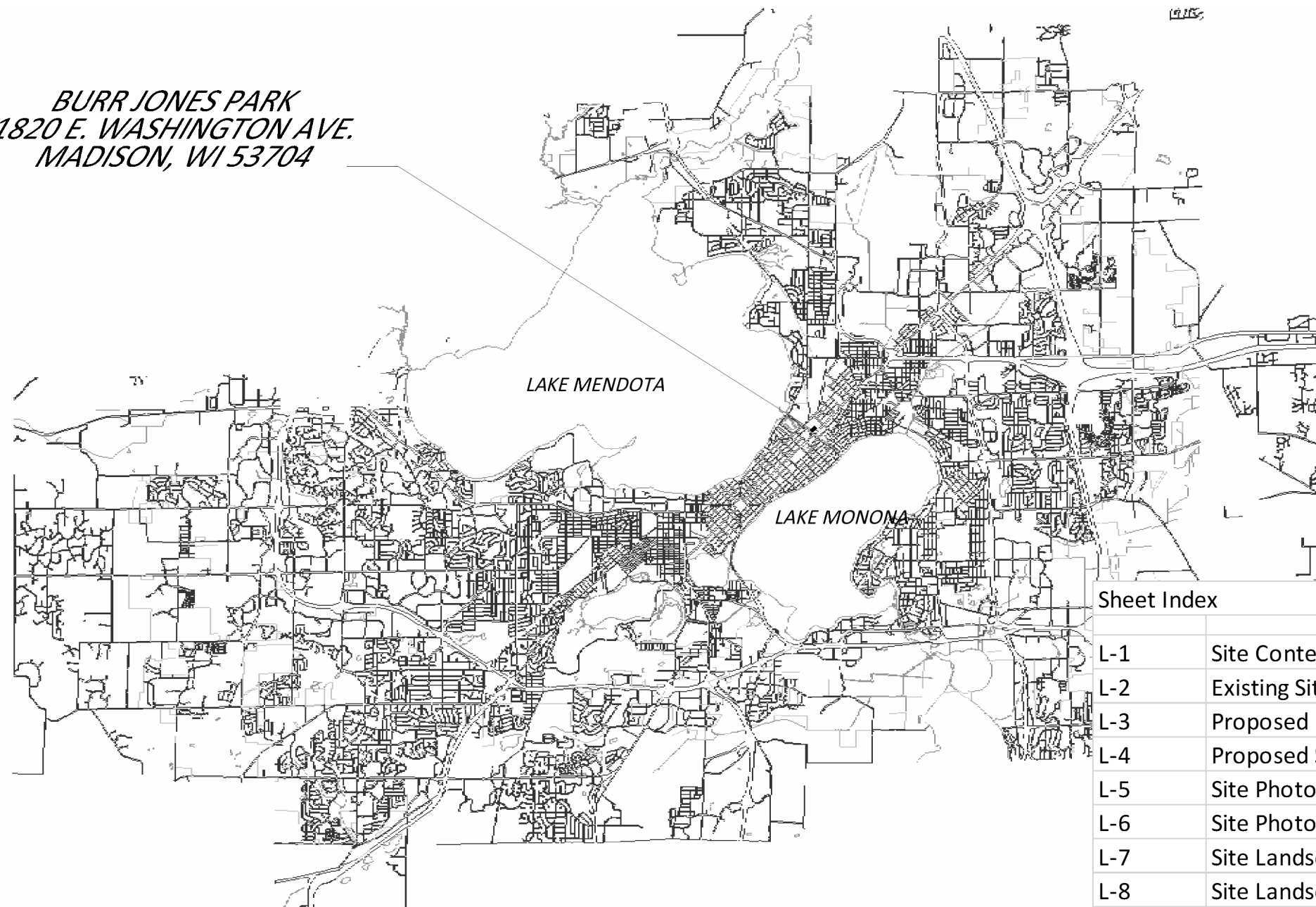
ITEM	DATE
Drawn by:	xx-xx-xxxx
Approved by:	xx-xx-xxxx

PUBLIC WORKS PROJECT #:
8359

SHEET TITLE:

SHEET NUMBER:

**BURR JONES PARK
1820 E. WASHINGTON AVE.
MADISON, WI 53704**



Sheet Index	
L-1	Site Context
L-2	Existing Site
L-3	Proposed Improvements
L-4	Proposed Site Grading
L-5	Site Photos
L-6	Site Photos
L-7	Site Landscape Plan
L-8	Site Landscape Plan - Parking Lot
L-9	Proposed Fence



City of Madison
 Department of Public Works
PARKS DIVISION

City-County Building, Suite 104
 210 Martin Luther King, Jr. Blvd.
 Madison, WI 53703

play
**MADISON
 PARKS**

Graphical Scale
 0 100 ft

PROJECT:
**BURR JONES
 PARK SITE
 IMPROVEMENTS**

BURR JONES PARK
 1820 E. WASHINGTON AVE.
 MADISON, WI 53704

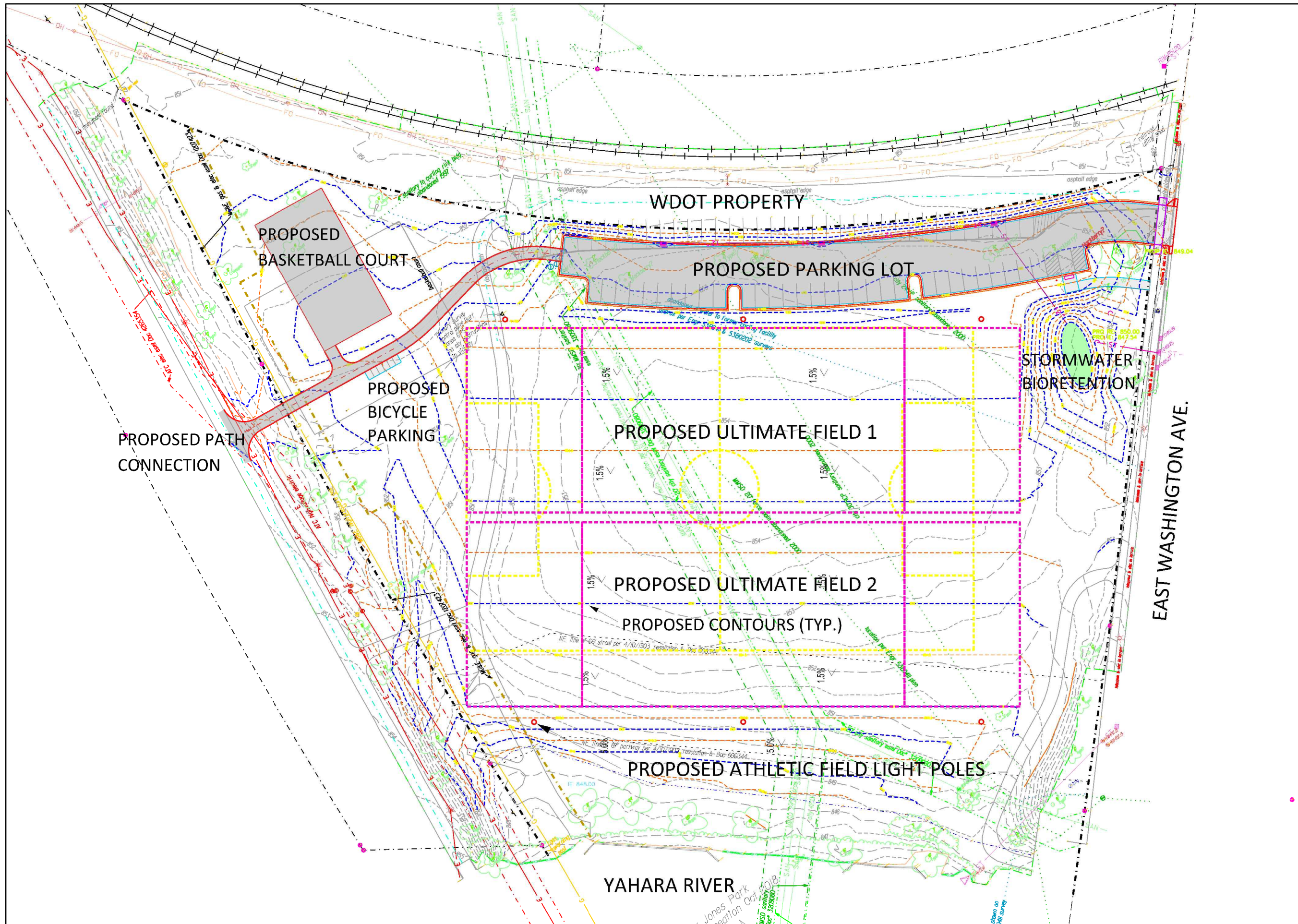
Although every effort has been made in preparing these plans and checking them for accuracy, the contractor and subcontractors must check all details and dimensions of their trade and be responsible for the same.

ITEM	DATE
Drawn by:	XX-XX-XXXX
Approved by:	XX-XX-XXXX

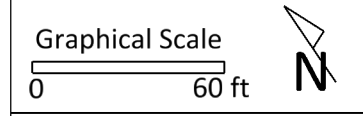
PUBLIC WORKS PROJECT #:
8359

SHEET TITLE:
SITE CONTEXT

SHEET NUMBER:
L-1



City of Madison
 Department of Public Works
PARKS DIVISION
 City-County Building, Suite 104
 210 Martin Luther King, Jr. Blvd.
 Madison, WI 53703



PROJECT:
**BURR JONES
 PARK SITE
 IMPROVEMENTS**

*BURR JONES PARK
 1820 E. WASHINGTON AVE.
 MADISON, WI 53704*

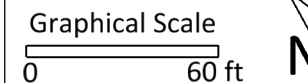
Although every effort has been made in preparing these plans and checking them for accuracy, the contractor and subcontractors must check all details and dimensions of their trade and be responsible for the same.

ITEM	DATE
Drawn by:	xx-xx-xxxx
Approved by:	xx-xx-xxxx

PUBLIC WORKS PROJECT #:
8359

SHEET TITLE:
**PROPOSED SITE
 GRADING**

SHEET NUMBER:
L-4



PROJECT:
**BURR JONES
 PARK SITE
 IMPROVEMENTS**

**BURR JONES PARK
 1820 E. WASHINGTON AVE.
 MADISON, WI 53704**

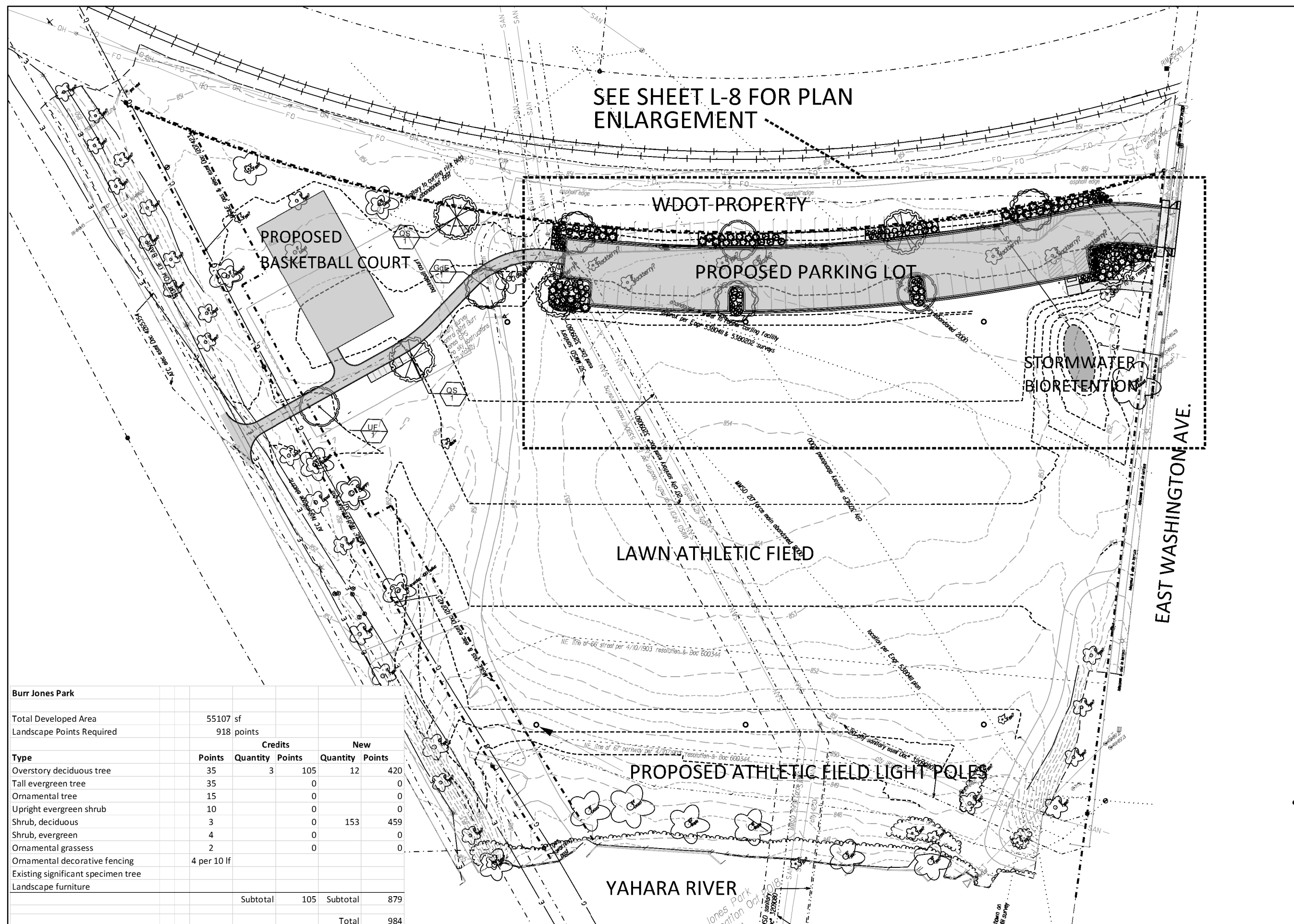
Although every effort has been made in preparing these plans and checking them for accuracy, the contractor and subcontractors must check all details and dimensions of their trade and be responsible for the same.

ITEM	DATE
Drawn by:	xx-xx-xxxx
Approved by:	xx-xx-xxxx

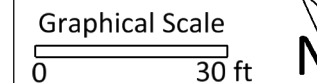
PUBLIC WORKS PROJECT #:
8359

SHEET TITLE:
**SITE LANDSCAPE
 PLAN**

SHEET NUMBER:
L-7



Burr Jones Park					
Total Developed Area		55107 sf			
Landscape Points Required		918 points			
Type	Points	Credits		New	
		Quantity	Points	Quantity	Points
Overstory deciduous tree	35	3	105	12	420
Tall evergreen tree	35		0		0
Ornamental tree	15		0		0
Upright evergreen shrub	10		0		0
Shrub, deciduous	3		0	153	459
Shrub, evergreen	4		0		0
Ornamental grasses	2		0		0
Ornamental decorative fencing	4 per 10 lf				
Existing significant specimen tree					
Landscape furniture					
		Subtotal	105	Subtotal	879
			Total		984



PROJECT:
**BURR JONES
 PARK SITE
 IMPROVEMENTS**

BURR JONES PARK
 1820 E. WASHINGTON AVE.
 MADISON, WI 53704

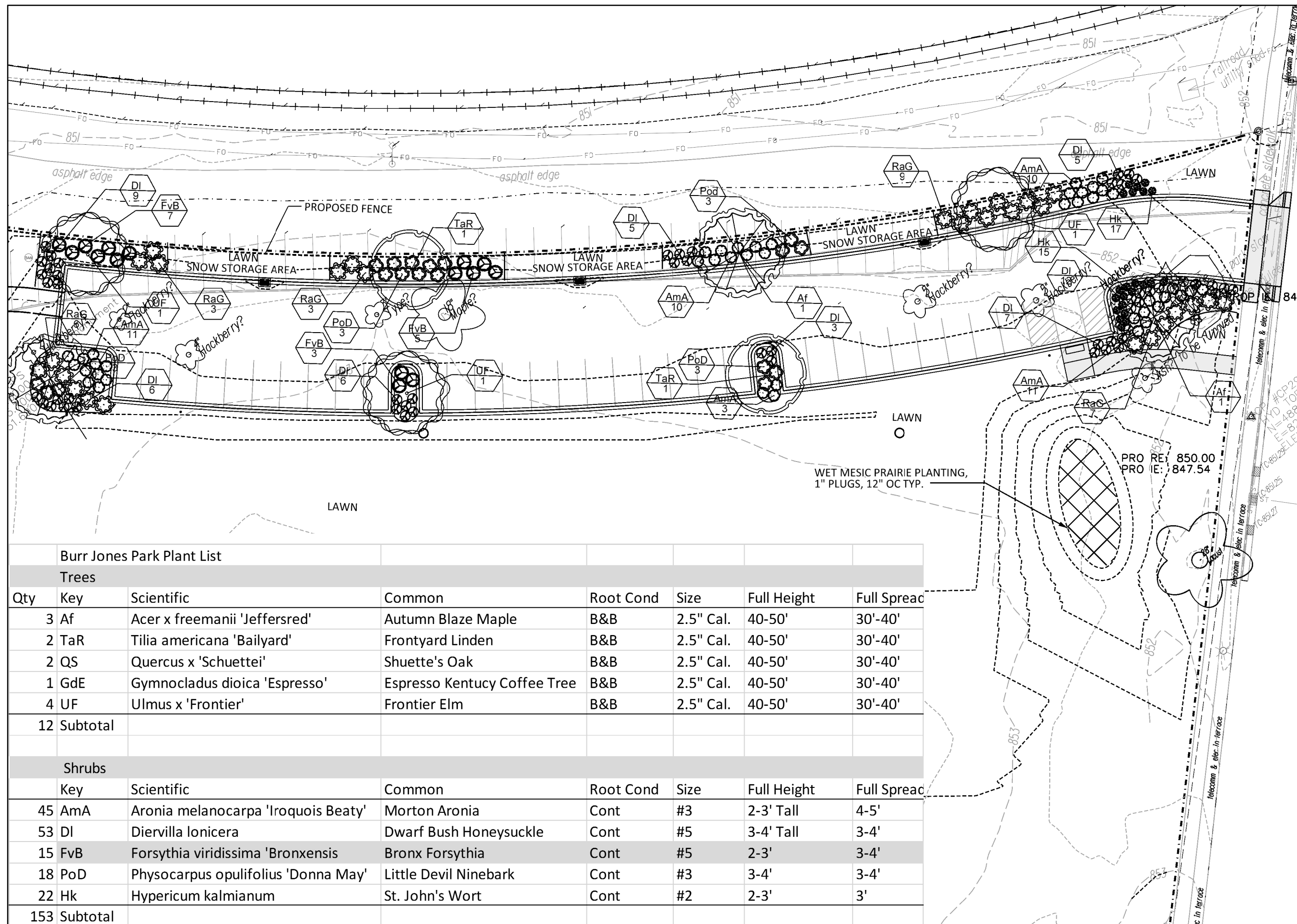
Although every effort has been made in preparing these plans and checking them for accuracy, the contractor and subcontractors must check all details and dimensions of their trade and be responsible for the same.

ITEM	DATE
Drawn by:	xx-xx-xxxx
Approved by:	xx-xx-xxxx

PUBLIC WORKS PROJECT #:
8359

SHEET TITLE:
**LANDSCAPE PLAN -
 PARKING LOT**

SHEET NUMBER:
L-8



Burr Jones Park Plant List

Trees							
Qty	Key	Scientific	Common	Root Cond	Size	Full Height	Full Spread
3	Af	Acer x freemanii 'Jeffersred'	Autumn Blaze Maple	B&B	2.5" Cal.	40-50'	30'-40'
2	TaR	Tilia americana 'Bailyard'	Frontyard Linden	B&B	2.5" Cal.	40-50'	30'-40'
2	QS	Quercus x 'Schuettei'	Shuette's Oak	B&B	2.5" Cal.	40-50'	30'-40'
1	GdE	Gymnocladus dioica 'Espresso'	Espresso Kentucky Coffee Tree	B&B	2.5" Cal.	40-50'	30'-40'
4	UF	Ulmus x 'Frontier'	Frontier Elm	B&B	2.5" Cal.	40-50'	30'-40'
12	Subtotal						
Shrubs							
Qty	Key	Scientific	Common	Root Cond	Size	Full Height	Full Spread
45	AmA	Aronia melanocarpa 'Iroquois Beaty'	Morton Aronia	Cont	#3	2-3' Tall	4-5'
53	DI	Diervilla lonicera	Dwarf Bush Honeysuckle	Cont	#5	3-4' Tall	3-4'
15	FvB	Forsythia viridissima 'Bronxensis'	Bronx Forsythia	Cont	#5	2-3'	3-4'
18	PoD	Physocarpus opulifolius 'Donna May'	Little Devil Ninebark	Cont	#3	3-4'	3-4'
22	Hk	Hypericum kalmianum	St. John's Wort	Cont	#2	2-3'	3'
153	Subtotal						

TLC for LED® - Total Light Control



For nearly a decade, Musco has been testing the Light Emitting Diode (LED) light source and applying it in projects in which it was the best option. While LED saved energy, for a typical recreational facility the hours of operation weren't great enough to offset the higher cost.

With our Total Light Control—TLC for LED® technology, we've paired our expertise in light control with the advancing output of LED to the point where it's a cost-effective option for recreational facilities.

The result is a system that makes Musco's great lighting even better.

Better for Players... who want to perform their best and be able to track the entire flight of the ball.

Better for Neighbors... who don't want glare in or around their homes or lights left on when not in use.

Better for the Night Sky... with bright, uniform light directed onto the field and not spilling above it.



Trojan Park - 2016 NRPA Parks Build Community



LoConte Family Field - Clemson University