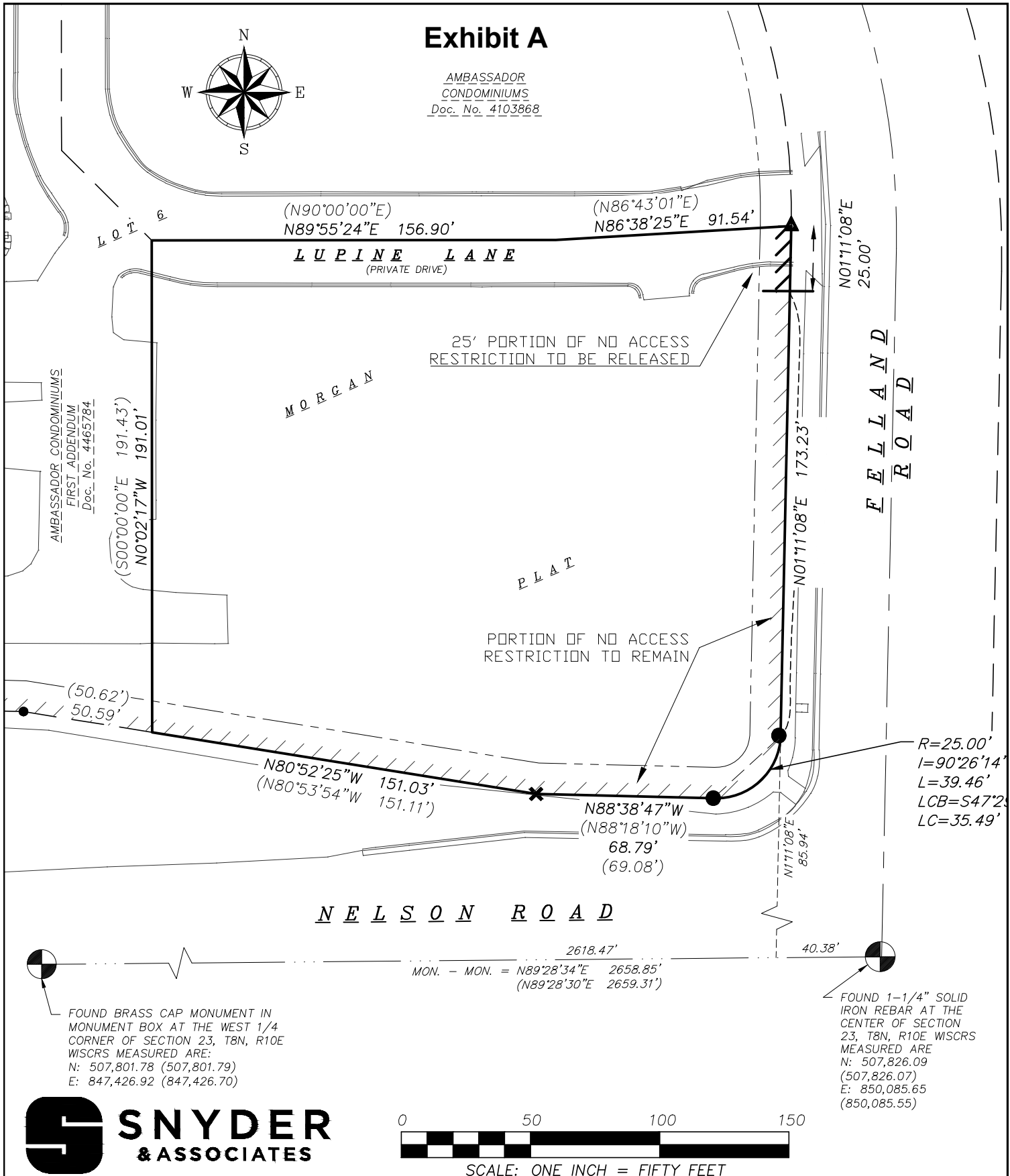
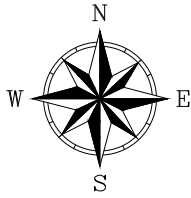


Exhibit A

AMBASSADOR
CONDOMINIUMS
Doc. No. 4103868



SCALE: ONE INCH = FIFTY FEET

V:\Projects\2017\117.0162.30\CADD\Exhibit Vehicular Access Release.dwg

PREPARED FOR:
CITY OF MADISON
1600 Emil Street
Madison, WI 53713

PREPARED BY:
Snyder & Associates, Inc.
5010 Voges Road
Madison, WI 53718
(608) 838-0444
www.snyder-associates.com

ACCESS RESTRICTION RELEASE MAP

PART OF LOT 6, MORGAN PLAT, AS RECORDED IN VOLUME 58-037A OF PLATS, ON PAGES 198-200, AS DOCUMENT NUMBER 3813097, DANE COUNTY REGISTRY, ALSO LOCATED IN THE SOUTHEAST QUARTER OF THE NORTHWEST QUARTER OF SECTION 23, TOWNSHIP 08 NORTH, RANGE 10 EAST, CITY OF MADISON, DANE COUNTY, WISCONSIN

FN: 117.0162.30
DATE: 9-14-18

REVISIONS:
