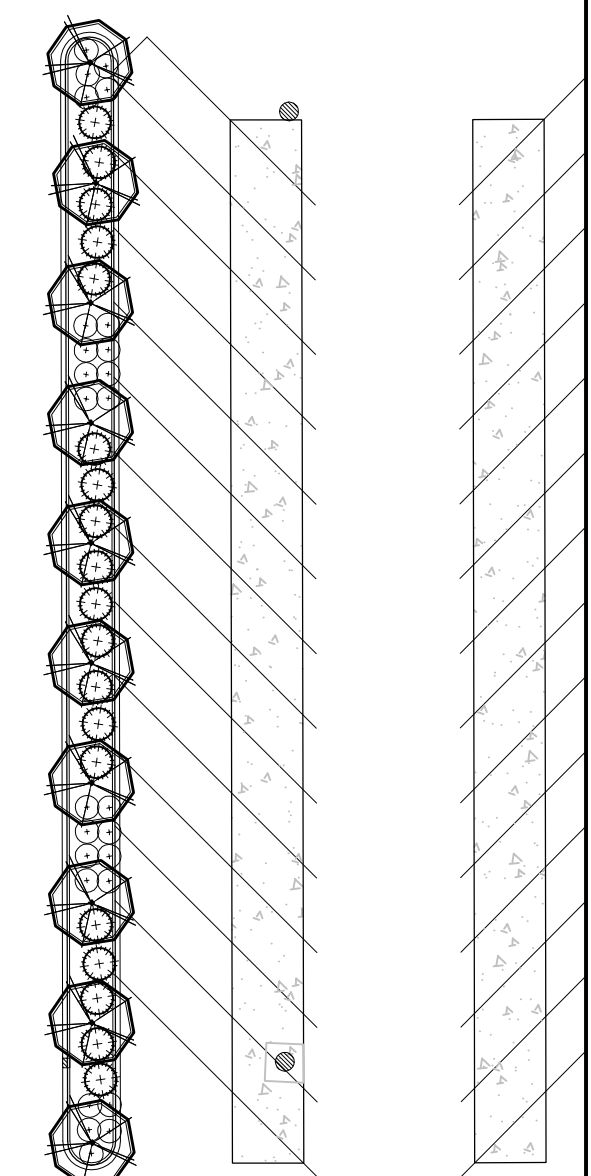
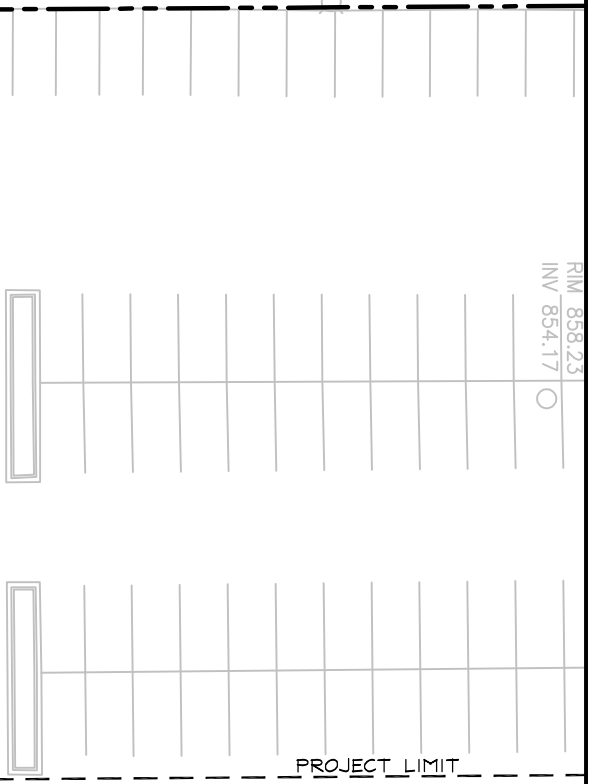


RIM 858.23
INV 854.17



SJA
 SCHREIBER / ANDERSON
 ASSOCIATES, INC.
 717 John Nolan Drive
 Madison, WI 53713
 P. 608.255.7750
 www.sja-madison.com

Professional Seal

Revision _____ Date _____

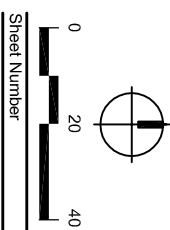
Project Name
**SWISS COLONY
 PARKING LOT
 IMPROVEMENTS
 PHASE 1**

The Swiss Colony
 3650 Milwaukee St
 Madison, WI

City of Madison,
 Wisconsin

Drawn By: JG
 Checked By: RV/JAL
 File:
 Issued For:
 Issue Date: 03/01/06
 Project No. 1910.01

SHEET TITLE
**LANDSCAPE
 PLAN**



C4.2

BID ALTERNATE B

MILWAUKEE STREET

RIM 858.59
INV NW 852.59