

APPLICATION FOR
URBAN DESIGN COMMISSION
REVIEW AND APPROVAL

AGENDA ITEM # _____
Project # _____

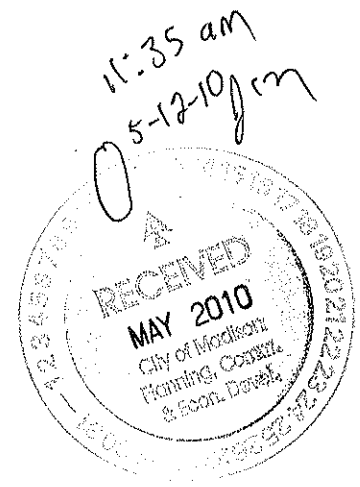
18647

DATE SUBMITTED: <u>5/15/10</u>	<input checked="" type="checkbox"/> Action Requested
UDC MEETING DATE: <u>6/2/10</u>	<input type="checkbox"/> Informational Presentation
	<input type="checkbox"/> Initial Approval and/or Recommendation
	<input type="checkbox"/> Final Approval and/or Recommendation

PROJECT ADDRESS: MADISON EAST SHOPPING CENTER²⁷⁰⁵
ALDERMANIC DISTRICT: 2700 BLOCK EAST WASHINGTON

OWNER/DEVELOPER (Partners and/or Principals) ARCHITECT/DESIGNER/OR AGENT:
McDONNOLD'S
1650 W. 82ND
MINNEAPOLIS, MN

CONTACT PERSON: MIKE MEAD
Address: 4973 N. LARKIN
WILMETTISH BAY, WI
Phone: 414 324 1462
Fax: _____
E-mail address: mike.mead@us.mcd.com



- TYPE OF PROJECT:
(See Section A for:)
- Planned Unit Development (PUD)
 - General Development Plan (GDP)
 - Specific Implementation Plan (SIP)
 - Planned Community Development (PCD)
 - General Development Plan (GDP)
 - Specific Implementation Plan (SIP)
 - Planned Residential Development (PRD)
 - New Construction or Exterior Remodeling in an Urban Design District * (A public hearing is required as well as a fee)
 - School, Public Building or Space (Fee may be required)
 - New Construction or Addition to or Remodeling of a Retail, Hotel or Motel Building Exceeding 40,000 Sq. Ft.
 - Planned Commercial Site
- (See Section B for:)
- New Construction or Exterior Remodeling in C4 District (Fee required)
- (See Section C for:)
- R.P.S.M. Parking Variance (Fee required)
- (See Section D for:)
- Comprehensive Design Review* (Fee required)
 - Street Graphics Variance* (Fee required)
 - Other _____

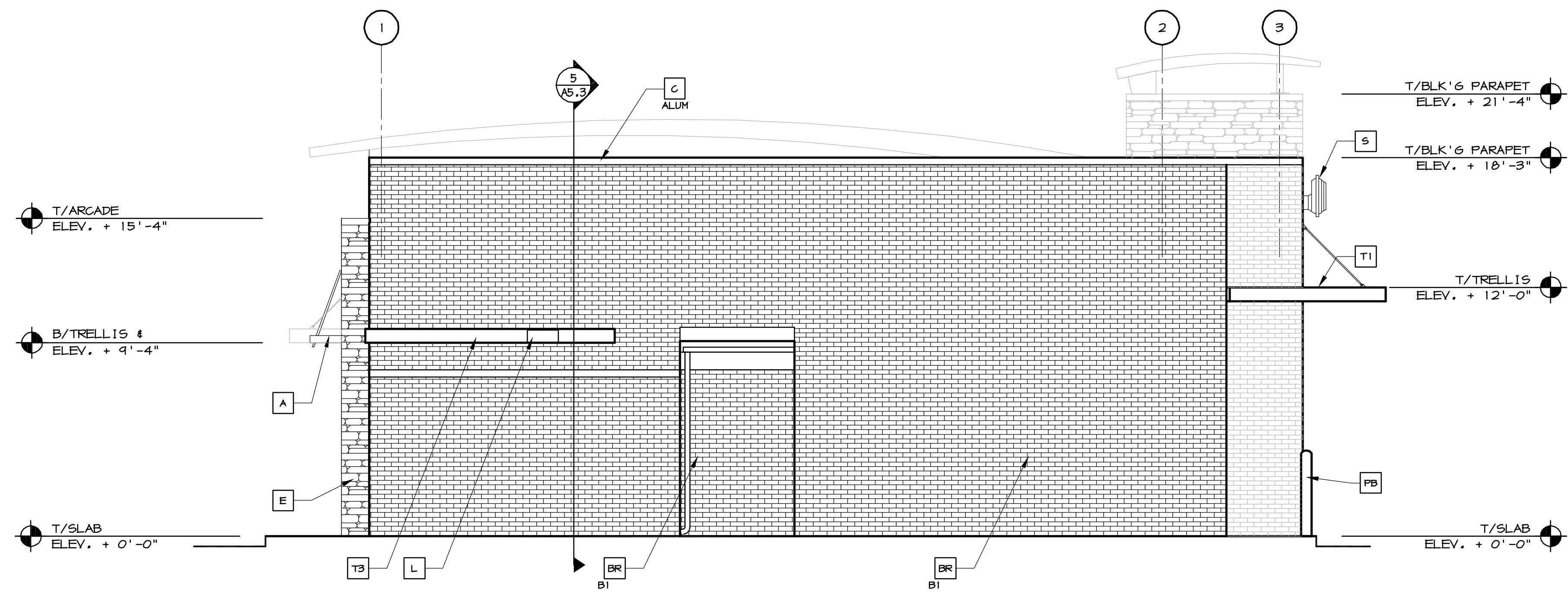
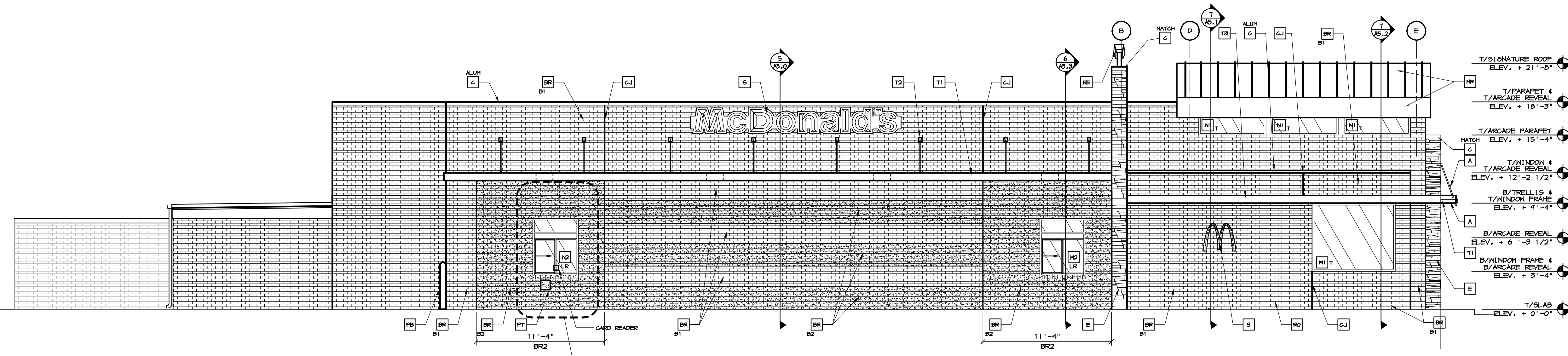
*Public Hearing Required (Submission Deadline 3 Weeks in Advance of Meeting Date)
Where fees are required (as noted above) they apply with the first submittal for either initial or final approval of a project.



C:\DOCUMENTS AND SETTINGS\K65\WORK\2005\FR00RD07\FE\4587\4587_A2-0_A2-1.DWG 11-06-2005 06:48

- T/BLOCKING PARAPET
ELEV. + 18'-3"
- T/BRICK REVEAL
ELEV. + 15'-4"
- T/TRELLIS & B/BRICK REVEAL
ELEV. + 12'-0"
- T/BRICK REVEAL
ELEV. + 9'-4"
- T/WINDOW
ELEV. + 8'-0"
- B/BRICK REVEAL
ELEV. + 6'-2 3/4"
- B/BRICK REVEAL
ELEV. + 3'-4"
- T/SILL
ELEV. + 3'-0"
- T/SLAB
ELEV. + 0'-0"

1 DRIVE THRU ELEVATION
 A2.1 3/16" = 1'-0"
 (SEE ELEVATION 2/A2.0 FOR CONTINUATION OF ELEVATION)



3 REAR ELEVATION
 A2.1 1/4" = 1'-0"

KEY NOTES:

- A METAL AWNING - UNDER SEPARATE PERMIT. COLOR TO BE ALTERNATING STRIPES TO MATCH PANTONE 123C AND 104C
- BR FACEBRICK
- C1 METAL COPING - COLOR = ALUMINUM
- C2 METAL COPING - COLOR TO MATCH SURROUNDING MATERIAL
- CJ CONTROL JOINT. SEE DETAIL T/A4.1
- D HOLLOW METAL DOOR - PAINT TO MATCH COLOR OF SURROUNDING MATERIAL.
- E CULTURED STONE
- PB CO2 FILL BOX (EQPM SCHEDULE ITEM 44.00)
- PB'01 OPTIONAL BULK OIL FILL BOX (EQPM SCHEDULE ITEM 100.18) - CONFIRM USE WITH MCD PROJECT MANAGER
- L LIGHT FIXTURE (WALL SCANCE) - SEE ELECTRICAL
- ML METAL LETTERING - BY OTHERS
- MR METAL ROOF - STANDING SEAM W/ALUMINUM FINISH FASCIA TRIM. COLOR TO BE "YELLOW" - PANTONE COLOR #10RU*
- PB PIPE BOLLARD - PAINTED YELLOW
- PT PASS-THRU COIN COLLECTOR - OPTIONAL (R#44C)
- RE ROOF GAP ELEMENT BY OTHERS
- R0 ROOF DRAIN OVERFLOW PIPE PAINT TO MATCH SURROUNDING MATERIAL
- S McDONALD'S SIGNAGE BY OTHERS - UNDER SEPARATE PERMIT. SEE SIGNAGE SUPPORT NOTE ON THIS SHEET.
- T1 ALUMINUM TRELLIS
- T2 TRELLIS TIE-BACK
- T3 2" x 8" WALL FASCIA - REFER TO SIM. DETAIL 3 ON SHEET A5.1

- N1 EXTERIOR WINDOW ASSEMBLY - SEE ASSEMBLY NOTES ON SHEET A5.0
- T = TEMPERED GLASS
- DRIVE-THRU WINDOW BY READY ACCESS - CONFIRM MODEL, OPTIONS, AND SIZE WITH MCD PROJECT MANAGER
- N2 TRANSOM (SHOWN): AIR CURTAIN; FLYPAN/TRANSOM # 432 XX 50 IN MAX SERVICE OPENING (WHERE REGD BY CODE)
- SLIDE DIRECTION: RL = RIGHT TO LEFT, LR = LEFT TO RIGHT

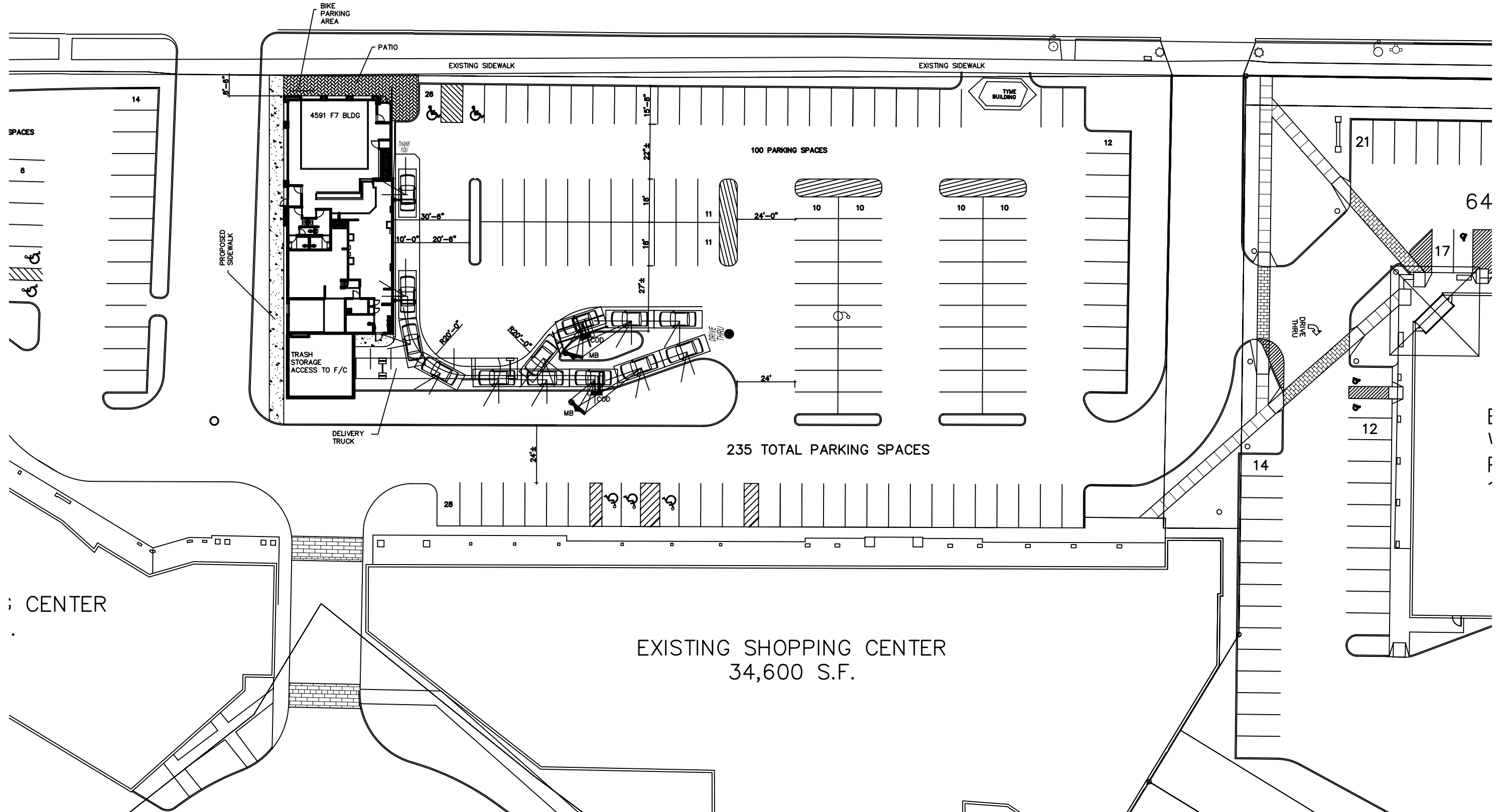
STRUCTURAL NOTE:
 UNIBODY FASCIA SIGN WALL SUPPORTS TO BE VERIFIED WITH McDONALD'S AREA CONSTRUCTION MANAGER AND COORDINATED WITH SIGN MANUFACTURER.

SHEET NO.	TITLE	DRAWN BY	DATE	2007 STANDARD BUILDING	DESCRIPTION	BY
				4587-WOOD/WOOD		
				APRIL 2007		
				APRIL 2007		
STATE CODE	115.	PREPARED FOR:	McDonald's USA, LLC	PREPARED BY:		
DATE ISSUED	APRIL 2007	REVIEWED BY	USED TEAM	DATE ISSUED	APRIL 2007	
REAR BEARING WALL'S N/4" BRICK EXTERIOR FINISH	WOOD ROOF TRUSS FRAMING	EXTERIOR FINISH ARCADE/ENTRY				
SITE ADDRESS	8061 East Washington Avenue - Madison, WI					
SCALE	048-0026					

EAST WASHINGTON AVENUE

51,950 cpd

U.S.H. "151"



SPACES

14

6

BIKE PARKING AREA

PATIO

EXISTING SIDEWALK

EXISTING SIDEWALK

4591 F7 BLDG

TIME BUILDING

100 PARKING SPACES

12

21

64

PROPOSED SIDEWALK

TRASH STORAGE ACCESS TO F/C

DELIVERY TRUCK

235 TOTAL PARKING SPACES

DRIVE THRU

12

14

; CENTER

EXISTING SHOPPING CENTER
34,600 S.F.